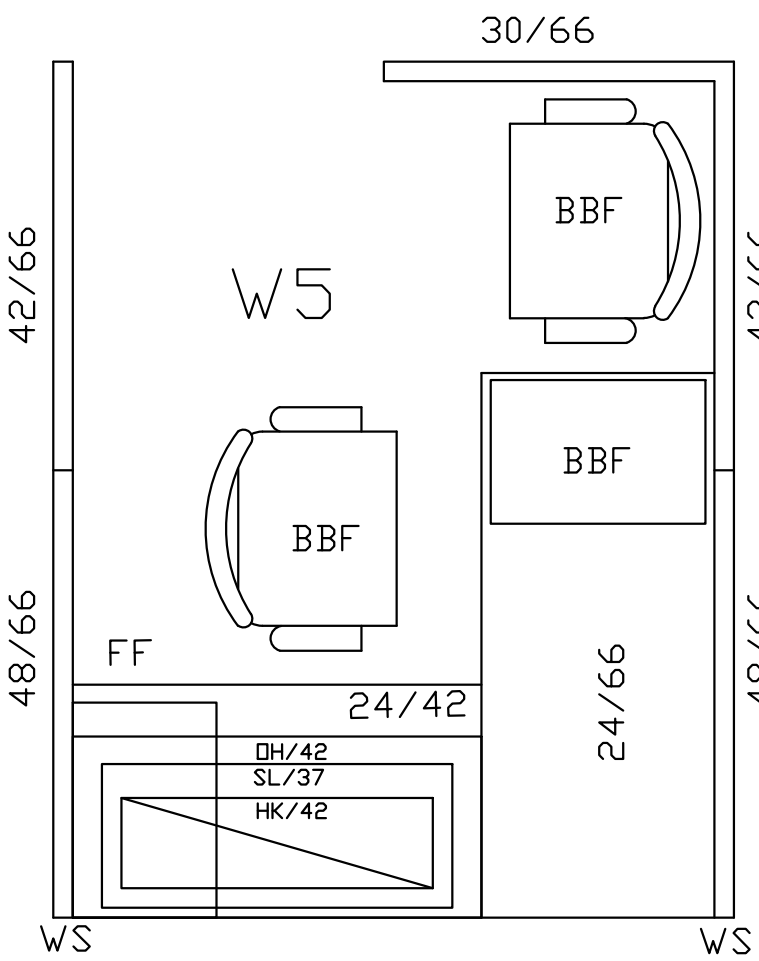
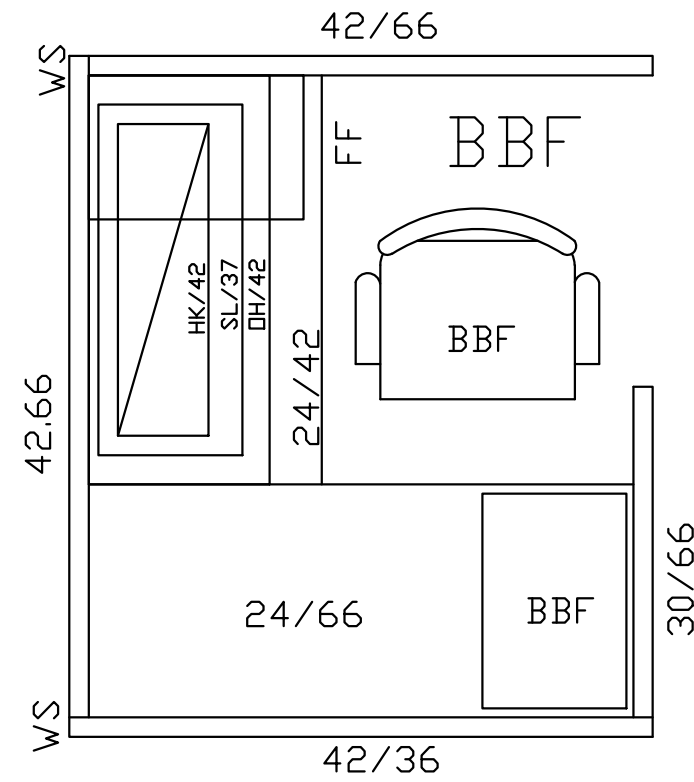


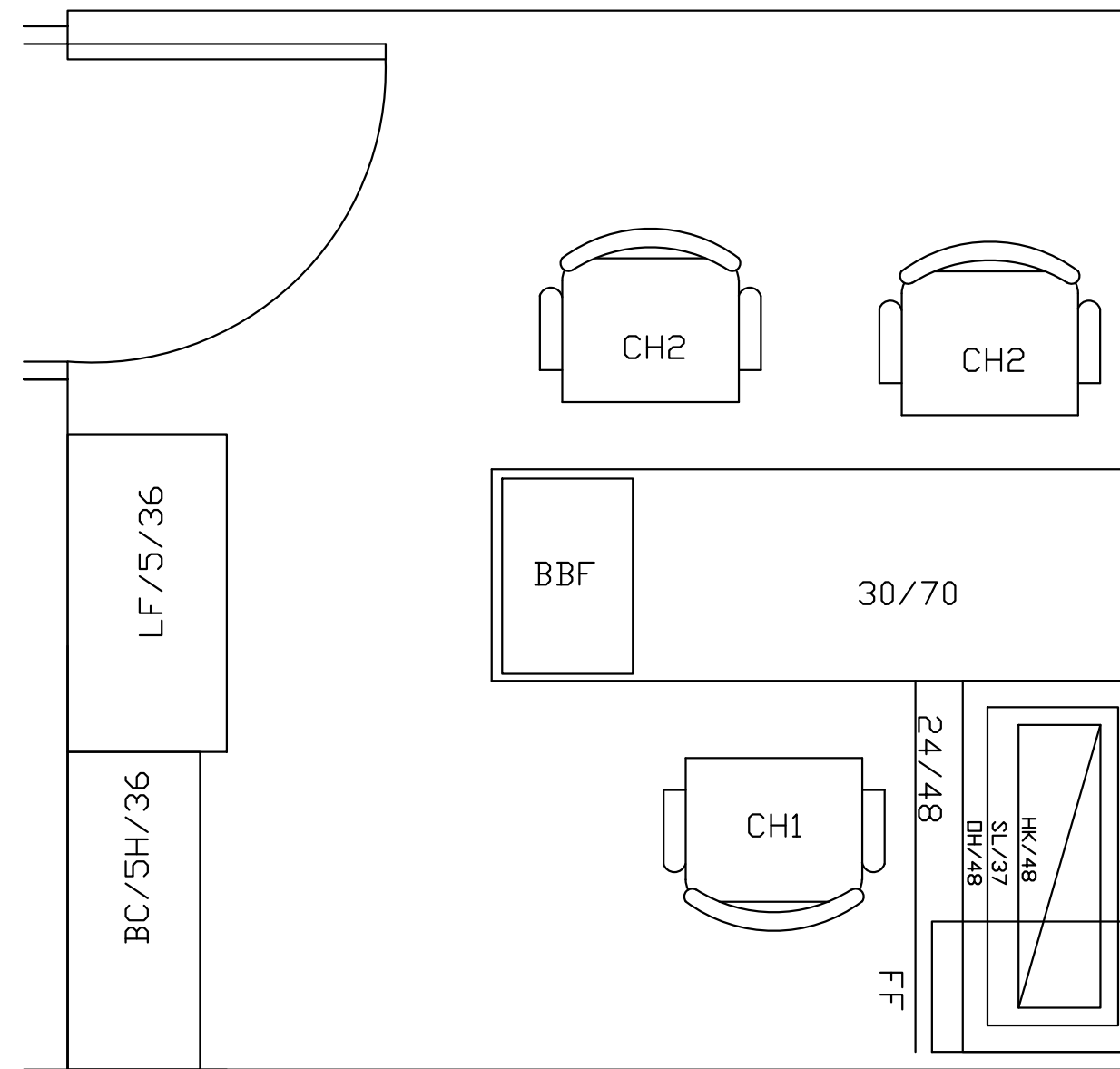
**1 FLOOR PLAN - BUILDING 16 FURNISHINGS**  
1/8"=1'-0"



**1 FLOOR PLAN - WORKSTATION TYPE B (TYP)**  
1/2"=1'-0"



**2 FLOOR PLAN - WORKSTATION TYPE A (TYP)**  
1/2"=1'-0"



**3 FLOOR PLAN - OFFICE FURNISHINGS (TYP)**  
1/2"=1'-0"

## FURNISHINGS SCHEDULE

ROOM NO..	FURNISHING ID	FURNISHING TYPE		UTILITY SERVICE			NOTES
		TYPE	REFERENCE DETAIL	POWER	COMM.	POWER LOCATIONS DRAWING REF.	
16-10	OFFICE 1A	C		2X 20A	2 VOICE 4 DATA	E-100, E-102	C-100, C-101
16-11	OFFICE 1B	C		2X 20A	2 VOICE 4 DATA	E-100, E-102	C-100, C-101
16-12	OFFICE 1C	C		2X 20A	2 VOICE 4 DATA	E-100, E-102	C-100, C-101
16-02	MANAGER OFFICE	C	---	---	---	E-100, E-102	C-100, C-101
16-03	CONFERENCE ROOM	---	---	16X 20A DUPLEX RECP	16 DATA 16 VOICE	E-100, E-102	C-100, C-101
16-11	ROOM 2C	---	---	---	---	---	---
16-10	EXAM 2A	---	---	---	---	---	---
16-06	EXAM 2B	---	---	---	---	---	---
16-06	W1	A		2X 20A	1 VOICE 2 DATA	E-100, E-102	C-100, C-101
16-06	W2	A		2X 20A	1 VOICE 2 DATA	E-100, E-102	C-100, C-101
16-06	W3	A		2X 20A	1 VOICE 2 DATA	E-100, E-102	C-100, C-101
16-06	W4	A		2X 20A	1 VOICE 2 DATA	E-100, E-102	C-100, C-101
16-06	W5	A		2X 20A	1 VOICE 2 DATA	E-100, E-102	C-100, C-101
16-06	W6	A		2X 20A	1 VOICE 2 DATA	E-100, E-102	C-100, C-101
16-06	W7	A		2X 20A	1 VOICE 2 DATA	E-100, E-102	C-100, C-101
16-06	W8	A		2X 20A	1 VOICE 2 DATA	E-100, E-102	C-100, C-101
16-06	W9	A		2X 20A	1 VOICE 2 DATA	E-100, E-102	C-100, C-101
16-06	W10	A		2X 20A	1 VOICE 2 DATA	E-100, E-102	C-100, C-101
16-06	W11	A		2X 20A	1 VOICE 2 DATA	E-100, E-102	C-100, C-101
16-06	W12	A		2X 20A	1 VOICE 2 DATA	E-100, E-102	C-100, C-101
16-06	W13	A		2X 20A	1 VOICE 2 DATA	E-100, E-102	C-100, C-101
16-06	W14	A		2X 20A	1 VOICE 2 DATA	E-100, E-102	C-100, C-101
16-06	W15	A		2X 20A	1 VOICE 2 DATA	E-100, E-102	C-100, C-101
16-06	W16	A		2X 20A	1 VOICE 2 DATA	E-100, E-102	C-100, C-101
16-06	W17	A		2X 20A	1 VOICE 2 DATA	E-100, E-102	C-100, C-101
16-06	W18	B		2X 20A	1 VOICE 2 DATA	E-100, E-102	C-100, C-101
16-06	W19	B		2X 20A	1 VOICE 2 DATA	E-100, E-102	C-100, C-101
16-06	W20	B		2X 20A	1 VOICE 2 DATA	E-100, E-102	C-100, C-101
16-06	W21	B		2X 20A	1 VOICE 2 DATA	E-100, E-102	C-100, C-101
16-06	W22	B		2X 20A	1 VOICE 2 DATA	E-100, E-102	C-100, C-101

### GENERAL NOTES:

- ALL FURNISHINGS FOR THE ADMINISTRATIVE OFFICE SUITE AND PRIVATE OFFICES, OTHER THAN THEN EDUCATION MANAGER OFFICE, ARE TO BE CONTRACTOR FURNISHED AND CONTRACTOR INSTALLED. ALL FURNISHINGS FOR THE EDUCATION OFFICE SUITE, EDUCATION PRIVATE OFFICE, AND THE EDUCATION MEDIA ROOM AND SIM-MAN TRAINING ROOM AND CONTROL CENTER ARE TO BE FURNISHED AND INSTALLED BY THE GOVERNMENT. CONTRACTOR SHALL BE RESPONSIBLE FOR PROVIDING AND COORDINATING ROUGH-IN UTILITY SERVICES FOR ALL GOVERNMENT PROVIDED EQUIPMENT AND FURNISHINGS.
- CONTRACTOR TO PROVIDE POWER AND DATA CONNECTIVITY TO BOTH VA PROVIDED AND CONTRACTOR PROVIDED OFFICE FURNISHINGS IN ACCORDANCE WITH THE FURNISHING MANUFACTURER'S INSTRUCTIONS.
- PROVIDE FIRESTOPPING FOR ALL FLOOR & WALL PENETRATIONS PER 7/A-102
- INFILL SLAB OPENINGS PER 5/A-102.
- CONTRACTOR IS RESPONSIBLE FOR FINAL RELOCATION OF FURNISHINGS BEFORE BUILDING COMMISSIONING.
- REFER TO ELECTRICAL AND COMMUNICATIONS DRAWINGS FOR INFORMATION REGARDING POWER AND DATA UTILIZATION AND CONFIGURATIONS FOR NEW FURNISHINGS. COORDINATE UTILITY SERVICES IN DRAWINGS WITH FURNITURE MANUFACTURER'S UTILITY INSTALLATION INSTRUCTIONS TO ENSURE PROPER INSTALLATION.
- REFER TO SPECIFICATION SECTION 09 91 32 FOR SALIENT CHARACTERISTICS OF EACH FURNISHING ITEM. ONLY SALIENT CHARACTERISTICS ARE PROVIDED WHICH MUST BE PROVIDED.

### FURNISHING ITEM SPECIFICATIONS

- Office 1 – Workstations, Seating and Files.
- 5 each TAG: LF/5/36 FILE–LATERAL, 18X36X65–1/2  
1 LIFTUP DOOR/SHELF, 4 DRAWER,LOCK,
- 3 each TAG: BPI BASE POWER IN–3 CIRCUIT  
WIRING OPTIONS, SHRD PWY STD:3 CIRCUIT SHARED  
NEUTRAL
- 22 each TAG: 24/66 DESK–SINGLE PEDESTAL  
FULL–HEIGHT MODESTY PANEL,  
BBF PED BOX/BOX/FILE
- 22 each TAG: 24X48 RETURN W/PEDESTAL  
FILE/FILE PEDESTAL
- 10 each WALL START CONNECTOR PANEL,
- 8 each TAG 24/66P PANEL– 66X24, POWERED  
TACKABLE, 3–CIRCUIT WITH SHARED NEUTRAL  
FACTORY INSTALLED POWERWAY
- 17 each TAG 24/66 PANEL–TACKABLE, 66X24,
- 22 each TAG 30–66 PANEL–TACKABLE, 66X30,
- 8 each TAG 42/66 PANEL–TACKABLE, 66X42
- 23 each TAG 42/66P PANEL– 66X42, POWERED  
TACKABLE, 3–CIRCUIT WITH SHARED NEUTRAL  
FACTORY INSTALLED POWERWAY
- 6 each TAG 48/66 PANEL–TACKABLE, 66X48
- 27 eachTRIM–VERTICAL, CORNER, 66",
- 24 each TRIM–VERTICAL, END OF RUN, 66"
- 22 each TAG: K/42 HUTCH 42W
- 22 each TAG: OH/42 BIN–OVER THE CASE, 42W
- 22 each TAG SL/37 LIGHT–SHELF, ELECTRONIC BALLAST,  
25 WATT, LAMP, 9' CORD, 37W
- PROVIDE 20 each CIRCUIT 1 RECEPTACLE, 8 WIRE SYSTEM–  
TAG:1 – 6 EACH 3 CIRCUIT RECEPTACLES, LINE 1  
TAG 2 – 6 EACH 3 CIRCUIT LINE 2
- 5 each TAG: CH2 SIDE CHAIR WITH ARMS
- 22 each TAG: CH1 TASK CHAIR WITH ARMS

### Office 1B, 1C and 1D Office Furniture

- 3 each TAG: 30/72 DESK–SINGLE  
PEDESTAL, FULL–HEIGHT MODESTY  
PANEL, BBF PED BOX/BOX/FILE  
PEDESTAL
- 3 each TAG: 24/48 RETURN–PEDESTAL,  
24X48  
PEDESTAL : FILE/FILE PEDESTAL
- 2 each TAG: K/48 HUTCH KIT–48W USED  
WITH
- 3 each TAG: OH/48 BIN–OVER THE CASE,  
48W TO PROVIDE A DESK MOUNTED  
HUTCH UNIT
- 3 each TAG SL/37 LIGHT–SHELF,  
ELECTRONIC BALLAST, 25 WATT, LAMP, 9'  
CORD, 37W
- 3 each TAG: LF/5/36 FILE–LATERAL, 1  
LIFTUP DOOR/SHELF, 4 DRAWER,LOCK,  
18X36X65–1/2
- 3 each TAG: BC/5H/36 BOOKCASE, 4  
ADJUSTABLE SHELVES, 15X36X65–1/2,
- 6 each TAG CH2 – SIDE CHAIR: LEG BASE,  
ARM,
- 3 each TAG: CH 1 TASK CHAIR

Revisions	
Revisions:	Date

### CONSULTANTS:

### ARCHITECT/ENGINEERS:

Drawing Title  
FURNISHINGS PLAN & ELEVATIONS

Approved: Project Director

Project Title  
RENOVATE FOR EDUCATION  
SERVICE AND ADMINISTRATIVE  
SPACE.

Location  
SYRACUSE VAMC

Date  
7/31/2012

Checked  
CF

Drawn  
AZH

Project Number  
528A7-12-732

Building Number  
16

Drawing Number

A-104  
9 OF 23

