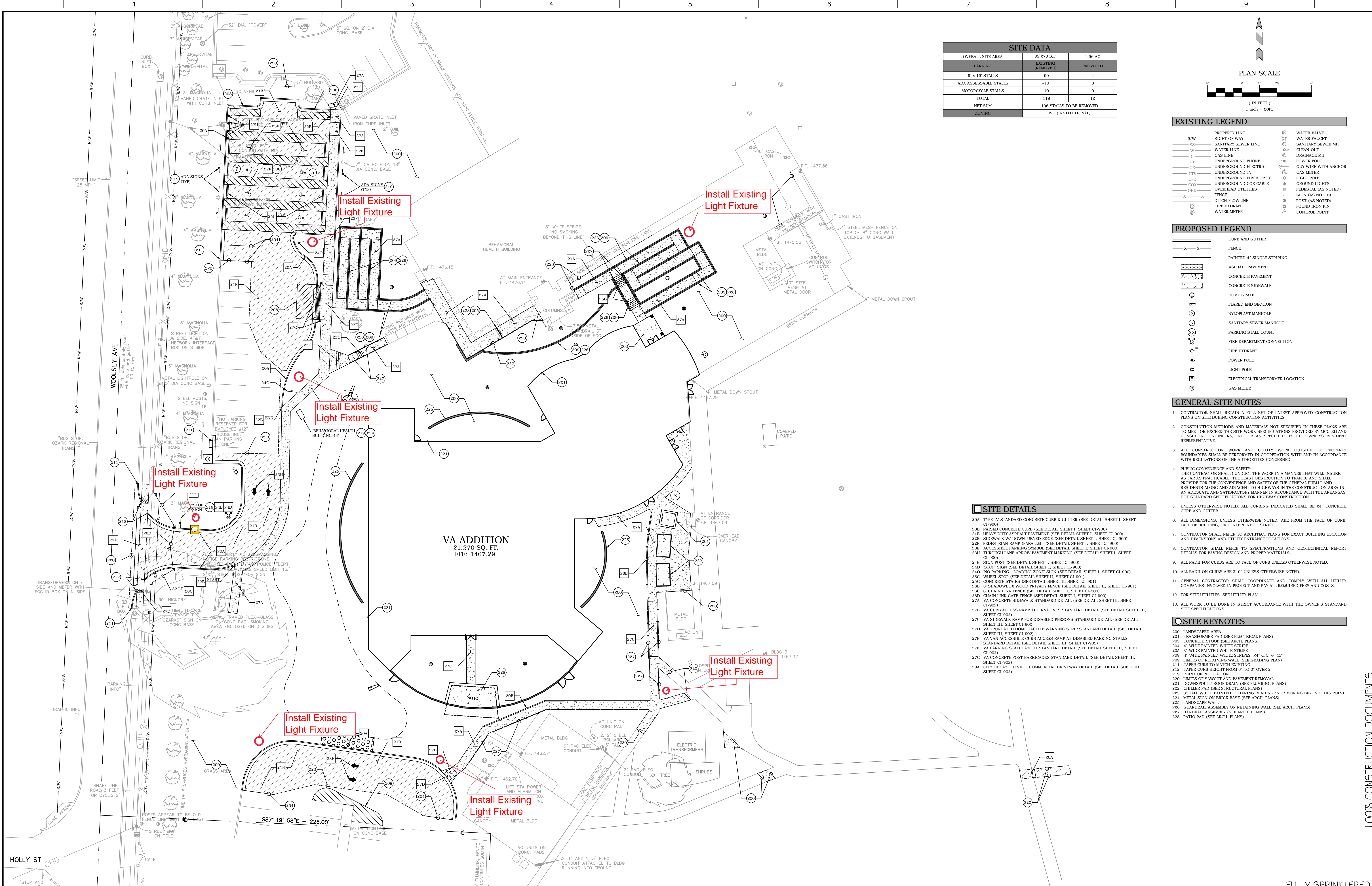
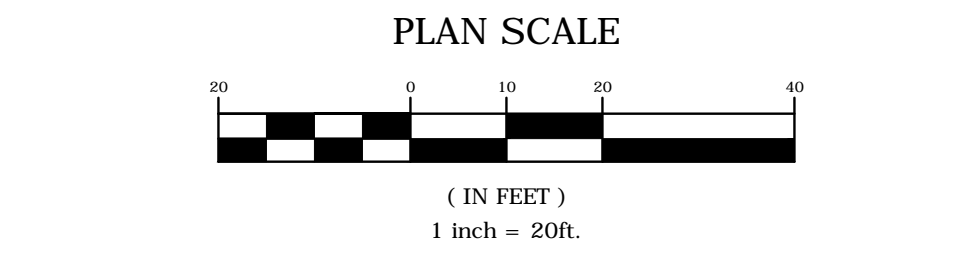


three inches = one foot
one and one half inches = one foot
one inch = one foot
three quarters inch = one foot
one half inch = one foot
three eighths inch = one foot
one quarter inch = one foot
one eighth inch = one foot



SITE DATA		
OVERALL SITE AREA	85,270 S.F.	1.96 AC
PARKING	EXISTING (REMOVED)	PROVIDED
9' x 19' STALLS	-90	4
ADA ACCESSIBLE STALLS	-18	8
MOTORCYCLE STALLS	-10	0
TOTAL	-118	12
NET SUM	106 STALLS TO BE REMOVED	
ZONING	P-1 (INSTITUTIONAL)	



EXISTING LEGEND	
---	PROPERTY LINE
---	RIGHT OF WAY
---	SANITARY SEWER LINE
---	WATER LINE
---	GAS LINE
---	UNDERGROUND PHONE
---	UNDERGROUND ELECTRIC
---	UNDERGROUND TV
---	UNDERGROUND FIBER OPTIC
---	UNDERGROUND COX CABLE
---	OVERHEAD UTILITIES
---	FENCE
---	DITCH FLOWLINE
---	FIRE HYDRANT
---	WATER METER
---	WATER VALVE
---	WATER FAUCET
---	SANITARY SEWER MH
---	CLEAN-OUT
---	DRAINAGE MH
---	POWER POLE
---	GUY WIRE WITH ANCHOR
---	GAS METER
---	LIGHT POLE
---	GROUND LIGHTS
---	PEDESTAL (AS NOTED)
---	SIGN (AS NOTED)
---	POST (AS NOTED)
---	FOUND IRON PIN
---	CONTROL POINT

PROPOSED LEGEND	
---	CURB AND GUTTER
---	FENCE
---	PAINTED 4" SINGLE STRIPING
---	ASPHALT PAVEMENT
---	CONCRETE PAVEMENT
---	CONCRETE SIDEWALK
---	DOME GRATE
---	FLARED END SECTION
---	NYLOPLAST MANHOLE
---	SANITARY SEWER MANHOLE
---	PARKING STALL COUNT
---	FIRE DEPARTMENT CONNECTION
---	FIRE HYDRANT
---	POWER POLE
---	LIGHT POLE
---	ELECTRICAL TRANSFORMER LOCATION
---	GAS METER

- GENERAL SITE NOTES**
- CONTRACTOR SHALL RETAIN A FULL SET OF LATEST APPROVED CONSTRUCTION PLANS ON SITE DURING CONSTRUCTION ACTIVITIES.
 - CONSTRUCTION METHODS AND MATERIALS NOT SPECIFIED IN THESE PLANS ARE TO MEET OR EXCEED THE SITE WORK SPECIFICATIONS PROVIDED BY MCLELLAND CONSULTING ENGINEERS, INC. OR AS SPECIFIED BY THE OWNER'S RESIDENT REPRESENTATIVE.
 - ALL CONSTRUCTION WORK AND UTILITY WORK OUTSIDE OF PROPERTY BOUNDARIES SHALL BE PERFORMED IN COOPERATION WITH AND IN ACCORDANCE WITH REGULATIONS OF THE AUTHORITIES CONCERNED.
 - PUBLIC CONVENIENCE AND SAFETY: THE CONTRACTOR SHALL CONDUCT THE WORK IN A MANNER THAT WILL INSURE, AS FAR AS PRACTICABLE, THE LEAST OBSTRUCTION TO TRAFFIC AND SHALL PROVIDE FOR THE CONVENIENCE AND SAFETY OF THE GENERAL PUBLIC AND RESIDENTS ALONG AND ADJACENT TO HIGHWAYS IN THE CONSTRUCTION AREA IN AN ADEQUATE AND SATISFACTORY MANNER IN ACCORDANCE WITH THE ARKANSAS DOT STANDARD SPECIFICATIONS FOR HIGHWAY CONSTRUCTION.
 - UNLESS OTHERWISE NOTED, ALL CURBING INDICATED SHALL BE 24" CONCRETE CURB AND GUTTER.
 - ALL DIMENSIONS, UNLESS OTHERWISE NOTED, ARE FROM THE FACE OF CURB, FACE OF BUILDING, OR CENTERLINE OF STRIPE.
 - CONTRACTOR SHALL REFER TO ARCHITECT PLANS FOR EXACT BUILDING LOCATION AND DIMENSIONS AND UTILITY ENTRANCE LOCATIONS.
 - CONTRACTOR SHALL REFER TO SPECIFICATIONS AND GEOTECHNICAL REPORT DETAILS FOR PAVING DESIGN AND PROPER MATERIALS.
 - ALL RADI FOR CURBS ARE TO FACE OF CURB UNLESS OTHERWISE NOTED.
 - ALL RADI FOR CURBS ARE 3'-0" UNLESS OTHERWISE NOTED.
 - GENERAL CONTRACTOR SHALL COORDINATE AND COMPLY WITH ALL UTILITY COMPANIES INVOLVED IN PROJECT AND PAY ALL REQUIRED FEES AND COSTS.
 - FOR SITE UTILITIES, SEE UTILITY PLAN.
 - ALL WORK TO BE DONE IN STRICT ACCORDANCE WITH THE OWNER'S STANDARD SITE SPECIFICATIONS.

- SITE KEYNOTES**
- LANDSCAPED AREA (SEE ELECTRICAL PLANS)
 - CONCRETE STOP (SEE ARCH. PLANS)
 - 4" WIDE PAINTED WHITE STRIPE
 - 3" WIDE PAINTED WHITE STRIPE
 - 4" WIDE PAINTED WHITE STRIPES, 24" O.C. @ 45°
 - LIMITS OF RETAINING WALL (SEE GRADING PLAN)
 - TAPER CURB TO MATCH EXISTING
 - TAPER CURB HEIGHT FROM 6" TO 0" OVER 2'
 - POINT OF RELOCATION
 - LIMITS OF SAWCUT AND PAVEMENT REMOVAL
 - DOWNSPOUT / ROOF DRAIN (SEE PLUMBING PLANS)
 - CHILLER PAD (SEE STRUCTURAL PLANS)
 - 3" TALL WHITE PAINTED LETTERING READING "NO SMOKING BEYOND THIS POINT"
 - METAL SIGN ON BRICK BASE (SEE ARCH. PLANS)
 - LANDSCAPE WALL
 - GUARDRAIL ASSEMBLY ON RETAINING WALL (SEE ARCH. PLANS)
 - HANDRAIL ASSEMBLY (SEE ARCH. PLANS)
 - PATIO PAD (SEE ARCH. PLANS)

SITE DETAILS

- TYPE 'A' STANDARD CONCRETE CURB & GUTTER (SEE DETAIL SHEET I, SHEET C1-900)
- RAISED CONCRETE CURB (SEE DETAIL SHEET I, SHEET C1-900)
- HEAVY DUTY ASPHALT PAVEMENT (SEE DETAIL SHEET I, SHEET C1-900)
- SIDEWALK W/ DOWNTURNED EDGE (SEE DETAIL SHEET I, SHEET C1-900)
- PEDESTRIAN RAMP (PARALLEL) (SEE DETAIL SHEET I, SHEET C1-900)
- THROUGH LANE ARROW PAVEMENT MARKING (SEE DETAIL SHEET I, SHEET C1-900)
- SIGN POST (SEE DETAIL SHEET I, SHEET C1-900)
- *STOP SIGN (SEE DETAIL SHEET I, SHEET C1-900)
- *NO PARKING - LOADING ZONE SIGN (SEE DETAIL SHEET I, SHEET C1-900)
- WHEEL STOP (SEE DETAIL SHEET II, SHEET C1-901)
- CONCRETE STAIRS (SEE DETAIL SHEET II, SHEET C1-901)
- SHADOWBOX WOOD PRIVACY FENCE (SEE DETAIL SHEET II, SHEET C1-901)
- CHAIN LINK GATE FENCE (SEE DETAIL SHEET I, SHEET C1-900)
- VA CONCRETE SIDEWALK STANDARD DETAIL (SEE DETAIL SHEET III, SHEET C1-902)
- VA CURB ACCESS RAMP ALTERNATIVES STANDARD DETAIL (SEE DETAIL SHEET III, SHEET C1-902)
- VA SIDEWALK RAMP FOR DISABLED PERSONS STANDARD DETAIL (SEE DETAIL SHEET III, SHEET C1-902)
- VA TRUNCATED DOME TACTILE WARNING STRIP STANDARD DETAIL (SEE DETAIL SHEET III, SHEET C1-902)
- VA VAN ACCESSIBLE CURB ACCESS RAMP AT DISABLED PARKING STALLS STANDARD DETAIL (SEE DETAIL SHEET III, SHEET C1-902)
- VA PARKING STALL LAYOUT STANDARD DETAIL (SEE DETAIL SHEET III, SHEET C1-902)
- VA CONCRETE POST BARRICADES STANDARD DETAIL (SEE DETAIL SHEET III, SHEET C1-902)
- CITY OF FAYETTEVILLE COMMERCIAL DRIVEWAY DETAIL (SEE DETAIL SHEET III, SHEET C1-902)

Revisions	Date
100% CONSTRUCTION DOCUMENT UPDATE	4/30/18
Updated with relocated existing light fixtures	10/18/18

CONSULTANTS:

CONSULTANT ARCHITECT: JACOBS
CIVIL ENGINEER: MCLELLAND CONSULTING ENGINEERS
MEP + STRUCT: IMEG (FORMALLY KJWW)
COMMISSIONING: NV5 SEBESTA
ESTIMATOR: MIDDLETON CONSTRUCTION CONSULTANTS



ARCHITECT/ENGINEERS:

MICHAEL ROTH AND ASSOCIATES

Drawing Title SITE PLAN		Project Title DESIGN INPATIENT MENTAL HEALTH BUILDING 49		Project Number 564-610	
Medical Center Director:		Associate Director Patient Care Services:		Building Number N/A	
Associate Director:		Supervisory Industrial Hygienist:		Drawing Number C5-200	
Chief of Staff:		Chief of Engineering Services:		SHT 7 of 160	
Location 2575 KEYSTONE CROSSING FAYETTEVILLE, AR 72703		Date 04/16/18		Checked WFM	
Drawn JAD		Date 04/16/18		Checked WFM	



VETERANS HEALTH CARE SYSTEM OF THE OZARKS