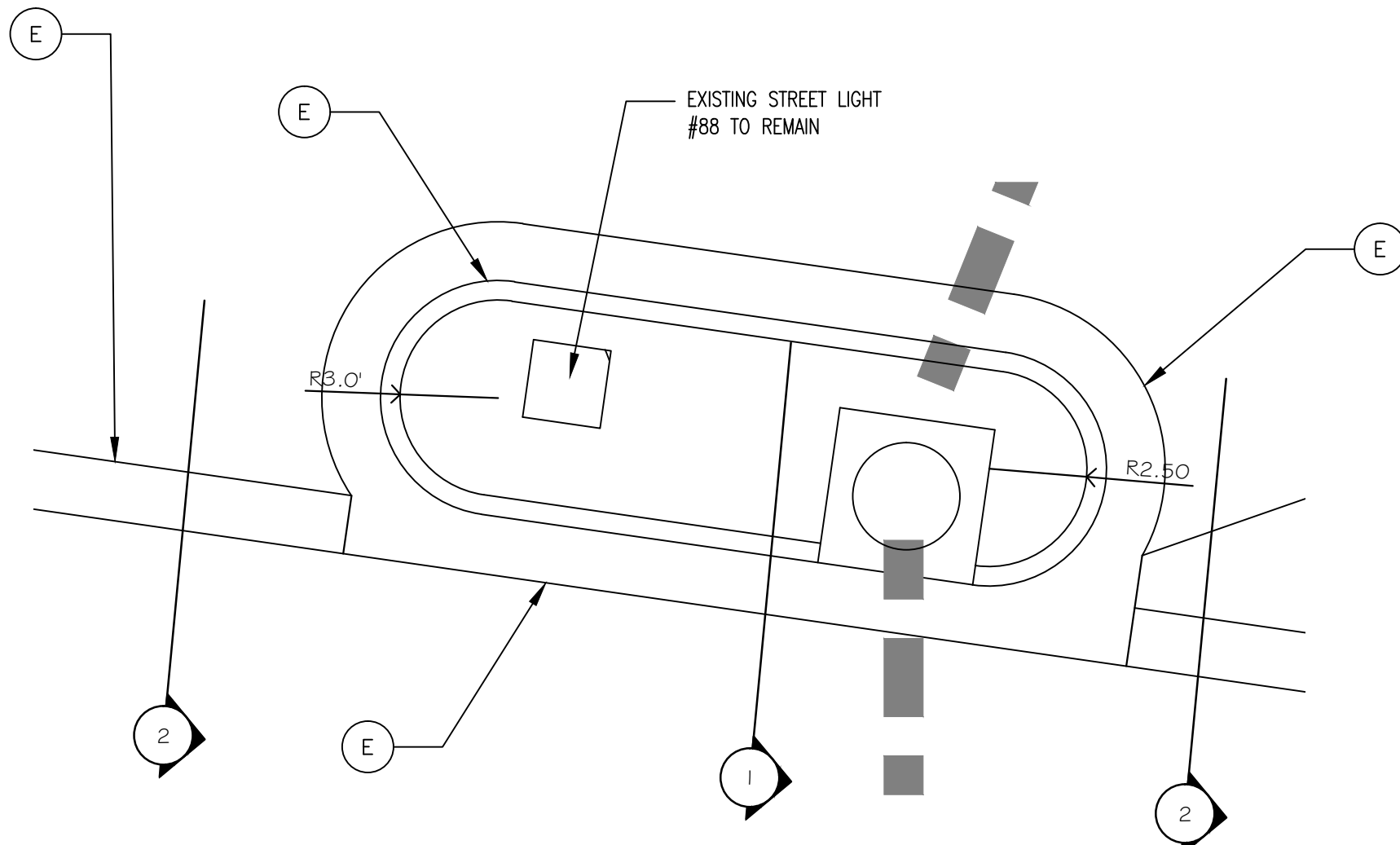
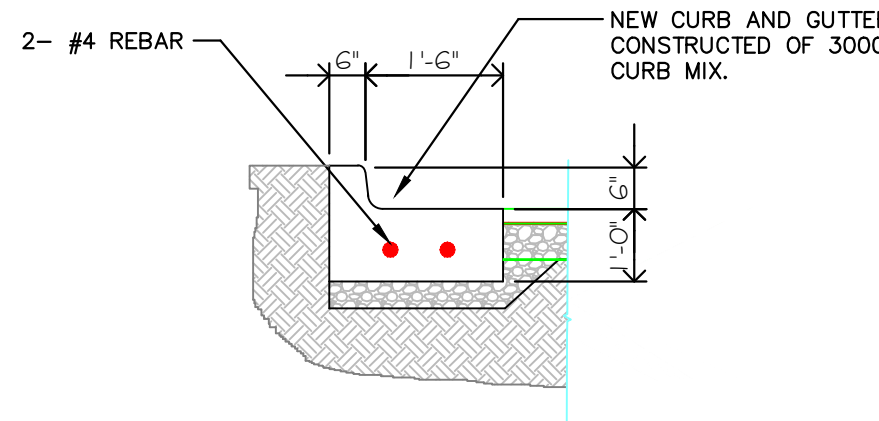
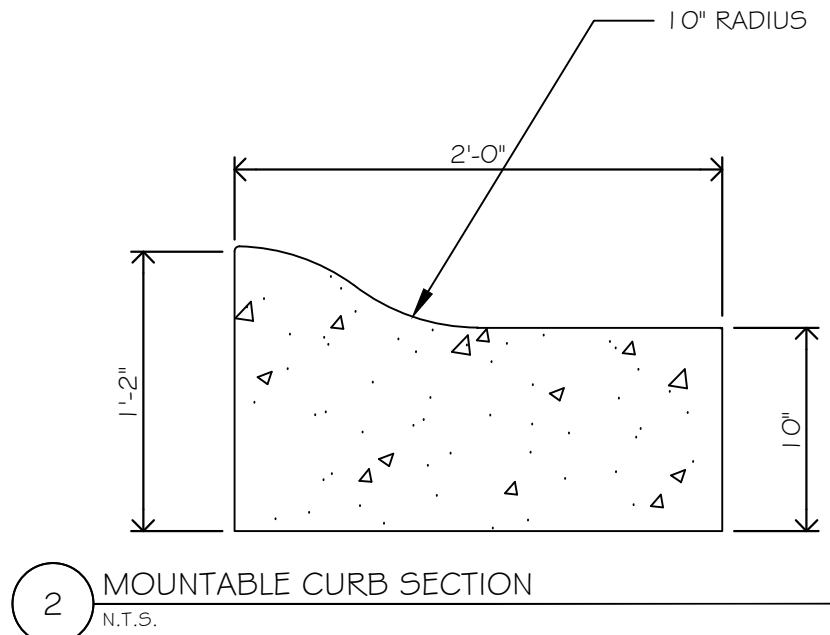


SITE LOCATION PLAN- TREE REMOVAL
17' = 40'



1 CURB SECTION
N.T.S.



SHOULDER, SIDES, DITCHES, SLOPES (MAX. 3:1)		
DATE	TYPE	PLANTING RATE
AUG 15 - NOV 1	TALL FESCUE	300WACKES(FESCUE)
NOV 1 - MAR 1	TALL FESCUE # ABRUZZI RYE	300WACKES(FESCUE) AND 25WACKES ABRUZZI RYE
MAR 1 - APR 15	TALL FESCUE	300WACKES
AUG 15 - JUNE 30	TALL FESCUE # ABRUZZI RYE	300WACKES (FESCUE) # 25WACKES (RYE)
JUL 1 - AUG 15	TALL FESCUE BROWN TOP MILLET OR SORGHUM-SUDAN HYBRIDS	(FESCUE) 25WACKES (BROWN TOP) 30WACKES (SUDAN)

THE VEGETATION RATES ARE THOSE WHICH WILL DO WELL UNDER LOCAL CONDITIONS; OTHER SEEDING RATES COMBINATIONS ARE POSSIBLE.

SOW SEED USING A SPREADER OR SEEDING MACHINE. DO NOT SEED WHEN WIND VELOCITY EXCEEDS 5 MPH. DISTRIBUTE EVENLY OVER ENTIRE AREA BY SOWING EQUAL QUANTITY IN 2 DIRECTIONS AT RIGHT ANGLES.

SOW NOT LESS THAN THE QUANTITY OF SEED SPECIFIED OR SCHEDULED

RAKE SEED LIGHTLY INTO TOP 1/2" OF SOIL, ROLL LIGHTLY AND WATER WITH A FINE SPRAY.

PROTECT SEEDED SLOPES OF GREATER THAN 3:1 AGAINST EROSION WITH EROSION NETTING OR OTHER METHODS ACCEPTABLE TO THE C.O.T.R.

PROTECT SEEDED AREA AGAINST EROSION BY SPREADING SPECIFIED LAWN MULCH AFTER COMPLETION OF SEEDING OPERATIONS. SPREAD UNIFORMLY TO FORM A CONTINUOUS BLANKET NOT LESS THAN 1/2" LOOSE MEASUREMENT OVER SEEDED AREAS.

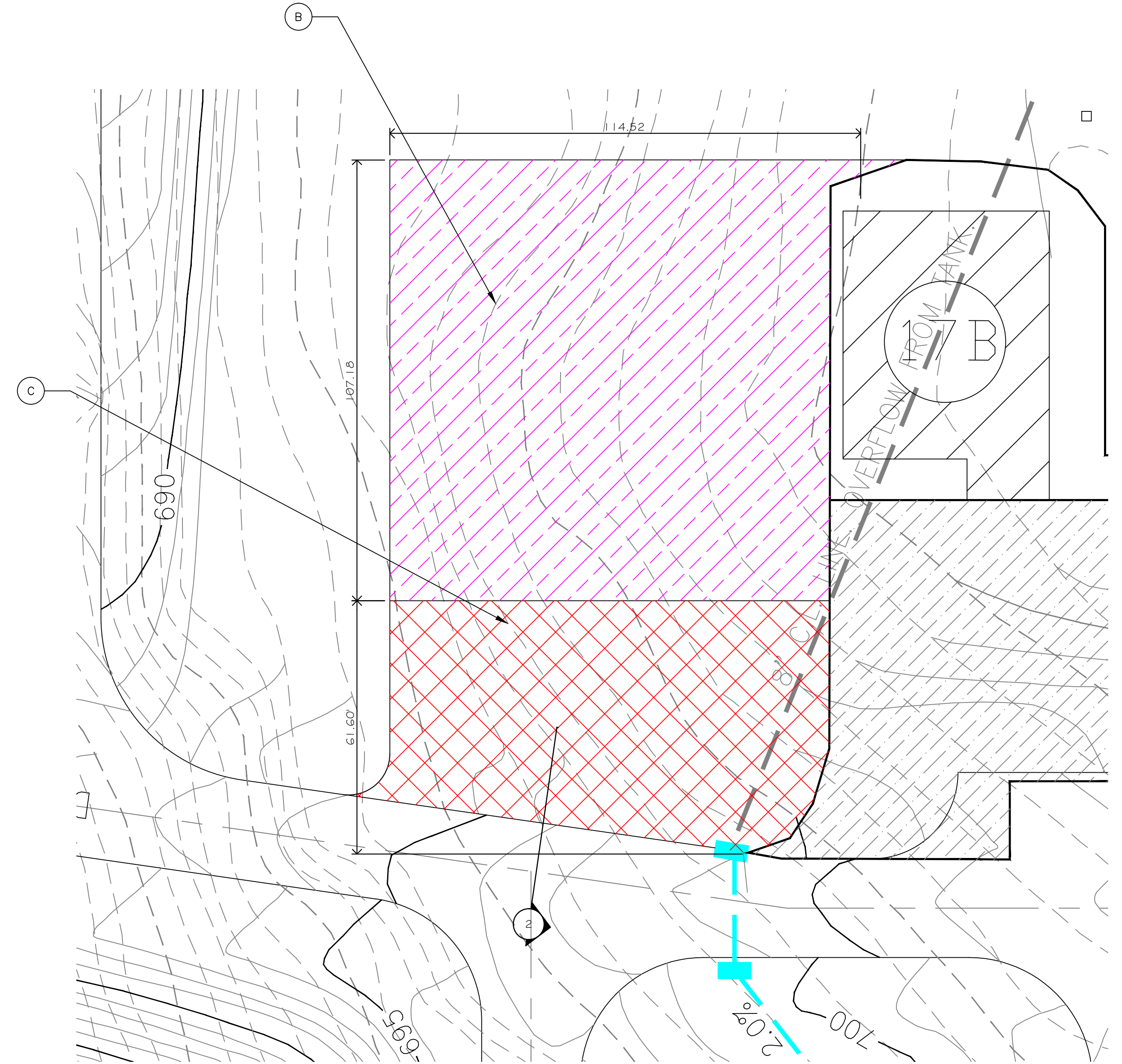
ANCHORS MULCH BY SPRAYING WITH ASPHALT EMULSION AT THE RATE OF 10-13 GALLONS PER 1000 S.F. TAKE PRECAUTIONS TO PREVENT DAMAGE OR STAINING OF CONSTRUCTION OR OTHER PLANTING ADJACENT TO MULCHED AREAS.

SEEDBED PREPARATION:

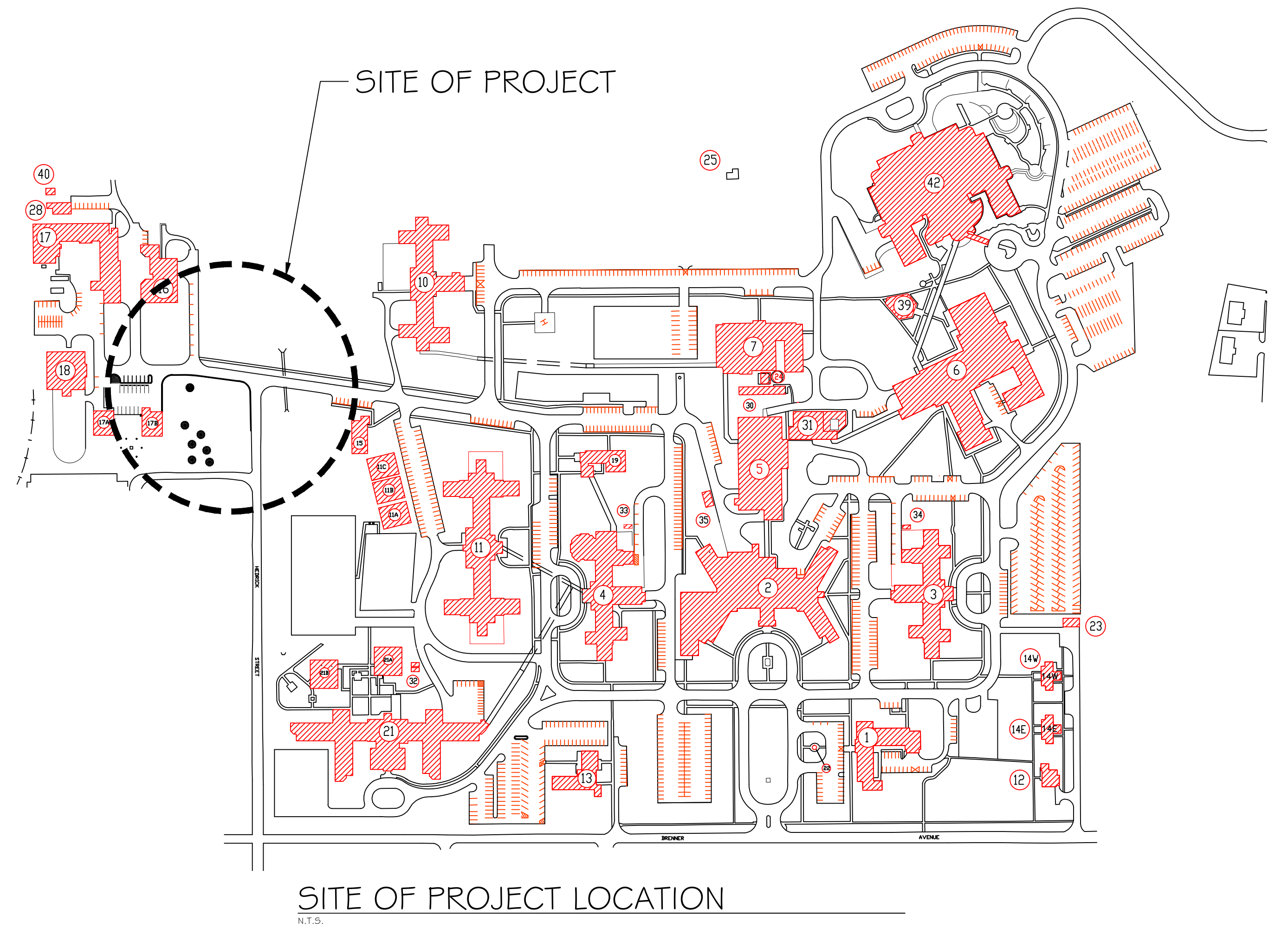
1. CHISEL COMPACTED AREA AND SPREAD TOPSOIL 3" DEEP OVER ADVERSE SOIL CONDITIONS, IF AVAILABLE.
2. RIP THE ENTIRE AREA TO 6" DEEP.
3. REMOVE ALL LOOSE ROCK, ROOTS, AND OTHER OBSTRUCTIONS LEAVING SURFACE REASONABLY SMOOTH AND UNIFORM.
4. APPLY AGRICULTURAL LIME, FERTILIZER, AND SUPERPHOSPHATE UNIFORMLY AND MIX WITH SOIL (SEE BELOW).
5. CONTINUOUS TILLAGE UNTIL A WELL PULVERIZED, FIRM REASONABLY UNIFORM SEEDBED IS PREPARED 4"-6" DEEP.
6. SEED ON A FRESHLY PREPARED SEEDBED AND COVER SEED LIGHTLY WITH SEEDING EQUIPMENT OR CULTIPACK AFTER SEEDING.
7. MULCH IMMEDIATELY AFTER SEEDING AND ANCHOR MULCH.
8. INSPECT ALL SEEDED AREAS AND MAKE NECESSARY REPAIR OR RE-SEEDING WITHIN THE PLANTING SEASON, IF POSSIBLE. IF STAND SHOULD BE OVER 60% DAMAGED, REESTABLISH FOLLOWING ORIGINAL LIME, FERTILIZER AND SEEDING RATES.

* APPLY: AGRICULTURAL LIMESTONE- 2 TONS/ ACRE
FERTILIZER- 1000 LBS / ACRE 10-10-10
SUPERPHOSPHATE- 500 LBS / ACRES 20%
MULCH- 2 TONS / ACRE SMALL GRAIN STRAW
ANCHOR- ASPHALT EMULSION- 10 GAL / 1000 S.F.

LANDSCAPING AND RESEEDING SPECS



SITE OF PROJECT EXCAVATION
17' = 40'



SITE OF PROJECT LOCATION
N.T.S.

SITE LOCATION PLAN- NEW CONCRETE
17' = 40'

SCOPE OF WORK

THE INTENT OF THIS PROJECT IS TO HAVE A PRE-ENGINEERED METAL BUILDING EQUAL TO THE EXISTING METAL BUILDING IN COLOR, CONSTRUCTION AND SIZE CONSTRUCTED. THE NEW BUILDING WILL BE SUBDIVIDED INTO TWO SEPARATE AREAS BY A NEW METAL STUD AND G.W.B. WALL. THE WALL WILL HAVE A 6' x 7' METAL FRAME AND METAL DOORS WITH COMPLETE WITH HARDWARE, INCLUDING MORTISE LOCKSET, HINGES WITH NON REMOVABLE HINGES, FLUSH BOLTS AT TOP AND BOTTOM OF ONE DOOR. THE NEW METAL BUILDING SHALL HAVE ELECTRICAL OUTLETS, HIGH BAY LIGHTS, EXHAUST FAN AT THE END OF THE NON AIR CONDITION AREA. THE SMALLER SIDE WILL HAVE AN HEAT PUMP INSTALLED AND THE WALLS WILL BE SPRAYED WITH CLOSED CELL SPRAY FOAM INSULATION. THIS INCLUDES THE NEW METAL STUD DIVIDING WALL, CEILING AND ALL WALLS IN THIS SECTION. THE PROJECT WILL ALSO CONSIST OF EXCAVATION FOR BUILDING AND THE INSTALLATION FOR CONCRETE WORK FOR CURB AND GUTTER, INSTALLING A SPRINKLER SYSTEM FOR THE WHOLE BUILDING, AND STRIPPING FOR PARKING.

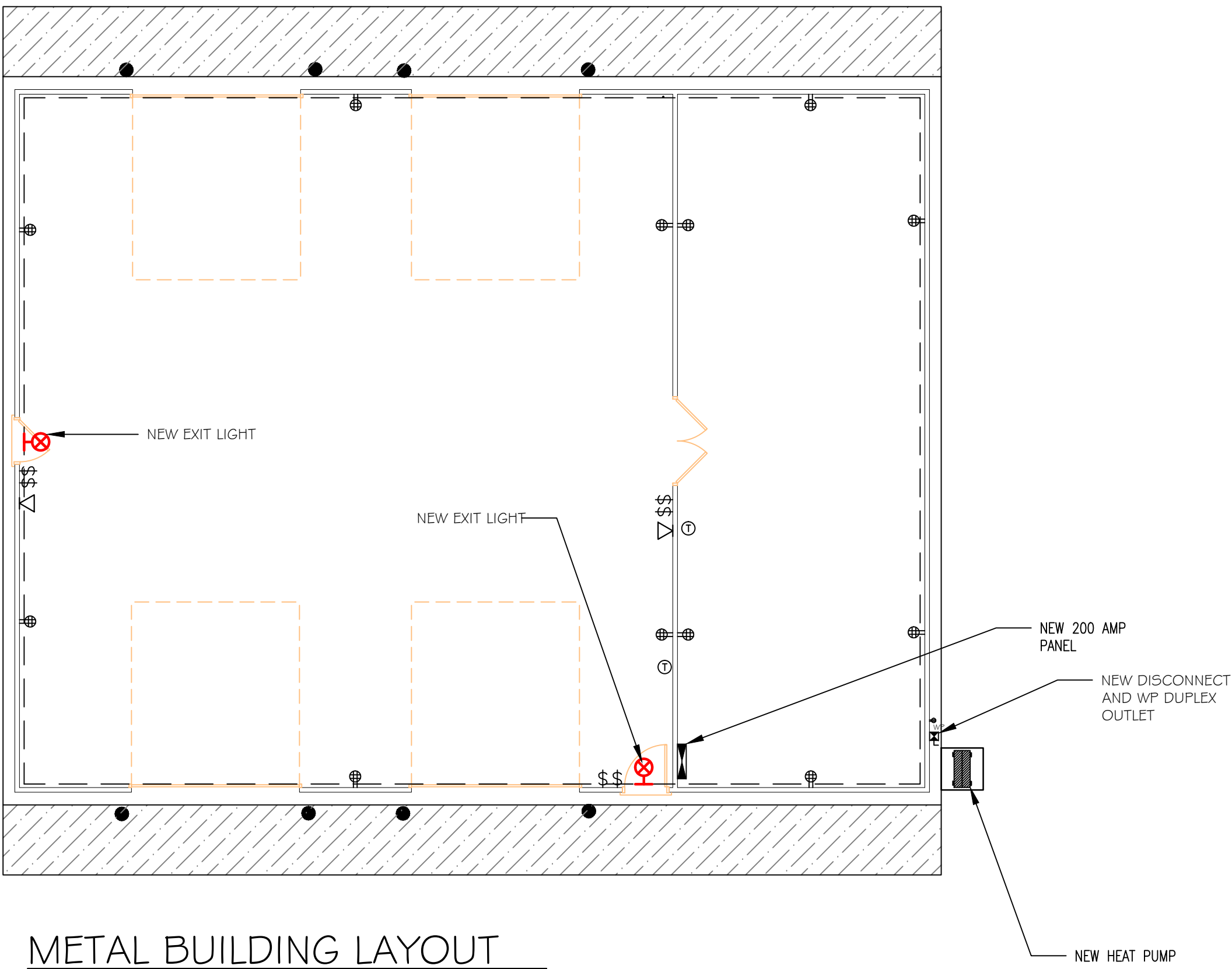
RECOMMEND APPROVAL			
REQUESTER	Date	CHIEF OF SERVICE	Date
ASSOC. DIR. PATIENT CARE SVC.	Date	ASSOC. DIR. for OPERATIONS	Date
APPROVAL BY:	Date	APPROVED: Chief of Facilities Management Svr.	Date
MEDICAL CENTER DIRECTOR			

Drawing Title	Project Title
DEMOLITION OF SITE WORK AND RENOVATION OF C & G PLANS NOTES AND DETAILS	CONSTRUCT NEW METAL BUILDING B17C
Approved: Safety Manager/M&O Supervisor	Building Number
	Checked
	Drawn GLM
	Location
	W.G.(Bill) Hefner Medical Center 1601 Brenner Ave. Salisbury NC 28144

Date	6-14-2012
Project No.	659-12-250
DRAWING NO.	IR
DWG. 1 OF 4	



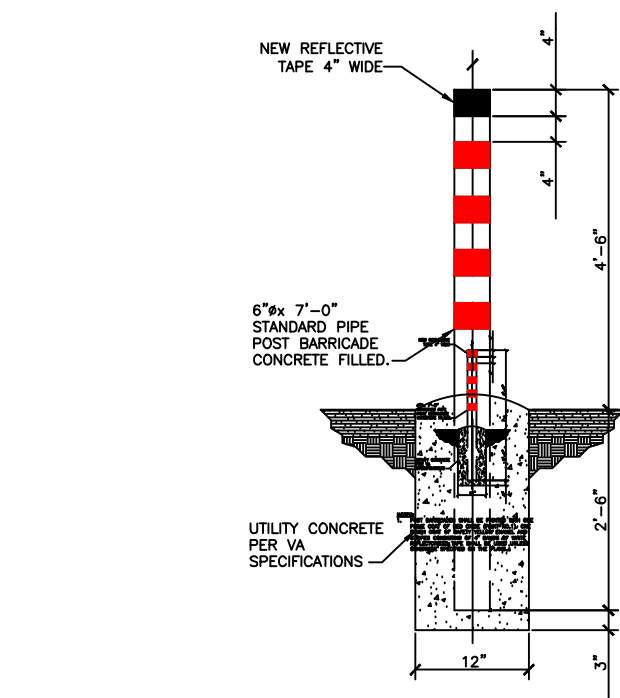
Department of Veterans Affairs



METAL BUILDING LAYOUT

GENERAL NOTES:

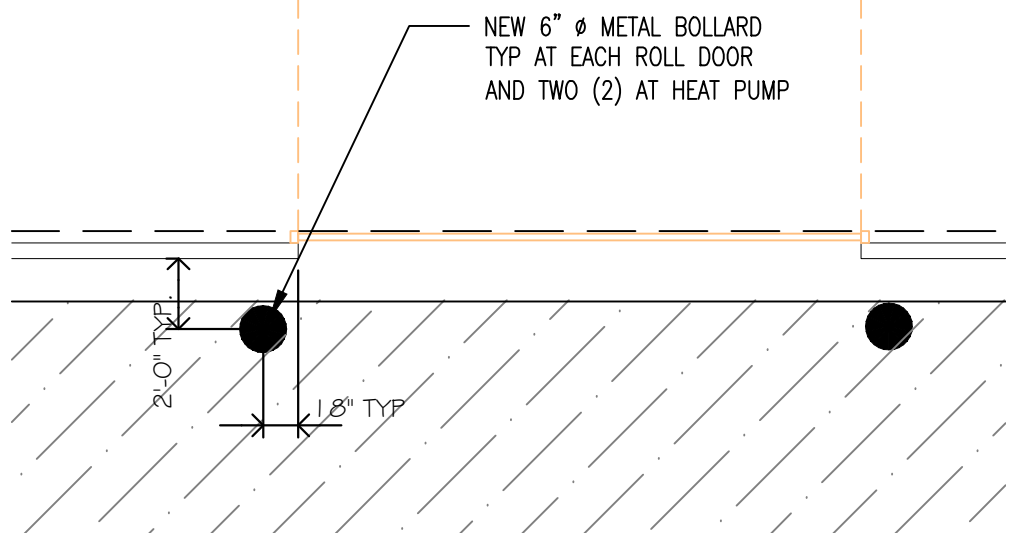
1. PROVIDE AND INSTALL NEW PRE-ENGINEERED METAL BUILDING WITH METAL ROOF WITH A CONCRETE SLAB DESIGNED BY THE PRE-ENGINEERED MANUFACTURE. INSTALL A NEW PARTITION WALL FROM FLOOR TO ROOF ABOVE. WALL IS TO BE CONSTRUCTED OF 3/4 G.W.B ON BOTH SIDES, METAL STUDS. WALL IS TO RECEIVE A NEW 6" WIDE x 7' METAL FRAME AND METAL DOOR COMPLETE WITH NEW MORTISE LOCKSET WITH THUMBTURN THAT WILL ACCEPT A SCFI FIGURE 8 CORE, WITH FLUSH BOLTS. THE WHOLE BUILDING IS TO BE SPRINKLERED. TIE NEW SPRINKLER SYSTEM INTO EXISTING SPRINKLER LINE FROM BUILDING 17B. THE CONTRACTOR IS TO PROVIDE CERTIFIED SPRINKLER DRAWING PRIOR TO INSTALLING NEW SPRINKLER SYSTEM. THE NEW BUILDING IS TO HAVE METAL GUTTERS AND DOWNSPOUTS. INSTALL NEW 2x4" HIGH BAY LIGHT FIXTURES IN ALL AREAS. NUMBER OF LIGHTS ARE TO EQUAL .75 WATTS PER S.F. INSTALL ONE (1) EXHAUST FAN LARGE ENOUGH TO HAVE SEVEN (7) COMPLETE AIR CHANGE PER HOUR. TIE FAN INTO A THERMOSTAT TO ACTIVATE THE FAN. INSTALL NEW MITSUBISHI HEAT PUMP MODEL MUZ-D30NA (OUTDOOR UNIT) AND MS2-D30NA (INDOOR UNIT) OR EQUAL TYPE SYSTEM. NEW HEAT PUMP SYSTEM TO HAVE THERMOSTAT MOUNTED ON WALL INSIDE DOUBLE DOOR. PAINT NEW METAL STUD AND G.W.B WALL, METAL DOORS AND FRAME. THE BUILDING IS TO BE INSULATION AS PER REQUIREMENTS BELOW ON THIS SHEET.
2. THE NEW BUILDING IS TO HAVE FOUR (4) 14' HIGH x 13' WIDE INSULATED ROLL UP DOORS COMPLETE WITH HEAVY DUTY MOTOR WITH KEY ACCESS TO UNLOCK AND ACTIVATE THE ROLL UP DOOR.
3. INSTALL NEW 200 AMP ELECTRICAL PANEL, 208 3 PHASE, COMPLETE WITH 10, 20 AMP BREAKERS, 22,000 AIC BOLT IN BREAKERS. THIS PANEL TO TIE INTO EXISTING PANEL "B" ON THE 1ST FLOOR OF BUILDING 16. RUN NEW 4" Ø RACEWAY AS REQUIRED BY VA SPECS AND N.E.C. PULL NEW 300 MCM WIRE FROM PANEL "B" TO PANEL IN NEW BUILDING.
4. INSTALL NEW ELECTRICAL OUTLETS AND DATA LINES IN OFFICE AREA. CONTRACTOR TO HAVE ALL CAT 6 CABLE PULLED THROUGH RACEWAY.
5. INSTALL NEW 2' x 4' HIGH BAY T-5 LIGHT FIXTURES WITH LENS COVERS. INSTALL AT 15'-0" A.F.F.
6. INSTALL NEW 3000# CONCRETE PAD FOR THE NEW A/C UNIT FOR OFFICE AREA. INSTALL NEW DISCONNECT AND WEATHERPROOF DUPLEX OUT AND COVER. INSTALL TWO (2) METAL BOLLARD AS PER DETAIL THIS SHEET.
7. **INSTALL 8" DEEP NC DOT ABC STONE AND COMPACT AS SPECIFICATION 32 1.2.43 REQUIRE AND INSTALL NEW POROUS PAVEMENT AS REQUIRED IN AREA INDICATED.**
8. INSTALL ONE (1) NEW UNIT HEATER WITH FANS. SIZE UNITS SO THAT THE AREA OF THE NEW MAIN AREA OF THE BUILDING WILL MAINTAIN A 50° TEMPERATURE WITHOUT DAMAGE TO THE UNIT. TIE NEW FAN INTO NEW THERMOSTAT.
9. INSTALL TWO (2) STEEL BOLLARDS AT EACH ROLL UP DOOR AS PER DETAIL THIS SHEET. INSTALL AT 18" AWAY FROM BUILDING.
10. INSTALL LED EXIT LIGHTS OVER BOTH PASSAGE DOORS.
11. INSTALL NEW FLORESCENT LIGHT FIXTURES ON OUTSIDE OF EACH PASSAGE DOOR. LIGHT FIXTURE TO HAVE PHOTO CELL FOR TURNING ON AND OFF.



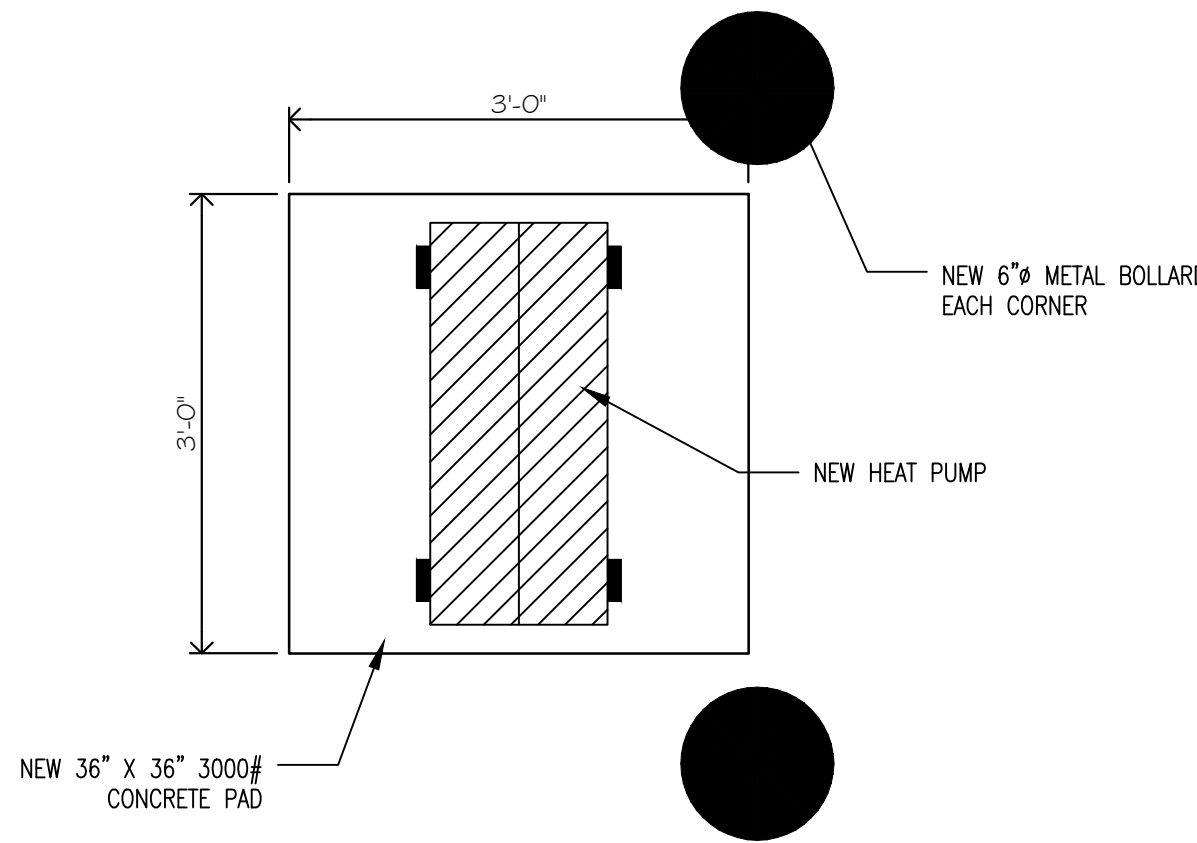
- NOTES:
1. POST BARRICADES SHALL BE PAINTED WITH ONE PRIME COAT OF RED OXIDE (PAINT NO.1), ONE FINISH COAT OF SAFETY YELLOW ENAMEL AND STRIPES CONSISTING OF 4" BANDS OF WHITE REFLECTORIZED TAPE SHALL BE USED UNLESS OTHERWISE SPECIFIED ON THE PLANS.

BOLLARD POST DETAIL
N.T.S.

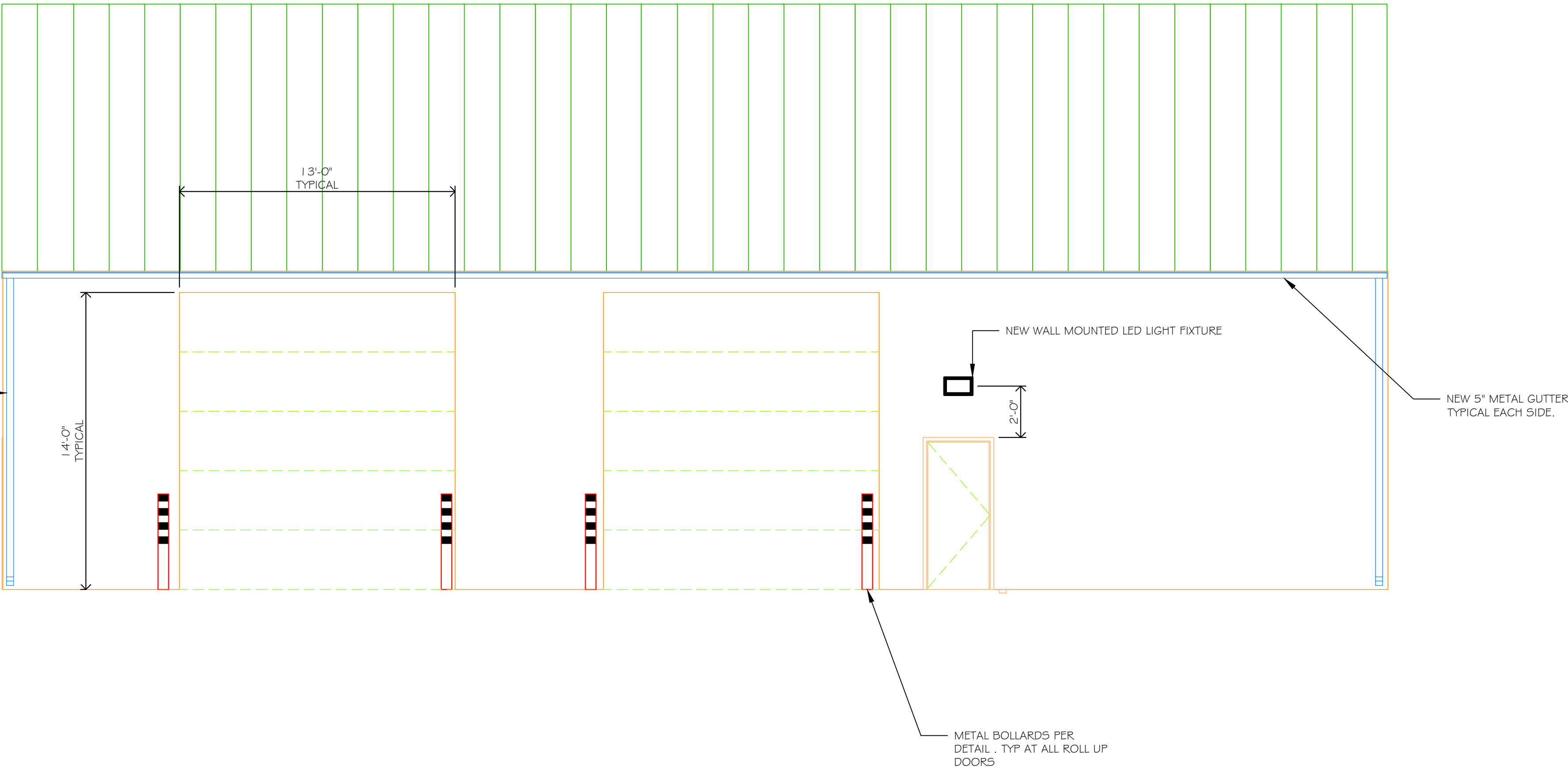
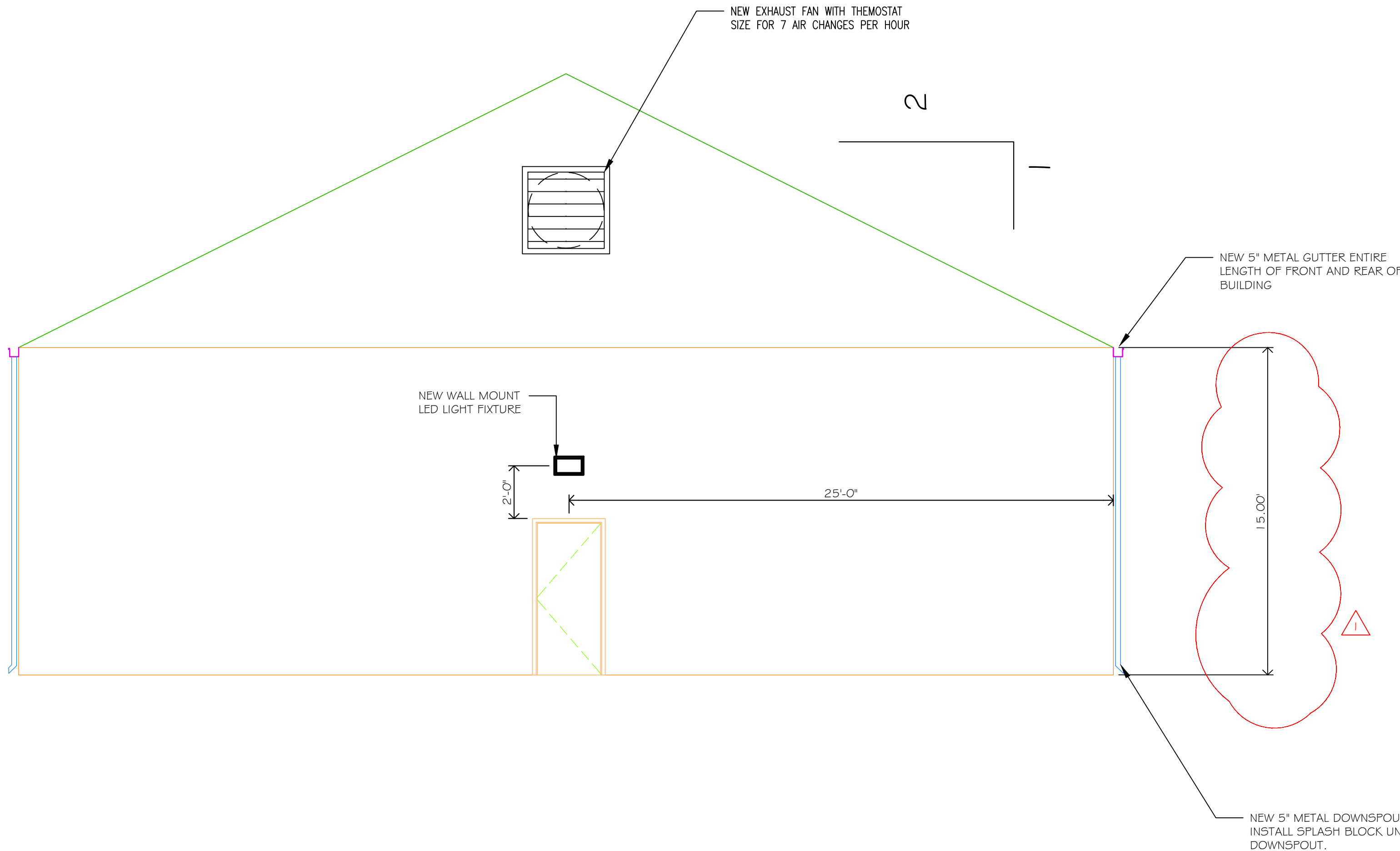
SITE PLAN FOR CONCRETE AND POROUS PAVEMENT
1"= 30'



BOLLARD POST LOCATION
N.T.S.



HEAT PUMP PAD
N.T.S.



INSULATION VALUES						
PER ASHRAE STANDARD 90.1-2010						
STATION	CLIMATE ZONE	ROOF INSULATION	WALL INSULATION	FLOOR INSULATION	DOOR MAX OVERALL U/F	MAX U/F WINDOW
SALSBURY (659)		R20 G.I. METAL R1.5 IN ATTIC R3.5	R13.5 7.25 G.I. METAL R1.5 MASS 9.5 G.I.	R30 SLAB R1.5 FOR 24"	0.07	0.06
						0.25

REV 1 - CHG'S NOTE 7 ON SHT 7 FROM ASPHALT TO POROUS PAVEMENT AND SITE PLAN TITLE

Revision Date

9-3-12

Date

RECOMMEND APPROVAL

REQUESTER	Date	CHIEF OF SERVICE	Date	CHIEF OF STAFF	Date
ASSOC. DIR. PATIENT CARE SVC.	Date	ASSOC. DIR. for OPERATIONS	Date		
APPROVAL BY:	Date				
MEDICAL CENTER DIRECTOR					

Drawing Title

SITE PLAN, BUILDING LAYOUT AND NOTES

Approved: Safety Manager/M&O Supervisor

Approved: Chief of Facilities Management Svr.

Project Title

CONSTRUCT NEW METAL BUILDING B17C

Building Number

Checked

Drawn

GLM

Location

W.G.(Bill) Hefner Medical Center
1601 Brenner Ave.
Salisbury NC 28144

Date

6-14-2012

Project No.

659-12-250

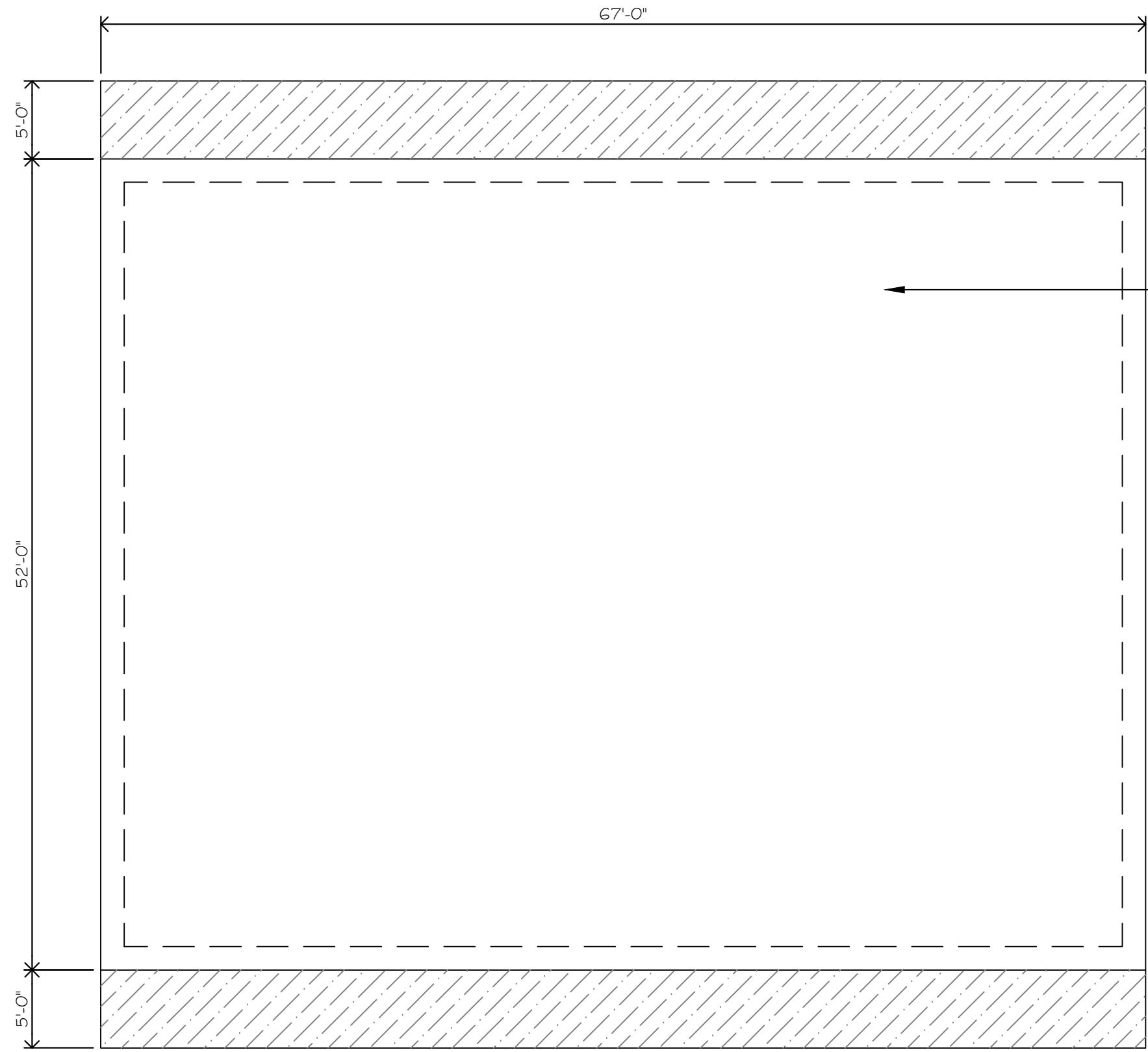
DRAWING NO.

2R

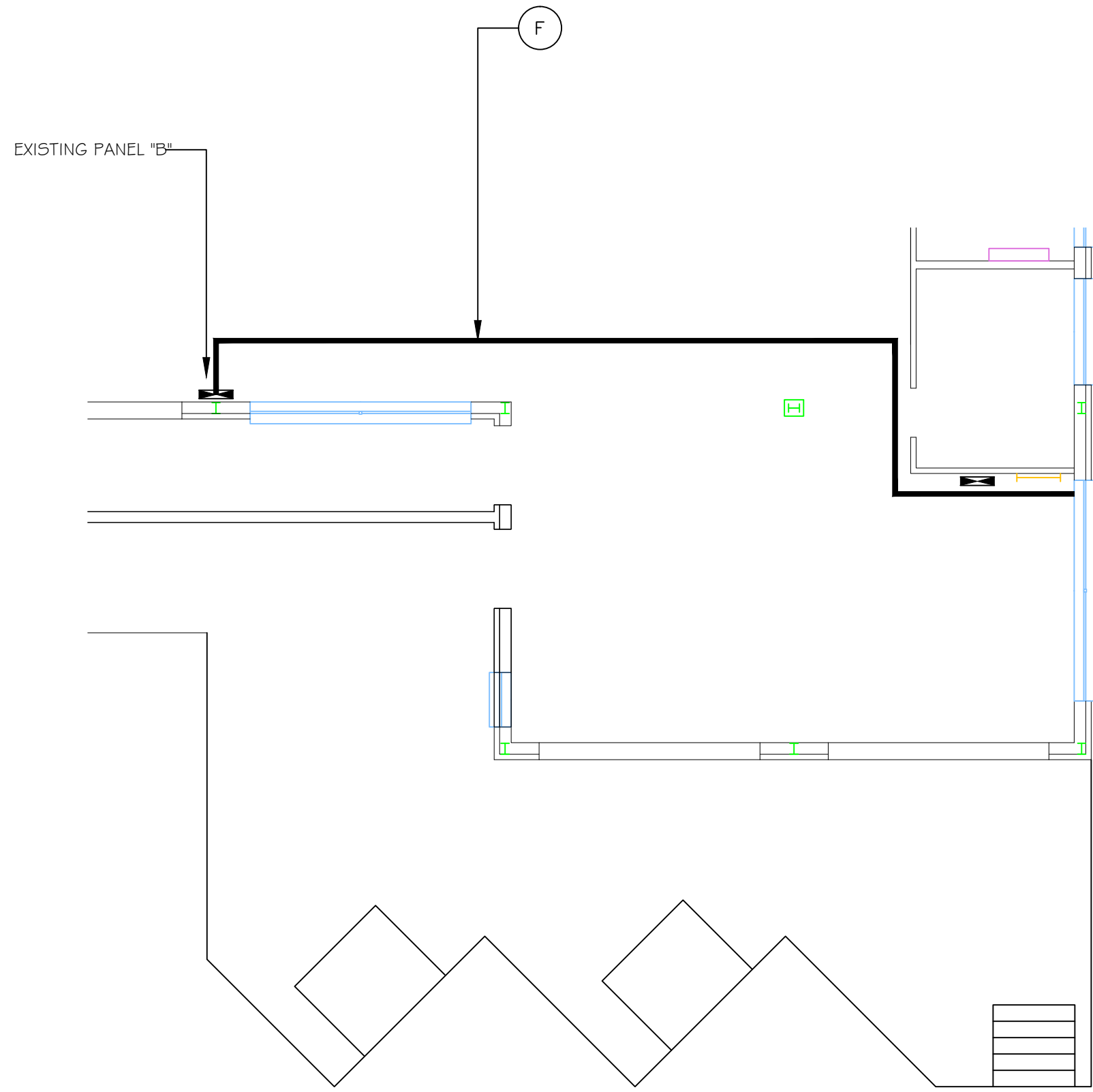
DWG. 2 OF 4



Department of Veterans Affairs



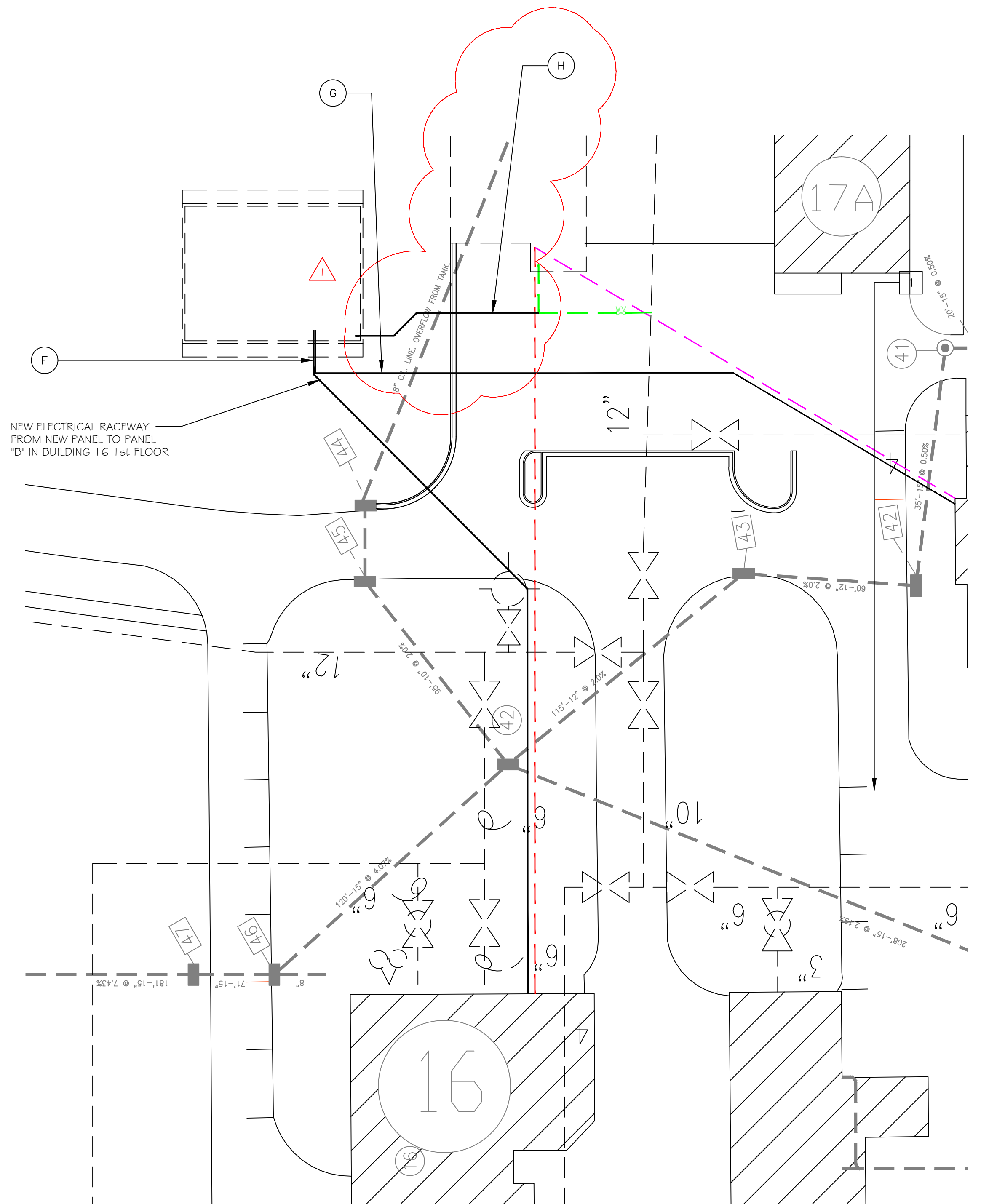
NEW PRE-ENGINEERED BUILDING CONCRETE SLAB
N.T.S.



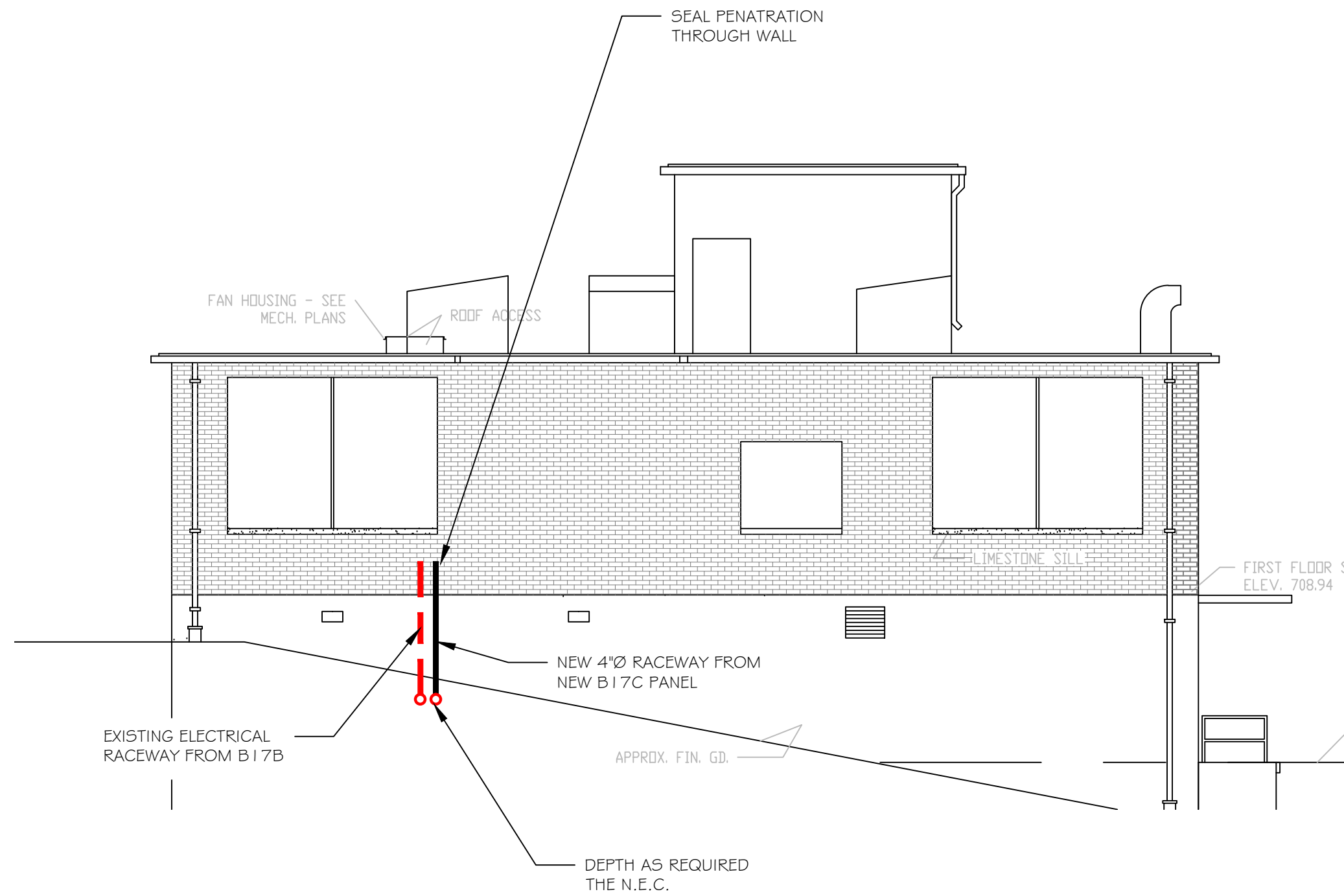
BUILDING 16 1st FLOOR
1 1/2" = 1'-0"

GENERAL NOTES FOR SHEET 3:

- FORM AND POUR NEW 3000# CONCRETE OR AS REQUIRE BY PRE-ENGINEERED BUILDING MANUFACTURE. INSTALL ALL REQUIRED REBAR, BOLTS ETC., AS REQUIRED BY MANUFACTURE.
- FORM AND POUR NEW 3000# CONCRETE FOR NEW 5' WIDE x THE LENGTH OF THE BUILDING IN FRONT AND BACK OF NEW METAL BUILDING. THIS SECTION TO SLOPE 1/8" PER FOOT AWAY FROM BUILDING. THE SECTIONS ARE TO GET A LIGHT BROOM FINISH.
- INSTALL A 3000# CONCRETE 5'-0" X 5'-0" X 4" THICK AT DOOR ON THE NORTH SIDE OF THE BUILDING. CENTER PAD TO THE CENTER OF THE DOOR.
- INSTALL A NEW 3'-0" X 3'-0" X 4" THICK 3000# CONCRETE PAD FOR THE NEW AIR CONDITIONING UNIT ON THE SOUTH SIDE OF THE BUILDING.
- NEW POWER AND SPRINKLER LINES ARE TO COME THROUGH NEW CONCRETE FLOOR. THESE NEED TO BE INSTALLED PRIOR TO INSTALLING CONCRETE.
- INSTALL NEW 4" Ø RACEWAY FOR NEW 200 AMP POWER PANEL. RUN NEW RACEWAY FROM NEW BUILDING 17C TO BUILDING 16 PANEL "B" LOCATED ON 1ST FLOOR IN MIDDLE OF BUILDING. RUN RACEWAY UP OUTSIDE WALL AND THROUGH WALL AND AT FLOOR HEIGHT ALONG INSIDE WALL BEHIND LADDER TO ROOF AND UP AND OVER TO PANEL "B" IN THE MIDDLE OF B 16 1ST FLOOR. PANEL "B" IS AN 225 AMP PANEL, SO REMOVE REQUIRED BREAKER NEEDED TO INSTALL A NEW 200 AMP 3 PHASE 22,000 AIC BREAKER. TURN OVER REMOVED BREAKER TO VA. INSTALL NEW CABLE SIZED FOR THE DISTANCE BETWEEN THE TWO BUILDING.
- INSTALL NEW 4" Ø RACEWAY FROM NEW BUILDING TO EXISTING BUILDING 18 BOILER PLANT AND INTO EXISTING ROOM BH-10 INSIDE THE BUILDING FOR NEW DATA AND TELEPHONE LINES AND INSTALL NEW PULL-STRINGS. CONTACT TARHEEL COMMUNICATIONS FOR PRICING ON THE INSTALLATION OF TELEPHONE AND DATA.
- PROVIDE AND INSTALL NEW SPRINKLER SYSTEM. SPRINKLER SYSTEM TO BE DESIGNED BY A CERTIFIED SPRINKLER DESIGNER OR ENGINEER WHO IS CERTIFIED IN FIRE SYTEMS DESIGN. TIE NEW SYSTEM INTO EXISTING SPRINKLER SYSTEM FROM B 17B EXISTING SYSTEM.



SITE PLAN FOR ELECTRICAL, TELEPHONE AND SPRINKLER
1" = 30'



BUILDING 16 EAST ELEVATION
1 1/2" = 1'-0"

Revision	Date
REV 1 - ADDED SPRINKLER NOTE AND SPRINKLER LINE AND SITE PLAN TITLE	9-3-12

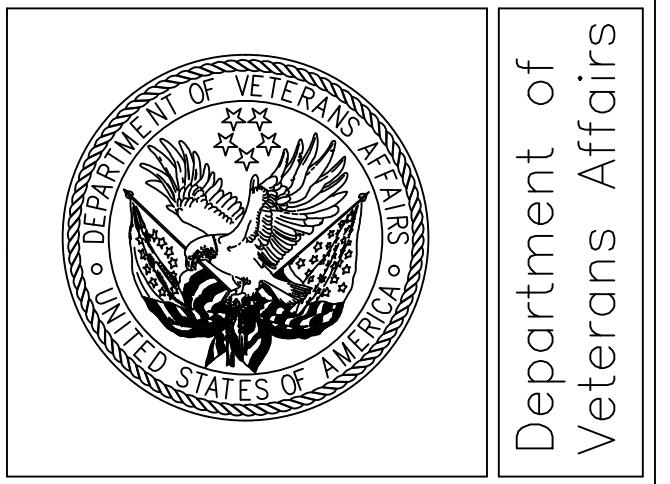
Requester	Date	Chief of Service	Date	Assoc. Dir. Patient Care Svc.	Date	Assoc. Dir. for Operations	Date	Approval By:	Date
								MEDICAL CENTER DIRECTOR	

RECOMMEND APPROVAL			
Requester	Date	Chief of Staff	Date
Chief of Service	Date	Assoc. Dir. for Operations	Date
Assoc. Dir. Patient Care Svc.	Date	Assoc. Dir. for Operations	Date
Approval By:	Date	MEDICAL CENTER DIRECTOR	

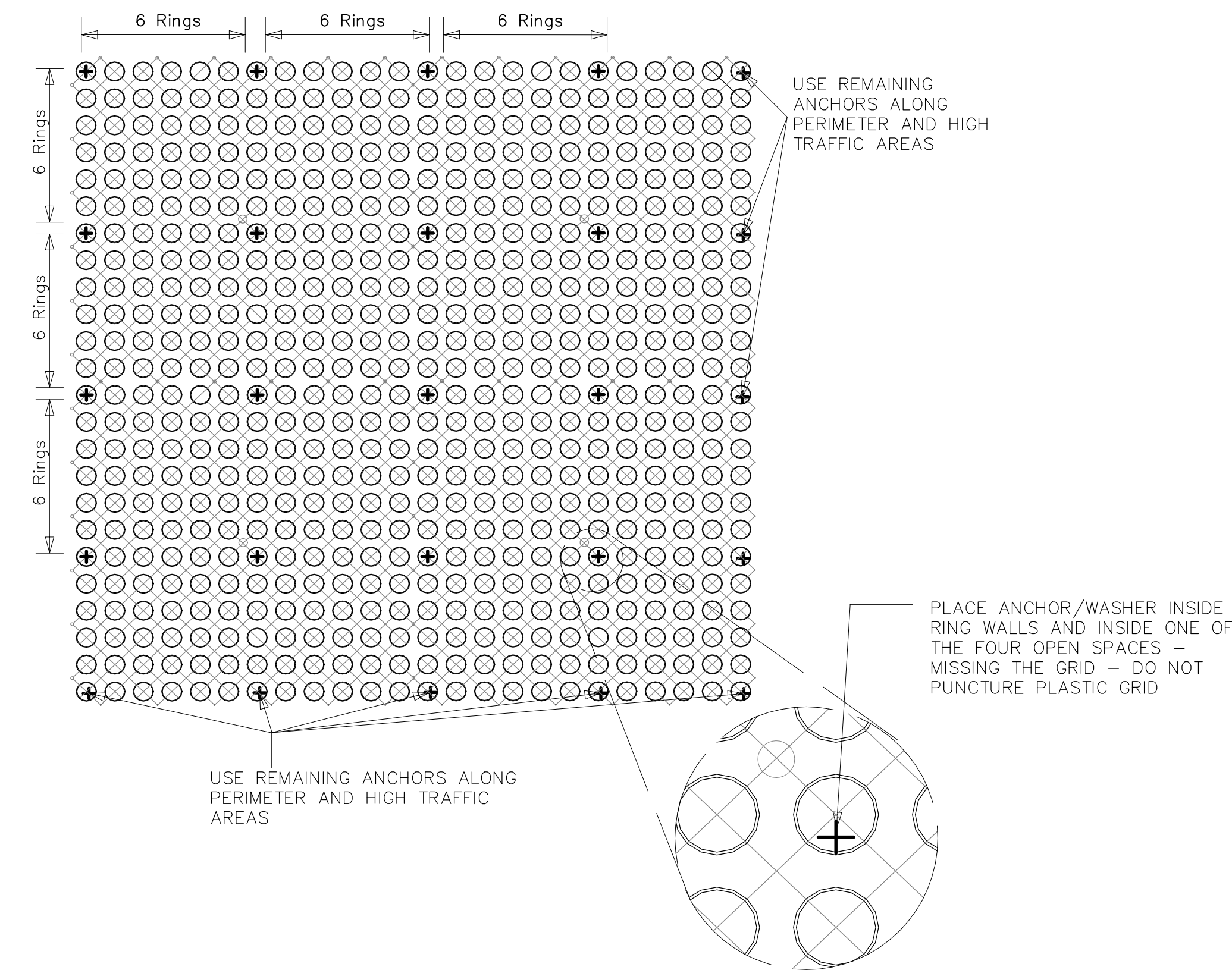
Drawing Title
SITE PLAN FOR ELECTRICAL, CONCRETE PLAN
Approved: Safety Manager/M&O Supervisor
Approved: Chief of Facilities Management Svr.

Project Title		
CONSTRUCT NEW METAL BUILDING B 17C		
Building Number	Checked	Drawn
	GLM	
Location	W.G.(Bill) Hefner Medical Center 1601 Brenner Ave. Salisbury NC 28144	

Date	6-14-2012
Project No.	659-12-250
Drawing No.	3R
DWG.	3 OF 4



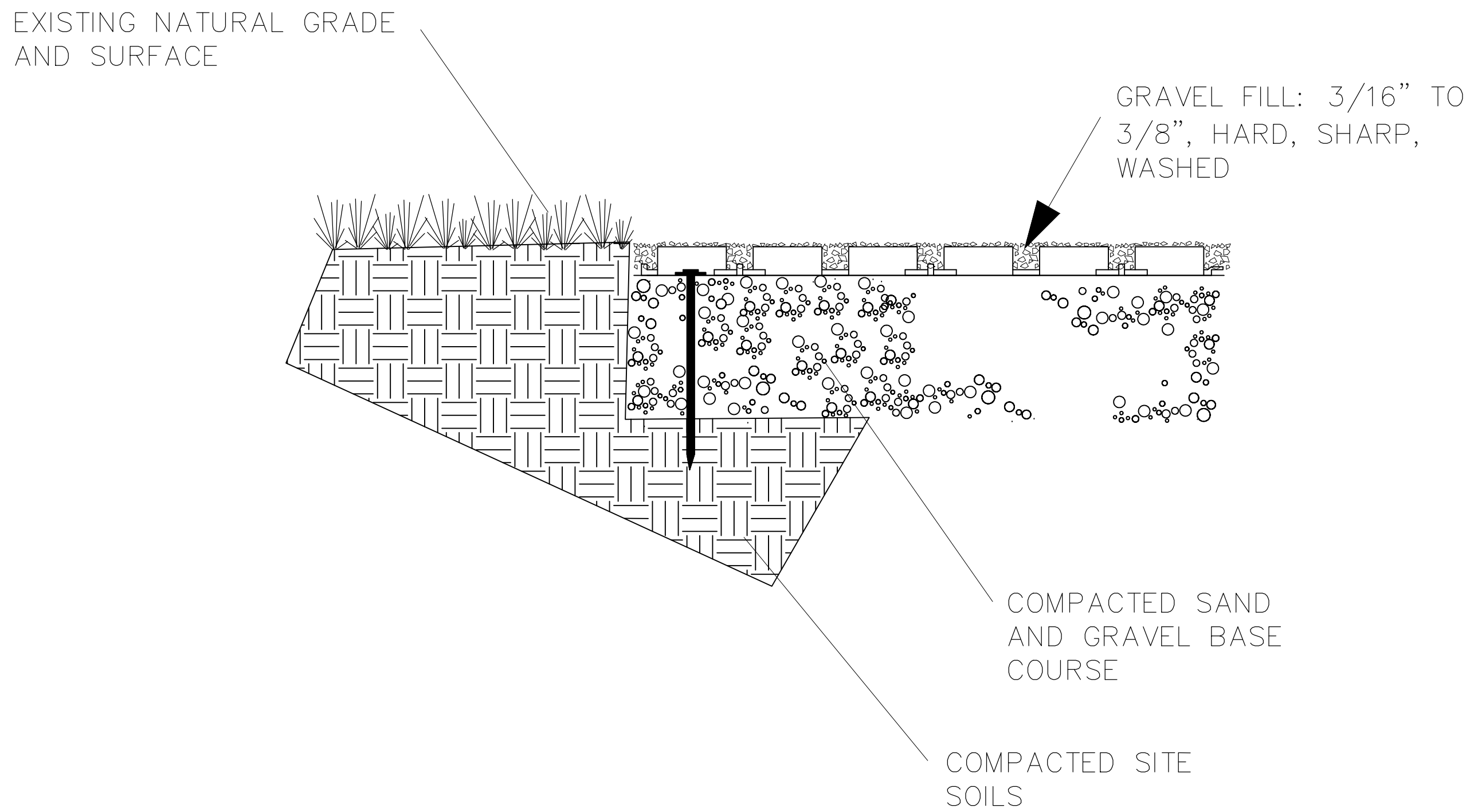
Department of
Veterans Affairs



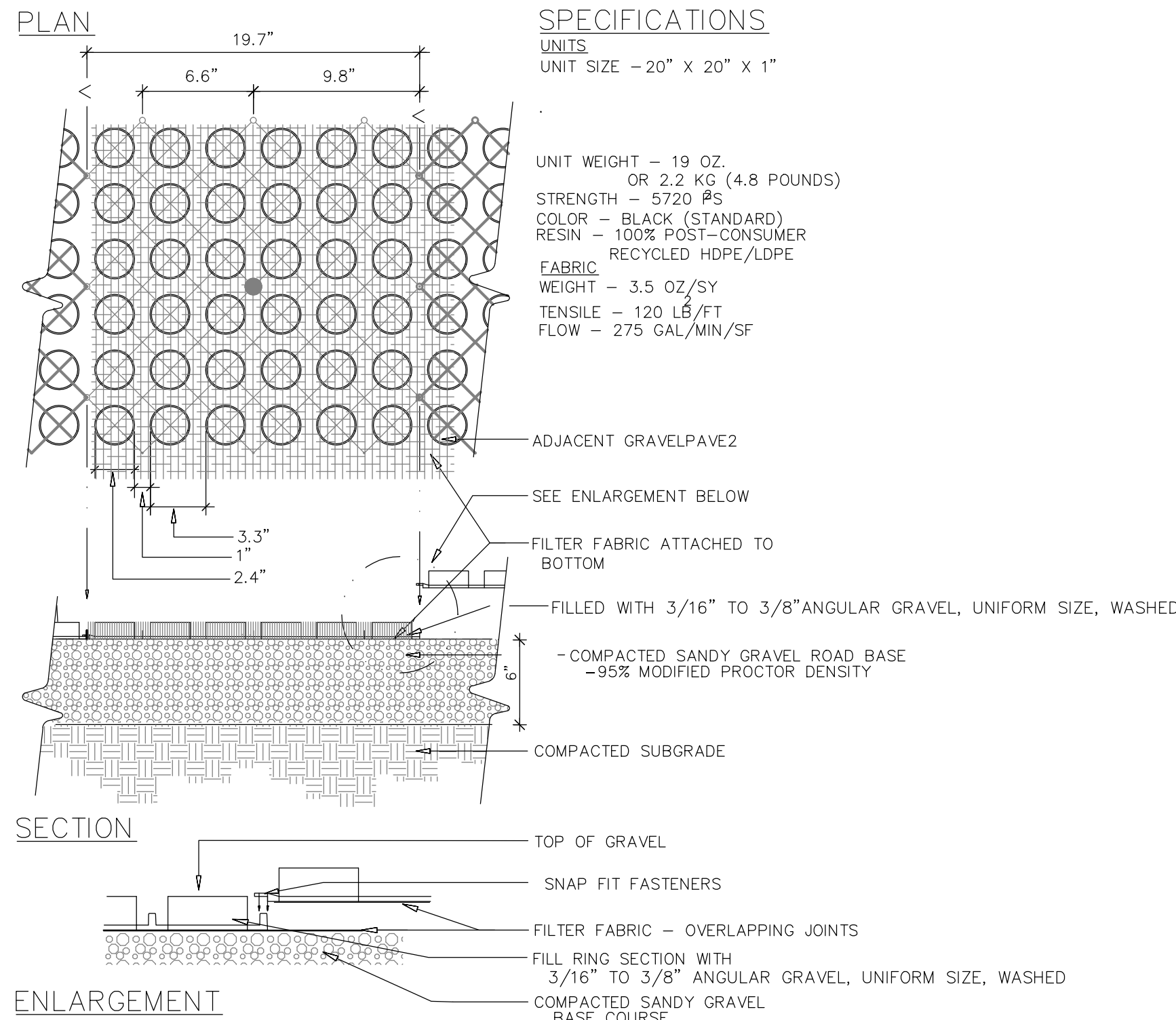
POUROUS PAVEMENT PINNING INSTRUCTIONS 60 ANCHORS SUPPLIED PER 108 SQ FT (10 SQ M) SIZE AND TYPE OF ANCHOR MAY VARY

1. PLACE ONE ANCHOR (MINIMUM) EVERY SIX RINGS
2. PLACE ANCHOR INSIDE RINGS, IN ONE OF THE FOUR OPEN SPACES (DO NOT PUNCTURE GRID).
3. PLACE REMAINING ANCHORS AROUND PERIMETER OF SITE AND IN HIGH TRAFFIC AREAS

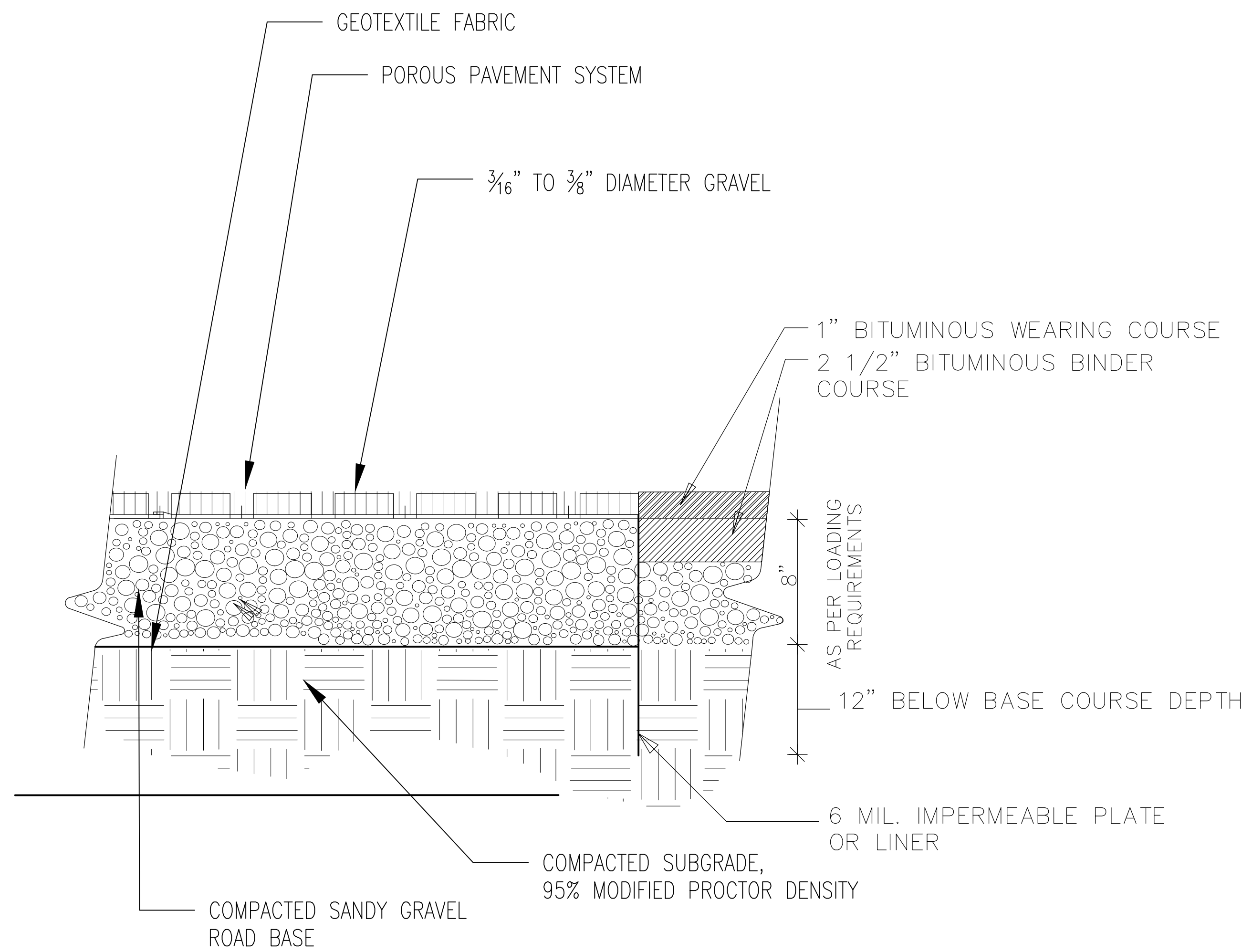
POROUS PAVEMENT DETAILS A
N.T.S.



SECTION NATURAL GRADE & POROUS PAVEMENT
N.T.S.



POROUS PAVEMENT DETAILS B
N.T.S.



SECTION AT ASPHALT & POROUS PAVEMENT
N.T.S.

																																																																																																																																																																																																																																																																																																																																																																																																																																																																																																																																																																																																																																																																																																																																																																																																																																																																																																																																																																																																																																																																																																																																																																																																																																																																																																																																																																																																																											</
--	--	--	--	--	--	--	--	--	--	--	--	--	--	--	--	--	--	--	--	--	--	--	--	--	--	--	--	--	--	--	--	--	--	--	--	--	--	--	--	--	--	--	--	--	--	--	--	--	--	--	--	--	--	--	--	--	--	--	--	--	--	--	--	--	--	--	--	--	--	--	--	--	--	--	--	--	--	--	--	--	--	--	--	--	--	--	--	--	--	--	--	--	--	--	--	--	--	--	--	--	--	--	--	--	--	--	--	--	--	--	--	--	--	--	--	--	--	--	--	--	--	--	--	--	--	--	--	--	--	--	--	--	--	--	--	--	--	--	--	--	--	--	--	--	--	--	--	--	--	--	--	--	--	--	--	--	--	--	--	--	--	--	--	--	--	--	--	--	--	--	--	--	--	--	--	--	--	--	--	--	--	--	--	--	--	--	--	--	--	--	--	--	--	--	--	--	--	--	--	--	--	--	--	--	--	--	--	--	--	--	--	--	--	--	--	--	--	--	--	--	--	--	--	--	--	--	--	--	--	--	--	--	--	--	--	--	--	--	--	--	--	--	--	--	--	--	--	--	--	--	--	--	--	--	--	--	--	--	--	--	--	--	--	--	--	--	--	--	--	--	--	--	--	--	--	--	--	--	--	--	--	--	--	--	--	--	--	--	--	--	--	--	--	--	--	--	--	--	--	--	--	--	--	--	--	--	--	--	--	--	--	--	--	--	--	--	--	--	--	--	--	--	--	--	--	--	--	--	--	--	--	--	--	--	--	--	--	--	--	--	--	--	--	--	--	--	--	--	--	--	--	--	--	--	--	--	--	--	--	--	--	--	--	--	--	--	--	--	--	--	--	--	--	--	--	--	--	--	--	--	--	--	--	--	--	--	--	--	--	--	--	--	--	--	--	--	--	--	--	--	--	--	--	--	--	--	--	--	--	--	--	--	--	--	--	--	--	--	--	--	--	--	--	--	--	--	--	--	--	--	--	--	--	--	--	--	--	--	--	--	--	--	--	--	--	--	--	--	--	--	--	--	--	--	--	--	--	--	--	--	--	--	--	--	--	--	--	--	--	--	--	--	--	--	--	--	--	--	--	--	--	--	--	--	--	--	--	--	--	--	--	--	--	--	--	--	--	--	--	--	--	--	--	--	--	--	--	--	--	--	--	--	--	--	--	--	--	--	--	--	--	--	--	--	--	--	--	--	--	--	--	--	--	--	--	--	--	--	--	--	--	--	--	--	--	--	--	--	--	--	--	--	--	--	--	--	--	--	--	--	--	--	--	--	--	--	--	--	--	--	--	--	--	--	--	--	--	--	--	--	--	--	--	--	--	--	--	--	--	--	--	--	--	--	--	--	--	--	--	--	--	--	--	--	--	--	--	--	--	--	--	--	--	--	--	--	--	--	--	--	--	--	--	--	--	--	--	--	--	--	--	--	--	--	--	--	--	--	--	--	--	--	--	--	--	--	--	--	--	--	--	--	--	--	--	--	--	--	--	--	--	--	--	--	--	--	--	--	--	--	--	--	--	--	--	--	--	--	--	--	--	--	--	--	--	--	--	--	--	--	--	--	--	--	--	--	--	--	--	--	--	--	--	--	--	--	--	--	--	--	--	--	--	--	--	--	--	--	--	--	--	--	--	--	--	--	--	--	--	--	--	--	--	--	--	--	--	--	--	--	--	--	--	--	--	--	--	--	--	--	--	--	--	--	--	--	--	--	--	--	--	--	--	--	--	--	--	--	--	--	--	--	--	--	--	--	--	--	--	--	--	--	--	--	--	--	--	--	--	--	--	--	--	--	--	--	--	--	--	--	--	--	--	--	--	--	--	--	--	--	--	--	--	--	--	--	--	--	--	--	--	--	--	--	--	--	--	--	--	--	--	--	--	--	--	--	--	--	--	--	--	--	--	--	--	--	--	--	--	--	--	--	--	--	--	--	--	--	--	--	--	--	--	--	--	--	--	--	--	--	--	--	--	--	--	--	--	--	--	--	--	--	--	--	--	--	--	--	--	--	--	--	--	--	--	--	--	--	--	--	--	--	--	--	--	--	--	--	--	--	--	--	--	--	--	--	--	--	--	--	--	--	--	--	--	--	--	--	--	--	--	--	--	--	--	--	--	--	--	--	--	--	--	--	--	--	--	--	--	--	--	--	--	--	--	--	--	--	--	--	--	--	--	--	--	--	--	--	--	--	--	--	--	--	--	--	--	--	--	--	--	--	--	--	--	--	--	--	--	--	--	--	--	--	--	--	--	--	--	--	--	--	--	--	--	--	--	--	--	--	--	--	--	--	--	--	--	--	--	--	--	--	--	--	--	--	--	--	--	--	--	--	--	--	--	--	--	--	--	--	--	--	--	--	--	--	--	--	--	--	--	--	--	--	--	--	--	--	--	--	--	--	--	--	--	--	--	--	--	--	--	--	--	--	--	--	--	--	--	--	--	--	--	--	--	--	--	--	--	--	--	--	--	--	--	--	--	--	--	--	--	--	--	--	--	--	--	--	--	--	--	--	--	--	--	--	--	--	--	--	--	--	--	--	--	--	--	--	--	--	--	--	--	--	--	--	--	--	--	--	--	--	--	--	--	--	--	--	--	--	--	--	--	--	--	--	--	--	--	--	--	--	--	--	--	--	--	--	--	--	--	--	--	--	--	--	--	--	--	--	--	--	--	--	--	--	--	--	--	--	--	--	--	--	--	--	--	--	--	--	--	--	--	--	--	--	--	--	--	--	--	--	--	--	--	--	--	--	--	--	--	--	--	--	--	--	--	--	--	--	--	--	--	--	--	--	--	--	--	--	--	--	--	--	--	--	--	--	--	--	--	--	--	--	--	--	--	--	--	--	--	--	--	--	--	--	--	--	--	--	--	--	--	--	--	--	--	--	--	--	--	--	--	--	--	--	--	--	--	--	--	--	--	--	--	--	--	--	--	--	--	--	--	--	--	--	--	--	--	--	--	--	--	--	--	--	--	--	--	--	--	--	--	--	--	--	--	--	--	--	--	--	--	--	--	--	--	--	--	--	--	--	--	--	--	--	--	--	--	--	--	--	--	--	--	--	--	--	--	--	--	--	--	--	--	--	--	--	--	--	----