

- GENERAL SELECTIVE DEMOLITION NOTES:

1. SELECTIVE DEMOLITION REFERENCE NOTES ARE INTENDED TO GENERALLY LOCATIONS WHERE REQUIRED AND SHALL NOT BE USED TO RELIEVE THE CONTRACTOR OF THE FULL RESPONSIBILITY FOR EXAMINING AND VERIFYING THE FULL EXTENT OF EXISTING CONDITIONS.

2. EXISTING CONDITIONS REQUIRING PARTIAL OR COMPLETE REMOVAL AND/OR MODIFICATION TO COMPONENTS OR ASSEMBLIES PERTAINING TO THE EXISTING BUILDING STRUCTURE.

3. REPAIRS AND/OR MODIFICATIONS TO EXISTING MECHANICAL, PLUMBING, AND ELECTRICAL SYSTEMS, ELECTRICAL BRACKETS FOR SERVICE, AND/OR MODIFICATION OF ITEMS RELATED TO EXISTING MECHANICAL, PLUMBING, AND ELECTRICAL SYSTEMS.

4. ALL ACCESSORIES RELATED TO THE REMOVED ITEMS (SUCH AS ANCHORS, SUPPORTS, HANG PIERCES, ETC.) SHALL BE REMOVED INCLUDING BUT NOT LIMITED TO CONDUIT, WIRING MOTORS AND CONTROLS.

5. DISRUPTION OF EXISTING UNDERGROUND UTILITIES AND STEEL LINES IN THE PROJECT VICINITY.

6. THE CONTRACTOR IS RESPONSIBLE FOR REMOVING ALL ITEMS FROM THE WORK AREA AS REQUIRED FOR NEW CONSTRUCTION INCLUDING BUT NOT LIMITED TO EXISTING UNDERGROUND UTILITIES AND STEEL LINES IN THE PROJECT VICINITY.

7. STEEL CASINGS AROUND COLUMNS, CONCRETE PAVING AND INLET DRAINS.
- KEYNOTES: (KEYNOTES REFERENCED THIS SHEET ONLY)

1. REMOVE EXISTING DOOR AND FRAME REMAIN.

2. EXISTING GROUND AND EXISTING FOUNDATION REMAIN.

3. EXISTING ROOF LEADER TO REMAIN.

4. EXISTING ROOF LEADER TO REMAIN.

5. EXISTING ROOF LEADER TO REMAIN.

6. REMOVE EXISTING STEEL PLATEFORM AND RAILING.

7. REMOVE EXISTING CHAIN LINK FENCE AND SLIDING GATE.

8. EXISTING COLUMN TO REMAIN.

9. REMOVE EXISTING FACE BRICK AND RIGID INSULATION. PREPARE FOR REPAIRS AND/OR MODIFICATIONS TO EXISTING MECHANICAL, PLUMBING, AND ELECTRICAL SYSTEMS.

10. REMOVE EXISTING SUPERFLOOR PLASTER CEILING AND INSULATION FOR ALL AREAS FOR NEW WORK.

11. EXISTING EXISTING SUPERFLOOR PLASTER CEILING AND INSULATION FOR ALL AREAS FOR NEW WORK.

12. REMOVE EXISTING CONCRETE PAVING FOR BUILDING PAD AREA. REFER TO MECHANICAL DRAWINGS FOR LOCATIONS OF FOUNDATIONS FOR PROPOSED WORK.

13. REMOVE EXISTING DOCK LEVELERS, DOCK LIFTS, DOCK BUMPERS, DOCK SEALS AND RELATED ACCESSORIES, CONDUIT, WIRING, ETC.

14. REMOVE EXISTING FACE BRICK AND RIGID INSULATION. PREPARE WALL FOR METAL STUDS AND GYPSUM BOARD IN PLACE OF REMOVED BRICK. REFER TO FLOOR PLANS AND REFERENCED WALL SECTIONS AND PLAN DETAILS.

15. EXISTING ELECTRICAL BUS DUCT, CONDUIT AND WIRING TO REMAIN.

16. REMOVE EXISTING HEATER, HVAC DUCT OR EQUIPMENT ITEM. SEE MECHANICAL DRAWINGS FOR DETAILS.

17. EXISTING ELECTRICAL BUS DUCT, CONDUIT AND WIRING TO REMAIN.

18. REMOVE EXISTING HEATER, HVAC DUCT OR EQUIPMENT ITEM. SEE MECHANICAL DRAWINGS FOR DETAILS.

19. EXISTING CONCRETE PLATEFORM.

20. EXISTING CONCRETE PLATEFORM.

21. REMOVE EXISTING METAL BEAMS, WIRE MESH AND STEEL.

22. REMOVE EXISTING METAL BEAMS, WIRE MESH AND STEEL.

23. EXISTING CAST IRON WASTE PIPING. REFER TO PLUMBING DRAWINGS FOR MODIFICATIONS TO REMAIN.

24. EXISTING CAST IRON WASTE PIPING. REFER TO PLUMBING DRAWINGS FOR MODIFICATIONS TO REMAIN.

25. EXISTING ELECTRICAL TRANSFORMER TO BE REMOVED BY SEPARATE CONTRACT PRIOR TO WORK FOR THIS PROJECT.

26. EXISTING FENCE AND POSTS TO BE REMOVED AND RELOCATED.

27. REMOVE EXISTING CONCRETE WALL.

28. EXISTING MANHOLE AND COVER TO REMAIN.

29. SHARED AREA INDICATES CONSTRUCTION WORK FOR MODIFICATION OF COL BEES. PROJECT NO. 646-366 TO BE COMPLETED PRIOR TO THIS PROJECT. OTHERS SHOWN ON THIS DRAWING FOR REFERENCE ONLY.

30. EXISTING ACCESS OPENING TO GRAVELSPACE TO REMAIN.

31. RELOCATE EXISTING CONDENSING UNIT. REFER TO MECHANICAL DRAWINGS FOR DETAILS.

32. REPAIR EXISTING CEILING PANELS. REFER TO MECHANICAL DRAWINGS FOR DETAILS.

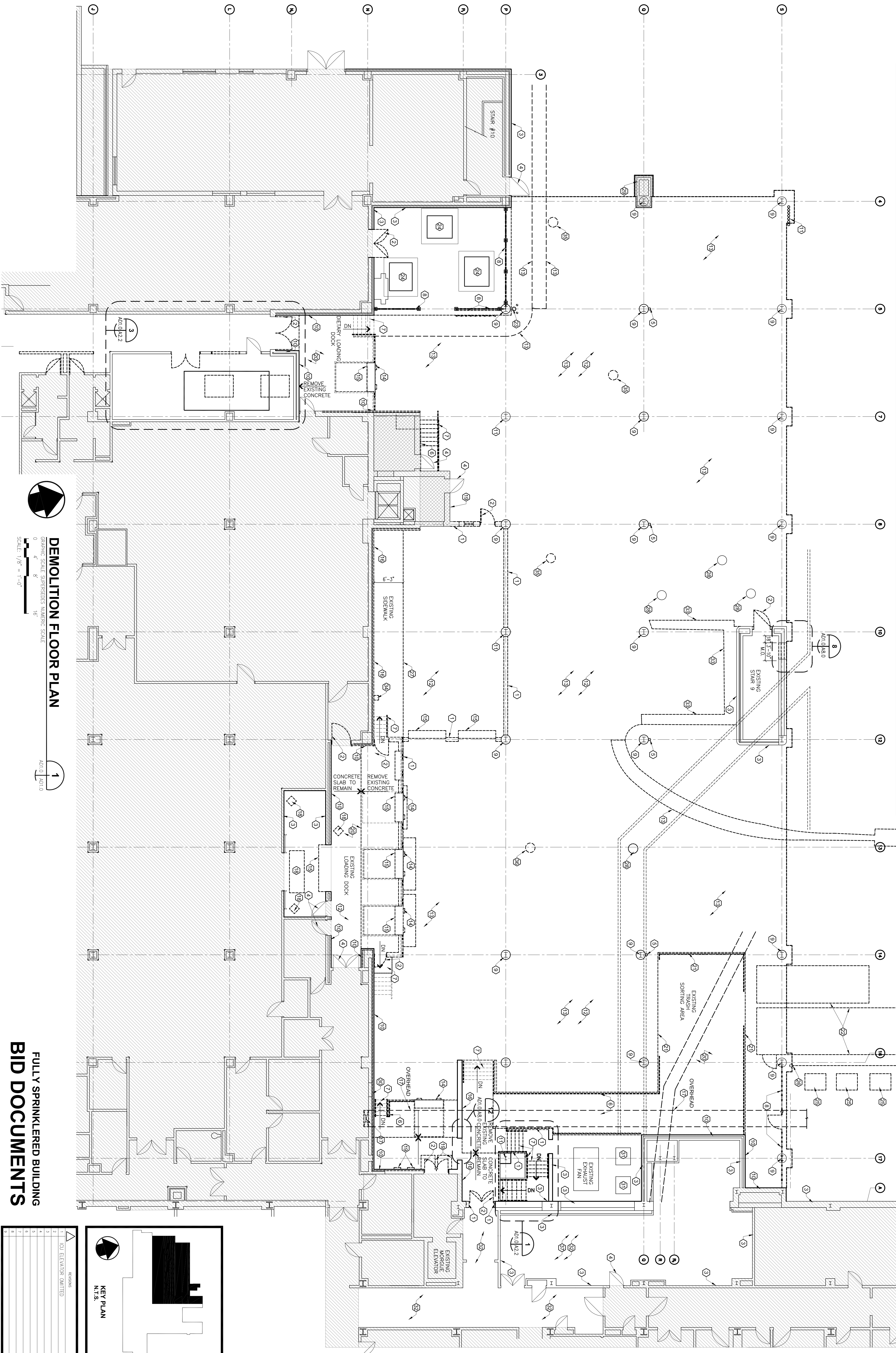
33. REMOVE EXISTING CONCRETE BARRIERS.

34. EXISTING EMERGENCY EYEWASH STATION TO BE REMOVED AND RELOCATED TO STORAGE ROOM. SEE FLOOR PLANS FOR DETAILS.

35. EXISTING MANHOLE TO BE REMOVED OR RELOCATED.

36. EXISTING STORM INLET TO BE REMOVED.

37. REMOVE EXISTING TILE FLOORING. PREPARE SURFACE TO RECEIVE NEW FLOOR FINISH.



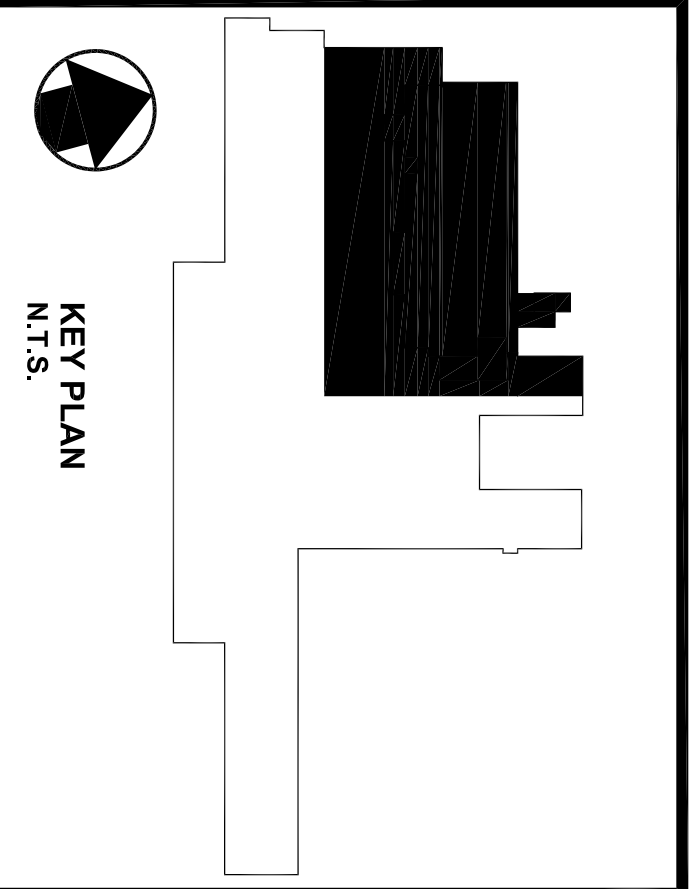
DEMOLITION FLOOR PLAN

GRAPHIC SCALE SUPERSEDES NUMERIC SCALE

0 4 8 16

SCALE: 1/8" = 1'-0"

AD1.0 AD1.0



FULLY SPRINKLERED BUILDING
BID DOCUMENTS

NO.	REVISION	DATE
1	AD1 ELEVATION OMITTED	AUGUST 21, 2012
2		
3		
4		
5		
6		
7		

Department of Veterans Affairs

UPGRADE SPD AND SECURITY DOCK
PROJECT: 646-367

VA PITTSBURGH HEALTHCARE SYSTEM
UNIVERSITY DRIVE C
PITTSBURGH, PENNSYLVANIA 15240

PARADIGM
ENGINEERS AND CONSTRUCTORS

PO BOX 436223
Louisville, Kentucky 40253
502-339-8511 www.paradigmusa.com

MADE BY
JG

DESIGNED
7-28-11

DATE
DEMOLITION FLOOR PLAN

DRAWING NO.
AD1.0R1

REV. NO.
REV. NO.