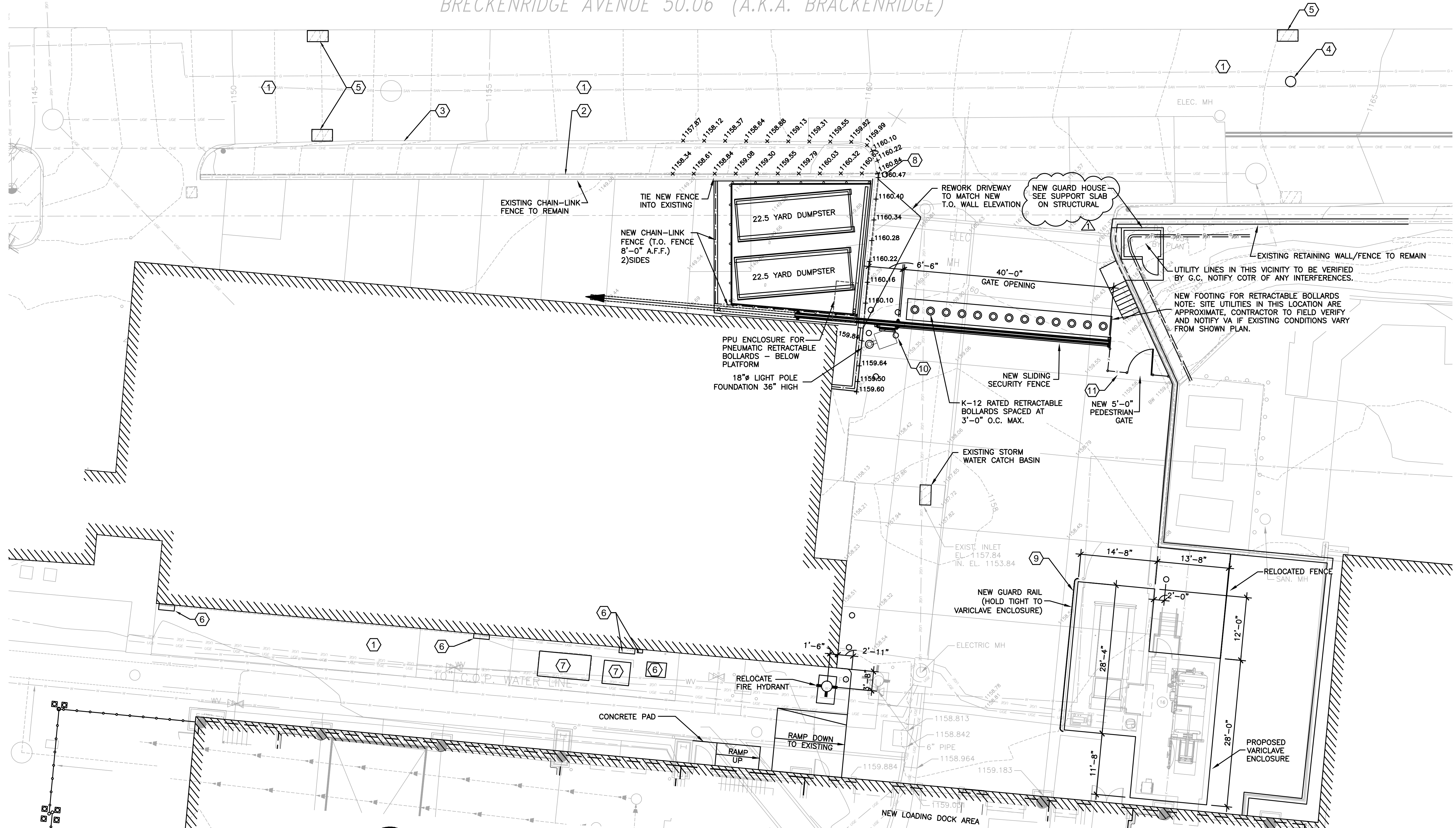


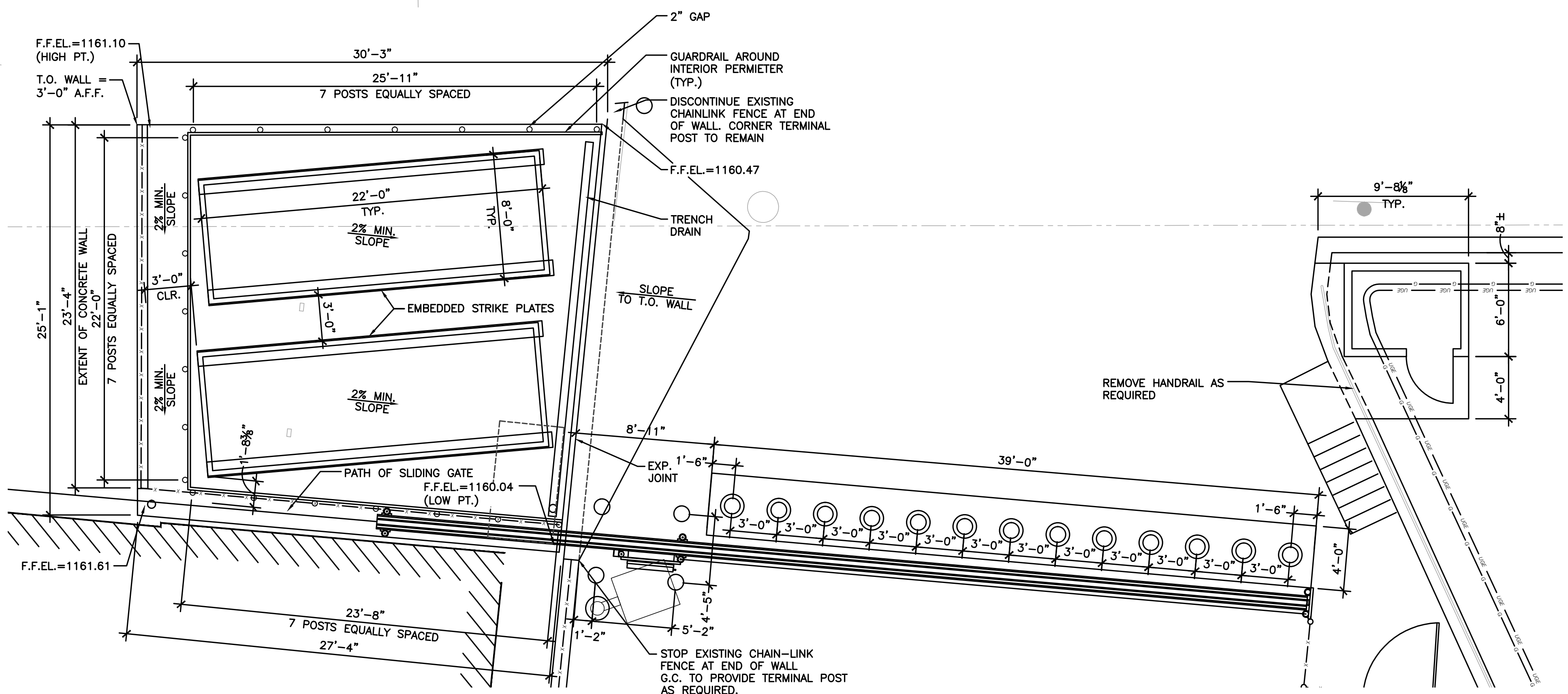
BRECKENRIDGE AVENUE 50.06' (A.K.A. BRACKENRIDGE)



PROPOSED SITE LAYOUT

GRAPHIC SCALE SUPERSEDES NUMERIC SCALE  
0 5 10 20  
SCALE: 1" = 10'

C2.0 REVISION 1 C2.0 REVISION 1



PROPOSED SITE ENTRANCE

GRAPHIC SCALE SUPERSEDES NUMERIC SCALE  
0 2.5' 5' 10'  
SCALE: 1" = 5'

C2.0 REVISION 1 C2.0 REVISION 1

KEYNOTES

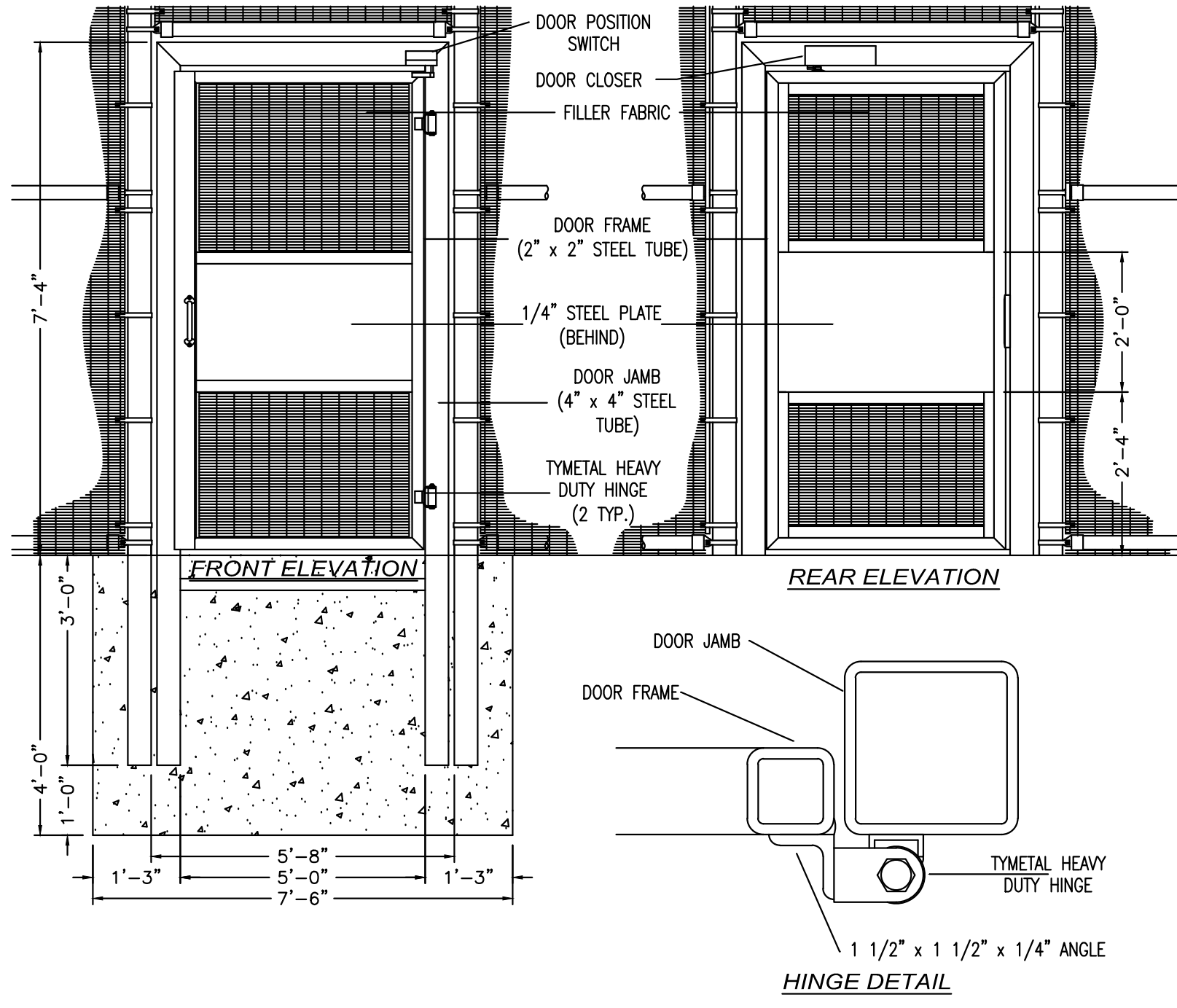
- EXISTING CONCRETE PAVING TO REMAIN.
- EXISTING CONCRETE RETAINING WALL TO REMAIN.
- EXISTING CONCRETE CURB TO REMAIN.
- EXISTING MANHOLE TO REMAIN.
- EXISTING INLET TO REMAIN.
- EXISTING ELECTRICAL BOX TO REMAIN.
- EXISTING TRANSFORMER ON CONCRETE PAD TO REMAIN.
- NEW PERMANENT BOLLARDS
- NEW POWDER COATED GUARDRAIL - HOLD TIGHT TO VARICLAVE ENCLOSURE TO AVOID CONFLICT WITH TRUCK TRAFFIC AND ACCESS TO DOCK DOORS. GUARD RAIL SHALL BE MOUNTED ON SPRING POSTS AND ENDS SHALL BE PROVIDED WITH PLASTIC END CAPS. BASIS OF DESIGN (POSTS); VESTIL INDUSTRIES, MODEL GR-SP.
- HOLD BOLLARDS TIGHT TO NEW GATE MECHANISM TO PREVENT CONFLICT WITH TRUCK TRAFFIC. BOLLARD LOCATION SHALL NOT INTERFERE WITH MAINTENANCE ACCESS OF GATE MECHANISM.
- SEE DETAILS ON THIS SHEET FOR PEDESTRIAN GATE REQUIREMENTS. BASIS OF DESIGN:

NOTES:

- CONTRACTOR IS RESPONSIBLE FOR ALL SHORING AND SHALL SUBMIT PLANS FOR REVIEW PRIOR TO EXCAVATING AROUND PROPOSED WORK AREAS.
- CONTRACTOR SHALL INCLUDE THE SERVICES OF AN UNDERGROUND UTILITY LOCATION COMPANY TO IDENTIFY ALL UTILITIES IN THE PROPOSED WORK AREA.
- CONTRACTOR SHALL FURNISH AND INSTALL NEW AIR-TIGHT COVERS FOR ALL SANITARY SEWER AND STORM SEWER OPENINGS WITHIN THE BUILDING FOOTPRINT.

EXISTING SITE CONDITION NOTES:

- THE EXISTING CONDITIONS SHOWN ON THIS PLAN WERE PROVIDED BY A SITE TOPOGRAPHIC SURVEY DATED 28 OCTOBER 2010 PROVIDED BY GAI CONSULTANTS LOCATED AT 385 E WATERFRONT DR., HOMESTEAD, PA 15120-5005, 412.476.2000.
- ALL UTILITIES SHOWN ARE APPROXIMATE. INDIVIDUAL SERVICE LINES ARE NOT SHOWN. WHERE EXISTING CONDITIONS DIFFER FROM SITE PLAN CONTRACTOR SHALL NOTIFY THE VA COTR.
- CONTRACTOR IS RESPONSIBLE TO CONTACT ALL LOCAL UTILITY PROVIDERS TO VERIFY THE LOCATION OF ALL EXISTING UTILITIES BEFORE WORK BEGINS. IF EXISTING CONDITIONS DIFFER FROM THIS DRAWING CONTRACTOR SHALL NOTIFY THE VA COTR.



PEDESTRIAN GATE DETAIL

NTS C2.0 REVISION 1 C2.0 REVISION 1

FULLY SPRINKLERED BUILDING  
BID DOCUMENTS

REVISIONS		DATE
1	CONTRACTOR TO PROVIDE GUARD HOUSE	08.30.12
2		
3		
4		
5		
6		
7		
8		
9		
10		

PARADIGM  
ENGINEERS AND CONSTRUCTORS  
PO BOX 438223  
Louisville, Kentucky 40253  
502-339-8511 www.paradigmusa.com

UPGRADE SPD AND SECURITY DOCK  
PROJECT: 646-367  
VA PITTSBURGH  
HEALTHCARE SYSTEM  
UNIVERSITY DRIVE C  
PITTSBURGH, PENNSYLVANIA 15240

Department of  
Veterans Affairs

MADE BY	CHECKED
DATE	7-28-11
NEW SITE WORK	
DRAWING NO.	BID PKG.
C2.0	

REVISION