

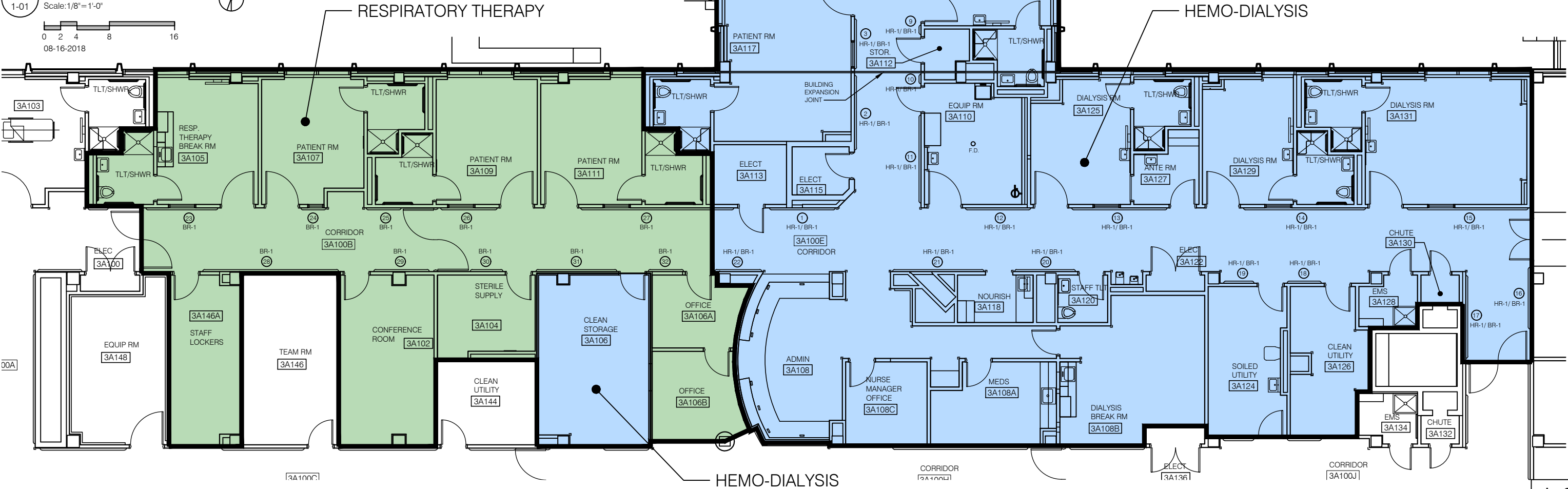
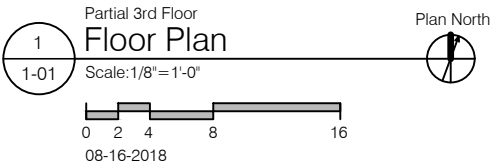
Legend (basis of design/ or equal)

- Respiratory Therapy
- Hemo-Dialysis

⊗ Lineal Wall Length at Handrail (HR-1) and Bumper Guard (BR-1) Locations

HR-1  
Material: Rigid Vinyl Handrail with Stainless Steel Wall Guard (50SS)  
Manuf: inpro  
Style: 3510 VS  
Color: Vinyl: Coffee Bean-0546  
Notes: Return ends to wall for handrail and wall guard

BR-1  
Material: Stainless Steel Bumper Guard  
Manuf: inpro  
Style: 56SS  
Notes: Return ends to wall



RESPIRATORY THERAPY

| No:          | Wall Length             |
|--------------|-------------------------|
| 23           | 9'-1"                   |
| 24           | 3'-1"                   |
| 25           | 5'-6" (Not Behind Door) |
| 26           | 7'-1"                   |
| 27           | 19'-4"                  |
| 28           | 17'-6"                  |
| 29           | 7'-8"                   |
| 30           | 4'-8" (Not Behind Door) |
| 31           | 9'-10"                  |
| 32           | 5'-4"                   |
| 86'-1" Total |                         |

HEMO-DIALYSIS

| No:           | Wall Length | No: | Wall Length              |
|---------------|-------------|-----|--------------------------|
| 1             | 10'-2"      | 12  | 8'-5"                    |
| 2             | 10'-1"      | 13  | 12'-2"                   |
| 3             | 6'-4"       | 14  | 15'-9"                   |
| 4             | 3'-1"       | 15  | 15'-0"                   |
| 5             | 2'-10"      | 16  | 8'-11" (Not Behind Door) |
| 6             | 14'-2"      | 17  | 10'-10"                  |
| 7             | 8'-0"       | 18  | 5'-0"                    |
| 8             | 23'-9"      | 19  | 4'-3"                    |
| 9             | 1'-10"      | 20  | 7'-10"                   |
| 10            | 2'-0"       | 21  | 11'-6"                   |
| 11            | 10'-10"     | 22  | 5'-9"                    |
| 198'-6" Total |             |     |                          |