

A

B

C

D

E

F

three inches = one foot

one and one half inches = one foot

one inch = one foot

three quarters inch = one foot

one half inch = one foot

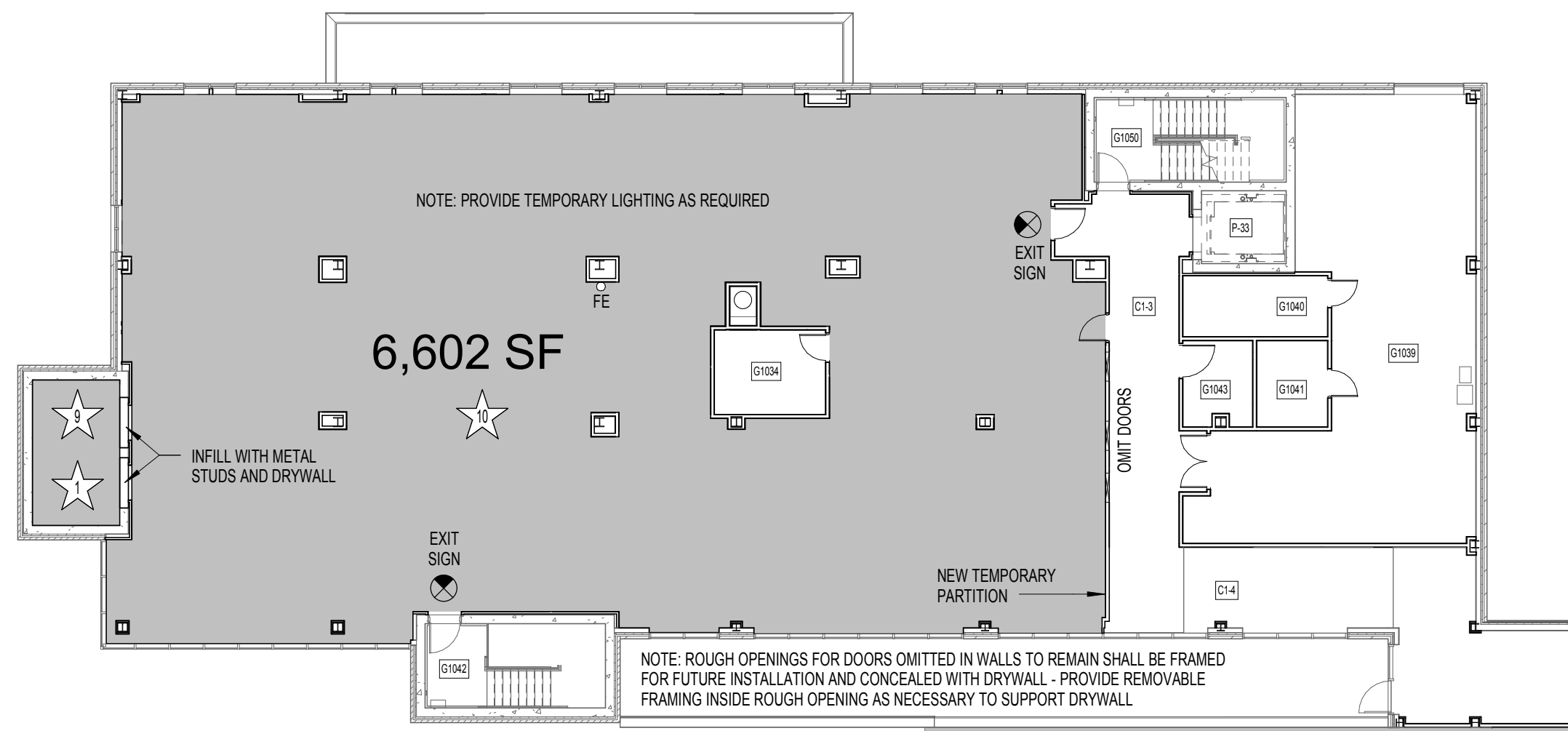
three eighths inch = one foot

one quarter inch = one foot

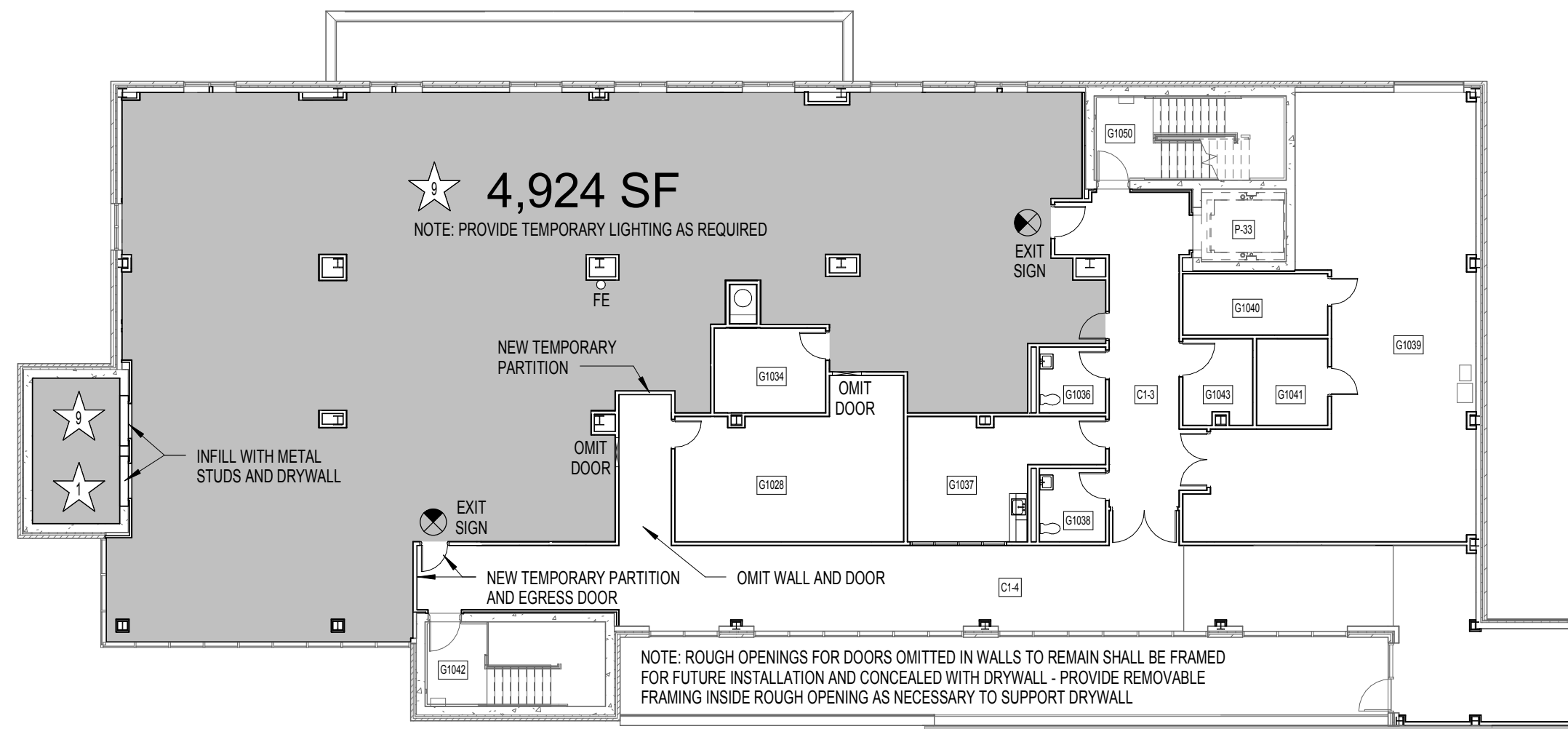
one eighth inch = one foot

★ALTERNATE NOTES

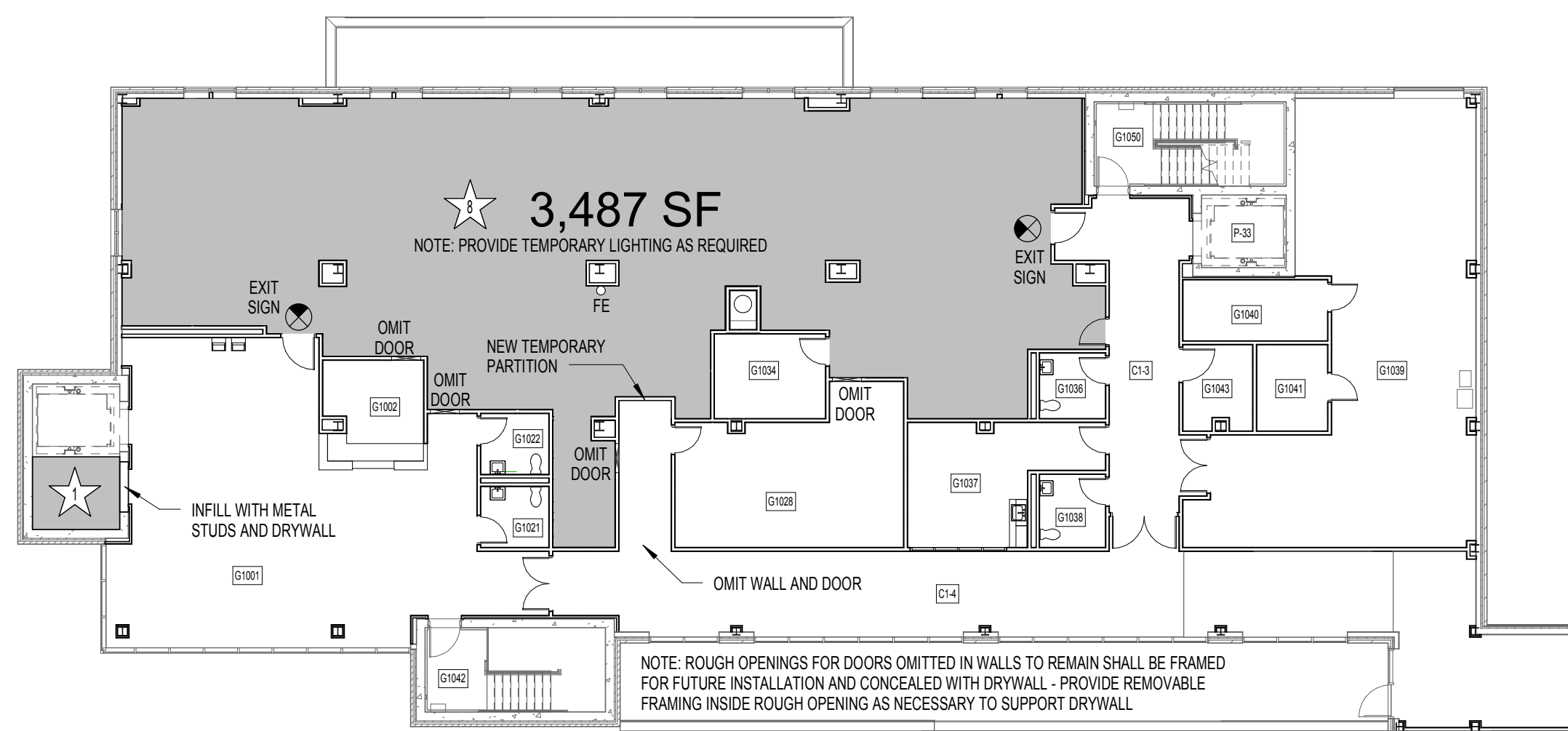
1. OMIT ELEVATOR P-31. INFILL DOORS ON BOTH LEVELS W/ SHAFTWALL. SEE WALL TYPE 54.2 ON G104.
2. OMIT SUNDOLIER DAYLIGHT HARVESTER. OPENING IN CONCRETE FLOORS, SHAFTWALL AND CEILING FIXTURE TO REMAIN IN CONTRACT.
3. REPLACE 60 MIL KEE ROOFING MEMBRANE WITH 36 MIL KEE ROOFING MEMBRANE.
4. OMIT ROOF GARDEN SYSTEM. LANDSCAPING AT ROOF GARDEN AND GUARDRAIL SURROUNDING ROOF GARDEN. OMIT TRELLIS ON EXISTING MRI WALL. REMOVE PAVING AT ROOF GARDEN. ROOFING MEMBRANE, INSULATION AND LIQUID WATERPROOFING BELOW ROOF GARDEN TO REMAIN IN CONTRACT.
5. OMIT SITE WALLS. ALUMINUM GATES, TRANSLUCENT PANELS AND LANDSCAPING NEAR LOUNGES/ROLLING BAYS. REPLACE SITE WALLS WITH RETAINING WALL SHOWN. SEE SHEETS AE513 AND AE514.
6. OMIT VEHICULAR ENTRANCE CANOPY. REPLACE WITH PEDESTRIAN ENTRANCE CANOPY. SEE SHEET AE512. REPLACE VESTIBULE STOREFRONT WITH STOREFRONT INDICATED. OMIT SUPPORTING CAST-IN-PLACE COLUMNS AND METAL STRUCTURE AND REPLACE WITH STRUCTURE FOR PEDESTRIAN ENTRANCE CANOPY. SEE SHEET S-601.
7. OMIT AREA INDICATED. AREA TO BE UNFINISHED SPACE. INCLUDE GYPSUM BOARD AND VAPOR BARRIER ON EXTERIOR WALLS.
8. OMIT AREA INDICATED. AREA TO BE UNFINISHED SPACE. INCLUDE GYPSUM BOARD AND VAPOR BARRIER ON EXTERIOR WALLS.
9. OMIT AREA INDICATED AND ELEVATOR P-30. INFILL DOORS ON BOTH LEVELS W/ SHAFTWALL. AREA TO BE UNFINISHED SPACE. INCLUDE GYPSUM BOARD AND VAPOR BARRIER ON EXTERIOR WALLS.
10. OMIT AREA INDICATED. AREA TO BE UNFINISHED SPACE. INCLUDE GYPSUM BOARD AND VAPOR BARRIER ON EXTERIOR WALLS.



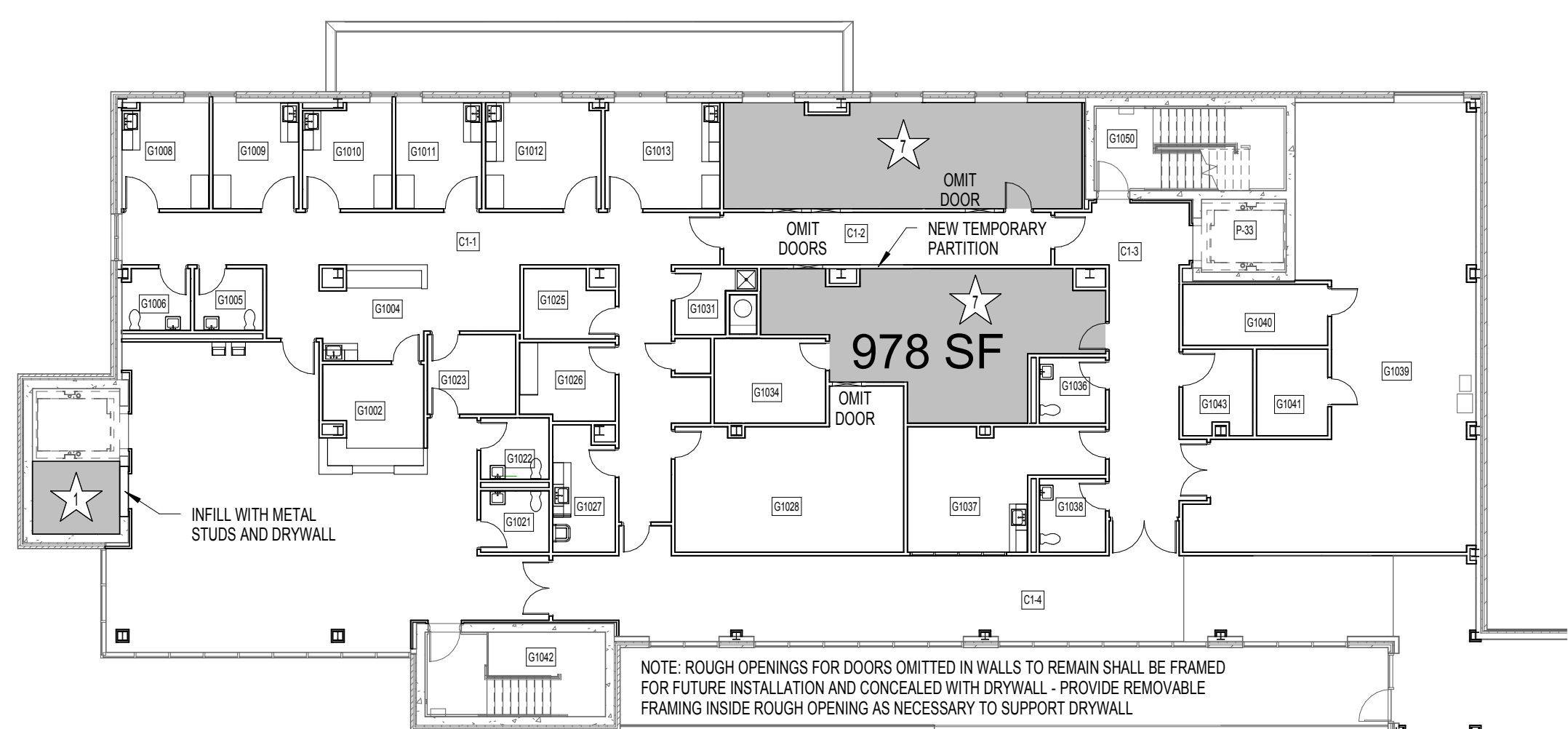
4 LEVEL 1 - DEDUCT 10
SCALE: 1/16" = 1'-0"



3 LEVEL 1 - DEDUCT 9
SCALE: 1/16" = 1'-0"

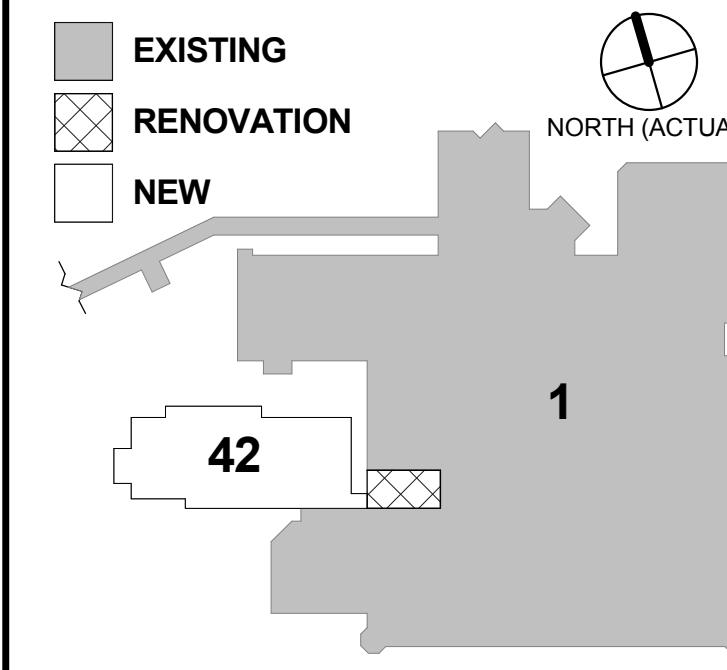


2 LEVEL 1 - DEDUCT 8
SCALE: 1/16" = 1'-0"



1 LEVEL 1 - DEDUCT 7
SCALE: 1/16" = 1'-0"

KEY PLAN



FULLY SPRINKLERED
FINAL CONSTRUCTION DOCUMENTS

| | | | | | | | | | | | | | |
|-----------|--|---|--|---|--|--|-----------------------|---|--|--|---|-----------------------------------|--|
| | | CONSULTANTS: | | PROJECT MANAGER: | | Project Number 13-290 | Scale As indicated | Drawing Title: LEVEL 1 - BID ITEMS | Project Title VA Durham Specialty Care Building 42 | Project Number 558-321 | Office of Construction and Facilities Management | | |
| | |  5960 Fairview Road, Suite 500 Charlotte, NC 28210 704-887-3500 | |  111 West Main Street Durham, NC 27701 704-887-0368 | |  P. O. Box 51967 Durham, NC 27717 919-489-0926 | |  3516 Bush Street, Suite 200 Raleigh, NC 27609 919-871-1070 | |  Raleigh, NC Indianapolis, IN Philadelphia, PA Pittsburgh, PA Virginia Beach, VA Fort Collins, CO (919) 858-7420 | | Department of Veterans Affairs | |
| Revisions | | Date | | | | | | Approved: Project Director | Location Durham, North Carolina | Building Number 42 | Dwg. 48 of 60 | | |
| | | | | | | | | | Date 04/28/2015 | Checked MBT | A1108 | | |
| | | | | | | | | | Drawn MBT | | | | |