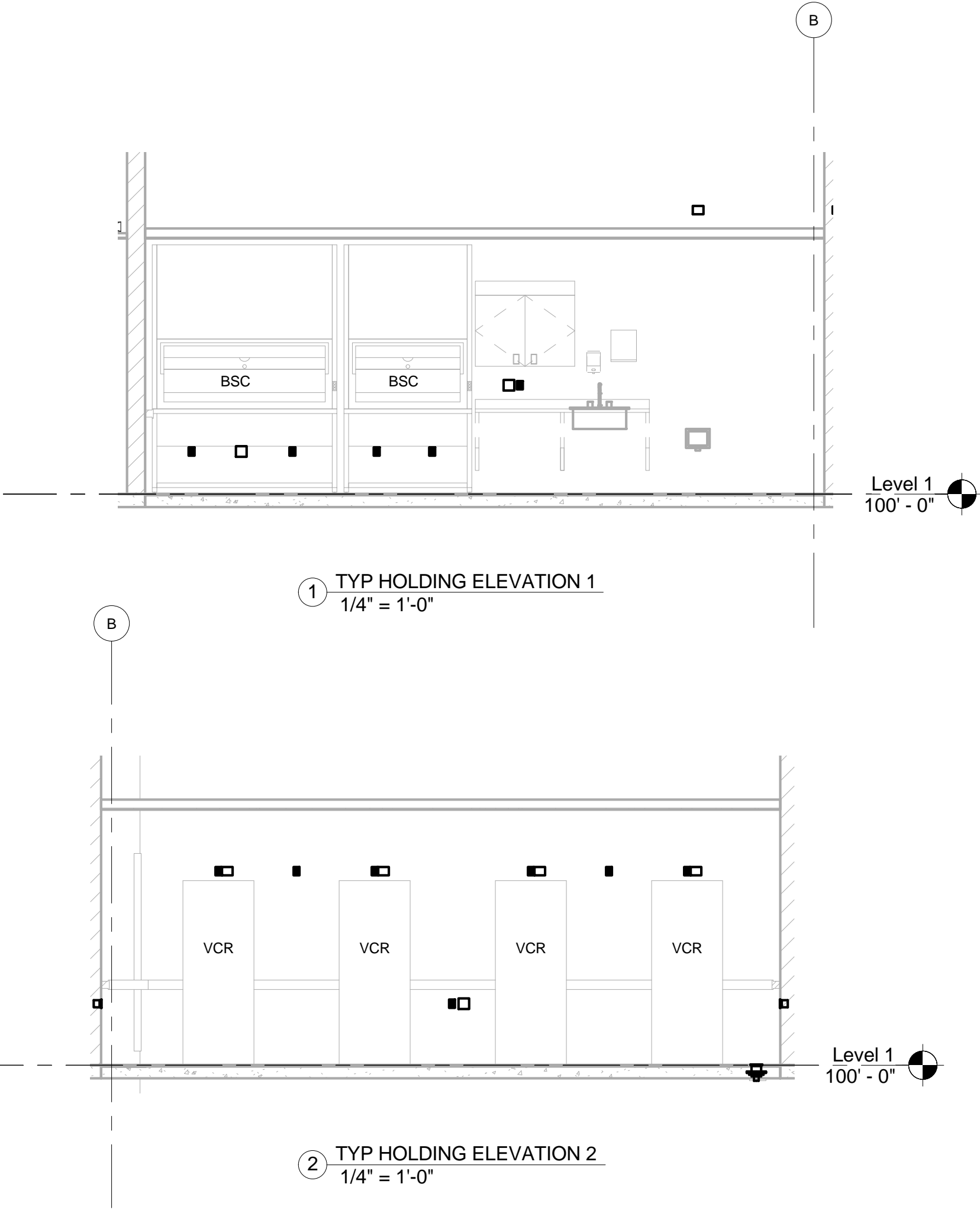
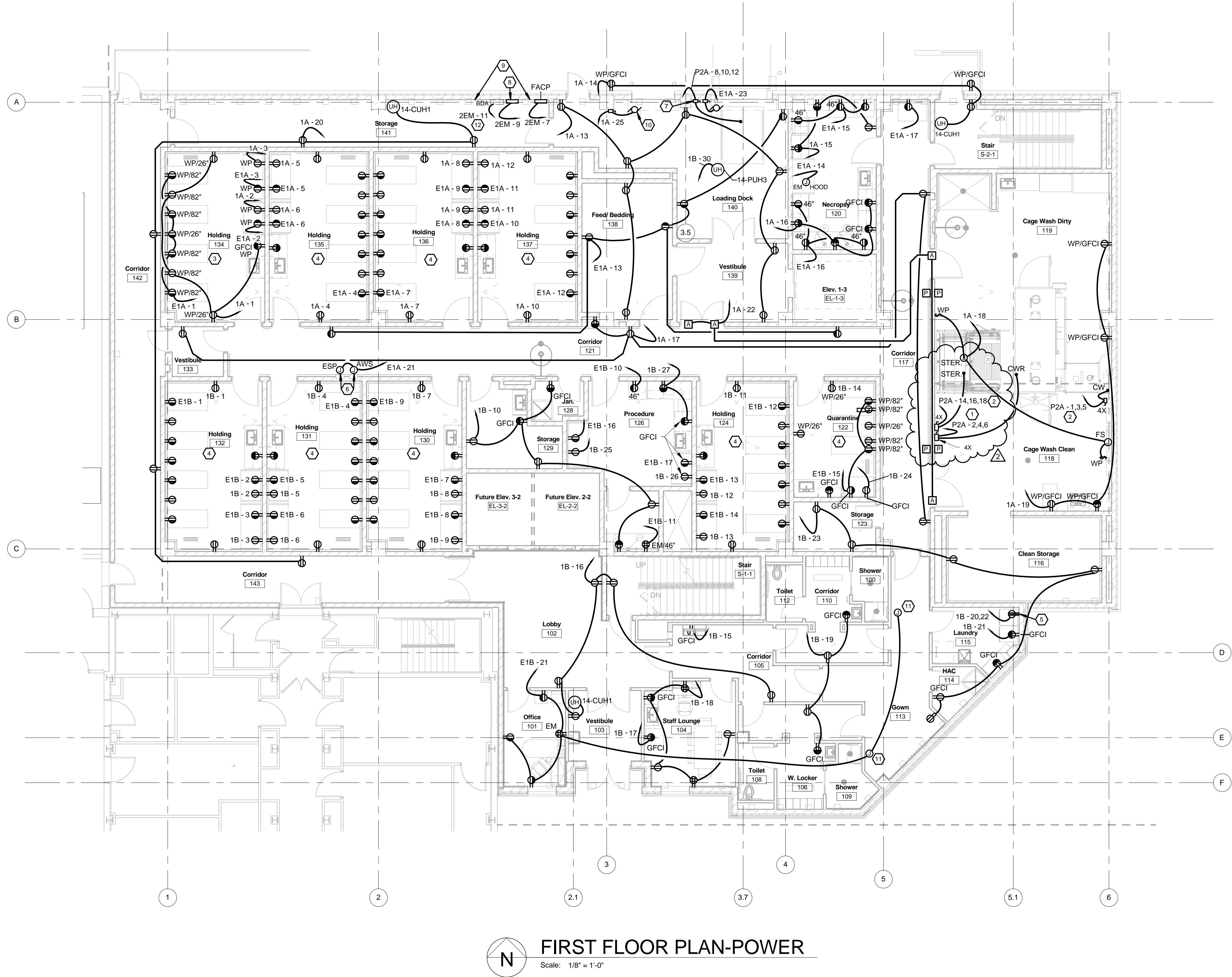


GENERAL NOTES

- A REFER TO ARCHITECTURAL PHASING PLAN AND INCLUDE ALL WORK NECESSARY TO ACCOMMODATE PHASING.
- B COORDINATE ALL WIRING DEVICES WITH ARCHITECTURAL ELEVATIONS.
- C (1) EACH BRANCH CIRCUIT HOMERUN SHALL HAVE NO MORE THAN THREE CIRCUITS. EACH BRANCH CIRCUIT HOMERUN SHALL HAVE A SEPARATE NEUTRAL AND (SHARED) GREEN INSULATED EQUIPMENT GROUNDING CONDUCTOR.
- D MULTI-GANG BACKBOXES FOR DIFFERENT VOLTAGES AND TYPES OF EMERGENCY AND NORMAL BRANCH WIRING DEVICES SHALL HAVE DIVIDERS BETWEEN DEVICES.
- E REFER TO ARCHITECTURAL DRAWINGS FOR INFORMATION ON SMOKE COMPARTMENTS, SMOKE PARTITIONS AND FIRE BARRIERS.
- F REFER TO ARCHITECTURAL DRAWINGS FOR LOCATIONS OF FIRE RATED WALL ASSEMBLIES. ALL PENETRATIONS THROUGH FIRE RATED ASSEMBLIES SHALL BE PROTECTED AND/OR FIRE STOPPED AS REQUIRED TO MAINTAIN FIRE RATING AS INDICATED.

NOTES

- 1 RUN 3-#6, 1-#10 GRD. IN 0.75°C.
- 2 RUN 3-#12, 1-#12 GRD. IN 0.75°C.
- 3 WIRING, RECEPTACLE TYPES AND MOUNTING HEIGHTS WITHIN THIS ROOM ARE TYPICAL OF OTHERS.
- 4 REFER TO HOLDING 134 FOR TYPICAL WIRING, RECEPTACLE TYPES AND MOUNTING HEIGHTS.
- 5 PROVIDE 250V-30A RECEPTACLE FOR RESIDENTIAL DRYER. RUN 3-#10, 1-#10 GRD. IN 0.75°C.
- 6 PROVIDE 120V ROUGH-IN TO FUTURE AUTOMATIC WATERING SYSTEM/ENVIRONMENTAL MONITORING SYSTEM CONTROL PANELS.
- 7 PROVIDE 480V-30A/3P FUSIBLE DISCONNECT SWITCH (FUSED AT 6 AMPS) FOR DOCK LIFT. COORDINATE EXACT REQUIREMENTS WITH SUPPLIER.
- 8 PROVIDE 120V CONNECTION TO AREA OF RESCUE MASTER STATION POWER SUPPLY.
- 9 FUTURE LOCATION FOR GENERATOR REMOTE ANNUNCIATOR, ATS POSITION ANNUNCIATOR, ELEVATOR ANNUNCIATOR, STAIR PRESSURIZATION CONTROL PANEL, DOOR CONTROL (UNLOCKING) PANEL, FIRE PUMP ANNUNCIATOR, ETC. FOR FUTURE FIRE COMMAND CENTER.
- 10 PROVIDE CONNECTION TO OVERHEAD COILING DOOR. ROUGH IN BACKBOX AND 1" FOR DOOR CONTROLS. COORDINATE EXACT LOCATION WITH COTR.
- 11 CONNECT TO L.V. TRANSFORMER ABOVE CEILING BY DIV. 22. PROVIDE 0.75°C. DOWN TO EACH LAVATORY FOR L.V. WIRING BY DIV. 22. COORDINATE CLOSELY WITH DIV. 22 CONTRACTOR PRIOR TO ROUGH-IN.
- 12 PROVIDE 120V CIRCUIT ROUGH-IN FOR FUTURE BI-DIRECTIONAL AMPLIFIER SYSTEM FOR FIRE DEPARTMENT MOBILE COMMUNICATIONS.

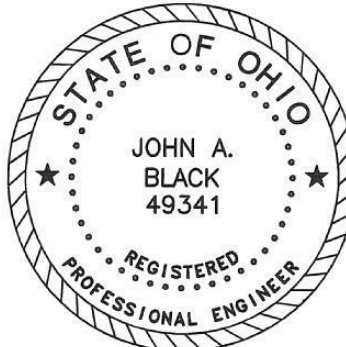


FIRST FLOOR PLAN-POWER

Scale: 1/8" = 1'-0"

CONSULTANTS:

Heapy Engineering
Mechanical Electrical Commissioning Technology
Nationally Recognized Leader in Sustainability / LEED
1400 W Dorothy Lane, Dayton OH 45409-1310
Ph: 937-224-0861 Fax: 937-224-5777 www.heapy.com
HEAPY PROJECT No.: 2010-04004 FIRM LICENSE: 05128



ARCHITECT/ENGINEERS:

JOHN POE ARCHITECTS

116 EAST THIRD STREET
DAYTON, OHIO
45402-2130
937 461 3290 PHONE
937 461 0280 FAX
jpo@johnpoe.com

Drawing Title

FIRST FLOOR PLAN-POWER

Approved: Project Director

Project Title

BUILDING 14
ANIMAL RESEARCH FACILITY -
BLDG 14

Location

Cincinnati, Ohio

Date

09/29/2011
REVISED AUGUST 17, 2012

Checked

MSG

Drawn

MSG

Project No.

VA Project No. 539-317
JPA Project No. 10005.00

Building Number

14

Drawing Number

14-E5

Dwg. of

Office of
Construction
and Facilities
Management

