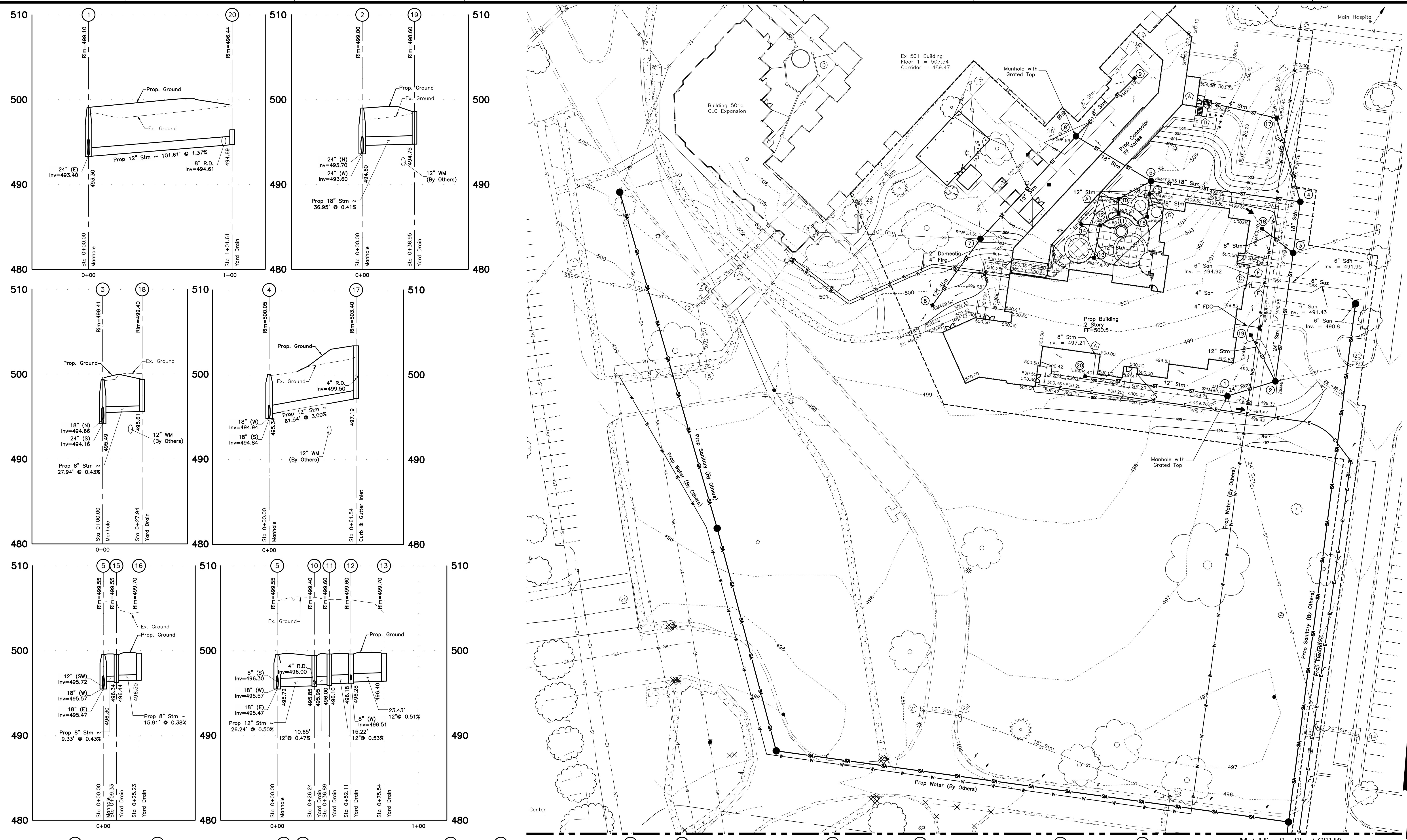


one and one half inches = one foot
three quarters inch = one foot
one half inch = one foot
one quarter inch = one foot
one eighth inch = one foot



LEGEND
Existing
Sanitary Sewer
Storm Sewer
Water Main
Electric
Fire Hydrant
Water Valves
Electric Pull Box
Electric Outlet
Electric Pedestal Box
Wooden Light Pole
Metal Light Pole
Mailbox
Fence Post
Sign
Trees
Bushes
Contours
Structure Number
Proposed
Contours
Spot Elevation
Limits of Disturbance (1.91 Acres)
Storm Structure Number
Water Line
Water Valve
Fire Department Connection
Storm Line
Storm Manhole
Storm Catch Basin
Storm Yard Inlet
Sanitary Service
Sanitary Main (By Others)
Sanitary Manhole (By Others)
Electric Line
Electric Manhole
Gas Line
Key Notes
Roof Drain Connection Location (Sitework limits to 5' outside building)
Rainwater Collection System Roof Drainage Connection Location
Sanitary Sewer Connection Location (Sitework limits to 5' outside building)
Fuel Oil Tank
Contractor to Verify As-Built Water Elevations and ensure 24" clearance to sanitary lateral
2.5' Sanitary Lateral Riser between Water Main and Proposed Building
Notes
Location of existing utilities indicated on these plans is approximate. Contractor shall verify location of all existing utilities prior to construction.
No blasting is allowed on-site.
See Detail C, CS104 for patching of existing pavement associated with proposed utility work.
See Specification 31.20.11 for backfill requirements with utility excavation.

GRAPHIC SCALE
0 15 30 60
1 inch = 30 feet

Matchline See Sheet CS110

SITE BID ALTERNATE LIST:

- BID ALTERNATE #1:**
ELIMINATE LOADING DOCK PAVING AND LOCATION OF THE REMOTE FUEL STORAGE TANK AND BOLLARDS AS SHOWN ON CS108. DUE TO REMOVAL OF LOADING DOCK PAVING THE LIMITS OF DEMOTION (CS105) AND PAVEMENT REPLACEMENT (CS108) ARE MODIFIED. SEE LP106FOR MODIFIED LANDSCAPE PLANTINGS.
- BID ALTERNATE #2:**
ELIMINATE TEMPORARY CONSTRUCTION ACCESS AND CONCRETE WALKS, STEPS, RAMPS, PLANTER WALLS, UNDERDRAINS, RAINWATER HARVESTING SYSTEM AND IRRIGATION IN COURTYARD AREA AS SHOWN ON SHEET LP105. SIDEWALK TO REMAIN INCLUDES WALK ON SOUTH AND EAST SIDES OF BUILDING AND PORTIONS EXITING THE NORTH SIDE OF THE ELEVATOR LOBBY AREA. SEE CS109A FOR CLARIFICATION OF ANY SIDEWALKS TO REMAIN IN CONTRACT. SEE LP105FOR ELIMINATION OF PLANTINGS.
- BID ALTERNATE #3:**
EXTEND LIMITS OF GRADING TO SINGLE WIDE CORRIDOR (SEE ARCHITECTURAL DRAWINGS FOR LIMITS OF SINGLE WIDE CORRIDOR).
- BID ALTERNATE #4:**
DELETE CONNECTING CORRIDOR, ADD RETAINING WALL AND PEDESTRIAN WALK BRIDGE (SEE STRUCTURAL PLANS FOR DETAILS OF RETAINING WALL AND BRIDGE). ADD 6' WIDE WALK CONNECTION FROM 501 BUILDING TO PROPOSED DEMENTIA BUILDING, REDUCE LIMITS OF UPPER COURTYARD CONCRETE INSTALLATION. FOR GRADING MODIFICATIONS AND CLARIFICATION OF SCOPE, SEE CS109A. INSTALL LOW VOLTAGE DUCT BANK PER MECHANICAL PLANS.

**BID DOCUMENTS
FULLY SPRINKLERED**

Revisions:		Date:	
CONSULTANTS:		ARCHITECT/ENGINEERS:	
 Evans, Mechwart, Hamilton & Tron, Inc. Engineers • Surveyors • Planners • Scientists 3600 New Albany Road, Columbus, OH 43204 Phone: 614.775.4500 • Fax: 614.775.3448 emht.com		 C.C. HODGSON ARCHITECTURAL GROUP, P.C.	
Drawing Title: PROPOSED GRADING AND UTILITY PLAN		Project Title: RELOCATE DEMENTIA UNIT	
Approved: Project Director		Location: VAMC MARTINSBURG	
		Date: 8/6/2012	
		Checked: JAM	
		Drawn: SBO	
		Project Number: VA PN 613-207	
		Building Number: 513	
		Drawing Number: CS109	
		Dwg. 9 of 17	
		Office of Construction and Facilities Management Department of Veterans Affairs	