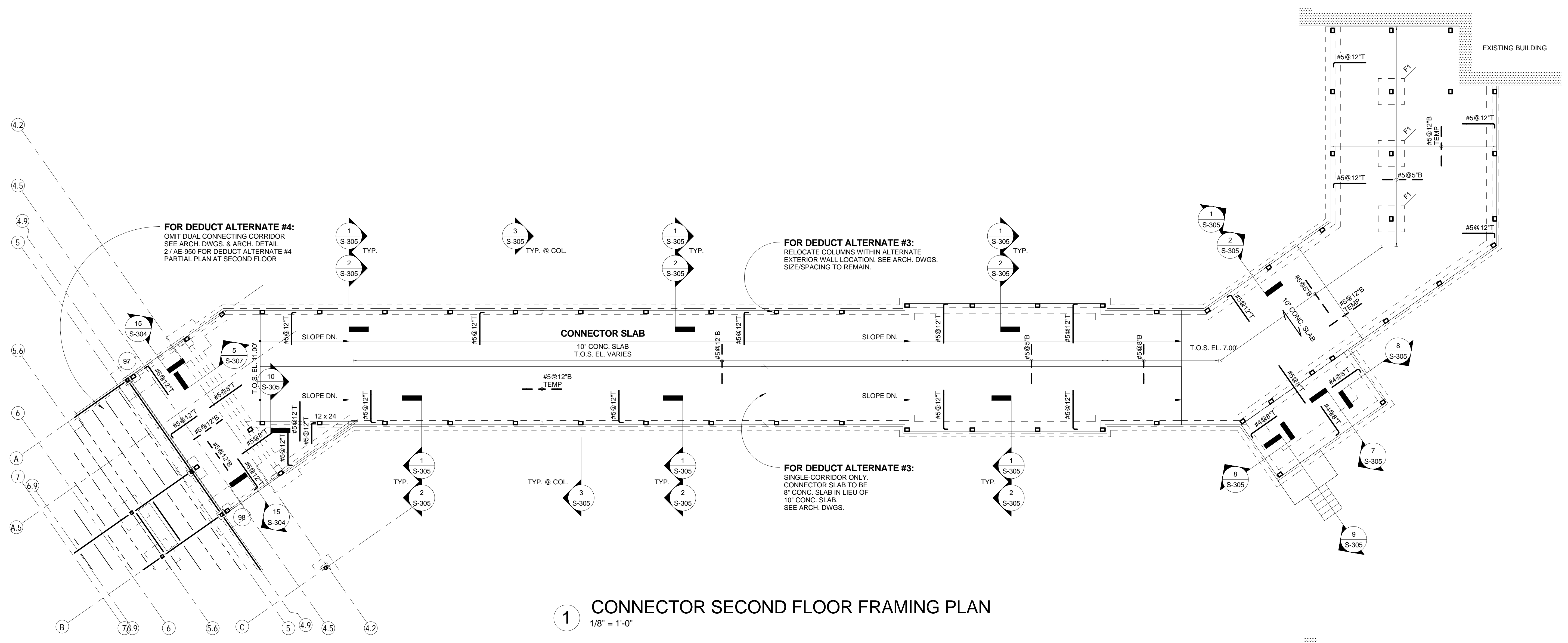
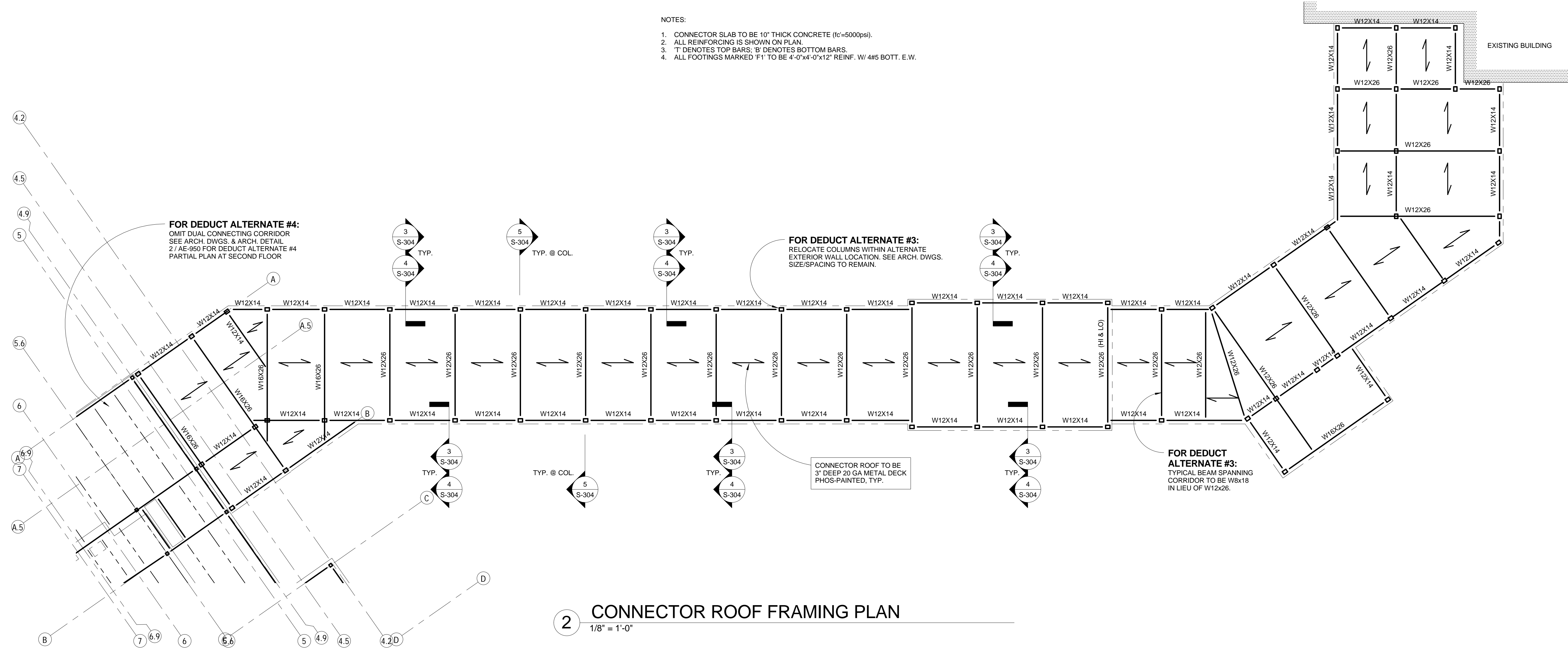


one and one half inches = one foot  
one inch = one foot  
three quarters inch = one foot  
one half inch = one foot  
one quarter inch = one foot  
one eighth inch = one foot



1 CONNECTOR SECOND FLOOR FRAMING PLAN  
1/8" = 1'-0"

- NOTES:
1. CONNECTOR SLAB TO BE 10" THICK CONCRETE (f'<sub>c</sub>=5000psi).
  2. ALL REINFORCING IS SHOWN ON PLAN.
  3. T DENOTES TOP BARS; S DENOTES BOTTOM BARS.
  4. ALL FOOTINGS MARKED 'F1' TO BE 4'-0"x4'-0"x12" REINF. W/ 4#5 BOTT. E.W.



2 CONNECTOR ROOF FRAMING PLAN  
1/8" = 1'-0"

BID DOCUMENTS  
FULLY SPRINKLERED

<b>CONSULTANTS:</b> Tadger-Cohen-Edelson Assoc. CONSULTING STRUCTURAL ENGINEERS 1109 Spring Street Suite #510 Silver Spring, MD 20910 T: (301) 587-1820 F: (301) 588-1966 www.tadgerco.com		<b>ARCHITECT/ENGINEERS:</b> C.C. HODGSON ARCHITECTURAL GROUP P.C.		<b>Project Title:</b> RELOCATE DEMENTIA UNIT		<b>Project Number:</b> VA PN 613-107	
<b>Revisions:</b>		<b>Approved:</b> Project Director		<b>Location:</b>		<b>Building Number:</b> 513	
<b>Date:</b>		<b>Date:</b> 8/6/2012		<b>Checked:</b> Checker		<b>Drawn:</b> Author	
						<b>Dwg. of</b>	

Office of Construction and Facilities Management

S-105