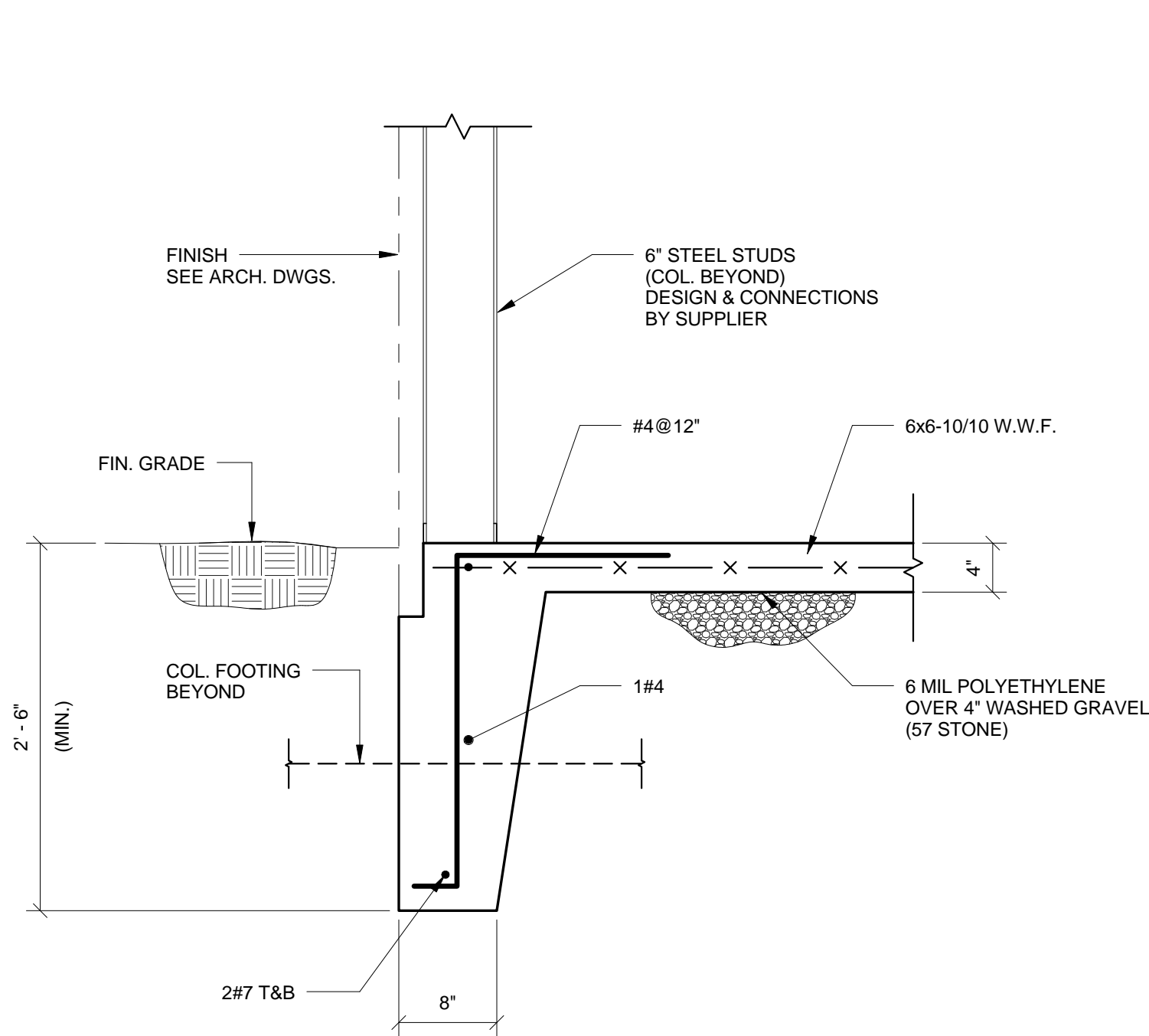
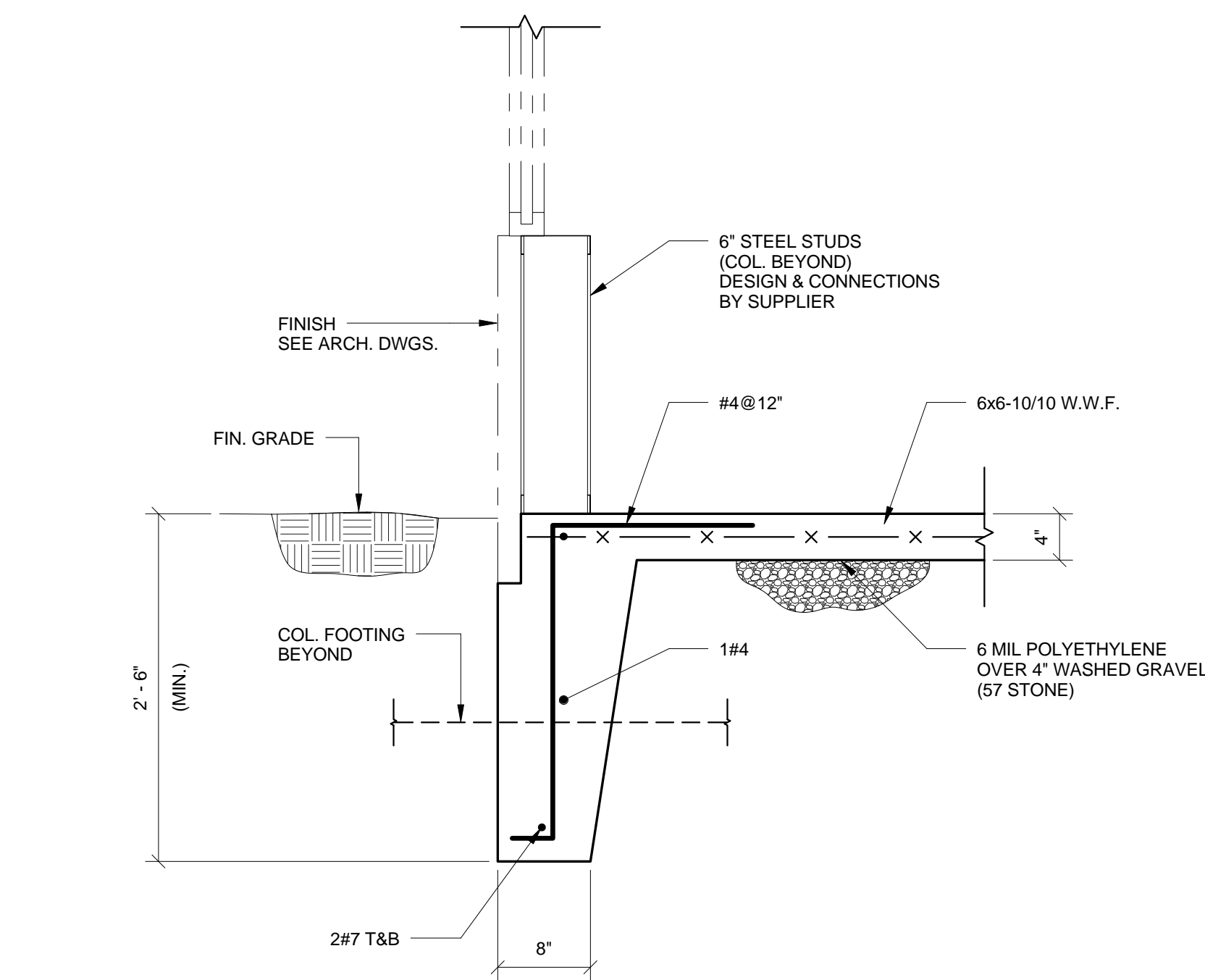


one and one half inches = one foot
one inch = one foot
three quarters inch = one foot
one half inch = one foot
one quarter inch = one foot
one eighth inch = one foot



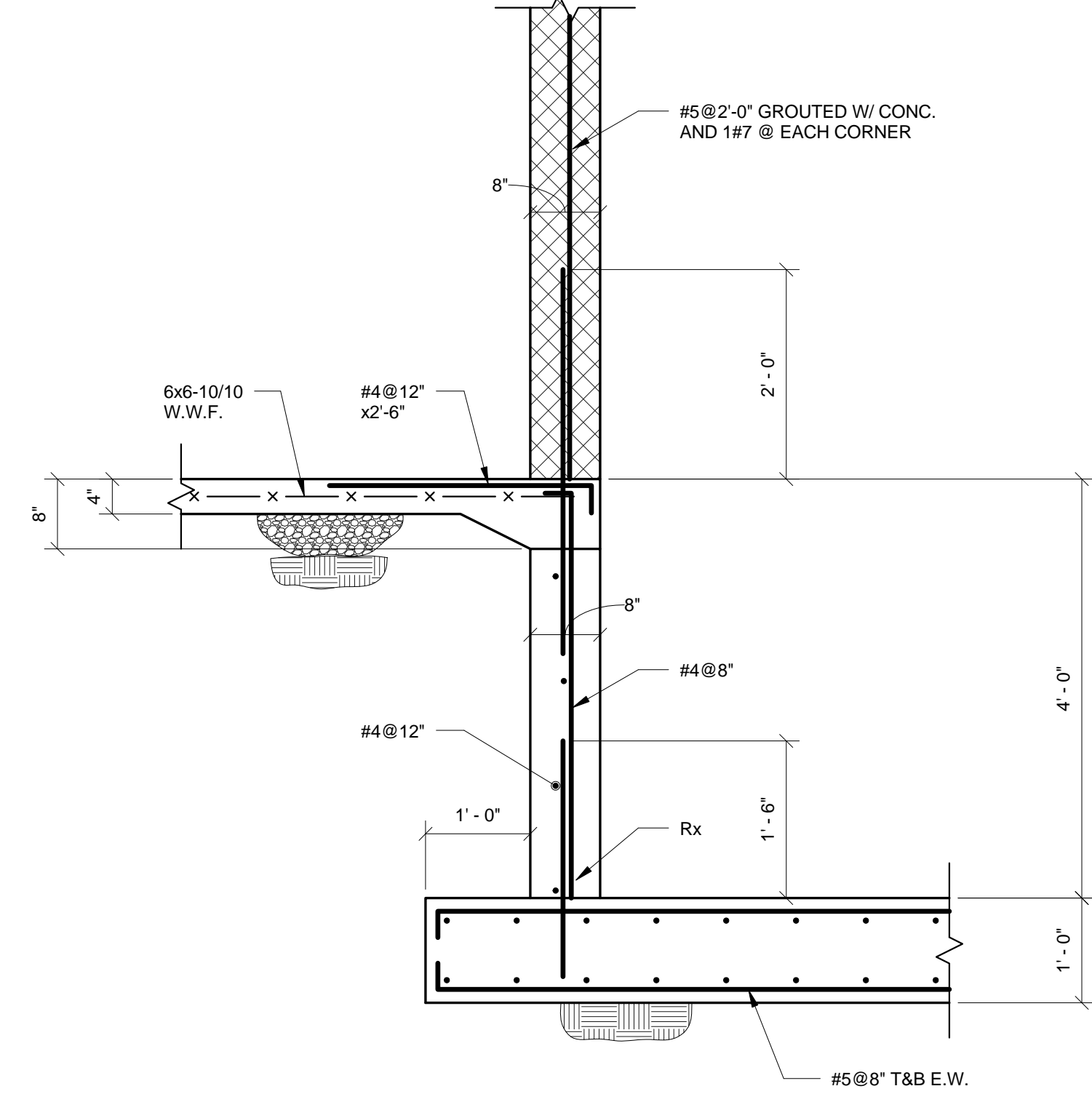
EXTERIOR FOOTING BETWEEN COLUMNS

1
1" = 1'-0"

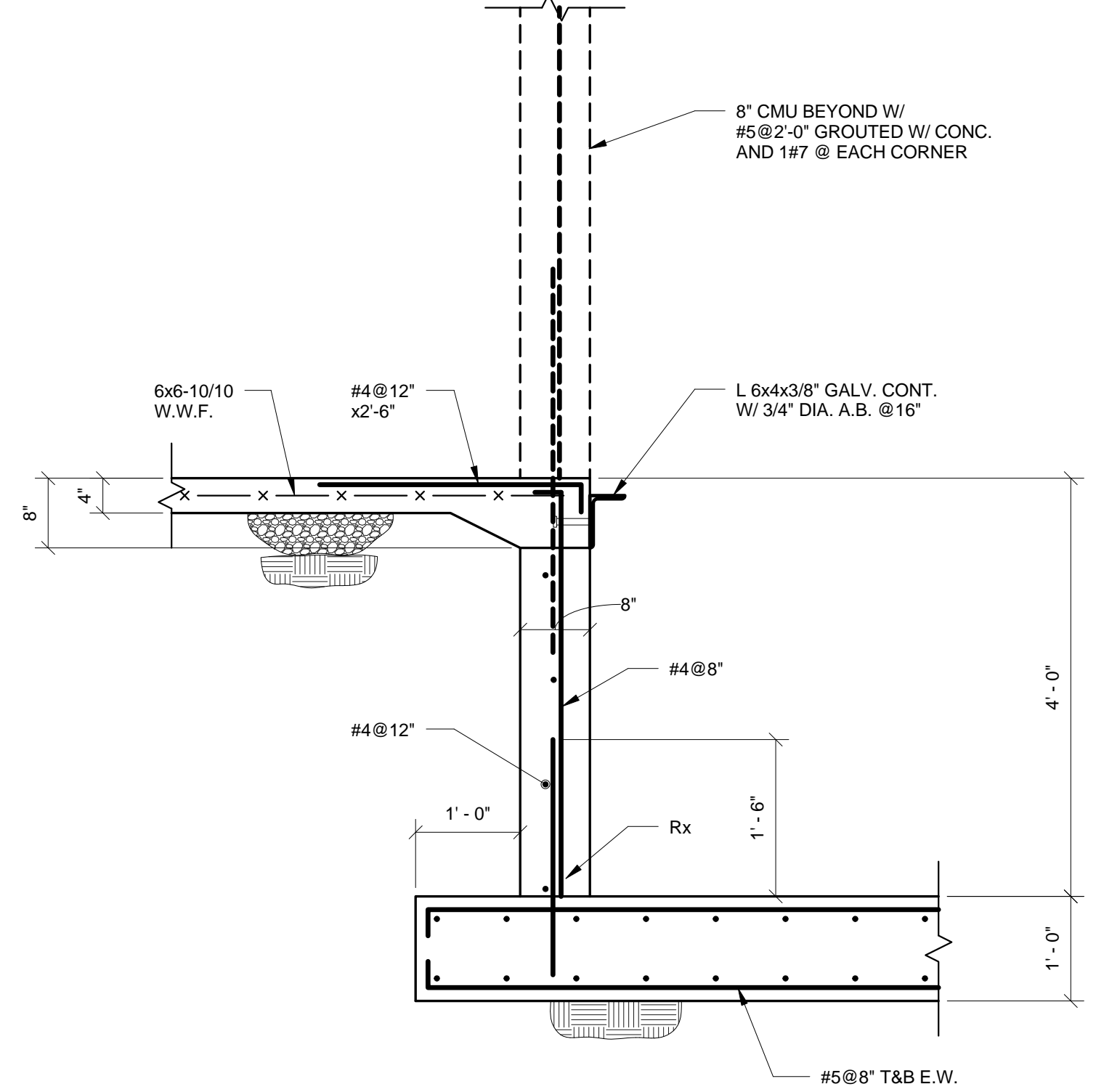


EXTERIOR FOOTING BETWEEN COLUMNS

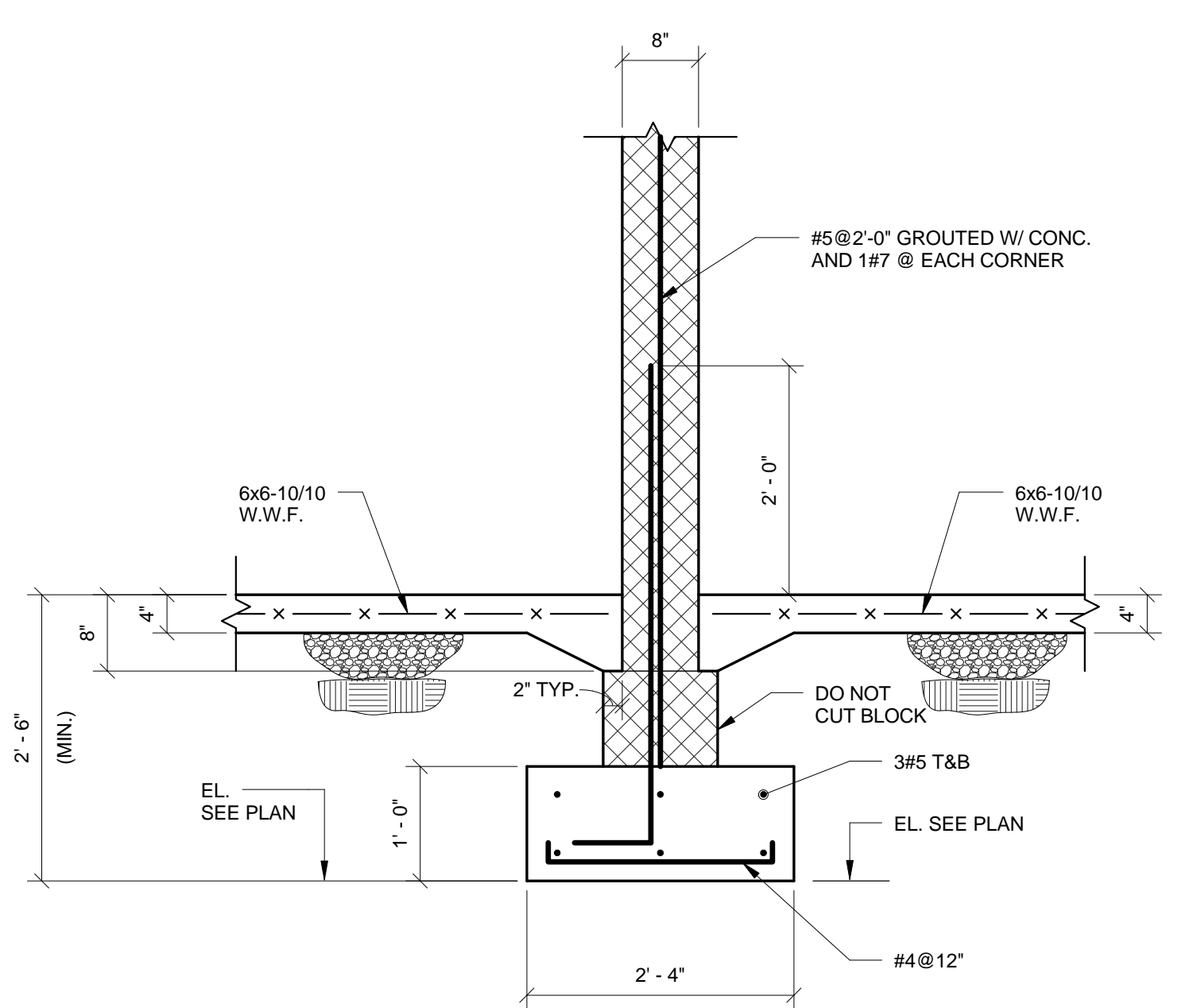
2
1" = 1'-0"



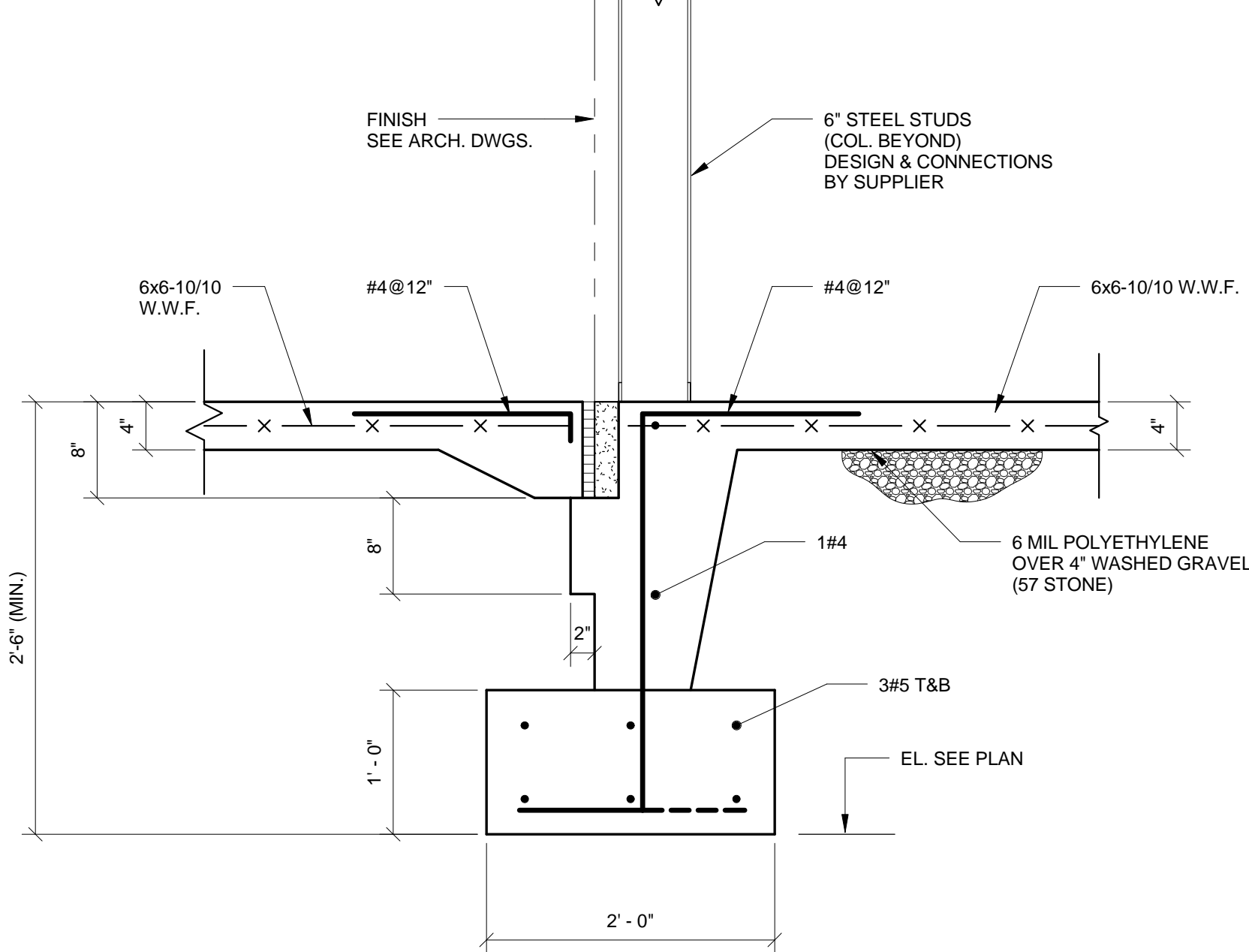
3
3/4" = 1'-0"



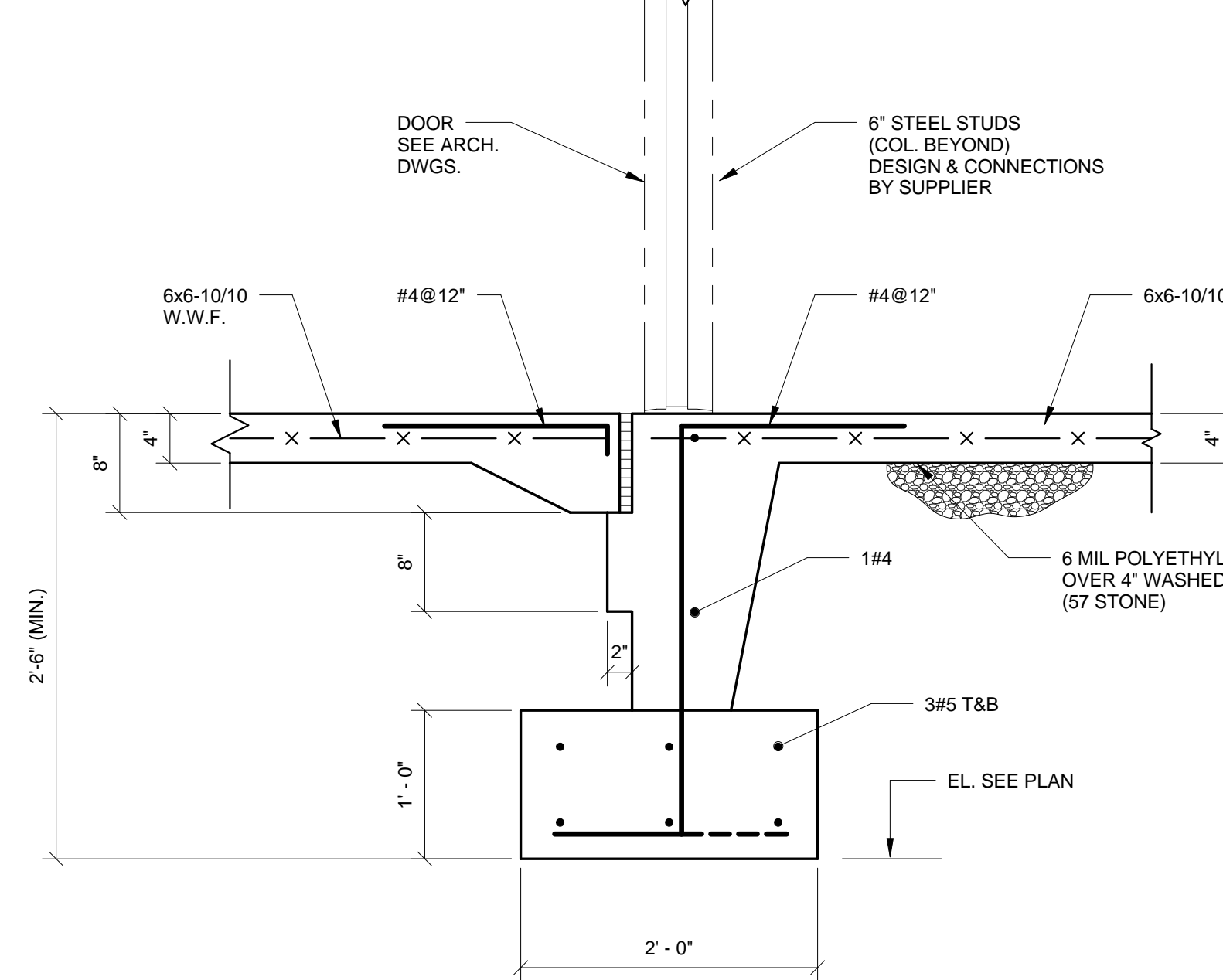
4
3/4" = 1'-0"



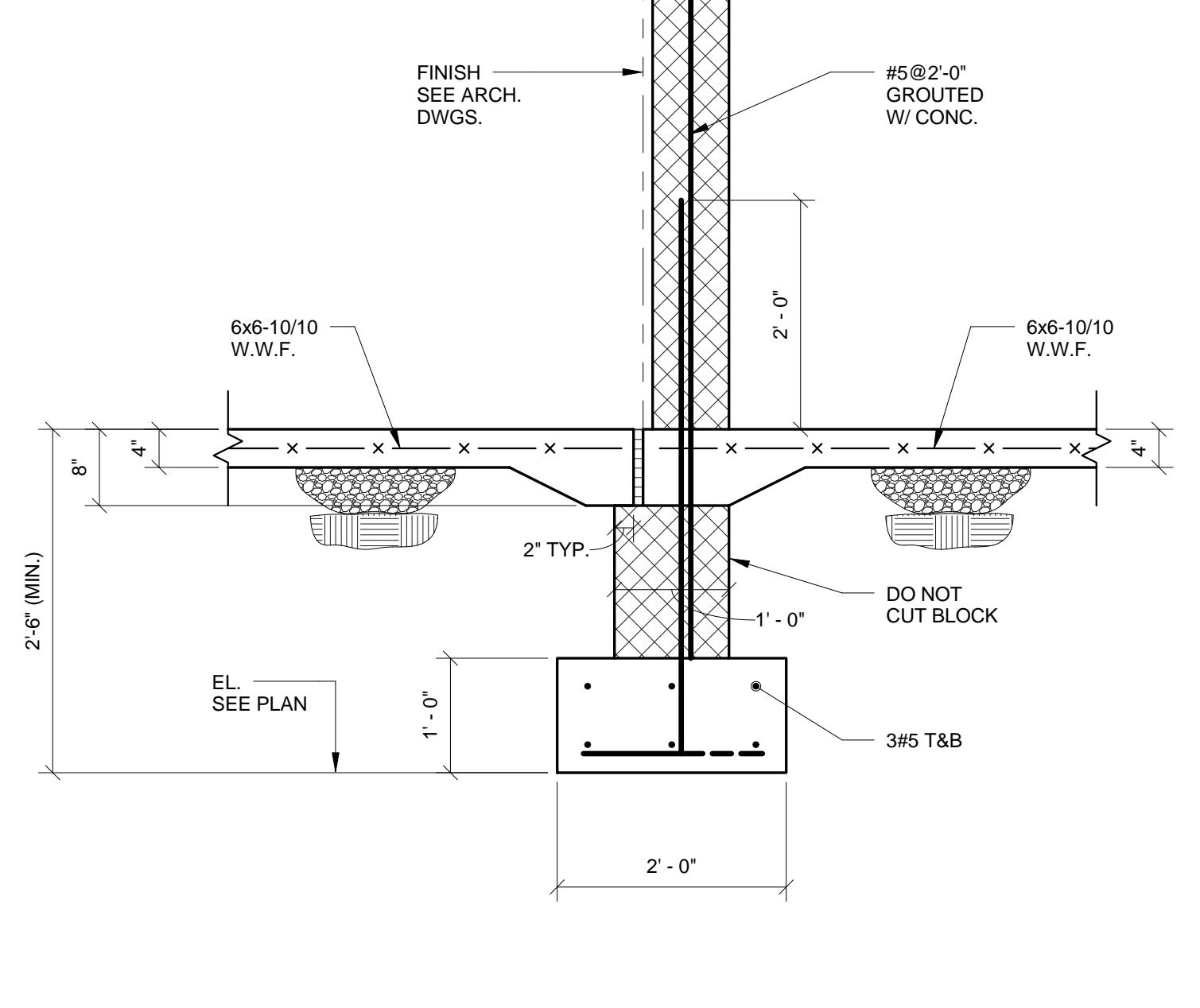
5
3/4" = 1'-0"



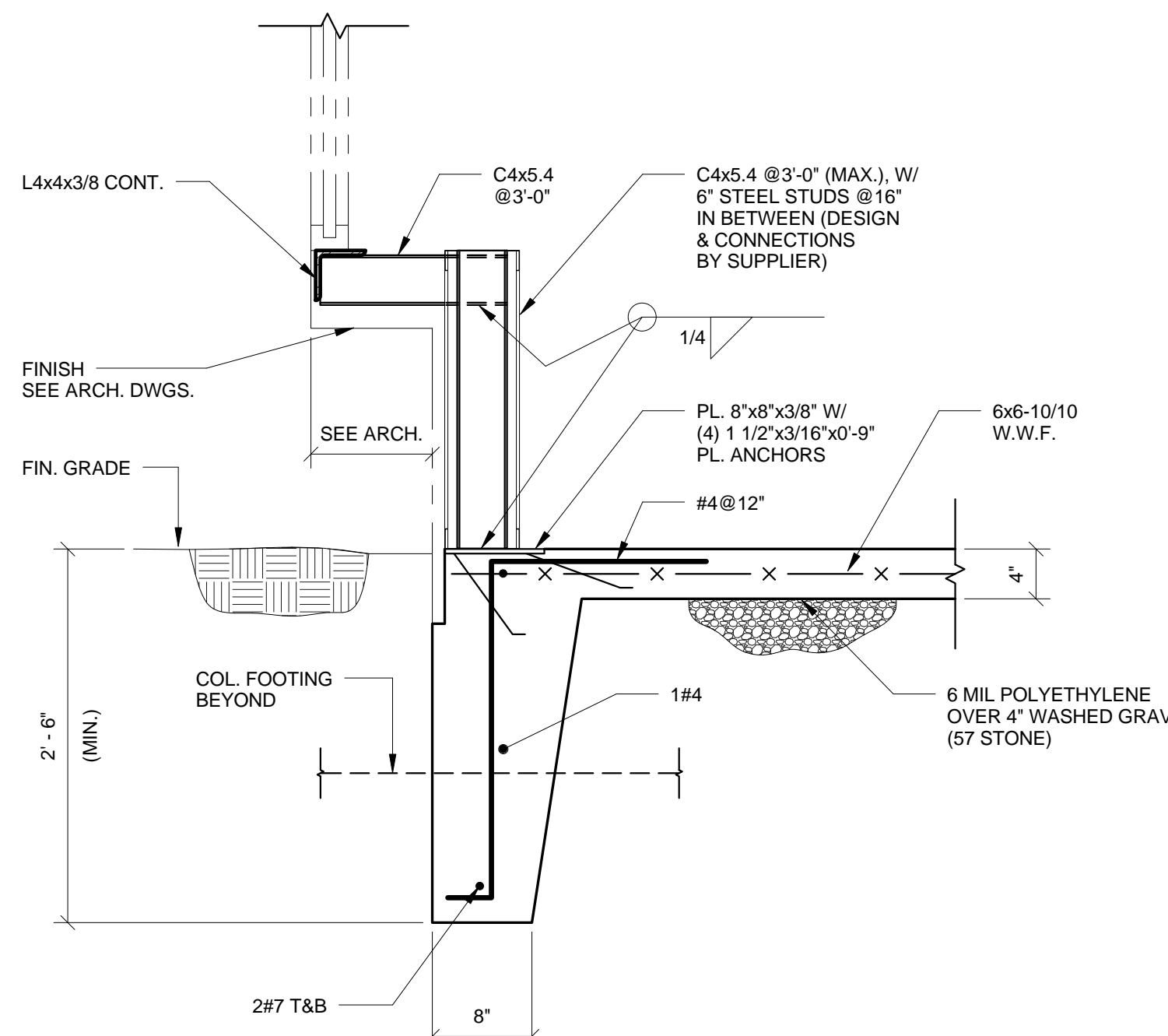
6
1" = 1'-0"



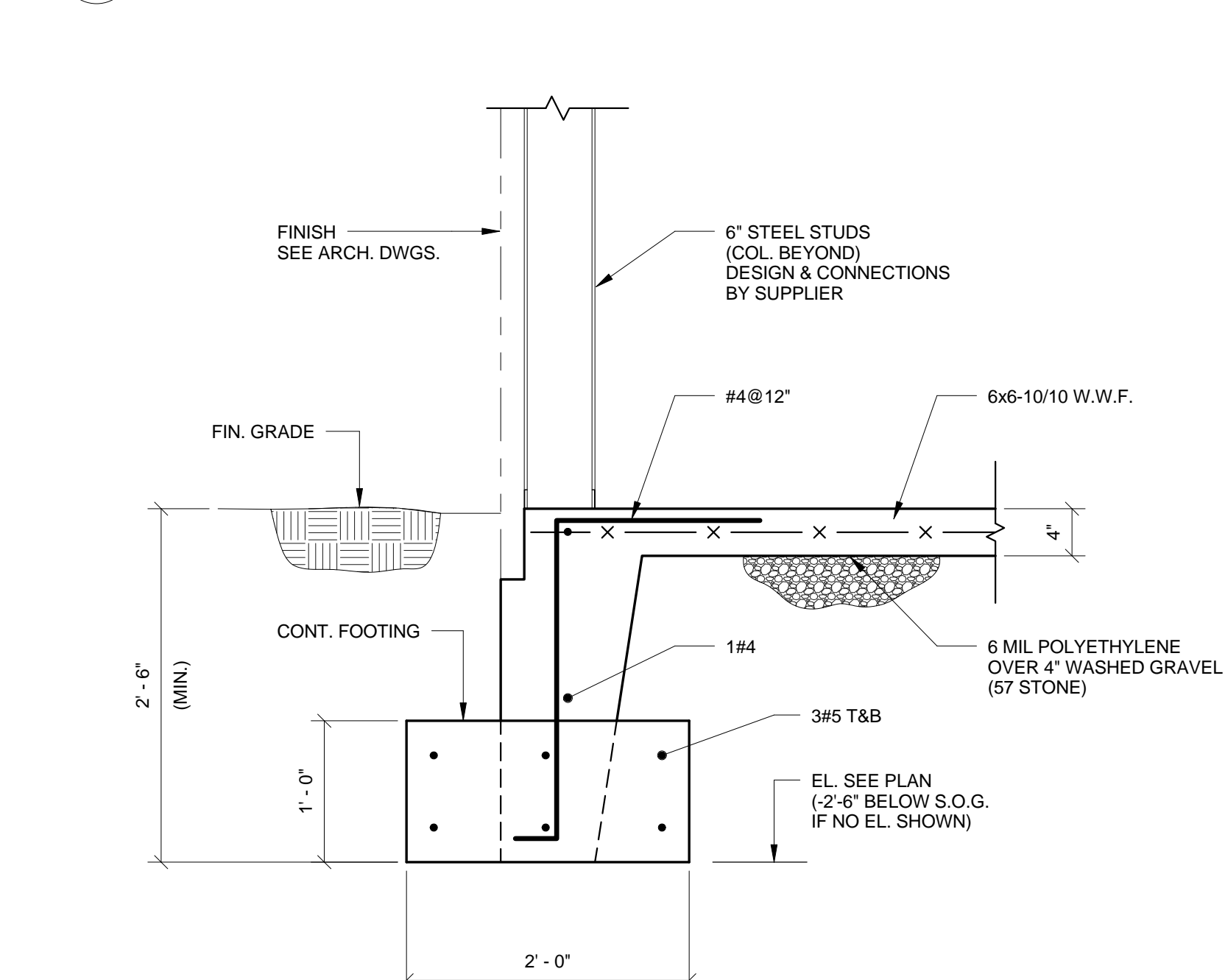
7
1" = 1'-0"



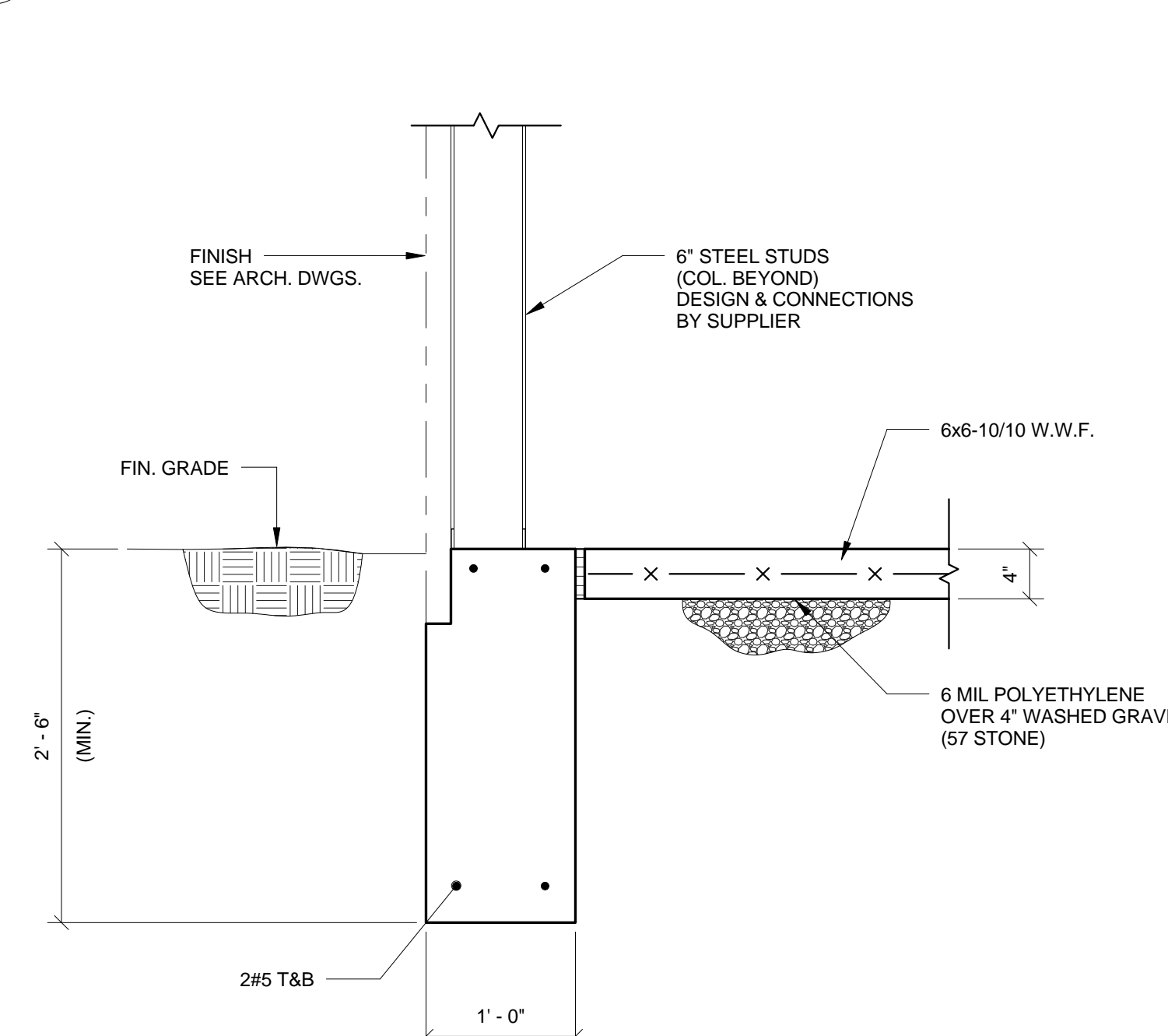
8
3/4" = 1'-0"



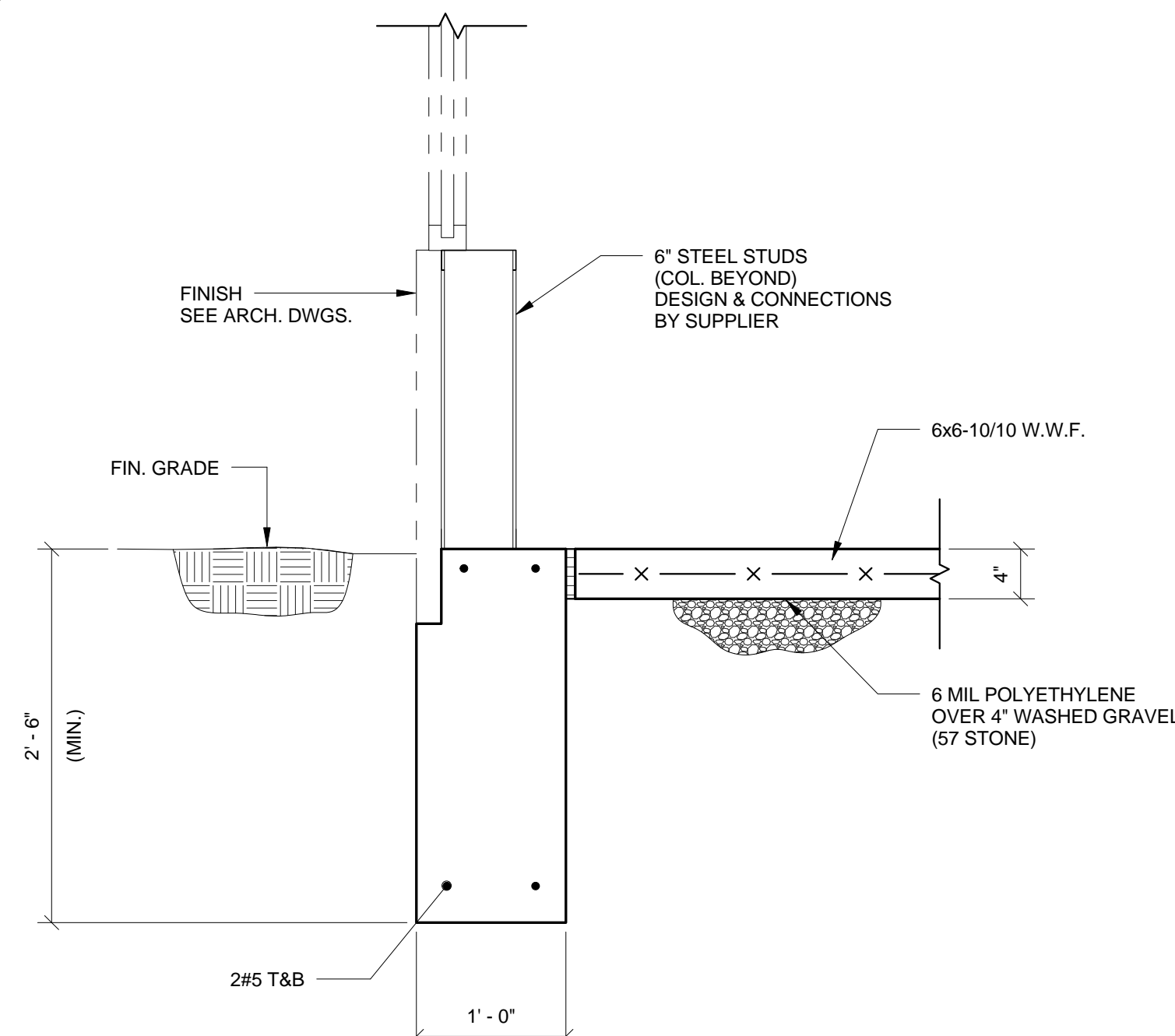
9
1" = 1'-0"



10
1" = 1'-0"



11
1" = 1'-0"



12
1" = 1'-0"

BID DOCUMENTS
FULLY SPRINKLERED

CONSULTANTS: Tadger-Cohen-Edelson Assoc. CONSULTING STRUCTURAL ENGINEERS 1109 Spring Street Suite #510 Silver Spring, MD 20910 T: (301) 587-1820 F: (301) 588-1966 www.tadgerco.com		ARCHITECT/ENGINEERS: C.C. HODGSON ARCHITECTURAL GROUP P.C.		Drawing Title SECTIONS Approved: Project Director		Project Title RELOCATE DEMENTIA UNIT Location VAMC MARTINSBURG Date 8/6/2012		Project Number VA PN 613-107 Building Number 513 Drawing Number S-301 Dwg. of --		Office of Construction and Facilities Management	
---	--	--	--	---	--	---	--	--	--	---	--