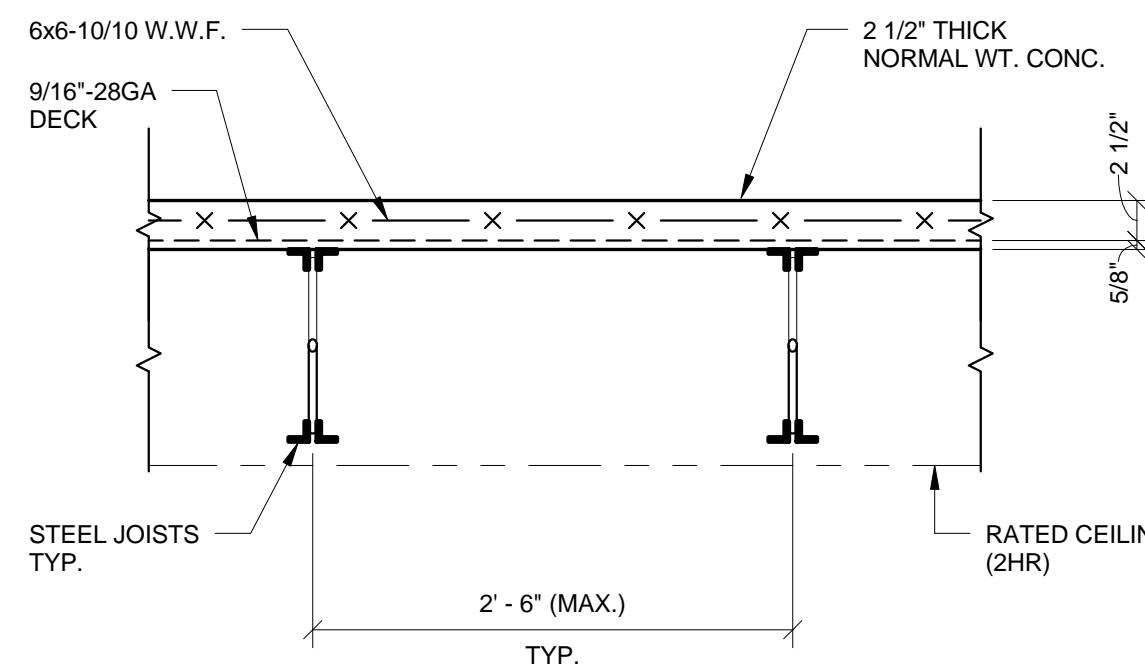


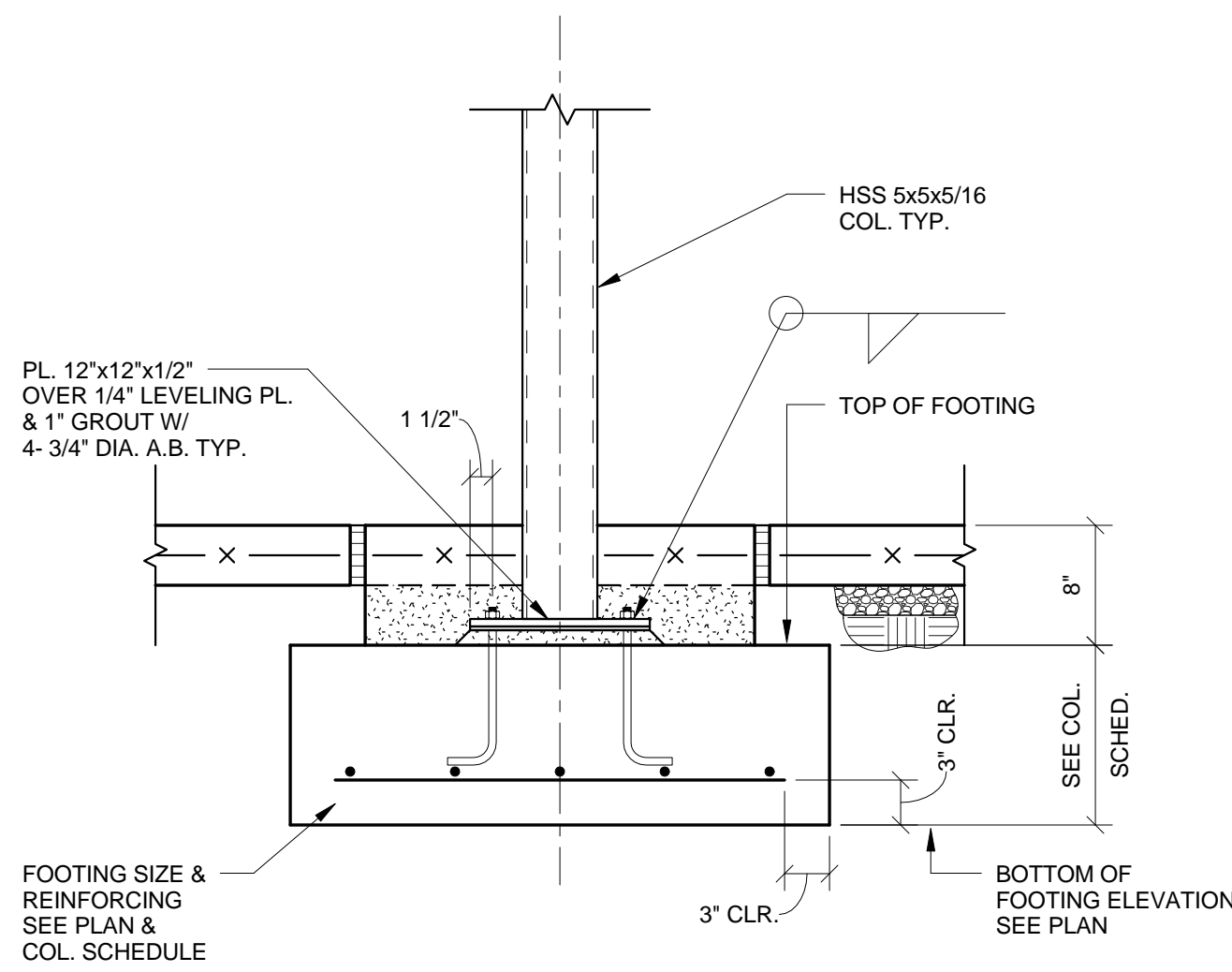
one and one half inches = one foot
one inch = one foot
three quarters inch = one foot
one half inch = one foot
one quarter inch = one foot
one eighth inch = one foot

A
B
C
D
E
F



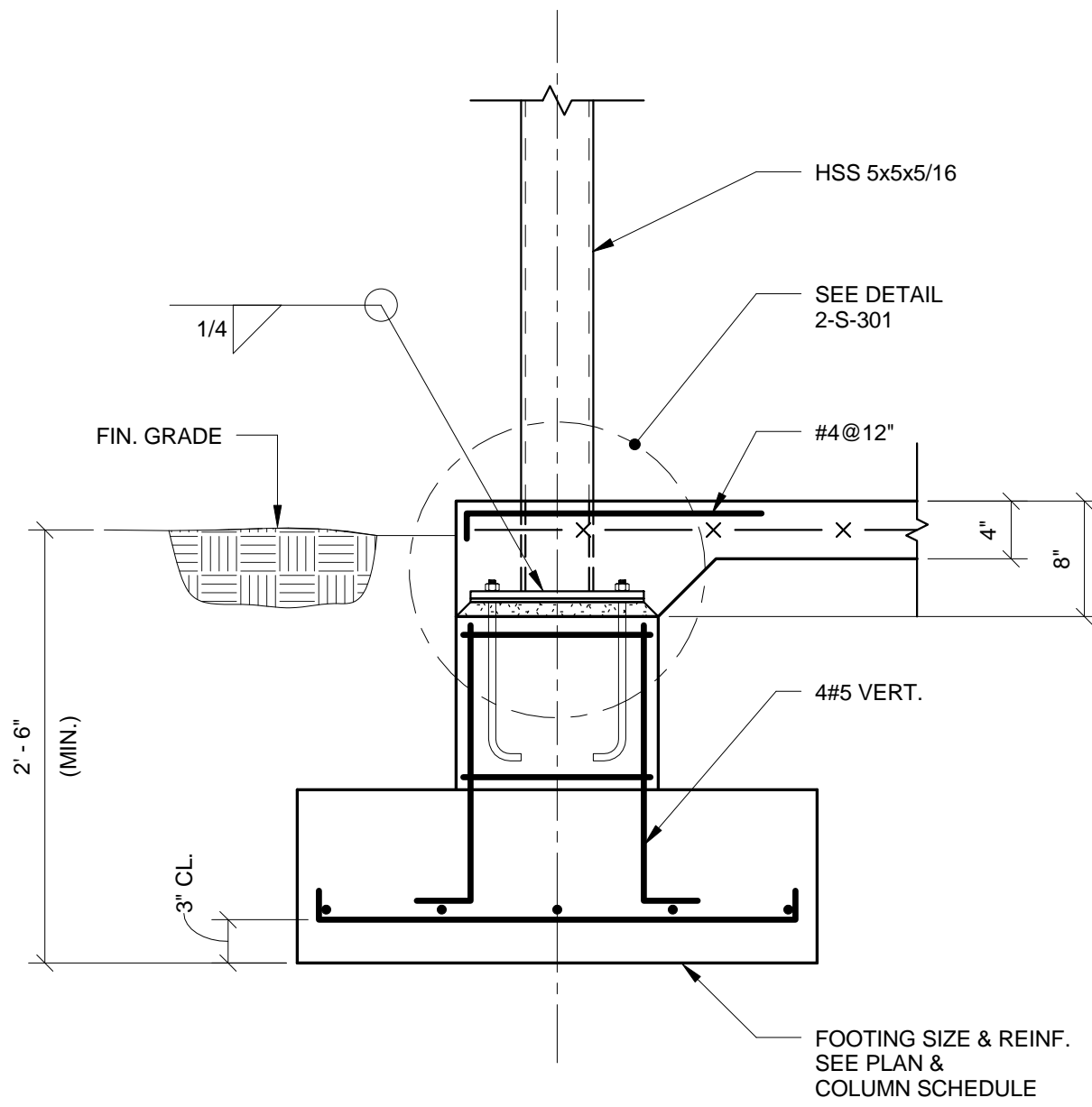
TYPICAL JOISTS AND DECK

1
1" = 1'-0"



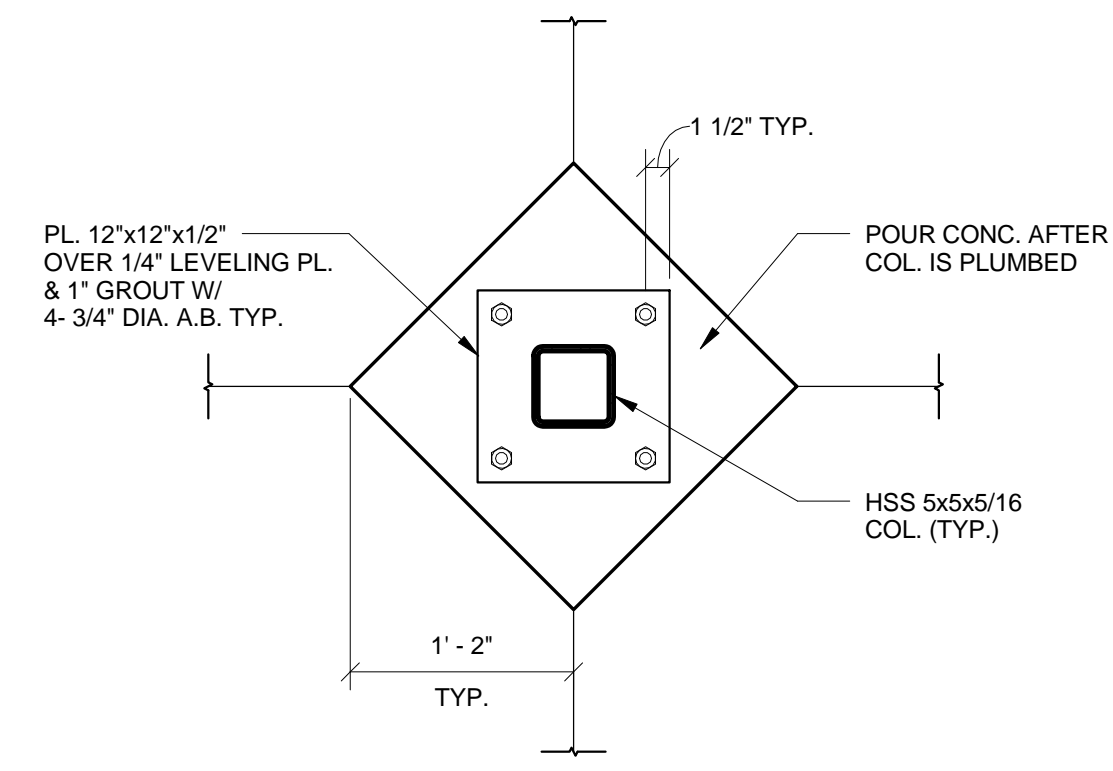
TYPICAL INTERIOR COLUMN

2
1" = 1'-0"



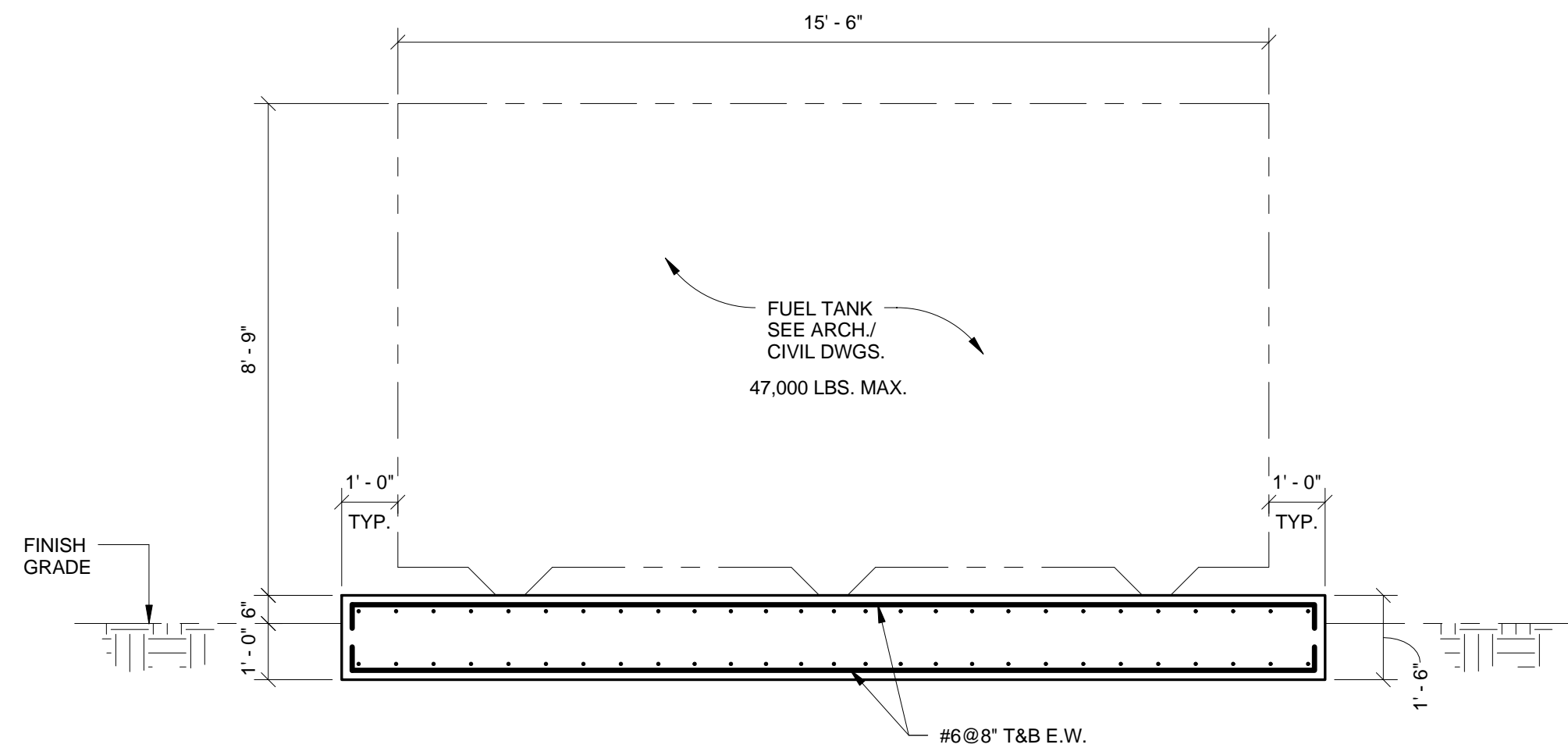
TYPICAL SECTION AT
EXTERIOR COLUMN

3
1" = 1'-0"



PLAN @ TYP. COLUMN

4
1" = 1'-0"



TYPICAL FUEL TANK PAD

6
3/8" = 1'-0"

BID DOCUMENTS
FULLY SPRINKLERED

Revisions:		Date:		CONSULTANTS: Tadger-Cohen-Edelson Assoc. CONSULTING STRUCTURAL ENGINEERS 1109 Spring Street Suite #510 Silver Spring, MD 20910 T (301) 587-1820 F (301) 588-1966 www.tadgerco.com		ARCHITECT/ENGINEERS: C.C. HODGSON ARCHITECTURAL GROUP P.C.		Drawing Title TYPICAL DETAILS		Project Title RELOCATE DEMENTIA UNIT		Project Number VA PN 613-107		Office of Construction and Facilities Management	
				111013.00				Approved: Project Director		Location VAMC MARTINSBURG		Building Number 513		Drawing Number S-402	
								Date 8/6/2012		Checked Checker		Drawn Author		Dwg. of --	