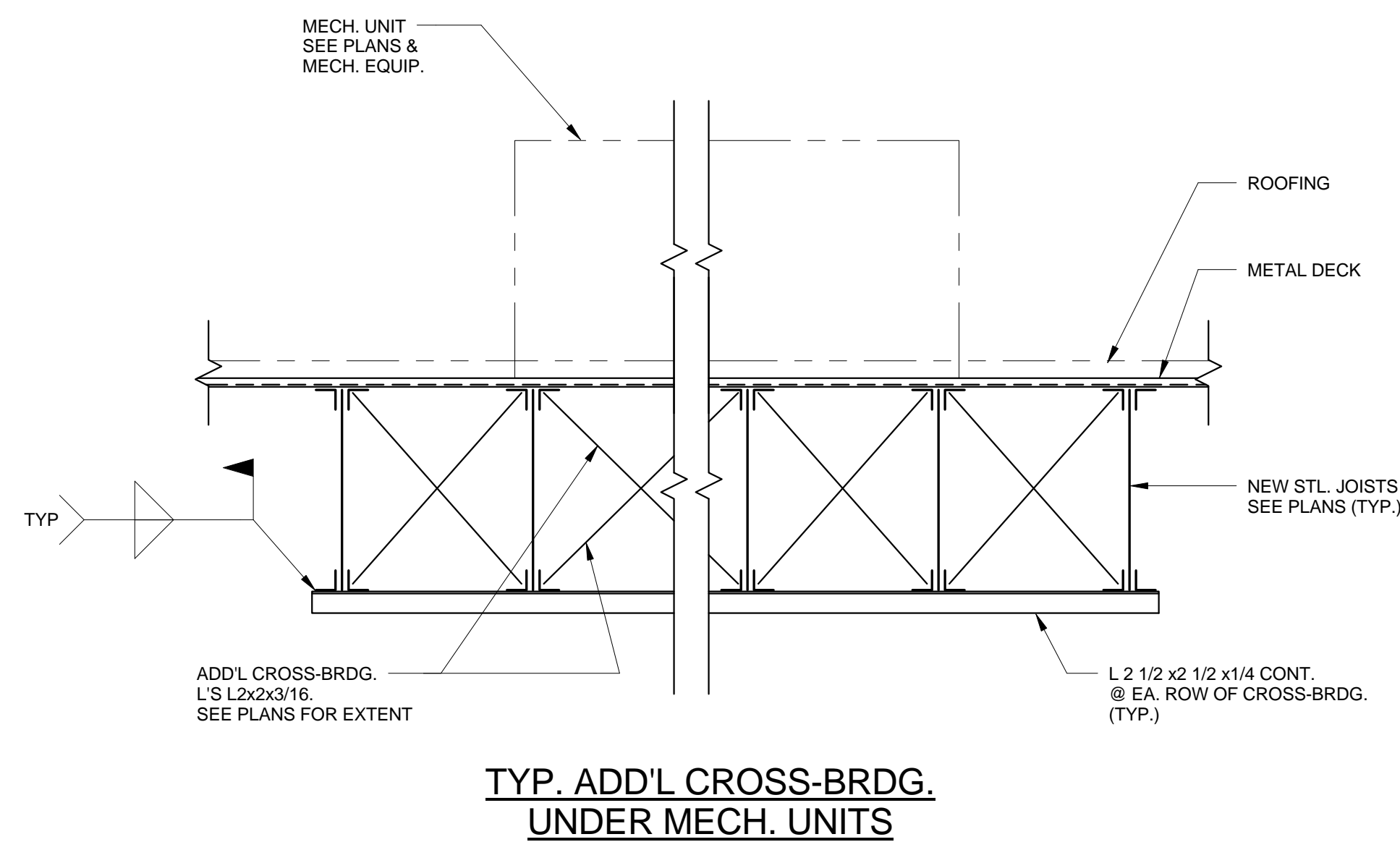
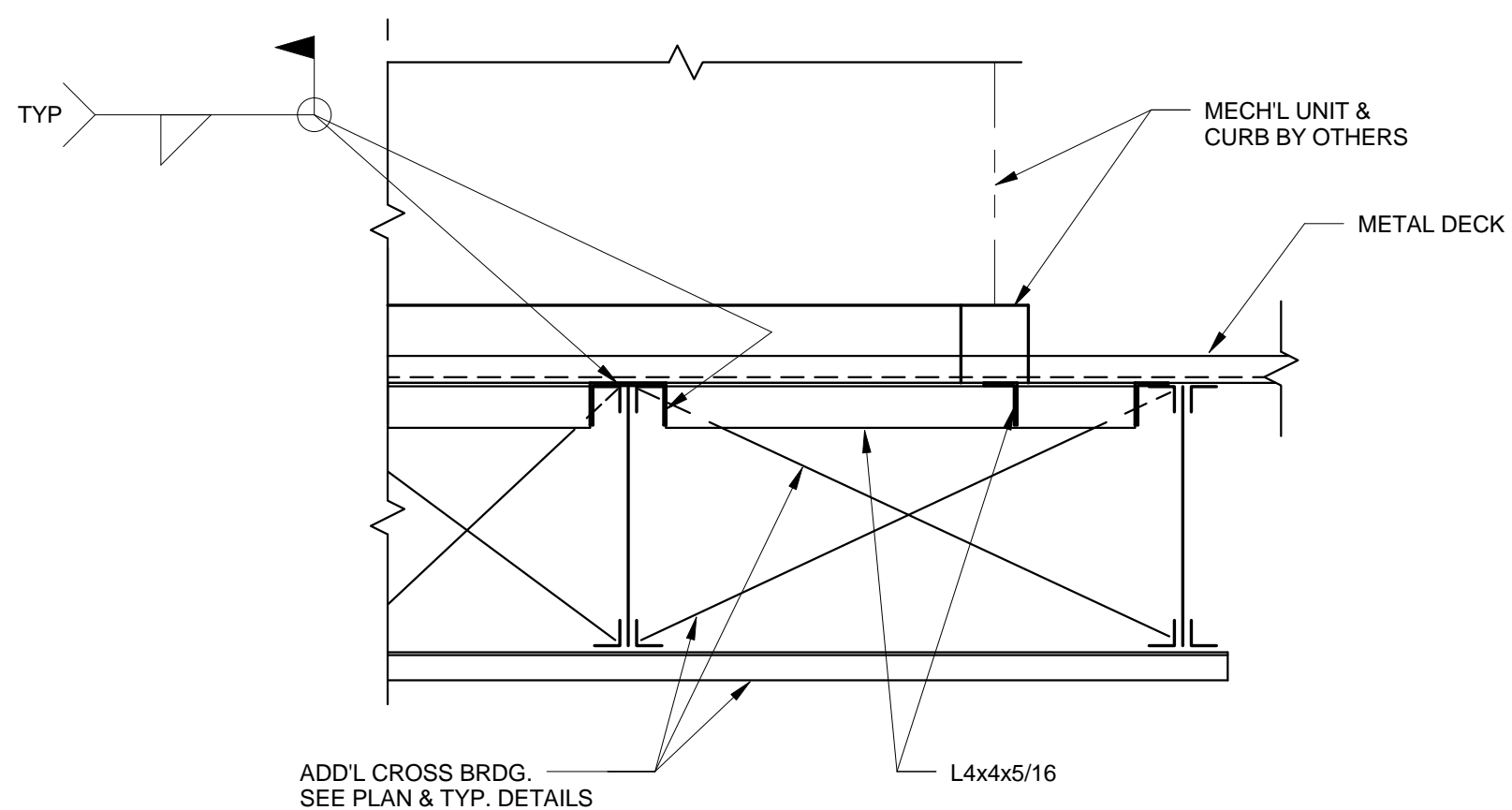


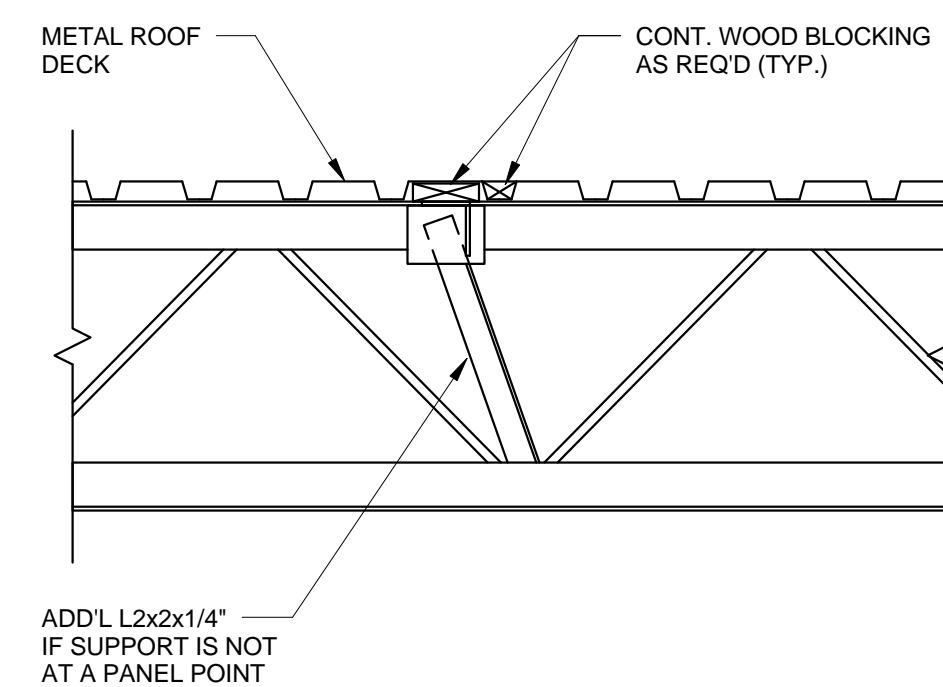
one and one half inches = one foot
one inch = one foot
three quarters inch = one foot
one quarter inch = one foot
one eighth inch = one foot



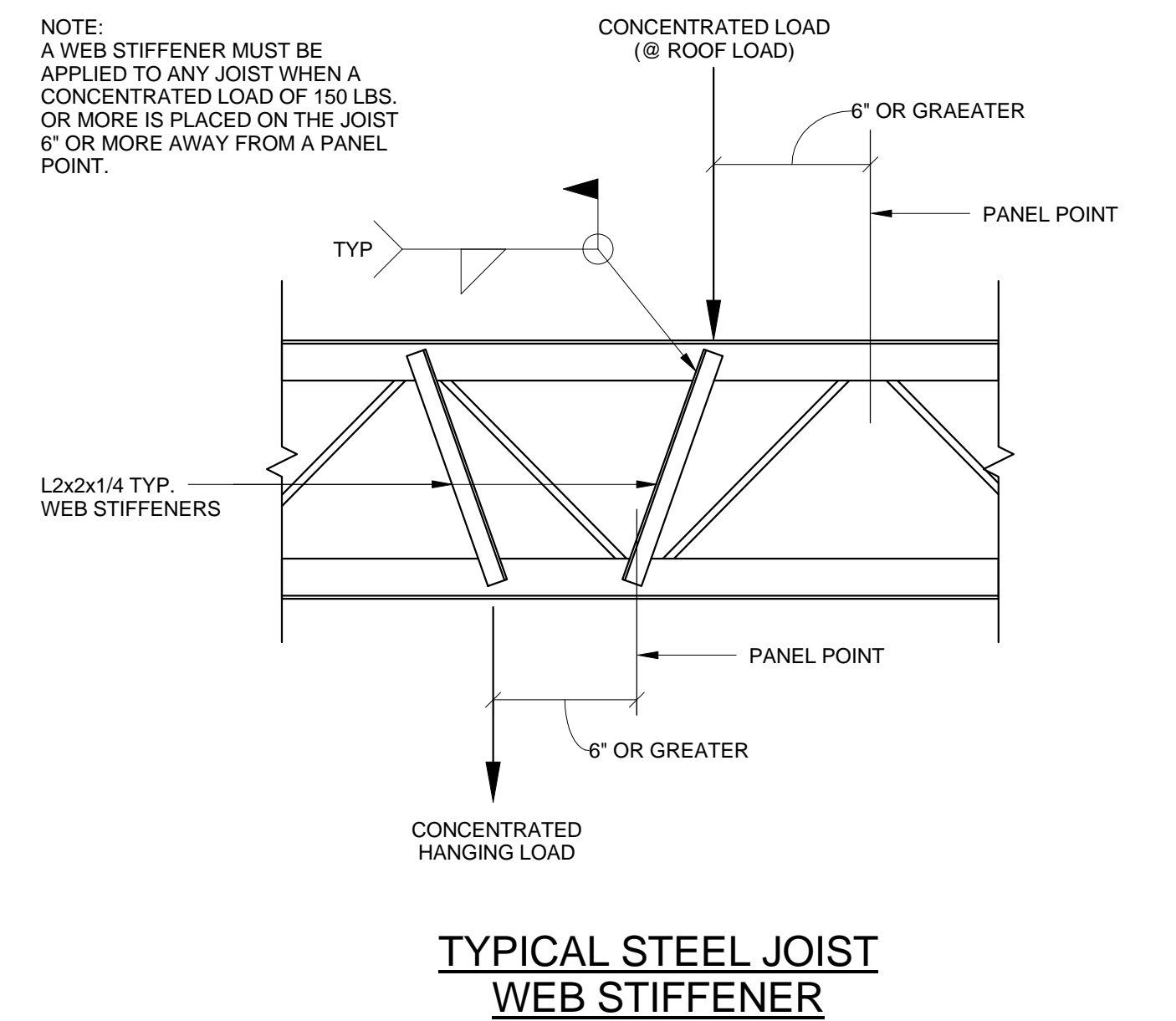
1 DETAIL
3/4" = 1'-0"



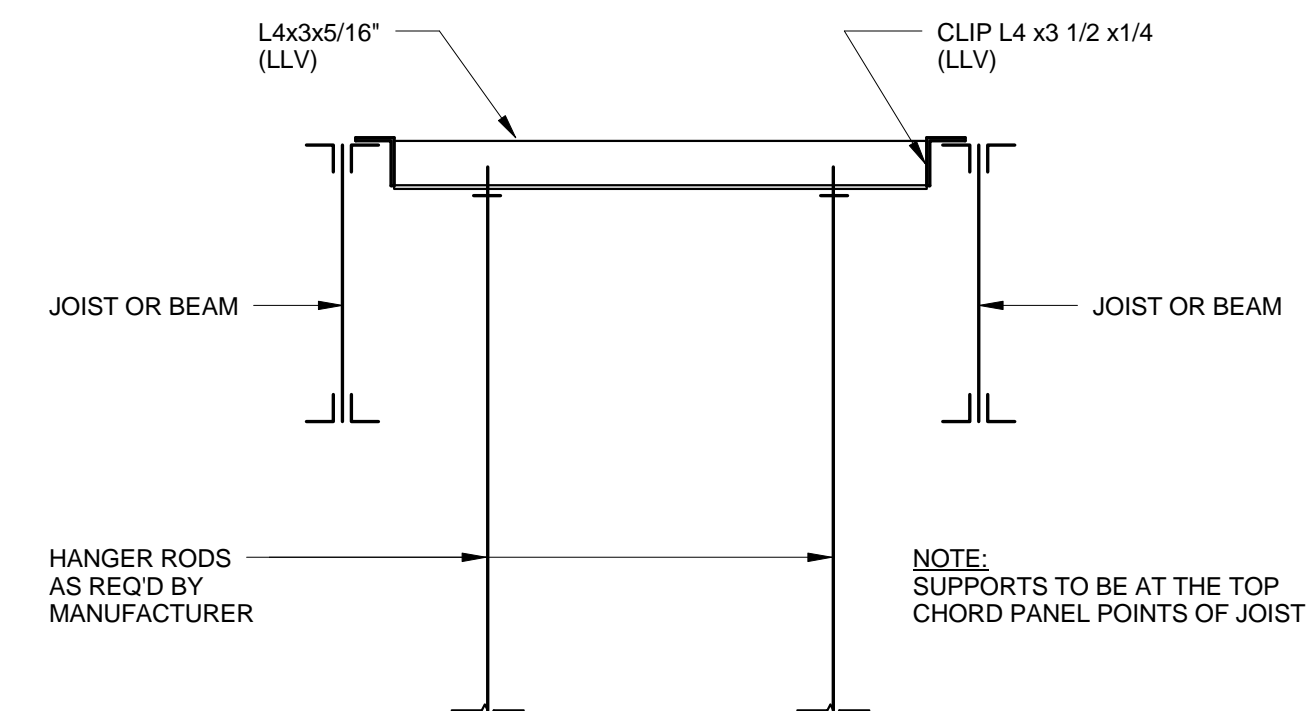
2 DETAIL
3/4" = 1'-0"



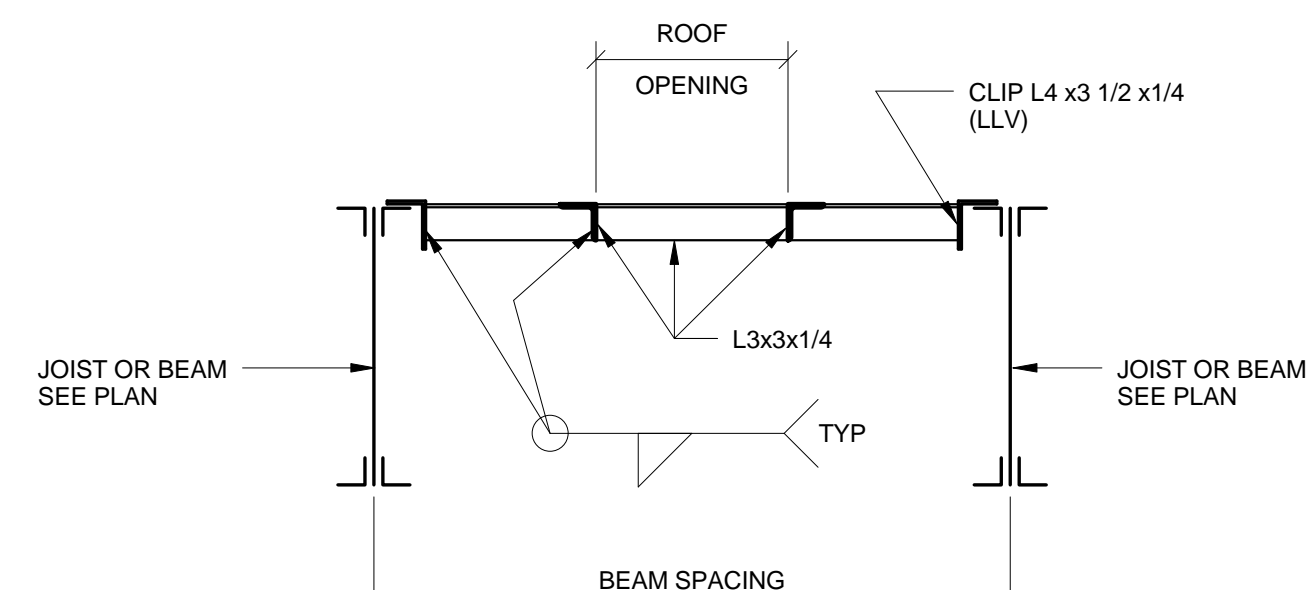
3 DETAIL
3/4" = 1'-0"



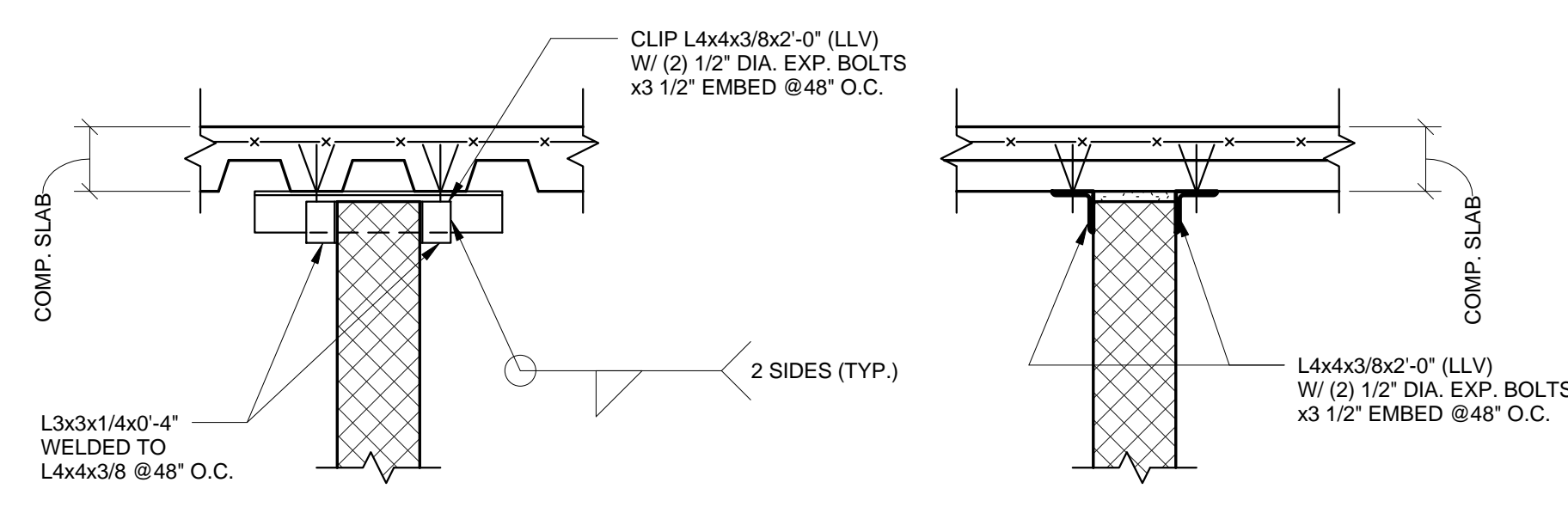
4 DETAIL
3/4" = 1'-0"



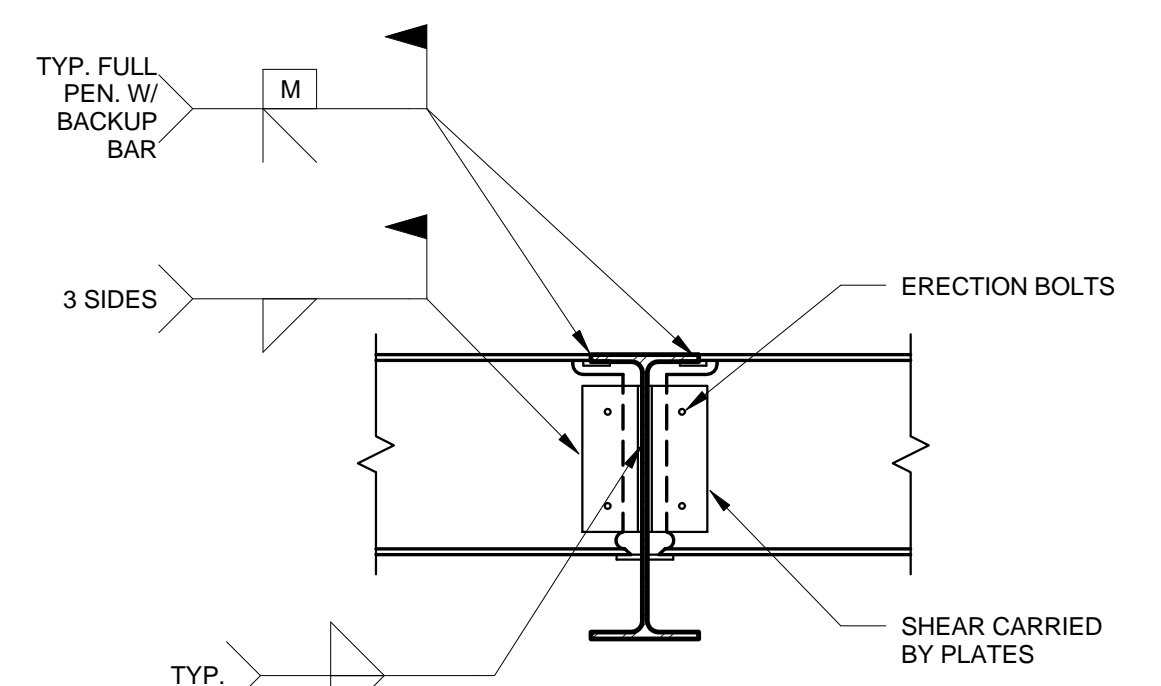
5 DETAIL
3/4" = 1'-0"



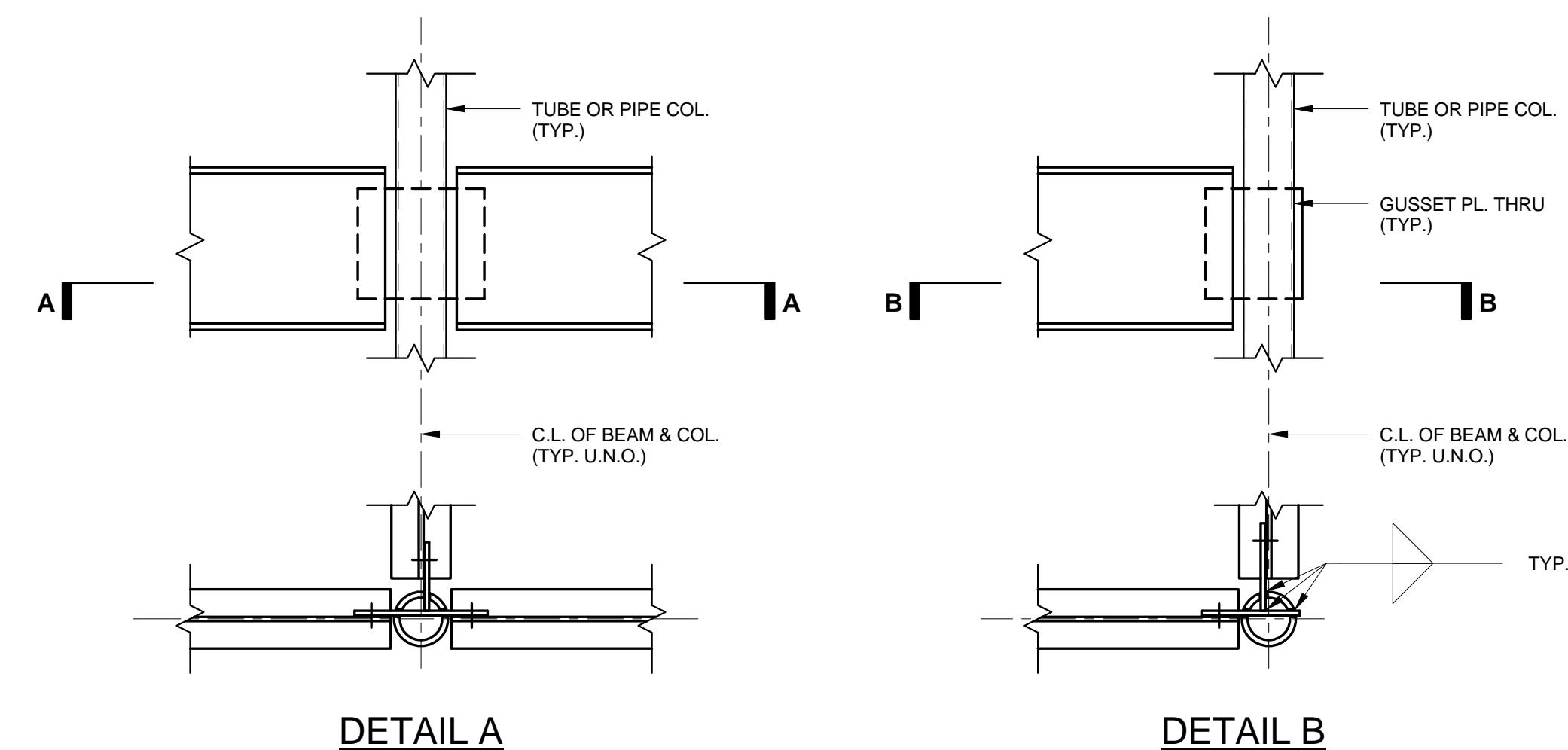
6 DETAIL
3/4" = 1'-0"



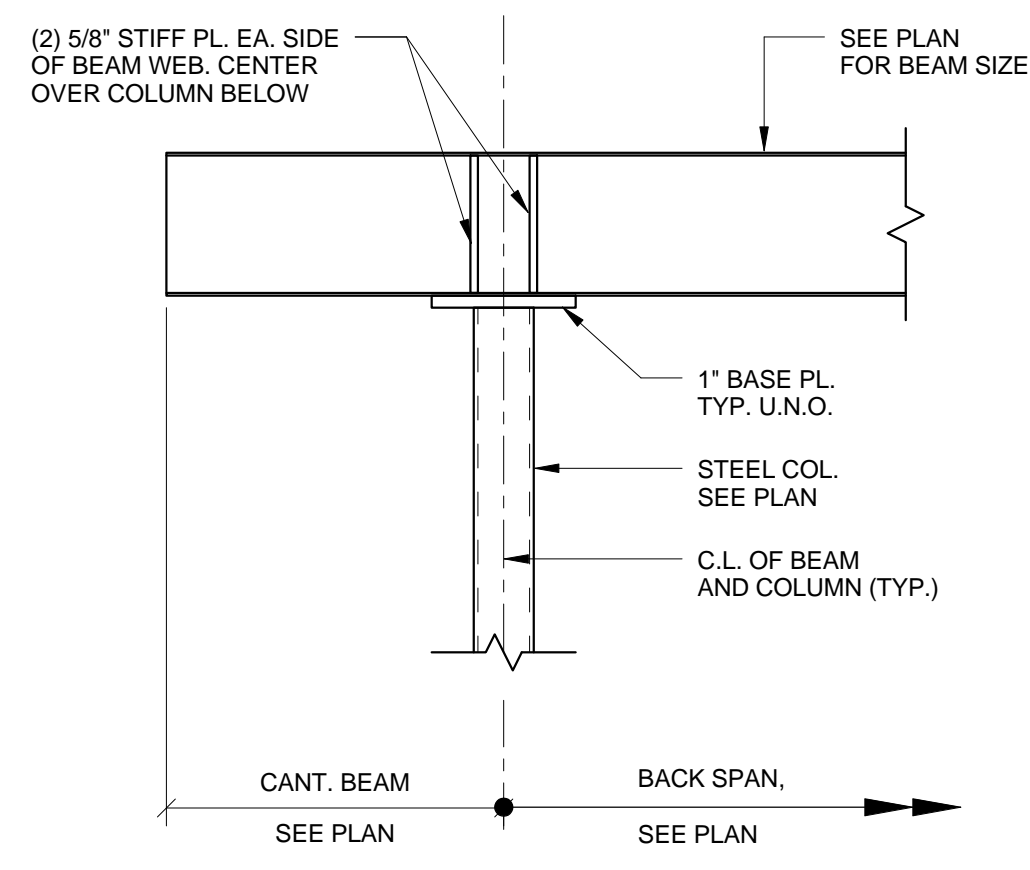
7 DETAIL
3/4" = 1'-0"



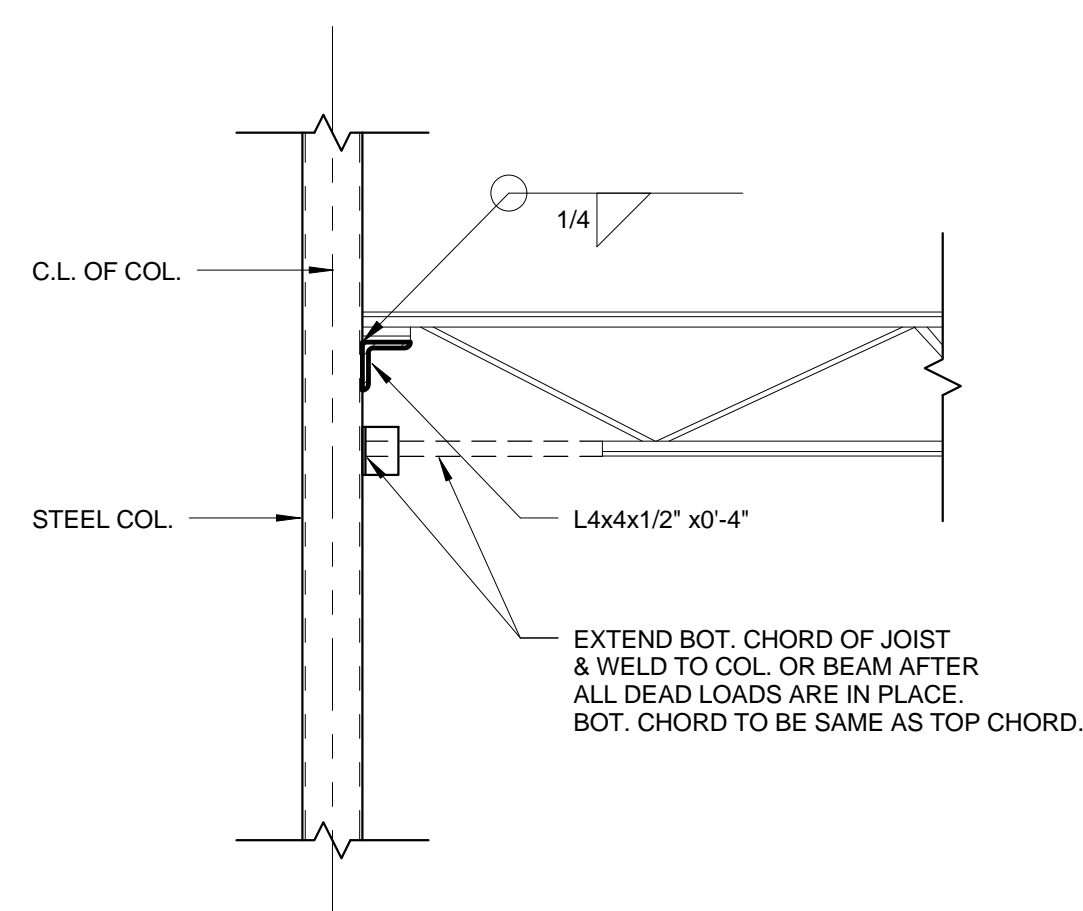
8 DETAIL
3/4" = 1'-0"



9 DETAIL
3/4" = 1'-0"



10 DETAIL
3/4" = 1'-0"



11 DETAIL
3/4" = 1'-0"

BID DOCUMENTS
FULLY SPRINKLERED

Revisions:		Date:		CONSULTANTS: Tadger-Cohen-Edelson Assoc. CONSULTING STRUCTURAL ENGINEERS 1109 Spring Street Suite #510 Silver Spring, MD 20910 T: (301) 587-1820 F: (301) 588-1966 www.tadgerco.com		ARCHITECT/ENGINEERS: C.C. HODGSON ARCHITECTURAL GROUP P.C.		Drawing Title TYPICAL DETAILS		Project Title RELOCATE DEMENTIA UNIT		Project Number VA PN 613-107		Office of Construction and Facilities Management	
								Approved: Project Director		Location VAMC MARTINSBURG		Building Number 513		Drawing Number S-404	
										Date 8/6/2012		Checked Checker		Drawn Author	
												Dwg. of --			