

one and one half inches = one foot
one inch = one foot
three quarters inch = one foot
one half inch = one foot
one quarter inch = one foot
one eighth inch = one foot

A

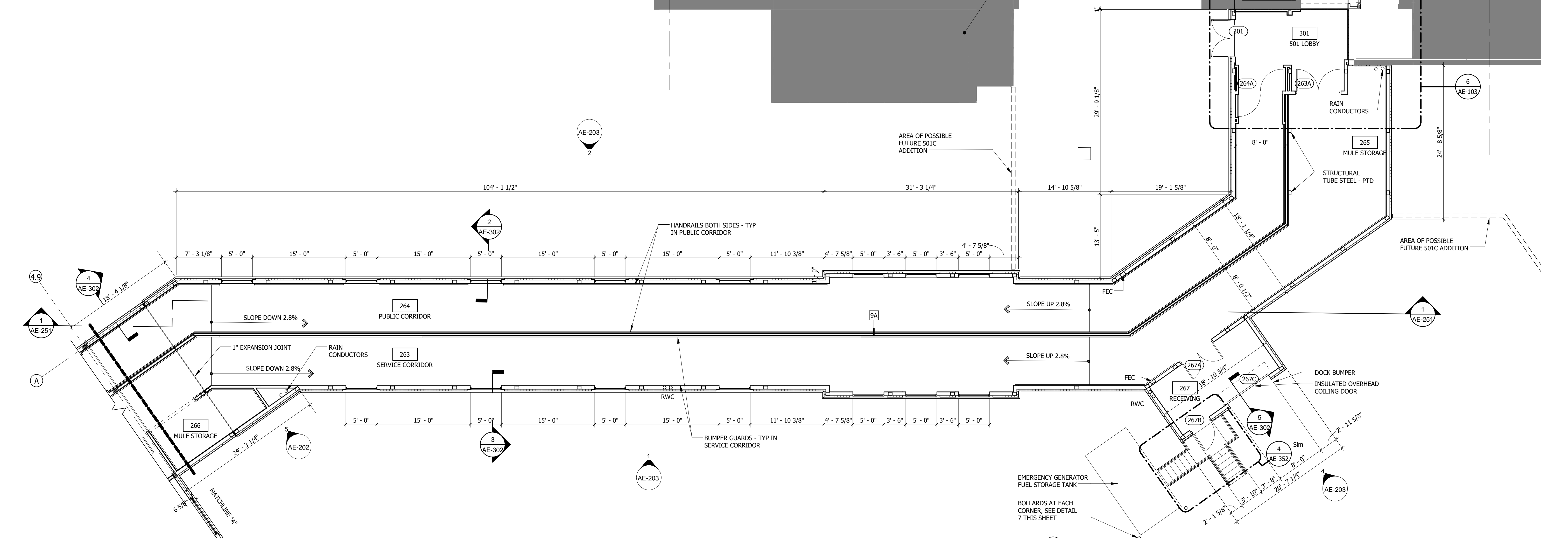
B

C

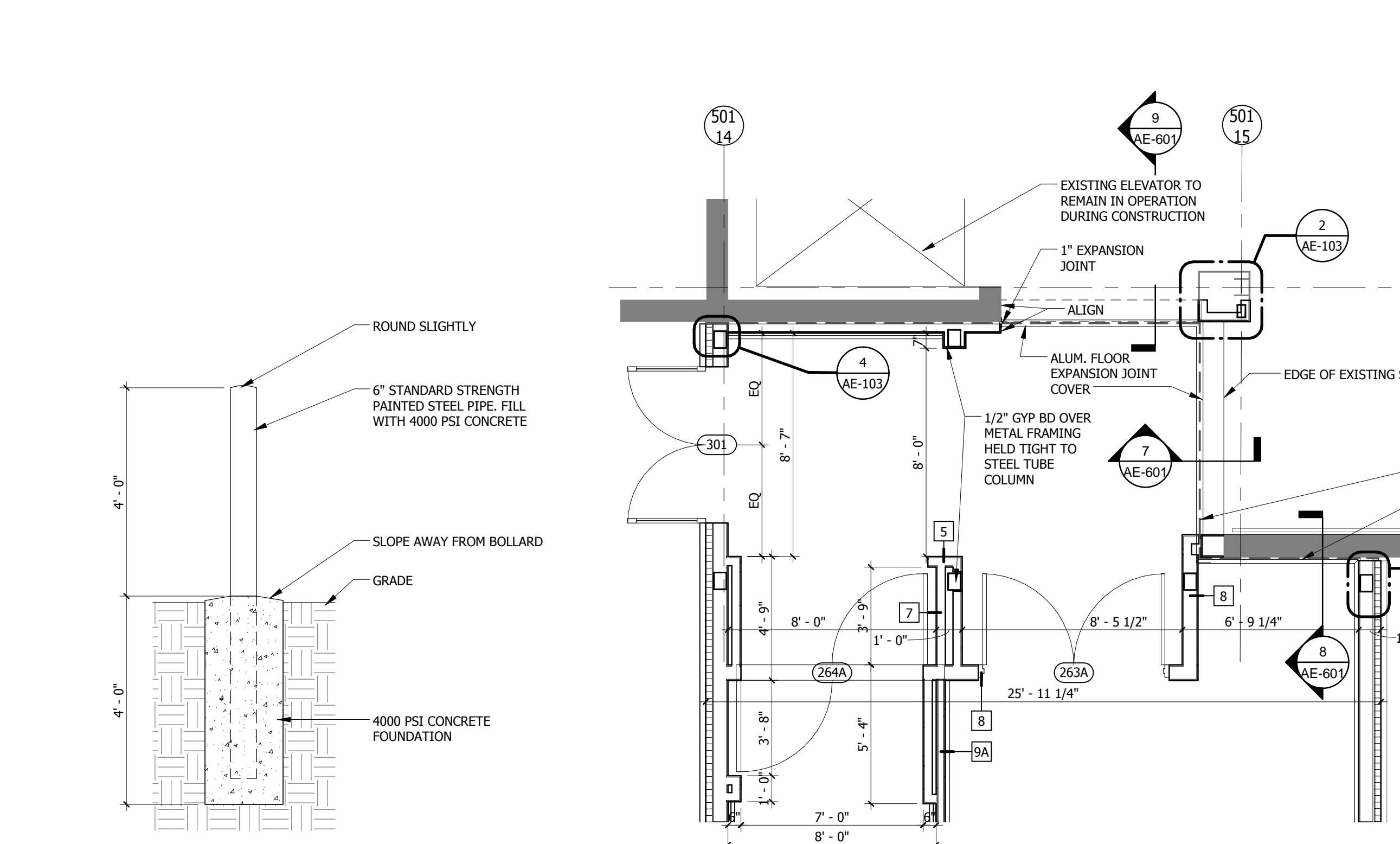
D

E

F

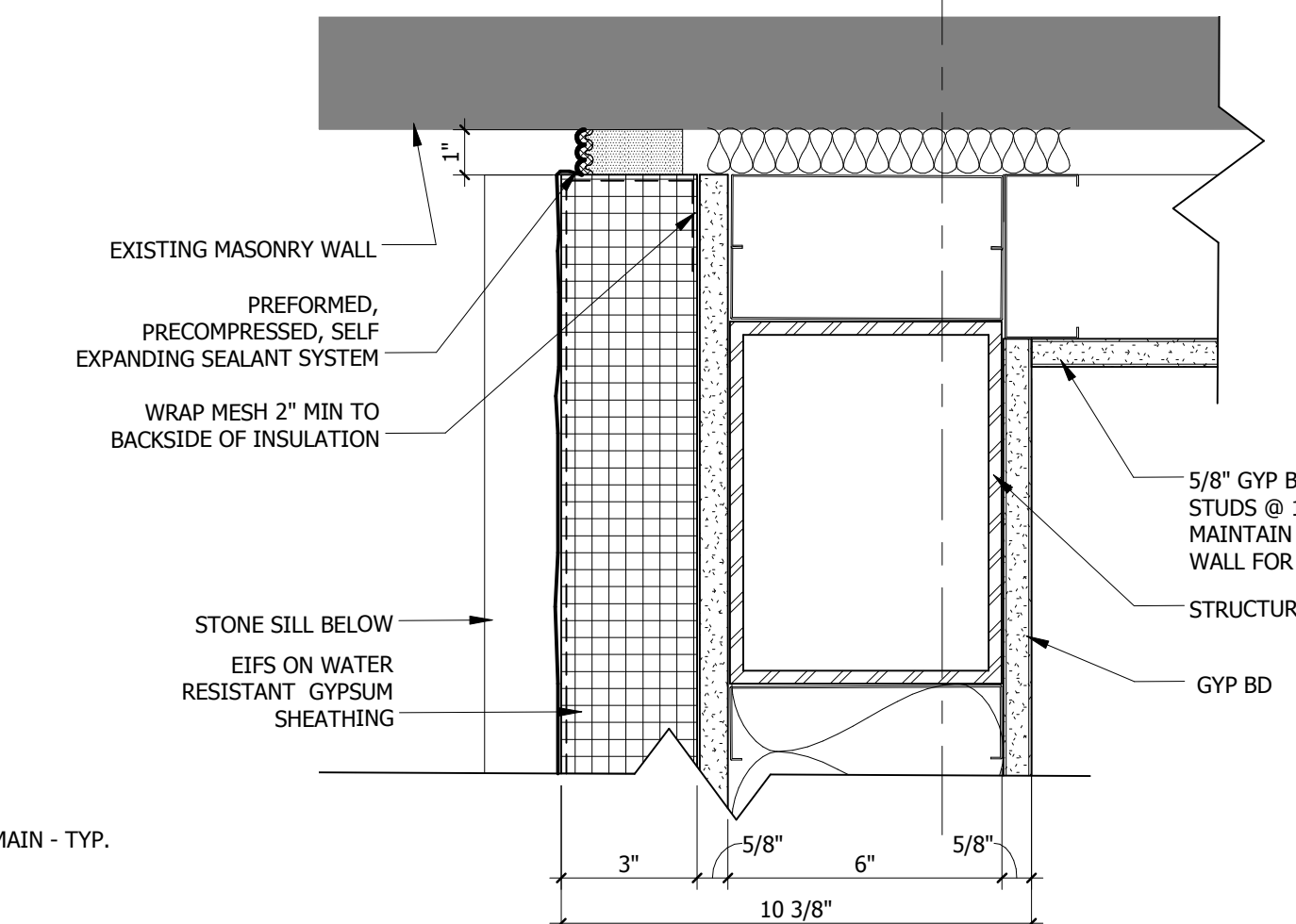


3 501 GROUND FLOOR PLAN -CONNECTOR
SCALE 1/8" = 1'-0"

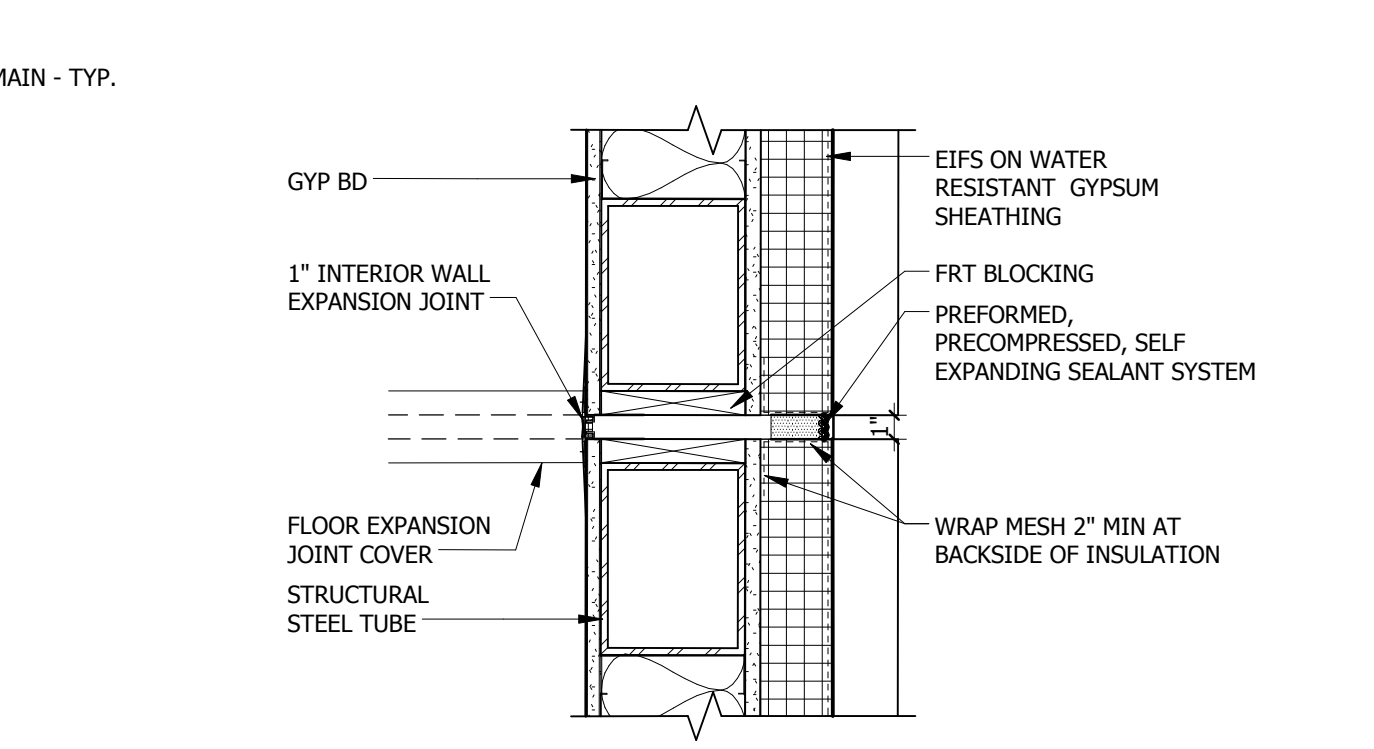


6 ENLARGED FLOOR PLAN AT 501C CONNECTION
SCALE 1/4" = 1'-0"

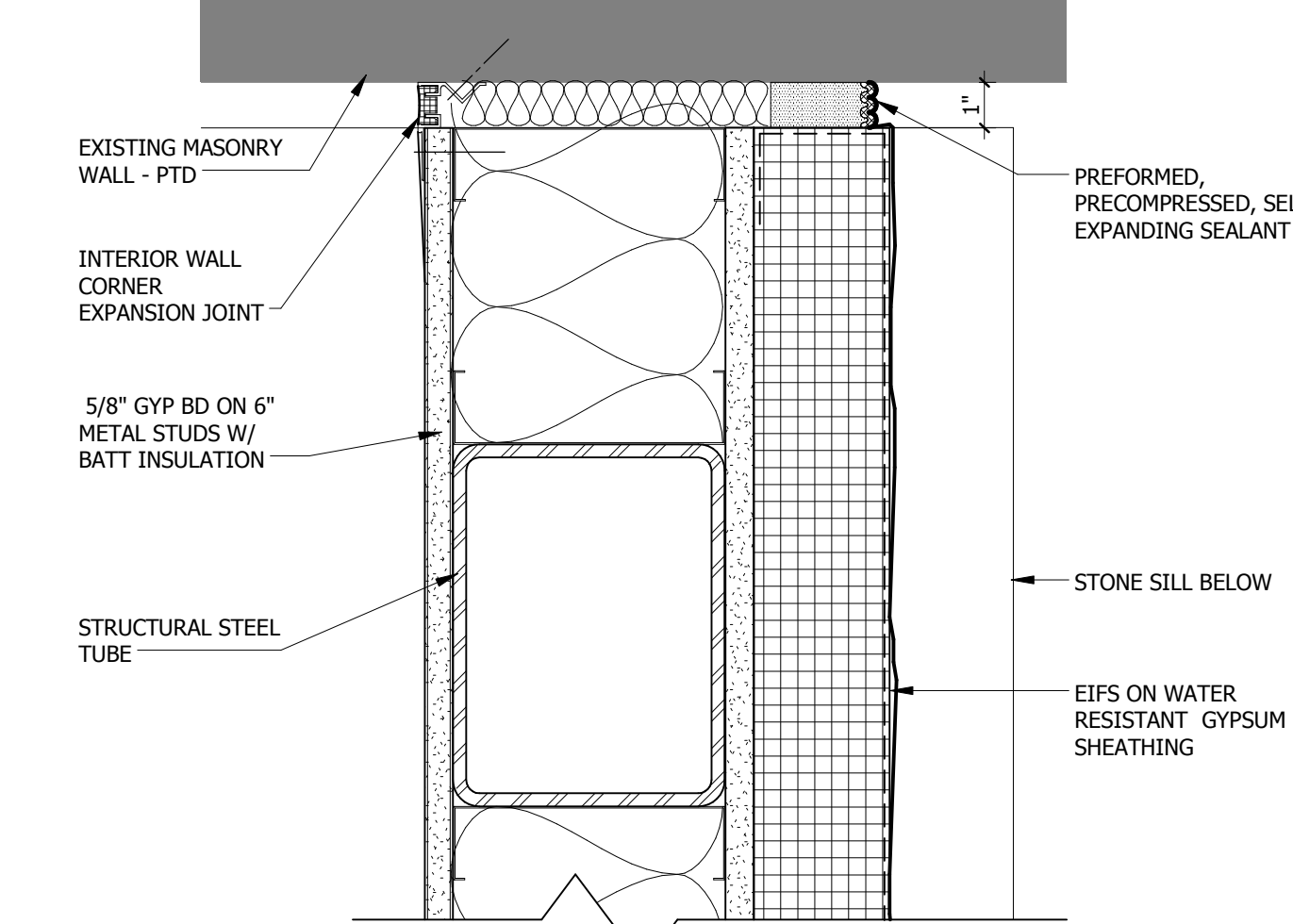
7 BOLLARD DETAIL
SCALE 1/2" = 1'-0"



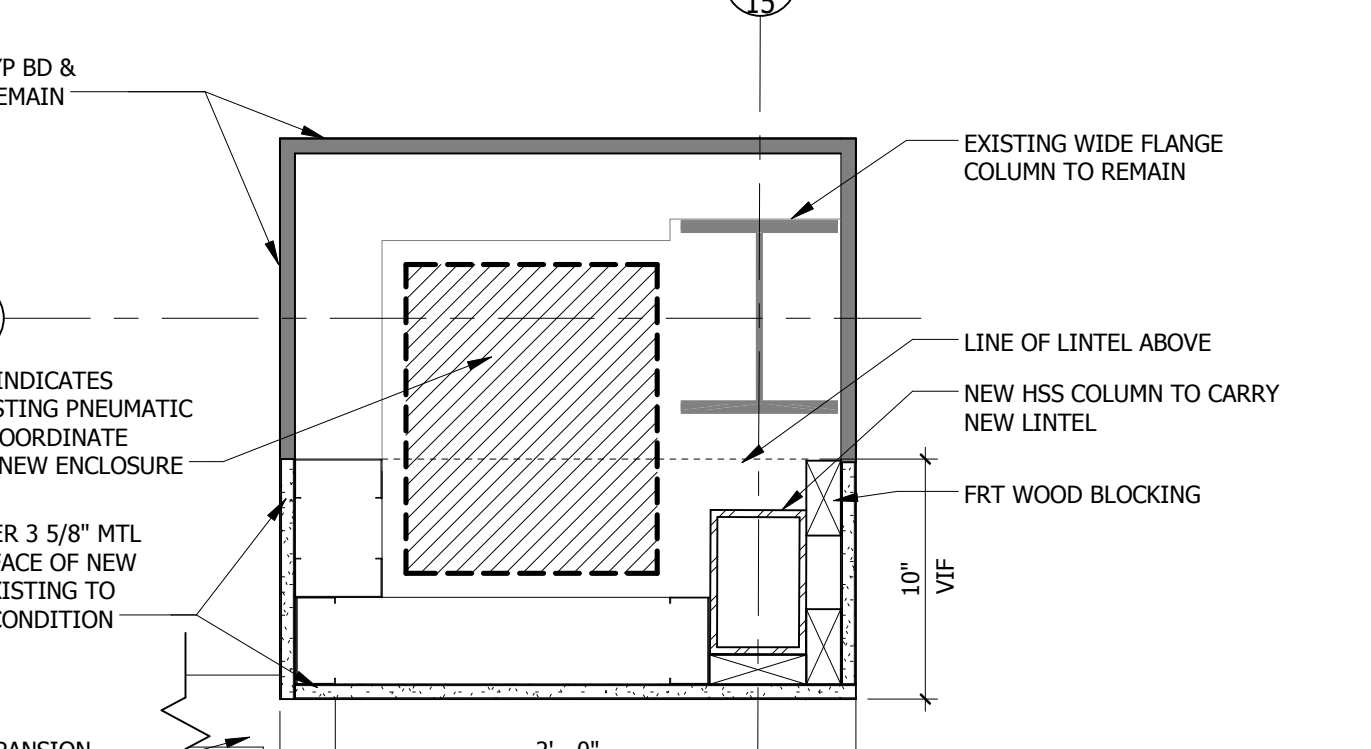
4 EXPANSION JOINT PLAN DETAIL
3" = 1'-0"



5 EXPANSION JOINT PLAN DETAIL
1 1/2" = 1'-0"



1 EXPANSION JOINT PLAN DETAIL
3" = 1'-0"



2 PLAN DETAIL AT 501C
SCALE 1 1/2" = 1'-0"

GENERAL NOTES:

- INTERIOR DIMENSIONS ARE FROM FINISH TO FINISH OR CENTERLINE OF COLUMNS UNLESS NOTED OTHERWISE.
- TOLERANCES FOR BUILT-IN ITEMS, INCLUDING ARCHITECTURAL WINDOWS, CASEWORK AND APPLIANCES MUST BE FIELD VERIFIED BY THE CONTRACTOR TO ENSURE ADEQUATE CLEARANCES AND PROPER FIT.
- REFER TO REFLECTED CEILING PLANS FOR CEILING HEIGHT AND TYPES.
- REFER TO FINISH SCHEDULE FOR ALL FINISHES THROUGHOUT THE PROJECT.
- REFER TO 1/8" SCALE PLANS FOR DOOR AND WINDOW DESIGNATIONS.
- REFER TO LIFE SAFETY PLANS FOR LOCATION OF FIRE RATED PARTITIONS.
- PROVIDE FIRE RETARDATION WOOD BLOCKING AS REQUIRED FOR INSTALLATION OF FUTURE GRAB BARS.
- PROVIDE FIBER-REINFORCED WATER & MOLD RESISTANT GYPSUM PANELS AT ALL WET WALL LOCATIONS AND WALLS BEHIND AND ADJACENT TO SINKS.
- CENTER VANITY LIGHTS ABOVE MIRRORS.
- ALL ROOFTOP HVAC EQUIPMENT TO HAVE SCREENED ENCLOSURES

PARTITION TYPES:

- 1 HOUR FIRE-RATED BARRIER OR 1 HOUR FIRE RATED SMOKE BARRIER
5/8" FIRE-RATED GYP.BD. ON BOTH SIDES OF 3 5/8" METAL STUDS @ 16" O.C. FROM FLOOR TO ROOF OR FLOOR DECK ABOVE. PROVIDE RATE SEALANT AT TOP AND BOTTOM EDGES OF GYP. BD. PROVIDE FIRE SAFING AT FLUTES OF FLOOR OR ROOF DECK ABOVE PER UL NO. U419.
- 0 HOUR SMOKE PARTITION (NON-RATED)
CORRIDOR PARTITION, SMOKE SEALED TOP, AT RATED CEILING AND AT FLOOR. 5/8" GYP.BD. ON BOTH SIDES OF 3 5/8" METAL STUDS, 16" O.C., (AT CHASE WALLS, PROVIDE GYP.BD. ON FINISHED SIDE OF STUDS).
- 2 HOUR FIRE-RATED BARRIER
2 LAYERS 5/8" FIRE-RATED GYP.BD. ON BOTH SIDES OF 3 5/8" METAL STUDS @ 16" O.C. SEAL GYP.BD. AT FLOOR AND AT ROOF DECK OR FLOOR STRUCTURE ABOVE. PROVIDE FIRE SAFING AT FLUTES OF FLOOR OR ROOF DECK ABOVE PER UL NO. U419.
- 2A 1 HOUR FIRE-RATED BARRIER
NOMINAL 8"x8"x16" CONCRETE MASONRY UNIT TO UNDERSIDE OF RATED STRUCTURE ABOVE PER IBC TABLE 720.1(2). ADD ONE LAYER OF 5/8" GYP. BD. ON ONE SIDE OF 1 5/8" METAL STUD FURRING @ 16" O.C. SEAL TOP OF WALL WITH FIRE SAFING AT ROOF OR FLOOR DECK ABOVE.
- 2B 1 HOUR FIRE-RATED BARRIER
NOMINAL 8"x8"x16" CONCRETE MASONRY UNITS TO UNDERSIDE OF RATED STRUCTURE PER IBC TABLE 720.1(2).
- 1 HOUR FIRE-RATED SHAFT WALL
2 1/2" C-H STUDS AT 24" O.C. COVERED ONE SIDE W/ ONE LAYER, 5/8" TYPE "X" GYPSUM BOARD, OPPOSITE SIDE COVERED W/ 1" GYPSUM PANELS, PER UL NO. U415A.
- 3A 2 HOUR FIRE-RATED SHAFT WALL
2 1/2" C-H STUDS AT 24" O.C. COVERED ONE SIDE W/ TWO LAYERS 5/8" TYPE "X" GYPSUM BOARD, OPPOSITE SIDE COVERED W/ 1" GYPSUM PANELS, PER UL NO. U415B.
- 2 HOUR FIRE-RATED BARRIER
8" CMU FROM FLOOR TO STRUCTURE ABOVE- SEAL TOP OF WALL WITH FIRE SAFING AT ROOF OR FLOOR DECK ABOVE PER UL NO. U905.
- TYPICAL PARTITION
5/8" GYP. BD. ON BOTH SIDES OF 3 5/8" METAL STUDS, @ 16" O.C., GYP. BD. TO STRUCTURE ABOVE.
- SAME AS (5) W/ 2" SOUND ATTENUATION BLANKETS
- NOT USED.
- CHASE WALL (WIDTH VARIES)
5/8" GYP.BD. ON ONE SIDE OF STAGGERED 3 5/8" METAL STUDS, @ 16" O.C., PROVIDE GYP.BD. ON EACH FINISH SIDE OF CHASE; GYP.BD. TO FIRE-RATED CEILING OR ROOF ASSEMBLY ABOVE.
- SAME AS (7) W/ 2" SOUND ATTENUATION BLANKETS IN BOTH LINES OF STUDS.
- 5/8" GYP.BD. ON BOTH SIDES OF 6" METAL STUDS
- 0 HOUR RATED PARTITION W/ SOUND RATING
1/4" BASE LAYER GYP.BD. W/ 5/8" GYP.BD. ON BOTH SIDES OF 2 1/2" METAL STUDS @ 24" O.C., W/ 1" SOUND INSULATION (STCS)
- LOW WALL PARTITION
5/8" GYP. BD. ON BOTH SIDES OF 3 5/8" METAL STUDS @ 16" O.C., TO HEIGHT OF COUNTER TOP

LEGEND:

- FEC = FIRE EXTINGUISHER CABINET
RWC = RAIN WATER CONDUCTOR AND OVERFLOW CONDUCTOR
--- = HANDRAIL LOCATED ON BOTH SIDES OF CORRIDOR, TYP.
== = FUTURE CONSTRUCTION
--- = EXISTING CONSTRUCTION TO REMAIN

BID DOCUMENTS FULLY SPRINKLERED

Revisions:		Date:		CONSULTANTS:		ARCHITECT/ENGINEERS:		Drawing Title		Project Title		Project Number		Office of Construction and Facilities Management	
								FLOOR PLAN - CONNECTOR		RELOCATE DEMENTIA UNIT		VA PN 613-107		Department of Veterans Affairs	
								Approved: Project Director		Location		Building Number			
										VAMC MARTINSBURG		513			
										Date		Checked		Drawn	
										8/6/2012		Checker		Author	
												Drawing Number		Dwg. of --	
												AE-103			