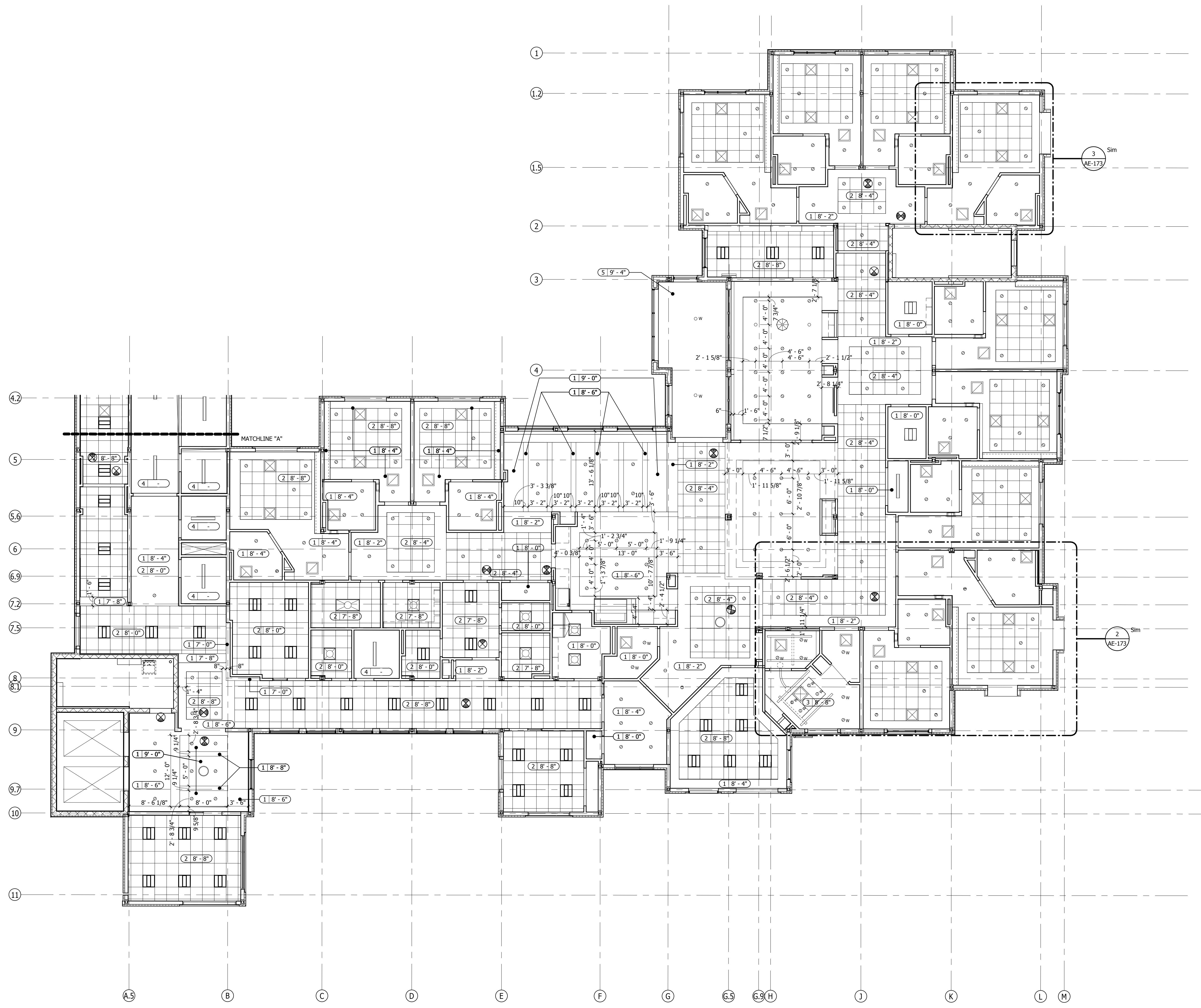


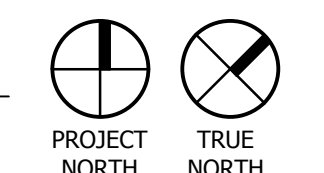
one and one half inches = one foot
one inch = one foot
three quarters inch = one foot
one half inch = one foot
one quarter inch = one foot
one eighth inch = one foot

A
B
C
D
E
F

1 2 3 4 5 6 7 8 9



1 SECOND FLOOR REFLECTED CEILING PLAN
SCALE 1/8" = 1'-0"



- GENERAL NOTES:**
- DIFFUSERS, SPEAKERS, ETC. THAT ARE A PART OF THE CEILING SYSTEM ARE TO BE PAINTED OR PREFINISHED TO MATCH GRID SYSTEM.
 - GYPSUM BOARD CEILING AND SOFFITS ARE TO BE PAINTED. VERTICAL SURFACES OF SOFFIT ARE TO RECEIVE FINISH TO MATCH ADJACENT CEILING (WHITE), UNLESS INDICATED OTHERWISE.
 - CENTER CEILING GRID SYSTEM IN SPACES, UNLESS INDICATED OTHERWISE.
 - COORDINATE DIFFUSER AND LIGHT FIXTURE LOCATIONS WITH MECHANICAL AND ELECTRICAL REQUIREMENTS. EXACT LOCATIONS SHOWN ON ARCHITECTURAL CEILING PLANS SHALL GOVERN. THE ARCHITECT IS TO BE NOTIFIED OF ANY DISCREPANCIES.
 - COORDINATE FIRE ALARM SIGNALING DEVICES, EXIT SIGNS, SMOKE DETECTORS, ETC. WITH ELECTRICAL DRAWINGS AND APPROVED SHOP DRAWINGS.
 - COORDINATE LOCATIONS OF SPRINKLER HEADS WITH APPROVED SHOP DRAWINGS. HEADS TO BE LOCATED IN THE CENTER OF A CEILING PANEL OF SCORED AREA OF PANEL IN SUSPENDED ACOUSTIC CEILING.
 - REFLECTED CEILING PLANS MAY NOT SHOW FULL EXTENT OF LIGHTING, MECHANICAL PENETRATIONS OR REQUIRED ACCESS PANELS. COORDINATE WITH MECHANICAL AND ELECTRICAL DRAWINGS FOR ANY ADDITIONAL INFORMATION.
 - PROVIDE SUPPORT AND REINFORCEMENT FOR PENDANT LIGHT FIXTURES AND CEILING FANS.
 - PROVIDE EXTERNAL WALL MOUNTED FIXTURE AT EXIT AREAS.

- CEILING TYPES:**
- Height) TYPE 1:
PAINTED GYPSUM BOARD, USE FIBER-REINFORCED WATER AND MOLD RESISTANT GYPSUM PANEL IN BATHING ROOMS, LOCKER ROOMS AND EXTERIOR STORAGE ROOMS.
 - Height) TYPE 2: AT-1
2' X 2' ACOUSTICAL PANEL CEILING SYSTEM WITH TEGULAR EDGE.
 - Height) TYPE 3: AT-2
2' X 4' MOISTURE RESISTANT ACOUSTICAL PANEL CEILING SYSTEM WITH TEGULAR EDGE.
 - Height) TYPE 4:
NO CEILING - EXTEND GYP. BD. TO BOTTOM OF DECK
 - Height) TYPE 5:
DIRECT-APPLIED EXTERIOR FINISH SYSTEM (DAFS) - VENTED

- CEILING LEGEND:**
- TYPE 1: GYPSUM BOARD
 - TYPE 2: ARMSTRONG ULTIMA 2' X 2', TEGULAR EDGE W/ 15/16" SUPRA FINE TEE GRID
 - TYPE 3: ARMSTRONG ULTIMA HIGH WASHABILITY 2' X 4' SQUARE EDGE W/ 15/16" SUPRA FINE TEE GRID
 - TYPE 4: EXPOSED STRUCTURE - PTD.
 - DECORATIVE FLOURESCENT PENDANT LIGHT FIXTURE
 - 6" RECESSED COMPACT FLOURESCENT DOWNLIGHT RATED FOR WET AREA
 - 6" RECESSED COMPACT FLOURESCENT DOWNLIGHT
 - 6" RECESSED COMPACT FLOURESCENT DIRECTIONAL DOWNLIGHT
 - LOW VOLTAGE STEM MOUNTED MINI PENDANT
 - INCANDESCENT WALL SCONCES
 - DECORATIVE FLOURESCENT WALL SCONCE MOUNTED OVER VANITY IN RESIDENT BATHROOM
 - DIRECT/INDIRECT LINEAR FLOURESCENT PENDANT
 - CEILING MOUNTED LINEAR FIXTURE
 - WALL MOUNTED LINEAR FIXTURE
 - 2X2 RECESSED FLOURESCENT LIGHT FIXTURE WITH PARABOLIC LENS
 - 2X4 RECESSED FLOURESCENT LIGHT FIXTURE WITH PARABOLIC LENS
 - 2X2 RECESSED DIRECT/INDIRECT FLOURESCENT LIGHT FIXTURE WITH PARABOLIC LENS
 - DECORATIVE INCANDESCENT PENDANT LIGHT FIXTURE
 - SUPPLY AIR DIFFUSER
 - RETURN AIR DIFFUSER
 - EXHAUST FAN
 - CONTINUOUS LED STRIP LIGHTING WITHIN COVE
 - RECESSED LIFT TRACK OCCURS IN ROOMS (102, 104, 106, 108, 110, AND 202)
 - EXIT SIGN

**BID DOCUMENTS
FULLY SPRINKLERED**

Office of
Construction
and Facilities
Management

Department of
Veterans Affairs

Revisions:		Date:		CONSULTANTS:				ARCHITECT/ENGINEERS:		Drawing Title: REFLECTED CEILING PLAN - 2ND FLOOR		Project Number: VA PN 613-107		Project Title: RELOCATE DEMENTIA UNIT	
										Approved: Project Director		Location: VAMC MARTINSBURG		Building Number: 513	
												Date: 8/6/2012		Checked: Checker	
														Drawn: Author	
														Dwg. of --	