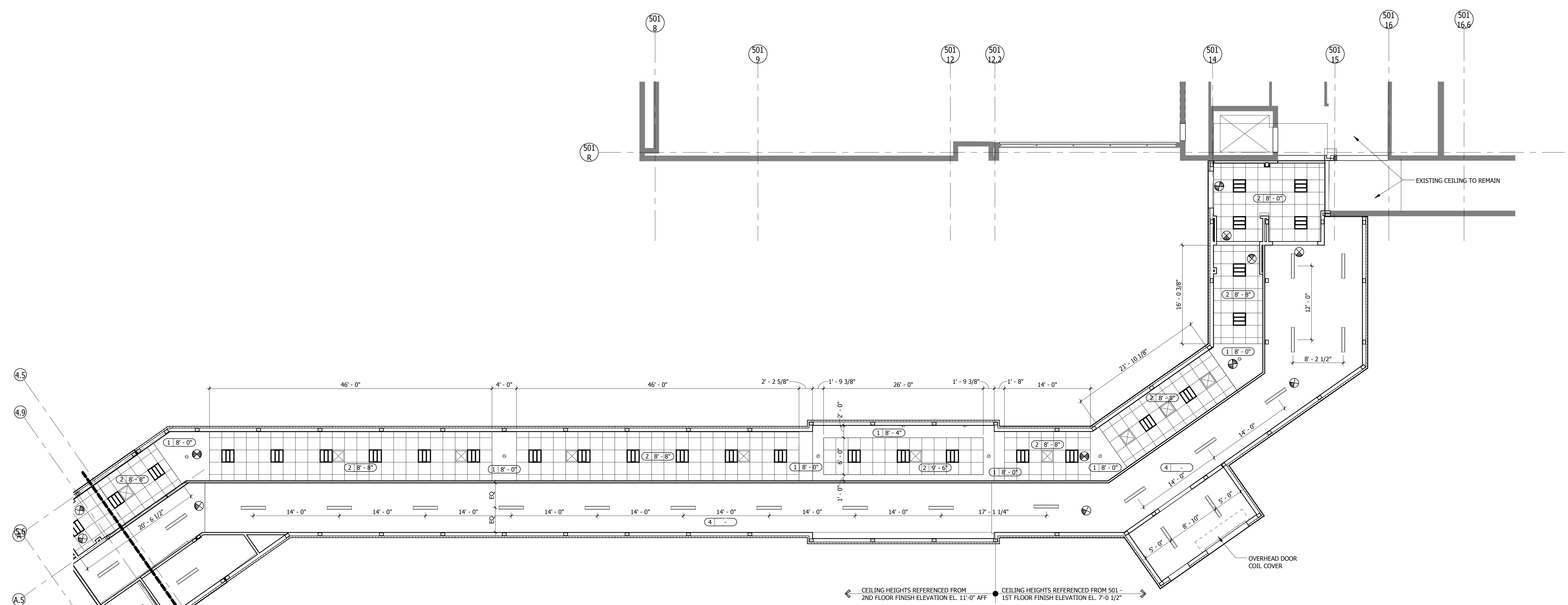
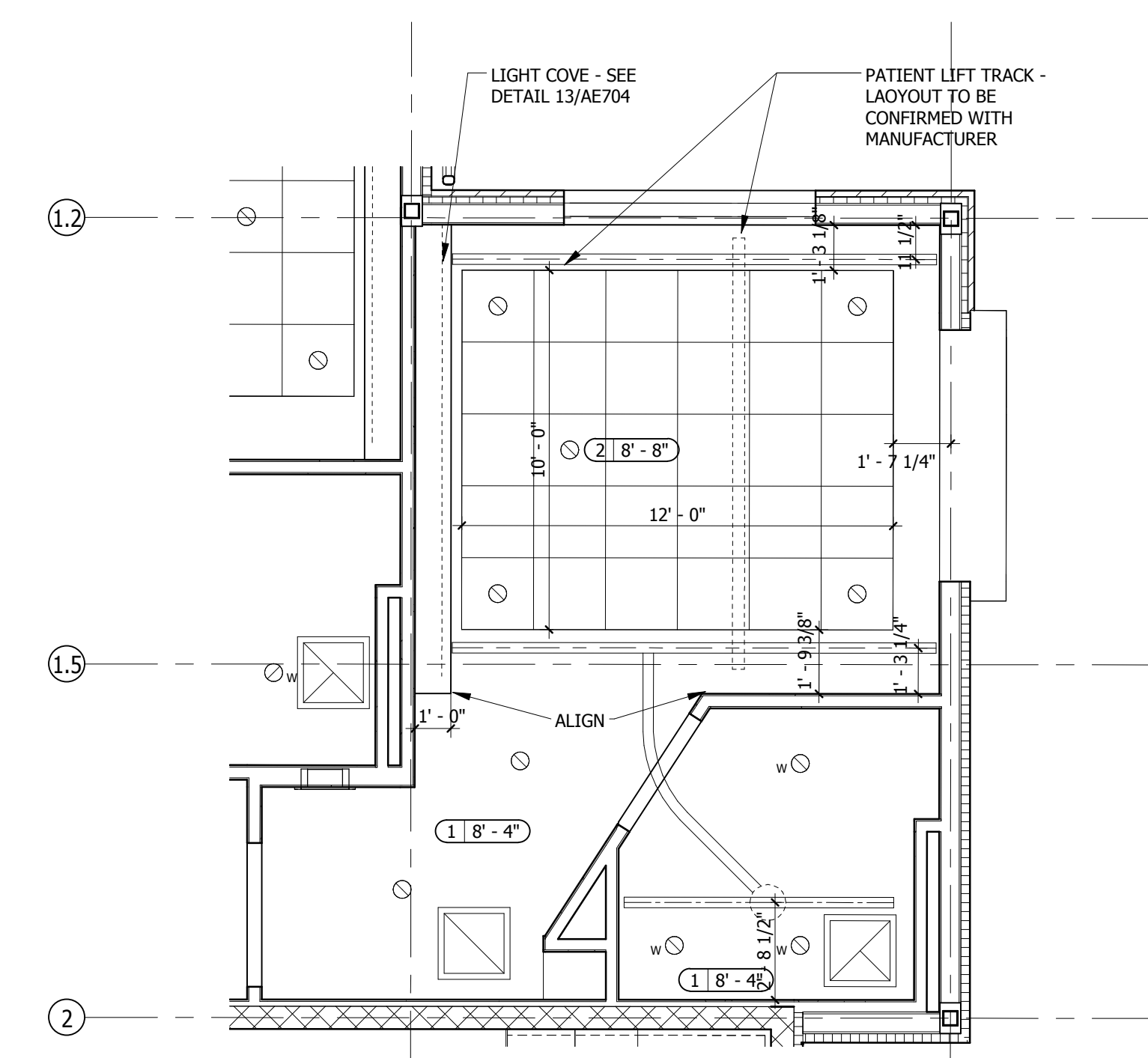
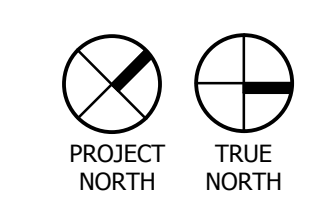


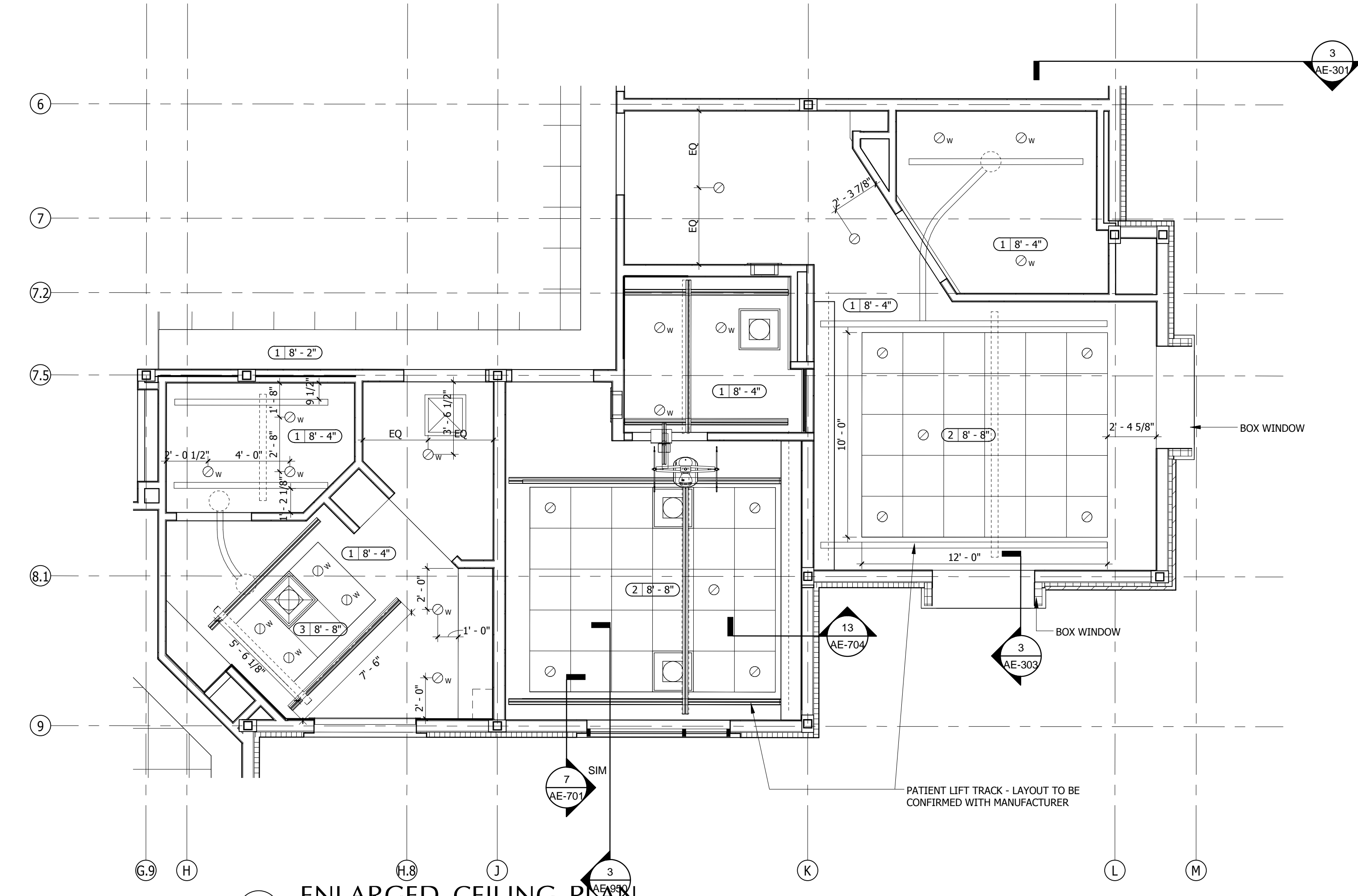
one and one half inches = one foot  
one inch = one foot  
three quarters inch = one foot  
one half inch = one foot  
one quarter inch = one foot  
one eighth inch = one foot



1 REFLECTED CEILING PLAN - CONNECTOR  
SCALE 1/8" = 1'-0"



3 ENLARGED CEILING PLAN - CORNER UNIT  
SCALE 1/4" = 1'-0"



2 ENLARGED CEILING PLAN  
SCALE 1/4" = 1'-0"

- GENERAL NOTES:**
- A. DIFFUSERS, SPEAKERS, ETC. THAT ARE A PART OF THE CEILING SYSTEM ARE TO BE PAINTED OR PREFINISHED TO MATCH GRID SYSTEM.
  - B. GYPSUM BOARD CEILING AND SOFFITS ARE TO BE PAINTED. VERTICAL SURFACES OF SOFFIT ARE TO RECEIVE FINISH TO MATCH ADJACENT CEILING (WHITE), UNLESS INDICATED OTHERWISE.
  - C. CENTER CEILING GRID SYSTEM IN SPACES, UNLESS INDICATED OTHERWISE.
  - D. COORDINATE DIFFUSER AND LIGHT FIXTURE LOCATIONS WITH MECHANICAL AND ELECTRICAL REQUIREMENTS. EXACT LOCATIONS SHOWN ON ARCHITECTURAL CEILING PLANS SHALL GOVERN. THE ARCHITECT IS TO BE NOTIFIED OF ANY DISCREPANCIES.
  - E. COORDINATE FIRE ALARM SIGNALING DEVICES, EXIT SIGNS, SMOKE DETECTORS, ETC. WITH ELECTRICAL DRAWINGS AND APPROVED SHOP DRAWINGS.
  - F. COORDINATE LOCATIONS OF SPRINKLER HEADS WITH APPROVED SHOP DRAWINGS. HEADS TO BE LOCATED IN THE CENTER OF A CEILING PANEL OF SCORED AREA OF PANEL IN SUSPENDED ACOUSTIC CEILING.
  - G. REFLECTED CEILING PLANS MAY NOT SHOW FULL EXTENT OF LIGHTING, MECHANICAL PENETRATIONS OR REQUIRED ACCESS PANELS. COORDINATE WITH MECHANICAL AND ELECTRICAL DRAWINGS FOR ANY ADDITIONAL INFORMATION.
  - H. PROVIDE SUPPORT AND REINFORCEMENT FOR PENDANT LIGHT FIXTURES AND CEILING FANS.
  - I. PROVIDE EXTERNAL WALL MOUNTED FIXTURE AT EXIT AREAS.

- CEILING TYPES:**
- 1 Height TYPE 1: PAINTED GYPSUM BOARD. USE FIBER-REINFORCED WATER AND MOLD RESISTANT GYPSUM PANEL IN BATHING ROOMS, LOCKER ROOMS AND EXTERIOR STORAGE ROOMS.
  - 2 Height TYPE 2: AT-1 2' X 2' ACOUSTICAL PANEL CEILING SYSTEM WITH TEGULAR EDGE.
  - 3 Height TYPE 3: AT-2 2' X 4' MOISTURE RESISTANT ACOUSTICAL PANEL CEILING SYSTEM WITH TEGULAR EDGE.
  - 4 Height TYPE 4: NO CEILING - EXTEND GYP. BD. TO BOTTOM OF DECK
  - 5 Height TYPE 5: DIRECT-APPLIED EXTERIOR FINISH SYSTEM (DAFS) - VENTED

- CEILING LEGEND:**
- TYPE 1: GYPSUM BOARD
  - TYPE 2: ARMSTRONG ULTIMA 2' X 2', TEGULAR EDGE W/ 15/16" SUPRA FINE TEE GRID
  - TYPE 3: ARMSTRONG ULTIMA HIGH WASHABILITY 2' X 4' SQUARE EDGE W/ 15/16" SUPRA FINE TEE GRID
  - TYPE 4: EXPOSED STRUCTURE - PTD.
  - DECORATIVE FLOURESCENT PENDANT LIGHT FIXTURE
  - 6" RECESSED COMPACT FLOURESCENT DOWNLIGHT RATED FOR WET AREA
  - 6" RECESSED COMPACT FLOURESCENT DOWNLIGHT
  - 6" RECESSED COMPACT FLOURESCENT DIRECTIONAL DOWNLIGHT
  - LOW VOLTAGE STEM MOUNTED MINI PENDANT
  - INCANDESCENT WALL SCONCES
  - DECORATIVE FLOURESCENT WALL SCONCE MOUNTED OVER VANITY IN RESIDENT BATHROOM
  - DIRECT/INDIRECT LINEAR FLOURESCENT PENDANT
  - CEILING MOUNTED LINEAR FIXTURE
  - WALL MOUNTED LINEAR FIXTURE
  - 2X2 RECESSED FLOURESCENT LIGHT FIXTURE WITH PARABOLIC LENS
  - 2X4 RECESSED FLOURESCENT LIGHT FIXTURE WITH PARABOLIC LENS
  - 2X2 RECESSED DIRECT/INDIRECT FLOURESCENT LIGHT FIXTURE WITH PARABOLIC LENS
  - DECORATIVE INCANDESCENT PENDANT LIGHT FIXTURE
  - SUPPLY AIR DIFFUSER
  - RETURN AIR DIFFUSER
  - EXHAUST FAN
  - CONTINUOUS LED STRIP LIGHTING WITHIN COVE
  - RECESSED LIFT TRACK OCCURS IN ROOMS (102, 104, 106, 108, 110, AND 202)
  - EXIT SIGN

BID DOCUMENTS  
FULLY SPRINKLERED

CONSULTANTS:		ARCHITECT/ENGINEERS:		Drawing Title REFLECTED CEILING PLAN - LINK		Project Title RELOCATE DEMENTIA UNIT		Project Number VA PN 613-107		Office of Construction and Facilities Management  Department of Veterans Affairs	
		C.C. HODGSON ARCHITECTURAL GROUP P.C.		Approved: Project Director		Location VAMC MARTINSBURG		Building Number 513			
Revisions:						Date 8/6/2012		Checked Author			
Date								Drawn		Dwg. of --	