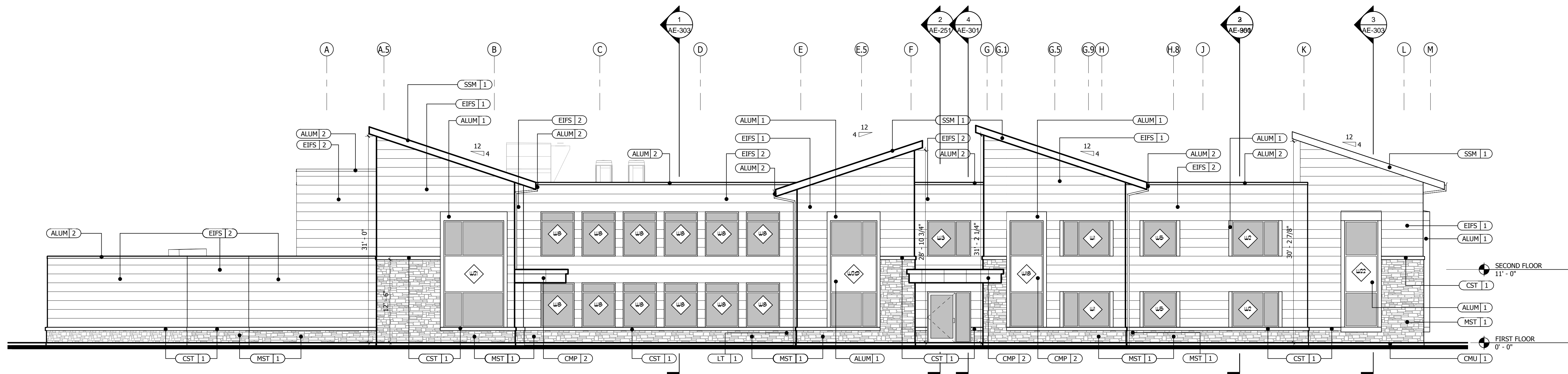
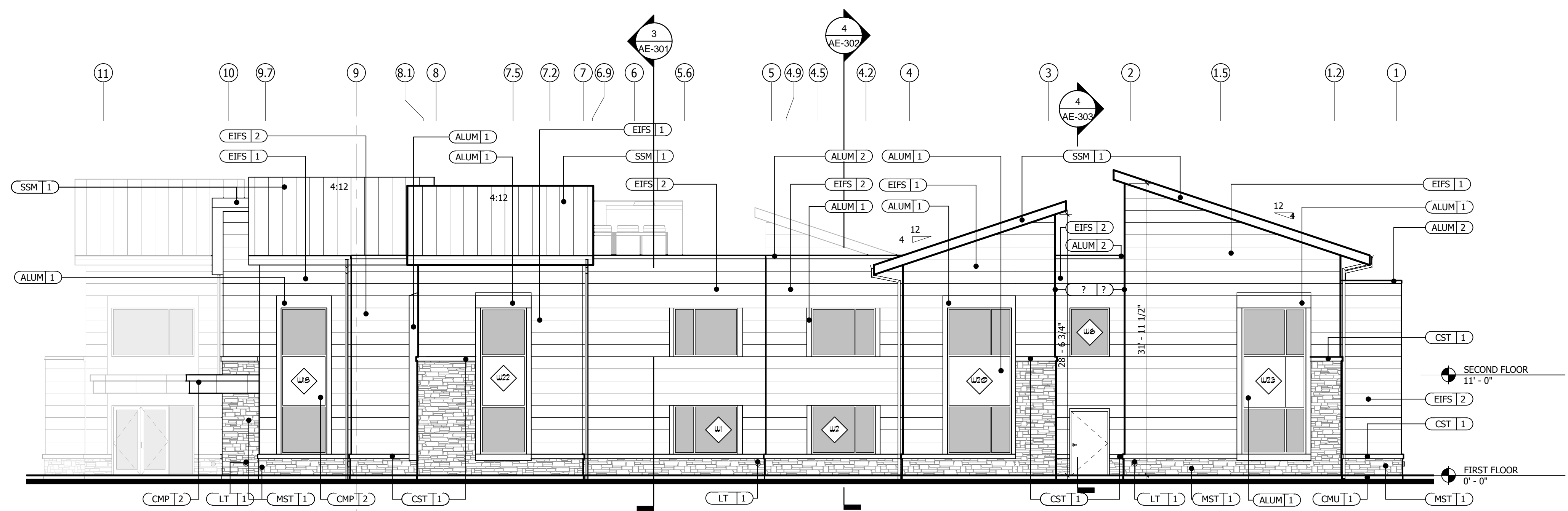


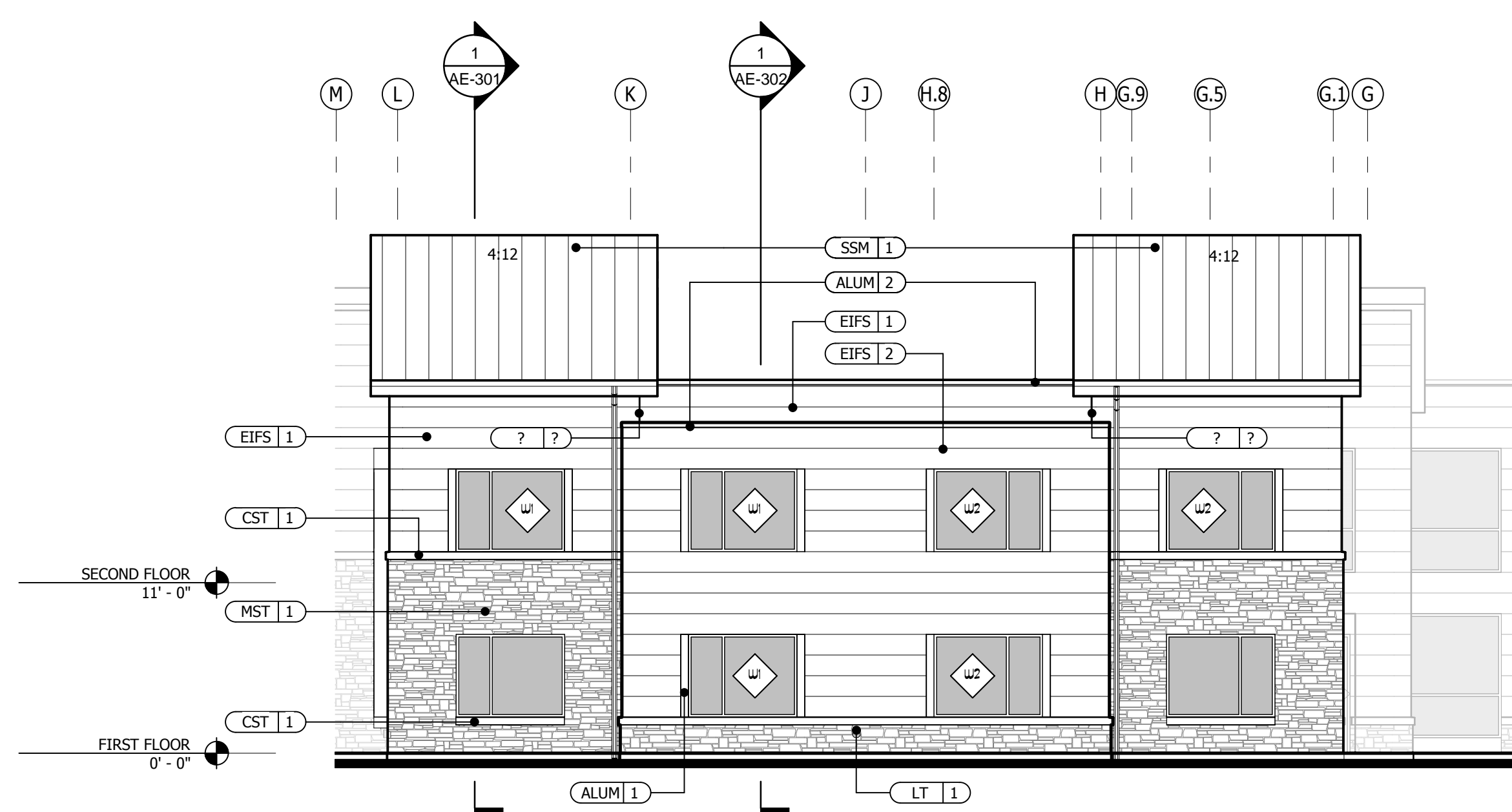
one and one half inches = one foot
one inch = one foot
three quarters inch = one foot
one half inch = one foot
one quarter inch = one foot
one eighth inch = one foot



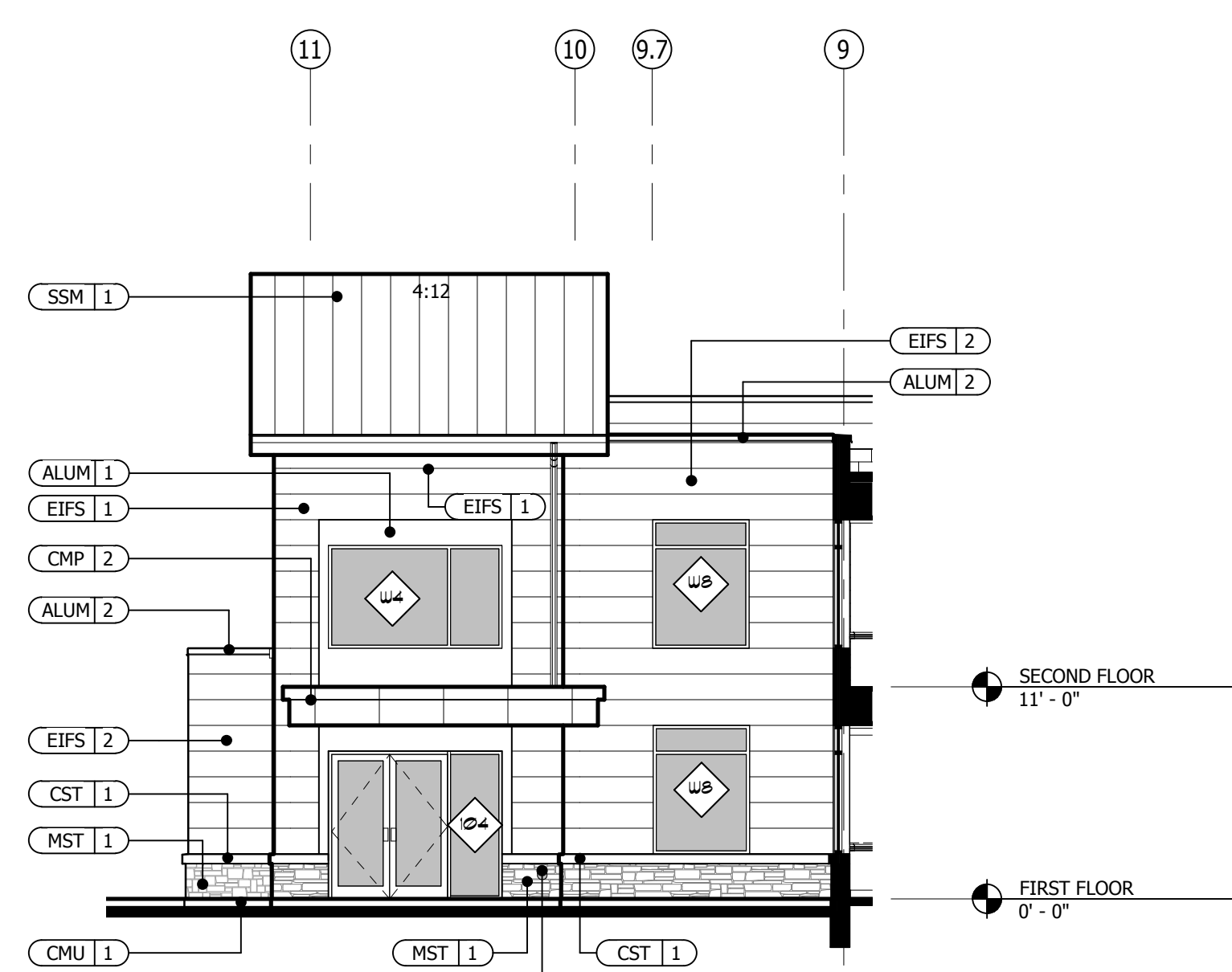
1 SOUTH ELEVATION
SCALE 1/8" = 1'-0"



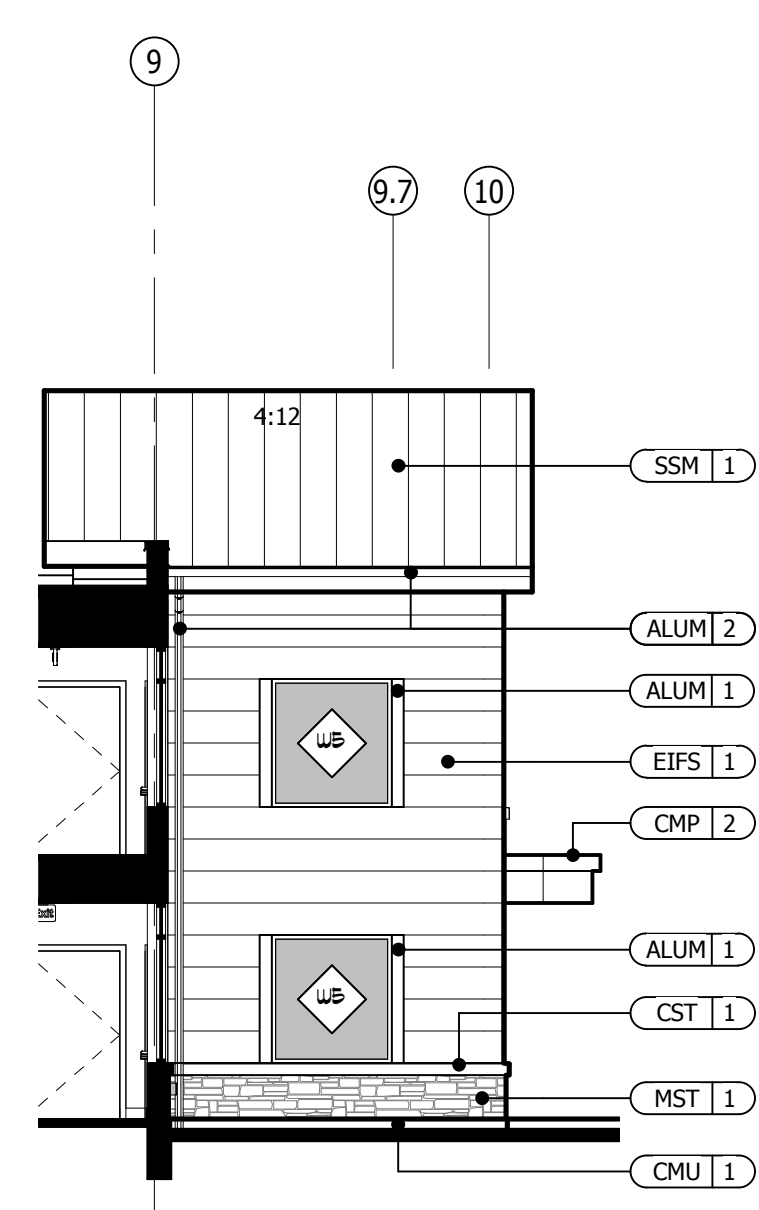
2 EAST ELEVATION
SCALE 1/8" = 1'-0"



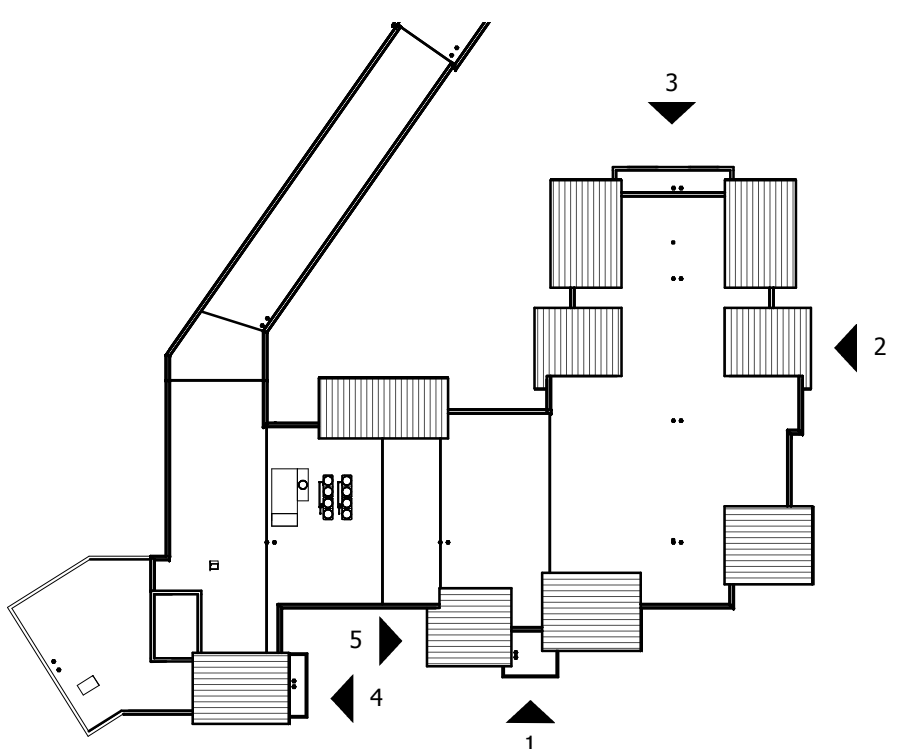
3 NORTH ELEVATION
SCALE 1/8" = 1'-0"



4 EAST ELEVATION - MAIN ENTRY
SCALE 1/8" = 1'-0"



5 WEST ELEVATION
SCALE 1/8" = 1'-0"



KEY PLAN

GENERAL NOTES:

- TOP OF SLAB / MAIN FLOOR LEVEL IS ELEVATION 0'-0".
- FINISH GRADE SHOWN ON THESE DRAWINGS IS APPROXIMATE. REFER TO CIVIL ENGINEERING AND LANDSCAPE DRAWINGS FOR GRADING, WALKS, DRIVES AND RETAINING WALLS.
- REFER TO WINDOW AND DOOR SCHEDULES (DRAWING AE-500) FOR TYPES AND SIZES.
- REFER TO SPECIFICATIONS SECTION 09 06 00 SCHEDULE FOR FINISHES FOR COLOR SELECTIONS.
- HORIZONTAL LINES IN EIPS TO BE 1" REVEAL SPACED 16" o.c. VERTICALLY, REFER TO ELEVATIONS FOR ALIGNMENT WITH WINDOWS AND WATERTABLE.

EXTERIOR MATERIALS

- CMU - 1**
GROUND FACE BLOCK BASE
- MST - 1**
MANUFACTURED STONE MASONRY VENEER
- CST - 1**
CAST STONE SILL / WATERTABLE
- EIPS - 1**
DRAINABLE EIPS
- EIPS - 2**
DRAINABLE EIPS
- CMP - 1**
COMPOSITE METAL PANELS
- CMP - 2**
COMPOSITE METAL PANELS (INSULATED)
- SSM - 1**
ALUMINUM PRE-FINISHED STANDING SEAM METAL ROOF AND METAL FASCIA
- ALUM - 1**
ALUMINUM BREAK METAL WINDOW TRIM
- ALUM - 2**
ALUMINUM PRE-FINISHED METAL COPING
- ALUM - 3**
METAL CONDUCTOR HEADS, SCUPPERS & DOWNSPOUTS
- LVR - 1**
MECHANICAL LOUVER WITH SCREEN
- PT - 1**
EXTERIOR PAINT
- PT - 2**
EXTERIOR PAINT
- EJ - 1**
EIPS EXPANSION JOINT - 1/2"
- EJ - 2**
BUILDING EXPANSION JOINT - 1"
- LT - 1**
LAMBS TONGUE

BID DOCUMENTS FULLY SPRINKLERED

CONSULTANTS:		ARCHITECT/ENGINEERS:		Drawing Title HOUSEHOLD ELEVATIONS		Project Title RELOCATE DEMENTIA UNIT		Project Number VA PN 613-107		Office of Construction and Facilities Management Department of Veterans Affairs	
				Approved: Project Director		Location VAMC MARTINSBURG		Building Number 513			
						Date 8/6/2012		Checked Author			
Revisions:								Drawing Number AE-201		Dwg. of --	