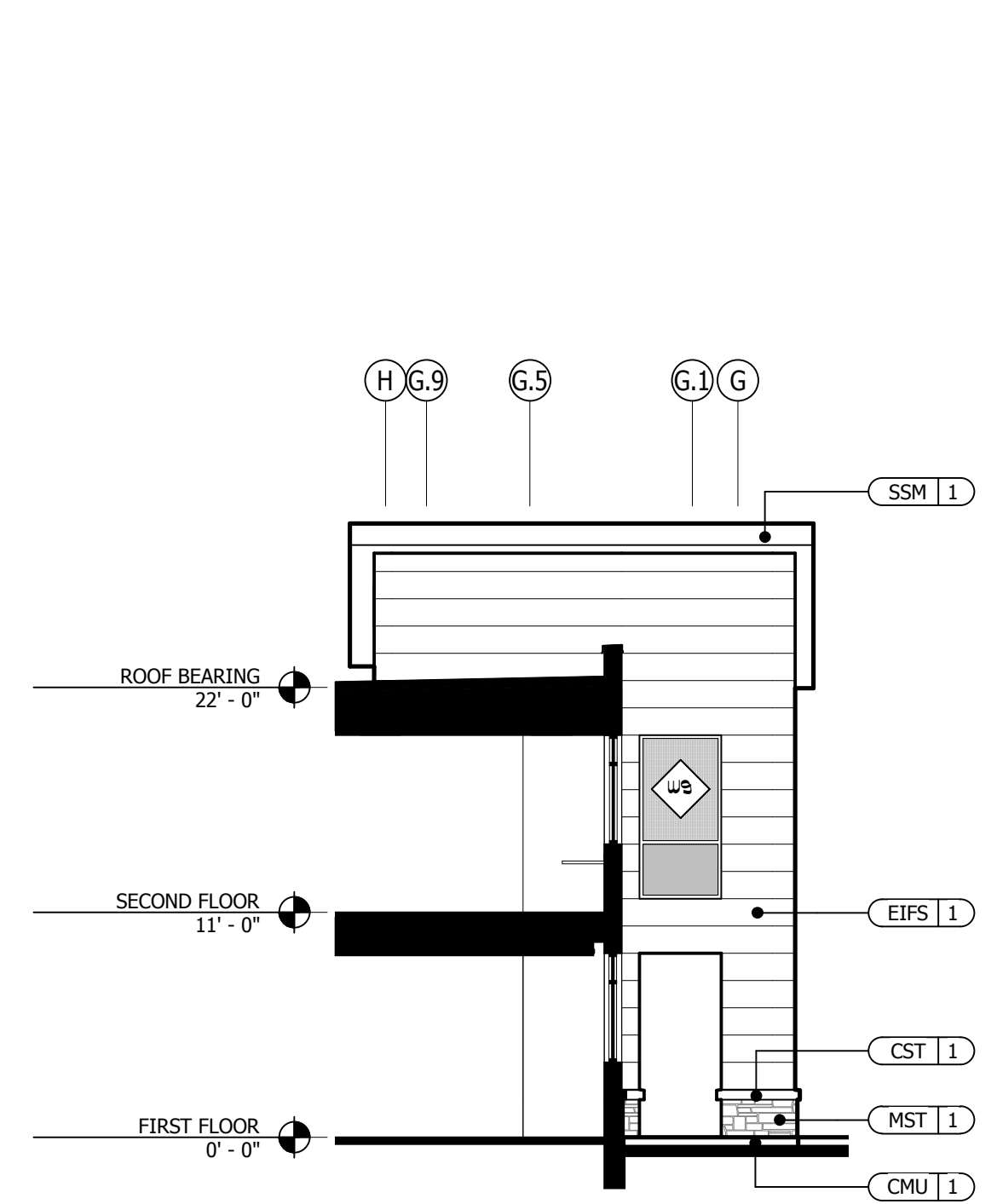
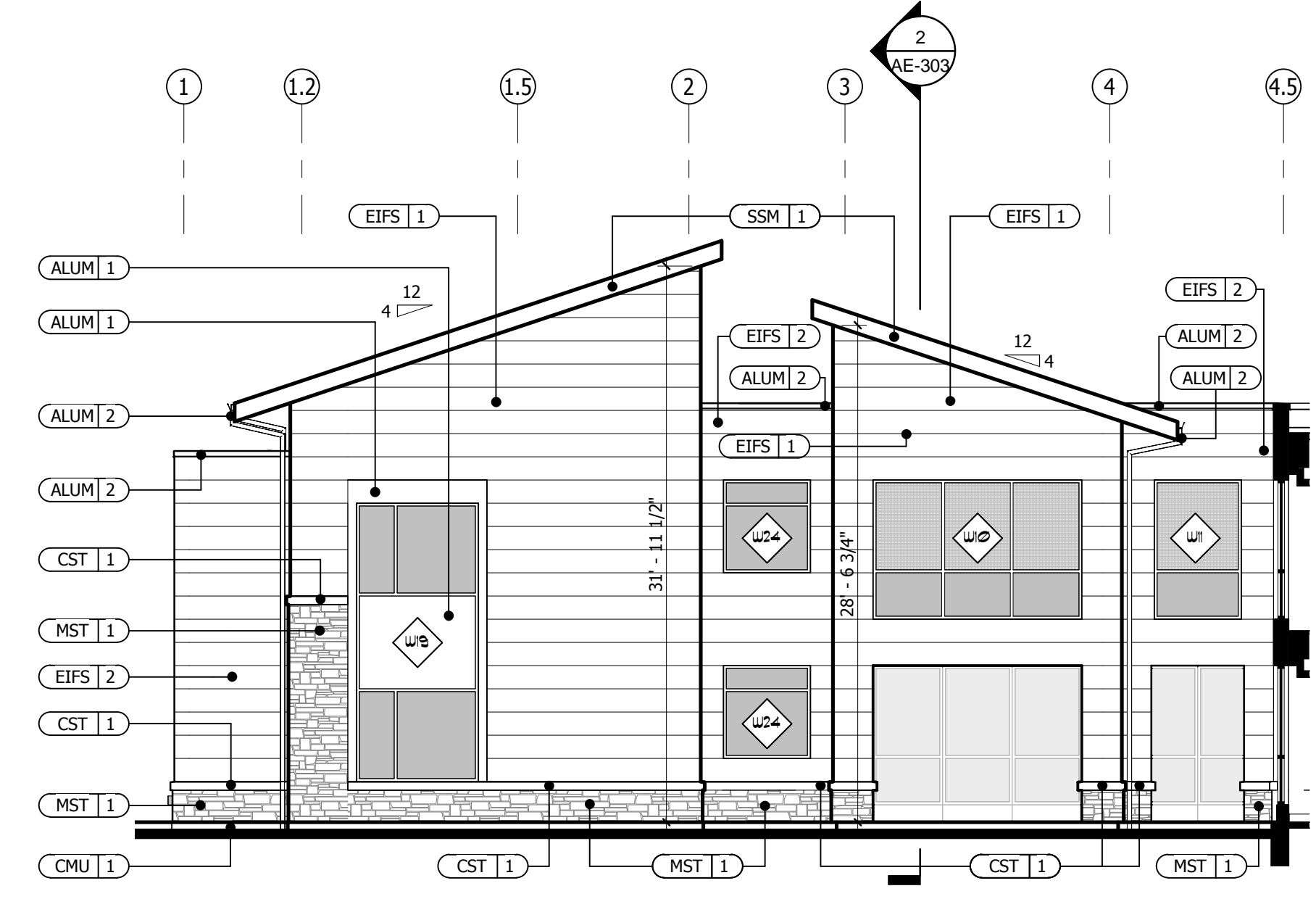


one and one half inches = one foot
one inch = one foot
three quarters inch = one foot
one quarter inch = one foot
one eighth inch = one foot

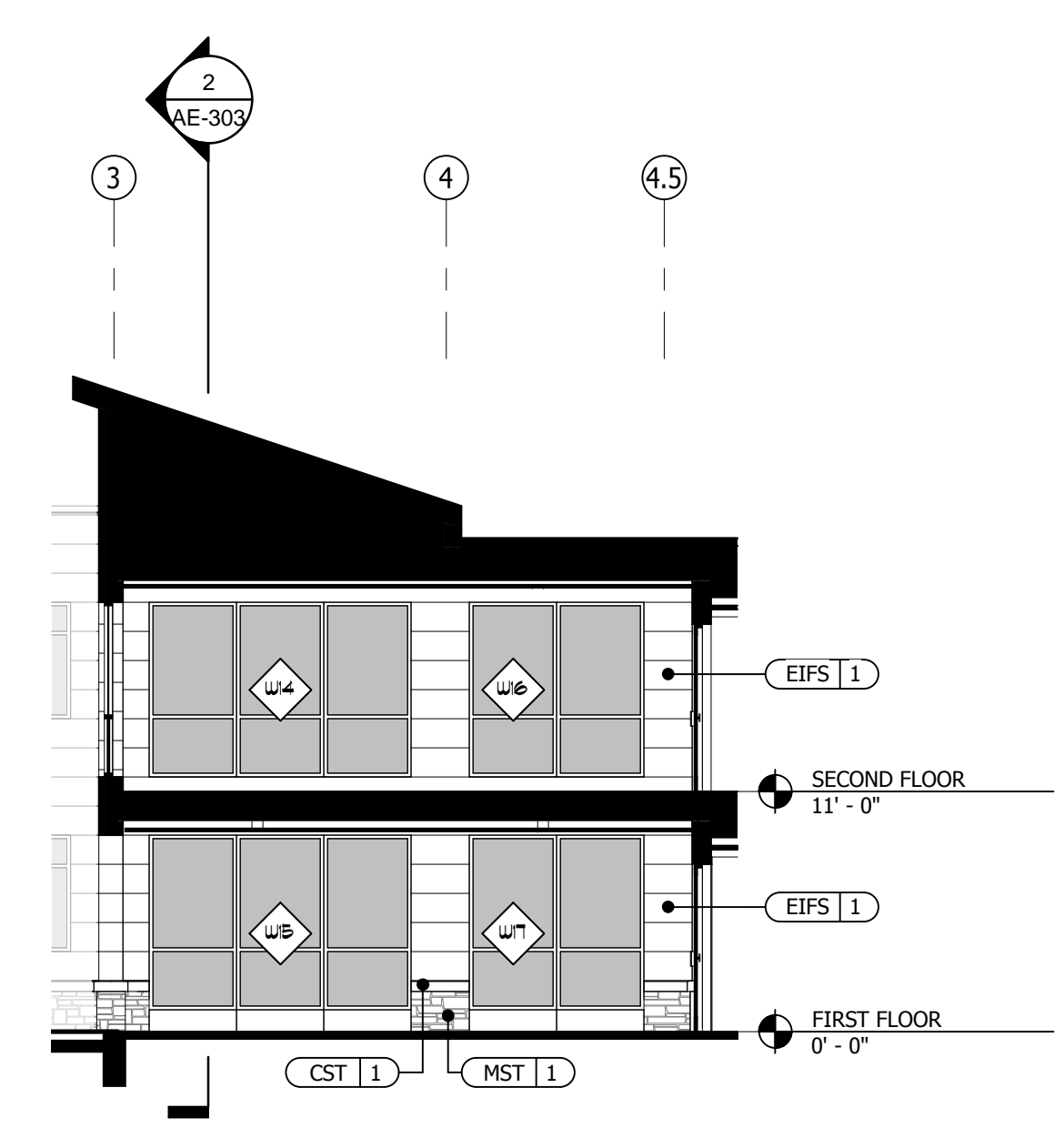
1 NORTH ELEVATION - COURTYARD
SCALE 1/8" = 1'-0"



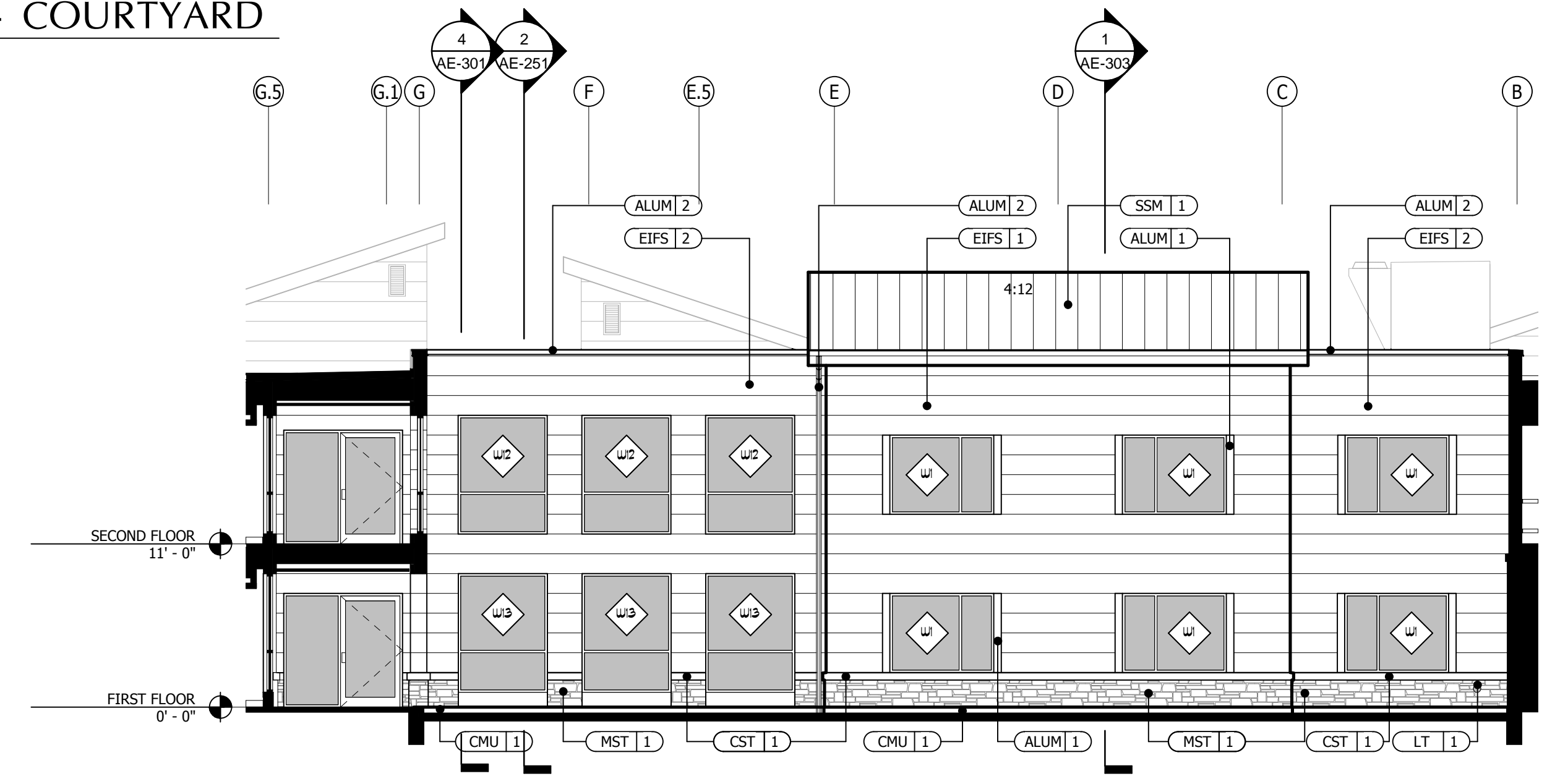
2 WEST ELEVATION - COURTYARD
SCALE 1/8" = 1'-0"



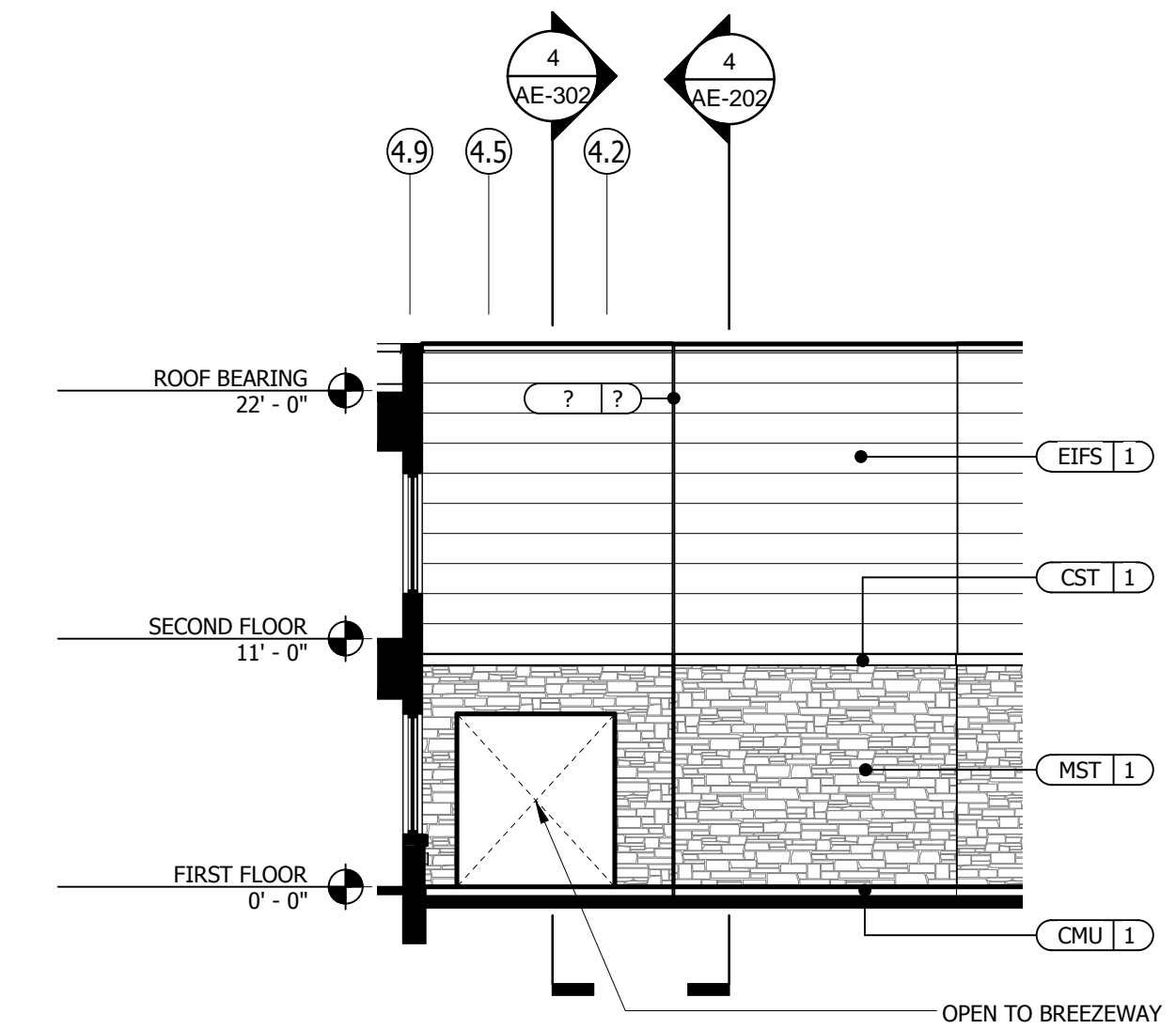
3 WEST ELEVATION - COURTYARD
SCALE 1/8" = 1'-0"



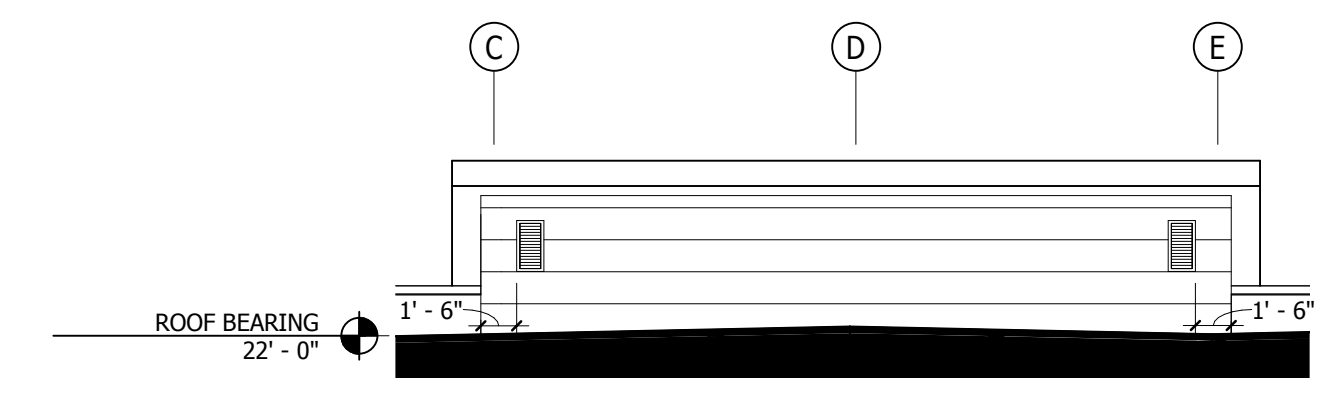
4 NORTH ELEVATION - COURTYARD
SCALE 1/8" = 1'-0"



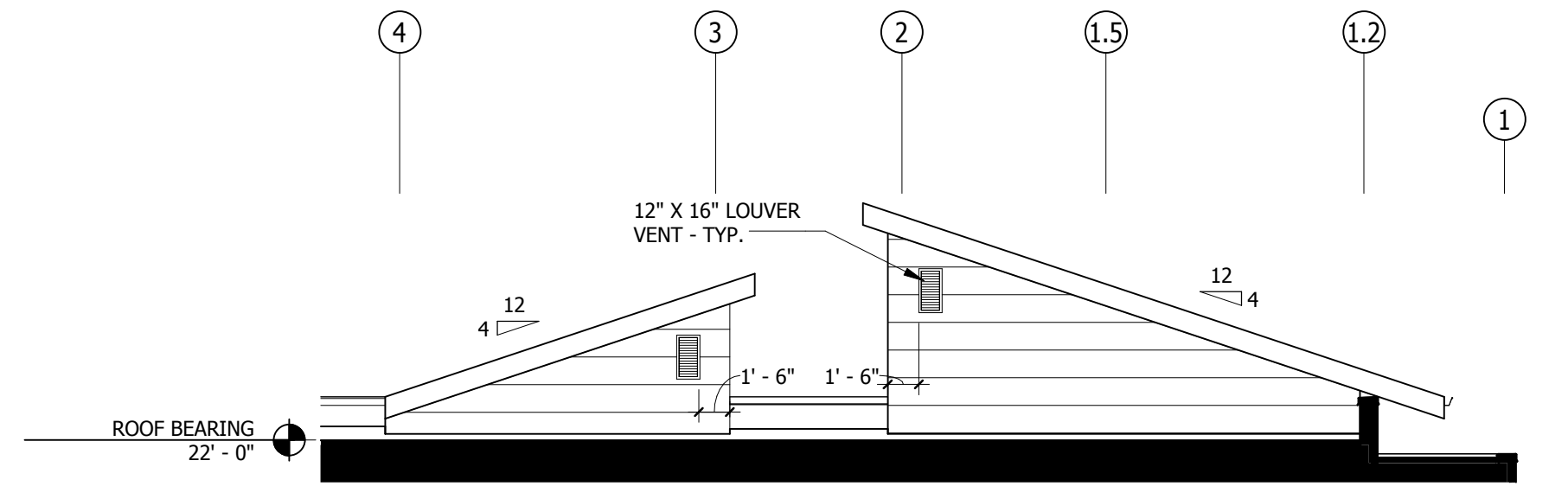
5 EAST ELEVATION - COURTYARD
SCALE 1/8" = 1'-0"



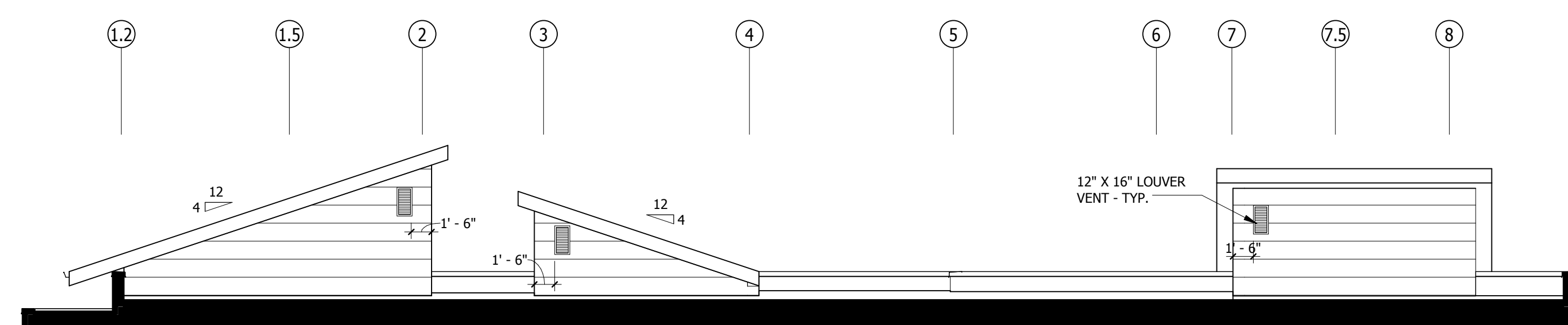
9 ROOF OVER BUILD ELEVATION
SCALE 1/8" = 1'-0"



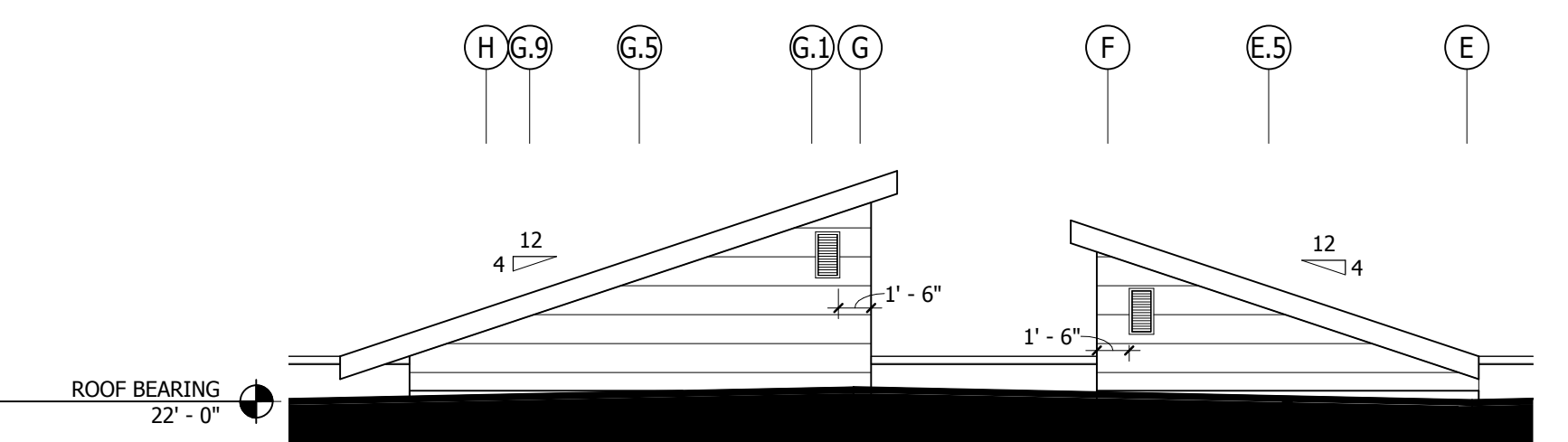
6 ROOF OVER BUILD ELEVATION
SCALE 1/8" = 1'-0"



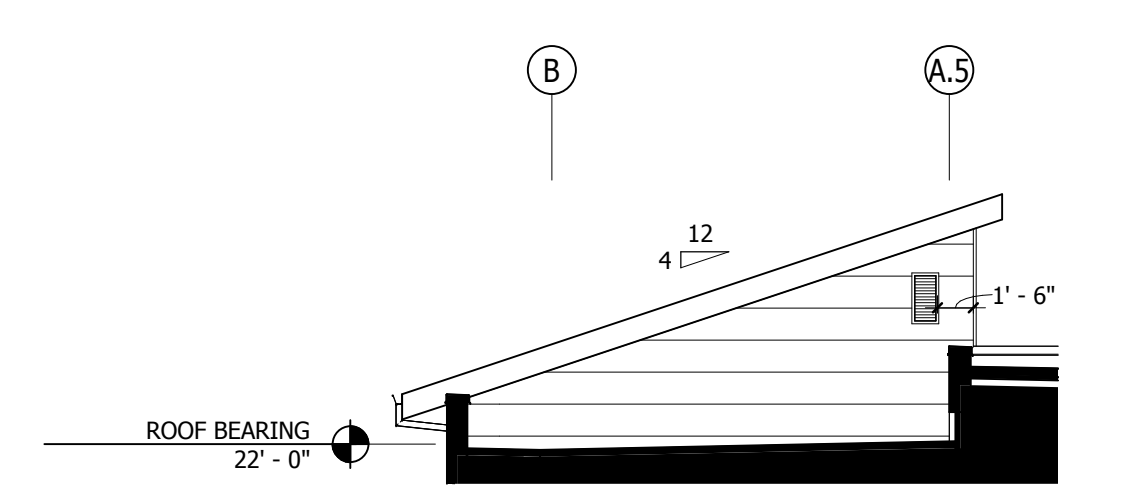
10 ROOF OVER BUILD ELEVATION
SCALE 1/8" = 1'-0"



7 ROOF OVER BUILD ELEVATION
SCALE 1/8" = 1'-0"



8 ROOF OVER BUILD ELEVATION
SCALE 1/8" = 1'-0"

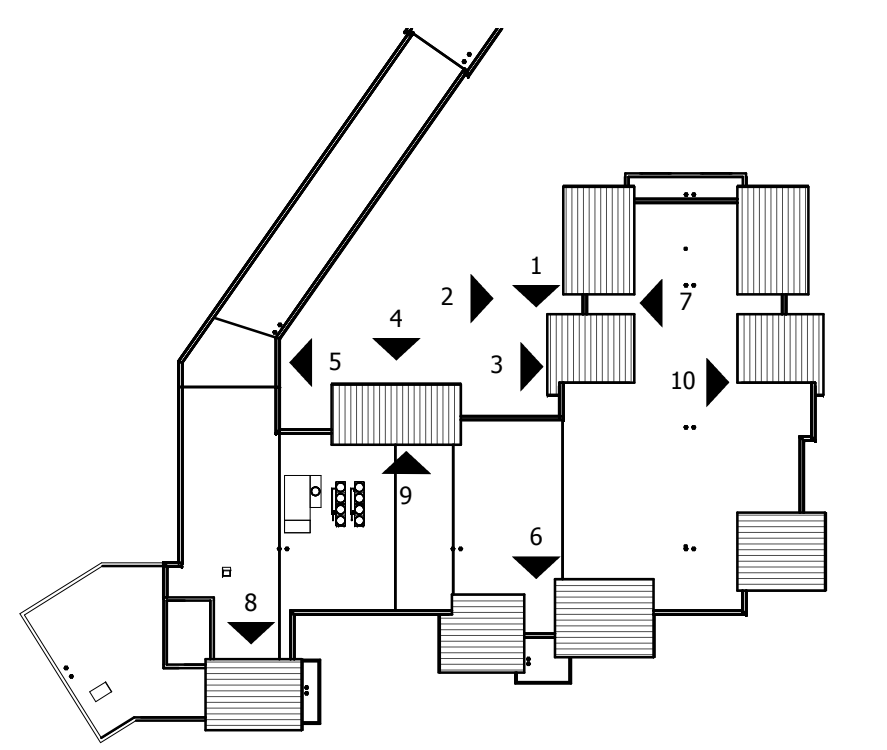


GENERAL NOTES:

- A. TOP OF SLAB / MAIN FLOOR LEVEL IS ELEVATION 0'-0".
- B. FINISH GRADE SHOWN ON THESE DRAWINGS IS APPROXIMATE. REFER TO CIVIL ENGINEERING AND LANDSCAPE DRAWINGS FOR GRADING, WALKS, DRIVES AND RETAINING WALLS.
- C. REFER TO WINDOW AND DOOR SCHEDULES (DRAWING AE-500s) FOR TYPES AND SIZES.
- D. REFER TO SPECIFICATIONS SECTION 09 06 00 SCHEDULE FOR FINISHES FOR COLOR SELECTIONS.
- E. HORIZONTAL LINES IN EIFS TO BE 1" REVEAL SPACED 16" o.c. VERTICALLY. REFER TO ELEVATIONS FOR ALIGNMENT WITH WINDOWS AND WATERTABLE.

EXTERIOR MATERIALS

- CMU - 1
GROUND FACE BLOCK BASE
- MST - 1
MANUFACTURED STONE MASONRY VENEER
- CST - 1
CAST STONE SILL / WATERTABLE
- EIFS - 1
DRAINABLE EIFS
- EIFS - 2
DRAINABLE EIFS
- CMP - 1
COMPOSITE METAL PANELS
- CMP - 2
COMPOSITE METAL PANELS (INSULATED)
- SSM - 1
ALUMINUM PRE-FINISHED STANDING SEAM METAL ROOF AND METAL FASCIA
- ALUM - 1
ALUMINUM BREAK METAL WINDOW TRIM
- ALUM - 2
ALUMINUM PRE-FINISHED METAL COPING
- ALUM - 3
METAL CONDUCTOR HEADS, SCUPPERS & DOWNSPOUTS
- LVR - 1
MECHANICAL LOUVER WITH SCREEN
- PT - 1
EXTERIOR PAINT
- PT - 2
EXTERIOR PAINT
- EJ - 1
EIFS EXPANSION JOINT - 1/2"
- EJ - 2
BUILDING EXPANSION JOINT - 1"
- LT - 1
LAMBS TONGUE



KEY PLAN

BID DOCUMENTS
FULLY SPRINKLERED

| | | | | | | | | | | | | | | | |
|------------|--|-------|--|--------------|--|--|--|---------------------------------------|--|---|--|---------------------------------|--|--|--|
| Revisions: | | Date: | | CONSULTANTS: | | ARCHITECT/ENGINEERS: C.C. HODGSON ARCHITECTURAL GROUP P.C. | | Drawing Title COURTYARD ELEVATIONS | | Project Title RELOCATE DEMENTIA UNIT | | Project Number VA PN 613-107 | | Office of Construction and Facilities Management Department of Veterans Affairs | |
| | | | | | | | | Approved: Project Director | | Location VAMC MARTINSBURG | | Building Number 513 | | | |
| | | | | | | | | | | Date 8/6/2012 | | Checked Checker | | | |
| | | | | | | | | | | | | Drawing Number AE-202 | | Dwg. of -- | |