

1
0
6"
one and one half inches = one foot

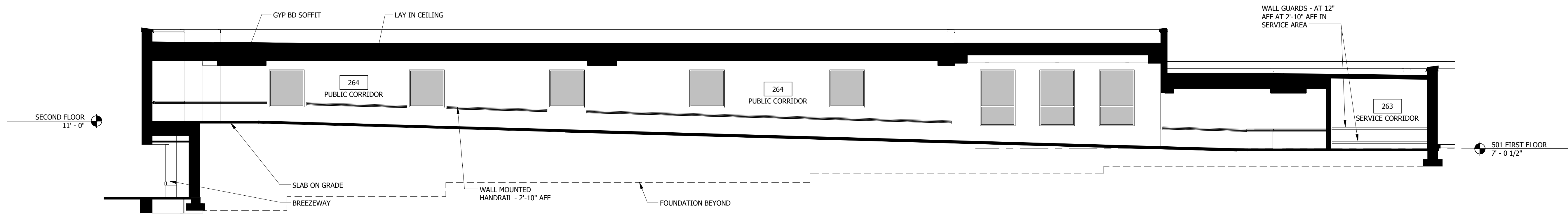
2
0
6"
one inch = one foot

3
0
6"
three quarters inch = one foot

4
0
6"
one half inch = one foot

5
0
4"
one quarter inch = one foot

6
0
15
one eighth inch = one foot





1 CONNECTOR SECTION
SCALE 1/8" = 1'-0"



2 BUILDING SECTION
SCALE 1/4" = 1'-0"

GENERAL NOTES:

BID DOCUMENTS
FULLY SPRINKLERED

<div>Revisions:</div> <table><tr><td></td><td>Date</td></tr><tr><td></td><td></td></tr><tr><td></td><td></td></tr><tr><td></td><td></td></tr><tr><td></td><td></td></tr><tr><td></td><td></td></tr></table>		Date											CONSULTANTS:	<div></div>	ARCHITECT/ENGINEERS:	Drawing Title BUILDING SECTIONS		Project Title RELOCATE DEMENTIA UNIT		Project Number VA PN 613-107		<div>Office of Construction and Facilities Management</div> <div> Department of Veterans Affairs</div>
		Date																				
				Approved: Project Director		Location VAMC MARTINSBURG		Building Number 513														
				Date 8/6/2012		Checked Checker	Drawn Author	Drawing Number AE-251														
								Dwg. of --														