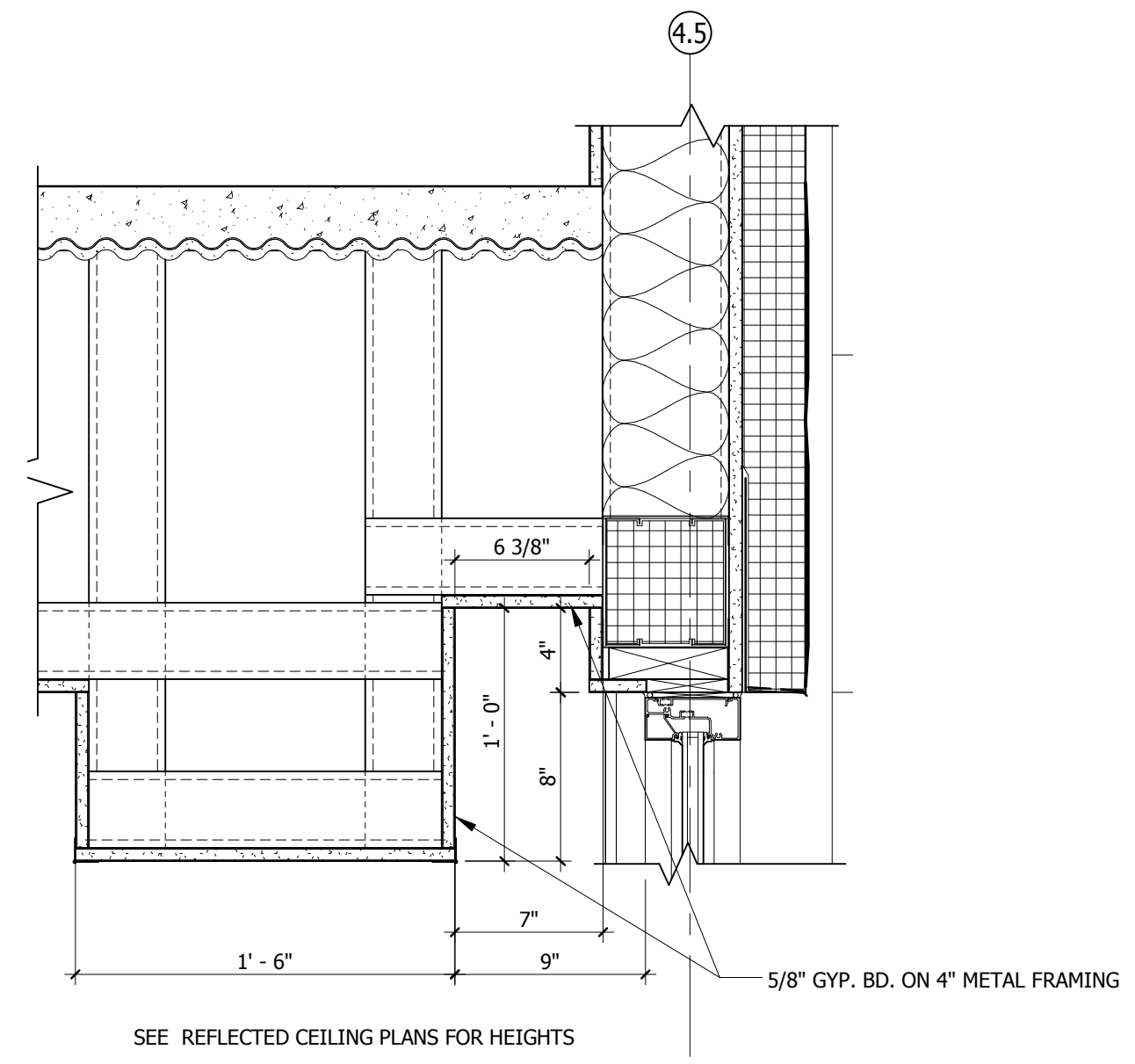
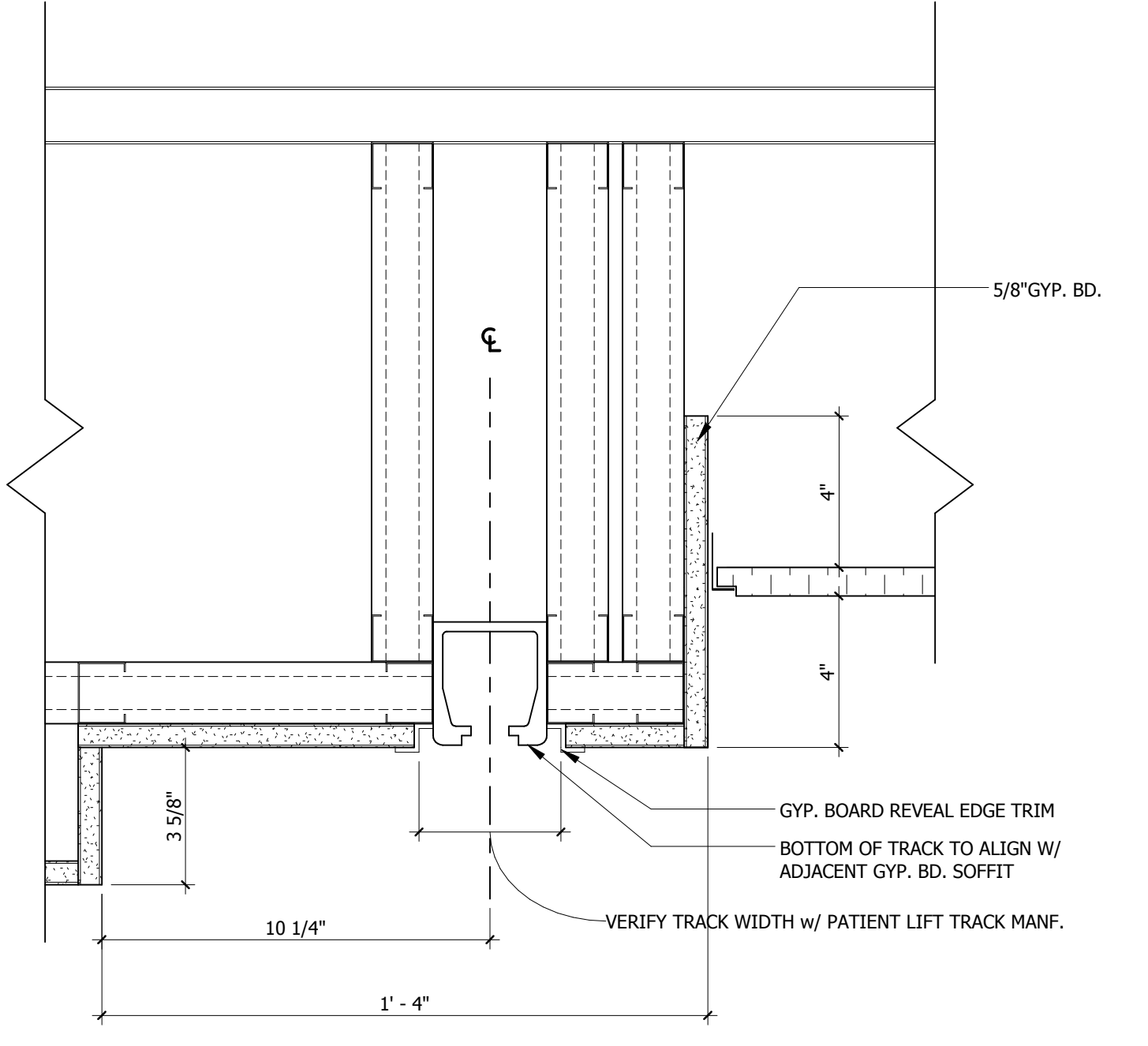


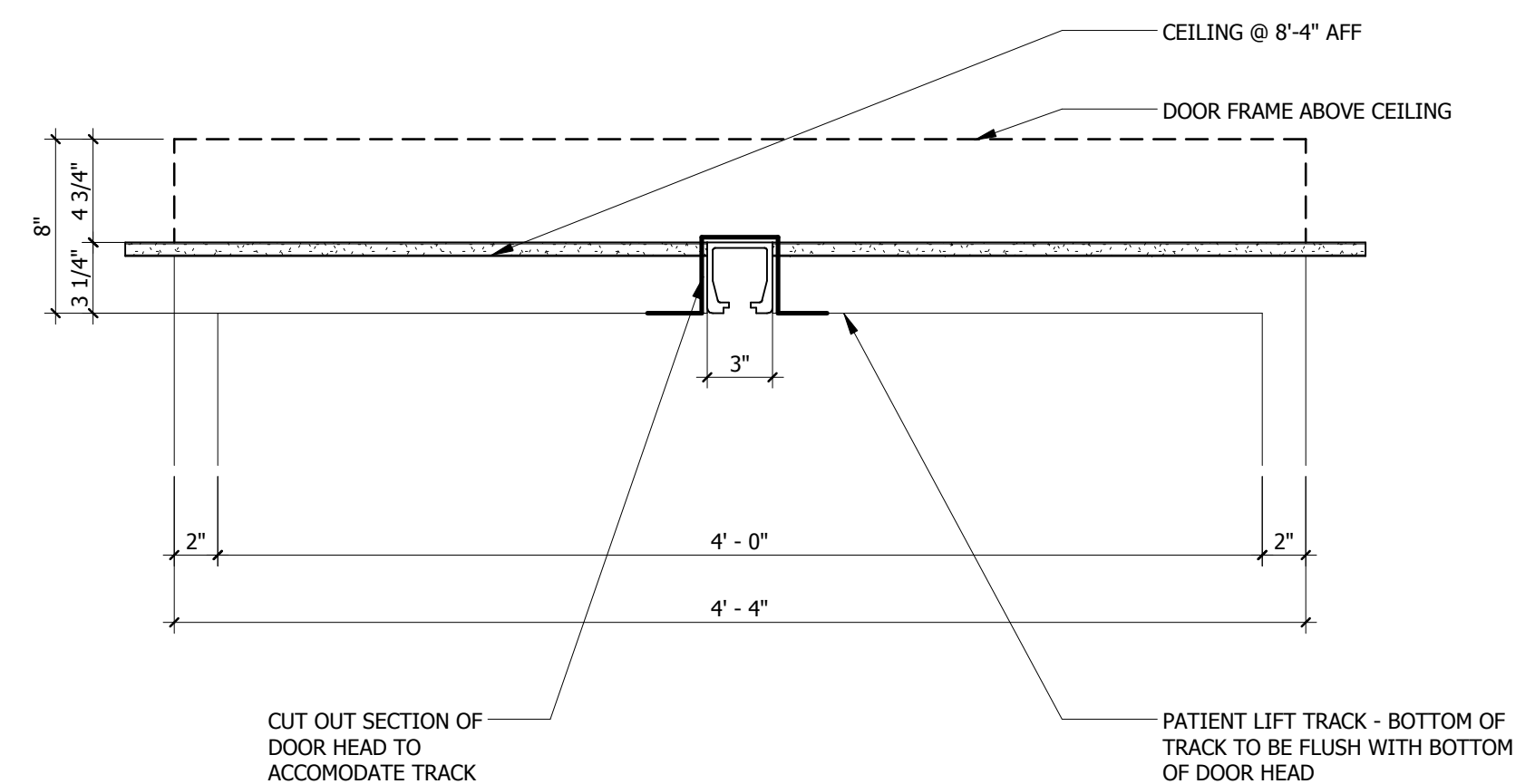
A one and one half inches = one foot
B one inch = one foot
C three quarters inch = one foot
D one half inch = one foot
E one quarter inch = one foot
F one eighth inch = one foot



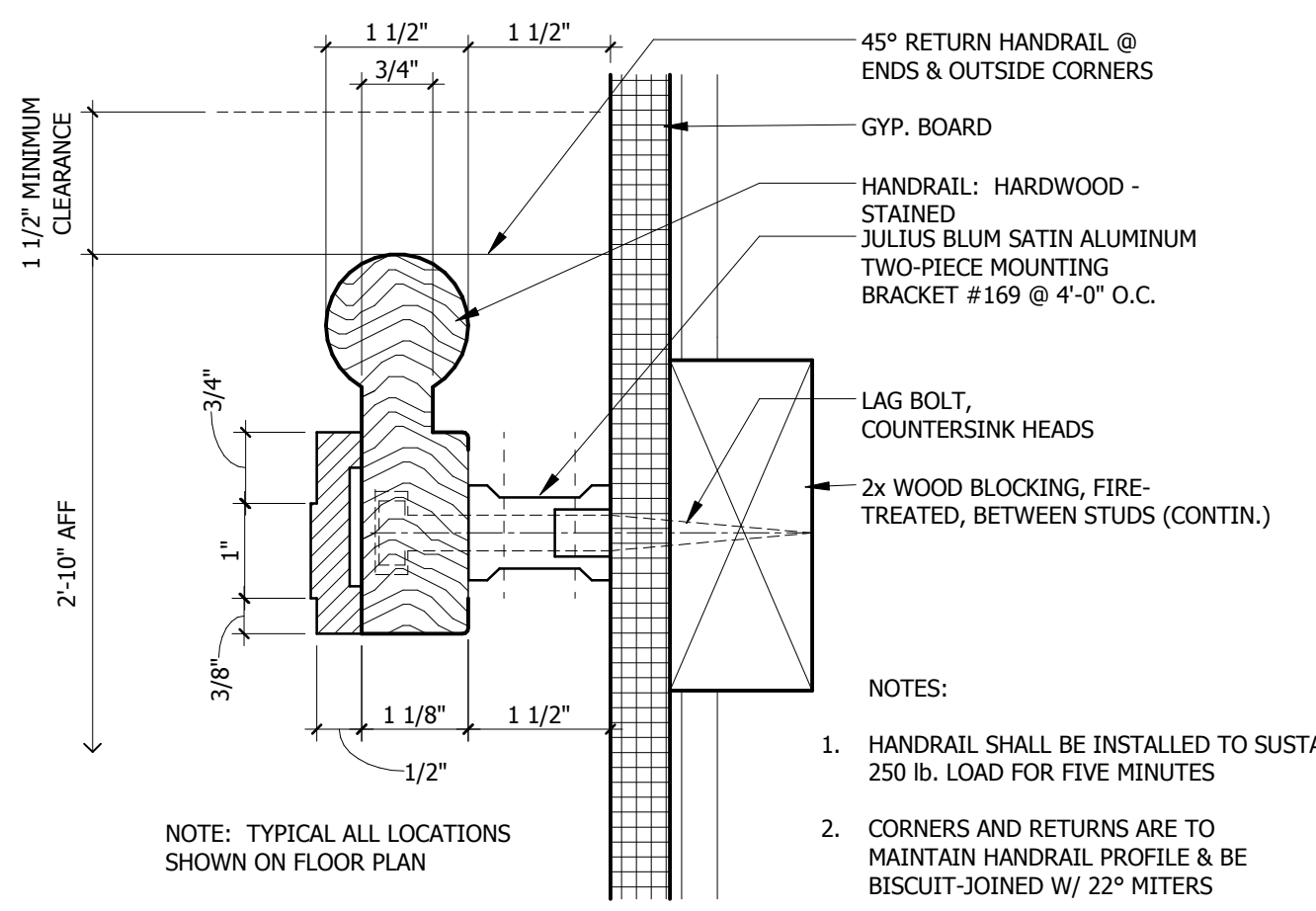
11 DRAPERY POCKET DETAIL
SCALE 1 1/2" = 1'-0"



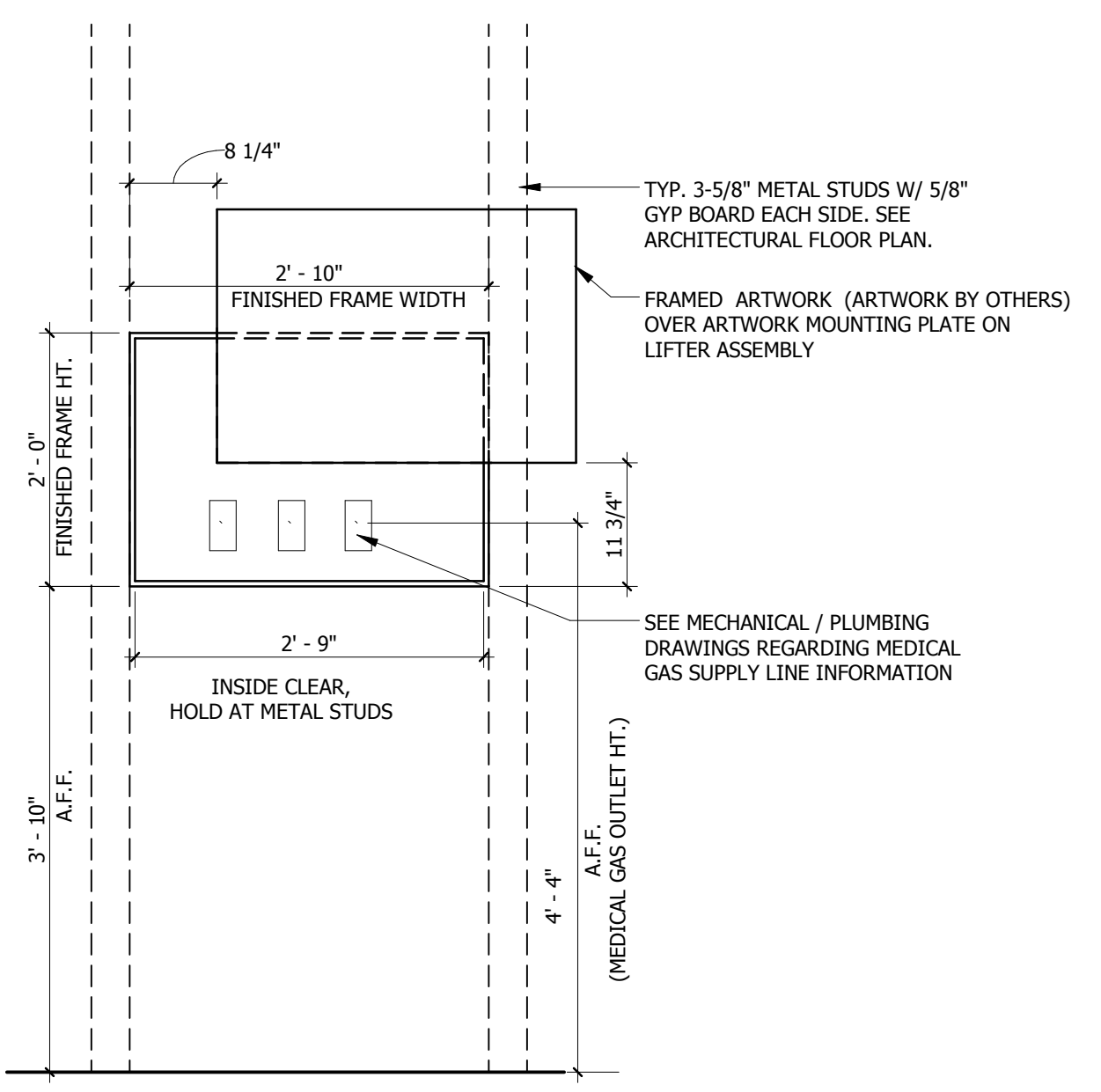
7 CEILING LIFT TRACK
SCALE 3" = 1'-0"



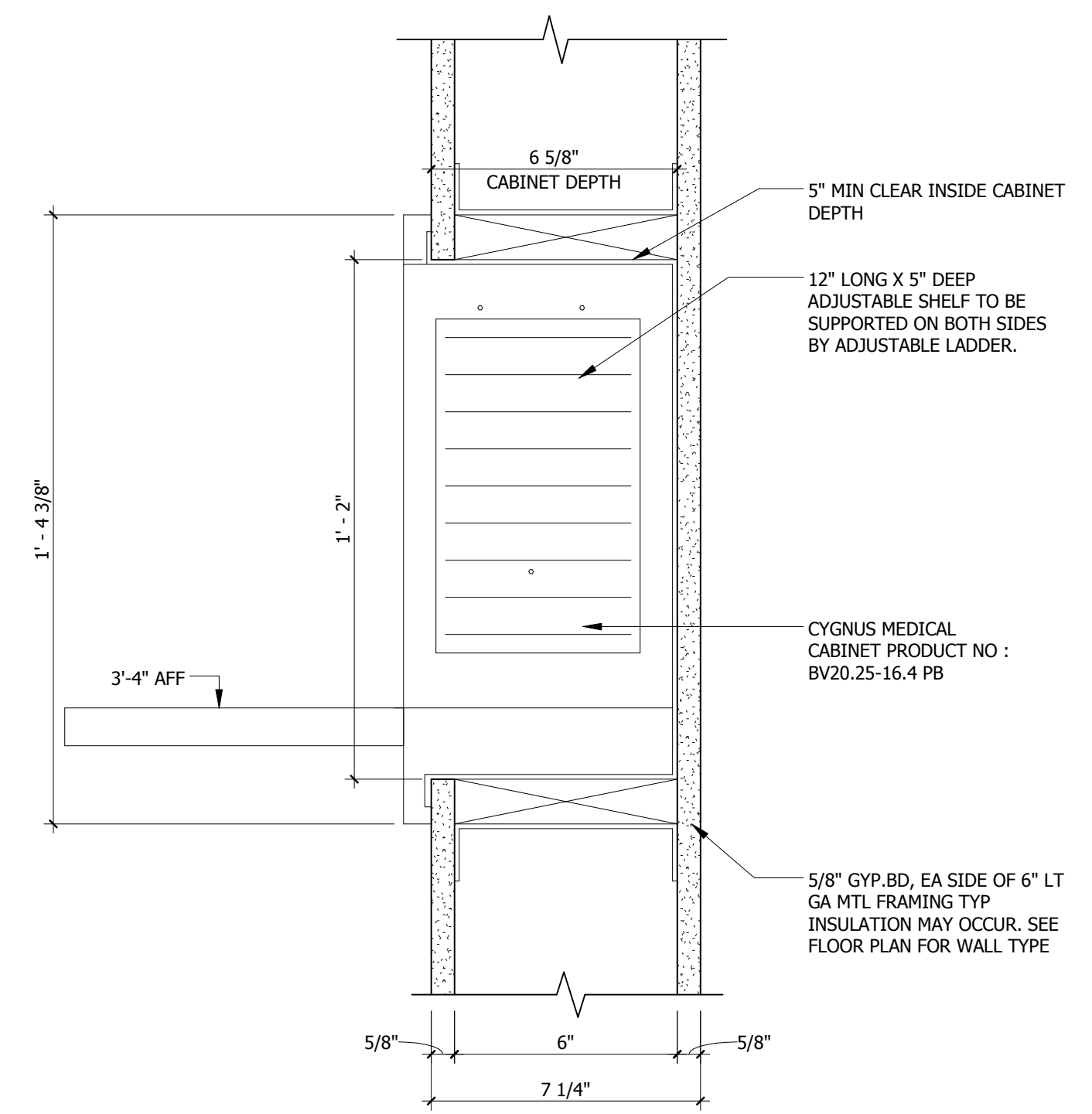
4 DOOR HEAD DETAIL
SCALE 1 1/2" = 1'-0"



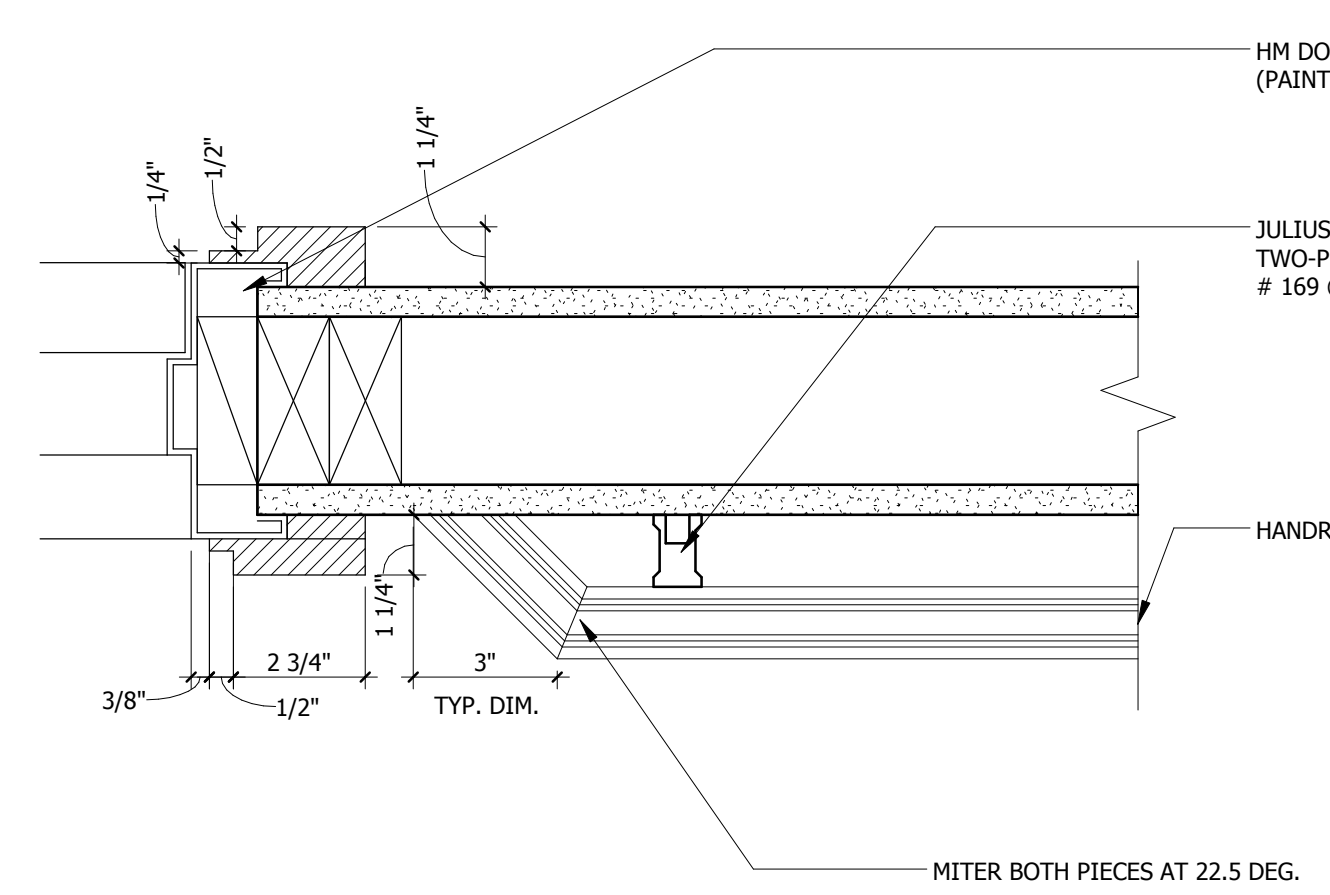
3 HANDRAIL DETAIL
SCALE 6" = 1'-0"



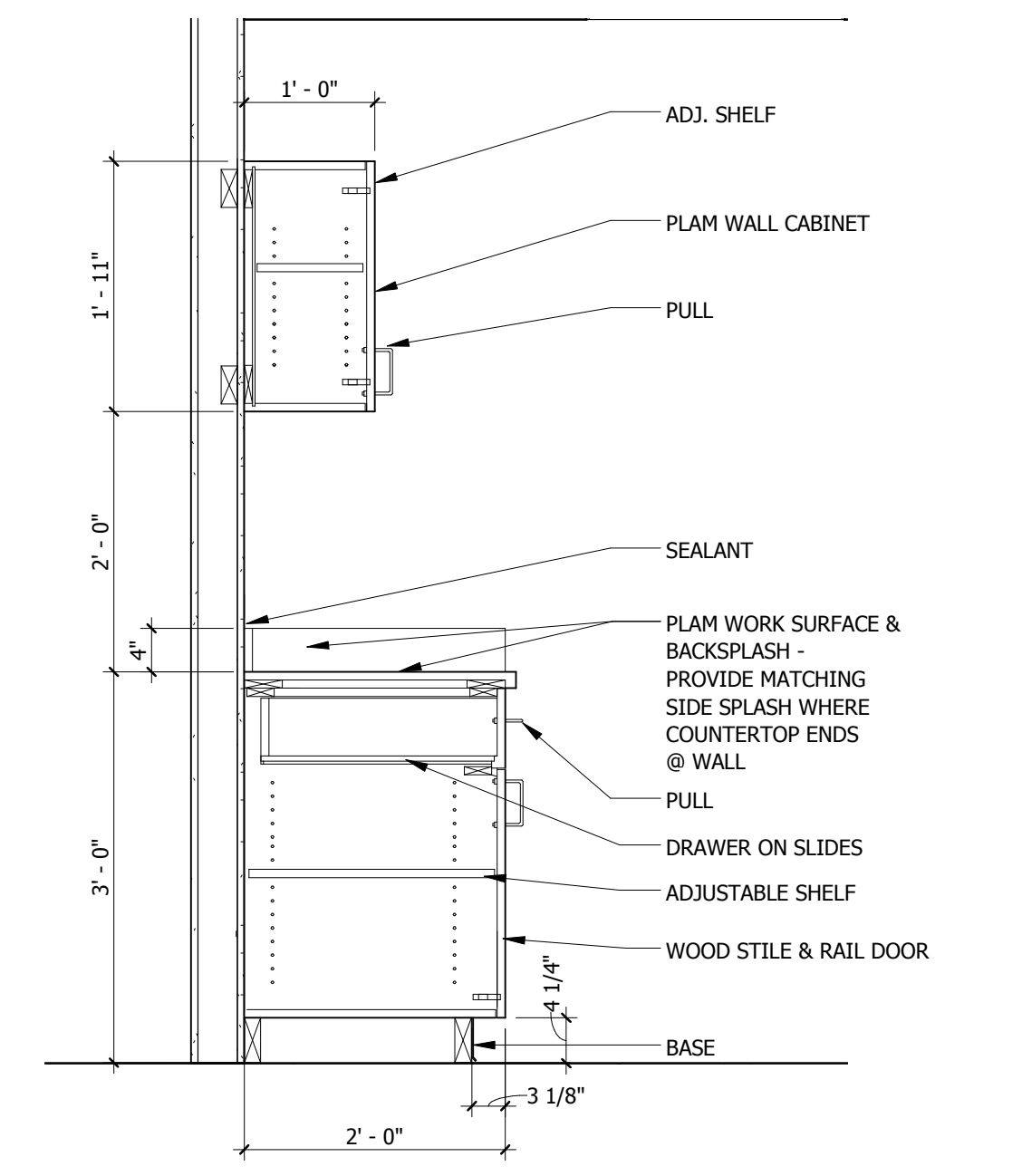
10 ENLARGED 'ARTWORKS' 3-GAS RECESSED UNIT (MODEL#6813-12)
SCALE 3/4" = 1'-0"



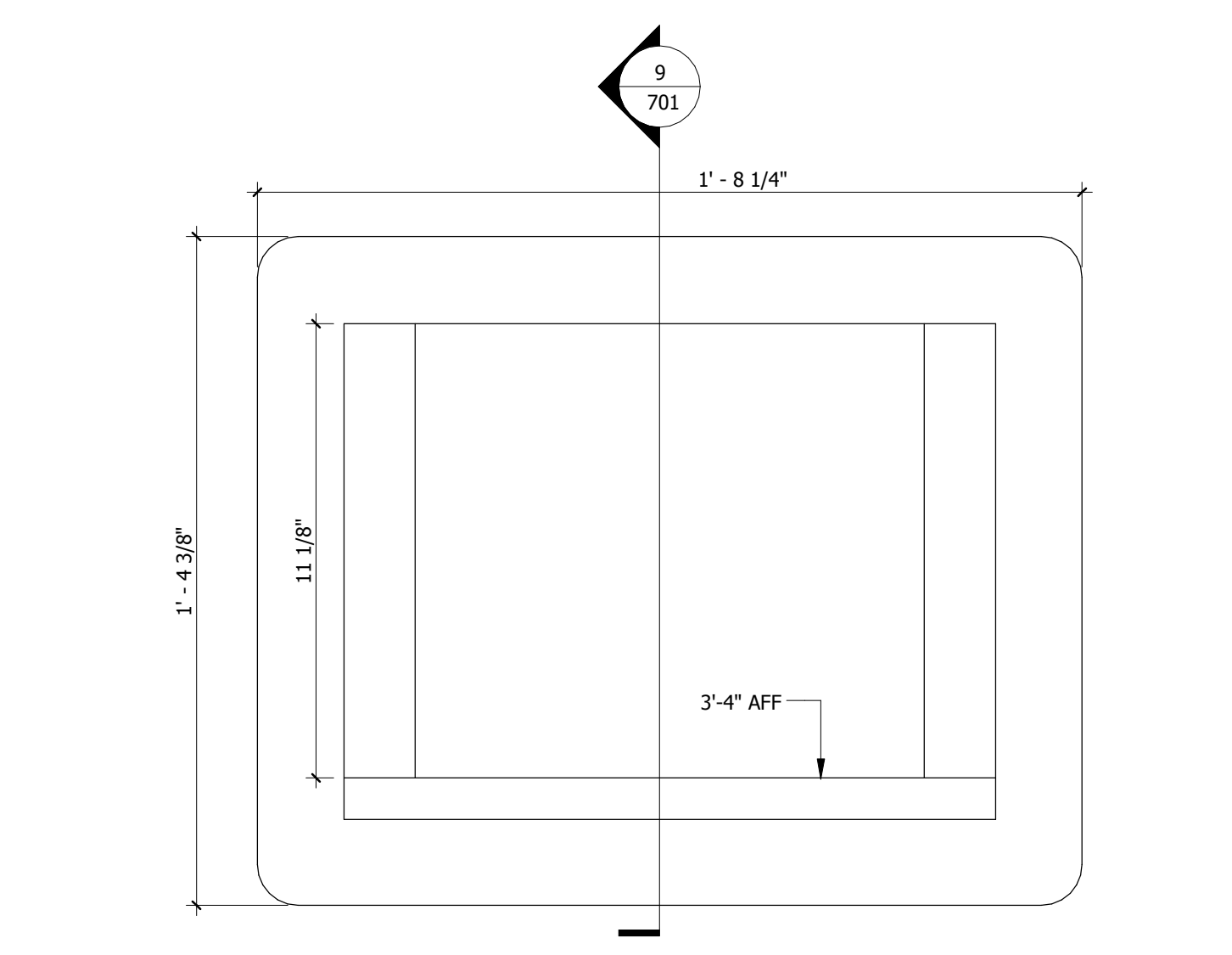
6 MEDICATION CABINET SECTION
SCALE 3" = 1'-0"



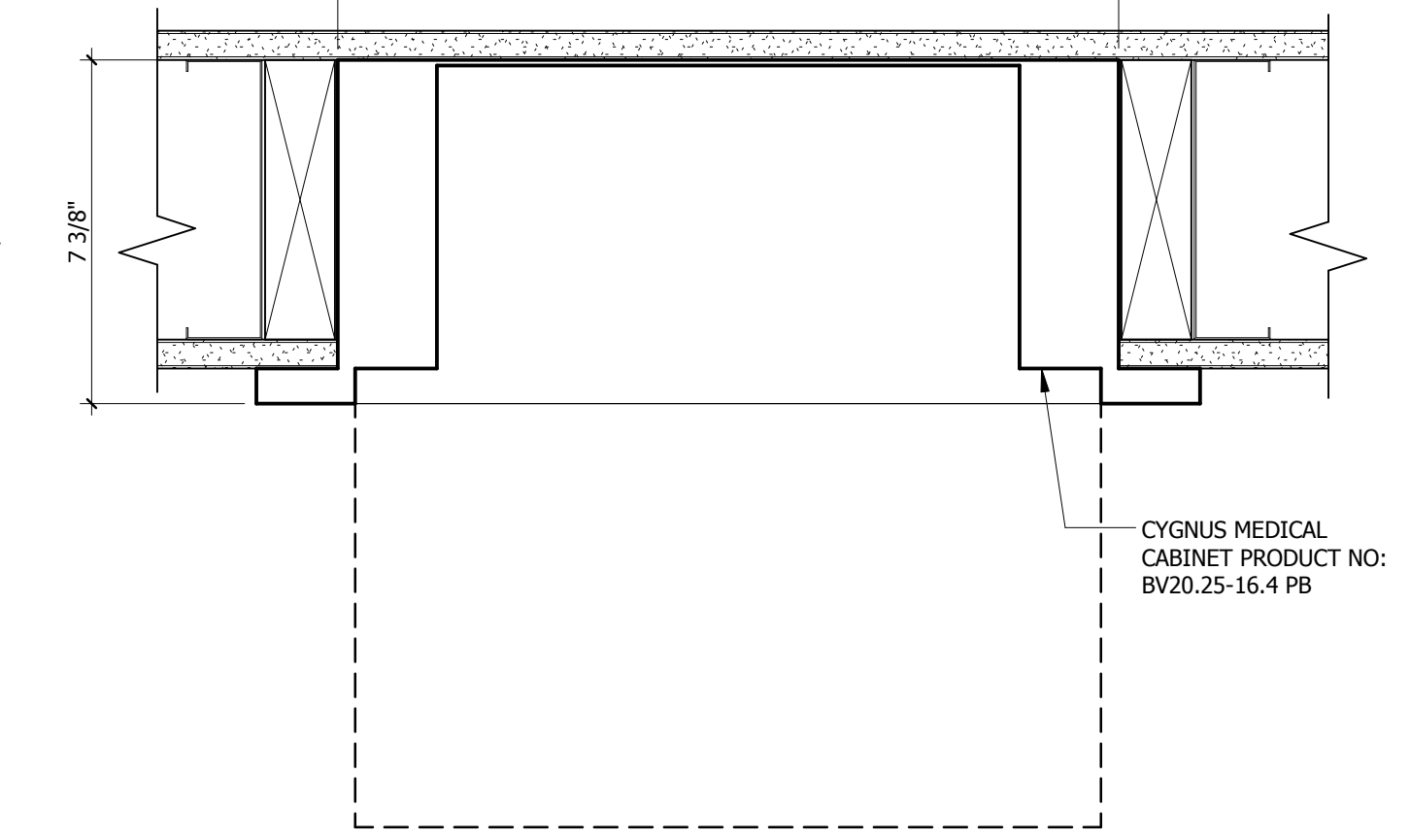
2 HANDRAIL PLAN DETAIL
SCALE 3" = 1'-0"



8 MED PREP. COUNTER
SCALE 3/4" = 1'-0"



5 MEDICATION CABINET ELEVATION
SCALE 3" = 1'-0"



1 MEDICATION CABINET PLAN
SCALE 3" = 1'-0"

GENERAL NOTES:

1. INTERIOR DIMENSIONS GIVEN ARE FROM FINISH TO FINISH OR TO CENTERLINE OF COLUMN UNLESS NOTED OTHERWISE.
2. TOLERANCES FOR BUILT-IN ITEMS, INCLUDING ARCHITECTURAL WINDOWS, CASEWORK AND APPLIANCES, MUST BE FIELD VERIFIED BY THE CONTRACTOR TO ENSURE ADEQUATE CLEARANCES AND PROPER FIT.
3. REFER TO REFLECTED CEILING PLANS FOR CEILING HEIGHTS AND TYPES.
4. REFER TO SPECIFICATIONS FOR FINISHES AND MANUFACTURERS.
5. REFER TO 1/8" SCALE FLOOR PLANS FOR DOOR DESIGNATIONS AND 1/8" SCALE EXTERIOR ELEVATIONS FOR WINDOW DESIGNATIONS.
6. REFER TO A700 SERIES FOR TYPICAL MOUNTING HEIGHTS OF ACCESSORIES AND DEVICES. PROVIDE FIRE RETARDANT WOOD BLOCKING FOR ACCESSORIES AND DEVICES. SEE DETAIL 19/A702 FOR GRAB BAR AND CABINETS METAL BLOCKING.
7. ALL DISPENSERS, INCLUDING SHARPS, PAPER TOWEL, SOAP, HAND SANITIZER AND GLOVE DISPENSERS ARE FURNISHED BY THE GOVERNMENT & INSTALLED BY THE CONTRACTOR.
8. REFER TO LIFE SAFETY PLANS FOR LOCATION OF FIRE RATED PARTITIONS.
9. PROVIDE FIBER-REINFORCED WATER & MOLD RESISTANT GYPSUM PANELS AT ALL WET WALL LOCATIONS AND WALLS BEHIND AND ADJACENT TO SINKS.
10. CONFIRM ALL CABINET & COUNTER TOP LAYOUTS WITH SHOP DRAWINGS.
11. REFER TO KITCHEN EQUIPMENT DRAWINGS FOR ALL APPLIANCE INFORMATION.

TOILET ACCESSORIES LEGEND:

- ITEMS PURCHASED AND INSTALLED BY CONTRACTOR:**
1. SWING UP GRAB BARS W/ INTEGRATED TOILET PAPER DISPENSER
 2. SHOWER GRAB BAR
 3. TOWEL BAR
 4. SHOWER TRANSFER SEAT
 5. ROBE HOOK
 - 5a. RECESSED MEDICINE CABINET - REFER TO SPECIFICATIONS
- ITEMS PURCHASED BY GOVERNMENT AND INSTALLED BY CONTRACTOR:**
6. TOILET PAPER DISPENSERS
 - 6a. SIDE BY SIDE DOUBLE ROLL BATHROOM DISPENSER (#56784) BY GEORGIA PACIFIC
 7. PAPER TOWEL HOLDERS
 - 7a. SOFTROLL TRANSLUCENT SMOKE DISPENSER (CENTER PULL) (#58204) (SIZE: 11.5" x 9.25" x 8.75") FOR ROLLS
 8. SOAP DISPENSER
 - 8a. BACTI-FOAM SOAP DISPENSER (#92723188) FOR BACTI-FOAM SOAP (#EL61806-499) BY ECOLAB
- ITEMS PURCHASED AND INSTALLED BY GOVERNMENT:**
9. HAND SANITIZER DISPENSER
 10. SHARPS CONTAINER
 11. WASTE BASKET
 12. GLOVES DISPENSER

BID DOCUMENTS FULLY SPRINKLERED

Revisions:		Date:		CONSULTANTS:		ARCHITECT/ENGINEERS:		Drawing Title: INTERIOR DETAILS		Project Title: RELOCATE DEMENTIA UNIT		Project Number: VA PN 613-107		Office of Construction and Facilities Management Department of Veterans Affairs	
						C.C. HODGSON ARCHITECTURAL GROUP P.C.		Approved: Project Director		Location: VAMC MARTINSBURG		Building Number: 513			
								Date: 8/6/2012		Checked: Checker		Drawn: Author			
										Dwg. of --					