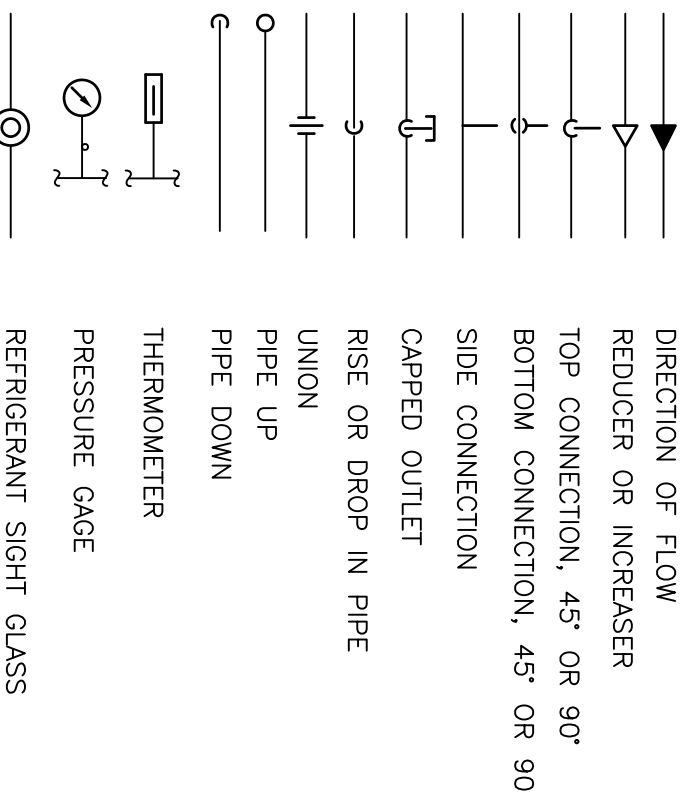


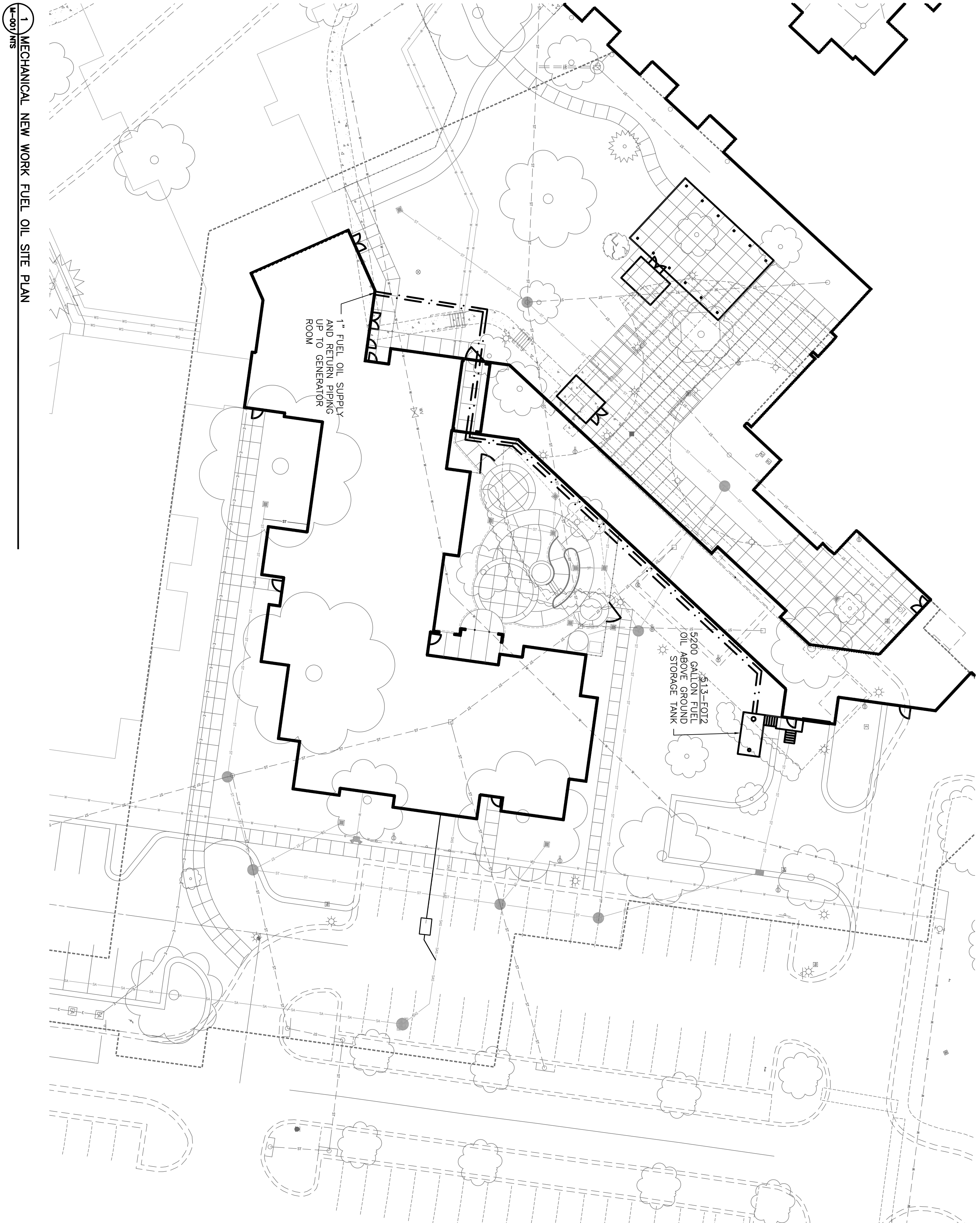
one eighth inch = one foot



0 4 8 16

[illegible]

1. ALL PIPING, DUCTS IN FINISHED ROOMS OR SPACES SHALL BE CONCEALED IN A FINISHED CHASE OR ABOVE THE HAOB SCHEDULED CEILING.
2. THE FIRST RIGURE OF DUCT SIZE INDICATES DIMENSION OF FACE SHOWN OR INDICATED DUCT SIZES ARE NET INSIDE DIMENSIONS.
3. ACCESS PANELS IN HAOB SCHEDULED CEILING ARE REQUIRED FOR ALL VALVES, TRAPS, DAMPERS, ELIMINATORS, CONTROLS, ETC. ACCESS PANELS SHALL BE FINISHED AND INSTALLED UNDER THE ARCHITECTURAL SPECIFICATIONS.
4. TOTAL STATIC PRESSURE NOTED IN THE SCHEDULES INCLUDES DUCT SYSTEM, TERMINAL, VALVES, FILTERS, COLLS, ETC.
5. DIFFUSERS, REGISTER AND GRILLE SIZES SHOWN ON FLOOR PLANS ARE NECK SIZES.
6. WALL THE EXHAUST REGISTERS NOTED AS "B7" ON DRAWINGS ARE TO BE INSTALLED WITH BOTTOM EDGELINE REGISTER AT 7' (2175mm) ABOVE FINISHED FLOOR.
7. REFERS TO ARCHITECTURAL REFLECTED CEILING PLANS FOR EXACT LOCATIONS OF CEILING DIFFUSERS, REGISTERS, AND GRILLES.



C.C. HODGSON  
ARCHITECTURAL GROUP P.C.

**Westlake  
Reed  
Leskosky**  
1634 EYE ST, NW, STE 900  
WASHINGTON, DC 20006

Approved: Project Director

|                 |                        |
|-----------------|------------------------|
| Project Title   | RELOCATE DEMENTIA UNIT |
| Project Number  | VA PH 613-207          |
| Building Number | 513                    |
| Location        | VAMC MARTINSBURG       |
| Drawn           |                        |
| Checked         |                        |
| Date            |                        |

M-001

**Office of  
Construction  
and Facilities  
Management**