

one and one half inches = one foot
one inch = one foot
three quarters inch = one foot
one half inch = one foot
one quarter inch = one foot
one eighth inch = one foot

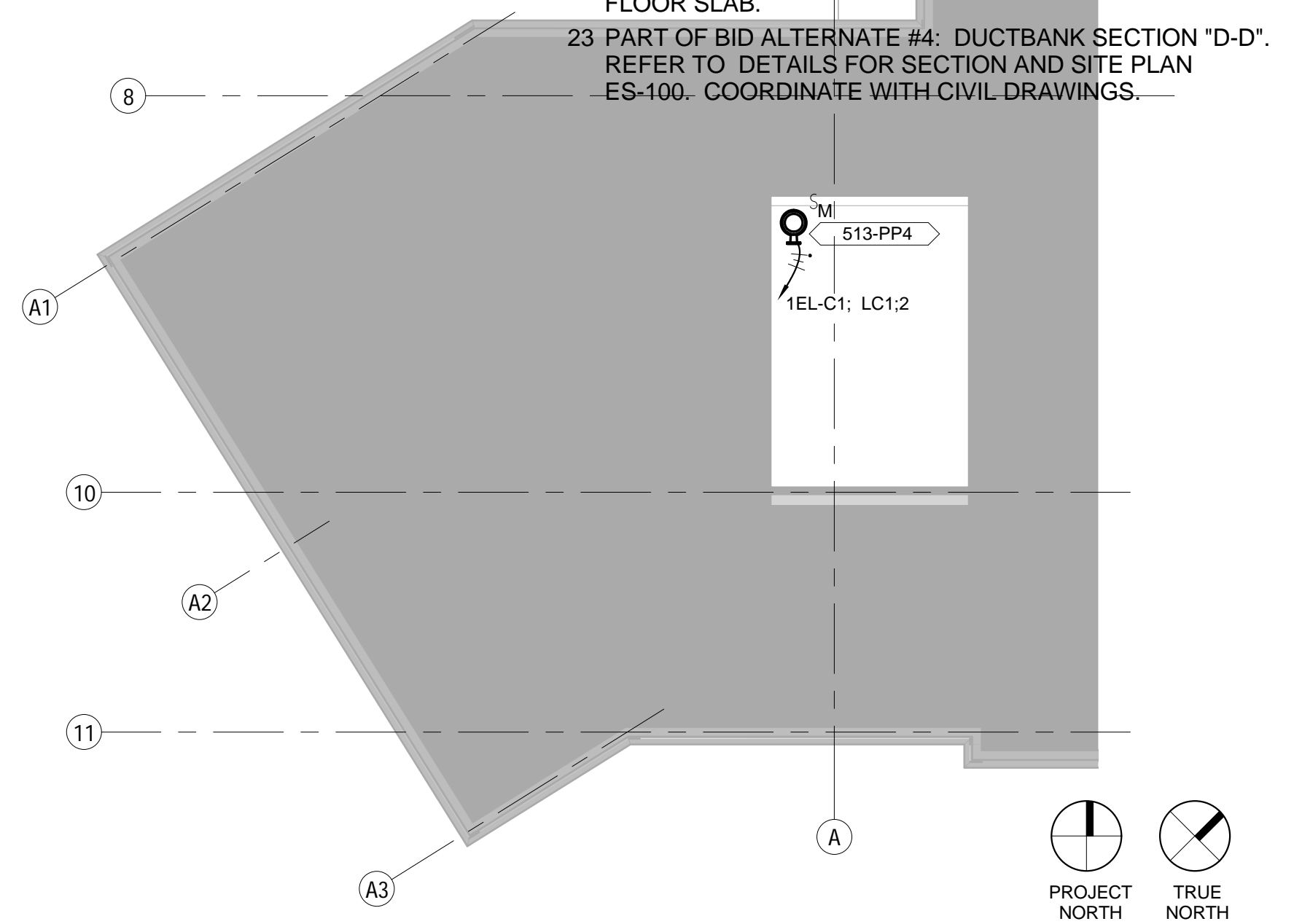
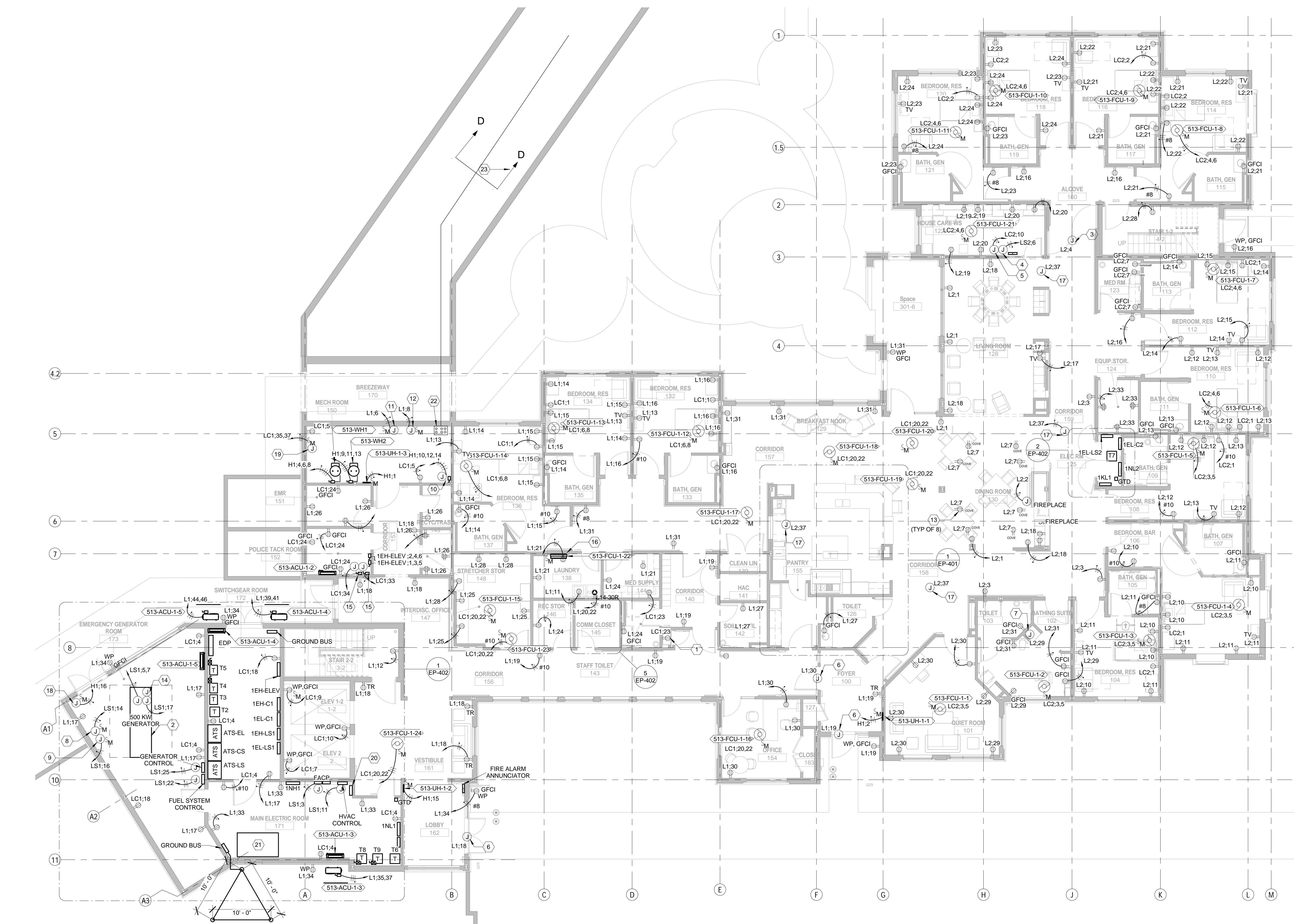
- POWER GENERAL NOTES
- UNLESS NOTED OTHERWISE BY FULL PANEL NAME, CIRCUIT ALL FIXTURES, DEVICES, AND EQUIPMENT ON THIS FLOOR TO PANELS IN THE EAST AND WEST ELECTRICAL CLOSETS AS INDICATED BY EACH DEVICE'S ANNOTATION. REFER TO ELECTRICAL SYMBOL LEGEND ON E-001 FOR CIRCUIT ANNOTATION CONVENTION.
 - FOR EACH MECHANICAL UNIT, PROVIDE CIRCUIT, ASSOCIATED DISCONNECT SWITCHES, DRIVES, CONTROLLERS, AND OTHER ITEMS AS SCHEDULED ON THE ELECTRICAL CONNECTION SCHEDULE. SEE SHEET E-602.
 - PANELBOARD ABBREVIATIONS ARE USED FOR CIRCUITING. REFER TO PANELBOARD HOMERUN ABBREVIATIONS BOXED NOTE ON THIS SHEET FOR DEFINITIONS.
 - PANELBOARD CIRCUIT TAGS ARE DRAWN NEXT TO DEVICE OR EQUIPMENT IN LIEU OF CONVENTIONAL CIRCUIT SEGMENTS.

- SHEET KEYED NOTES
- RECEPTACLE FOR PNEUMATIC TUBE SYSTEM STATION FURNISHED BY PNEUMATIC TUBE SYSTEM MFR. RECEPTACLE IS LOCATED INSIDE STATION ENCLOSURE.
 - PROVIDE GENERATOR SET ACCESSORIES AS REQUIRED FOR GENERATOR PERFORMANCE AS LIFE-SAFETY STANDBY POWER.
 - FOR SMOKE DAMPER ELECTRIC ACTUATOR.
 - FOR MED GAS ALARM PANEL. COORDINATE LOCATION IN FIELD WITH ARCHITECT.
 - FOR NURSE CALL SYSTEM PANEL. COORDINATE LOCATION IN FIELD WITH ARCHITECT.
 - PROVIDE BRANCH CIRCUIT CONNECTION TO AUTOMATIC DOOR OPERATOR. PROVIDE 3/4" EC FROM OPERATOR TO (2) PUSH PLATES. REFER TO ARCHITECTURAL SHEETS FOR LOCATION OF PUSH PLATES. LOW VOLTAGE WIRING FROM OPERATOR TO PUSH PLATES BY OTHERS.
 - ELECTRIC TOWEL WARMER: 120V, 1.25A, HARD WIRED. PROVIDE BRANCH CIRCUIT CONNECTION TO WALL MOUNTED RECESSED TIMER/CONTROL DEVICE FURNISHED BY TOWEL WARMER MFR. COORDINATE TIMER/CONTROL DEVICE LOCATION WITH ARCHITECT. PROVIDE J-BOX FOR TIMER/CONTROL DEVICE AND J-BOX FOR ELEC CONNECTION TO WARMER.
 - FUEL OIL DAY TANK PUMP 513-FOP-2A. PUMP IS PART OF A DUPLEX SYSTEM. PUMP RATING IS 3/4 HP, 120V, SINGLE PHASE. PROVIDE MANUAL MOTOR CONTROLLER FOR DISCONNECT MEANS. PROVIDE 2#10 + #10 GND IN 3/4"C. PROVIDE CIRCUIT CONNECTION TO PUMP FROM DAYTANK CONTROL SYSTEM.
 - FUEL OIL DAY TANK PUMP 513-FOP-2B. PUMP IS PART OF A DUPLEX SYSTEM. PUMP RATING IS 3/4 HP, 120V, SINGLE PHASE. PROVIDE MANUAL MOTOR CONTROLLER FOR DISCONNECT MEANS. PROVIDE 2#10 + #10 GND IN 3/4"C. PROVIDE CIRCUIT CONNECTION TO PUMP FROM DAYTANK CONTROL SYSTEM.
 - HUMIDIFIER 513-SSXH-1: 480V, 22.5A, 3-PHASE. PROVIDE 3#10 + #10 GND IN 3/4"C AND 30A NFSS.
 - HOT WATER CIRCULATION PUMP: 513-PP1: 120V, 1/4 HP, 1-PHASE. PROVIDE MANUAL MOTOR CONTROLLER.
 - HEAT PUMP CIRCULATION PUMP: 120V, 1/4 HP, 1-PHASE. PROVIDE MANUAL MOTOR CONTROLLER.
 - PROVIDE RECEPTACLE IN CEILING COVE FOR COVE LIGHTING FIXTURES. SEE LIGHTING PLAN.
 - PROVIDE 1" EC WITH PULLSTRING BACK TO GENERATOR CONTROL PANEL.
 - PROVIDE ELEV. CAB LIGHTING 120V, 30A FUSIBLE DISC. SWITCH/FUSED AT 20A WITH LOCKABLE FEATURE.
 - PROVIDE ELEC CIRCUIT CONNECTION TO 1EL-C1-20.22.
 - MOTORIZED DAMPER.
 - UNIT HEATER 513-UH-1-4: 277V, 1-PH, 3300W, 11.9A. PROVIDE 2#12 + 12 GND IN 3/4"C. PROVIDE MANUAL MOTOR CONTROLLER DISC. SW..
 - VRF WATER HEATER 513-WH3: 208V, 1-PHASE, 0.09A MCA. PROVIDE 2#12 + 1#12 GND IN 3/4"C.
 - PROVIDE TIME CLOCK AND 2#12 + 1#12 GND IN 3/4"C BACK TO CIRCUIT 1EL-LS1-6.
 - SUBSTATION WITH DISTRIBUTION PANEL "MDP"
 - PART OF BID ALTERNATE #4: SWEEP DUCTBANK CONDUITS FROM BELOW GRADE AND TURN UP ABOVE FLOOR SLAB.
 - PART OF BID ALTERNATE #4: DUCTBANK SECTION "D-D". REFER TO DETAILS FOR SECTION AND SITE PLAN ES-100. COORDINATE WITH CIVIL DRAWINGS.

PANELBOARD HOMERUN ABBREVIATIONS

H1 = 1NH1
H1C1 = 1EH-C1
L1 = 1NL1
LC1 = 1EL-C1

H2 = 1NH2
H2C2 = 1EH-C2
L2 = 1NL2
LC2 = 1EL-C2



1 1ST FLOOR POWER
1/8" = 1'-0"

2 UNDERGROUND POWER PLAN
1/8" = 1'-0"

ARCHITECT: C.C. HODGSON ARCHITECTURAL GROUP		ENGINEERS: Westlake Reed Leskosky 1634 EYE ST, NW, STE 900 WASHINGTON, DC 20006		Drawing Title ELECTRICAL NEW WORK FIRST FLOOR POWER PLAN Approved: Project Director		Project Title RELOCATE DEMENTIA UNIT Location VAMC MARTINSBURG Date 08/06/2012		Project Number VA PN 613-207 Building Number 513 Drawing Number EP-101 Dwg. of --		Office of Construction and Facilities Management Department of Veterans Affairs	
Revisions:		STATE OF MARYLAND Professional Engineer No. 10785 Date 8/6/2012				Checked GSL		Drawn DRW			