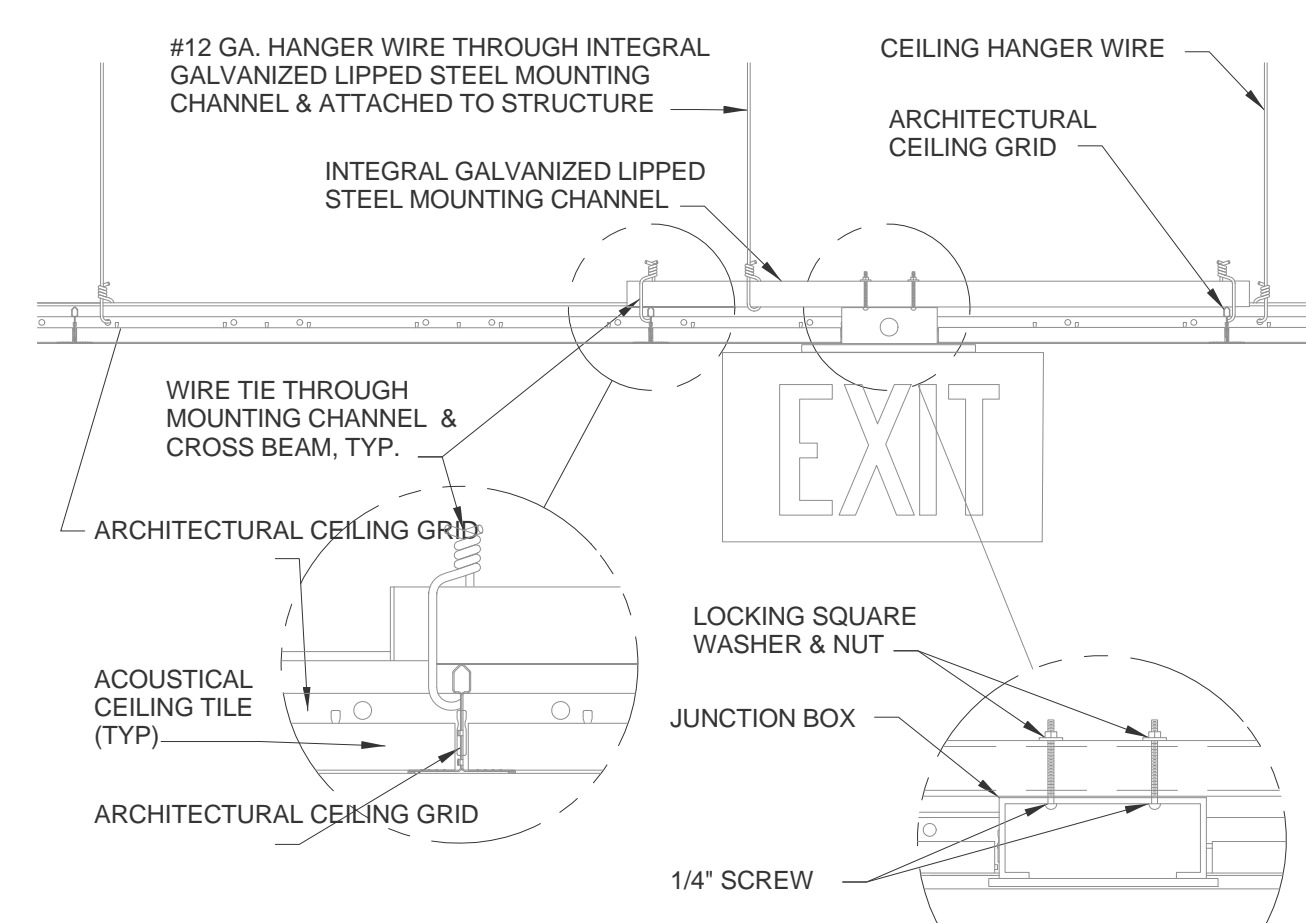
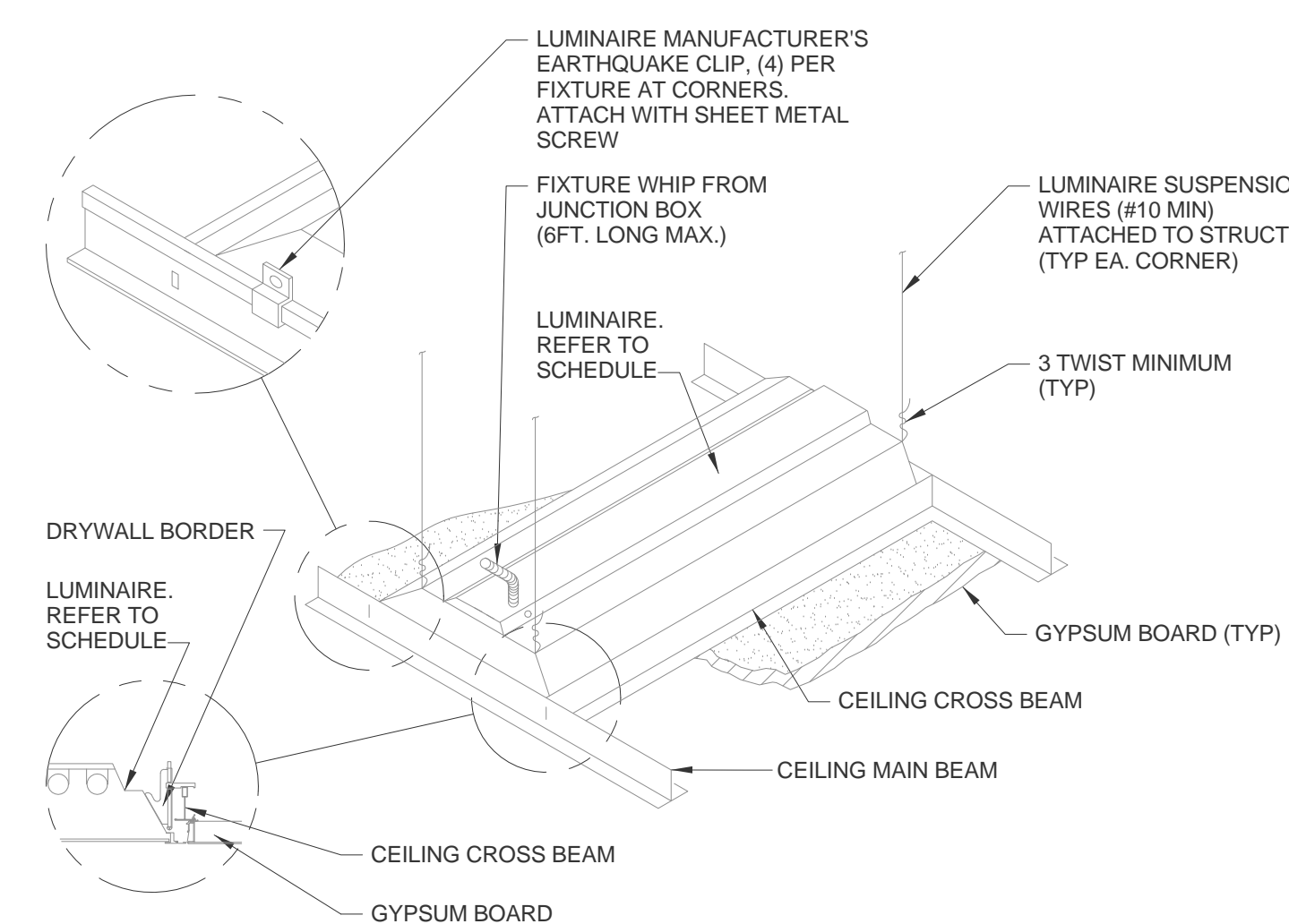


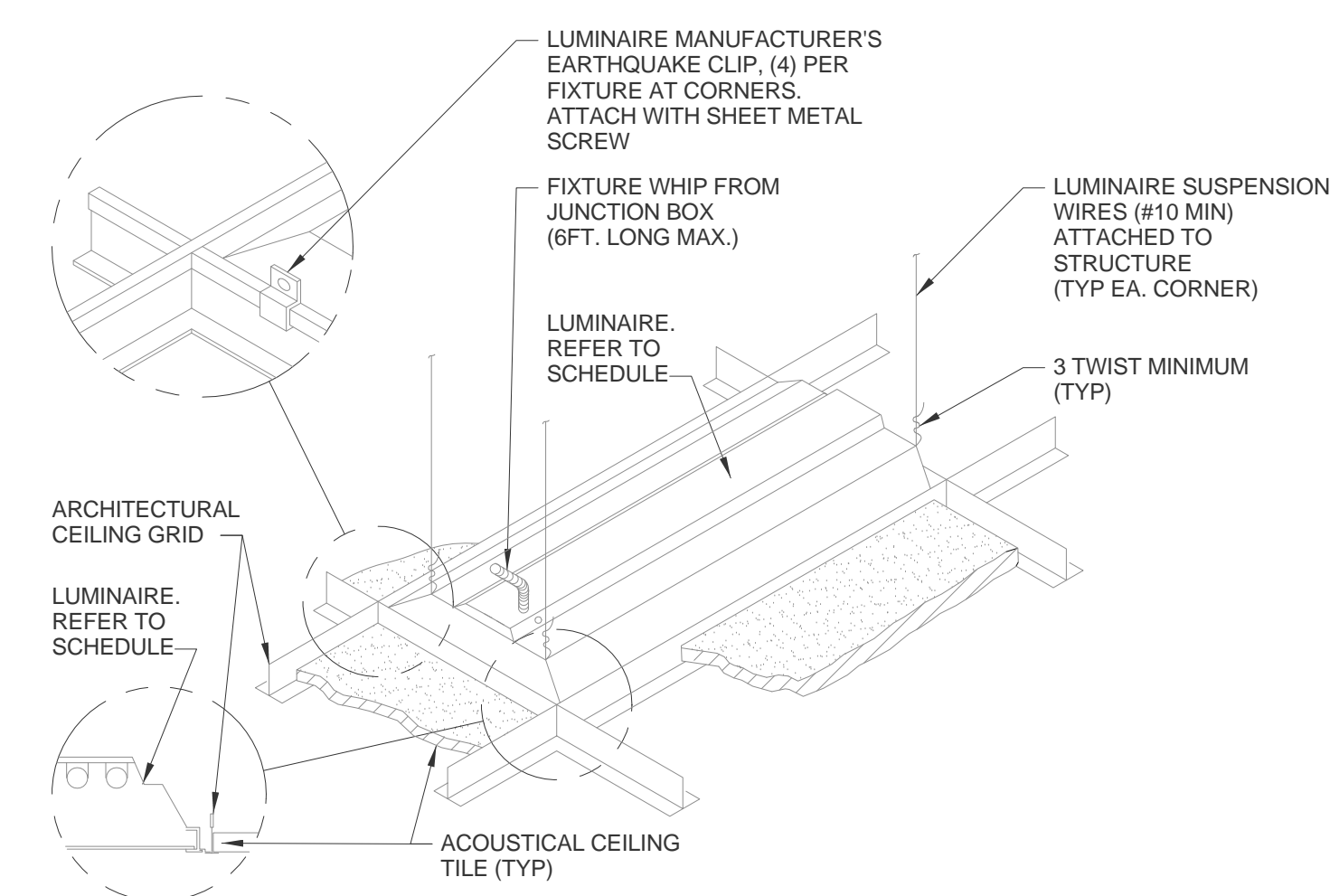
# 1 EXIT SIGN MOUNTING - GYPBOARD CEILING



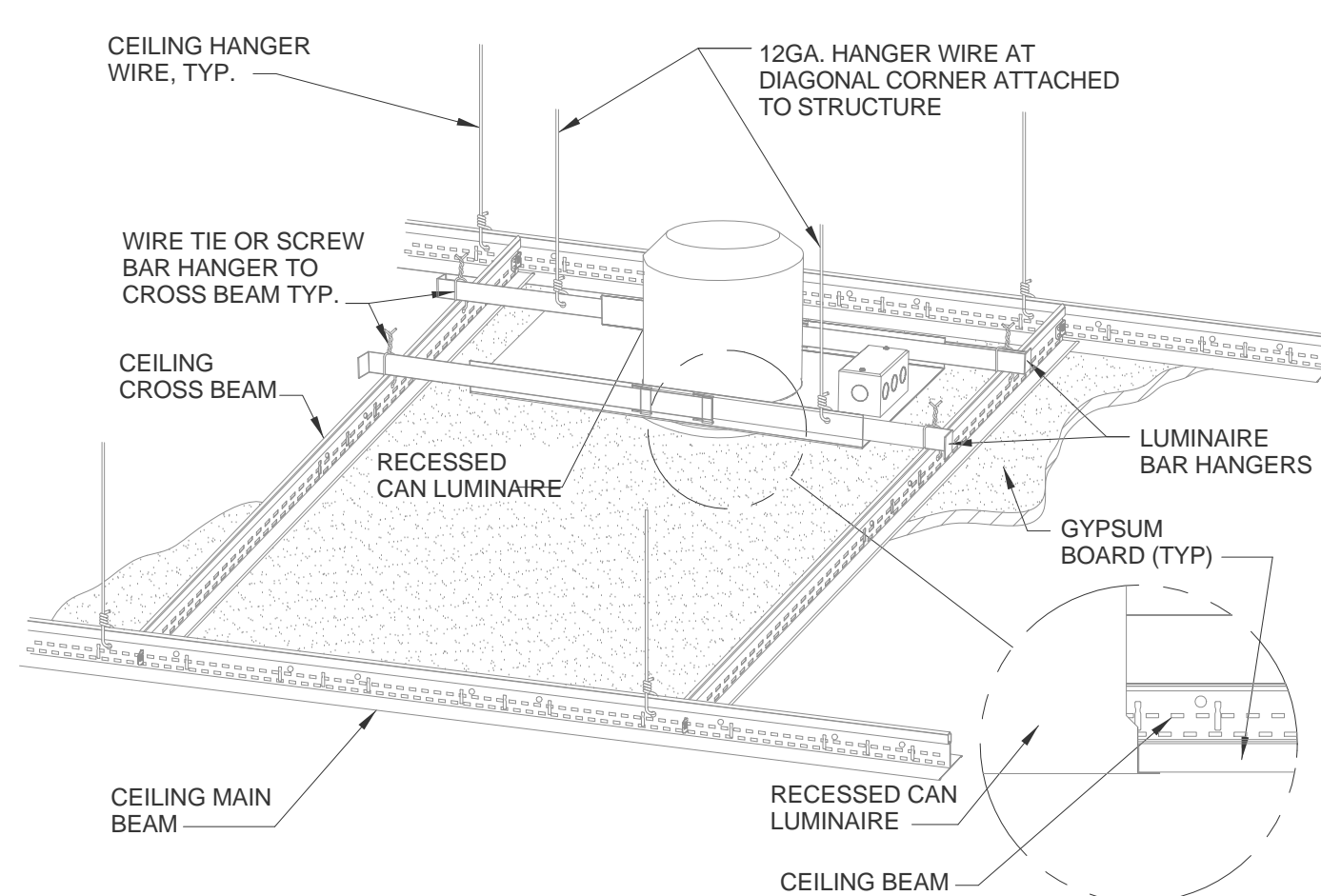
## 2 EXIT SIGN MOUNTING - LAY-IN CEILING



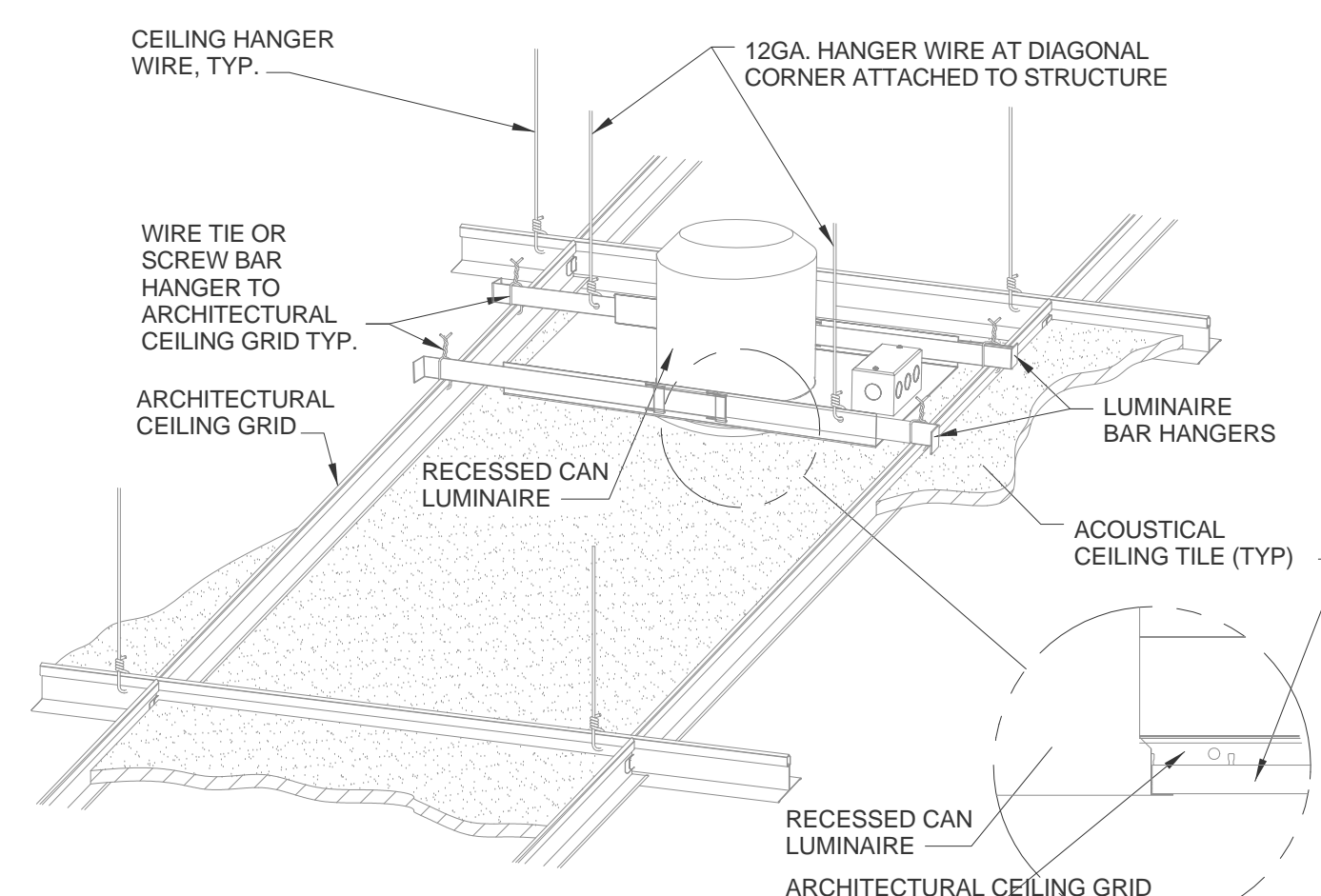
### 3 LUMINAIRE MOUNTING - GYPBOARD CEILING



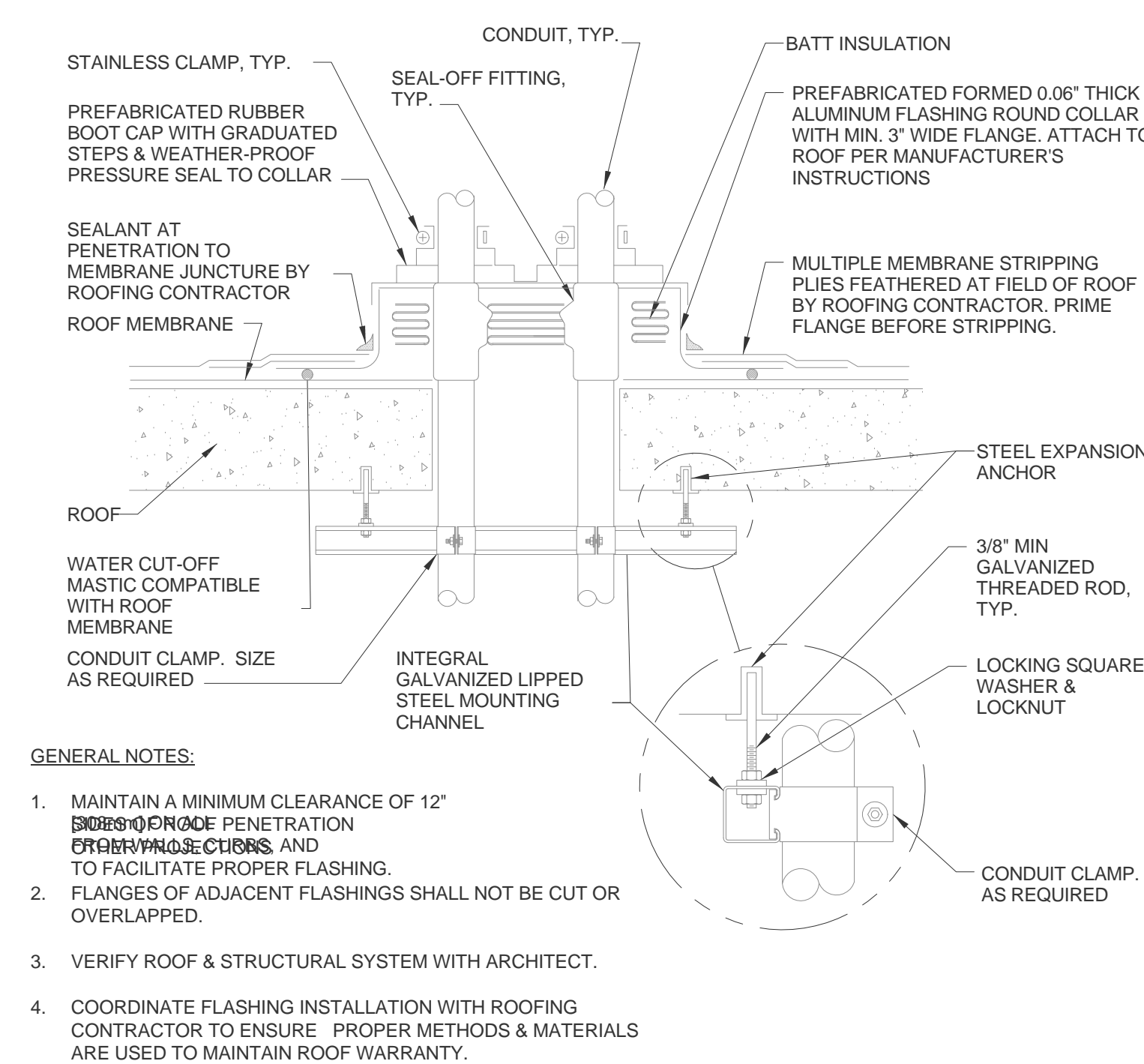
## 4 LUMINAIRE MOUNTING - LAY-IN CEILING



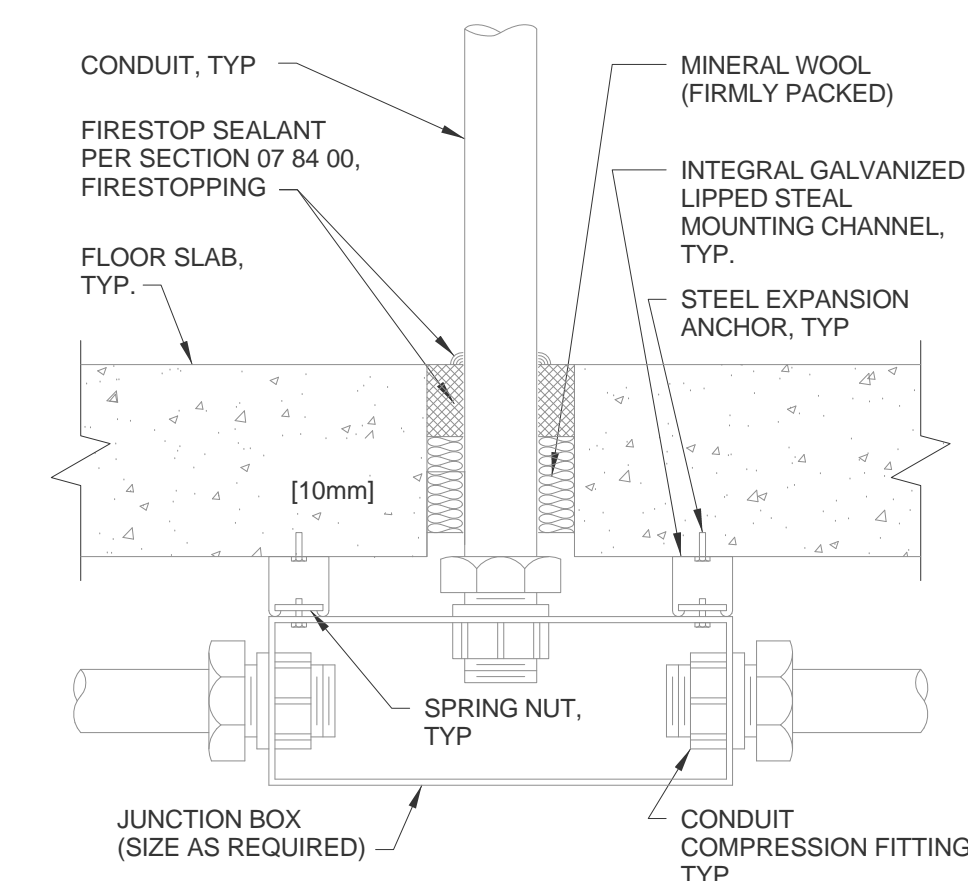
## 5 DOWNLIGHT MOUNTING - GYPBOARD CEILING



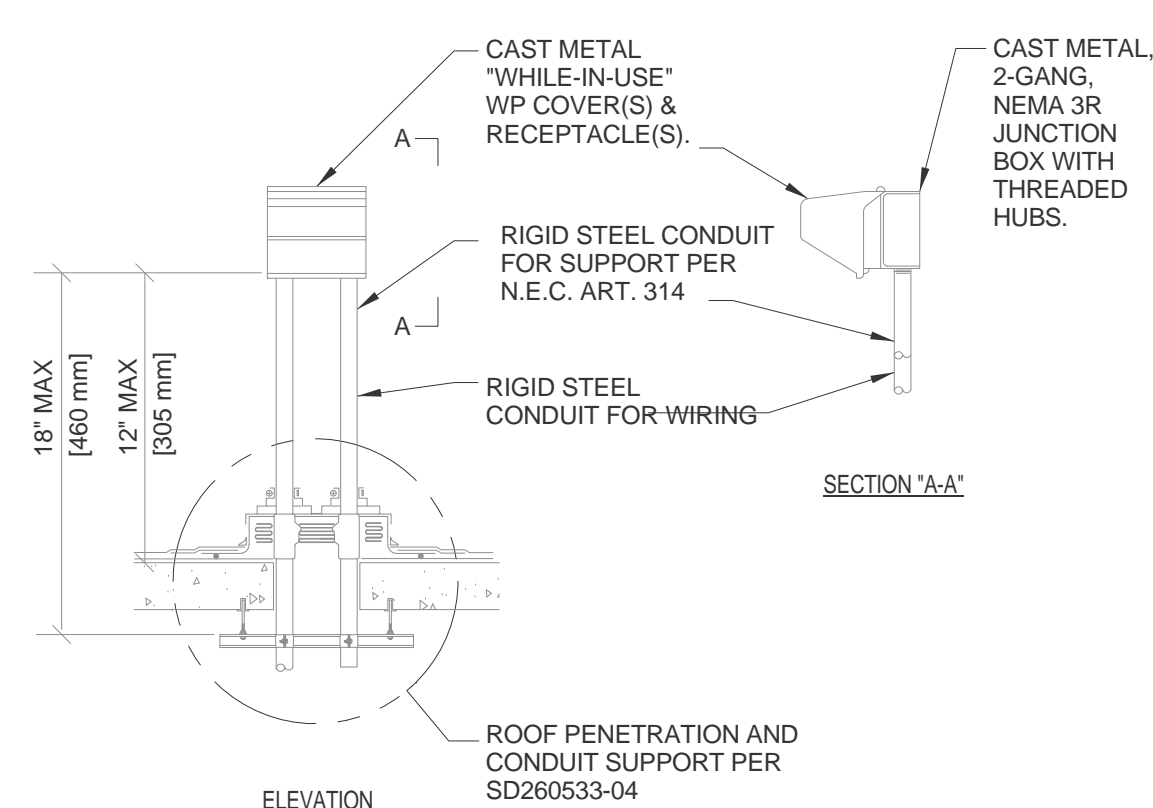
## 6 DOWNLIGHT MOUNTING - LAY-IN CEILING



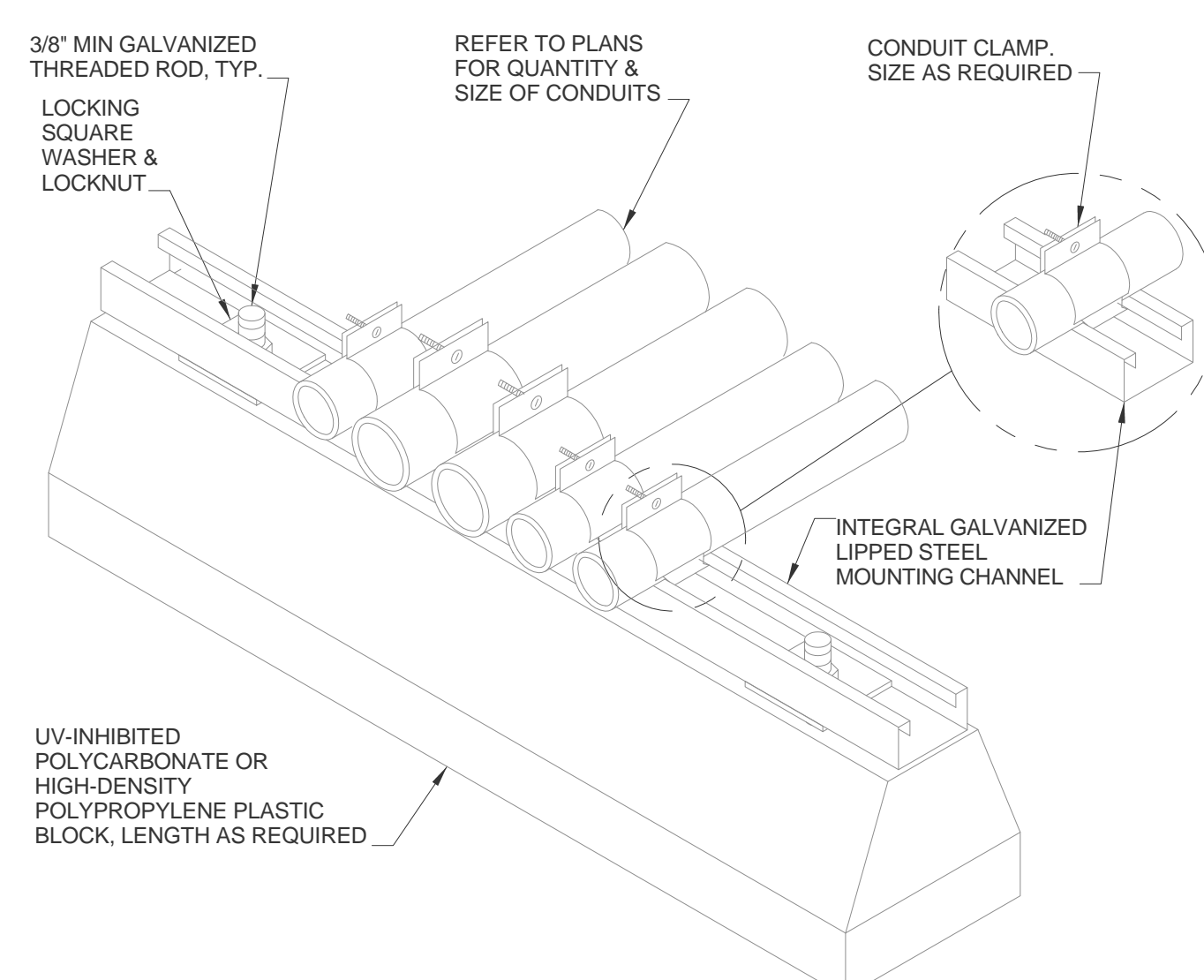
## 7 ROOF PENETRATION DETAIL



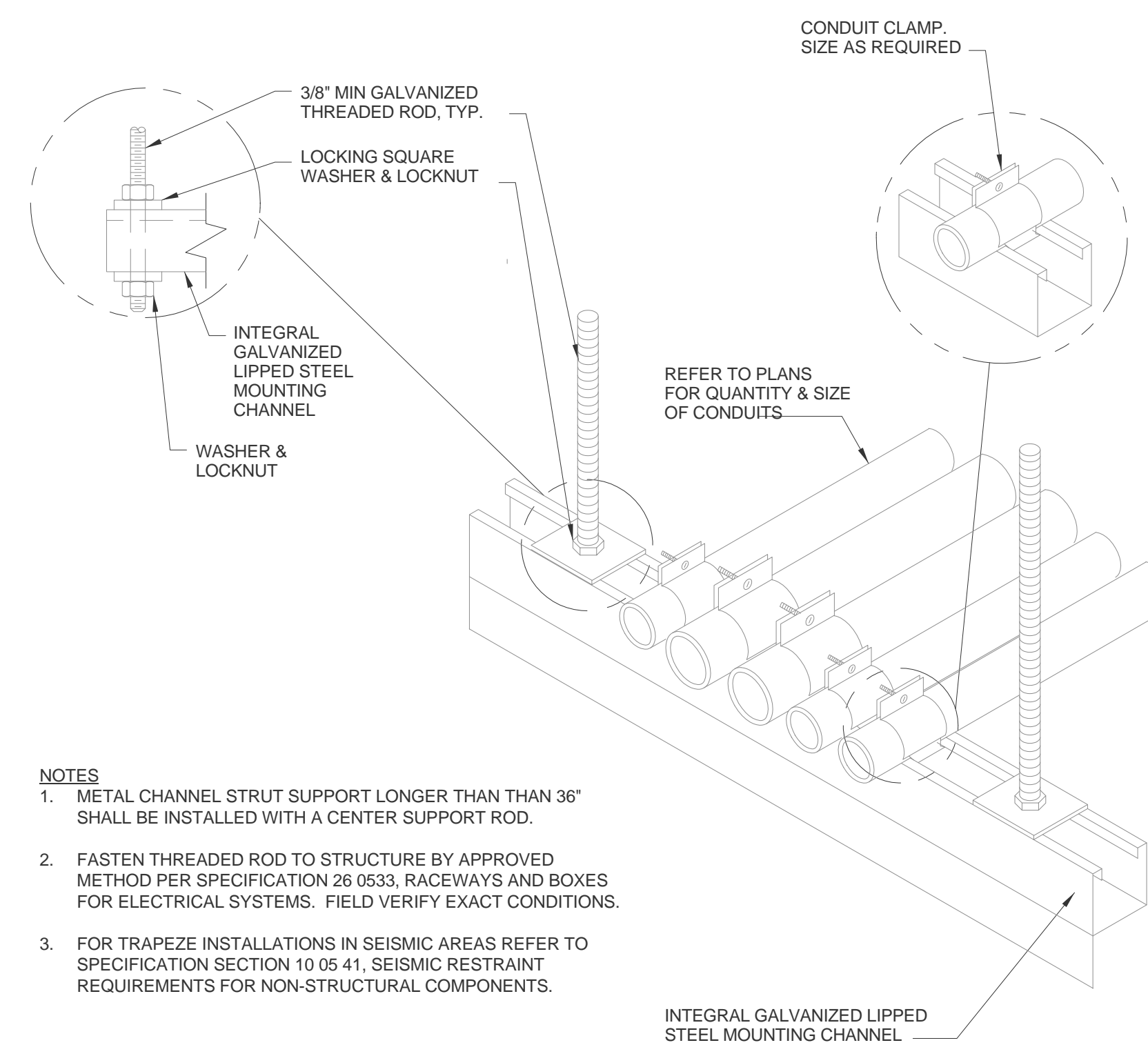
8 FLOOR SLAB PENETRATION DETAIL



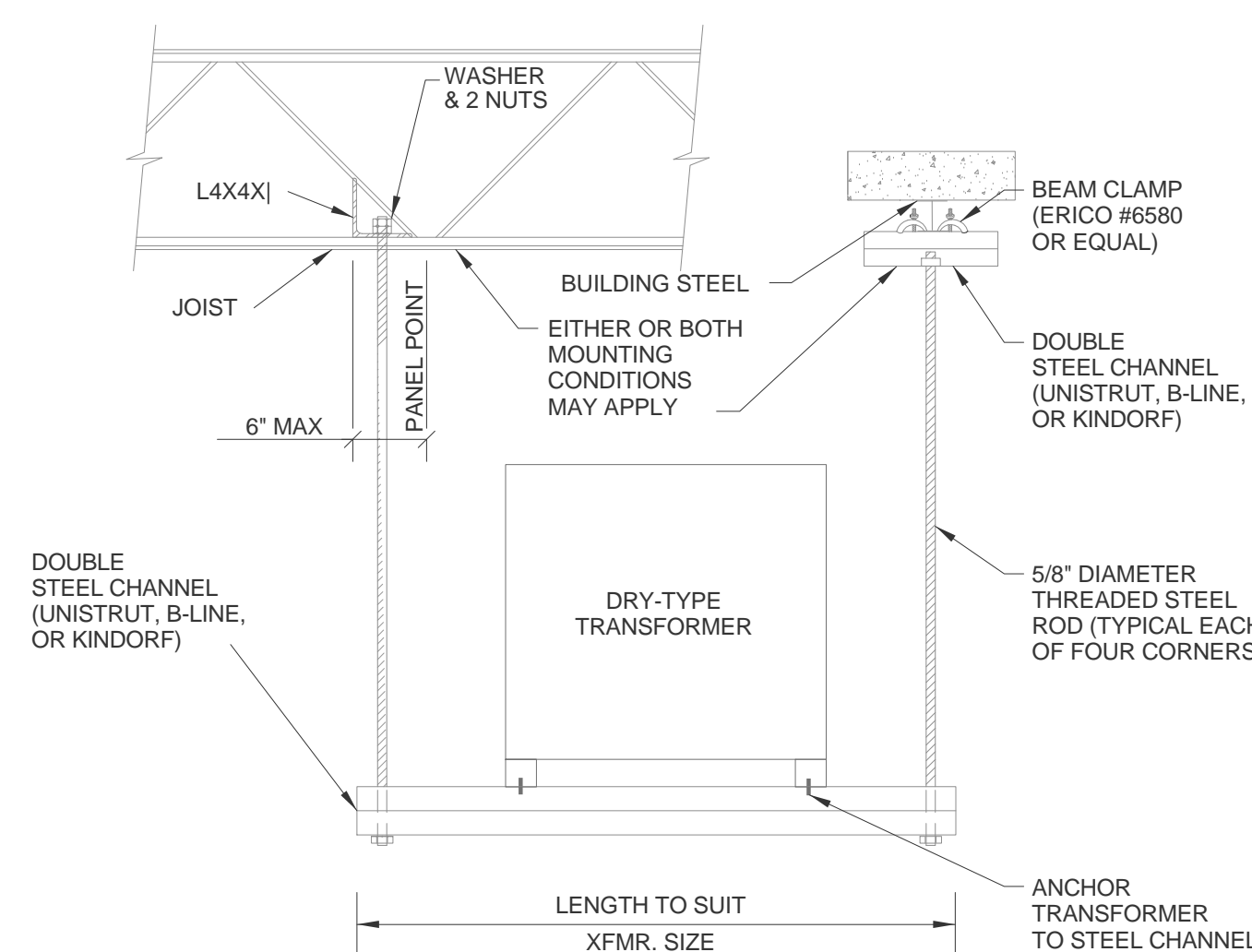
9 RECEPTACLE ROOF MOUNTING DETAIL  
NTS



10 ROOF CONDUIT SUPPORT DETAIL



11 CONDUIT TRAPEZE MOUNTING DETAIL  
NTS



12 TRANSFORMER TRAPEZE MOUNTING DETAIL

[illegible]

ARCHITECT:

C.C. HODGSON  
ARCHITECTURAL GROUP



ENGINEERS:

Westlake  
Reed  
Leskosky

1634 EYE ST, NW, STE 900  
WASHINGTON, DC 20006

Drawing Title

ELECTRICAL DETAILS

Approved: Project Director

|               |  |
|---------------|--|
| Project Title |  |
|---------------|--|

|               |                        |
|---------------|------------------------|
| Project Title | RELOCATE DEMENTIA UNIT |
|---------------|------------------------|

|                |  |
|----------------|--|
| Project Number |  |
|----------------|--|

VA PN 613-207

Building Number  
513

|  |                |
|--|----------------|
|  |                |
|  | Drawing Number |

E-502

Days of =

Office of  
Construction  
and Facilities  
Management

