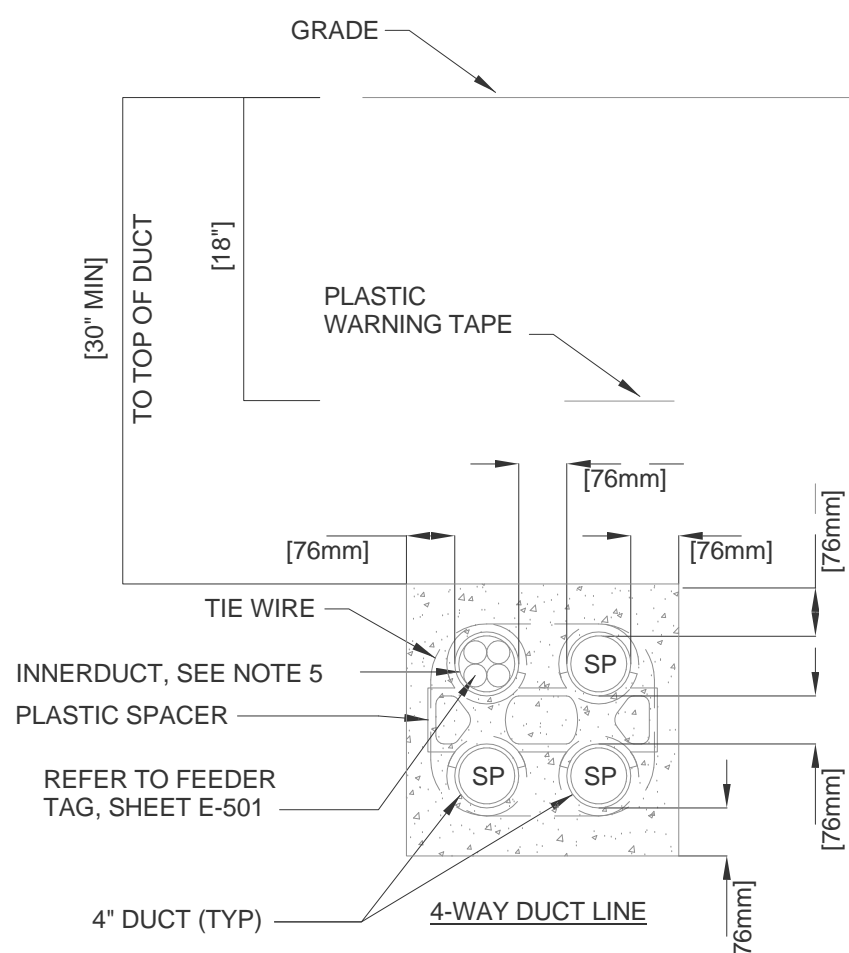


GENERAL NOTES:

1. INCLUDE ALUMINUM LADDER (NOT SHOWN FOR CLARITY)

POWER MANHOLE DETAILS

NTS

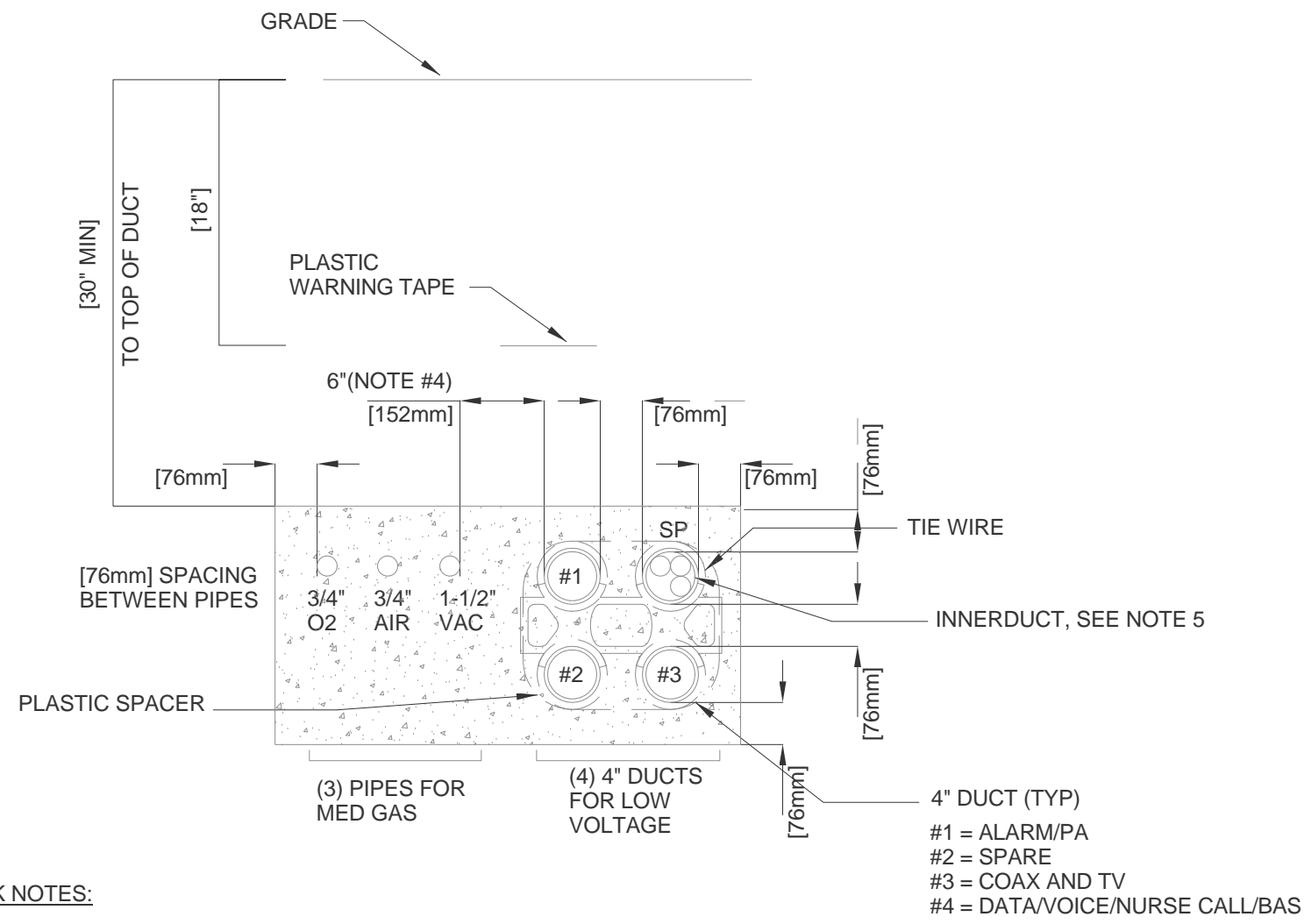


DUCT BANK NOTES:

1. CONCRETE SHALL BE 2000 P.S.I. @ 28 DAYS, OR AS SPECIFIED.
2. PROVIDE REINFORCING RODS ON TOP AND BOTTOM OF DUCTS WHEN CROSSING OR PLACED IN ROADWAYS.
3. MINIMUM COVER TO TOP OF ENVELOPE SHALL BE 24" [610mm].
4. PROVIDE MINIMUM 6" [152mm] SPACE BETWEEN POWER AND TELECOMMUNICATION DUCTS. INCREASE SIZE AS REQUIRED.
5. INNERDUCT QUANTITY AND SIZE AS INDICATED ON PLANS.

DUCT BANK SECTION B-B

NTS

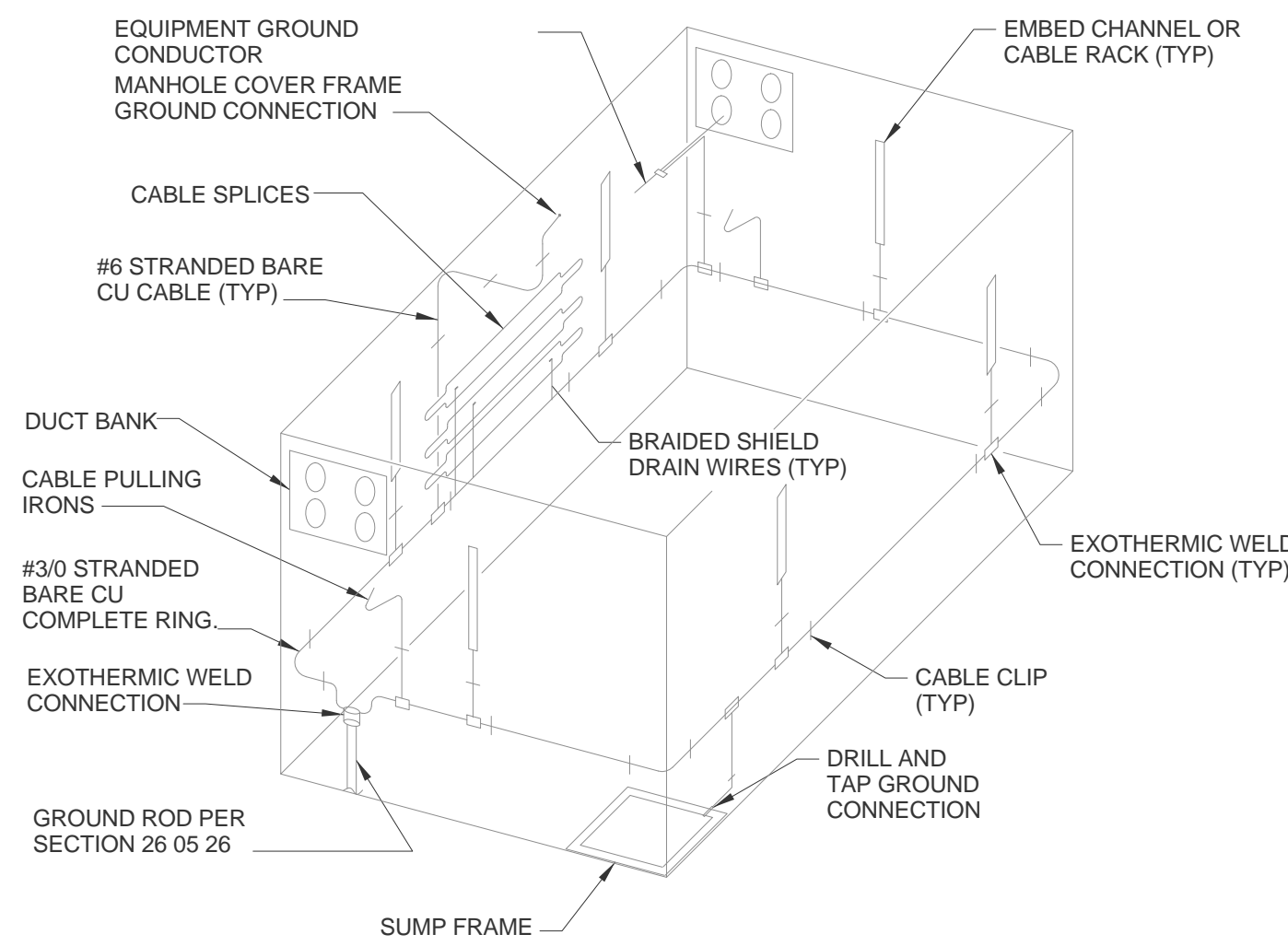


DUCT BANK NOTES:

1. CONCRETE SHALL BE 2000 P.S.I. @ 28 DAYS, OR AS SPECIFIED.
2. PROVIDE REINFORCING RODS ON TOP AND BOTTOM OF DUCTS WHEN CROSSING OR PLACED IN ROADWAYS.
3. MINIMUM COVER TO TOP OF ENVELOPE SHALL BE 24" [610mm].
4. PROVIDE MINIMUM 6" [152mm] SPACE BETWEEN LOW VOLTAGE AND MED GAS DUCTS. INCREASE SIZE AS REQUIRED.
5. PROVIDE 4" 3-CELL MAXCELL INNERDUCT IN EACH DUCT.

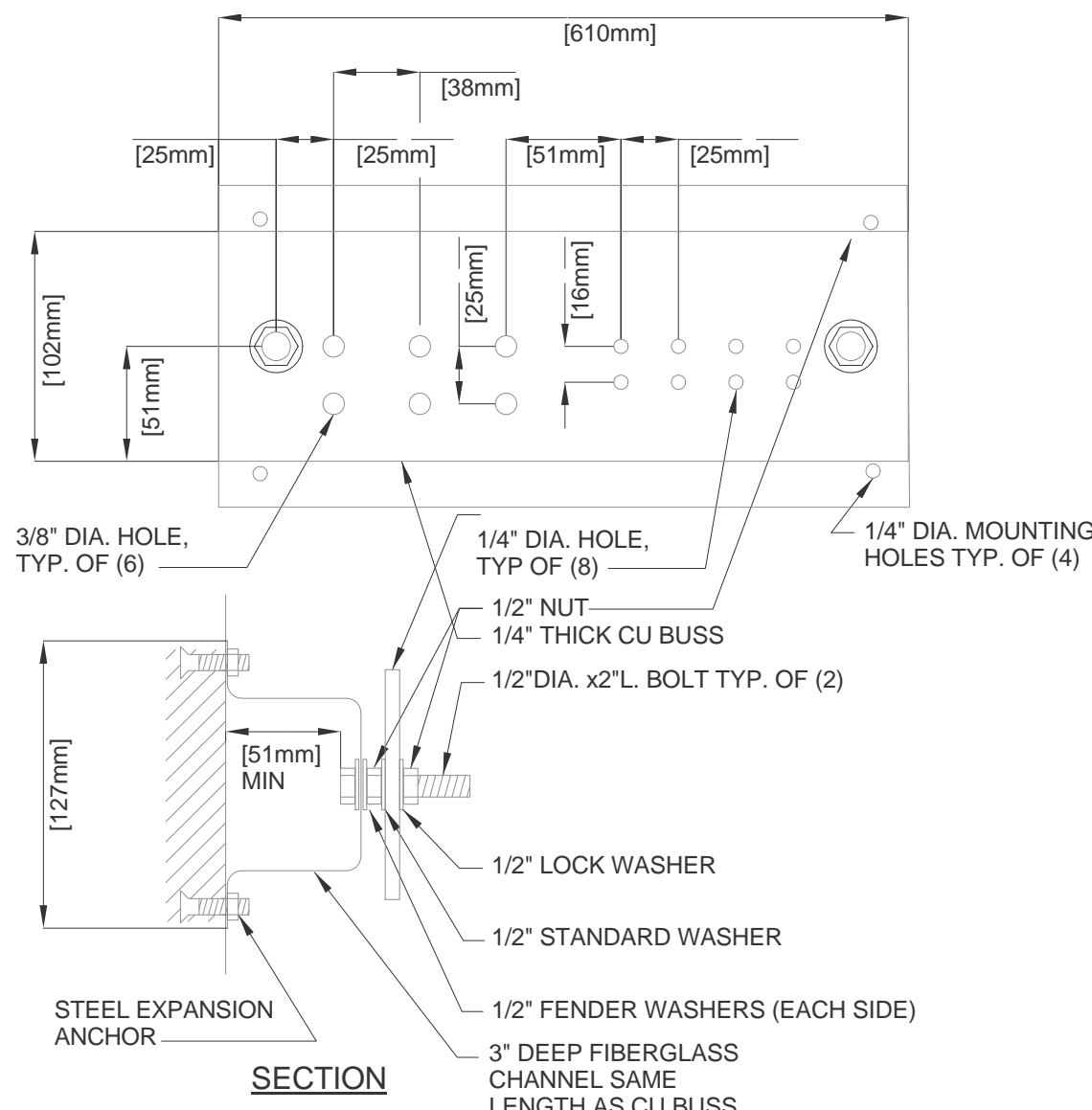
DUCT BANK SECTION D-D

NTS



MANHOLE GROUNDING DETAILS

NTS

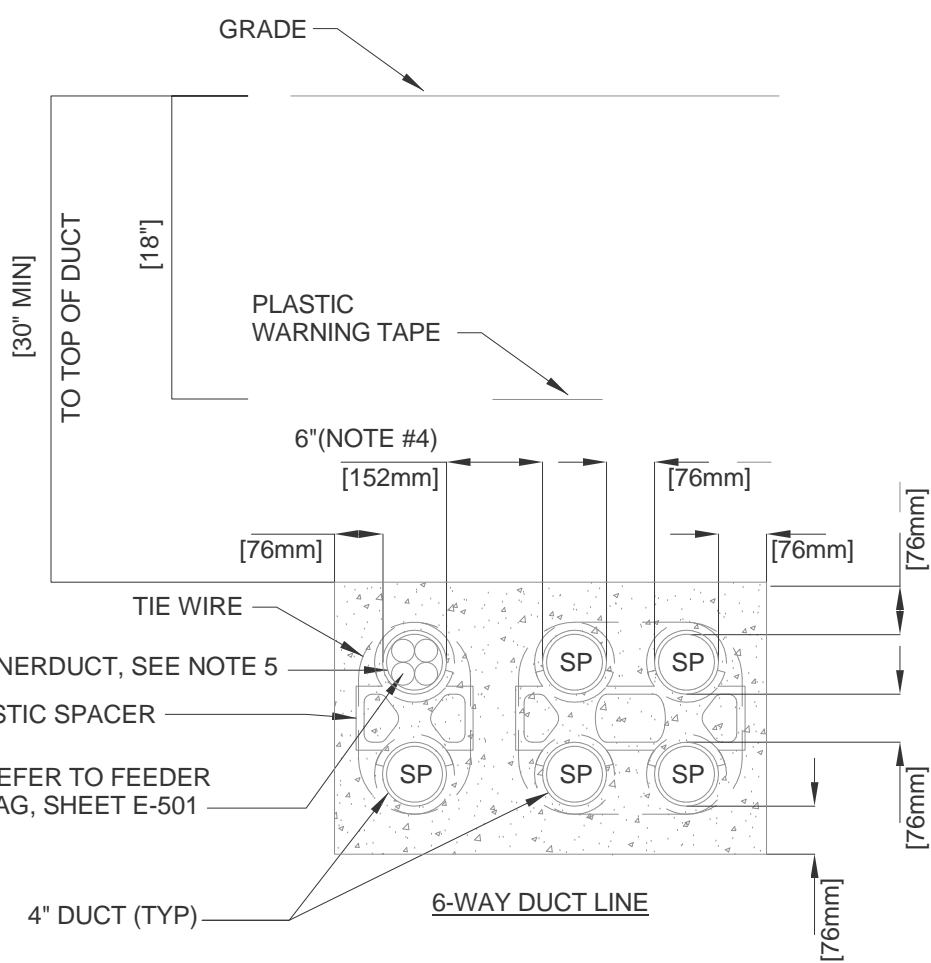


GENERAL NOTES

1. ALL HARDWARE SHOWN SHALL BE STAINLESS STEEL.
2. PROVIDE 1 MOUNTING POINT PER 12" OF BAR LENGTH.
3. HOLES MAY BE ADDED IF REQUIRED.
4. MOUNT 18" AFF FOR ELECTRICAL ROOM APPLICATIONS, MOUNT 7'-0" AFF IN TELECOMM ROOM APPLICATIONS.

GROUNDING BAR DETAIL

NTS

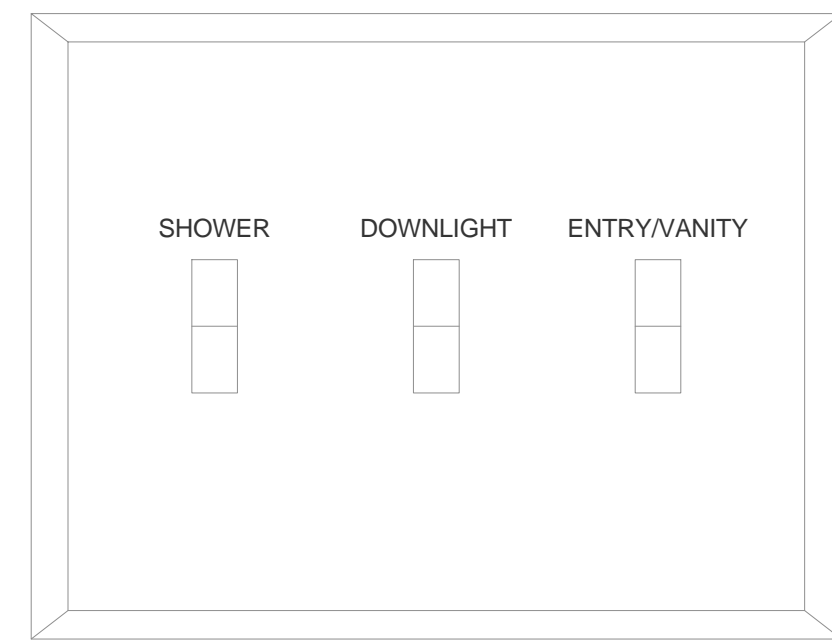


DUCT BANK NOTES:

1. CONCRETE SHALL BE 2000 P.S.I. @ 28 DAYS, OR AS SPECIFIED.
2. PROVIDE REINFORCING RODS ON TOP AND BOTTOM OF DUCTS WHEN CROSSING OR PLACED IN ROADWAYS.
3. MINIMUM COVER TO TOP OF ENVELOPE SHALL BE 24" [610mm].
4. PROVIDE MINIMUM 6" [152mm] SPACE BETWEEN POWER AND TELECOMMUNICATION DUCTS. INCREASE SIZE AS REQUIRED.
5. INNERDUCT QUANTITY AND SIZE AS INDICATED ON PLANS.

DUCT BANK SECTION A-A

NTS



GENERAL NOTES

1. PROVIDE GANGED SWITCHPLATE
2. PROVIDE ENGRAVED LETTERING AS SHOWN.

PATIENT BATHROOM GANGED SWITCH

NTS

Revisions:	Date

ARCHITECT:

C.C. HODGSON  
ARCHITECTURAL GROUP



ENGINEERS:

Westlake  
Reed  
Leskosky

1634 EYE ST, NW, STE 900  
WASHINGTON, DC 20006

Drawing Title

ELECTRICAL DETAILS

Approved: Project Director

Project Title

RELOCATE DEMENTIA UNIT

Location

VAMC MARTINSBURG

Date

08/06/2012

Checked

GSL

Drawn

DRW

Project Number

VA PN 613-207

Building Number

513

Drawing Number

E-503

Dwg. of --

Office of  
Construction  
and Facilities  
Management



Department of  
Veterans Affairs