

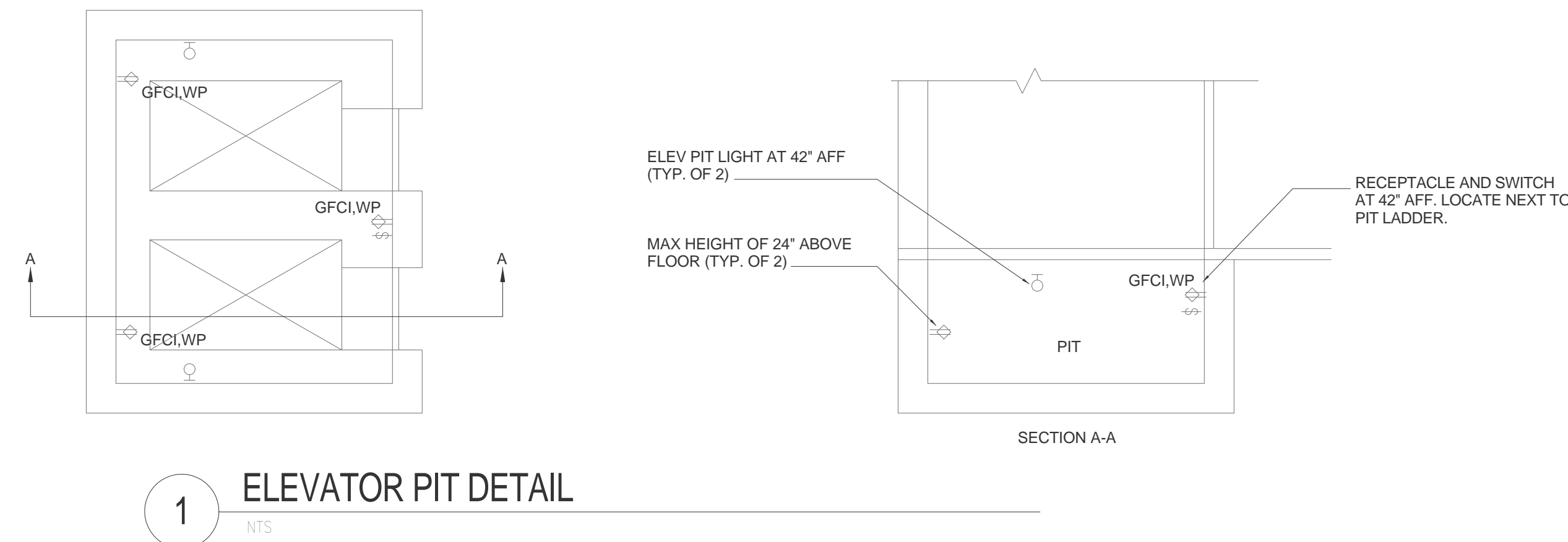
Key Notes (N) INDICATES KEY NOTE ON THIS SHEET.

- GROUNDING ELECTRODE CONDUCTOR SIZED PER NEC ARTICLE 250, TABLE 250.66. SEE SHEET E501 FOR SIZE.
- INCOMING SERVICE ENTRANCE CONDUCTORS FROM SUBSTATION TRANSFORMER WITH GROUNDED WYE SECONDARY CONTAINING GROUNDED (NEUTRAL) CONDUCTOR.
- MAIN EQUIPMENT BONDING JUMPER SIZED PER NEC ARTICLE 250, TABLE 250.66.
- EQUIPMENT BONDING CONDUCTOR SIZED PER NEC ARTICLE 250, TABLE 250.66. PROVIDE
- GROUNDING CLAMP - ILSCO TYPE "AGC"
- CADWELD TYPE "GY" CONNECTION.
- EXOTHERMICALLY WELDED CONNECTION, CADWELD TYPE "VB".
- PROVIDE GENERATOR GROUNDING ELCTRODE CONDUCTOR: #3/0 CU
- PROVIDE 3/4" X 10'-0" COPPERWELD GROUND ROD SPACED 10' APART AND CONNECTED WITH #3/0 CU GROUNDING ELECTRODE CONDUCTOR.
- REFER TO SHEET E501 FOR SIZE.
- PROVIDE 3/4" X 10'-0" COPPERWELD GROUND ROD SPACED 10' APART AND CONNECTED WITH #3/0 CU GROUNDING ELECTRODE CONDUCTOR.
- PROVIDE #3/0 CU GROUNDING CONDUCTOR.

1 GROUNDING SYSTEM DETAIL
NTS

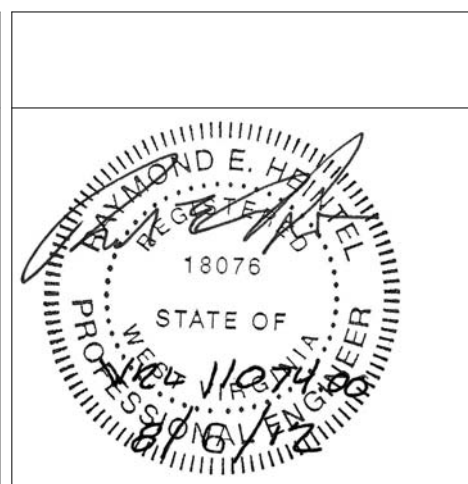
Key Notes (E) INDICATES KEY NOTE ON THIS SHEET. (8-19)

- BASE PLATE NUT AND ANCHOR BOLT INTO REINFORCED CONCRETE PIER OR FOOTING. ANCHOR BOLT BONDED TO CONCRETE REINFORCING.
- 10' X 3/4" COPPER-CLAD GROUND ROD.
- REFER TO STRUCTURAL DWGS. FOR EXPOSED STEEL FRAMING LOCATIONS. BOND PER NEC ARTICLE 250.104.C.
- EQUIPMENT GROUNDING CONDUCTOR SIZED PER NEC ARTICLE 250, TABLE 250.122.
- GROUNDED (NEUTRAL) CONDUCTOR, SIZE AS INDICATED ON RELATED PLANS.
- COUNTERPOISE GROUNDING CONDUCTOR AT 30" BELOW FINISHED GRADE.
- LIGHTNING PROTECTION SYSTEM DOWNLEAD CONDUCTOR.
- REBAR ENCASED IN CONCRETE, MINIMUM 20 FOOT LENGTH, INSTALLED PER NEC ARTICLE 250.52.
- TELECOMM BONDING BACKBONE INTERCONNECTING BONDING CONDUCTOR. REFER TO TE-SERIES SHEETS FOR SIZE.
- TELECOMM BONDING BACKBONE. REFER TO TE-SERIES SHEETS FOR SIZE.
- TELECOMM BONDING CONDUCTOR. REFER TO TE-SERIES SHEETS FOR SIZE.
- TELECOMM GROUNDING CONDUCTOR TO BUILDING GROUND. REFER TO TE-SERIES SHEETS FOR SIZE.



Revisions:	Date

ARCHITECT:
C.C. HODGSON ARCHITECTURAL GROUP



ENGINEERS:
Westlake Reed Leskosky
1634 EYE ST, NW, STE 900 WASHINGTON, DC 20006

Drawing Title
ELECTRICAL DETAILS
Approved: Project Director

Project Title
RELOCATE DEMENTIA UNIT
Project Number
VA PN 613-207
Building Number
513
Location
VAMC MARTINSBURG
Date
08/06/2012
Checked
GSL
Drawn
DRW
Drawing Number
E-504
Dwg. of
--

Office of Construction and Facilities Management
Department of Veterans Affairs