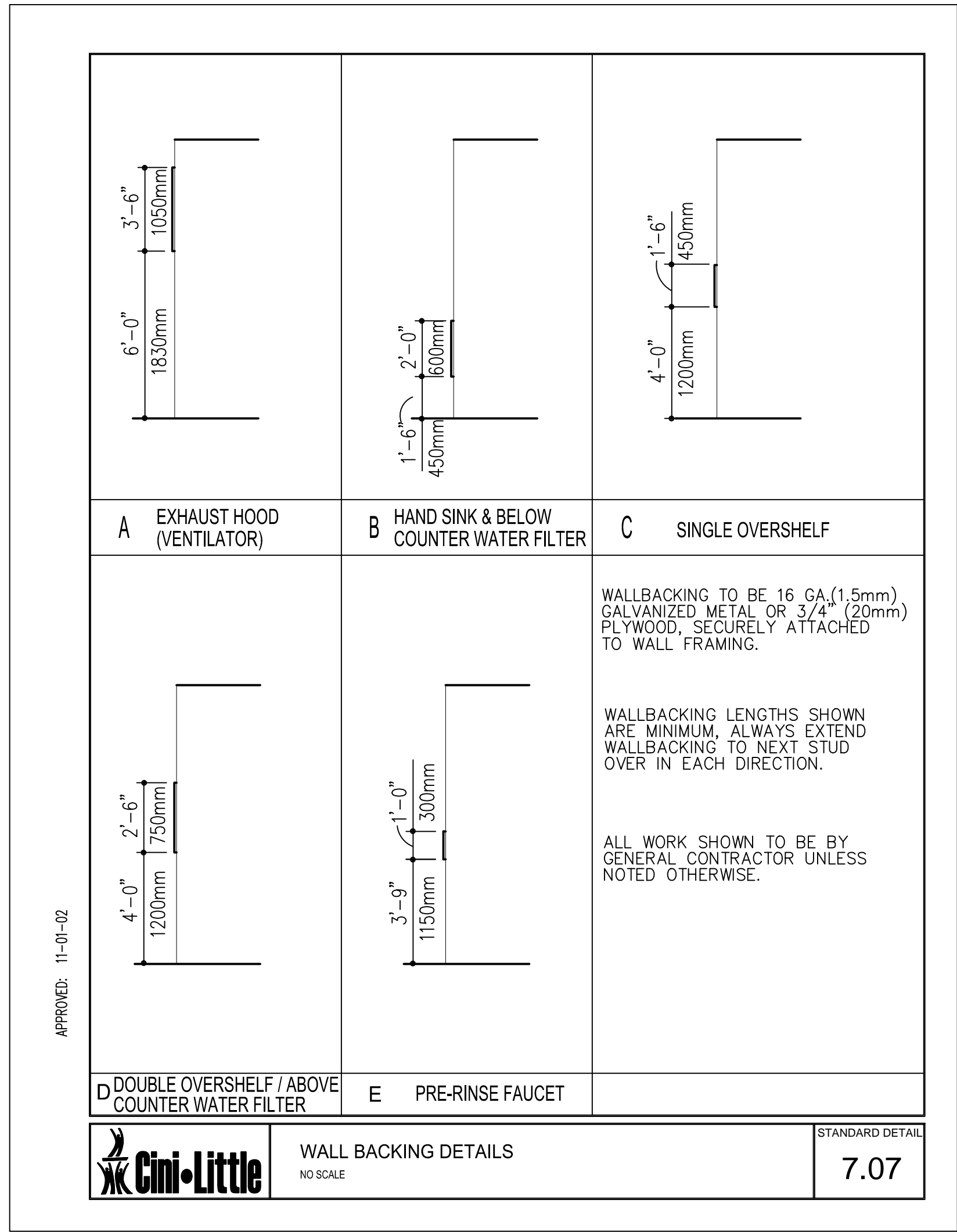
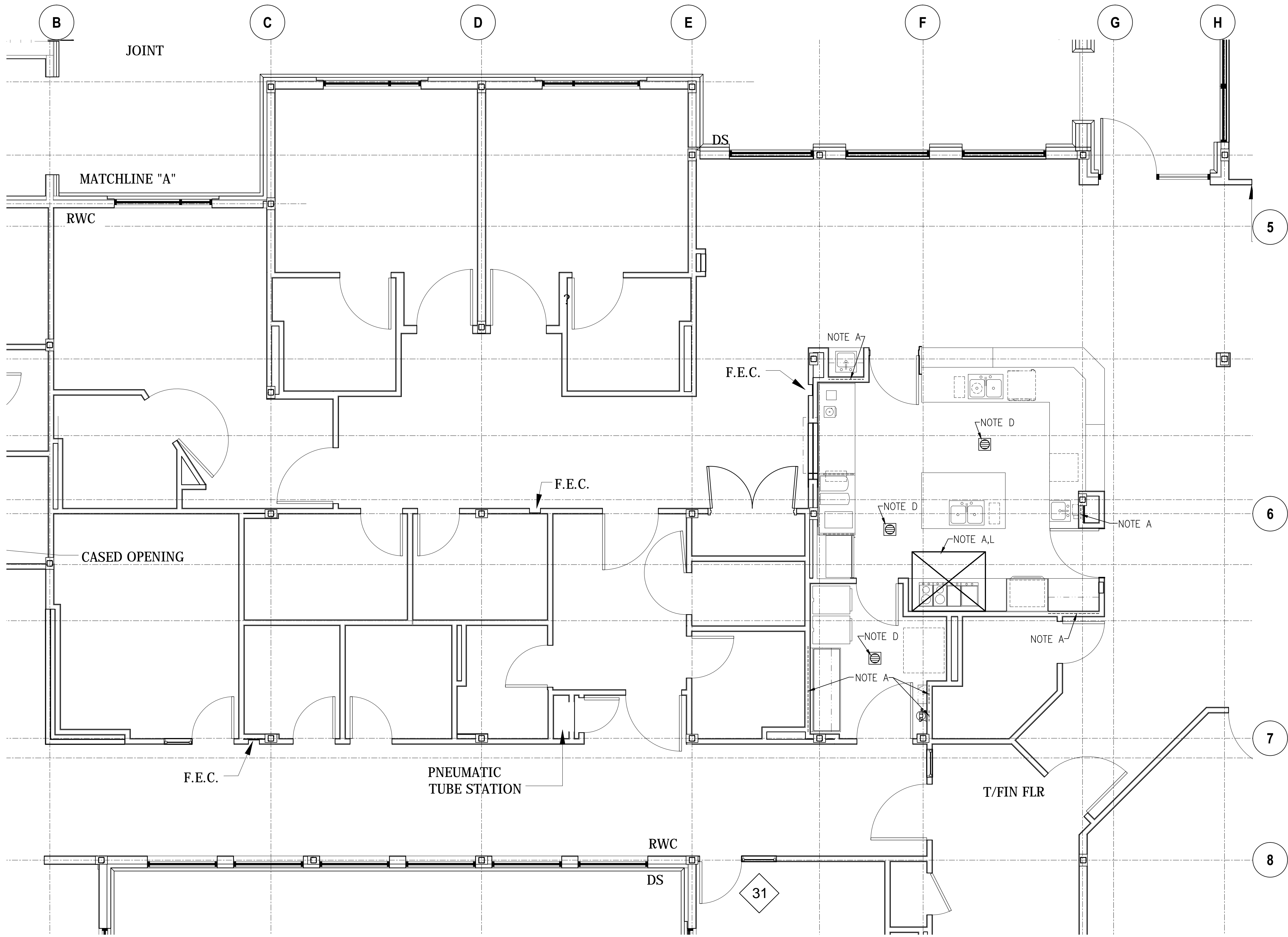


one and one half inches = one foot
one inch = one foot
three quarters inch = one foot
one half inch = one foot
one quarter inch = one foot
one eighth inch = one foot



SPECIAL CONDITIONS NOTES

- NOTE A:** CONTRACTOR SHALL ENSURE ALL WALLS AND/OR CEILINGS ARE PROPERLY REINFORCED TO SUPPORT ALL WALL AND/OR CEILING SUPPORTED EQUIPMENT AS PER DETAIL 7.07.
- NOTE B:** NOT USED.
- NOTE C:** NOT USED.
- NOTE D:** CONTRACTOR SHALL PITCH FLOOR TO AREA FLOOR DRAINS PER ARCHITECTS DRAWINGS.
- NOTE E:** NOT USED.
- NOTE F:** NOT USED.
- NOTE G:** NOT USED.
- NOTE H:** NOT USED.
- NOTE I:** NOT USED.
- NOTE J:** NOT USED.
- NOTE K:** NOT USED.
- NOTE L:** CONTRACTOR SHALL VERIFY INSTALLATION HEIGHT OF FINISHED CEILING WITH FOODSERVICE EQUIPMENT BELOW AS SHOWN.
- NOTE M:** CONTRACTOR SHALL ENSURE STRUCTURAL FLOOR IS ADEQUATE TO SUPPORT HEAVY EQUIPMENT SUCH AS PIZZA OVEN, ICE MAKER AND REMOTE REF. SYSTEM.
- NOTE N:** NOT USED.
- NOTE O:** NOT USED.
- NOTE P:** KEC TO COORDINATE ALL EQUIPMENT LEGS WITH FLOOR DRAIN AND FLOOR TROUGH LOCATIONS.



BID DOCUMENTS
FULLY SPRINKLERED

		CONSULTANTS:		ARCHITECT/ENGINEERS:		Drawing Title		Project Title		Project Number		Office of Construction and Facilities Management
		 CINILITTLE INTERNATIONAL, INC. 20251 CENTURY BOULEVARD, SUITE 375 GERMANTOWN, MD 20874-1114 USA 301-528-9700 OFFICE 301-528-9711 FAX www.cinilittle.com				Foodservice Equipment Special Conditions Plan		RELOCATE DEMENTIA UNIT		VA PN 613-107		
						Approved: Project Director		Location VAMC MARTINSBURG		Building Number 513		
						Date 8/6/2012		Checked LKL		Drawn CAD		
										Drawing Number QF104		
										Dwg. of --		