

**SECTION 09 06 00
SCHEDULE FOR FINISHES**

PART I - GENERAL

1.1 DESCRIPTION

This section contains a coordinated system in which requirements for materials specified in other sections shown are identified by abbreviated material names and finish codes in the room finish schedule or shown for other locations.

1.2 MANUFACTURERS

Manufacturer's trade names and numbers used herein are only to identify colors, finishes, textures and patterns. Products of other manufacturer's equivalent to colors, finishes, textures and patterns of manufacturers listed that meet requirements of technical specifications will be acceptable upon approval in writing by contracting officer for finish requirements.

1.3 SUBMITALS

Submit in accordance with SECTION 01 33 23, SHOP DRAWINGS, PRODUCT DATA, AND SAMPLES—provide quadruplicate samples for color approval of materials and finishes specified in this section.

1. COLOR SLIDES-INTERIOR VIEWS:

| Room Number and Name | Item/View to be Photographed |
|---|------------------------------|
| 1. Rendering: Perspective looking North/West | |
| 2. Rendering: View of East Patio at Entry | |
| 3. Rendering: View of Resident Living, Dining, Activity | |
| 4. Rendering: View of Resident Living, Dining, Activity | |

| | |
|---|--|
| 5. Rendering: View of Resident Living, Dining, Activity | |
| 6. Rendering: View of Resident Bedroom | |
| 7. Rendering: View of Resident Bedroom | |

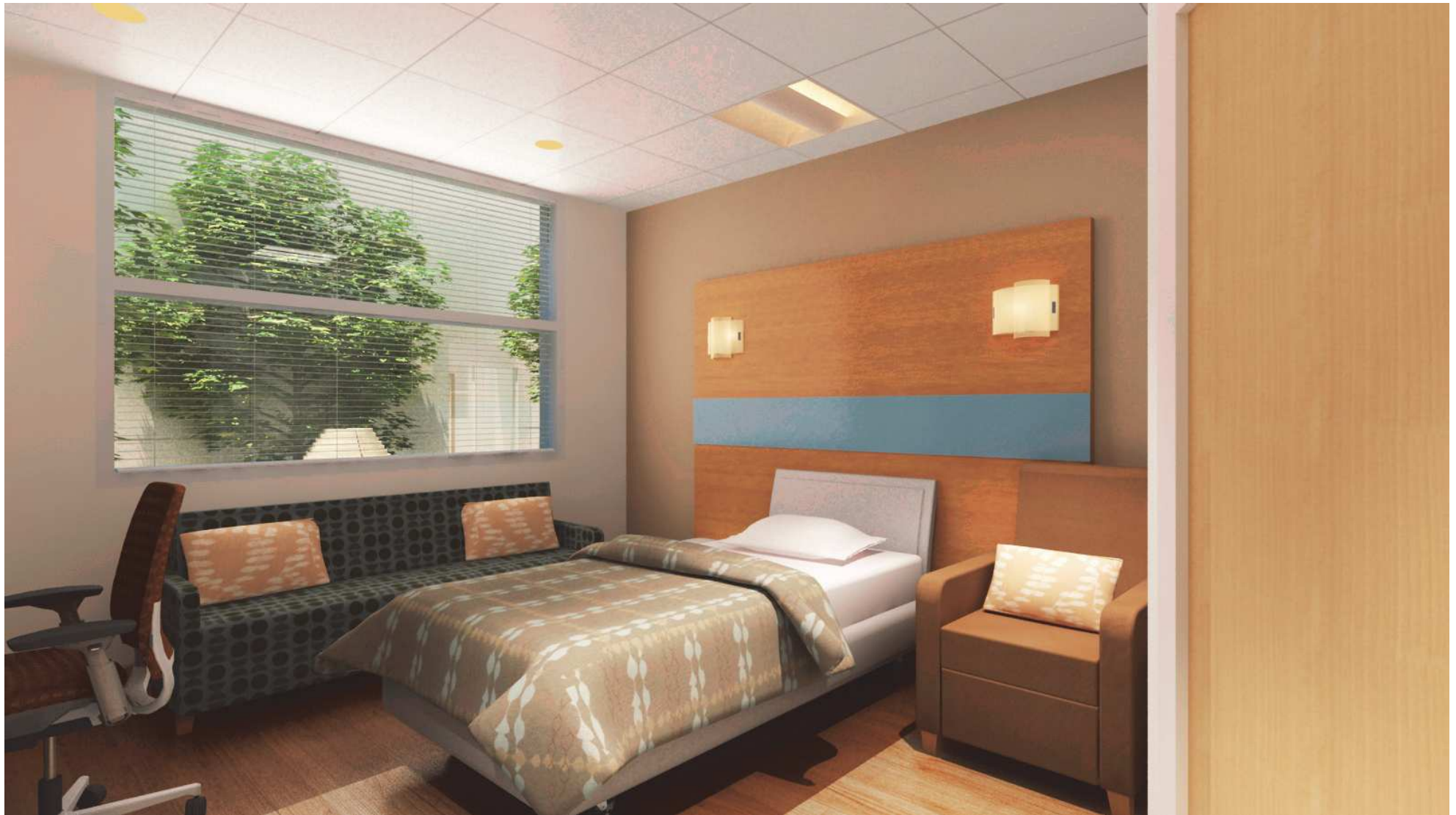














1.4 APPLICABLE PUBLICATIONS

A. Publications listed below form a part of this specification to the extent referenced. Publications are referenced in text by basic designation only.

B. MASTER PAINTING INSTITUTE: (MPI)

2001.....Architectural Painting Specification Manual

PART 2- PRODUCTS

2.0 DIVISION 03 - CONCRETE

A. SECTION 03 33 00, Architectural Concrete

| Material | Location | Size / Finish |
|----------------------|--|---|
| Concrete Wall | Exterior stem wall / Base of Building | Sacked and painted, refer to 090600 2.5J 099100 for color |
| Concrete Patio | Patio slab on grade | Sacked and painted, refer to 090600 2.5J 099100 for color |
| Concrete Courtyard | Courtyard slab on grade | Sacked and painted, refer to 090600 2.5J 099100 for color |
| Concrete Fountain | Courtyard / Patio | Sacked and painted, refer to 090600 2.5J 099100 for color |
| Concrete ramp/stairs | Entry, south doors | Sacked and painted, refer to 090600 2.5J 099100 for color |

2.1 DIVISION 05 - METALS

A. SECTION 05 05 00, ADHESIVE AND MECHANICAL FASTENERS

| Item: | Manufacturer: | Product: |
|-------------------------------|--------------------|------------------------------|
| Adhesives for use in Concrete | Hilti | HIT RE-500-SD (ICC ESR 2322) |
| | Simpson Strong-Tie | SET-XP (ICC ESR 2508) |

| | | |
|--------------------------------------|--------------------|-------------------------------------|
| Adhesives for use in Masonry | Hilti | HY 150 MAX (ICC ESR 1967) |
| | Simpson Strong-Tie | Epoxy-Tie SET (ICC ESR 1772) |
| Mechanical Wedge Anchors in Concrete | Hilti | Kwik Bolt TZ (KB-TZ) (ICC ESR 1917) |
| | Simpson Strong-Tie | Strong-Bolt (ICC ESR 1771) |
| Mechanical Wedge Anchors in Masonry | Hilti | Kwik Bolt 3 (KB-3) (ICC ESR 1385) |
| | Simpson Strong-Tie | Wedge-All (ICC ESR 1396) |

B. SECTION 05 36 00, COMPOSITE METAL DECKING

| |
|--------------------------|
| Manufacturer: |
| Verco Manufacturing, Co. |
| ASC Profiles |
| Deck West, Co. |

Note: Deck and shear resistant angle manufacturer to be the same.

C. SECTION 05 40 00, COLD-FORMED METAL FRAMING

| |
|---|
| METAL FRAMING, CONNECTORS, AND ACCESSORIES: |
| Manufacturer: |
| Dietrich Metal Framing |
| The Steel Network, Inc. |
| Cemco |
| Simpson Strong-Tie |

| |
|--|
| SELF-DRILLING, SELF-TAPPING SCREWS, BOLTS, NUTS AND WASHERS: |
|--|

COMMUNITY LIVING CENTER (CLC)
 VA SIERRA NEVADA HEALTH CARE SYSTEM
 RBB PROJECT #1017200

VA PROJECT #654-317
 VA CONTRACT #VA 261-P-0933

| Manufacturer: | Product: |
|-------------------------------|----------|
| Grabber Construction Products | Grabber |
| ITW Buildex | TEKS |
| Compass International | DARTS |

D. SECTION 05 52 13, PIPE AND TUBE RAILINGS, SECTION 05 73 16, DECORATIVE METAL RAILING

| LEGEND | Location | Manufacturer: | Size / Finish |
|--------|------------------------------|------------------------------|--|
| HR-01 | Exterior Ramps | | 1 ½" dia. Satin, Brushed, Stainless Steel |
| | Stair Handrails | | 1 ½" dia. Satin, Brushed, Stainless Steel |
| | Stair Railing top and bottom | | Thickened steel bar per dimensions on details, sheet AE820; appearance grade finish |
| GR-01 | Stair Railing | Diamond Perforated Metal Co. | Model No. 625-875-SQ2 5/8" squares on 7/8" centers, straight pattern Finish: Perforated Panel - Brushed stainless steel appearance grade 11 gauge |

2.3 DIVISION 07 - THERMAL AND MOISTURE PROTECTION

A. SECTION 07 13 52, MODIFIED BITUMINOUS SHEET WATERPOOFING; 07 46 16 COLD FLUID APPLIED WATERPROOFING

| Type | Location | Manufacturer | Mfg. Product Name/No. |
|------|--|--------------|--------------------------|
| | Vertical and horizontal at face of wall at patio w/protection course | W.R. GRACE | Bituminous W.P. Membrane |
| | Above slab at Patio below geocomposite-drainage sheet below self-leveling pavers | W.R. GRACE | Procur |
| | Below slab and footings | W.R. GRACE | Preprufe 300r |

B. SECTION 07 42 13, METAL WALL PANELS

| Type | Shape | Ext. Finish | Int. Finish | Manufacturer | Mfg. Color Name/No. |
|---|--------------|---|-------------------------|--------------|--------------------------|
| MP-1 Insulated Metal Panels - TYPE 1 | Per Drawings | 3-COAT FLUROPOLYMER; PROFILE: FLAT TEXTURE: SMOOTH | 3-COAT FLUROPOLYMER; | KINGSPAN | DURANAR BEIGE UC54137 |
| MP-2 Insulated Metal Panels - TYPE 2 | Per Drawings | 3-COAT FLUROPOLYMER; PROFILE: STRIATED, HORIZONTAL TEXTURE: SMOOTH | 3-COAT FLUROPOLYMER; | KINGSPAN | DURANAR ROSEWOOD UC56785 |
| MP-3 Insulated Metal Panels - TYPE 3 | Per Drawings | 3-COAT FLUROPOLYMER; PROFILE: STRIATED, HORIZONTAL TEXTURE: SMOOTH | 3-COAT FLUROPOLYMER; | KINGSPAN | DURANAR BEIGE UC54137 |
| MP-4 | Per Drawings | 3-COAT | 3-COAT | KINGSPAN | DURANAR SILVER UC51131XL |

COMMUNITY LIVING CENTER (CLC)
 VA SIERRA NEVADA HEALTH CARE SYSTEM
 RBB PROJECT #1017200

VA PROJECT #654-317
 VA CONTRACT #VA 261-P-0933

| | | | | | |
|---------------------------------|--|---|---------------|--|--|
| Insulated Metal Panels - TYPE 4 | | FLUROPOLYMER; PROFILE: FLAT TEXTURE: SMOOTH | FLUROPOLYMER; | | |
|---------------------------------|--|---|---------------|--|--|

C. SECTION 07 54 19, POLYVINYL CHLORIDE PVC ROOFING

| Coating Material | Color | Manufacturer | Mfg. Color Name/No. |
|---------------------------------|-------|--------------|---------------------|
| Single ply PVC roofing membrane | WITE | Sarnafil | |
| | | | |

D. SECTION 07 57 13, SPRAYED POLYURETHANE FOAM ROOFING

| Coating Material | Color | Manufacturer | Mfg. Color Name/No. |
|---|-------------------------------|--------------|---------------------|
| Silicone Rubber Elastomeric Protective Coating 2-coat | Light tone - white/light gray | | |
| Ceramic Granules | | | |

E. SECTION 07 60 00, FLASHING AND SHEET METAL

| Item | Material | Finish |
|---------------------------------------|--------------------------|---|
| Copings | Powder coated steel | Match Insulated Metal Panels |
| Roof Insulated Expansion Joint Covers | Construction Specialties | Construction Specialties Model per drawings |
| Overflow scupper | BOD Model: Zurn Z199 | Nickel Bronze Finish |

F. SECTION 07 71 00 / 07 72 00, ROOF SPECIALITIES AND ACCESSORIES

COMMUNITY LIVING CENTER (CLC)
 VA SIERRA NEVADA HEALTH CARE SYSTEM
 RBB PROJECT #1017200

VA PROJECT #654-317
 VA CONTRACT #VA 261-P-0933

| Item | Material | Finish | Manufacturer | Manufacturer/Color Name/Number. |
|--------------------------------|-------------------|--------------|--------------------------|---------------------------------|
| Roof Ladder | Steel | Galvanized | | |
| Equipment Support | Galv. Steel | Galvanized | | |
| Copings | Steel | Powdercoated | | MATCH METAL PANEL FINISH/COLOR |
| Gravel Stops and Fascia System | Galv steel | Galvanized | | |
| Fascia Systems | Galv steel | Galvanized | | |
| Roof Expansion Joint Covers | Extruded Aluminum | Mill | Construction Specialties | SRJ/SRJW |

G. SECTION 07 87 00, SMOKE CONTAINMENT SYSTEM

| Item | Location | Manufacturer | Mfg. Color Name/No. |
|-------------------------------|-----------------------------------|--------------------|---|
| Cross Corridor Accordion Door | Cross corridor smoke compartments | Won-Door FireGuard | Fire Guard FG-90 Slim Drive Cross Corridor Accordion Door 1 1/2 hour rating |

H. SECTION 07 92 00, JOINT SEALANTS

| Location | Color | Manufacturer | Manufacturer Color |
|---------------------|---------------------------|--------------|--------------------|
| Metal Panel joints | Custom match metal panels | | |
| Curtain wall joints | Custom match metal panels | | |
| | | | |
| | | | |

I. SECTION 07 95 13, EXPANSION JOINT COVER ASSEMBLIES

| Location | Material | Finish | Manufacturer | Mfg. Color Name/No. |
|--|----------------------------|--------|-----------------------------|--|
| Floor Component Cover Plate Frame Casket or Sealant (interior only) | | | Construction Specialties | Construction Specialties Model SJPF / color to match adj finish |
| Wall Component Cover Plate Frame Casket or Sealant (interior only) | | | Construction Specialties | Construction Specialties Model SFW / color to match adj finish |
| Ceiling Component Cover Plate, Gasket or Sealant (interior only) | Gyp Board Ceiling | | Construction Specialties | Construction Specialties Model SFC/ color to match adj finish |
| Ceiling Component Cover Plate, Gasket or Sealant (interior only) | Acoustical Tile Ceiling | | Construction Specialties | Construction Specialties Model fcf/ color to match adj finish |
| Exterior Wall Thermoplastic Joint | | | Construction Specialties | Construction Specialties Model SC / color to match metal panel |
| | | | | |

2.4 DIVISION 08 - OPENINGS

A. SECTION 08 11 13, HOLLOW METAL DOORS AND FRAMES

| Paint both sides of door and frames same color including ferrous metal louvers, and hardware attached to door | |
|---|-------------------------------|
| Component | Color of Paint Type and Gloss |
| Door | Paint to match adjacent wall |
| Frame | Paint to match adjacent wall |
| Window frame | N/A |

B. SECTION 08 14 00, WOOD DOORS

| Component | Finish/Color |
|-----------|--|
| Doors | FSC Certified Quartersawn sliced white maple wood veneer with clear satin finish |
| Frames | Hollow Metal Door Frames painted to match adjacent wall paint color |

C. SECTION 08 31 13, ACCESS DOORS AND FRAMES

| Material | Finish/Color |
|----------|--------------------------------|
| Steel | Paint to match adjacent finish |

C. SECTION 08 44 13, ALUMINUM-FRAMED ENTRANCES AND CURTAINWALLS

| Material | Finish | Manufacturer / Model | Manufacturer Color |
|----------|--------|----------------------|--------------------|
|----------|--------|----------------------|--------------------|

COMMUNITY LIVING CENTER (CLC)
VA SIERRA NEVADA HEALTH CARE SYSTEM
RBB PROJECT #1017200

VA PROJECT #654-317
VA CONTRACT #VA 261-P-0933

| | | | Name/No. |
|--|---------------------|------------------------------------|--------------------------|
| Exterior Aluminum Stile Automatic Storefront Doors | 3-COAT FLUROPOLYMER | Kawneer 350HW MED STILE | DURANAR SILVER UC51131XL |
| Interior Aluminum Mullion system | 3-COAT FLUROPOLYMER | Kawneer 450 System - center glazed | DURANAR SILVER UC51131XL |
| Exterior Aluminum Storefront Doors | 3-COAT FLUROPOLYMER | Kawneer 1600 System | DURANAR SILVER UC51131XL |
| Exterior Aluminum Storefront w/integral blinds at punched openings | 3-COAT FLUROPOLYMER | Kawneer 1600 System | DURANAR SILVER UC51131XL |
| Exterior Aluminum Sunshades | 3-COAT FLUROPOLYMER | Kawneer Custom | DURANAR SILVER UC51131XL |
| Bend 1/8", Preformed exterior aluminum filler panel at east wall. | 3-COAT FLUROPOLYMER | Kawneer Custom | DURANAR SILVER UC51131XL |

D. SECTION 08 71 00, BUILDERS HARDWARE

| Item | Material | Finish |
|------------------|---------------------------|-----------|
| Hinges | Steel and stainless steel | 652 & 630 |
| Door Closers | Cast Iron | 652 |
| Floor Closers | Steel | 626 |
| Floor Pivot Sets | Bronze | 626 |
| Closer/ Holder | Cast Iron | 652 |
| Floor Stops | Wrought steel | 626 |
| Door Holders | Steel | 626 |
| Lock/ Latches | Bronze | 626 |

| | | |
|-----------------------------|------------------------|-----|
| Key Cabinet | Steel | |
| Armor Plates | Stainless steel | 630 |
| Kick Mop Plates | Stainless steel | 630 |
| Door Edging | Stainless steel | 630 |
| Exit Device | Aluminum | 628 |
| Flush Bolts | Steel | 626 |
| Door Pulls | Stainless steel | 630 |
| Push Plates | Stainless steel | 630 |
| Combination Push Pull Plate | Stainless steel | 630 |
| Coordinators | Steel | 600 |
| Light Proof Seals | Aluminum with silicone | AL |
| Weather Strip | Silicone | |
| Threshold | Aluminum | AL |

E. SECTION 08 80 00, GLAZING

| Glazing Type | Manufacturer | Mfg. Color Name/No. |
|-------------------------|-------------------|---|
| GL-1 | Not used | Vision Glass - 1/4" Clear |
| GL-2 | Guardian Sunguard | Vision Glass - 1/4" Clear, Tempered |
| GL-3 At display case | Guardian Sunguard | Vision Glass - 5/16" Clear, Tempered |
| GL-4 | Not used | Full Ht. Glass, 1/2" Clear Tempered |
| GL-5 | Fire Lite | Vision panel - FireLite Plus Premium Grade, Clear - 20,60 Min Fire Rating |
| GL-6 | Fire Lite | Vision panel - FireLite Plus Premium |

| | | |
|------|-------------------|--|
| | | Grade, Clear - 90 Min Fire Rating - |
| GL-7 | Guardian SunGuard | 1/2" Laminated Acid Etched Glass - composed of 1/4" clear / .060 PVB interlayer clear / 1/4" Sunguard Satin DECO Glass/ Acid Etched on #4 surface |
| GL-8 | Guardian SunGuard | 1/2" Laminated glass with translucent frit - composed of 1/4" clear / .060 PVB interlayer, clear / 1/4" clear /silkscreen ceramic frit 50% translucent dot pattern to match acid etch on #3 surface |
| VG-1 | Guardian SunGuard | 1" Insulated panel - composed of 1/4" Guardian Sun Guard Light Blue 63 on Clear Low-E #2 / 1/2" air fill/ 1/4" laminated clear glass / Nominal 6mm total thickness |
| VG-2 | Guardian SunGuard | 1" Insulated panel - composed of 1/4" Guardian Sun Guard Light Blue 63 on Clear Low-E #2 / 1/2" air fill/ 1/4" laminated clear glass / Nominal 6mm total thickness/ with 1" integral blind and 1/4" tempered glass inboard |
| VG-3 | Guardian SunGuard | 1" Insulated panel - composed of 1/4" Guardian Sun Guard Light Blue 63 on Clear Low-E #2 / 1/2" air fill/ 1/4" laminated clear glass / Nominal 6mm total thickness |
| SG-1 | Guardian SunGuard | 1" Insulated panel - composed of 1/4" Guardian Sun Guard Light Blue 63 on Clear Low-E #2 / 1/2" air fill / 1/4" laminated clear glass / Solar |

| | | |
|------|-------------------|--|
| | | Gray Ceramic Frit on #6 surface |
| FG-1 | Guardian SunGuard | 1" Insulated panel - composed of 1/4" Guardian Sun Guard Light Blue 63 on Clear Low-E #2 / 1/2" air fill / 1/4" Laminated clear glass with silkscreen ceramic frit 50% warm gray dot pattern on #3 surface |

2.5 DIVISION 09 - FINISHES

A. SECTION 09 30 13, CERAMIC TILING

| Code | Style | Pattern | Manufacturer | Mfg. Color Name/No. |
|-------|----------------|---------|---|--|
| MT-01 | Egyptian Glass | Mosaic | Daltile Contact: Donna Apcar (818) 303-6911 | Color: Oasis EG16 Size: 1"x 1" Field Tile Thickness: 1/4" Joint: 1/8" Mounting: Paperface; buttermount to make flush with adjacent tiles |
| Grout | | | Laticrete Contact: Eddie Obymako (203) 751-2619 | Type: Epoxy Grout Spectra Lock Pro Premium Color: 03 Silk w/MT-01 |

B. SECTION 09 30 13, CERAMIC TILING

| |
|--|
| |
|--|

COMMUNITY LIVING CENTER (CLC)
 VA SIERRA NEVADA HEALTH CARE SYSTEM
 RBB PROJECT #1017200

VA PROJECT #654-317
 VA CONTRACT #VA 261-P-0933

| Finish Code | Manufacturer | Mfg. Color Name/No |
|-------------|---|---|
| PT-01 | Daltile Contact: Donna Apcar (818) 303-6911 | Style: St. Germain Size: 6H" x 24W" Joint: 1/8" Color: Chenile SE62 |
| PT-02 | Daltile Contact: Donna Apcar (818) 303-6911 | Style: St. Germain Size: 3H" x 12W", Bullnose Joint: 1/8" Color: Chenile SE62 |
| PT-03 | Daltile Contact: Donna Apcar (818) 303-6911 | Style: St. Germain Cut to Size: 3H" x 24W" Joint: 1/8" Color: Chocolat SE65 |
| PTB-01 | Daltile Contact: Donna Apcar (818) 303-6911 | Style: St. Germain Size: 6H" x 12W" Cove Base PTB-01 Joint: 1/8" Color: Chenile SE62PTB-01 |
| PTB-02 | Daltile Contact: Donna Apcar (818) 303-6911 | Style: St. Germain Size: 1" x 6", Cove Base Outcorner Joint: 1/8" Color: Chenile SE62 Note: To be used where applicable |
| Grout | Laticrete Contact: Eddie Obymako (203) 751-2619 | Type: Epoxy Grout Spectra Lock Pro Premium Color: 56 Desert Khaki w/PT-01, PT-02, PT-03, PTB-01, and PTB-02 |

| | | |
|--|---------------------|---|
| Transition to 1/8" Resilient Flooring | See Detail 12/AE320 | Solid Surface to match Color: Corian Raffia, Satin/Matte |
|--|---------------------|---|

C. SECTION 09 51 13, ACOUSTICAL CEILINGS

| Finish Code | Component | Color Pattern | Manufacturer | Mfg Name/No. |
|-------------|------------------------------|---------------|--|--|
| | Exposed Suspension System | - - - | Armstrong Contact: Dave Hovekamp (310) 294-0493 | Prelude XL 15/16" |
| AT-01 | Type III | White | Armstrong Contact: Dave Hovekamp (310) 294-0493 | Cirrus 581, 15/16" Angled Tegular 2' X 4' x 7/8" |
| AT-02 | Type III | White | Armstrong Contact: Dave Hovekamp (310) 294-0493 | Cirrus 572, 15/16" Angled Tegular 2' X 2' x 7/8" |
| AT-03 | Type III | White | Armstrong Contact: Dave Hovekamp (310) 294-0493 | Clean Room Ultima 1937, 15/16" Beveled Tegular 2' x 2' x 3/4" |

D. SECTION 09 54 29, WOOD PANEL CEILINGS

| Finish Code | Component | Color Pattern | Manufacturer | Mfg Name/No. |
|-------------|------------------------------|---------------------|--------------|--------------------|
| | Exposed Suspension System | - - - | Armstrong | Prelude XL 15/16" |
| LWC-01 | Wood Plank | Woodworks Channeled | Armstrong | Natural Variations |

COMMUNITY LIVING CENTER (CLC)
VA SIERRA NEVADA HEALTH CARE SYSTEM
RBB PROJECT #1017200

VA PROJECT #654-317
VA CONTRACT #VA 261-P-0933

| | | | | |
|--|--|----------------------|--|---|
| | | Ceiling Plank, Maple | Contact: Dave Hovekamp (310) 294-0493 | 5901CW7, with 1" fiberglass backer Size: 6" x 10' x 3/4" |
|--|--|----------------------|--|---|

E. SECTION 09 65 13, RESILIENT BASE STAIR TREADS AND ACCESSORIES

| Finish Code | Item | Size | Manufacturer | Mfg Name/No. |
|-------------|--------------------------------------|------------------|--|---|
| RB-01 | Rubber Base (RB) w/VT-01, VT-02 | 6" High w/Reveal | Johnsonite Contact: Ellen Wren (323)876-3801 | Style: MW-Masquerade Natural Maple Custom-F6 |
| RB-02 | Rubber Base (RB) w/CPT-01, CPT-02 | 6" High w/Reveal | Johnsonite Contact: Ellen Wren (323)876-3801 | Style: MW-XX-F, Millwork Wallbase Reveal Color: 150 Wetlands |
| RB-03 | Rubber Base (RB) w/VCT | 6" High w/Reveal | Johnsonite Contact: Ellen Wren (323)876-3801 | Style: RWDC-140-6", Recess Wallbase w/Toe Color: 281 Grizzly |
| RB-04 | Rubber Base (RB) w/RT | 6" High w/Reveal | Johnsonite Contact: Ellen Wren (323)876-3801 | Style: RWDC-140-6" Recess Wallbase w/Toe Color: 49 Beige |
| RT-01 | Stair Landings Rubber | V.I.F. | Johnsonite Contact: Ellen Wren (323)876-3801 | Style: Mesto Configurations - Tile Size: 12"x24"x 1/8" Color: Mesto Whirlwind- Equal parts of 48L, 487 and 487D. |

COMMUNITY LIVING CENTER (CLC)
 VA SIERRA NEVADA HEALTH CARE SYSTEM
 RBB PROJECT #1017200

VA PROJECT #654-317
 VA CONTRACT #VA 261-P-0933

| | | | | |
|--------|-------------------------------------|---|--|---|
| RST-01 | Top Step Rubber | V.I.F. | Johnsonite Contact: Ellen Wren (323)876-3801 | Style: Hammered Tread Without Riser Visually Impaired (VIHMT) Color: Mesto 487D Whirlwind; Custom Size: Field Verify Tread Depth |
| RST-01 | Bottom Step Rubber | V.I.F. | Johnsonite Contact: Ellen Wren (323)876-3801 | Style: Hammered Tread/Riser Visually Impaired(VIHTR) - Color: Mesto 487D Whirlwind; Custom Size: Field Verify Tread Depth |
| RST-01 | Resilient Stair Risers Rubber | V.I.F. All stairs except top and bottom | Johnsonite Contact: Ellen Wren (323)876-3801 | Style: Hammered Tread/Riser (HTR)- Color: Mesto 487D Whirlwind; Custom Size: Field Verify Riser Height |
| RST-01 | Visually Impaired Strip | 2" Wide | Johnsonite Contact: Ellen Wren (323)876-3801 | Insert Color: Black |
| RST-01 | Stringer | V.I.F. | Johnsonite Contact: Ellen Wren (323)876-3801 | Color: 49 Beige WB |

F. SECTION 09 65 16, VINYL SHEET FLOORING, HEAT WELDED SEAMS (WSF)

COMMUNITY LIVING CENTER (CLC)
 VA SIERRA NEVADA HEALTH CARE SYSTEM
 RBB PROJECT #1017200

VA PROJECT #654-317
 VA CONTRACT #VA 261-P-0933

| Finish Code | Pattern name | Manufacturer | Mfg. Color Name/No. |
|-------------|-----------------------------|--|--|
| WSF-01 | Rejuvenations Timberline | Armstrong Contact: Ron Rodriguez (323)333-5178 | Color: Maple 37351, Knock on Wood |
| SCB-01 | Rejuvenations Timberline | Armstrong Contact: Ron Rodriguez (323)333-5178 | Color: Maple 37351, Knock on Wood Height: 6" |

G. SECTION 09 65 16, WELDING RODS (WR)

| Finish code | Manufacturer | Mfg. Color Name/No. |
|-------------|--|---------------------|
| WR-01 | Armstrong Contact: Ron Rodriguez (323)333-5178 | To match WSF-01 |

H. SECTION 09 65 19, RESILIENT TILE FLOORING

| Finish Code | Size | Material/Component | Manufacturer | Mfg Name/No. |
|-------------|----------|--------------------|--|--|
| VT-01 | 4" x 36" | VT Planks | Armstrong Contact: Ron Rodriguez (323)333-5178 | Style: Natural Creations ArborArt Color: TP042 Nouveau Maple Honey Size: 4"x36" Pattern: Staggered 6" |
| VT-02 | 4" x 36" | VT Planks | Armstrong Contact: Ron Rodriguez | Style: Natural Creations ArborArt Color: TP041 Nouveau |

COMMUNITY LIVING CENTER (CLC)
 VA SIERRA NEVADA HEALTH CARE SYSTEM
 RBB PROJECT #1017200

VA PROJECT #654-317
 VA CONTRACT #VA 261-P-0933

| | | | | |
|--|-----------|-----|--|--|
| | | | (323)333-5178 | Maple Light Natural Size: 4"x36" Pattern:Staggered 6" |
| VT-03 | Not Used | | | |
| VT-04 Kitchen & pantry, Elevator | 18" x 18" | VT | Armstrong Contact: Ron Rodriguez (323)333-5178 | Style: Natural Creatons Mystix Color: TP780 Aria Natural Size: 18"x18" Pattern:Quarter-turn |
| VT-05 | 18" x 18" | VT | Armstrong Contact: Ron Rodriguez (323)333-5178 | Style: Natural Creatons Mystix Field Color: Morocco Anise Size: 18"x18" TP726 |
| VT-06 | 18" x 18" | VT | Armstrong Contact: Ron Rodriguez (323)333-5178 | Style: Natural Creatons Mystix Accent Color: Morocco Clove TP727 Size: 18"x18" Cut to size, See IN Sheets |
| VCT-01 | 12" x 12" | VCT | Armstrong Contact: Ron Rodriguez (323)333-5178 | Style: Excelon Stonetex Color: 52170 Golden Bamboo Size: 18"x18" |

COMMUNITY LIVING CENTER (CLC)
 VA SIERRA NEVADA HEALTH CARE SYSTEM
 RBB PROJECT #1017200

VA PROJECT #654-317
 VA CONTRACT #VA 261-P-0933

| | | | | |
|--------|-----------|-----|--|---|
| VCT-02 | 12" x 12" | VCT | Armstrong Contact: Ron Rodriguez (323)333-5178 | Style: Imperial Texture Standard Excelon Color: 57506 Colorado Stone 12"x12" |
| VCT-03 | 12" X 12" | VCT | Armstrong Contact: Ron Rodriguez (323)333-5178 | Style: Imperial Texture Standard Excelon Color: 51885 Granny Smith Size: 12"x12" |
| VCT-04 | 12" X 12" | VCT | Armstrong Contact: Ron Rodriguez (323)333-5178 | Style: Static Dissipative SDT Color: 51950 Marble Beige Size: 12"x12" |

I. SECTION 09 68 00, CARPET MODULES (CPT)

| Finish Code | Size | Pattern direction | Manufacturer | Mfg. Color Name/No. |
|---|-----------|----------------------------|--|---|
| CPT-01 | Broadloom | See IN sheets 211 & 212 | Bentley Prince Street Contact: Deborah Palacios (213)505-3825 | Style: Modern Block Color: Sandstone |
| CPT-01 Transition to 1/8" Resilient Flooring (Public Areas) | | | Seam seal all edges of carpet | - - - |

COMMUNITY LIVING CENTER (CLC)
 VA SIERRA NEVADA HEALTH CARE SYSTEM
 RBB PROJECT #1017200

VA PROJECT #654-317
 VA CONTRACT #VA 261-P-0933

| | | | | |
|-------------------------------------|-----------|-------------------------|---|---|
| CPT-02 | Broadloom | See IN sheets 211 & 212 | Shaw Contact: Marsha Newton (310)570-9232 | Style: Glow Color: Creme de la Creme |
| CPT-02 Transition to Corridor | - - - - | | See Door Schedule | |

J. SECTION 09 77 00, SPECIAL WALL SURFACING

| Finish Code | Manufacturer | Mfg. Color Name/No |
|-------------|---|--------------------|
| FRP-01 | Kemlite Co. Sequentia StructoGlas FRP, Class A | Color: TBD |
| | | |

K. SECTION 09 84 33, ACCOUSTICAL WALL PANELING

| Finish Code | Manufacturer | Mfg. Color Name/No. |
|-------------|---|---|
| AWP-01 | Novawall Type: 1" Thick Square Edge - Tackable w/ fabric FW-01 Core Material: 24pcf - 2pcf tackable mineral fiberboard Fire Rating: All systems to pass Class "A" for flame spread and NFPA #701 Mounting: Z-Clip Contact: Don Bigler, Modern Interiors | Fabric: FW-01 Size: 48" Widths Thickness: 1" wrapped tackable |

| | | |
|-------|--|--|
| | (310)261- 4019 | |
| FW-01 | Carnegie Contact: Marci Colin (310)441-2289 | Style: Xorel Color: Strie 6423 F122 |

L. SECTION 09 91 00, PAINT AND COATINGS

1. MPI Gloss and Sheen Standards

| | | Gloss @60 | Sheen @85 |
|---------------|---|--------------------|---------------|
| Gloss Level 1 | a traditional matte finish-flat | max 5 units, and | max 10 units |
| Gloss Level 2 | a high side sheen flat-"a velvet-like" finish | max 10 units, and | 10-35 units |
| Gloss Level 3 | a traditional "egg-shell like" finish | 10-25 units, and | 10-35 units |
| Gloss Level 4 | a "satin-like" finish | 20-35 units, and | min. 35 units |
| Gloss Level 5 | a traditional semi-gloss | 35-70 units | |
| Gloss Level 6 | a traditional gloss | 70-85 units | |
| Gloss level 7 | a high gloss | more than 85 units | |

| 2. Paint Code | Gloss | Manufacturer | Mfg. Color Name/No. |
|----------------|------------------|----------------|--------------------------------|
| INTERIOR PAINT | | | |
| PTE-01 | Eggshell Level 3 | Benjamin Moore | Meadow Day KM3970-1, Field |
| PTE-02 | Eggshell Level 3 | Benjamin Moore | Oyster 26, Corridor |
| PTE-03 | Eggshell Level 3 | Benjamin Moore | Trail Dust HL4273-2, Accent |
| PTE-04 | Eggshell Level 3 | Benjamin Moore | Melmac Silver HL4264-2, Accent |

| | | | |
|--|--------------------|------------------|--|
| PTE-05 | Eggshell Level 3 | Benjamin Moore | Windsor Toffee HL4212-2, Accent |
| PTE-06 | Eggshell Level 3 | Benjamin Moore | Bungalow Brown HL4213-3, Accent |
| PTE-07 | Eggshell Level 3 | Benjamin Moore | Tricycle Taupe HL4248-2, Accent |
| PTE-08 | Eggshell Level 3 | Benjamin Moore | Jitterbug HL4211-2, Accent |
| PTE-09 | Eggshell Level 3 | Benjamin Moore | Southwest Spirit KM4103-3, Wayfinding |
| PTE-10 | Eggshell Level 3 | Benjamin Moore | Topaz Tease KM4101-2, Signage Field Color |
| PTE-11 | Eggshell Level 3 | Benjamin Moore | Castleford KM4121-1, Signage Paper Color |
| Door Frames | Semi-Gloss Level 5 | Benjamin Moore | Door frames to match adjacent wall paint color |
| | | | |
| EXTERIOR PAINT | | | |
| PT-1 At Concrete Stem Wall at base of building | Matte Level 2 | SHERMAN WILLIAMS | SW2024 GOBI BEIGE |
| PT-2 At Stucco Wall at existing building | Matte Level 2 | Benjamin Moore | Match Existing |
| Concrete Ramp | | | |
| Concrete Retaining walls/Ramp walls/ Exit stair wall | Matte Level 2 | SHERMAN WILLIAMS | SW2024 GOBI BEIGE |
| Concrete patio paving | Matte Level 2 | SCOFIELD CO. | Custom Gray |
| Concrete Courtyard paving | Matte Level 2 | SCOFIELD CO. | Custom Gray |

COMMUNITY LIVING CENTER (CLC)
 VA SIERRA NEVADA HEALTH CARE SYSTEM
 RBB PROJECT #1017200

VA PROJECT #654-317
 VA CONTRACT #VA 261-P-0933

| | | | |
|-------------------|---------------|------------------|-------------------|
| Concrete Fountain | Matte Level 2 | SHERMAN WILLIAMS | SW2024 GOBI BEIGE |
| | | | |

M. SECTION 10 11 23, TACKBOARDS AND MARKERBOARDS

| Finish Code | Manufacturer, <u>Model/Style/Material</u> | Mfg. Color Name/No. |
|------------------------------------|---|---|
| TB-01 Quiet Room Bulletin Board | Peter Pepper Model: FB4848-5 Fabric Tackable Panel Custom Size: 48"W x 48"H Frame: #5 Slim Trim Aluminum Extrusion Frame in Matte Aluminum Fabric: COM, FW-02 Fabric Quantity: 1.5yds Contact: Steve Francis(714)241-3500 | Fabric: FW-02 Carnegie Style: Xorel Color: Strie 6423 F107 Contact: Marci Colin (310)441-2289 |
| TB-02 Concierge Back Panel | Novawall Size: 48" widths Thickness: 1/2" Classic Edge System Core: USG Micore Tackboard with White Painted Face Fabric: FW-03 Note: Provide scrim fabric if necessary Contact: Don Bigler (310)261-4019, Modern Interiors See Detail 9/AE780 for attachment | Fabric: FW-03 Manufacturer: Carnegie Style: Xorel Color: Quarry 6619 F94 Pattern runs horizontal Contact: Marci Colin (310)441-2289 |
| TB-03 Display Case | Novawall Size: 48" widths Thickness: 1/2" Classic Edge System | Fabric FW-02 Manufacturer Carnegie Style: Xorel |

| | | |
|--|--|---|
| | Core: USG Micore Tackboard with White Painted Face Fabric: FW-02 Note: Provide scrim fabric if necessary Contact: Don Bigler (310)261-4019, Modern Interiors See Details 9 & 10/AE780 for attachment | Color: Strie 6423 F107 Contact: Marci Colin (310)441-2289 |
| TB-04 Patient Room Tackboard @ Desk 1st Floor | Novawall Size: 48" widths Thickness: 1/2" Classic Edge System Core: USG Micore Tackboard with White Painted Face Fabric: FW-05 Note: Provide scrim fabric if necessary Contact: Don Bigler (310)261-4019, Modern Interiors See Detail 9/AE780 for attachment | Fabric FW-05 Manufacturer: Carnegie Style: Xorel Color: Strie 6423 F122 Contact: Marci Colin (310)441-2289 |
| TB-05 Patient Room Tackboard @ Desk 2nd Floor | Novawall Size: 48" widths Thickness: 1/2" Classic Edge System Core: USG Micore Tackboard with White Painted Face Fabric: FW-06 Note: Provide scrim fabric if necessary Contact: Don Bigler (310)261-4019, Modern Interiors See Detail 9/AE780 for attachment | Fabric FW-06 Manufacturer: Carnegie Style: Xorel Color: Meteor 6427 736 Contact: Marci Colin (310)441-2289 |
| MB-01 Patient Room Tackboard @ Desk | Custom Printed Boards Size: 48" widths | Fabric FW-06 Manufacturer: Carnegie |

2

| | | |
|------------------------------------|--|---|
| 2nd Floor | Thickness: 1/2" Classic Edge System Core: USC Micore Tackboard with White Painted Face Fabric: FW-06 Note: Provide scrim fabric if necessary Contact: Don Bigler (310) 261-4019, Modern Interiors See Detail 9/AE780 for attachment | Style: Xorel Color: Meteor 6427-736 Contact: Marci Colin (310) 441-2289 |
| WB-01 Patient Room Marker Board | Custom Printed Boards Size: 6'-8"H x 3'-0"W Thickness: 3/8" <u>To be magnetic</u> www.customprintedboards.com | <u>Custom text per board should include the following: Date, Nurse, Nurse Assistant, Breakfast, Lunch, Dinner, Meal Times, Room Numbers</u> <u>Magnets to be 1-1/2" custom design. Design to be insignias of all armed forces; Army, Navy, Marines, Air Force, etc. Three magnets to be provided per board</u> |

N. SECTION 10 12 00, DISPLAY CASES

| Finish / hardware | Manufacturer | Mfg. Color Name/No. |
|---|---|--|
| Wood Veneer to match casework, Glass doors w/s.s. top and bottom real, concealed pivot hinges, magnetic locks, key lock; Adjustable glass shelves 5/16" tempered glass, suspended from 1/8" stainless steel hanging | Helmut Geunschel Robert Schmitz 800-852-2525 | Recessed Vista Wall 1 ST FLOOR - VI-R 134 SP D3 25S (3 PAIR DOORS) 2 ND FLOOR - VI-R 90 SP D3 25S (3 PAIR DOORS) |

COMMUNITY LIVING CENTER (CLC)
 VA SIERRA NEVADA HEALTH CARE SYSTEM
 RBB PROJECT #1017200

VA PROJECT #654-317
 VA CONTRACT #VA 261-P-0933

| | | |
|----------|--|--|
| hardware | | |
|----------|--|--|

O. SECTION 10 26 00, WALL AND DOOR PROTECTION

| Item | Material | Manufacturer | Mfg. Color Name/No. |
|--------------------------------------|-------------------|---|---|
| High Impact Wall Covering, HIC-01 | Rigid Vinyl Sheet | C/S Contact: Elisa Contreras, Integrated Marketing Concepts (626)665-1321 | Style: Chameleon Color: #372 Classic Maple 4' x 8', .040" thick Install horizontally to minimize vertical seams. Butt joint at all vertical seams and inside corner seams. |
| Wainscot Trim | | C/S Contact: Elisa Contreras, Integrated Marketing Concepts (626)665-1321 | Color: 479 Cappuccino Finish: Suede |
| Corner Guards, CG-01 | | C/S Contact: Elisa Contreras, Integrated Marketing Concepts (626)665-1321 | Model: FS-20R (1HR) Color: 479 Cappuccino Finish: Suede |
| Corner Guards, CG-01 | | C/S Contact: Elisa Contreras, Integrated Marketing Concepts (626)665-1321 | Model: FS-20 (Non-Rated) Color: 479 Cappuccino Finish: Suede |

COMMUNITY LIVING CENTER (CLC)
 VA SIERRA NEVADA HEALTH CARE SYSTEM
 RBB PROJECT #1017200

VA PROJECT #654-317
 VA CONTRACT #VA 261-P-0933

| | | | |
|--------------------------|--|---|---|
| Hand Rail, HR-01 | Natural Wood Maple w/stainless steel corners | C/S Contact: Elisa Contreras, Integrated Marketing Concepts (626)665-1321 | Style: HRWS-6C Finish: Maple |
| Hand Rail, HR-02 | Acrovyn | C/S Contact: Elisa Contreras, Integrated Marketing Concepts (626)665-1321 | Style: HRB-4C Color: To match existing |
| Crash Rail, CRR-01 | Acrovyn | C/S Contact: Elisa Contreras, Integrated Marketing Concepts (626)665-1321 | Style: SCR-64N Color: To match existing |
| Frame Protection (Doors) | Surface Mount, Full height | C/S Contact: Elisa Contreras, Integrated Marketing Concepts (626)665-1321 | #D1 Model Door Frame Guard; Size: 2" Color: 479 Cappuccino Finish: Suede |

P. SECTION 10 13 00 / 10 14 00, INTERIOR SIGNS

| Sign Type | Component | Manufacturer | Mfg. Color Name/No. |
|----------------------|-------------|---------------------|-------------------------------------|
| Sign types listed on | Refer to VA | Refer to VA signage | Colors for Building per Campus Map: |

| | | | |
|---|--|--------------------------------------|--|
| sheets IN210, IN211, IN212, Refer to legend on sheet - Refer to VA signage package in Specification Appendix for all types | signage package in Specification Appendix | package in Specification Appendix | Lettering PTE-09 - Benjamin Moore, Southwest Spirit KM4103-3 Field Color PTE-10 - Benjamin Moore, Topaz Tease KM4101-2 Paper Color PTE-11 - Benjamin Moore, Castleford KM4121-1 |
| | | | |

Q. SECTION 10 21 23, CURTAINS AND TRACKS

| Component | Material | Manufacturer | Mfg. Color Name/No. |
|-----------------|----------|--|---|
| Shower Curtain | | Steel Guard Safety Products Contact: Natalie Robbins (812) 235-6068 | Steel Guard Economy Plus Hospital Curtain, HC EP NMT 78 No Mesh, ALL Track Hardware to be included Size: 77"H (1" off floor) x 131"W (includes 3% + 2" drapage) Field Verify all measurements Grommets: #2 Nickel Plated Grommet Set Every 6" On Top Hem of Curtain 18" Drop Bead Chain with formed aluminum hook. (#10) Nickel Plate steel Hem: Chain Weight Sewn in Bottom of Curtain Fabric: 2 layer FR Vinyl Coated Polyester Fabric (NFPA701) with Polyester/Cotton Cubicle Curtain Color: TBD |
| Track Shape - L | | | Track Run: 5' x 5'-5" Field verify all measurements 90 Degree Curve Section 2'x 2' (Cut to size) |

| | | | |
|--|--|--|---|
| | | | 4'L, Aluminum Cubicle Curtain Track End Stop: Regular Single Wheel Nylon Roller Cubicle Track System Mounting: Ceiling or Suspended |
|--|--|--|---|

R. SECTION 10 22 20, SOLID SURFACE SHOWER SYSTEMS AND PRODUCTS

| Component | Material | Manufacturer | Mfg. Color/Name |
|---|---------------|--|--|
| Floor SSM-08 See Specs for complete information | Solid Surface | Watermark Contact: Steve Elmore (615)291-6111 x101 | Color: To match Corian, Raffia; Satin/Matte Finish: Watermark White Spectrum S01S |
| Wall SSM-08 See Specs for complete information | Solid Surface | Watermark Contact: Steve Elmore (615)291-6111 x101 | Color: To match Corian, Raffia; Satin/Matte Finish: Watermark White Spectrum S01S |
| Sink SSM-09 See Specs for complete information | Solid Surface | Watermark Contact: Steve Elmore (615)291-6111 x101 | Color: To match Corian, Raffia; Satin/Matte Finish: Watermark White S01 |

S. SECTION 10 25 13, PATIENT BED SERVICE WALLS

| Component | Material | Finish | Manufacturer | Mfg. Color/Name |
|---------------|------------------|--------|---|---|
| Cabinet Frame | Trespa HPL-01 | Meteon | Trespa Contact: Greg McAloney (626)253-8161 | Color: Montreux Sunglow Pattern: Runs horizontal |

COMMUNITY LIVING CENTER (CLC)
 VA SIERRA NEVADA HEALTH CARE SYSTEM
 RBB PROJECT #1017200

VA PROJECT #654-317
 VA CONTRACT #VA 261-P-0933

| | | | | |
|----------------------------|---------------------------------|----------------|---|---|
| Face Panel | Trespa HPL-01 | Meteon | Trespa Contact: Greg McAloney (626)253-8161 | Color: Montreux Sunglow Pattern: Runs horizontal |
| Accent Band - 1st FLOOR | Thermoplastic Resin PR-01 | Varia Ecoresin | 3Form Contact: Rebecca Koteen (310)272-6088 | Color: Reef + Surf + White Out Finish Front: Supermatte Finish Back: Supermatte Guage: 3/8" |
| Accent Band - 2nd FLOOR | Thermoplastic Resin PR-02 | Varia Ecoresin | 3Form Contact: Rebecca Koteen (310)272-6088 | Color: Aloe + White Out Finish Front: Supermatte Finish Back: Supermatte Guage: 3/8" |

T. SECTION 10 44 13, FIRE EXTINGUISHER CABINETS

| Component | Material | Finish |
|---|---|--|
| Fully recessed mounted FEC w/5/16" flat trim | "Vertical DUO" - Stainless Steel #4 clear acrylic door | Stainless Steel #4, Larsen Mfg.,with Larsen LOC, size for both 4A 60 BC and 2A10 BC Extinguishers |

U. SECTION 10 28 00, TOILET, BATH, AND LAUNDRY ACCESSORIES

| Identifier | Item | Material | Manufacturer | Mfg. Color Name/No. |
|------------|--|----------|--------------|---------------------|
| A | 42" X 1 1/4" HORIZ. GRAB BAR +33" A.F.F. | | BOBRICK | B-5806-X 42 |
| B | RECESSED TOILET SEAT COVER DISPENSER, ROLL TOILET TISSUE DISPENSER W/ NAPKIN DISPOSAL AT FEMALE OR UNISEX TOILETS | | BOBRICK | B-3574 |

| | | | | |
|---|--|--|--------------|--------------------|
| C | RECESSED PAPER TOWEL DISPENSER | | BOBRICK | B-35903 |
| D | SURFACE MOUNTED PAPER TOWEL DISPENSER | | BOBRICK | B-26212 |
| E | 1 1/4" HORIZ. GRAB BAR +33" A.F.F. FULL WIDTH OF ROOM WITH MODIFIED 2 1/2" RADIUS @ INTERMEDIATE SUPPORT AND WALL TO WALL END PLATE SUPPORTS | | BOBRICK | CUSTOM #315638 |
| F | 24" X 36" MIRROR W/ STAINLESS STEEL CHANNEL FRAME | | BOBRICK | B-1658-2436 |
| G | SURFACE MOUNTED SOAP DISPENSER | | BOBRICK | TBD |
| H | SURFACE MOUNTED HAND SANITIZER | | BOBRICK | TBD |
| I | (2) SURFACE-MOUNTED SINGLE ROBE HOOKS MOUNTED AT 54" AND 72" AF | | BOBRICK | B-671 |
| J | RECESSED SOAP AND SHAMPOO HOLDER | | BOBRICK | TBD |
| K | 24" X 1 1/4" HORIZ. GRAB BAR +33" A.F.F. | | BOBRICK | B-5806X24 |
| L | FLOOR DRAIN (6" CORE DRILLED) | | | |
| M | 29" X 1 1/4" HORIZ. SWING-UP GRAB BAR +33" A.F.F. W/ TOILET PAPER | | BOBRICK | B-11124 |
| N | 29" X 1 1/4" HORIZ. SWING-UP GRAB BAR +33" A.F.F. | | BOBRICK | B-4998 |
| O | FOLDING SHOWER SEAT +18" AFF. | | BOBRICK | B-5181 |
| P | WASTE RECEPTACLE | | BOBRICK | B-2260 |
| Q | SHOWER HEAD CONTROLS AT 40" AFF | | PER PLUMBING | |
| R | RECESSED HANDRYER (+38" AFF @ B.O. OF R.O.) | | BOBRICK | B-750, COLOR WHITE |
| S | 24" X 1 1/4" HORIZ. TOWEL BAR +33" | | BOBRICK | B-5806-X 24 |

COMMUNITY LIVING CENTER (CLC)
 VA SIERRA NEVADA HEALTH CARE SYSTEM
 RBB PROJECT #1017200

VA PROJECT #654-317
 VA CONTRACT #VA 261-P-0933

| | | | | |
|---|--|--|-----------------------------|-------------------------------|
| | A.F.F. | | | |
| T | DRINKING FOUNTAIN, REFER TO PLUMBING DWGS. | | PER PLUMBING AQUA ACCESS | A112408B-FG-VR |
| U | MIRROR FULL HEIGHT | | BOBRICK | CUSTSOM PER DRWG - SS TRIM |
| V | MIRROR WALL TO WALL | | BOBRICK | CUSTSOM PER DRWG - SS TRIM |
| | | | | |

V. SECTION 10 30 00, FIREPLACE

| Item/ Type | Finish | Manufacturer | Mfg. Color Name/No. |
|--------------------|----------|--------------|--|
| Electric Fireplace | Standard | Dimplex | 50" Linear Electric Fireplace, Recessed |

W. SECTION 10 51 16, WOOD LOCKERS

| Item/ Type | Finish | Manufacturer | Mfg. Color Name/No. |
|---|--------|--------------------------------|---|
| Model B, Option 1 2-Tier locker, Plastic Laminate Faced | Maple | Hollman, Inc. (972)815-4000 | Size: 12W" x 18D" x 86H" Laminate: Wilsonart 7909-78 Fusion Maple Lock: Built-in combination lock by Masterlock |
| Butcher Block Bench | Maple | Hollman, Inc. (972)815-4000 | Size: 15W" x 30L" Legs: Stainless Steel |

2.6 DIVISION 12- FURNISHINGS - ALT #7

A. SECTION 12 21 13, HORIZONTAL BLINDS

| Item/ Type | Finish | Manufacturer | Mfg. Color Name/No. |
|--|--|--|--|
| Alt #7 Integral blinds at VG-2 Locations Refer to section 084413 for custom integral blinds by Kawneer with sull sash system | Aluminum blinds, Extruded aluminum sash system to match aluminum mullions | Hunter Douglas Janice Derakhshan (562)618-3559 | Style: 1" Surface Mounted Blinds Color: Aluminum With Custom Kawneer extruded aluminum sull sash |
| Alt #7 - Horizontal Blinds for patient Rooms | | Hunter Douglas Janice Derakhshan (562)618-3559 | Style: 1" Surface Mounted Blinds Color: Aluminum |

B. SECTION 12 24 13, ROLLER WINDOW SHADES

| Item/ Type | Finish | Manufacturer | Mfg. Color Name/No. |
|--------------|---|---|--|
| Mecho Shades | Motorized interior solar shades - Shade Type 1 | Mecho Systems Contact: Jean-Guy, Architype, Inc. (310)652-2263 | Fabric - Thermoveil Dense Basket Weave 1500 Series; 3% transparent; Color: 1513 Grey |

C. SECTION 12 32 00, WOOD CASEWORK (Includes Keyboard,CPU holder, Wire management Hardware)

| Item Type | Location | Manufacturer/Finish/Color |
|-----------------------------------|---|---|
| SSM-01, Solid Surface | Concierge reception desk Room 1026 & 2026,Control Room Desk reception Room 1002 at Countertop, Quartz See details | Manufacturer: Stoneville, Color: Canyon, Polished, 1/2" Contact: Trishan Fernando Stoneville, Inc. (818)391-0927 |
| SSM-02, Solid Surface | Concierge reception desk Room 1026 & 2026,Control Room reception Desk Room 1002 at Reception Face, Quartz See details | Manufacturer: Stoneville, Color: Botticino, Polished, 1/2" Contact: Trishan Fernando Stoneville, Inc. (818)391-0927 |
| WV-01 | Casework | FSC Certified Quartersawn sliced white maple with clear satin conversion varnish finish, system 5 with antimicrobial additive. Match: Book, Room: Blueprint |
| KEYBOARD TRAY | Concierge reception desk Room 1026, 2026, Control reception desk Room 1002 | Manufacturer: Hafele Black Epoxy, Item no. 632.68.350 |
| CPU HOLDER | Concierge reception desk Room 1026, 2026, Control reception desk Room 1002 | Manufacturer: Hafele Black Epoxy, w/swivel and extension, Item no. 639.72.350 |
| WIRE MANAGEMENT / CABLE TROUGH | Concierge reception desk Room 1026, 2026, Control reception desk Room 1002 | Manufacturer: Hafele Black, Item no. 829.19.301 |
| CABLE GROMMET | Concierge reception desk Room 1026, 2026, Control reception desk Room 1002 | Manufacturer: Hafele Black Epoxy, Item no. 429.94.319 |

D. SECTION 12 36 61, COUNTERTOPS AND ACCESSORIES

| Type | Finish/Color |
|--|---|
| Solid Surface 1/2" toilet countertop with integral sink 816 and 4" backsplash & sidesplash, eased edge See finish schedule for location | SSM-03 Corian Countertop, Color: Raffia, Satin/Matte; SSM-04 Corian Sink Bowl Glacier White, Satin/Matte Contact: Monica Sams, (562) 631-1078 |
| Solid Surface 1/2" countertop with 4" backsplash, eased edge (kitchen, dining room area) See finish schedule for location | SSM-05 Corian countertop, Color: Willow, Satin/Matte Contact: Monica Sams, (562) 631-1078 |
| Solid Surface 1/2" See finish schedule for location | SSM-06 Corian Countertop, Color: Concrete, Satin/Matte Contact: Monica Sams, (562) 631-1078 |
| Solid Surface 1/2" toilet countertop with 4" backsplash & sidesplash, eased edge | SSM-07 Corian Countertop, Color: Raffia, Satin/Matte; SSM-04 Corian Sink Bowl Glacier White, Satin/Matte Contact: Monica Sams, (562) 631-1078 |
| Solid Surface Patient Toilet Countertop See Section 10 22 20 above and Specs for complete information | SSM-08 Watermark countertop, Color: To match Corian Raffia, Satin/Matte; Finish: Watermark White Spectrum S01S SSM-09 Watermark Sink Bowl Color: Watermark White S01 Contact: Steve Elmore (615)291-6111 x101 |

E. SECTION 12 48 16, ENTRANCE FLOOR GRILLES

| Component | Material | Manufacturer | Mfg. Color Name/No. |
|-------------------------------|-----------------------------------|---|-----------------------------------|
| EFG-01, Entrance Floor Grille | Stainless steel with aluminum pan | C/S Contact: Elisa Contreras, Integrated Marketing Concepts (626)665-1321 | Floorometry 101, standard pattern |

COMMUNITY LIVING CENTER (CLC)
 VA SIERRA NEVADA HEALTH CARE SYSTEM
 RBB PROJECT #1017200

VA PROJECT #654-317
 VA CONTRACT #VA 261-P-0933

| | | | |
|--|--|--|--|
| | | | |
|--|--|--|--|

2.7 DIVISION 14 - CONVEYING EQUIPMENT

A. SECTION 14 24 00, HYDRAULIC ELEVATORS

| Item/ Type | Finish | Manufacturer | Mfg. Color Name/No. |
|-------------------------------|--|--|---|
| Holed Hydraulic 4500 Elevator | Door & Entrance - Stainless Steel Raised Laminate Panels - Wilsonart Fusion Maple | Otis Contact: Lisa Fox (775)250-4815 | Ceiling: 4-LED Flush Ceiling (standard), stainless steel panel. Hand Rail: Round bar stainless steel Bumper Rail-Side & Rear: stainless steel |

2.8 DIVISION 22 - PLUMBING

A. SECTION 22 40 00, PLUMBING FIXTURES AND TRIM

| Item | Color |
|---------------------|-----------------|
| Water Closet | White |
| Urinal | White |
| Lavatories | White |
| Service Sink Corner | Stainless Steel |
| Pantry Sink | Stainless Steel |
| Drinking Fountain | Stainless Steel |

B. SECTION 22 43 00, HEALTHCARE PLUMBING FIXTURES

| Item | Color |
|------|-------|
|------|-------|

COMMUNITY LIVING CENTER (CLC)
 VA SIERRA NEVADA HEALTH CARE SYSTEM
 RBB PROJECT #1017200

VA PROJECT #654-317
 VA CONTRACT #VA 261-P-0933

| | |
|------------------|--|
| Hydrotherapy Tub | Manufacturer: Arjo Contact: 1-800-323-1245 Color: White Model: Hydromassage Type: Rhapsody System 25 |
|------------------|--|

2.9 DIVISON 26 - ELECTRICAL

A. SECTION 26 51 00, BUILDING LIGHTING INTERIOR

| Fixture Type | Exterior Finish | Color |
|--|---------------------------------|---------------------|
| F1, F2, F2X, F3X, F4, F4X, F5, F8, F9, F10, F11, F11X, F12, F14, F15, F20, F20X, F21, F22, F23, L4, L9, X3 | WHITE PAINT ON ANY EXPOSED TRIM | WHITE |
| L1, L1X, L2, L3, L5, L6, L6X, L10X, L11X | CLEAR ALZAK DIFFUSE TRIM | CLEAR ALZAK DIFFUSE |
| X1, X2 | BRUSHED ALUMINUM HOUSING | BEUSHED ALUMINUM |
| D1 | SATIN NICKEL | SATIN NICKEL |
| D2 | ALUMINUM | ALUMINUM |
| D3 | BRUSHED PLATINUM | BRUSHED PLATINUM |
| F19, D4 | POLISHED CHROME | POLISHED CHROME |
| F7 | METALLIC BSIL | ALUMINUM |
| F18X | TITANIUM SILVER | TITANIUM SILVER |

COMMUNITY LIVING CENTER (CLC)
 VA SIERRA NEVADA HEALTH CARE SYSTEM
 RBB PROJECT #1017200

VA PROJECT #654-317
 VA CONTRACT #VA 261-P-0933

B. SECTION 26 56 00, SITE LIGHTING

| Type and Component | Exterior Finish | Manufacturer | Mfg. Name/No. |
|--------------------|----------------------------------|---------------|------------------------------------|
| X5 | DIE-CAST ALUMINUM ON WHITE | LITHONIA | SEE FIXTURE SCHEDULE SHEET E002 |
| L7, L8, L13 | BRONZE | BETALED | SEE FIXTURE SCHEDULE SHEET E002 |
| X4 | BRONZE | LITHONIA | SEE FIXTURE SCHEDULE SHEET E002 |
| L14, L15 | METALLIC ALUMINUM | COLE LIGHTING | SEE FIXTURE SCHEDULE SHEET E002 |
| F13 | DIE CAST ALUMINUM-DARK BRONZE | KIM LIGHTING | SEE FIXTURE SCHEDULE SHEET E002 |
| L12 | SILVER | KENALL | SEE FIXTURE SCHEDULE SHEET E002 |

DIVISION 27 - WIRELESS DIGITAL DISPLAY CLOCKS

A. SECTION 27 42 19, ELECTRONIC DIGITAL SYSTEM

| Item | Manufacturer | Mfg. Color Name/No. |
|---|--|--|
| Wall Clock Patient Rooms CLK-01 | Primex Wireless, Inc. Contact: Dwayne Walker (262)745-4104 | Style: GPS Synchronized Time Systems Personal Series LCD CLock Model#: XRA4Z200 |
| Wall Clock Concierge Desk Column CLK-02 | Primex Wireless, Inc. Contact: Dwayne Walker (262)745-4104 | Style: Traditional Series Clock 14339 16" 120VAC Black |

COMMUNITY LIVING CENTER (CLC)
VA SIERRA NEVADA HEALTH CARE SYSTEM
RBB PROJECT #1017200

VA PROJECT #654-317
VA CONTRACT #VA 261-P-0933

PART III EXECUTION

3.1 FINISH SCHEDULES & MISCELLANEOUS ABBREVIATIONS

| FINISH SCHEDULE & MISCELLANEOUS ABBREVIATIONS | |
|---|--------------|
| Term | Abbreviation |
| Access Flooring | AF |
| Accordion Folding Partition | AFP |
| Acoustical Ceiling | ACT |
| Acoustical Ceiling, Special Faced | AT (SP) |
| Acoustical Metal Pan Ceiling | AMP |
| Acoustical Wall Panel | AWP |
| Acoustical Wall Treatment | AWT |
| Acoustical Wallcovering | AWF |
| Anodized Aluminum Colored | AAC |
| Anodized Aluminum Natural Finish | AA |
| Baked On Enamel | BE |
| Brick Face | BR |
| Brick Flooring | BF |
| Brick Paving | BP |
| Carpet | CP |
| Carpet Athletic Flooring | CAF |
| Carpet Module Tile | CPT |
| Ceramic Glazed Facing Brick | CGFB |
| Ceramic Mosaic Tile | FTCT |
| Chair Rail | CHR |
| Clock | CLK |

| | |
|-------------------------------|--------|
| Concrete | C |
| Concrete Masonry Unit | CMU |
| Corner Guard | CG |
| Crash Rail | CRR |
| Divider Strips Marble | DS MB |
| Entrance Floor Grille | EFG |
| Epoxy Coating | EC |
| Epoxy Resin Flooring | ERF |
| Existing | E |
| Exposed Divider Strips | EXP |
| Exterior | EXT |
| Exterior Finish System | EFS |
| Exterior Paint | EXT-P |
| Exterior Stain | EXT-ST |
| Fabric Wallcovering | FW |
| Facing Tile | SCT |
| Feature Strips | FS |
| Fiber Reinforced Plastic | FRP |
| Floor Mats & Frames | FM |
| Floor Tile, Mosaic | FT |
| Fluorocarbon | FC |
| Folding Panel Partition | FP |
| Foot Grille | FG |
| Glass | GL |
| Glass Masonry Unit | GUMU |
| Glazed Face CMU | GCMU |
| Glazed Structural Facing Tile | SFTU |
| Granite | GT |
| Guard Rail | GR |
| Gypsum Wallboard | GWB |
| Hand Rail | HR |
| High Glazed Coating | SC |
| High Pressure Laminate | HPL |
| Latex Mastic Flooring | LM |

COMMUNITY LIVING CENTER (CLC)
 VA SIERRA NEVADA HEALTH CARE SYSTEM
 RBB PROJECT #1017200

VA PROJECT #654-317
 VA CONTRACT #VA 261-P-0933

| | |
|---|------|
| Linear Metal Ceiling | LMC |
| Linear Wood Ceiling | LWC |
| Marble | MB |
| Material | MAT |
| Mortar | M |
| Mosaic Tile | MT |
| Multi-Color Coating | MC |
| Natural Finish | NF |
| Paint | P |
| Paint Eggshell | PTE |
| Paint Semi-gloss | PTS |
| Paver Tile | PVT |
| Perforated Metal Facing (Tile or Panels) | PMF |
| Plaster | PL |
| Plaster High Strength | HSPL |
| Plaster Keene Cement | KC |
| Plastic Laminate | HPDL |
| Polyester Resin | PR |
| Polypropylene Fabric Wallcovering | PFW |
| Porcelain Paver Tile | PPT |
| Porcelain Tile | PT |
| Porcelain Tile Base | PTB |
| Precast Concrete Paver Tile | PCPT |
| Quarry Tile | QT |
| Radiant Ceiling Panel System | RCP |
| Resilient Stair Tread | RST |
| Rubber Base | RB |
| Rubber Tile Flooring | RT |
| Self Coving Base | SCB |
| Solid Surface Material | SSM |

| | |
|--|-----|
| Spandrel Glass | SLG |
| Stain | ST |
| Stainless Steel | SS |
| Stone Flooring | SF |
| Structural Clay | SC |
| Suspension Decorative Grids | SDG |
| Tackboard | TB |
| Terrazzo Portland Cement | PCT |
| Terrazzo Tile | TT |
| Terrazzo, Thin Set | |
| Textured Gypsum Ceiling Panel | TGC |
| Textured Metal Ceiling Panel | TMC |
| Thin set Terrazzo | TST |
| Top Cap | TC |
| Veneer Plaster | VP |
| Vinyl Base | VTB |
| Vinyl Coated Fabric Wallcovering | W |
| Vinyl Composition Tile | VCT |
| Vinyl Sheet Flooring | VSF |
| Vinyl Sheet Flooring (Welded Seams) | WSF |
| Vinyl Tile | VT |
| Wall Border | WB |
| Welding Rod | WR |
| Wood | WD |
| Wood Veneer | WV |
| | |

COMMUNITY LIVING CENTER (CLC)
VA SIERRA NEVADA HEALTH CARE SYSTEM
RBB PROJECT #1017200

VA PROJECT #654-317
VA CONTRACT #VA 261-P-0933

3.2 ROOM FINISH SCHEDULE

A. Refer to Drawings.

--- E N D---