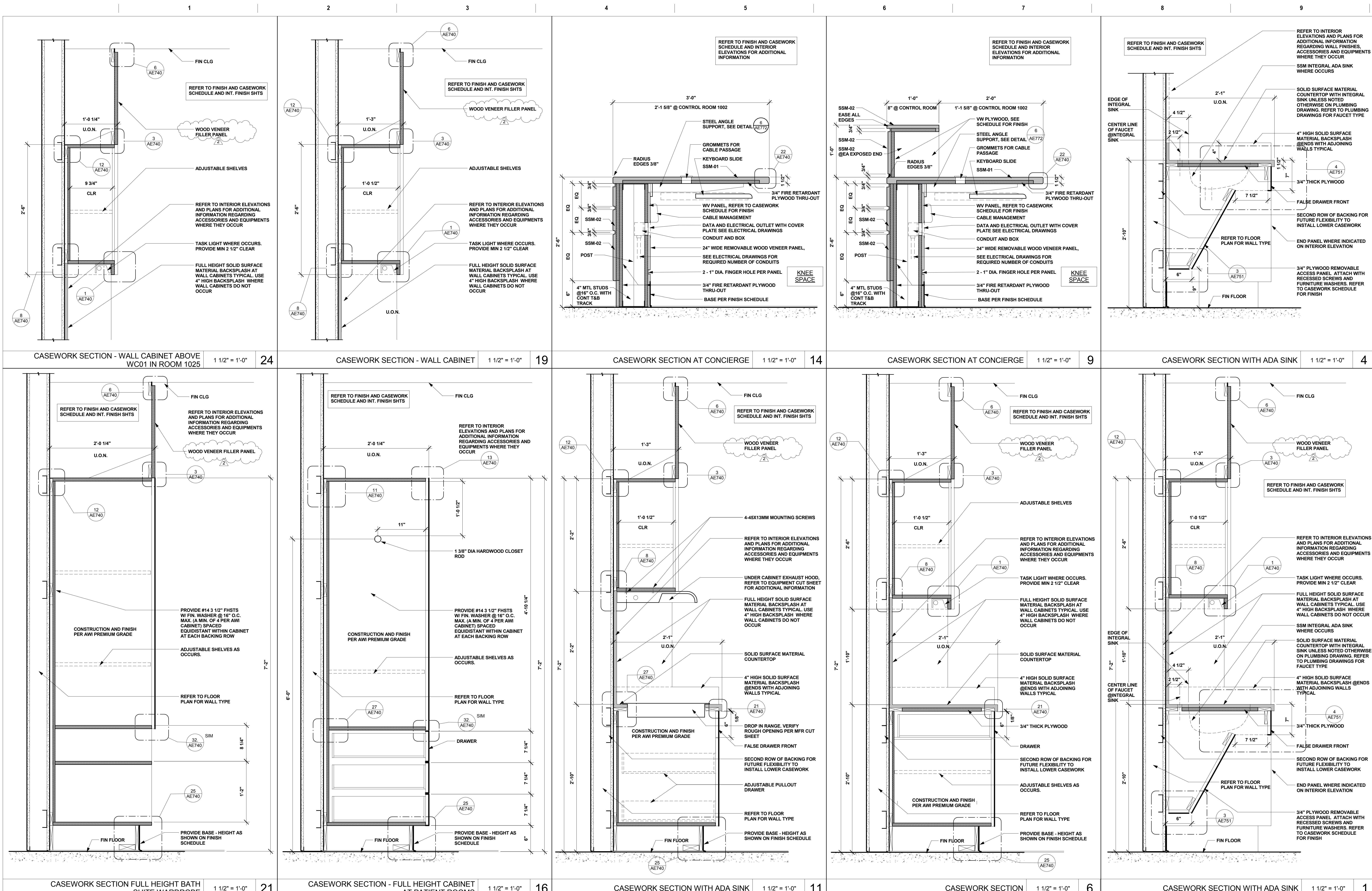


A
B
C
D
E
F

three inches = one foot
one and one half inch = one foot
one inch = one foot
three quarters inch = one foot
one half inch = one foot
three eighths inch = one foot
one quarter inch = one foot
one eighth inch = one foot



AMENDMENT 2 9/6/12		Consultants COLLABORATIVE DESIGN STUDIO architecture of experience and place www.collaborativedesignstudio.com T 775.348.7777 F 775.348.0904 9444 DOUBLE R BLVD SUITE B RENO NV 89521		Reviewing Agency - Fire Protection AON Fire Protection Engineering Aon Fire Protection Engineering Corporation 11770 Bernardo Plaza Court Suite 116 San Diego, CA 92128 t+1.858.673.5845 f+1.858.673.5849 www.aonfire.com Fire Protection Code Risk Life Safety Security		LICENSED ARCHITECT ARTHUR E. BORDEN 12010212 STATE OF NEVADA		Architects/Engineers RBB ARCHITECTS INC 10980 Wilshire Boulevard Los Angeles, California 90024-3905 Telephone 310 473 3555 Facsimile 310 473 3555 www.rbbinc.com 917 7th St. 2nd Floor Ste. 3 Sacramento, California 95814 Telephone 310 473 3555 Facsimile 310 473 3555 www.rbbinc.com		Drawing Title TYPICAL CASEWORK SECTIONS Scale 1 1/2" = 1'-0" Approved Project Director		Project Title VA RENO HEALTHCARE SYSTEM COMMUNITY LIVING CENTER EXPANSION Project No. #1017200 Location 975 KIRMAN AVE., RENO, NV Date 06/01/2012		VA Contract No. VA261-P-0933 Checked RP Drawn SE		VA Project No. 654-317 Building No. Drawing No. AE750		Office of Construction and Facilities Management Department of Veteran Affairs	
------------------------------	--	---	--	--	--	--	--	--	--	---	--	---	--	--	--	--	--	--	--

BID DOCUMENTS