

GENERAL NOTES:

A. EXISTING MECHANICAL WORK IS INDICATED BY BEING SHOWN LIGHT.

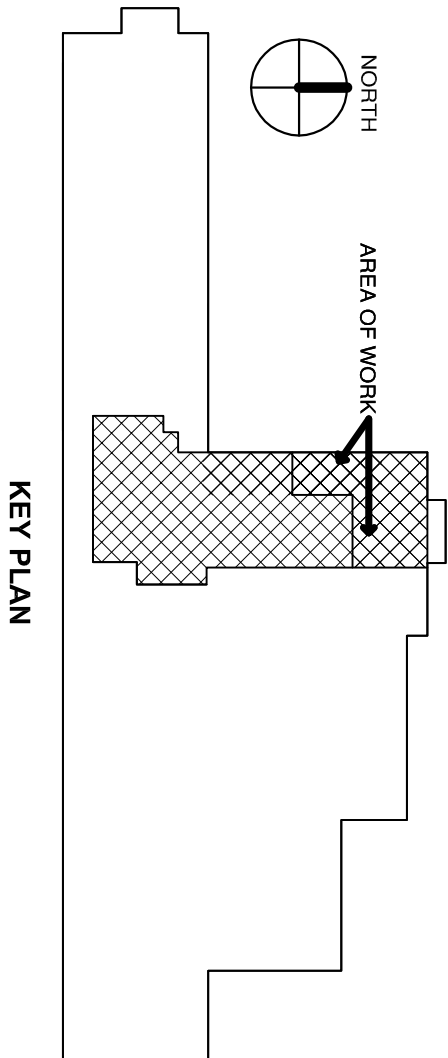
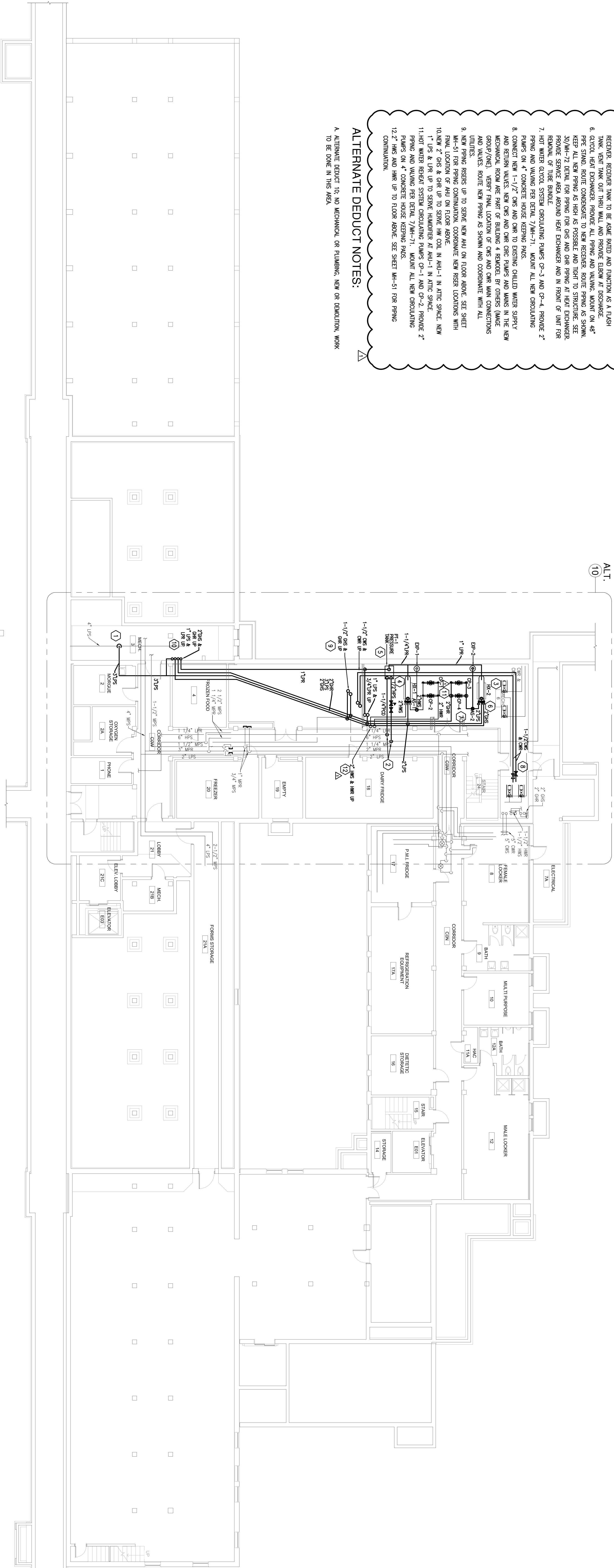
B. NEW MECHANICAL WORK IS INDICATED BY BEING SHOWN BOLD.

KEYED NOTES:

1. CONNECT NEW 3" UPS TO EXISTING 4" UPS PIPING, ROUTE AS SHOWN.
2. CONNECT NEW 1-1/4" UP TO EXISTING 1-1/4" UP AND ROUTE AS SHOWN. CONNECT 2" HWS TO EXISTING 6" PPS MAIN, PROVIDE PRESSURE REDUCING VALVE AT 50 PPS. PROVIDE PRESSURE REDUCING VALVE AT 50 PPS.
3. COORDINATE LOCATION OF NEW HVAC EQUIPMENT WITH EXISTING CIRCULATING PIPING AND PIPING IN ADJOINING MECHANICAL ROOM.
4. HOT WATER HW-1, MOUNT ON 48" PIPE STAND, VERIFY ROUTING OF UP TO CONDENSATE RECEIVER, PROVIDE ALL PIPING AND VALUING, ROUTE ALL NEW PIPING TO NEW RECEIVER. SEE DETAIL 30/WH-72 FOR PIPING FOR HWS AND HW PIPING AT HEAT EXCHANGER, PROVIDE SERVICE AREA AROUND HEAT EXCHANGER AND IN FRONT OF UNIT FOR REMOVAL OF TUBE BUNDLE.
5. CONDENSATE PRESSURE TANK/RECEIVER LOCATION, MOUNT ON 4" CONCRETE PAD, ROUTE BOTH HEAT EXCHANGER PIPING FROM EACH UNIT TO CONDENSATE RECEIVER, RECEIVER TANK TO BE USED RATED AND FUNCTION AS A FLASH ARRESTOR, PROVIDE ALL PIPING AND VALUING, MOUNT ON 48" PIPE STAND, ROUTE CONDENSATE TO NEW RECEIVER, ROUTE PIPING AS SHOWN, KEEP ALL NEW PIPING AS HIGH AS POSSIBLE AND TIGHT TO STRUCTURE, SEE 30/WH-72 DETAIL FOR PIPING FOR GAS AND GAS PIPING AT HEAT EXCHANGER, PROVIDE SERVICE AREA AROUND HEAT EXCHANGER AND IN FRONT OF UNIT FOR REMOVAL OF TUBE BUNDLE.
6. GAS/OIL HEAT EXCHANGER, PROVIDE ALL PIPING AND VALUING, MOUNT ON 48" PIPE STAND, ROUTE CONDENSATE TO NEW RECEIVER, ROUTE PIPING AS SHOWN, KEEP ALL NEW PIPING AS HIGH AS POSSIBLE AND TIGHT TO STRUCTURE, SEE 30/WH-72 DETAIL FOR PIPING FOR GAS AND GAS PIPING AT HEAT EXCHANGER, PROVIDE SERVICE AREA AROUND HEAT EXCHANGER AND IN FRONT OF UNIT FOR REMOVAL OF TUBE BUNDLE.
7. PIPING AND VALUING PER DETAIL 7/WH-71, MOUNT ALL NEW CIRCULATING PIPING ON 4" CONCRETE HOUSE KEEPING PADS.
8. CONNECT NEW 1-1/2" CWS AND CWS TO EXISTING CHILLED WATER SUPPLY AND RETURN VALVES, NEW CWS AND CWS CIRC PUMPS AND MAINS IN THE NEW MECHANICAL ROOM ARE PART OF BUILDING 4 REMODEL, BY OTHERS (IMAGE GROUP/ONES), VERIFY FINAL LOCATION OF CWS AND CWS MAIN CONNECTIONS AND VALVES, ROUTE NEW PIPING AS SHOWN AND COORDINATE WITH ALL EXISTING PIPING.
9. NEW PIPING RISERS UP TO SERVE NEW AHU ON FLOOR ABOVE, SEE SHEET WH-51 FOR PIPING CONTINUATION, COORDINATE NEW RISER LOCATIONS WITH FINAL LOCATION OF AHU ON FLOOR ABOVE.
10. NEW 2" GAS & GAS UP TO SERVE HW COIL IN AHU-1 IN ATTIC SPACE, NEW 1" UPS & UP UP TO SERVE HUMIDIFIER AT AHU-1 IN ATTIC SPACE.
11. HOT WATER REHEAT SYSTEM CIRCULATING PIPING OP-1 AND OP-2, PROVIDE 2" PIPING AND VALUING PER DETAIL 7/WH-71, MOUNT ALL NEW CIRCULATING PIPING ON 4" CONCRETE HOUSE KEEPING PADS.
12. 2" HWS AND HW UP TO FLOOR ABOVE, SEE SHEET WH-51 FOR PIPING CONTINUATION.

ALTERNATE DEDUCT NOTES:

A. ALTERNATE DEDUCT 10, NO MECHANICAL OR PLUMBING, NEW OR REMEDIATION, WORK TO BE DONE IN THIS AREA.



VOLUME 2 - CONSTRUCTION DOCUMENTS
SPRINKLERED

PROJECT TEAM	
ARCHITECT: BIL. HARRIS, INC. 1000 Highway 101 441 Cedar St. St. Paul, MN 55101 www.bilharris.com 612-554-4000	MECHANICAL/ELECTRICAL ENGINEERS: HARRIS, INC. 1000 Highway 101 441 Cedar St. St. Paul, MN 55101 www.bilharris.com 612-554-4000
STRUCTURAL: HARRIS, INC. 1000 Highway 101 441 Cedar St. St. Paul, MN 55101 www.bilharris.com 612-554-4000	CIVIL/SITEWORK: Anderson Engineering & Inc. 1000 Highway 101 441 Cedar St. St. Paul, MN 55101 www.bilharris.com 612-554-4000
FIRE PROTECTION: Summit Fire Consulting 1000 Highway 101 441 Cedar St. St. Paul, MN 55101 www.bilharris.com 612-554-4000	ENVIRONMENTAL SERVICES: Environmental Services 1000 Highway 101 441 Cedar St. St. Paul, MN 55101 www.bilharris.com 612-554-4000
FOODSERVICE DESIGN: ROBERT TRING & ASSOCIATES, INC. 1000 Highway 101 441 Cedar St. St. Paul, MN 55101 www.bilharris.com 612-554-4000	
ARCHITECTS/ENGINEERS	
HDR HARRIS, INC.	
Project Title: MECHANICAL HVAC AND PIPING BASEMENT - BUILDING 4	
Location: 4801 Veterans Drive, St. Cloud, MN 55303	Project Number: 656-521 / 133859
Date: 12/09/2011	Building Number: 4
Prepared by: DD/DOCK	Grading number: MH-50
Drawn by: JB/BOARDMAN	
Office of Construction and Facilities Management Department of Veterans Affairs	