


KEYED CONSTRUCTION NOTES

- 1 PROVIDE NEW 4' X 5' VIEWING WINDOW. WINDOW BASE SHALL BE 3" AFF.
- 2 PROVIDE "MOCK" UTILITY HEADWALL IN AREAS INDICATED ON ELEVATIONS. DO NOT PROVIDE SERVICES FOR UTILITIES.
- 3 VANITY CABINETRY WITH INTEGRAL COUNTER AND SINK. SEE SECTION 06 20 00.
- 4 INFILL EXISTING DOOR/OPENING IN EXISTING CMU WALL WITH NEW CMU BLOCK TO MATCH EXISTING.
- 5 INFILL AND REMOVE CMU BLOCK AND TILE AS NECESSARY TO PROVIDE OPENINGS AND INSTALL BOTH 4X5' VIEWING WINDOWS.
- 6 PATCH THE INSIDE FACE OF EXTERIOR WALLS AFTER ALL REMOVALS ARE COMPLETE. LEAVE WALL FLAT, SMOOTH, & PLANNER, READY TO RECEIVE PAINT.
- 7 PAINT ALL WALLS.
- 8 PAINT ALL DOOR FRAMES AND TRIM.
- 9 REMOVE EXISTING EXTERIOR WINDOW AND FRAME. INFILL OPENING AFTER REMOVAL WITH MATERIALS TO MATCH EXISTING WALL CONSTRUCTION. THIS INCLUDES EXTERIOR WALL CONSTRUCTION AND INTERIOR WALL CONSTRUCTION.
- 10 CONSTRUCT NEW INTERIOR WALLS IN ACCORDANCE WITH DETAILS, TYPE INDICATED ON FLOOR PLAN AND ALL APPLICABLE SPECIFICATION. ALL WALLS SHALL EXTEND TO 8' 6" AT TOP OF HEADER, AND SHALL INTEGRATE WITH SUSPENDED CEILING SYSTEM AND ALL BUILDING SYSTEMS. BUILD WALLS TO ROOF IN 16-13 AND 16-14.
- 11 PROVIDE COUNTERTOP. BOTTOM OF COUNTER SHALL BE 30" AFF
- 12 PROVIDE NEW 4' X 5' ALUMINUM EXTERIOR WINDOW AND FRAME. REFER TO SPECIFICATION 08 51 13.

GENERAL NOTES:

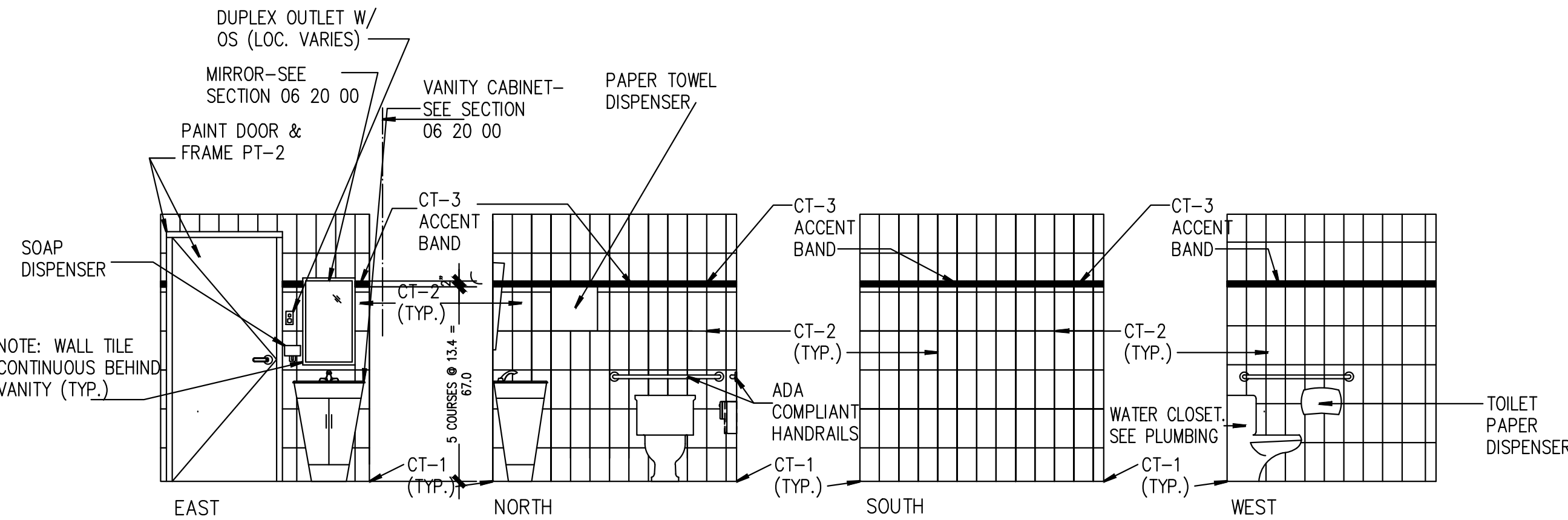
- A. CORE DRILL CONCRETE SLABS & CMU PARTITIONS AS REQUIRED FOR MECH/ELECTRICAL SERVICES. PROVIDE OPENING PIPE SLEEVES PER 6/P-100. REFER TO HVAC, PLUMBING, FIRE PROTECTION, & ELECTRICAL DRAWINGS & SPECIFICATIONS FOR LOCATIONS AND SIZES.
- B. DIMENSIONS ARE CLEAR DIMENSIONS FROM FINISHED GWB OR PLASTER, UNLESS NOTED OTHERWISE. WALL DIMENSIONS AND LAYOUT TO BE SCALED FROM DRAWING AND WILL REQUIRE FIELD VERIFICATION.
- C. WHEN REMOVALS ARE COMPLETE, PATCH ALL HOLES AND REPAIR ALL DAMAGE TO EXISTING CONSTRUCTION. LEAVE ALL SURFACES SMOOTH, LEVEL, PLUMB, ALIGNED WITH ADJACENT SURFACES, & READY TO ACCEPT FINISHES.
- D. USE WALL TYPE  FOR NEW WALL PARTITIONS UNLESS NOTED OTHERWISE.
- E. PROVIDE FIRESTOPPING FOR ALL FLOOR & WALL PENETRATIONS PER 6/P-100 AND 7/P-100.
- F. INFILL SLAB OPENINGS AND DRAINS PER 6/A-102.
- G. ALL EXISTING FURNISHINGS & EQUIPMENT TO BE TEMPORARILY RELOCATED BY CONTRACTOR. CONTRACTOR TO RELOCATE TO ORIGINAL POSITION AFTER COMPLETION OF WORK IN EACH ROOM.

DOOR SCHEDULE

DOOR NO.	LOCATION	DOOR						FRAME				HDWR SET	FIRE LABEL	NOTES
		TYPE	MAT'L	HGT	WIDTH	THK	FINISH	MAT'L	HEAD	JAMB	FINISH			
101	16-01a ANTI-ROOM	A	WD	7'-0"	2'-6"	1 1/2"	---	H.M.	ALM	H.M.	PT-2	1	-	FOR HOWR SET & FRAME REFERENCE SPECIFICATION 087100 & 081113
102	16-01 EDUCATION OFFICE SUITE	A	WD	7'-0"	2'-6"	1 1/2"	---	EXISTING	H.M.	PT-2	1	-	-	FOR HOWR SET & FRAME REFERENCE SPECIFICATION 087100 & 081113
103	16-02 EDUCATION MANAGER OFFICE	A	WD	7'-0"	2'-6"	1 1/2"	---	EXISTING	H.M.	PT-2	1	-	-	FOR HOWR SET & FRAME REFERENCE SPECIFICATION 087100 & 081113
104	16-03 EDUCATION TRAINING CENTER	A	WD	7'-0"	2'-6"	1 1/2"	---	H.M.	H.M.	H.M.	PT-2	1	-	FOR HOWR SET & FRAME REFERENCE SPECIFICATION 087100 & 081113
105	16-04 SIM-MAN TRAINING ROOM 1	A	WD	7'-0"	2'-6"	1 1/2"	---	H.M.	H.M.	H.M.	PT-2	1	-	FOR HOWR SET & FRAME REFERENCE SPECIFICATION 087100 & 081113
106	16-05 SIM-MAN TRAINING ROOM 2	A	WD	7'-0"	2'-6"	1 1/2"	---	H.M.	H.M.	H.M.	PT-2	1	-	FOR HOWR SET & FRAME REFERENCE SPECIFICATION 087100 & 081113
107	16-07 SIM-MAN CONTROL CENTER	A	WD	7'-0"	2'-6"	1 1/2"	---	H.M.	H.M.	H.M.	PT-2	1	-	FOR HOWR SET & FRAME REFERENCE SPECIFICATION 087100 & 081113
108	16-06 ADMINISTRATIVE OFFICE SUITE	A	WD	7'-0"	2'-6"	1 1/2"	---	H.M.	H.M.	H.M.	PT-2	1	-	FOR HOWR SET & FRAME REFERENCE SPECIFICATION 087100 & 081113
109	16-10 MANAGER OFFICE 1	A	WD	7'-0"	2'-6"	1 1/2"	---	H.M.	H.M.	H.M.	PT-2	1	-	FOR HOWR SET & FRAME REFERENCE SPECIFICATION 087100 & 081113
110	16-11 MANAGER OFFICE 2	A	WD	7'-0"	2'-6"	1 1/2"	---	H.M.	H.M.	H.M.	PT-2	1	-	FOR HOWR SET & FRAME REFERENCE SPECIFICATION 087100 & 081113
111	16-12 MANAGER OFFICE 3	A	WD	7'-0"	2'-6"	1 1/2"	---	H.M.	H.M.	H.M.	PT-2	1	-	FOR HOWR SET & FRAME REFERENCE SPECIFICATION 087100 & 081113
112	16-13 ELECTRIC CLOSET	A	WD	7'-0"	2'-6"	1 1/2"	---	H.M.	H.M.	H.M.	PT-2	1	-	FOR HOWR SET & FRAME REFERENCE SPECIFICATION 087100 & 081113
113	16-14 COMM. CLOSET	A	WD	7'-0"	2'-6"	1 1/2"	---	H.M.	H.M.	H.M.	PT-2	1	-	FOR HOWR SET & FRAME REFERENCE SPECIFICATION 087100 & 081113
114	16-08 RESTROOM	A	WD	7'-0"	2'-6"	1 1/2"	---	H.M.	H.M.	H.M.	PT-2	1	-	FOR HOWR SET & FRAME REFERENCE SPECIFICATION 087100 & 081113
115	16-09 RESTROOM	A	WD	7'-0"	2'-6"	1 1/2"	---	H.M.	H.M.	H.M.	PT-2	1	-	FOR HOWR SET & FRAME REFERENCE SPECIFICATION 087100 & 081113

ROOM FINISH SCHEDULE

RM. NO.	ROOM NAME	FLOOR		BASE		WALLS		CEILING (SEE NOTE 4)			REMARKS	
		MTL.	COLOR	MTL.	COLOR	MTL.	FIN.	COLOR	MTL.	FIN.		COLOR
16-01a	ANTI-ROOM	VCT	VCT-2	VB	VB-2	GWB/PL	PT	PT-4	ACT	1	—	
16-01	EDUCATION OFFICE SUITE	CPT	CPT-1	VB	VB-2	GWB/PL	PT	PT-1/3	ACT	1	—	PT-3 ACCENT PAINT, SEE DETAIL 7/A-101
16-02	EDUCATION MANAGER	CPT	CPT-1	VB	VB-2	GWB/PL	PT	PT-1/4	ACT	1	—	PT-4 ACCENT PAINT, SEE DETAIL 7/A-101
16-03	EDUCATION TRAINING CENTER	CPT	CPT-1	VB	VB-2	GWB/PL	PT	PT-1/5	ACT	1	—	PT-5 ACCENT PAINT, SEE DETAIL 1&2/A-103
16-04	SIM-MAN TRAINING CENTER 1	VCT	VCT-1	VB	VB-2	GWB/PL	PT	PT-1/4	ACT	1	—	PT-4 ACCENT PAINT, SEE DETAIL 3/A-103
16-05	SIM-MAN TRAINING CENTER 2	VCT	VCT-1	VB	VB-2	GWB/PL	PT	PT-1/3	ACT	1	—	PT-3 ACCENT PAINT, SEE DETAIL 3/A-103
16-06	ADMINISTRATIVE OFFICE SUITE	CPT	CPT-1	VB	VB-1	GWB/PL	PT	PT-1/4	ACT	1	—	PT-4 ACCENT PAINT, SEE DETAIL 3&4/A-101
16-07	SIM-MAN CONTROL CENTER	VCT	VCT-1	VB	VB-2	GWB/PL	PT	PT-1	ACT	1	—	PT-3 ACCENT PAINT, SEE DETAIL 7/A-101
16-08	RESTROOM	CT	CT-1	CT	CT-2	GWB/PL	CT	CT-2/3	ACT	1	—	ACCENT STRIP, SEE DETAIL 2/A-100
16-09	RESTROOM	CT	CT-1	CT	CT-2	GWB/PL	CT	CT-2/3	ACT	1	—	ACCENT STRIP, SEE DETAIL 2/A-100
16-10	MANAGER OFFICE	CPT	CPT-1	VB	VB-1	GWB/PL	PT	PT-1/4	ACT	1	—	PT-4 ACCENT PAINT, SEE DETAIL 1/A-102
16-11	MANAGER OFFICE	CPT	CPT-1	VB	VB-1	GWB/PL	PT	PT-1/4	ACT	1	—	PT-4 ACCENT PAINT, SEE DETAIL 1/A-101
16-12	MANAGER OFFICE	CPT	CPT-1	VB	VB-1	GWB/PL	PT	PT-1/4	ACT	1	—	PT-4 ACCENT PAINT, SEE DETAIL 2/A-101
16-13	ELECTRIC CLOSET	S	S-1	VB	VB-1	GWB/PL	PT	PT-1	EX	—	—	
16-14	COMM. CLOSET	S	S-1	EX.	VB-1	GWB/PL	PT	PT-1	EX	—	—	

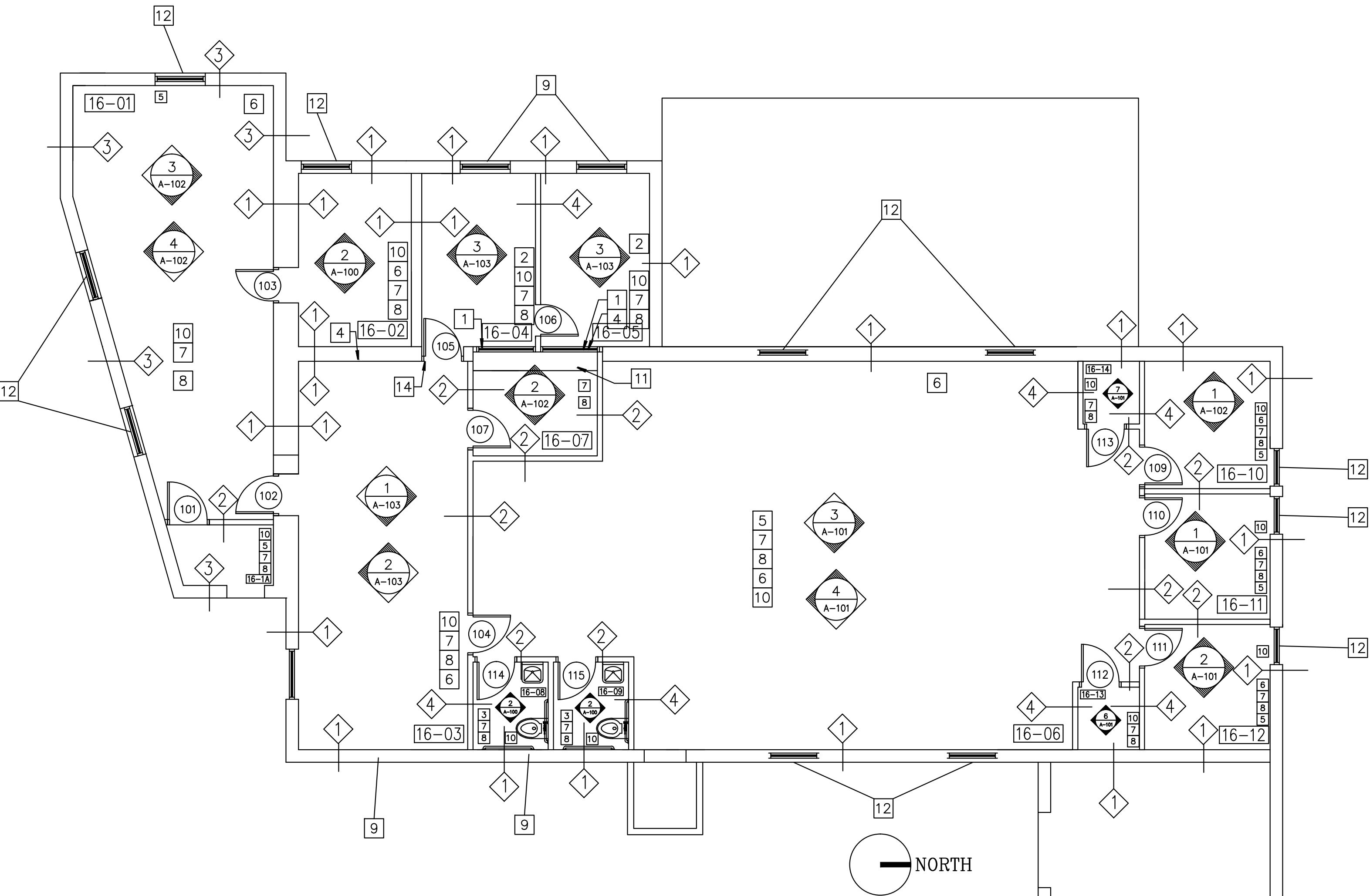


2 ELEVATION - RESTROOM 16-08 & 16-09 (TYP)

1/4"=1'-0"

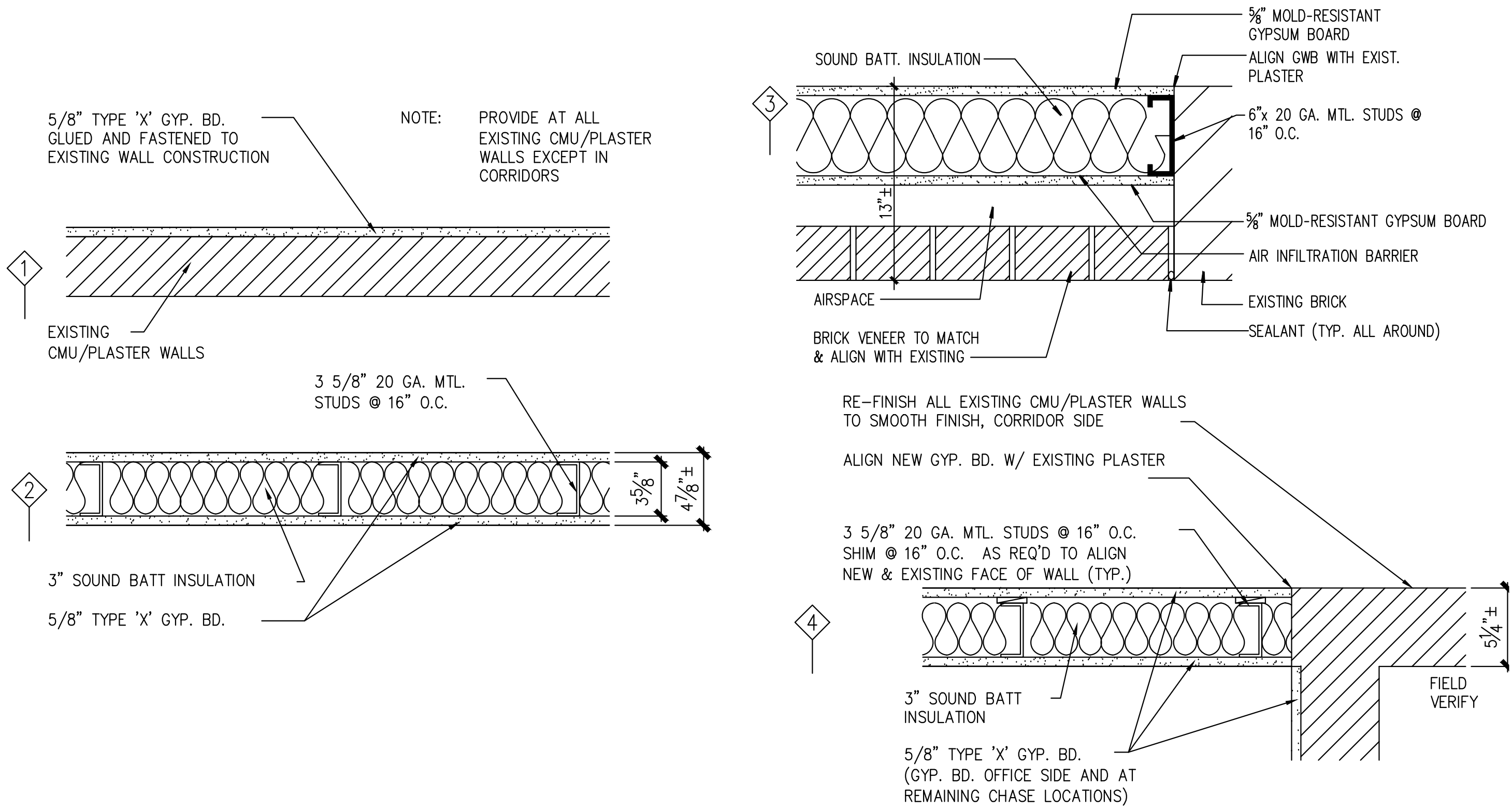
3 WALL TYPE ELEVATIONS (TYP)

1-1/2"=1'-0"

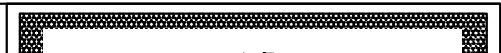


1 FLOOR PLAN

1/8"=1'-0"



FINISH / MATERIALS SCHEDULE		
REF #	MANUFACTURER/PRODUCT NAME	NO./COLOR/SIZE
SEALANT AND CAULKING (SEE SPEC SECTION 07 92 00)		
S-1	SONNEBORN (SEALANT)	MATCH WALL PAINT COLOR
S-2	SONNEBORN	GRAY TO MATCH MORTAR (EXTERIOR MASONRY)
ACOUSTICAL CEILING (SEE SPEC SECTION 09 51 00)		
ACT-1	ARMSTRONG	ULTIMA HIGH WASHABILITY, SQUARE IN LAY, #1914, WHITE, 24"x48"x3/4", GRID STYLE 15/16"
RESILIENT TILE FLOORING (SEE SPEC SECTION 09 65 19)		
VCT FLOOR PATTERN - REFER TO PLAN FOR DESIGN INTENT AND COLOR LOCATIONS		
VCT-1	AZROCK, CORTINA GRANDE	COLOR: C6412 HEATHER 16" x 16", LOCATION: TYPICAL VCT, OFFICE AND CORRIDOR
VCT-2	AZROCK, CORTINA GRANDE	COLOR: C6410 CARMEL 16" x 16", LOCATION: ACCENT COLOR CORRIDOR
VCT-3	AZROCK, CORTINA GRANDE	COLOR: C6408 SAGE 16" x 16", LOCATION: ACCENT COLOR CORRIDOR
VINYL BASE (SEE SPEC SECTION 09 65 13)		
VB-1	JOHNSONITE - COLOR 129 SILK	6" H COVE BASE, LOCATION: OFFICES
VB-2	JOHNSONITE - STYLE MW-XX-F, COLOR 129 SILK	6" H MILLWORKS, LOCATION: CORRIDORS
PAINT (SEE SPEC SECTION 09 91 00)		
PT-1	PITTSBURGH PAINT COLOR MATCH MAB PAINTS, 98514P TROPICAL STRAW	LOCATION: GENERAL PAINT
PT-2	PITTSBURGH PAINT COLOR MATCH MAB PAINTS, 98533P PALE PORTABELLO	LOCATION: DOOR FRAMES, PAINTED DOORS, AND ACCENT WALLS
PT-3	PITTSBURGH PAINT COLOR MATCH BENJAMIN MOORE, HC-51 AUDSON RUSSET	LOCATION: ACCENT WALL (RED) REFER TO PLAN FOR LOCATION
PT-4	PITTSBURGH PAINT COLOR MATCH BENJAMIN MOORE, 2142-40 DRY SAGE	LOCATION: ACCENT WALL (GREEN) REFER TO PLAN FOR LOCATION
PT-5	PITTSBURGH PAINT COLOR MATCH BENJAMIN MOORE, 2133-40 CINNAMON SLATE	LOCATION: ACCENT WALL (PURPLE) REFER TO PLAN FOR LOCATION
CARPET (SEE SPEC SECTION 09 68 00)		
CPT-1	J&J ENVISION, IMPULSE II MODULAR 7445	24" x 24" TILE, COLOR: 1430 PLANT A TREE
CERAMIC TILE (SEE SPEC SECTION)		
CT-1	BEST TILE "ILVA, S.A."	LANDSCAPES "MEADOW", 6.7"x6.7"
CT-2	BEST TILE "ILVA, S.A."	LANDSCAPES "BEACH", 6.7"x13.4"
CT-3	BEST TILE "ILVA, S.A."	LANDSCAPES "BEACH LISTEL", 2"x13.4"
INTERIOR SIGNS (SEE SPEC SECTION 10 14 00)		
IS-1	2/90 MODULAR SIGN SYSTEM (NO EQUAL) 7x9 THIN PROFILE MODULAR SIGN COMPRISED OF 3 INSERTS	(1) 3x9 ROOM NUMBER/BRAILLE COLOR #280 - SAGE GREEN WITH LETTERS #232 - OYSTER (2) EACH 2x9 MAGNETIC INSERT COLOR: #232 OYSTER (2) END CAPS AND TRIM COLOR: #280 SAGE GREEN
FINISH SCHEDULE NOTES:		
1. RE-PAINT AND TOUCH UP AREAS TO PROVIDE PROFESSIONAL QUALITY FINISHES.		
2. SEE ELEVATIONS FOR ACCENT WALL PAINTS.		
3. SEE CEILING PLAN FOR CEILING HEIGHTS AND ACT TYPES.		
4. SEE DETAIL 6/A-102 FOR FLOORING INSTALLATION INFORMATION.		

Revisions:		CONSULTANTS:	ARCHITECT/ENGINEERS:	Drawing Title FLOOR PLAN, SCHEDULES & ELEVATIONS		Project Title RENOVATE FOR EDUCATION SERVICE AND ADMINISTRATIVE SPACE.		Project Number 528A7-12-732		
				Approved: Project Director		Location SYRACUSE VAMC		Building Number 16		
						Drawing Number A-100				
						5 OF 23				
							Date 6/27/2012		Checked CF	
Revisions:	Date									