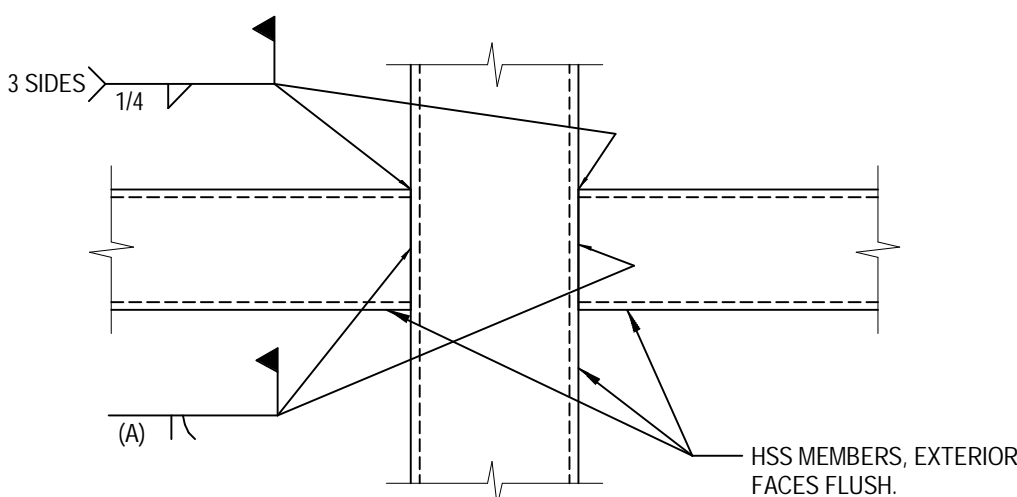


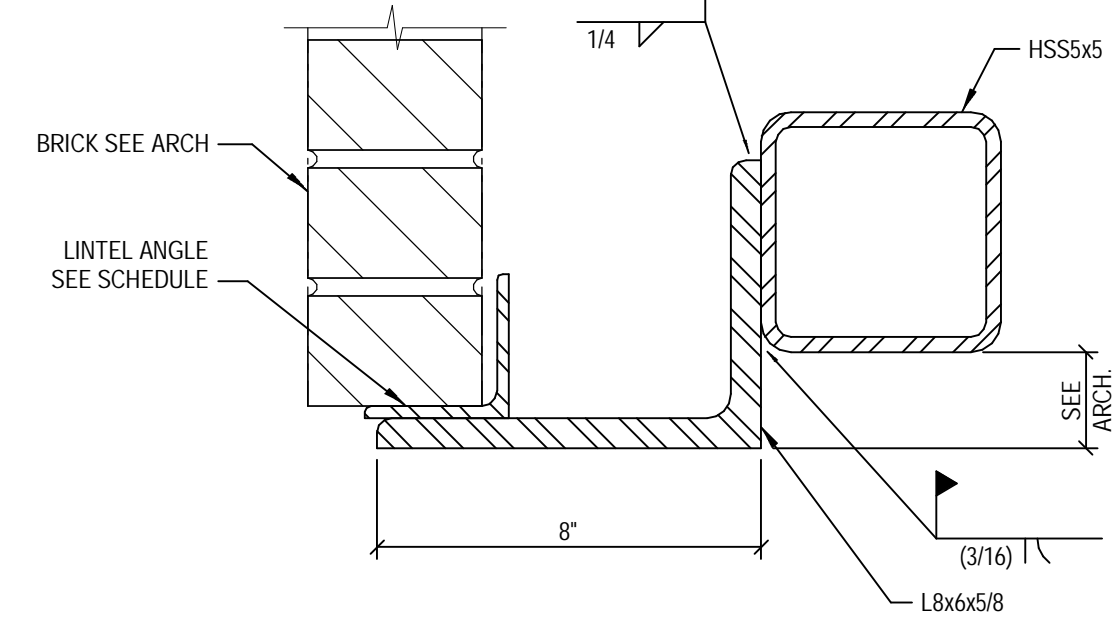
three inches = one foot
one and one-half inches = one foot
one inch = one foot
three-quarters inch = one foot
one-half inch = one foot
one-quarter inch = one foot
three-eighths inch = one foot
one-eighth inch = one foot
one-eighth inch = one foot



FLARE BEVEL GROOVE WELD SCHEDULE	
HORIZONTAL TUBE SIZE	A
HSS5x5 _l	3/8"
HSS5x5 _h	1/2"
HSS5x5 _l	1/2"

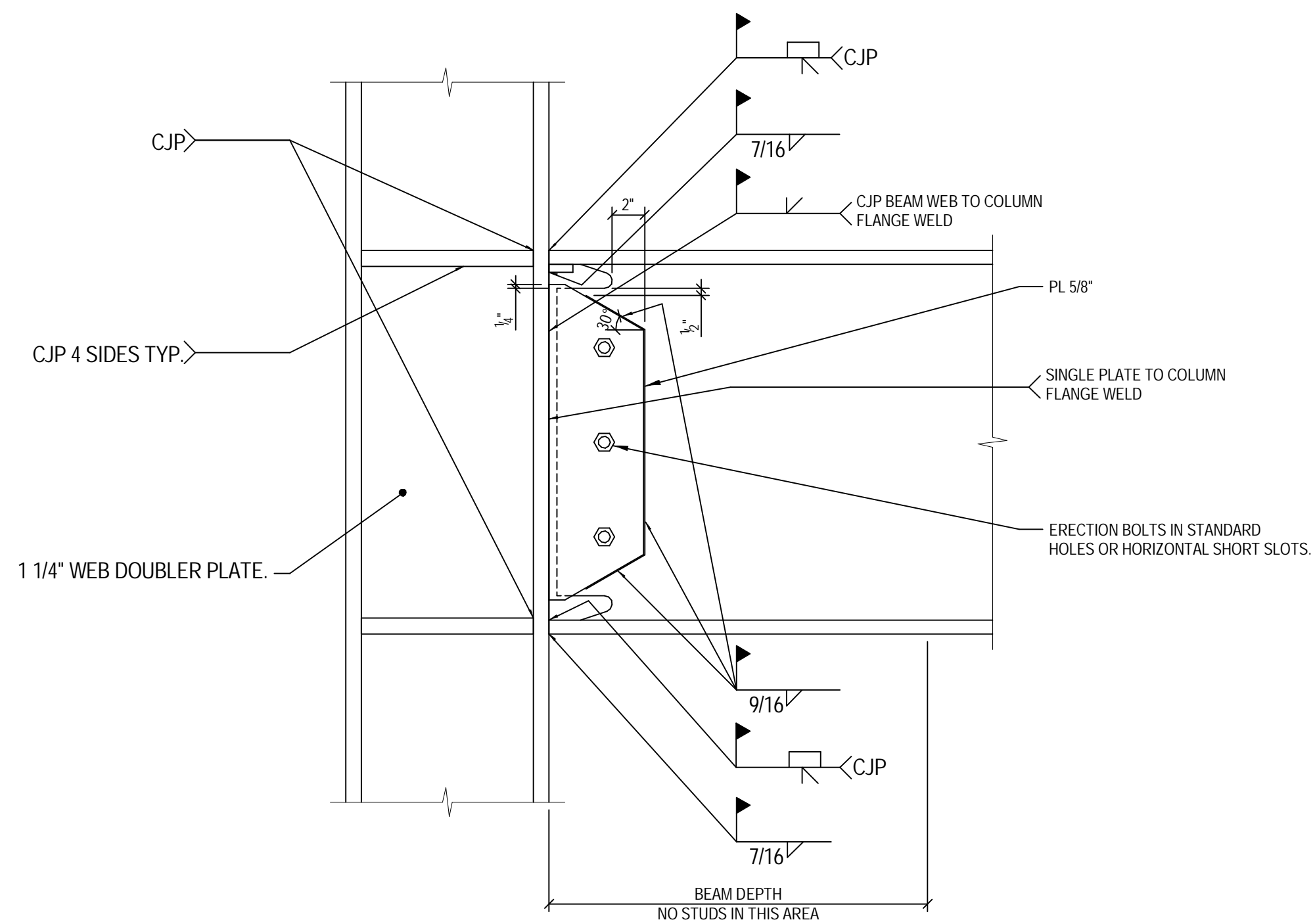
13 DETAIL

2.3S302 1 1/2" = 1'-0"



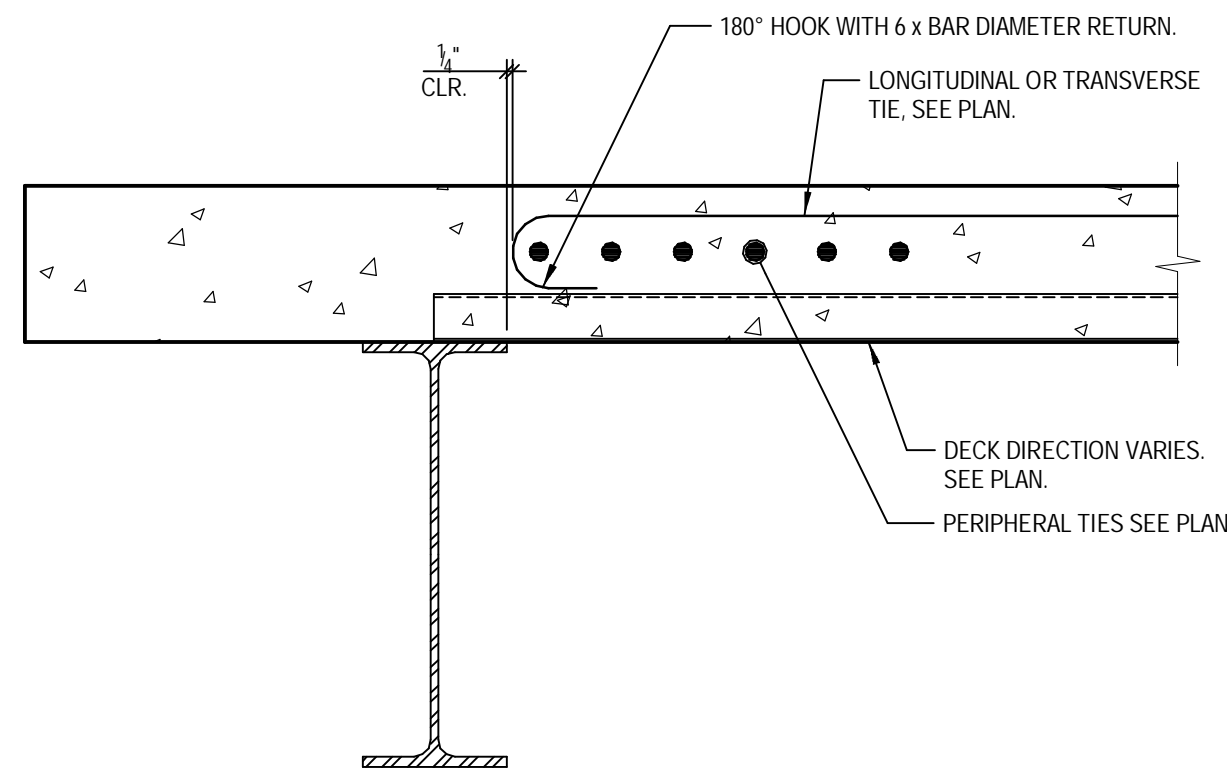
14 DETAIL

2.3S302 3" = 1'-0"



15 DETAIL

2.3S302 1 1/2" = 1'-0"

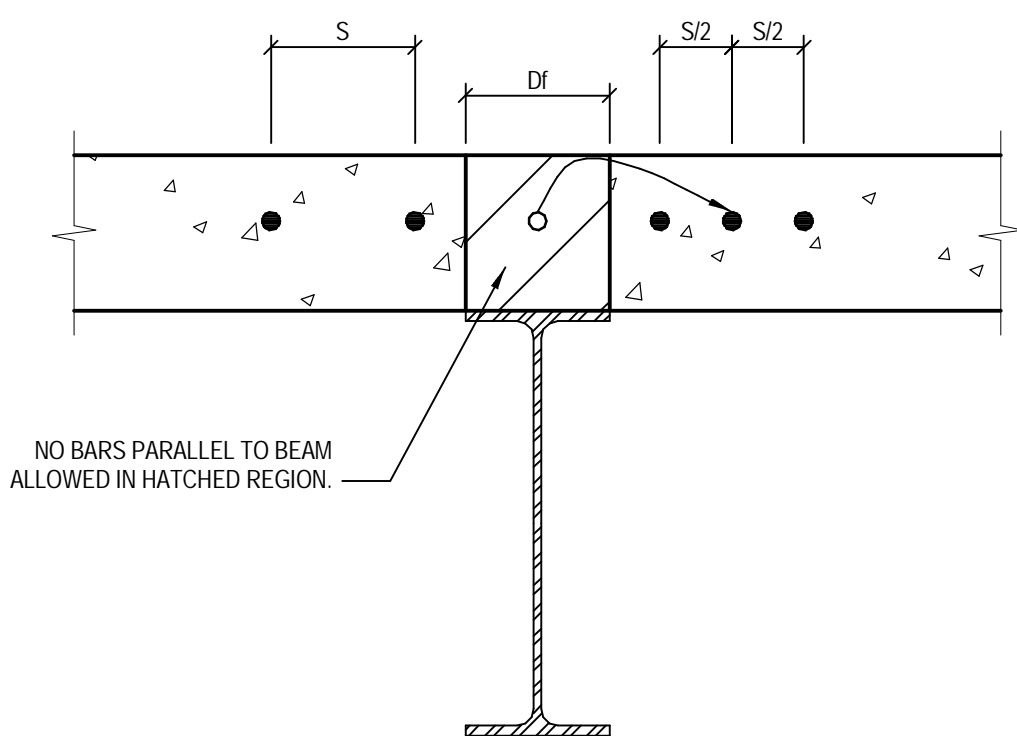


TYPICAL LONGITUDINAL/TRANSVERSE/PERIPHERAL REINFORCEMENT BAR HOOKS

- NOTES:
- ALL LONGITUDINAL AND TRANSVERSE CONTINUOUS TO INTERSECTION WITH PERPENDICULAR REINFORCEMENT. HOOK LONGITUDINAL AND TRANSVERSE REINFORCEMENT TO PERPENDICULAR REINFORCEMENT AS SHOWN.
 - SPURCE REINFORCEMENT PER NOTE 4 DETAIL. 102.3S302.

16 DETAIL

2.3S302 1 1/2" = 1'-0"



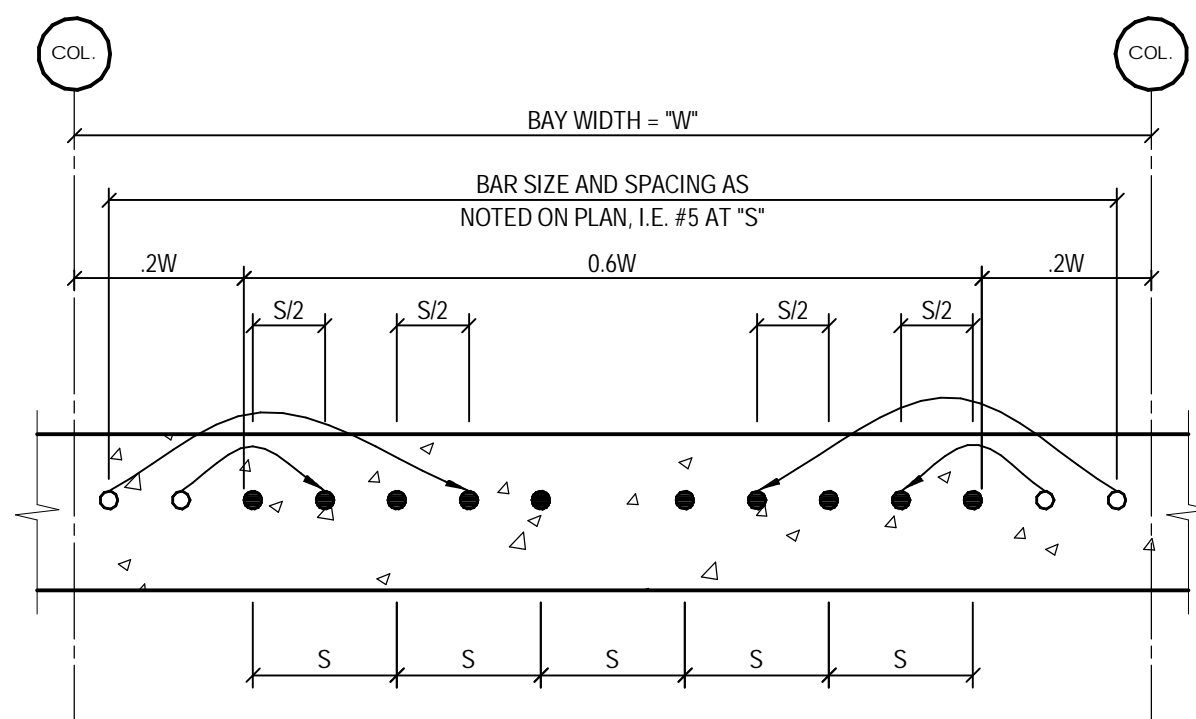
PARALLEL BAR RELOCATION

NOTES:

- WHEN BARS RUNNING PARALLEL TO BEAMS ARE LOCATED DIRECTLY ABOVE BEAM FLANGE, BAR SHALL BE RELOCATED BETWEEN NEXT TWO ADJACENT BARS.

17 DETAIL

2.3S302 1 1/2" = 1'-0"



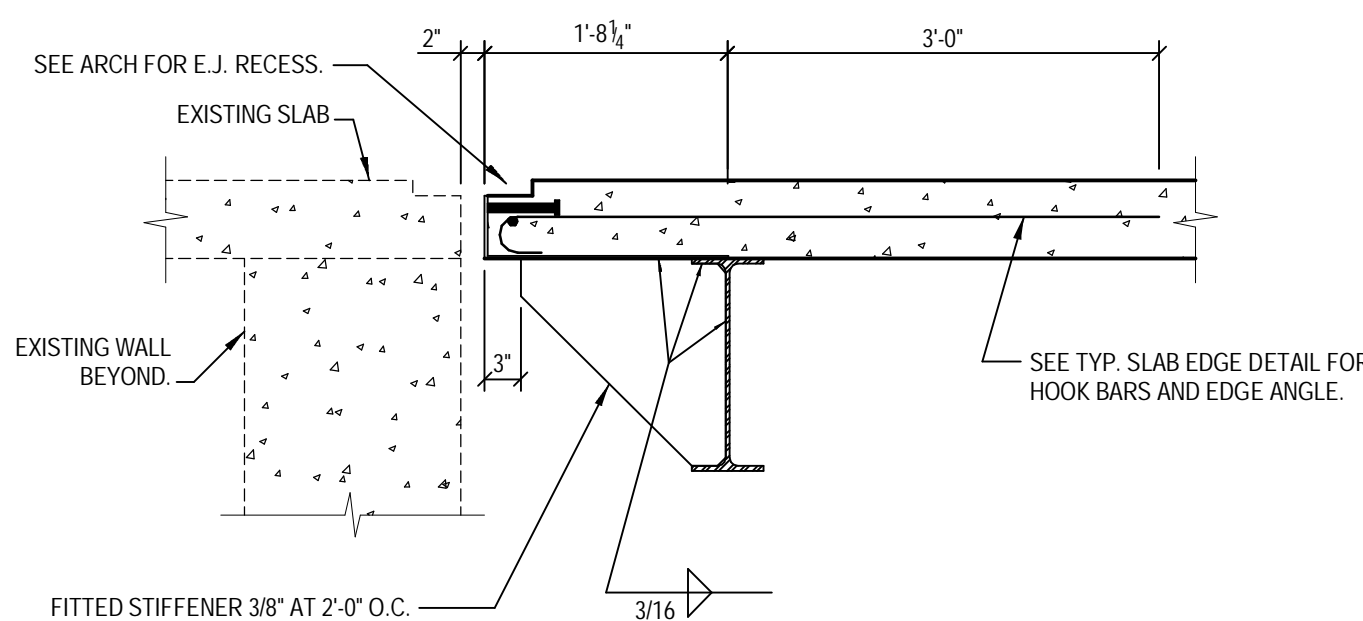
PLACING OF LONGITUDINAL AND TRANSVERSE REINFORCEMENT

NOTES:

- QUANTITY OF BARS IS DETERMINED BY DIVIDING BAY WIDTH "W" BY BAR SPACING.
- ALL BARS MUST BE PLACED WITHIN THE MIDDLE 0.6W OF THE BAY.
- BARS IN THE 0.2W END REGION OF BAY SHALL BE RELOCATED INTO THE MIDDLE 0.6W OF THE BAY.
- LONGITUDINAL TRANSVERSE REINFORCEMENT TIES SHALL BE SPLICED ONLY IN THE MIDDLE 0.6W OF BAY. USE TYPE 1 MECHANICAL SPLICES OR CLASS B TIES OR CLASS B LAP SPICES.

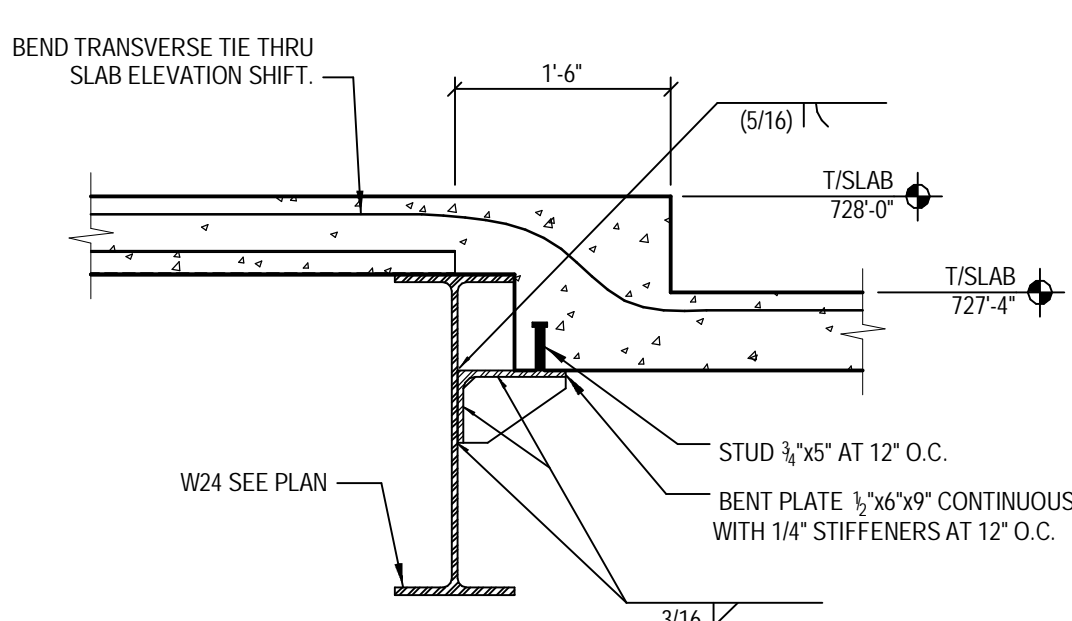
18 DETAIL

2.3S302 1 1/2" = 1'-0"



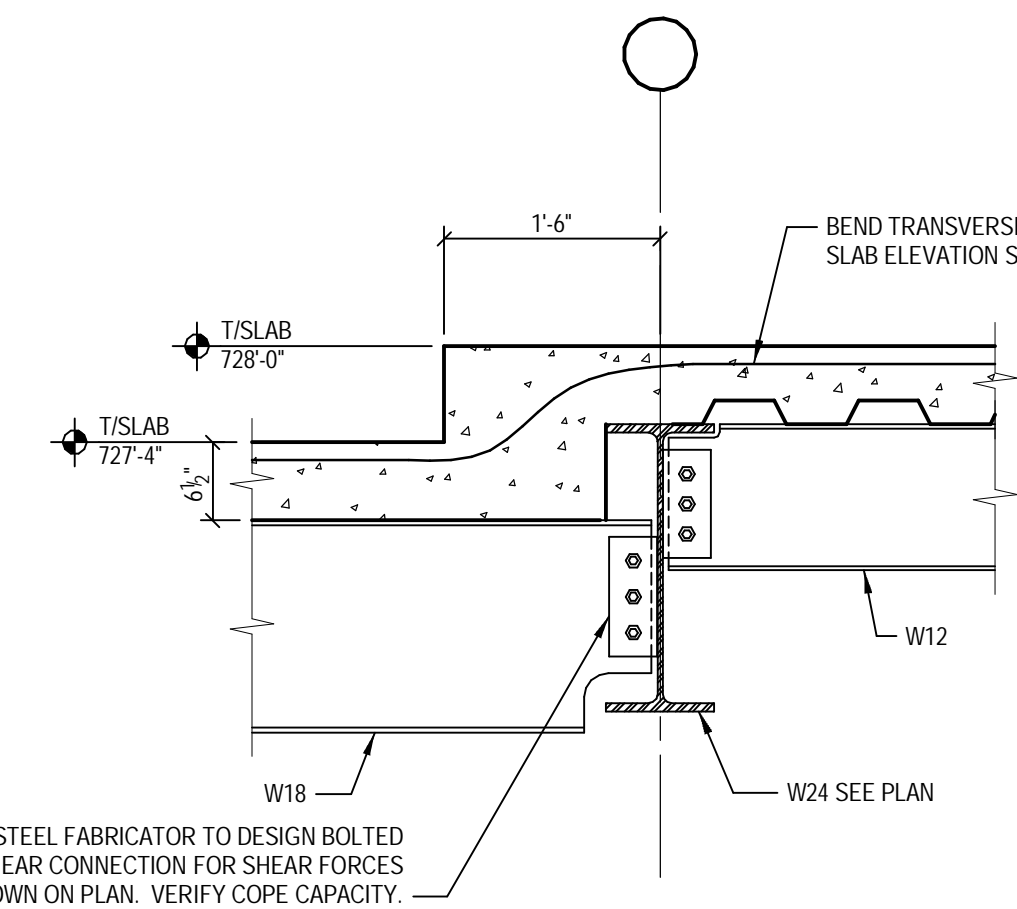
19 DETAIL

2.3S302 3/4" = 1'-0"



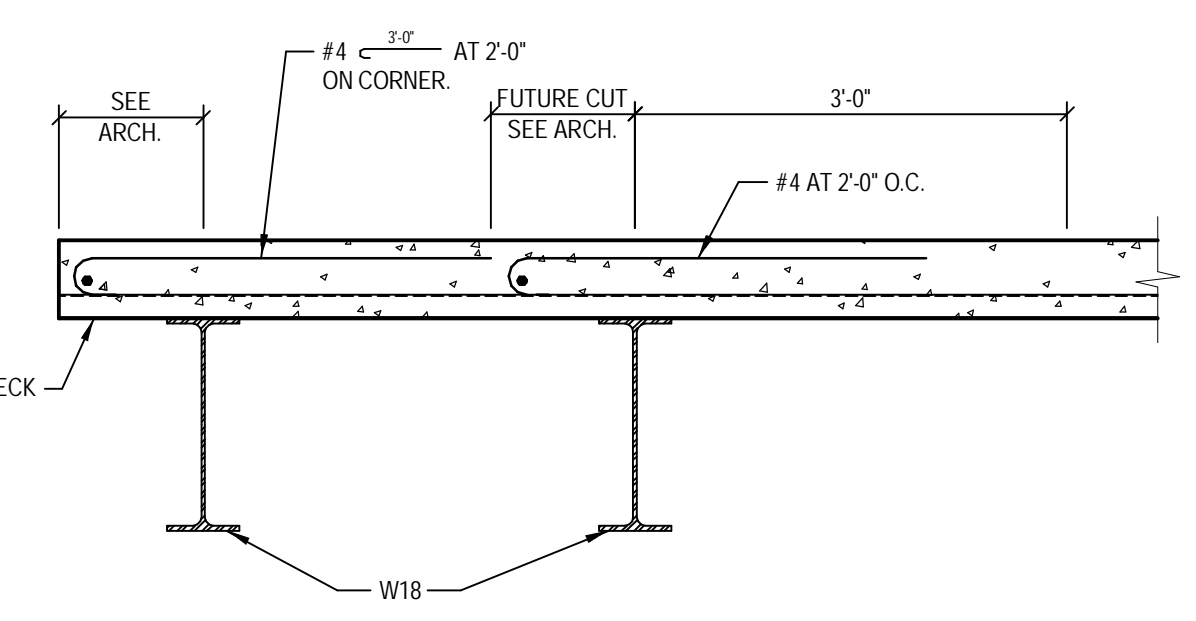
20 DETAIL

2.3S302 3/4" = 1'-0"



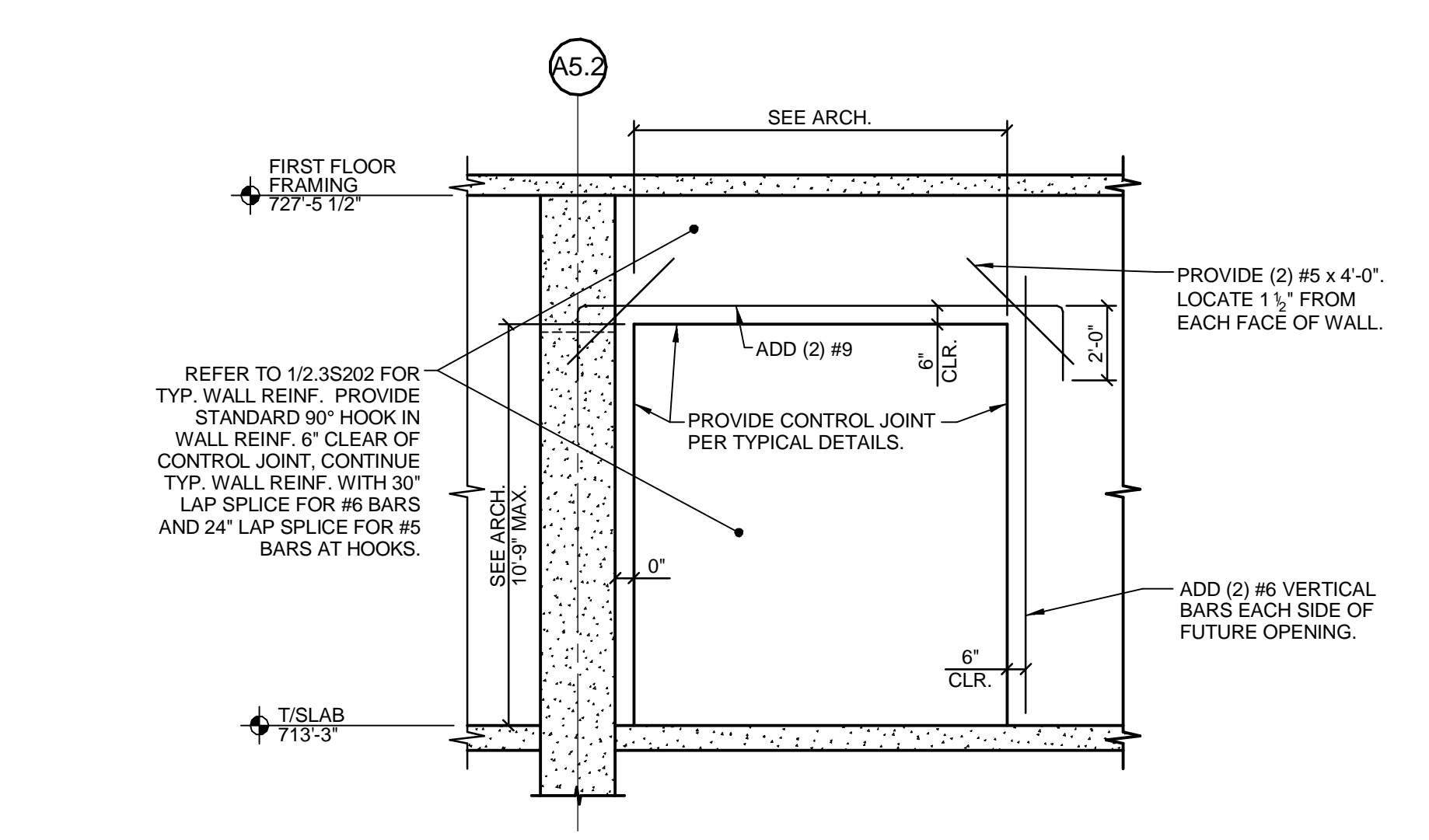
21 DETAIL

2.3S302 3/4" = 1'-0"



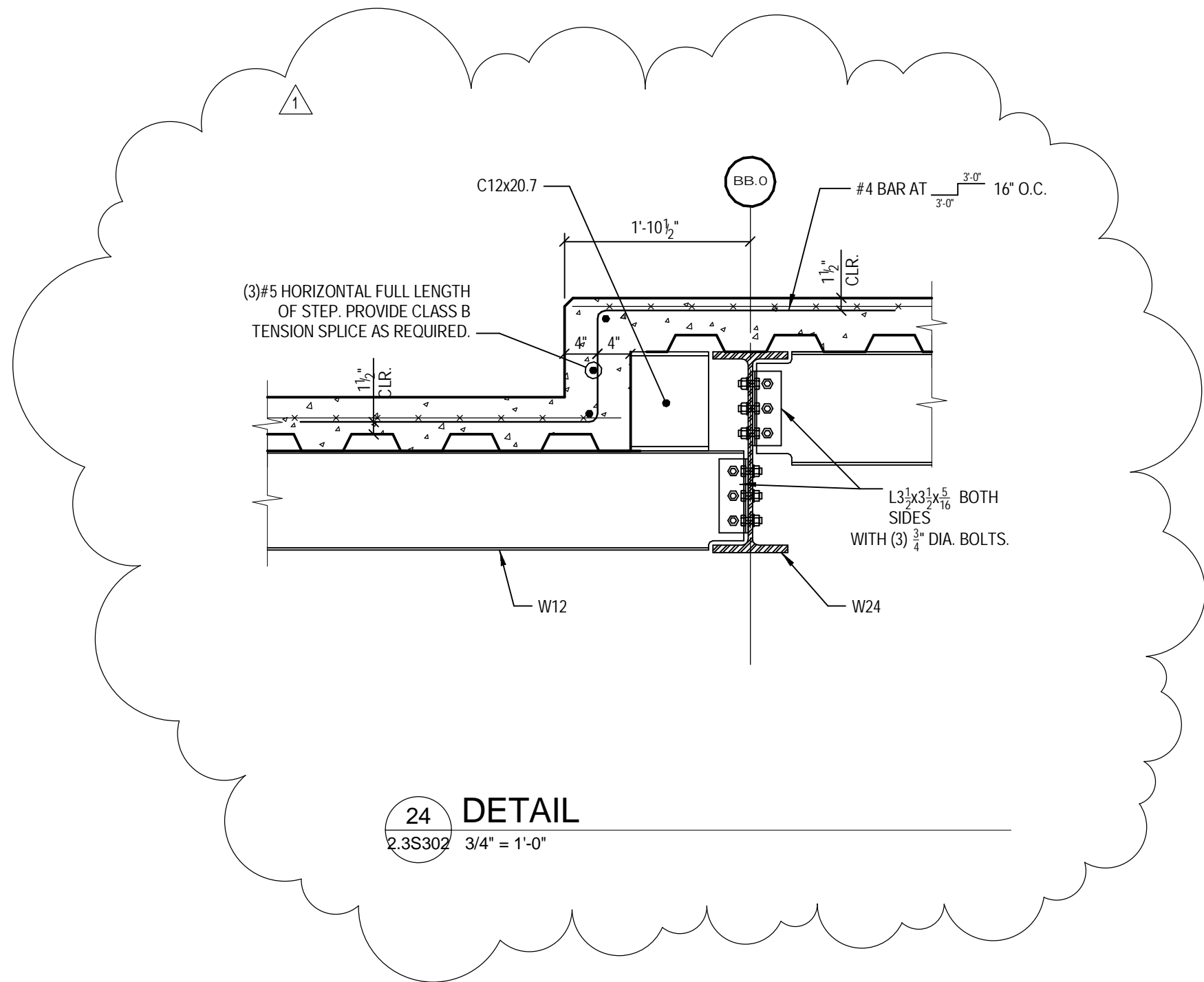
22 DETAIL

2.3S302 3/4" = 1'-0"



23 ELEVATION

2.3S302 1/4" = 1'-0"



24 DETAIL

2.3S302 3/4" = 1'-0"

Revisions			
1	ADDENDUM #1	09.04.12	
	BID DOCUMENTS	01.30.12	
		Date	

CONSULTANTS:

ARCHITECT/ENGINEERS:

CHAMPLIN ARCHITECTURE

thinkchamplin.com

424 East Fourth Street
Cincinnati, OH 45202
T 513.241.4474 F 513.241.0081

THINK CREATE REALIZE

Drawing Title

FRAMING DETAILS

PHASE 3

Approved: Project Director

Project Title

RELOCATE SHORT TERM REHAB COMMUNITY LIVING CENTER

Location

Enter address here

Date

9/4/12

Checked

STE

Drawn

VLB

Project No.

VA Project No. 539-324
THP Project No. 08260.XX

Building Number

2

Drawing Number

2.3S302

Office of Construction and Facilities Management

Department of Veterans Affairs