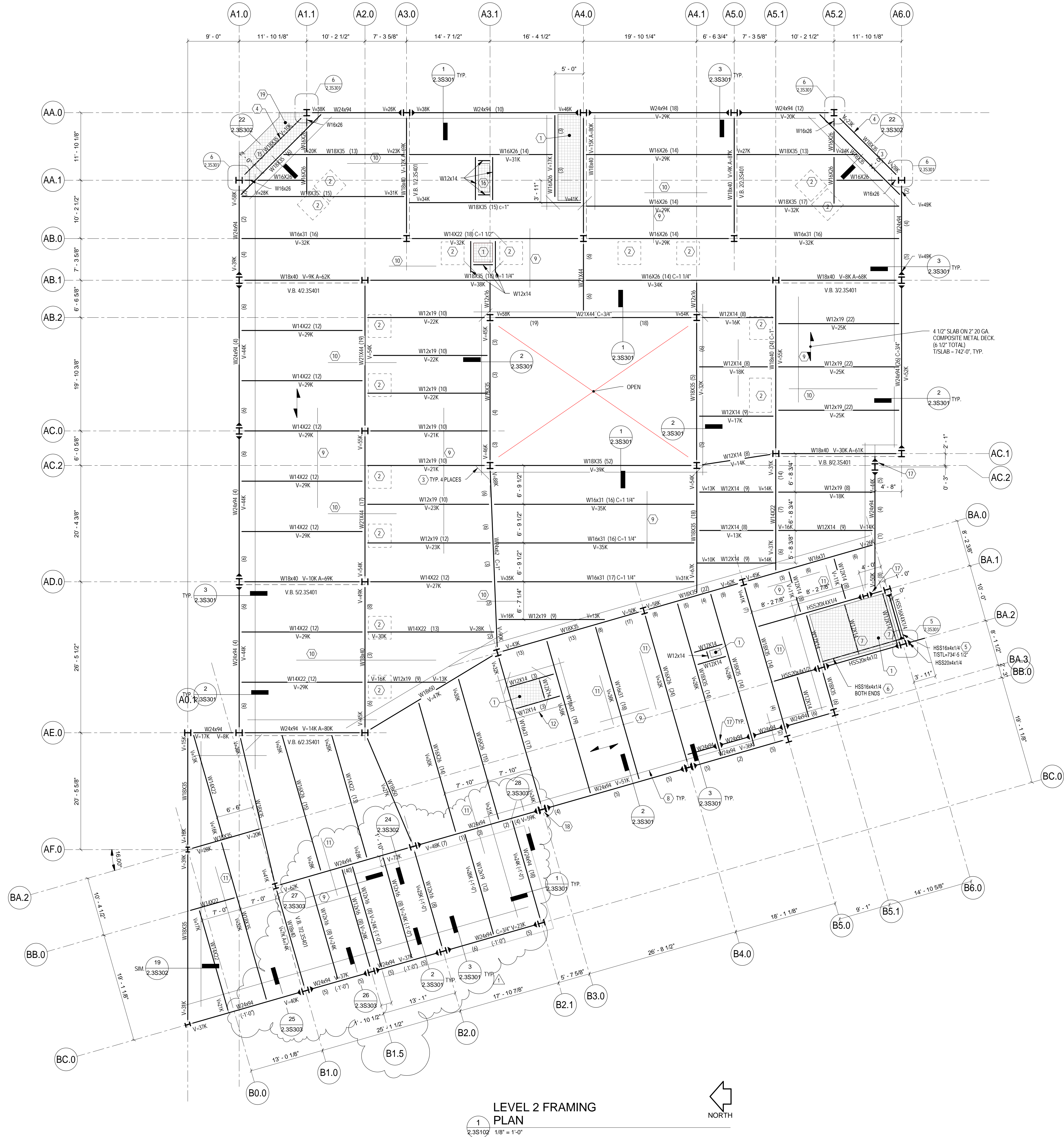


three inches = one foot  
one and one-half inches = one foot  
one inch = one foot  
three-quarters inch = one foot  
one-half inch = one foot  
three-eighths inch = one foot  
one-quarter inch = one foot  
one-eighth inch = one foot



- DRAWING NOTES:**
- REFER TO 2.3S000 SERIES DRAWINGS FOR GENERAL NOTES AND TYPICAL DETAILS.
  - REFER TO 2.3S300 SERIES DRAWINGS FOR FRAMING DETAILS.
  - REFER TO 2.3S402 FOR STEEL COLUMN SCHEDULE.
  - REFER TO 2.3S400 SERIES DRAWINGS FOR VERTICAL BRACING ELEVATIONS AND DETAILS.
- KEY NOTES:**
- SEE ARCH FOR EXTENT OF FUTURE SLAB OPENING. NO CONCRETE ON DECK IN THIS AREA.
  - METAL DECK SHALL BE PROTECTED WITH SPRAY FIBER FIRE RESISTIVE MATERIALS TO ACHIEVE 2 HOUR FIRE RATING. REFER TO ARCH PER LOCATION OF DEPRESSION.
  - SEE TYPICAL BARS AT SLAB CORNER 2.3S001.
  - SEE ARCH FOR DECK EDGE. DECK TO SPAN PERPENDICULAR TO W18.
  - PROVIDE TORSIONAL RESTRAINT AT HSS MEMBER. SEE TYPICAL DETAIL 2.3S003.
  - BEAM TO BEAM CONNECTION SHALL BE TWO SIDED. BOLTED-WELDED CLIP ANGLE CONNECTION. SUPPORT BEAM TO BE BOLTED.
  - WF TO HSS CONNECTION SHALL BE TWO SIDED. BOLTED-WELDED CLIP ANGLE CONNECTION WITH CLIP ANGLES WELDED TO HSS MEMBER.
  - PERIPHERAL REINFORCEMENT (Ø) #8 BARS AT 3 1/2" SPACING. SEE TYPICAL LONGITUDINAL / TRANSVERSE / PERIPHERAL REINFORCEMENT DETAIL 16/2.3S302. HOOK PERIPHERAL REINFORCING TO INTERSECTING PERIPHERAL REINFORCEMENT AT ENDS SIMILAR TO DETAIL 16/2.3S302.
  - LONGITUDINAL REINFORCEMENT. #5 AT 13" SPACING. SEE DETAILS 16, 17, 18/2.3S302.
  - TRANSVERSE REINFORCEMENT. #5 AT 10" SPACING. SEE DETAILS 16, 17, 18/2.3S302.
  - TRANSVERSE REINFORCEMENT. #5 AT 13" SPACING. SEE DETAILS 16, 17, 18/2.3S302.
  - PERIPHERAL REINFORCEMENT. (Ø) #5 BARS AT 6" SPACING. SEE DETAIL 16/2.3S302. HOOK PERIPHERAL REINFORCEMENT TO INTERSECTING PERIPHERAL REINFORCEMENT AT ENDS SIMILAR TO DETAIL 16/2.3S302.
  - LONGITUDINAL REINFORCEMENT. #5 AT 6" SPACING SEE DETAILS 16, 17, 18/2.3S302.
  - TRANSVERSE REINFORCEMENT. #5 AT 9" SPACING. SEE DETAILS 16, 17, 18/2.3S302.
  - BEAM TO COLUMN CONNECTION SHALL BE BOLTED SHEAR TAB.
  - COORDINATE LOCATION OF FRAMING WITH HVAC PIPE LAYOUT. NO CONCRETE ON DECK IN THIS AREA.
  - MOMENT CONNECTION TO DEVELOP FULL CAPACITY OF BEAM.
  - SEE DETAIL 15/2.3S302.
  - SEE ARCH FOR EXTENT OF FUTURE SLAB OPENING.

- LEGEND:**
- (Ø) INDICATES DECK BEARING (OR T/STEEL) ELEVATION RELATIVE TO DATUM ELEVATION.
  - /— INDICATES SHEAR SPLICE, TYPICAL U.N.O. REFER TO TYPICAL DETAIL ON 2.3S003.

Revisions	Date
1	09.04.12
ADDENDUM #1	01.30.12
BID DOCUMENTS	01.30.12
100% REVIEW	01.10.12
DESIGN DEVELOPMENT	11.15.11
SCHEMATIC DESIGN	09.17.11

CONSULTANTS:

**TH** THP Limited, Inc.  
100 East Eighth Street  
Cincinnati, Ohio 45202  
Phone: 513.241.3222  
Fax: 513.241.2961  
www.thpltd.com

ARCHITECT/ENGINEERS:

**CHAMPLIN** ARCHITECTURE  
thinkchamplin.com  
424 East Fourth Street  
Cincinnati, OH 45202  
T 513.241.4474 F 513.241.0081  
THINK CREATE REALIZE

Drawing Title

**LEVEL 2 FRAMING PLAN**

PHASE 3

Approved: Project Director

Project Title

**RELOCATE SHORT TERM REHAB COMMUNITY LIVING CENTER**

Location Enter address here

Date 9/4/12

Checked STE

Drawn VLB

Project No. 539-324  
VA Project No. 08260.XX  
THP Project No.

Building Number 2

Drawing Number 2.3S102

Office of Construction and Facilities Management

Department of Veterans Affairs