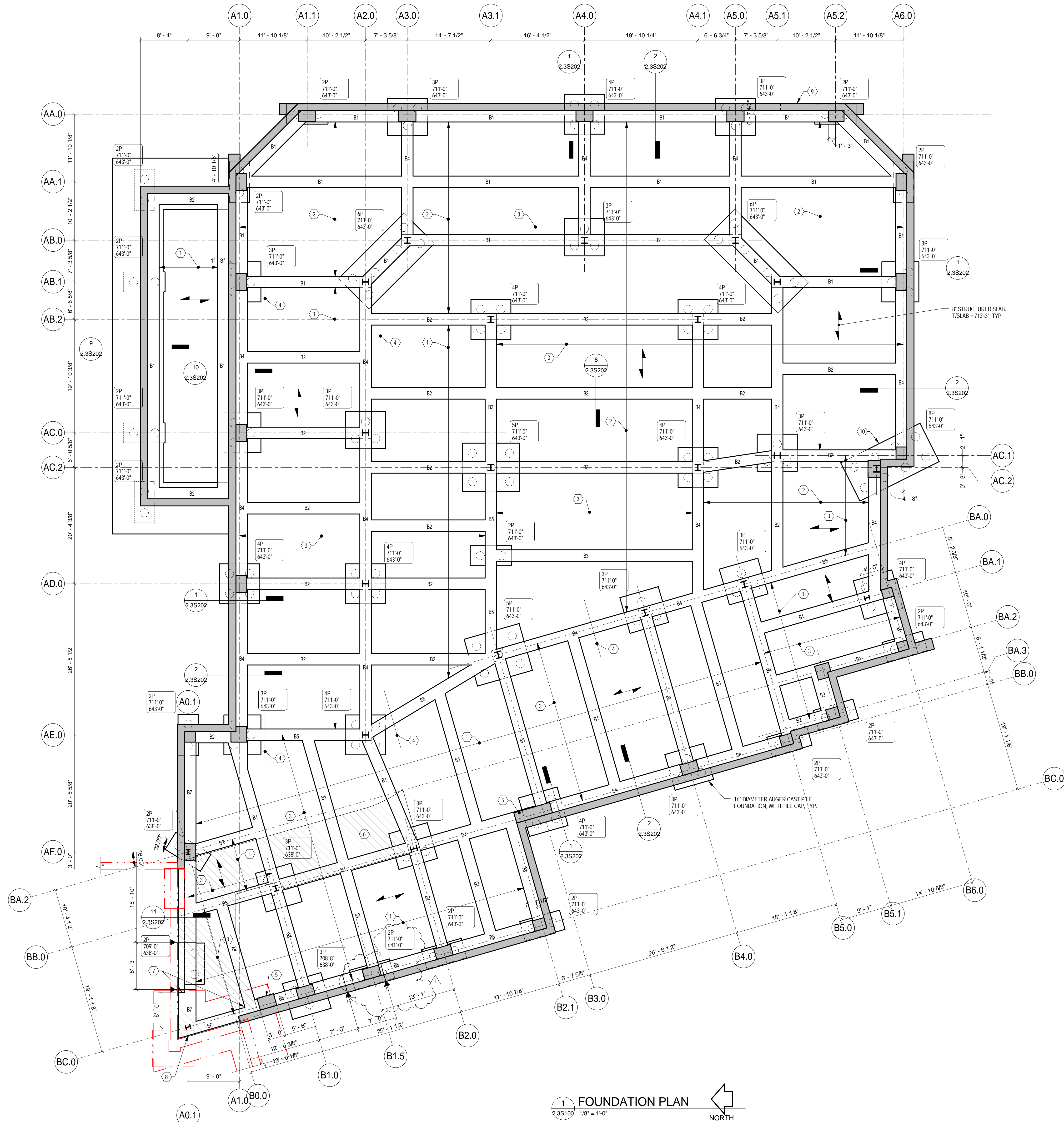


1
2
3
4
5
6
7
8
9

A
B
C
D
E
F

three inches = one foot
one and one-half inches = one foot
one inch = one foot
three-quarters inch = one foot
one-half inch = one foot
three-eighths inch = one foot
one-quarter inch = one foot
one-eighth inch = one foot



- DRAWING NOTES:**
- SEE GENERAL NOTES 2.3S001.
 - CENTER TOP BARS IN SLAB OVER GRADE BEAMS U.N.O.
- KEY NOTES:**
- #4 AT 10" BOTTOM, AND #4x8'-6" AT 12" TOP.
 - #6 AT 9" BOTTOM, AND #6x10'-6" AT 12" TOP.
 - #4 AT 12". PLACE BARS DIRECTLY ON TOP OF BOTTOM REINFORCEMENT.
 - #4x10'-6" AT 12" TOP.
 - SEE SECTION 3/2.3S202 AND 5/2.3S202 FOR PIER ARRANGEMENT AND REINFORCING.
 - CONCRETE INFILL FOR RAMP. SEE ARCH DRAWINGS FOR EXTENTS.
 - SEE WALL OFFSET DETAIL ON 2.3S002 FOR GRADE BEAM OFFSET REINFORCEMENT.
 - DRILL AND EPOXY (3)#6 DOWELS 18" INTO EXISTING PILE CAP. SEE DETAIL 23/2.3S302.
 - FUTURE OPENING FOR TUNNEL. SEE DETAIL 23/2.3S302.
 - SIMILAR TO 6P PILE CAP DETAIL WITH 10'-4" COLUMN TO COLUMN DIMENSION REDUCED TO 5'-2 7/8". PILE SPACE SIMILAR TO 4P DETAIL.

LEGEND:

INDICATES GRADE BEAM STEP. SEE TYPICAL DETAIL.

INDICATES WALL STEP. SEE DETAIL 2.3S001.

PILE CAP TYP. SEE TYPICAL DETAILS ON 2.3S002.

TOP OF PILE CAP ELEVATION.

ESTIMATED BOTTOM OF DRILLED PILE ELEVATION.

GRADE BEAM SCHEDULE				
MARK	SIZE	TOP REINFORCING	BOTTOM REINFORCING	NOTES
B1	24"Wx27"D	-	(8) #8	(12) #4 L.J. AT 12" EACH END
B2	24"Wx27"D	-	(5) #8	(9) #4 L.J. AT 12" EACH END
B3	24"Wx27"D	-	(14) #8	(15) #4 L.J. AT 12" EACH END
B4	24"Wx27"D	-	(14) #8	#4 L.J. AT 12"
B5	24"Wx27"D	-	(8) #8	#4 L.J. AT 12"
B6	24"WVARIES	-	(14) #8	#4 L.J. AT 12" FORM SIDE WALL
B7	24"WVARIES	(18) #10	(8) #8	#4 L.J. AT 12" FORM SIDE WALL

1 FOUNDATION PLAN
2.3S100 1/8" = 1'-0"

Revisions	Date
1	09.04.12
BID DOCUMENTS	01.30.12
100% REVIEW	01.10.12
DESIGN DEVELOPMENT	11.15.11
SCHEMATIC DESIGN	9.17.11

CONSULTANTS:

THP THP Limited, Inc.
100 East Eighth Street
Cincinnati, Ohio 45202
Phone: 513.241.3222
Fax: 513.241.2961
www.thpltd.com

ARCHITECT/ENGINEERS:

CHAMPLIN ARCHITECTURE
thinkchamplin.com
424 East Fourth Street
Cincinnati, OH 45202
T 513.241.4474 F 513.241.0081
THINK CREATE REALIZE

Drawing Title

FOUNDATION PLAN

PHASE 3

Approved: Project Director

Project Title

RELOCATE SHORT TERM REHAB COMMUNITY LIVING CENTER

Location

Enter address here

Date

9/4/12

Checked

STE

Drawn

VLB

Project No.

VA Project No. 539-324
THP Project No. 08260.XX

Building Number

2

Drawing Number

2.3S100

Office of Construction and Facilities Management

Department of Veterans Affairs