

**SECTION 09 06 00  
SCHEDULE FOR FINISHES**

**PART I - GENERAL**

**1.1 DESCRIPTION**

This section contains a coordinated system in which requirements for materials specified in other sections shown are identified by abbreviated material names and finish codes in the room finish schedule or shown for other locations.

**1.2 MANUFACTURERS**

Manufacturer's trade names and numbers used herein are only to identify colors, finishes, textures and patterns. Products of other manufacturer's equivalent to colors, finishes, textures and patterns of manufacturers listed that meet requirements of technical specifications will be acceptable upon approval in writing by contracting officer for finish requirements.

**1.3 SUBMITALS**

Submit in accordance with SECTION 01 33 23, SHOP DRAWINGS, PRODUCT DATA, AND SAMPLES—provide quadruplicate samples for color approval of materials and finishes specified in this section.

**1. COLOR SLIDES-INTERIOR VIEWS:**

Room Number and Name	Item/View to be Photographed
1. Rendering: Perspective looking North/West	
2. Rendering: View of East Patio at Entry	
3. Rendering: View of Resident Living, Dining, Activity	
4. Rendering: View of Resident Living, Dining, Activity	

5. Rendering: View of Resident Living, Dining, Activity	
6. Rendering: View of Resident Bedroom	
7. Rendering: View of Resident Bedroom	







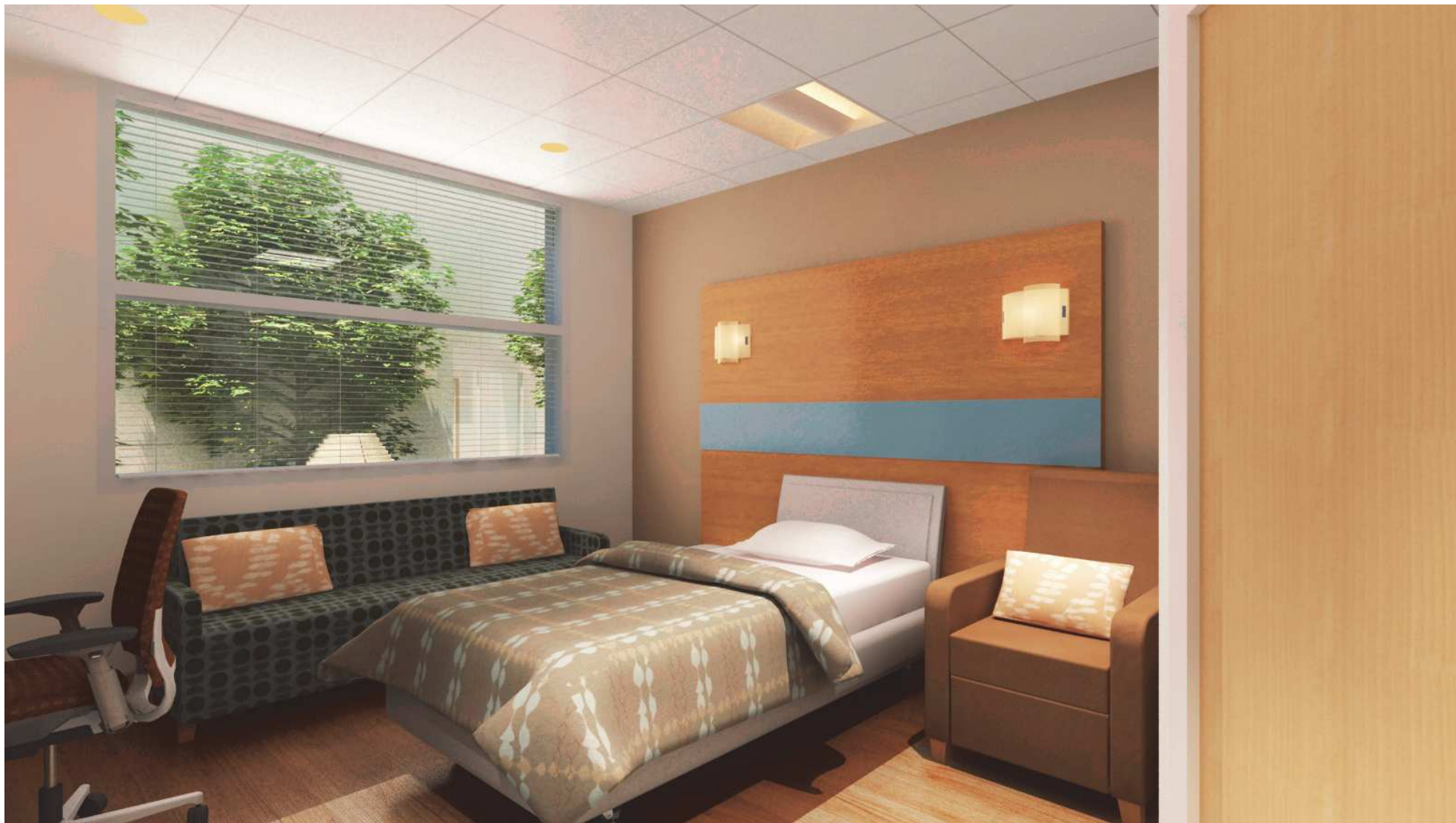
















#### 1.4 APPLICABLE PUBLICATIONS

A. Publications listed below form a part of this specification to the extent referenced. Publications are referenced in text by basic designation only.

B. MASTER PAINTING INSTITUTE: (MPI)

2001.....Architectural Painting Specification Manual

#### PART 2- PRODUCTS

##### 2.0 DIVISION 03 - CONCRETE

A. SECTION 03 33 00, Architectural Concrete

Material	Location	Size / Finish
Concrete Wall	Exterior stem wall / Base of Building	Sacked and painted, refer to 090600 2.5J 099100 for color
Concrete Patio	Patio slab on grade	Sacked and painted, refer to 090600 2.5J 099100 for color
Concrete Courtyard	Courtyard slab on grade	Sacked and painted, refer to 090600 2.5J 099100 for color
Concrete Fountain	Courtyard / Patio	Sacked and painted, refer to 090600 2.5J 099100 for color
Concrete ramp/stairs	Entry, south doors	Sacked and painted, refer to 090600 2.5J 099100 for color

##### 2.1 DIVISION 05 - METALS

A. SECTION 05 05 00, ADHESIVE AND MECHANICAL FASTENERS

Item:	Manufacturer:	Product:
Adhesives for use in Concrete	Hilti	HIT RE-500-SD (ICC ESR 2322)
	Simpson Strong-Tie	SET-XP (ICC ESR 2508)



Adhesives for use in Masonry	Hilti	HY 150 MAX (ICC ESR 1967)
	Simpson Strong-Tie	Epoxy-Tie SET (ICC ESR 1772)
Mechanical Wedge Anchors in Concrete	Hilti	Kwik Bolt TZ (KB-TZ) (ICC ESR 1917)
	Simpson Strong-Tie	Strong-Bolt (ICC ESR 1771)
Mechanical Wedge Anchors in Masonry	Hilti	Kwik Bolt 3 (KB-3) (ICC ESR 1385)
	Simpson Strong-Tie	Wedge-All (ICC ESR 1396)

B. SECTION 05 36 00, COMPOSITE METAL DECKING

Manufacturer:
Verco Manufacturing, Co.
ASC Profiles
Deck West, Co.

Note: Deck and shear resistant angle manufacturer to be the same.

C. SECTION 05 40 00, COLD-FORMED METAL FRAMING

METAL FRAMING, CONNECTORS, AND ACCESSORIES:
Manufacturer:
Dietrich Metal Framing
The Steel Network, Inc.
Cemco
Simpson Strong-Tie

SELF-DRILLING, SELF-TAPPING SCREWS, BOLTS, NUTS AND WASHERS:
--

COMMUNITY LIVING CENTER (CLC)  
 VA SIERRA NEVADA HEALTH CARE SYSTEM  
 RBB PROJECT #1017200

VA PROJECT #654-317  
 VA CONTRACT #VA 261-P-0933

Manufacturer:	Product:
Grabber Construction Products	Grabber
ITW Buildex	TEKS
Compass International	DARTS

D. SECTION 05 52 13, PIPE AND TUBE RAILINGS, SECTION 05 73 16, DECORATIVE METAL RAILING

LEGEND	Location	Manufacturer:	Size / Finish
HR-01	Exterior Ramps		1 ½" dia. Satin, Brushed, Stainless Steel
	Stair Handrails		1 ½" dia. Satin, Brushed, Stainless Steel
	Stair Railing top and bottom		Thickened steel bar per dimensions on details, sheet AE820; appearance grade finish
GR-01	Stair Railing	Diamond Perforated Metal Co.	Model No. 625-875-SQ2 5/8" squares on 7/8" centers, straight pattern Finish: Perforated Panel - Brushed stainless steel appearance grade 11 gauge

**2.3 DIVISION 07 - THERMAL AND MOISTURE PROTECTION**

A. SECTION 07 13 52, MODIFIED BITUMINOUS SHEET WATERPOOFING; 07 46 16 COLD FLUID APPLIED WATERPROOFING



Type	Location	Manufacturer	Mfg. Product Name/No.
	Vertical and horizontal at face of wall at patio w/protection course	W.R. GRACE	Bituminous W.P. Membrane
	Above slab at Patio below geocomposite-drainage sheet below self-leveling pavers	W.R. GRACE	Procur
	Below slab and footings	W.R. GRACE	Preprufe 300r

B. SECTION 07 42 13, METAL WALL PANELS

Type	Shape	Ext. Finish	Int. Finish	Manufacturer	Mfg. Color Name/No.
MP-1 Insulated Metal Panels - TYPE 1	Per Drawings	3-COAT FLUROPOLYMER; PROFILE: FLAT TEXTURE: SMOOTH	3-COAT FLUROPOLYMER;	KINGSPAN	DURANAR BEIGE UC54137
MP-2 Insulated Metal Panels - TYPE 2	Per Drawings	3-COAT FLUROPOLYMER; PROFILE: STRIATED, HORIZONTAL TEXTURE: SMOOTH	3-COAT FLUROPOLYMER;	KINGSPAN	DURANAR ROSEWOOD UC56785
MP-3 Insulated Metal Panels - TYPE 3	Per Drawings	3-COAT FLUROPOLYMER; PROFILE: STRIATED, HORIZONTAL TEXTURE: SMOOTH	3-COAT FLUROPOLYMER;	KINGSPAN	DURANAR BEIGE UC54137
MP-4	Per Drawings	3-COAT	3-COAT	KINGSPAN	DURANAR SILVER UC51131XL

COMMUNITY LIVING CENTER (CLC)  
 VA SIERRA NEVADA HEALTH CARE SYSTEM  
 RBB PROJECT #1017200

VA PROJECT #654-317  
 VA CONTRACT #VA 261-P-0933

Insulated Metal Panels - TYPE 4		FLUROPOLYMER; PROFILE: FLAT TEXTURE: SMOOTH	FLUROPOLYMER;		
---------------------------------	--	---	---------------	--	--

C. SECTION 07 54 19, POLYVINYL CHLORIDE PVC ROOFING

Coating Material	Color	Manufacturer	Mfg. Color Name/No.
Single ply PVC roofing membrane	WITE	Sarnafil	

D. SECTION 07 57 13, SPRAYED POLYURETHANE FOAM ROOFING

Coating Material	Color	Manufacturer	Mfg. Color Name/No.
Silicone Rubber Elastomeric Protective Coating 2-coat	Light tone - white/light gray		
Ceramic Granules			

E. SECTION 07 60 00, FLASHING AND SHEET METAL

Item	Material	Finish
Copings	Powder coated steel	Match Insulated Metal Panels
Roof Insulated Expansion Joint Covers	Construction Specialties	Construction Specialties Model per drawings
Overflow scupper	BOD Model: Zurn Z199	Nickel Bronze Finish

F. SECTION 07 71 00 / 07 72 00, ROOF SPECIALITIES AND ACCESSORIES



COMMUNITY LIVING CENTER (CLC)  
 VA SIERRA NEVADA HEALTH CARE SYSTEM  
 RBB PROJECT #1017200

VA PROJECT #654-317  
 VA CONTRACT #VA 261-P-0933

Item	Material	Finish	Manufacturer	Manufacturer/Color Name/Number.
Roof Ladder	Steel	Galvanized		
Equipment Support	Galv. Steel	Galvanized		
Copings	Steel	Powdercoated		MATCH METAL PANEL FINISH/COLOR
Gravel Stops and Fascia System	Galv steel	Galvanized		
Fascia Systems	Galv steel	Galvanized		
Roof Expansion Joint Covers	Extruded Aluminum	Mill	Construction Specialties	SRJ/SRJW

G. SECTION 07 87 00, SMOKE CONTAINMENT SYSTEM

Item	Location	Manufacturer	Mfg. Color Name/No.
Cross Corridor Accordion Door	Cross corridor smoke compartments	Won-Door FireGuard	Fire Guard FG-90 Slim Drive Cross Corridor Accordion Door 1 1/2 hour rating

H. SECTION 07 92 00, JOINT SEALANTS

Location	Color	Manufacturer	Manufacturer Color
Metal Panel joints	Custom match metal panels		
Curtain wall joints	Custom match metal panels		

I. SECTION 07 95 13, EXPANSION JOINT COVER ASSEMBLIES

Location	Material	Finish	Manufacturer	Mfg. Color Name/No.
Floor Component Cover Plate Frame Casket or Sealant (interior only)			Construction Specialties	Construction Specialties Model SJPF / color to match adj finish
Wall Component Cover Plate Frame Casket or Sealant (interior only)			Construction Specialties	Construction Specialties Model SFW / color to match adj finish
Ceiling Component Cover Plate, Gasket or Sealant (interior only)	Gyp Board Ceiling		Construction Specialties	Construction Specialties Model SFC/ color to match adj finish
Ceiling Component Cover Plate, Gasket or Sealant (interior only)	Acoustical Tile Ceiling		Construction Specialties	Construction Specialties Model fcf/ color to match adj finish
Exterior Wall Thermoplastic Joint			Construction Specialties	Construction Specialties Model SC / color to match metal panel

## 2.4 DIVISION 08 - OPENINGS

### A. SECTION 08 11 13, HOLLOW METAL DOORS AND FRAMES

Paint both sides of door and frames same color including ferrous metal louvers, and hardware attached to door	
Component	Color of Paint Type and Gloss
Door	Paint to match adjacent wall
Frame	Paint to match adjacent wall
Window frame	N/A

### B. SECTION 08 14 00, WOOD DOORS

Component	Finish/Color
Doors	FSC Certified Quartersawn sliced white maple wood veneer with clear satin finish
Frames	Hollow Metal Door Frames painted to match adjacent wall paint color

### C. SECTION 08 31 13, ACCESS DOORS AND FRAMES

Material	Finish/Color
Steel	Paint to match adjacent finish

### C. SECTION 08 44 13, ALUMINUM-FRAMED ENTRANCES AND CURTAINWALLS

Material	Finish	Manufacturer / Model	Manufacturer Color
----------	--------	----------------------	--------------------



COMMUNITY LIVING CENTER (CLC)  
 VA SIERRA NEVADA HEALTH CARE SYSTEM  
 RBB PROJECT #1017200

VA PROJECT #654-317  
 VA CONTRACT #VA 261-P-0933

			Name/No.
Exterior Aluminum Stile Automatic Storefront Doors	3-COAT FLUROPOLYMER	Kawneer 350HW MED STILE	DURANAR SILVER UC51131XL
Interior Aluminum Mullion system	3-COAT FLUROPOLYMER	Kawneer 450 System - center glazed	DURANAR SILVER UC51131XL
Exterior Aluminum Storefront Doors	3-COAT FLUROPOLYMER	Kawneer 1600 System	DURANAR SILVER UC51131XL
Exterior Aluminum Storefront w/integral blinds at punched openings	3-COAT FLUROPOLYMER	Kawneer 1600 System	DURANAR SILVER UC51131XL
Exterior Aluminum Sunshades	3-COAT FLUROPOLYMER	Kawneer Custom	DURANAR SILVER UC51131XL
Bend 1/8", Preformed exterior aluminum filler panel at east wall.	3-COAT FLUROPOLYMER	Kawneer Custom	DURANAR SILVER UC51131XL

D. SECTION 08 71 00, BUILDERS HARDWARE

Item	Material	Finish
Hinges	Steel and stainless steel	652 & 630
Door Closers	Cast Iron	652
Floor Closers	Steel	626
Floor Pivot Sets	Bronze	626
Closer/ Holder	Cast Iron	652
Floor Stops	Wrought steel	626
Door Holders	Steel	626
Lock/ Latches	Bronze	626

Key Cabinet	Steel	
Armor Plates	Stainless steel	630
Kick Mop Plates	Stainless steel	630
Door Edging	Stainless steel	630
Exit Device	Aluminum	628
Flush Bolts	Steel	626
Door Pulls	Stainless steel	630
Push Plates	Stainless steel	630
Combination Push Pull Plate	Stainless steel	630
Coordinators	Steel	600
Light Proof Seals	Aluminum with silicone	AL
Weather Strip	Silicone	
Threshold	Aluminum	AL

E. SECTION 08 80 00, GLAZING

	Glazing Type	Manufacturer	Mfg. Color Name/No.
	GL-1	Not used	Vision Glass - 1/4" Clear
3	GL-2	Guardian SunGuard	Vision Glass - 1/4" Clear, Tempered
3	GL-3 At display case	Guardian SunGuard	Vision Glass - 5/16" Clear, Tempered
	GL-4	Not used	Full Ht. Glass, 1/2" Clear Tempered
	GL-5	Fire Lite	Vision panel - FireLite Plus Premium Grade, Clear - 20,60 Min Fire Rating
	GL-6	Fire Lite	Vision panel - FireLite Plus Premium

3			Grade, Clear - 90 Min Fire Rating -
	GL-7	Guardian SunGuard	1/2" Laminated Acid Etched Glass - composed of 1/4" clear / .060 PVB interlayer clear / 1/4" SunGuard Satin Deco <del>ECO</del> Glass/ Acid Etched on #4 surface
3	GL-8	Guardian SunGuard	<u>1/2" Laminated glass with embedded translucent ceramic silk screen paint lines - composed of 1/4" clear / .060 PVB interlayer, clear / 1/4" clear / silk screen translucent simulated sandblast ceramic paint lines (50% surface coverage) on surface #3 where horizontally arranged 1/2" wide lines and 1/2" wide spaces are used (line appearance to resemble SunGuard SatinDeco acid etch glass found in GL-7)</u> <del>1/2" Laminated glass with translucent frit - composed of 1/4" clear / .060 PVB interlayer, clear / 1/4" clear / silk screen ceramic frit 50% translucent dot pattern to match acid etch on #3 surface</del>
	<u>GL-9</u>	<u>Guardian SunGuard</u>	<u>1/2" Laminated glass - composed of 1/4" clear / .060 PVB interlayer, clear / 1/4" clear</u>
	VG-1	Guardian SunGuard	1" Insulated panel - composed of 1/4" Guardian Sun Guard Light Blue 63 on Clear Low-E #2 / 1/2" air fill/ 1/4" laminated clear glass / Nominal 6mm total thickness
	VG-2	Guardian SunGuard	1" Insulated panel - composed of 1/4" Guardian Sun Guard Light Blue



COMMUNITY LIVING CENTER (CLC)  
 VA SIERRA NEVADA HEALTH CARE SYSTEM  
 RBB PROJECT #1017200

VA PROJECT #654-317  
 VA CONTRACT #VA 261-P-0933

		63 on Clear Low-E #2 / 1/2" air fill/ 1/4" laminated clear glass / Nominal 6mm total thickness/ with 1" integral blind and 1/4" tempered glass inboard
VG-3	Guardian SunGuard	1" Insulated panel - composed of 1/4" Guardian Sun Guard Light Blue 63 on Clear Low-E #2 / 1/2" air fill/ 1/4" laminated clear glass / Nominal 6mm total thickness
SG-1	Guardian SunGuard	1" Insulated panel - composed of 1/4" Guardian Sun Guard Light Blue 63 on Clear Low-E #2 / 1/2" air fill / 1/4" laminated clear glass / Solar Gray Ceramic Frit on #6 surface
FG-1	Guardian SunGuard	1" Insulated panel - composed of 1/4" Guardian Sun Guard Light Blue 63 on Clear Low-E #2 / 1/2" air fill / 1/4" Laminated clear glass with silkscreen ceramic frit 50% warm gray dot pattern on #3 surface

## 2.5 DIVISION 09 - FINISHES

### A. SECTION 09 30 13, CERAMIC TILING

Code	Style	Pattern	Manufacturer	Mfg. Color Name/No.
MT-01	Egyptian Glass	Mosaic	Daltile Contact: Donna Apcar (818) 303-6911	Color: Oasis EG16 Size: 1"x 1" Field Tile Thickness: 1/4"

COMMUNITY LIVING CENTER (CLC)  
 VA SIERRA NEVADA HEALTH CARE SYSTEM  
 RBB PROJECT #1017200

VA PROJECT #654-317  
 VA CONTRACT #VA 261-P-0933

				Joint: 1/8" Mounting: Paperface; buttermount to make flush with adjacent tiles
Grout			Laticrete Contact: Eddie Obymako (203) 751-2619	Type: Epoxy Grout Spectra Lock Pro Premium Color: 03 Silk w/MT-01

B. SECTION 09 30 13, CERAMIC TILING

Finish Code	Manufacturer	Mfg. Color Name/No
PT-01	Daltile Contact: Donna Apcar (818) 303-6911	Style: St. Germain Size: 6H" x 24W" Joint: 1/8" Color: Chenile SE62
PT-02	Daltile Contact: Donna Apcar (818) 303-6911	Style: St. Germain Size: 3H" x 12W", Bullnose Joint: 1/8" Color: Chenile SE62
PT-03	Daltile Contact: Donna Apcar (818) 303-6911	Style: St. Germain Cut to Size: 3H" x 24W" Joint: 1/8" Color: Chocolat SE65
PTB-01	Daltile Contact: Donna Apcar (818) 303-6911	Style: St. Germain Size: 6H" x 12W" Cove Base PTB-01 Joint: 1/8"

COMMUNITY LIVING CENTER (CLC)  
VA SIERRA NEVADA HEALTH CARE SYSTEM  
RBB PROJECT #1017200

VA PROJECT #654-317  
VA CONTRACT #VA 261-P-0933

		Color: Chenile SE62PTB-01
PTB-02	Daltile Contact: Donna Apcar (818) 303-6911	Style: St. Germain Size: 1" x 6", Cove Base Outcorner Joint: 1/8" Color: Chenile SE62 Note: To be used where applicable
Grout	Laticrete Contact: Eddie Obymako (203) 751-2619	Type: Epoxy Grout Spectra Lock Pro Premium Color: 56 Desert Khaki w/PT-01, PT-02, PT-03, PTB-01, and PTB-02
Transition to 1/8" Resilient Flooring	See Detail 12/AE320	Solid Surface to match Color: Corian Raffia, Satin/Matte

C. SECTION 09 51 13, ACOUSTICAL CEILINGS

Finish Code	Component	Color Pattern	Manufacturer	Mfg Name/No.
	Exposed Suspension System	- - -	Armstrong Contact: Dave Hovekamp (310) 294-0493	Prelude XL 15/16"
AT-01	Type III	White	Armstrong Contact: Dave Hovekamp (310) 294-0493	Cirrus 581, 15/16" Angled Tegular 2' X 4' x 7/8"
AT-02	Type III	White	Armstrong Contact: Dave Hovekamp	Cirrus 572, 15/16" Angled Tegular



			(310) 294-0493	2' X 2' x 7/8"
AT-03	Type III	White	Armstrong Contact: Dave Hovekamp (310) 294-0493	Clean Room Ultima 1937, 15/16" Beveled Tegular 2' x 2' x 3/4"

D. SECTION 09 54 29, WOOD PANEL CEILINGS

Finish Code	Component	Color Pattern	Manufacturer	Mfg Name/No.
	Exposed Suspension System	- - -	Armstrong	Prelude XL 15/16"
LWC-01	Wood Plank	Woodworks Channeled Ceiling Plank, Maple	Armstrong Contact: Dave Hovekamp (310) 294-0493	Natural Variations 5901CW7, with 1" fiberglass backer Size: 6" x 10' x 3/4"

E. SECTION 09 65 13, RESILIENT BASE STAIR TREADS AND ACCESSORIES

Finish Code	Item	Size	Manufacturer	Mfg Name/No.
RB-01	Rubber Base (RB) w/VT-01, VT-02	6" High w/Reveal	Johnsonite Contact: Ellen Wren (323)876-3801	Style: MW-Masquerade Natural Maple Custom-F6
RB-02	Rubber Base (RB) w/CPT-01, CPT-02	6" High w/Reveal	Johnsonite Contact: Ellen Wren (323)876-3801	Style: MW-XX-F, Millwork Wallbase Reveal Color: 150 Wetlands
RB-03	Rubber Base (RB) w/VCT	6" High w/Reveal	Johnsonite Contact: Ellen Wren	Style: RWDC-140-6", Recess Wallbase w/Toe

COMMUNITY LIVING CENTER (CLC)  
VA SIERRA NEVADA HEALTH CARE SYSTEM  
RBB PROJECT #1017200

VA PROJECT #654-317  
VA CONTRACT #VA 261-P-0933

			(323)876-3801	Color: 281 Grizzly
RB-04	Rubber Base (RB) w/RT	6" High w/Reveal	Johnsonite Contact: Ellen Wren (323)876-3801	Style: RWDC-140-6" Recess Wallbase w/Toe Color: 49 Beige
RT-01	Stair Landings Rubber	V.I.F.	Johnsonite Contact: Ellen Wren (323)876-3801	Style: Mesto Configurations - Tile Size: 12"x24"x 1/8" Color: Mesto Whirlwind- Equal parts of 48L, 487 and 487D.
RST-01	Top Step Rubber	V.I.F.	Johnsonite Contact: Ellen Wren (323)876-3801	Style: Hammered Tread Without Riser Visually Impaired (VIHMT) Color: Mesto 487D Whirlwind; Custom Size: Field Verify Tread Depth
RST-01	Bottom Step Rubber	V.I.F.	Johnsonite Contact: Ellen Wren (323)876-3801	Style: Hammered Tread/Riser Visually Impaired(VIHTR) - Color: Mesto 487D Whirlwind; Custom Size: Field Verify Tread Depth
RST-01	Resilient Stair Risers Rubber	V.I.F. All stairs except top and bottom	Johnsonite Contact: Ellen Wren (323)876-3801	Style: Hammered Tread/Riser (HTR)- Color: Mesto 487D Whirlwind;

COMMUNITY LIVING CENTER (CLC)  
 VA SIERRA NEVADA HEALTH CARE SYSTEM  
 RBB PROJECT #1017200

VA PROJECT #654-317  
 VA CONTRACT #VA 261-P-0933

				Custom Size: Field Verify Riser Height
RST-01	Visually Impaired Strip	2" Wide	Johnsonite Contact: Ellen Wren (323)876-3801	Insert Color: Black
RST-01	Stringer	V.I.F.	Johnsonite Contact: Ellen Wren (323)876-3801	Color: 49 Beige WB

F. SECTION 09 65 16, VINYL SHEET FLOORING, HEAT WELDED SEAMS (WSF)

Finish Code	Pattern name	Manufacturer	Mfg. Color Name/No.
WSF-01	Rejuvenations Timberline	Armstrong Contact: Ron Rodriguez (323)333-5178	Color: Maple 37351, Knock on Wood
SCB-01	Rejuvenations Timberline	Armstrong Contact: Ron Rodriguez (323)333-5178	Color: Maple 37351, Knock on Wood Height: 6"

G. SECTION 09 65 16, WELDING RODS (WR)

Finish code	Manufacturer	Mfg. Color Name/No.
WR-01	Armstrong Contact: Ron Rodriguez (323)333-5178	To match WSF-01

COMMUNITY LIVING CENTER (CLC)  
 VA SIERRA NEVADA HEALTH CARE SYSTEM  
 RBB PROJECT #1017200

VA PROJECT #654-317  
 VA CONTRACT #VA 261-P-0933

H. SECTION 09 65 19, RESILIENT TILE FLOORING

Finish Code	Size	Material/Component	Manufacturer	Mfg Name/No.
VT-01	4" x 36"	VT Planks	Armstrong Contact: Ron Rodriguez (323)333-5178	Style: Natural Creations ArborArt Color: TP042 Nouveau Maple Honey Size: 4"x36" Pattern:Staggered 6"
VT-02	4" x 36"	VT Planks	Armstrong Contact: Ron Rodriguez (323)333-5178	Style: Natural Creations ArborArt Color: TP041 Nouveau Maple Light Natural Size: 4"x36" Pattern:Staggered 6"
VT-03	Not Used			
VT-04 Kitchen & pantry, Elevator	18" x 18"	VT	Armstrong Contact: Ron Rodriguez (323)333-5178	Style: Natural Creations Mystix Color: TP780 Aria Natural Size: 18"x18" Pattern:Quarter-turn
VT-05	18" x 18"	VT	Armstrong Contact: Ron Rodriguez (323)333-5178	Style: Natural Creations Mystix Field Color: Morocco Anise Size: 18"x18" TP726



VT-06	18" x 18"	VT	Armstrong Contact: Ron Rodriguez (323)333-5178	Style: Natural Creations Mystix Accent Color: Morocco Clove TP727 Size: 18"x18" Cut to size, See IN Sheets
VCT-01	12" x 12"	VCT	Armstrong Contact: Ron Rodriguez (323)333-5178	Style: Excelon Stonetex Color: 52170 Golden Bamboo Size: 18"x18"
VCT-02	12" x 12"	VCT	Armstrong Contact: Ron Rodriguez (323)333-5178	Style: Imperial Texture Standard Excelon Color: 57506 Colorado Stone 12"x12"
VCT-03	12" X 12"	VCT	Armstrong Contact: Ron Rodriguez (323)333-5178	Style: Imperial Texture Standard Excelon Color: 51885 Granny Smith Size: 12"x12"
VCT-04	12" X 12"	VCT	Armstrong Contact: Ron Rodriguez (323)333-5178	Style: Static Dissipative SDT Color: 51950 Marble Beige Size: 12"x12"

COMMUNITY LIVING CENTER (CLC)  
 VA SIERRA NEVADA HEALTH CARE SYSTEM  
 RBB PROJECT #1017200

VA PROJECT #654-317  
 VA CONTRACT #VA 261-P-0933

I. SECTION 09 68 00, CARPET MODULES (CPT)

Finish Code	Size	Pattern direction	Manufacturer	Mfg. Color Name/No.
CPT-01	Broadloom	See IN sheets 211 & 212	Bentley Prince Street Contact: Deborah Palacios (213)505-3825	Style: Modern Block Color: Sandstone
CPT-01 Transition to 1/8" Resilient Flooring (Public Areas)			Seam seal all edges of carpet	- - -
CPT-02	Broadloom	See IN sheets 211 & 212	Shaw Contact: Marsha Newton (310)570-9232	Style: Glow Color: Creme de la Creme
CPT-02 Transition to Corridor	- - - -		See Door Schedule	

J. SECTION 09 77 00, SPECIAL WALL SURFACING

Finish Code	Manufacturer	Mfg. Color Name/No
FRP-01	Kemlite Co. Sequentia StructoGlas FRP, Class A	Color: TBD

K. SECTION 09 84 33, ACCOUSTICAL WALL PANELING

Finish Code	Manufacturer	Mfg. Color Name/No.
AWP-01	Novawall Type: 1" Thick Square Edge - Tackable w/ fabric FW-01 Core Material: 24pcf - 2pcf tackable mineral fiberboard Fire Rating: All systems to pass Class "A" for flame spread and NFPA #701 Mounting: Z-Clip Contact: Don Bigler, Modern Interiors (310)261- 4019	Fabric: FW-01 Size: 48" Widths Thickness: 1" wrapped tackable
FW-01	Carnegie Contact: Marci Colin (310)441-2289	Style: Xorel Color: Strie 6423 F122

L. SECTION 09 91 00, PAINT AND COATINGS

1. MPI Gloss and Sheen Standards

		Gloss @60	Sheen @85
Gloss Level 1	a traditional matte finish-flat	max 5 units, and	max 10 units
Gloss Level 2	a high side sheen flat-"a velvet-like" finish	max 10 units, and	10-35 units
Gloss Level 3	a traditional "egg-shell like" finish	10-25 units, and	10-35 units
Gloss Level 4	a "satin-like" finish	20-35 units, and	min. 35 units
Gloss Level 5	a traditional semi-gloss	35-70 units	
Gloss Level 6	a traditional gloss	70-85 units	

Gloss level 7 a high gloss

more than 85 units

2. Paint Code	Gloss	Manufacturer	Mfg. Color Name/No.
INTERIOR PAINT			
PTE-01	Eggshell Level 3	Benjamin Moore	Meadow Day KM3970-1, Field
PTE-02	Eggshell Level 3	Benjamin Moore	Oyster 26, Corridor
PTE-03	Eggshell Level 3	Benjamin Moore	Trail Dust HL4273-2, Accent
PTE-04	Eggshell Level 3	Benjamin Moore	Melmac Silver HL4264-2, Accent
PTE-05	Eggshell Level 3	Benjamin Moore	Windsor Toffee HL4212-2, Accent
PTE-06	Eggshell Level 3	Benjamin Moore	Bungalow Brown HL4213-3, Accent
PTE-07	Eggshell Level 3	Benjamin Moore	Tricycle Taupe HL4248-2, Accent
PTE-08	Eggshell Level 3	Benjamin Moore	Jitterbug HL4211-2, Accent
PTE-09	Eggshell Level 3	Benjamin Moore	Southwest Spirit KM4103-3, Wayfinding
PTE-10	Eggshell Level 3	Benjamin Moore	Topaz Tease KM4101-2, Signage Field Color
PTE-11	Eggshell Level 3	Benjamin Moore	Castleford KM4121-1, Signage Paper Color
Door Frames	Semi-Gloss Level 5	Benjamin Moore	Door frames to match adjacent wall paint color
EXTERIOR PAINT			
PT-1 At Concrete Stem Wall	Matte Level 2	SHERMAN WILLIAMS	SW2024 GOBI BEIGE



COMMUNITY LIVING CENTER (CLC)  
VA SIERRA NEVADA HEALTH CARE SYSTEM  
RBB PROJECT #1017200

VA PROJECT #654-317  
VA CONTRACT #VA 261-P-0933

at base of building			
PT-2 At Stucco Wall at existing building	Matte Level 2	Benjamin Moore	Match Existing
Concrete Ramp			
Concrete Retaining walls/Ramp walls/ Exit stair wall	Matte Level 2	SHERMAN WILLIAMS	SW2024 GOBI BEIGE
Concrete patio paving	Matte Level 2	SCOFIELD CO.	Custom Gray
Concrete Courtyard paving	Matte Level 2	SCOFIELD CO.	Custom Gray
Concrete Fountain	Matte Level 2	SHERMAN WILLIAMS	SW2024 GOBI BEIGE

M. SECTION 10 11 23, TACKBOARDS AND MARKERBOARDS

Finish Code	Manufacturer, Model/Style/Material	Mfg. Color Name/No.
TB-01 Quiet Room Bulletin Board	Peter Pepper Model: FB4848-5 Fabric Tackable Panel Custom Size: 48"W x 48"H Frame: #5 Slim Trim Aluminum Extrusion Frame in Matte Aluminum Fabric: COM, FW-02 Fabric Quantity: 1.5yds Contact: Steve Francis(714)241-3500	Fabric: FW-02 Carnegie Style: Xorel Color: Strie 6423 F107 Contact: Marci Colin (310)441-2289
TB-02 Concierge Back Panel	Novawall Size: 48" widths Thickness: 1/2" Classic Edge System Core: USG Micore Tackboard with White	Fabric: FW-03 Manufacturer: Carnegie Style: Xorel Color: Quarry 6619 F94

	Painted Face Fabric: FW-03 Note: Provide scrim fabric if necessary Contact: Don Bigler (310)261-4019, Modern Interiors See Detail 9/AE780 for attachment	Pattern runs horizontal Contact: Marci Colin (310)441-2289
TB-03 Display Case	Novawall Size: 48" widths Thickness: 1/2" Classic Edge System Core: USG Micore Tackboard with White Painted Face Fabric: FW-02 Note: Provide scrim fabric if necessary Contact: Don Bigler (310)261-4019, Modern Interiors See Details 9 & 10/AE780 for attachment	Fabric FW-02 Manufacturer Carnegie Style: Xorel Color: Strie 6423 F107 Contact: Marci Colin (310)441-2289
TB-04 Patient Room Tackboard @ Desk 1st Floor	Novawall Size: 48" widths Thickness: 1/2" Classic Edge System Core: USG Micore Tackboard with White Painted Face Fabric: FW-05 Note: Provide scrim fabric if necessary Contact: Don Bigler (310)261-4019, Modern Interiors See Detail 9/AE780 for attachment	Fabric FW-05 Manufacturer: Carnegie Style: Xorel Color: Strie 6423 F122 Contact: Marci Colin (310)441-2289
TB-05 Patient Room Tackboard @ Desk 2nd Floor	Novawall Size: 48" widths Thickness: 1/2" Classic Edge System	Fabric FW-06 Manufacturer: Carnegie Style: Xorel

COMMUNITY LIVING CENTER (CLC)  
 VA SIERRA NEVADA HEALTH CARE SYSTEM  
 RBB PROJECT #1017200

VA PROJECT #654-317  
 VA CONTRACT #VA 261-P-0933

	Core: USG Micore Tackboard with White Painted Face Fabric: FW-06 Note: Provide scrim fabric if necessary Contact: Don Bigler (310)261-4019, Modern Interiors See Detail 9/AE780 for attachment	Color: Meteor 6427 736 Contact: Marci Colin (310)441-2289
WB-01 Patient Room Marker Board	Custom Printed Boards Size: 6'-8"H x 3'-0"W Thickness: 3/8" To be magnetic <a href="http://www.customprintedboards.com">www.customprintedboards.com</a>	Custom text per board should include the following: Date, Nurse, Nurse Assistant, Breakfast, Lunch, Dinner, Meal Times, Room Numbers Magnets to be 1-1/2" custom design. Design to be insignias of all armed forces; Army, Navy, Marines, Air Force, etc. Three magnets to be provided per board

N. SECTION 10 12 00, DISPLAY CASES

Finish / hardware	Manufacturer	Mfg. Color Name/No.
Wood Veneer to match casework, Glass doors w/s.s. top and bottom real, concealed pivot hinges, magnetic locks, key lock; Adjustable glass shelves 5/16" tempered glass, suspended from 1/8" stainless steel hanging hardware	Helmut Geunschel Robert Schmitz 800-852-2525	Recessed Vista Wall 1 <sup>ST</sup> FLOOR - VI-R 134 SP D3 25S (3 PAIR DOORS) 2 <sup>ND</sup> FLOOR - VI-R 90 SP D3 25S (3 PAIR DOORS)

O. SECTION 10 26 00, WALL AND DOOR PROTECTION

Item	Material	Manufacturer	Mfg. Color Name/No.
High Impact Wall Covering, HIC-01	Rigid Vinyl Sheet	C/S Contact: Elisa Contreras, Integrated Marketing Concepts (626)665-1321	Style: Chameleon Color: #372 Classic Maple 4' x 8', .040" thick Install horizontally to minimize vertical seams. Butt joint at all vertical seams and inside corner seams.
Wainscot Trim		C/S Contact: Elisa Contreras, Integrated Marketing Concepts (626)665-1321	Color: 479 Cappuccino Finish: Suede
Corner Guards, CG-01		C/S Contact: Elisa Contreras, Integrated Marketing Concepts (626)665-1321	Model: FS-20R (1HR) Color: 479 Cappuccino Finish: Suede
Corner Guards, CG-01		C/S Contact: Elisa Contreras, Integrated Marketing Concepts (626)665-1321	Model: FS-20 (Non-Rated) Color: 479 Cappuccino Finish: Suede

COMMUNITY LIVING CENTER (CLC)  
 VA SIERRA NEVADA HEALTH CARE SYSTEM  
 RBB PROJECT #1017200

VA PROJECT #654-317  
 VA CONTRACT #VA 261-P-0933

Hand Rail, HR-01	Natural Wood Maple w/stainless steel corners	C/S Contact: Elisa Contreras, Integrated Marketing Concepts (626)665-1321	Style: HRWS-6C Finish: Maple
Hand Rail, HR-02	Acrovyn	C/S Contact: Elisa Contreras, Integrated Marketing Concepts (626)665-1321	Style: HRB-4C Color: To match existing
Crash Rail, CRR-01	Acrovyn	C/S Contact: Elisa Contreras, Integrated Marketing Concepts (626)665-1321	Style: SCR-64N Color: To match existing
Frame Protection (Doors)	Surface Mount, Full height	C/S Contact: Elisa Contreras, Integrated Marketing Concepts (626)665-1321	#D1 Model Door Frame Guard; Size: 2" Color: 479 Cappuccino Finish: Suede

P. SECTION 10 13 00 / 10 14 00, INTERIOR SIGNS

Sign Type	Component	Manufacturer	Mfg. Color Name/No.
Sign types listed on sheets IN210, IN211,	Refer to VA signage	Refer to VA signage package in Specification	Colors for Building per Campus Map:

IN212, Refer to legend on sheet - Refer to VA signage package in Specification Appendix for all types	package in Specification Appendix	Appendix	Lettering PTE-09 - Benjamin Moore, Southwest Spirit KM4103-3 Field Color PTE-10 - Benjamin Moore, Topaz Tease KM4101-2 Paper Color PTE-11 - Benjamin Moore, Castleford KM4121-1

Q. SECTION 10 21 23, CURTAINS AND TRACKS

Component	Material	Manufacturer	Mfg. Color Name/No.
Shower Curtain		Steel Guard Safety Products Contact: Natalie Robbins (812) 235-6068	Steel Guard Economy Plus Hospital Curtain, HC EP NMT 78 No Mesh, ALL Track Hardware to be included Size: 77"H (1" off floor) x 131"W (includes 3" + 2" drapage) Field Verify all measurements Grommets: #2 Nickel Plated Grommet Set Every 6" On Top Hem of Curtain 18" Drop Bead Chain with formed aluminum hook. (#10) Nickel Plate steel Hem: Chain Weight Sewn in Bottom of Curtain Fabric: 2 layer FR Vinyl Coated Polyester Fabric (NFPA701) with Polyester/Cotton Cubicle Curtain Color: TBD
Track Shape - L			Track Run: 5' x 5'-5" Field verify all measurements 90 Degree Curve Section 2'x 2' (Cut to size) 4'L, Aluminum Cubicle Curtain Track



COMMUNITY LIVING CENTER (CLC)  
 VA SIERRA NEVADA HEALTH CARE SYSTEM  
 RBB PROJECT #1017200

VA PROJECT #654-317  
 VA CONTRACT #VA 261-P-0933

			End Stop: Regular Single Wheel Nylon Roller Cubicle Track System Mounting: Ceiling or Suspended
--	--	--	--

R. SECTION 10 22 20, SOLID SURFACE SHOWER SYSTEMS AND PRODUCTS

Component	Material	Manufacturer	Mfg. Color/Name
Floor SSM-08 See Specs for complete information	Solid Surface	Watermark Contact: Steve Elmore (615)291-6111 x101	Color: To match Corian, Raffia; Satin/Matte Finish: Watermark White Spectrum S01S
Wall SSM-08 See Specs for complete information	Solid Surface	Watermark Contact: Steve Elmore (615)291-6111 x101	Color: To match Corian, Raffia; Satin/Matte Finish: Watermark White Spectrum S01S
Sink SSM-09 See Specs for complete information	Solid Surface	Watermark Contact: Steve Elmore (615)291-6111 x101	Color: To match Corian, Raffia; Satin/Matte Finish: Watermark White S01

S. SECTION 10 25 13, PATIENT BED SERVICE WALLS

Component	Material	Finish	Manufacturer	Mfg. Color/Name
Cabinet Frame	Trespa HPL-01	Meteon	Trespa Contact: Greg McAloney (626)253-8161	Color: Montreux Sunglow Pattern: Runs horizontal
Face Panel	Trespa	Meteon	Trespa Contact: Greg McAloney	Color: Montreux Sunglow

COMMUNITY LIVING CENTER (CLC)  
 VA SIERRA NEVADA HEALTH CARE SYSTEM  
 RBB PROJECT #1017200

VA PROJECT #654-317  
 VA CONTRACT #VA 261-P-0933

	HPL-01		(626)253-8161	Pattern: Runs horizontal
Accent Band - 1st FLOOR	Thermoplastic Resin PR-01	Varia Ecoresin	3Form Contact: Rebecca Koteen (310)272-6088	Color: Reef + Surf + White Out Finish Front: Supermatte Finish Back: Supermatte Guage: 3/8"
Accent Band - 2nd FLOOR	Thermoplastic Resin PR-02	Varia Ecoresin	3Form Contact: Rebecca Koteen (310)272-6088	Color: Aloe + White Out Finish Front: Supermatte Finish Back: Supermatte Guage: 3/8"

T. SECTION 10 44 13, FIRE EXTNGUISHER CABINETS

Component	Material	Finish
Fully recessed mounted FEC w/5/16" flat trim	"Vertical DUO" - Stainless Steel #4 clear acrylic door	Stainless Steel #4, Larsen Mfg.,with Larsen LOC, size for both 4A 60 BC and 2A10 BC Extinguishers

U. SECTION 10 28 00, TOILET, BATH, AND LAUNDRY ACCESSORIES

Identifier	Item	Material	Manufacturer	Mfg. Color Name/No.
A	42" X 1 1/4" HORIZ. GRAB BAR +33" A.F.F.		BOBRICK	B-5806-X 42
B	RECESSED TOILET SEAT COVER DISPENSER, ROLL TOILET TISSUE DISPENSER W/ NAPKIN DISPOSAL AT FEMALE OR UNISEX TOILETS		BOBRICK	B-3574
C	RECESSED PAPER TOWEL DISPENSER		BOBRICK	B-35903

COMMUNITY LIVING CENTER (CLC)  
VA SIERRA NEVADA HEALTH CARE SYSTEM  
RBB PROJECT #1017200

VA PROJECT #654-317  
VA CONTRACT #VA 261-P-0933

D	SURFACE MOUNTED PAPER TOWEL DISPENSER		BOBRICK	B-26212
E	1 1/4" HORIZ. GRAB BAR +33" A.F.F. FULL WIDTH OF ROOM WITH MODIFIED 2 1/2" RADIUS @ INTERMEDIATE SUPPORT AND WALL TO WALL END PLATE SUPPORTS		BOBRICK	CUSTOM #315638
F	24" X 36" MIRROR W/ STAINLESS STEEL CHANNEL FRAME		BOBRICK	B-1658-2436
G	SURFACE MOUNTED SOAP DISPENSER		BOBRICK	TBD
H	SURFACE MOUNTED HAND SANITIZER		BOBRICK	TBD
I	(2) SURFACE-MOUNTED SINGLE ROBE HOOKS MOUNTED AT 54" AND 72" AF		BOBRICK	B-671
J	RECESSED SOAP AND SHAMPOO HOLDER		BOBRICK	TBD
K	24" X 1 1/4" HORIZ. GRAB BAR +33" A.F.F.		BOBRICK	B-5806X24
L	FLOOR DRAIN (6" CORE DRILLED)			
M	29" X 1 1/4" HORIZ. SWING-UP GRAB BAR +33" A.F.F. W/ TOILET PAPER		BOBRICK	B-11124
N	29" X 1 1/4" HORIZ. SWING-UP GRAB BAR +33" A.F.F.		BOBRICK	B-4998
O	FOLDING SHOWER SEAT +18" AFF.		BOBRICK	B-5181
P	WASTE RECEPTACLE		BOBRICK	B-2260
Q	SHOWER HEAD CONTROLS AT 40" AFF		PER PLUMBING	
R	RECESSED HANDRYER (+38" AFF @ B.O. OF R.O.)		BOBRICK	B-750, COLOR WHITE
S	24" X 1 1/4" HORIZ. TOWEL BAR +33" A.F.F.		BOBRICK	B-5806-X 24

COMMUNITY LIVING CENTER (CLC)  
 VA SIERRA NEVADA HEALTH CARE SYSTEM  
 RBB PROJECT #1017200

VA PROJECT #654-317  
 VA CONTRACT #VA 261-P-0933

T	DRINKING FOUNTAIN, REFER TO PLUMBING DWGS.		PER PLUMBING AQUA ACCESS	A112408B-FG-VR
U	MIRROR FULL HEIGHT		BOBRICK	CUSTSOM PER DRWG - SS TRIM
V	MIRROR WALL TO WALL		BOBRICK	CUSTSOM PER DRWG - SS TRIM

V. SECTION 10 30 00, FIREPLACE

Item/ Type	Finish	Manufacturer	Mfg. Color Name/No.
Electric Fireplace	Standard	Dimplex	50" Linear Electric Fireplace, Recessed

W. SECTION 10 51 16, WOOD LOCKERS

Item/ Type	Finish	Manufacturer	Mfg. Color Name/No.
Model B, Option 1 2-Tier locker, Plastic Laminate Faced	Maple	Hollman, Inc. (972)815-4000	Size: 12W" x 18D" x 86H" Laminate: Wilsonart 7909-78 Fusion Maple Lock: Built-in combination lock by Masterlock
Butcher Block Bench	Maple	Hollman, Inc. (972)815-4000	Size: 15W" x 30L" Legs: Stainless Steel

2.6 DIVISION 12- FURNISHINGS - ALT #7

A. SECTION 12 21 13, HORIZONTAL BLINDS

COMMUNITY LIVING CENTER (CLC)  
 VA SIERRA NEVADA HEALTH CARE SYSTEM  
 RBB PROJECT #1017200

VA PROJECT #654-317  
 VA CONTRACT #VA 261-P-0933

Item/ Type	Finish	Manufacturer	Mfg. Color Name/No.
Alt #7 Integral blinds at VG-2 Locations Refer to section 084413 for custom integral blinds by Kawneer with sull sash system	Aluminum blinds, Extruded aluminum sash system to match aluminum mullions	Hunter Douglas Janice Derakhshan (562)618-3559	Style: 1" Surface Mounted Blinds Color: Aluminum With Custom Kawneer extruded aluminum sull sash
Alt #7 - Horizontal Blinds for patient Rooms		Hunter Douglas Janice Derakhshan (562)618-3559	Style: 1" Surface Mounted Blinds Color: Aluminum

B. SECTION 12 24 13, ROLLER WINDOW SHADES

Item/ Type	Finish	Manufacturer	Mfg. Color Name/No.
Mecho Shades	Motorized interior solar shades - Shade Type 1	Mecho Systems Contact: Jean-Guy, Architype, Inc. (310)652-2263	Fabric - Thermoveil Dense Basket Weave 1500 Series; 3% transparent; Color: 1513 Grey

C. SECTION 12 32 00, WOOD CASEWORK (Includes Keyboard,CPU holder, Wire management Hardware)

Item Type	Location	Manufacturer/Finish/Color
SSM-01, Solid Surface	Concierge reception desk Room 1026 & 2026,Control Room Desk reception	Manufacturer: Stoneville, Color: Canyon,

	Room 1002 at Countertop, Quartz See details	Polished, 1/2" Contact: Trishan Fernando Stoneville, Inc. (818)391-0927
SSM-02, Solid Surface	Concierge reception desk Room 1026 & 2026, Control Room reception Desk Room 1002 at Reception Face, Quartz See details	Manufacturer: Stoneville, Color: Botticino, Polished, 1/2" Contact: Trishan Fernando Stoneville, Inc. (818)391-0927
WV-01	Casework	FSC Certified Quartersawn sliced white maple with clear satin conversion varnish finish, system 5 with antimicrobial additive. Match: Book, Room: Blueprint
KEYBOARD TRAY	Concierge reception desk Room 1026, 2026, Control reception desk Room 1002	Manufacturer: Hafele Black Epoxy, Item no. 632.68.350
CPU HOLDER	Concierge reception desk Room 1026, 2026, Control reception desk Room 1002	Manufacturer: Hafele Black Epoxy, w/swivel and extension, Item no. 639.72.350
WIRE MANAGEMENT / CABLE TROUGH	Concierge reception desk Room 1026, 2026, Control reception desk Room 1002	Manufacturer: Hafele Black, Item no. 829.19.301
CABLE GROMMET	Concierge reception desk Room 1026, 2026, Control reception desk Room 1002	Manufacturer: Hafele Black Epoxy, Item no. 429.94.319

D. SECTION 12 36 61, COUNTERTOPS AND ACCESSORIES

Type	Finish/Color
------	--------------



Solid Surface 1/2" toilet countertop with integral sink 816 and 4" backsplash & sidesplash, eased edge See finish schedule for location	SSM-03 Corian Countertop, Color: Raffia, Satin/Matte; SSM-04 Corian Sink Bowl Glacier White, Satin/Matte Contact: Monica Sams, (562) 631-1078
Solid Surface 1/2" countertop with 4" backsplash, eased edge (kitchen, dining room area) See finish schedule for location	SSM-05 Corian countertop, Color: Willow, Satin/Matte Contact: Monica Sams, (562) 631-1078
Solid Surface 1/2" See finish schedule for location	SSM-06 Corian Countertop, Color: Concrete, Satin/Matte Contact: Monica Sams, (562) 631-1078
Solid Surface 1/2" toilet countertop with 4" backsplash & sidesplash, eased edge	SSM-07 Corian Countertop, Color: Raffia, Satin/Matte; SSM-04 Corian Sink Bowl Glacier White, Satin/Matte Contact: Monica Sams, (562) 631-1078
Solid Surface Patient Toilet Countertop See Section 10 22 20 above and Specs for complete information	SSM-08 Watermark countertop, Color: To match Corian Raffia, Satin/Matte; Finish: Watermark White Spectrum S01S SSM-09 Watermark Sink Bowl Color: Watermark White S01 Contact: Steve Elmore (615)291-6111 x101

E. SECTION 12 48 16, ENTRANCE FLOOR GRILLES

Component	Material	Manufacturer	Mfg. Color Name/No.
EFG-01, Entrance Floor Grille	Stainless steel with aluminum pan	C/S Contact: Elisa Contreras, Integrated Marketing Concepts (626)665-1321	Floorometry 101, standard pattern

COMMUNITY LIVING CENTER (CLC)  
 VA SIERRA NEVADA HEALTH CARE SYSTEM  
 RBB PROJECT #1017200

VA PROJECT #654-317  
 VA CONTRACT #VA 261-P-0933

## 2.7 DIVISION 14 - CONVEYING EQUIPMENT

### A. SECTION 14 24 00, HYDRAULIC ELEVATORS

Item/ Type	Finish	Manufacturer	Mfg. Color Name/No.
Holed Hydraulic 4500 Elevator	Door & Entrance - Stainless Steel Raised Laminate Panels - Wilsonart Fusion Maple	Otis Contact: Lisa Fox (775)250-4815	Ceiling: 4-LED Flush Ceiling (standard), stainless steel panel. Hand Rail: Round bar stainless steel Bumper Rail-Side & Rear: stainless steel

## 2.8 DIVISION 22 - PLUMBING

### A. SECTION 22 40 00, PLUMBING FIXTURES AND TRIM

Item	Color
Water Closet	White
Urinal	White
Lavatories	White
Service Sink Corner	Stainless Steel
Pantry Sink	Stainless Steel
Drinking Fountain	Stainless Steel

### B. SECTION 22 43 00, HEALTHCARE PLUMBING FIXTURES

Item	Color
Hydrotherapy Tub	Manufacturer: Arjo Contact: 1-800-323-1245 Color: White

COMMUNITY LIVING CENTER (CLC)  
 VA SIERRA NEVADA HEALTH CARE SYSTEM  
 RBB PROJECT #1017200

VA PROJECT #654-317  
 VA CONTRACT #VA 261-P-0933

	Model: Hydromassage Type: Rhapsody System 25
--	---

## 2.9 DIVISION 26 - ELECTRICAL

### A. SECTION 26 51 00, BUILDING LIGHTING INTERIOR

Fixture Type	Exterior Finish	Color
F1, F2, F2X, F3X, F4, F4X, F5, F8, F9, F10, F11, F11X, F12, F14, F15, F20, F20X, F21, F22, F23, L4, L9, X3	WHITE PAINT ON ANY EXPOSED TRIM	WHITE
L1, L1X, L2, L3, L5, L6, L6X, L10X, L11X	CLEAR ALZAK DIFFUSE TRIM	CLEAR ALZAK DIFFUSE
X1, X2	BRUSHED ALUMINUM HOUSING	BRUSHED ALUMINUM
D1	SATIN NICKEL	SATIN NICKEL
D2	ALUMINUM	ALUMINUM
D3	BRUSHED PLATINUM	BRUSHED PLATINUM
F19, D4	POLISHED CHROME	POLISHED CHROME
F7	METALLIC BSIL	ALUMINUM
F18X	TITANIUM SILVER	TITANIUM SILVER

### B. SECTION 26 56 00, SITE LIGHTING

Type and Component	Exterior Finish	Manufacturer	Mfg. Name/No.
X5	DIE-CAST ALUMINUM ON WHITE	LITHONIA	SEE FIXTURE SCHEDULE SHEET E002

COMMUNITY LIVING CENTER (CLC)  
 VA SIERRA NEVADA HEALTH CARE SYSTEM  
 RBB PROJECT #1017200

VA PROJECT #654-317  
 VA CONTRACT #VA 261-P-0933

L7, L8, L13	BRONZE	BETALED	SEE FIXTURE SCHEDULE SHEET E002
X4	BRONZE	LITHONIA	SEE FIXTURE SCHEDULE SHEET E002
L14, L15	METALLIC ALUMINUM	COLE LIGHTING	SEE FIXTURE SCHEDULE SHEET E002
F13	DIE CAST ALUMINUM-DARK BRONZE	KIM LIGHTING	SEE FIXTURE SCHEDULE SHEET E002
L12	SILVER	KENALL	SEE FIXTURE SCHEDULE SHEET E002

**DIVISION 27 - WIRELESS DIGITAL DISPLAY CLOCKS**

A. SECTION 27 42 19, ELECTRONIC DIGITAL SYSTEM

Item	Manufacturer	Mfg. Color Name/No.
Wall Clock Patient Rooms CLK-01	Primex Wireless, Inc. Contact: Dwayne Walker (262)745-4104	Style: GPS Synchronized Time Systems Personal Series LCD CLock Model#: XRA4Z200
Wall Clock Concierge Desk Column CLK-02	Primex Wireless, Inc. Contact: Dwayne Walker (262)745-4104	Style: Traditional Series Clock 14339 16" 120VAC Black

COMMUNITY LIVING CENTER (CLC)  
VA SIERRA NEVADA HEALTH CARE SYSTEM  
RBB PROJECT #1017200

VA PROJECT #654-317  
VA CONTRACT #VA 261-P-0933

**PART III EXECUTION**

**3.1 FINISH SCHEDULES & MISCELLANEOUS ABBREVIATIONS**

FINISH SCHEDULE & MISCELLANEOUS ABBREVIATIONS	
Term	Abbreviation
Access Flooring	AF
Accordion Folding Partition	AFP
Acoustical Ceiling	ACT
Acoustical Ceiling, Special Faced	AT (SP)
Acoustical Metal Pan Ceiling	AMP
Acoustical Wall Panel	AWP
Acoustical Wall Treatment	AWT
Acoustical Wallcovering	AWF
Anodized Aluminum Colored	AAC
Anodized Aluminum Natural Finish	AA
Baked On Enamel	BE
Brick Face	BR
Brick Flooring	BF
Brick Paving	BP
Carpet	CP
Carpet Athletic Flooring	CAF
Carpet Module Tile	CPT
Ceramic Glazed Facing Brick	CGFB
Ceramic Mosaic Tile	FTCT
Chair Rail	CHR
Clock	CLK

Concrete	C
Concrete Masonry Unit	CMU
Corner Guard	CG
Crash Rail	CRR
Divider Strips Marble	DS MB
Entrance Floor Grille	EFG
Epoxy Coating	EC
Epoxy Resin Flooring	ERF
Existing	E
Exposed Divider Strips	EXP
Exterior	EXT
Exterior Finish System	EFS
Exterior Paint	EXT-P
Exterior Stain	EXT-ST
Fabric Wallcovering	FW
Facing Tile	SCT
Feature Strips	FS
Fiber Reinforced Plastic	FRP
Floor Mats & Frames	FM
Floor Tile, Mosaic	FT
Fluorocarbon	FC
Folding Panel Partition	FP
Foot Grille	FG
Glass	GL
Glass Masonry Unit	GUMU
Glazed Face CMU	GCMU
Glazed Structural Facing Tile	SFTU
Granite	GT
Guard Rail	GR
Gypsum Wallboard	GWB
Hand Rail	HR
High Glazed Coating	SC
High Pressure Laminate	HPL
Latex Mastic Flooring	LM

COMMUNITY LIVING CENTER (CLC)  
 VA SIERRA NEVADA HEALTH CARE SYSTEM  
 RBB PROJECT #1017200

VA PROJECT #654-317  
 VA CONTRACT #VA 261-P-0933

Linear Metal Ceiling	LMC
Linear Wood Ceiling	LWC
Marble	MB
Material	MAT
Mortar	M
Mosaic Tile	MT
Multi-Color Coating	MC
Natural Finish	NF
Paint	P
Paint Eggshell	PTE
Paint Semi-gloss	PTS
Paver Tile	PVT
Perforated Metal Facing (Tile or Panels)	PMF
Plaster	PL
Plaster High Strength	HSPL
Plaster Keene Cement	KC
Plastic Laminate	HPDL
Polyester Resin	PR
Polypropylene Fabric Wallcovering	PFW
Porcelain Paver Tile	PPT
Porcelain Tile	PT
Porcelain Tile Base	PTB
Precast Concrete Paver Tile	PCPT
Quarry Tile	QT
Radiant Ceiling Panel System	RCP
Resilient Stair Tread	RST
Rubber Base	RB
Rubber Tile Flooring	RT
Self Coving Base	SCB
Solid Surface Material	SSM

Spandrel Glass	SLG
Stain	ST
Stainless Steel	SS
Stone Flooring	SF
Structural Clay	SC
Suspension Decorative Grids	SDG
Tackboard	TB
Terrazzo Portland Cement	PCT
Terrazzo Tile	TT
Terrazzo, Thin Set	
Textured Gypsum Ceiling Panel	TGC
Textured Metal Ceiling Panel	TMC
Thin set Terrazzo	TST
Top Cap	TC
Veneer Plaster	VP
Vinyl Base	VTB
Vinyl Coated Fabric Wallcovering	W
Vinyl Composition Tile	VCT
Vinyl Sheet Flooring	VSF
Vinyl Sheet Flooring (Welded Seams)	WSF
Vinyl Tile	VT
Wall Border	WB
Welding Rod	WR
Wood	WD
Wood Veneer	WV



COMMUNITY LIVING CENTER (CLC)  
VA SIERRA NEVADA HEALTH CARE SYSTEM  
RBB PROJECT #1017200

VA PROJECT #654-317  
VA CONTRACT #VA 261-P-0933

### **3.2 ROOM FINISH SCHEDULE**

A. Refer to Drawings.

--- E N D---