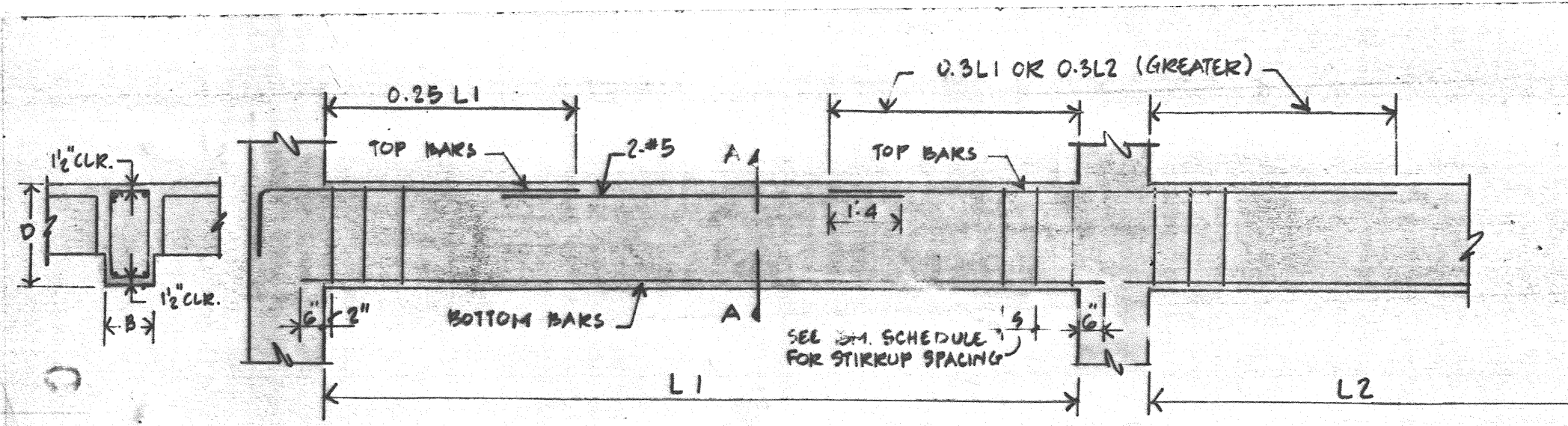
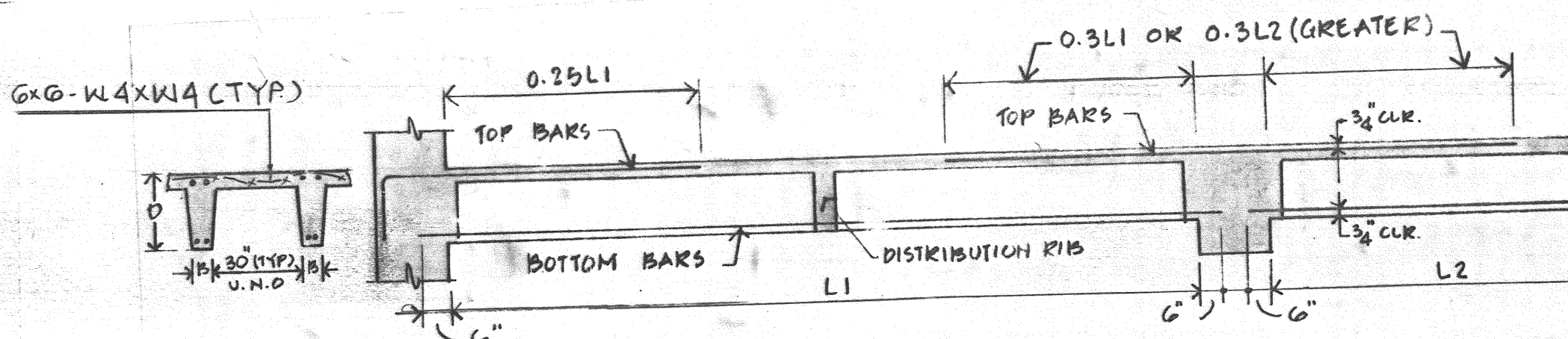


one eighth inch = one foot
one quarter inch = one foot
three eighths inch = one foot
one half inch = one foot
three quarters inch = one foot
one inch = one foot
one and one half inches = one foot
two inches = one foot
three inches = one foot



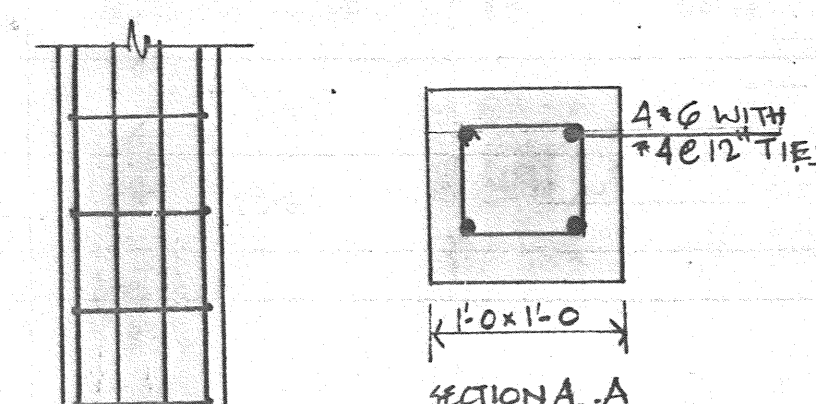
TYPICAL BEAM REINFORCEMENT



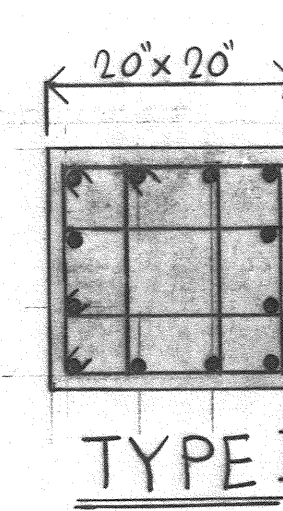
TYPICAL JOIST REINFORCEMENT

BEAM SCHEDULE									
BEAM MARK	WIDTH (B)	DEPTH (D)	MAIN REINFORCING STEEL TOP LEFT SUPP.	TOP RIGHT SUPP.	AT SA. END	BAR NO.	REMARKS		
1B1	24	24	6-#9	3-#9	7-#9	19 #6	12	See Section 7/10-82 for add'l. det.	
1B2	24	24	5-#9	---	---	19 #6	12	See Section 7/10-82 for add'l. detail	
1B3	24	24	5-#9	7-#9	3-#9	19 #6	12	See Section 10-82 for additional detail	
1B4	36	19	2-#9	---	5-#9	14 #6	12	Continue top bars 8'-6" into right supp. Provide add'l. reinf. per sec. 5/88.	
1B5	36	19	2-#9	5-#9	---	14 #6	12	Continue top bars 8'-6" into left supp. Provide add'l. reinf. per sec. 5/88.	
RB1	24	24	6-#9	3-#9	7-#9	19 #6	12	See Section 7/10-82 for add'l. det.	
RB2	24	24	5-#9	---	7-#9	19 #6	12	See Section 7/10-82 for add'l. det.	
RB3	24	24	6-#9	---	3-#9	19 #6	12	See Section 7/10-82 for add'l. det.	
RB4	36	19	2-#9	---	5-#9	14 #6	12	Continue top bars 8'-6" into left supp. Addl. reinf. per sec. 5/88.	
RB5	36	19	2-#9	5-#9	---	14 #6	12	Continue top bars 8'-6" into right supp. Addl. reinf. per sec. 5/88.	
RB6	36	19	2-#9	5-#9	2-#9	14 #6	12	Continue top bars 8'-6" into end of supp. Addl. reinf. per sec. 5/88.	
RB7	16	24	5-#8	2-#8	5-#8	12 #8	16		
RB8	16	24	3-#8	---	5-#8	12 #8	16		
RB9	16	24	5-#8	---	2-#8	12 #8	16		
RB10	24	15 1/2	3-#8	2-#8	4-#8	10 #6	12	Continue 4-#8 top bars full span of RB 11.	
RB11	24	15 1/2	2-#8	---	---	6			
RB12	16	24	6-#8	2-#8	2-#8	12 #8	16		
RB13	15x10	4 3/4	5-#8	2-#8	2-#8	---	12	See Section	
RB14	16 1/2	32	5-#6	5-#6	5-#6	11 #6	12	Provide top bars for full span of beam	
RB15	17	15 1/2	5-#6	5-#6	5-#6	11 #3	6	Provide top bars for full span of beam	
RB16	16 1/2	32	5-#6	---	---	11 #6	12	Provide 5-#6 top bars for full span	
RB17	16	24	4-#8	2-#8	5-#8	12 #8	16	Continue 2-#8 full span of RB18 & bend into right supp.	
RB18	16	24	2-#8	---	---	---	8		

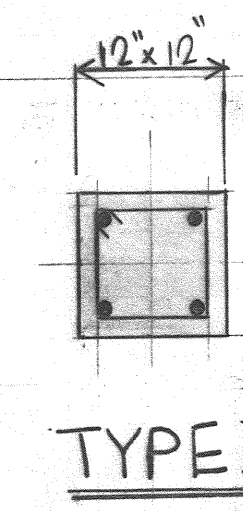
JOIST SCHEDULE									
JOIST MARK	WIDTH (B)	DEPTH (D)	MAIN REINFORCING STEEL TOP LEFT SUPP.	TOP RIGHT SUPP.	AT SA. END	BAR NO.	REMARKS		
1J1	6	19	2-#8	2-#5	---	---		Continue 2-#8 top bars into 1J2's and then 8'-0" into 1J3	
1J2	6	19	2-#5	---	---	---			
1J3	6	19	2-#8	1-#5	2-#5	---		Continue 2-#8 top bars into 1J2's and then 8'-0" into 2J3	
2J1	6	19	2-#8	2-#5	---	---			
2J2	6	19	2-#5	---	---	---			
2J3	6	19	2-#8	1-#5	2-#5	---			
2J4	8 1/2	19	2-#8	2-#5	---	---		Continue 2-#8 top bars into 2J5's and then 8'-0" into 2J6	
2J5	8 1/2	19	2-#5	---	---	---			
2J6	8 1/2	19	2-#8	1-#5	2-#5	---			
2J7	6	19 1/2	2-#6	2-#6	2-#6	---			
2J8	6	15 1/2	2-#6	---	2-#6	---		Hook into wall @ discontinuous end	
2J9	24	15 1/2	4-#6	4-#6	4-#6	---		Top reinf. cont. full span. Hook into wall or beam at each end. Provide top bars full span of joist	
2J10	30 1/2	15 1/2	5-#6	5-#6	5-#6	---			
2J11	6	15 1/2	2-#6	2-#6	---	---		Note top reinf. cont. full span	
2J12	53	15 1/2	6-#6	4-#6	---	---			
2J13	6	15 1/2	2-#6	---	2-#6	---		Provide top bars full span of joist	
2J14	5	15 1/2	2-#6	2-#6	2-#6	---		Provide top bars full span of joist	
2J15	5	15 1/2	2-#4	2-#4	2-#4	---			
2J16	10 1/2	15 1/2	4-#6	4-#6	4-#6	---			



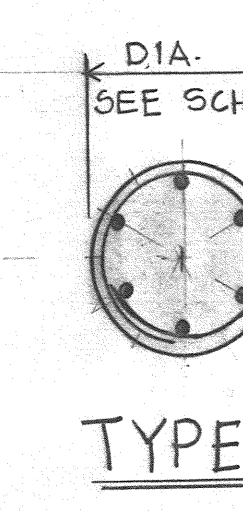
TYPICAL COLUMN FOOTING DETAIL



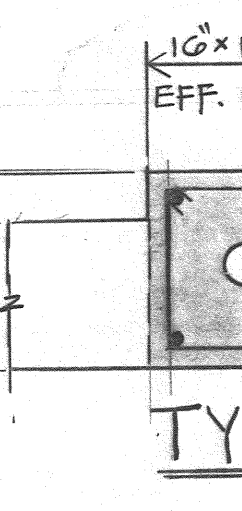
TYPE I



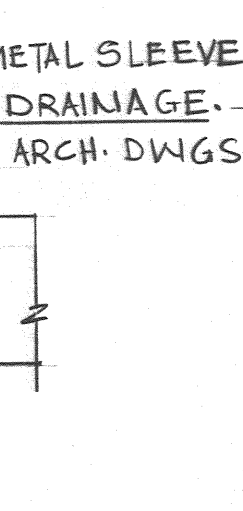
TYPE II



TYPE III

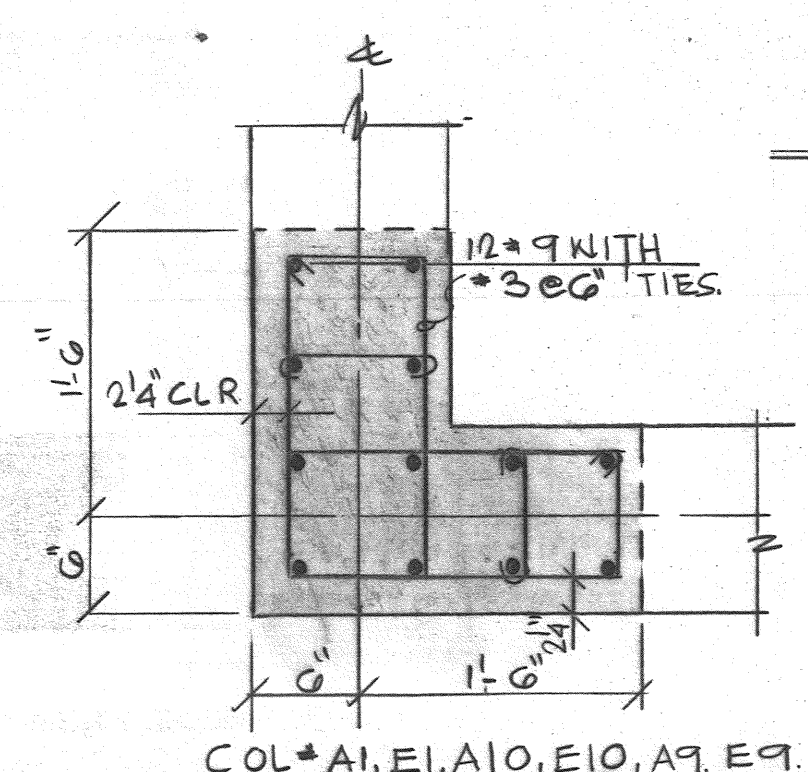


TYPE IV

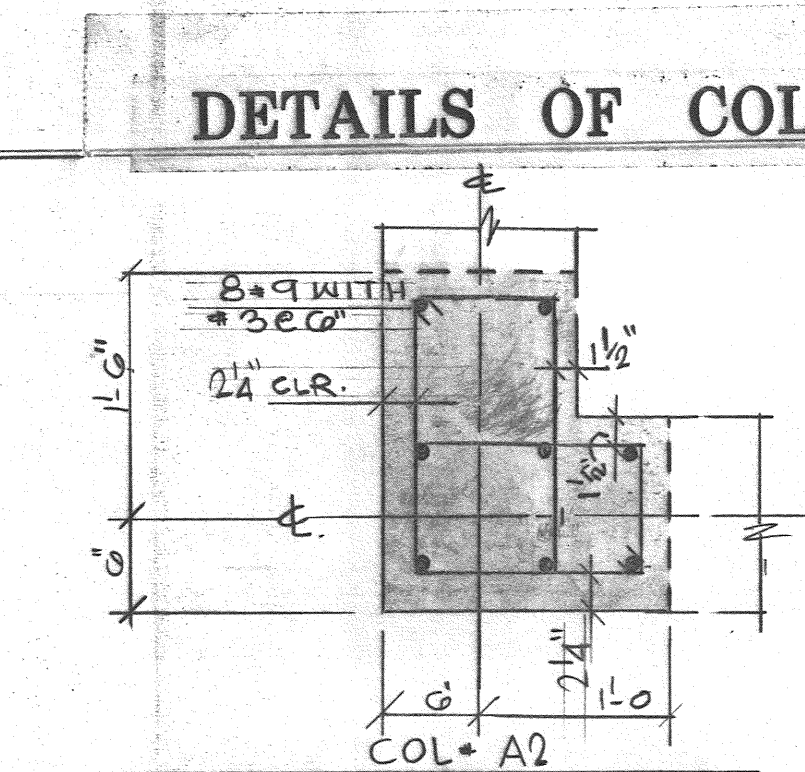


TYPE V

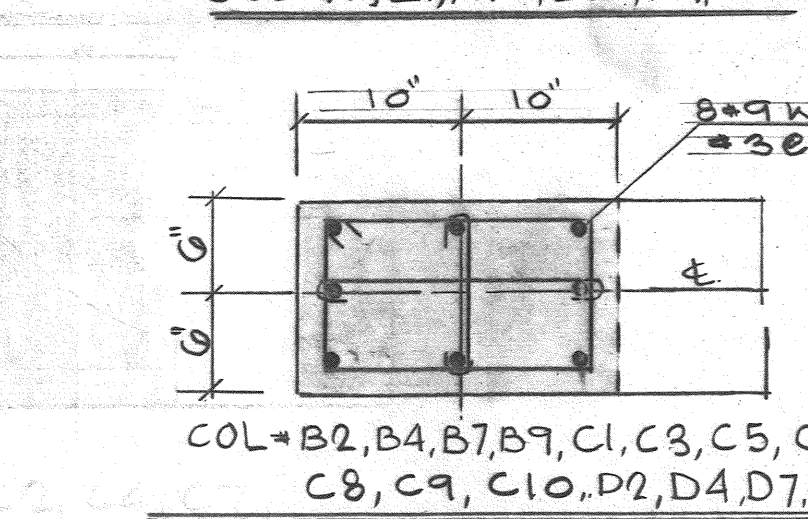
DETAILS OF COLUMNS



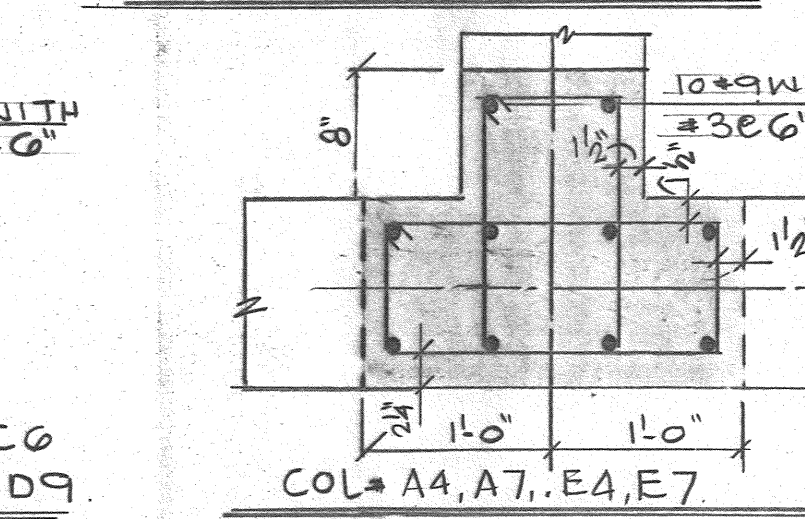
COL. # A1, E1, A10, E10, A9, E9



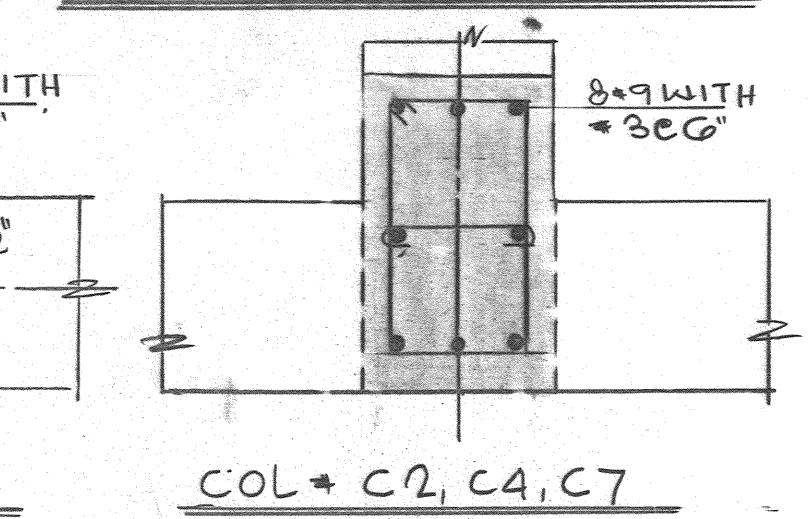
COL. # A2, A3, A5, A6, A8, B1, D1, B10, D10, E2, E3, E5, E6, E8



COL. # B2, B4, B7, B9, C1, C3, C5, C6, C8, C9, C10, D2, D4, D7, D9



COL. # A4, A7, E4, E7



COL. # C2, C4, C7

DETAILS OF WALL COLUMNS

COLUMN & FOOTING SCHEDULE									
Column Mark	B3,D3 B5,D5 B6,D6 B8,D8	A1 Thru A10 C1 Thru C10 E1 Thru E10 B1, B2, B3, B7, B9, B10 D1,D2,D4,D7,D9,D10	F19 G19,G20 H19,H20 J22,J23	H21,H22	G, G-23 H, H-23 K, K-20 K, K-21 K, K-22 K, K-23	H23	J, J-20, J, J-21, J, J-22, J, J-23, K, K-20, K, K-21, K, K-22, K, K-23	F11, Q11, P12, Q12, P13# Q13, P14#Q14, P15, Q15, P16, Q16, P17, Q17, M5, M5	F18 G18 L13
Type	I	Wall Columns See Details Dwg. No. 10-510	V	II	III	III	III	IV	IV
Size	20"x20"		10"x12"	12"x12"	12" Dia.	24" Dia.	16" Dia.	16"x16"	16"x16"
Reinf	12-#9 #3 ties #1'-0"		h-#6 #3 ties @12"	h-#6 #3 ties #1'-0"	6-#6 #3 ties #1'-0"	6-#8 #3 ties #1'-0"	8-#9 #3 ties #1'-0"	h-#6 #3 ties @12"	h-#6 #3 ties @12"
Size	8'-6x8'-6" x2'6"	Wall Ftg. (See Plan)	Wall Ftg. (See Plan)	h-#6xh-6 x1'-2"	h-#6xh-6 x1'-2"	h-#6xh-6 x1'-2"	3'-0(W)x1'-2(D) h-#6xh-6 Cont. Ftg.	2 Col. Combine Ftg. 8'-0x12'-6x1'-2	Wall Ftg. (See Plan)
Reinf	8-#9 Ea. Way	Wall Ftg. (See Plan)	Wall Ftg. (See Plan)	h-#6 Ea. Way	h-#6 Ea. Way	h-#4 (L.V.) h-#2 (S.V.)	h-#4 (L.V.) h-#2 (S.V.)	h-#4 (L.V.), 12-#6 (S.V.) Top & Bot.	See Plan
D, L, E, A, D	D, L, 313 ^k	235 ^k	h ^k	62 ^k	3h ^k	h ^k	21 ^k /19.6 ^k	h ^k	78 ^k (*)
D, L, E, A, D	D, L, 235 ^k	176 ^k	12 ^k	16 ^k	h ^k	9 ^k	3 ^k /2.8 ^k	9 ^k	16 ^k (*)
Col. E, Q, R	-----	-----	-----	-----	-----	-----	7"/66.2 ^k	-----	-----
Notes	(2)	(2)	---	---	---	---	---	---	---
SPECIAL NOTES:									
1. Load shown under one category is for the worst condition									
2. Columns are designed to carry 3 future floors. See detail of future expansions for these cols. on dwg. 10-51.									