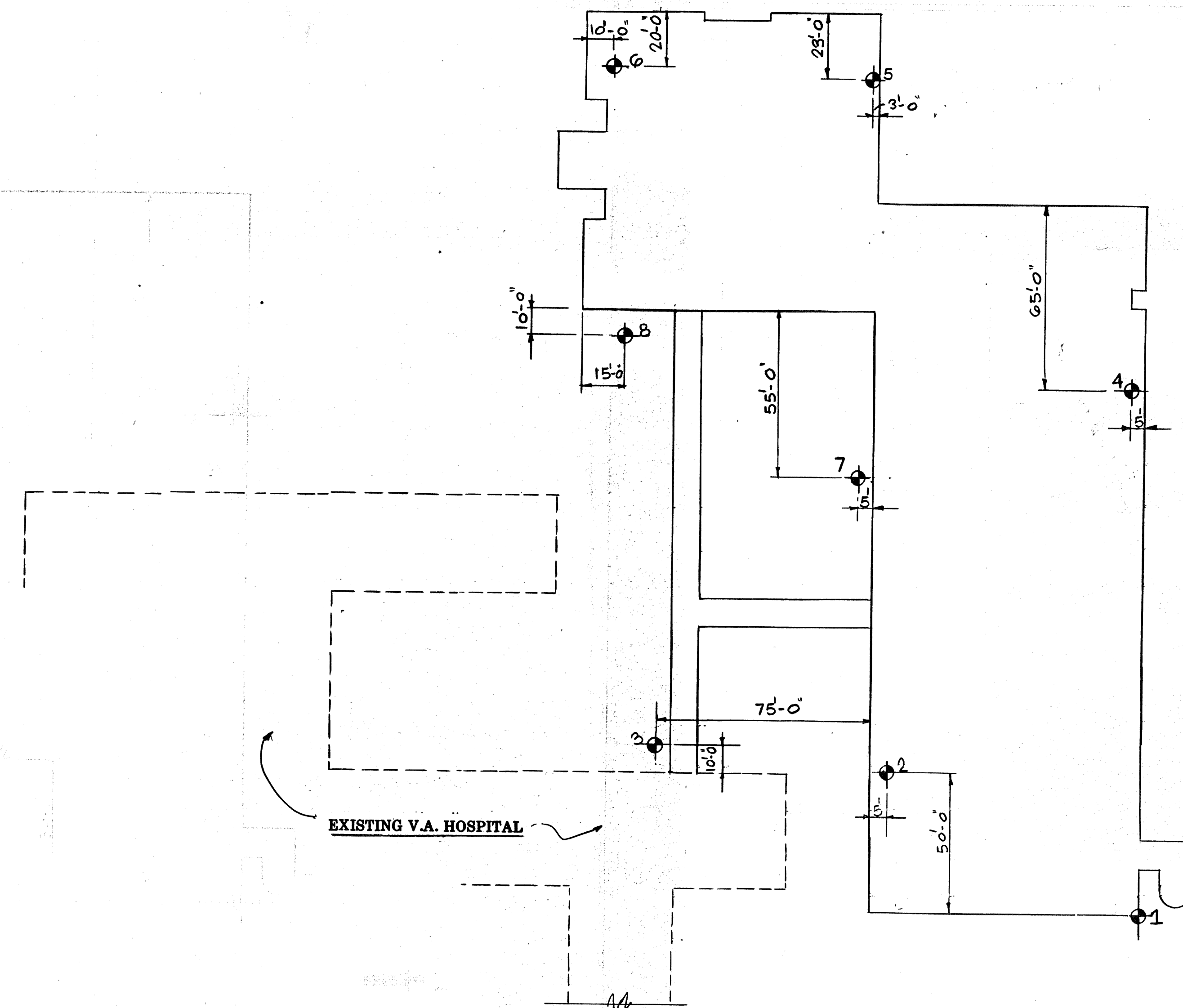
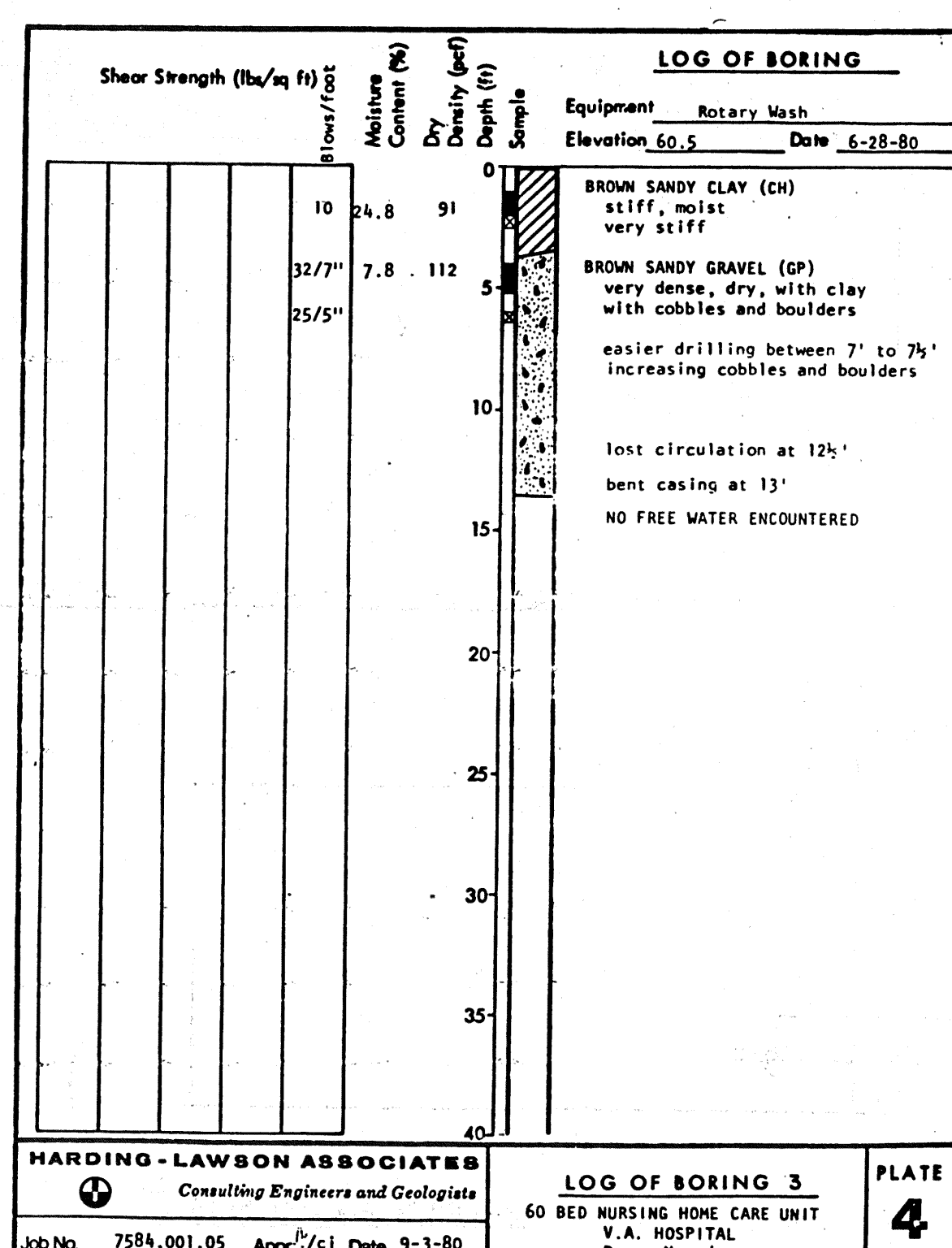
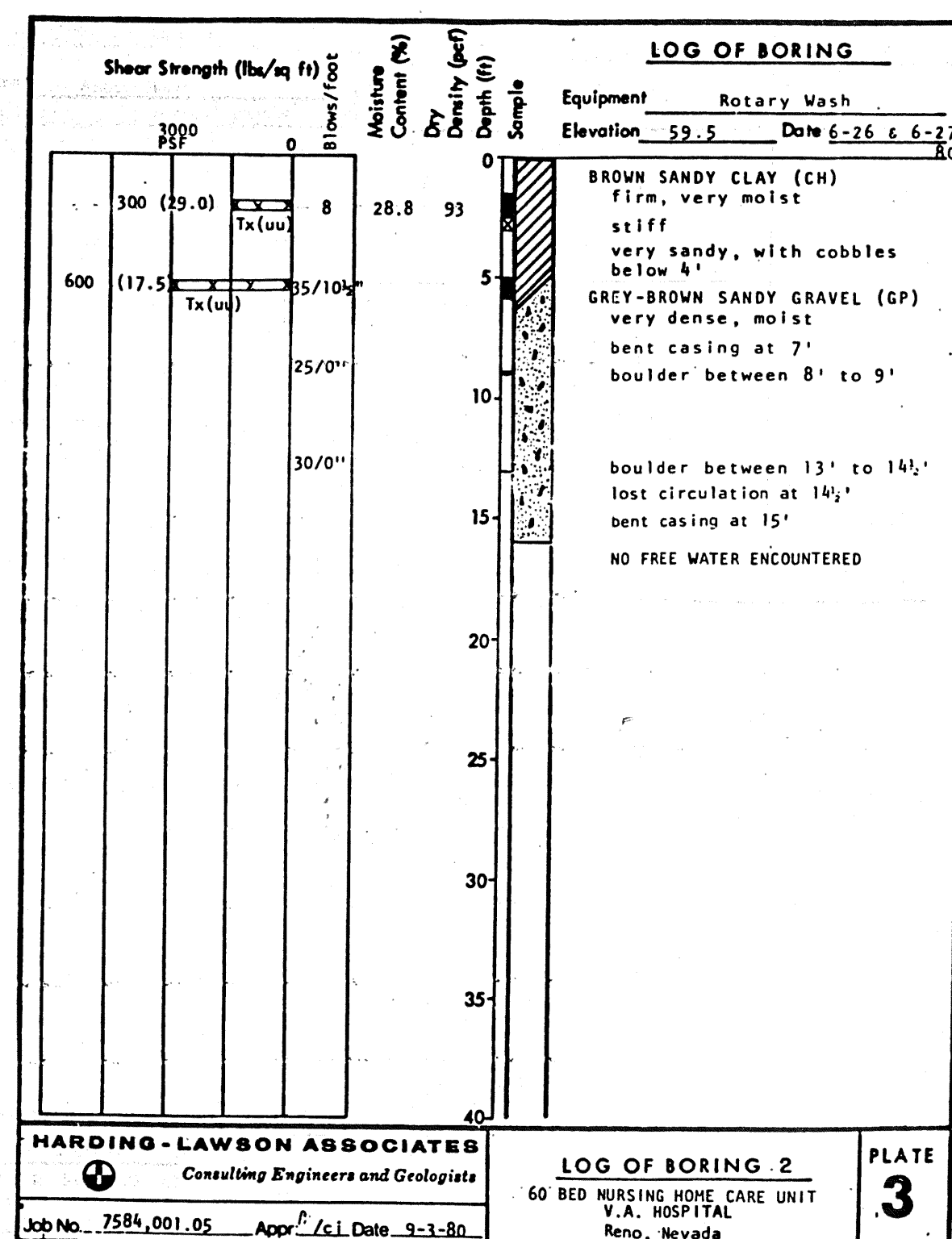
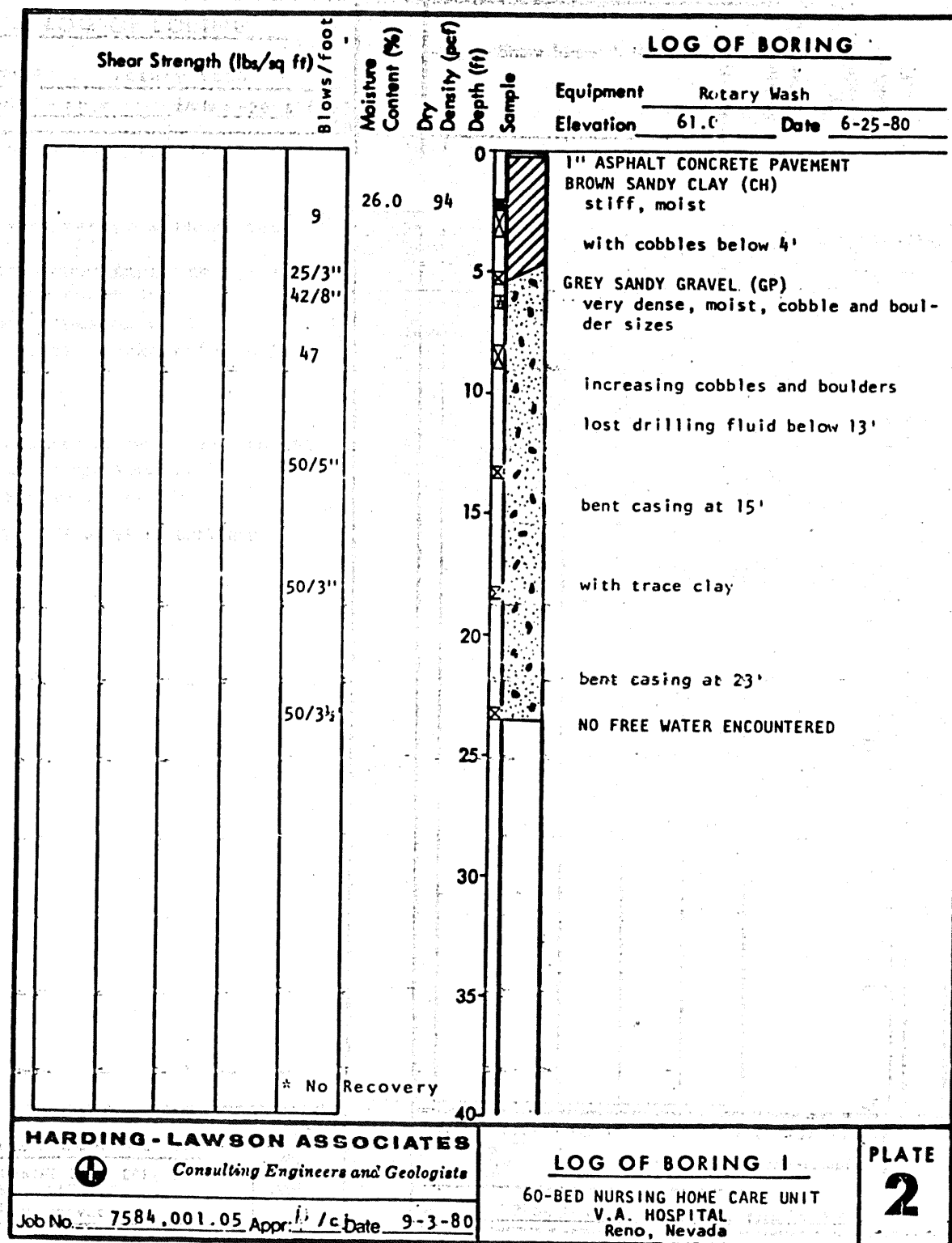
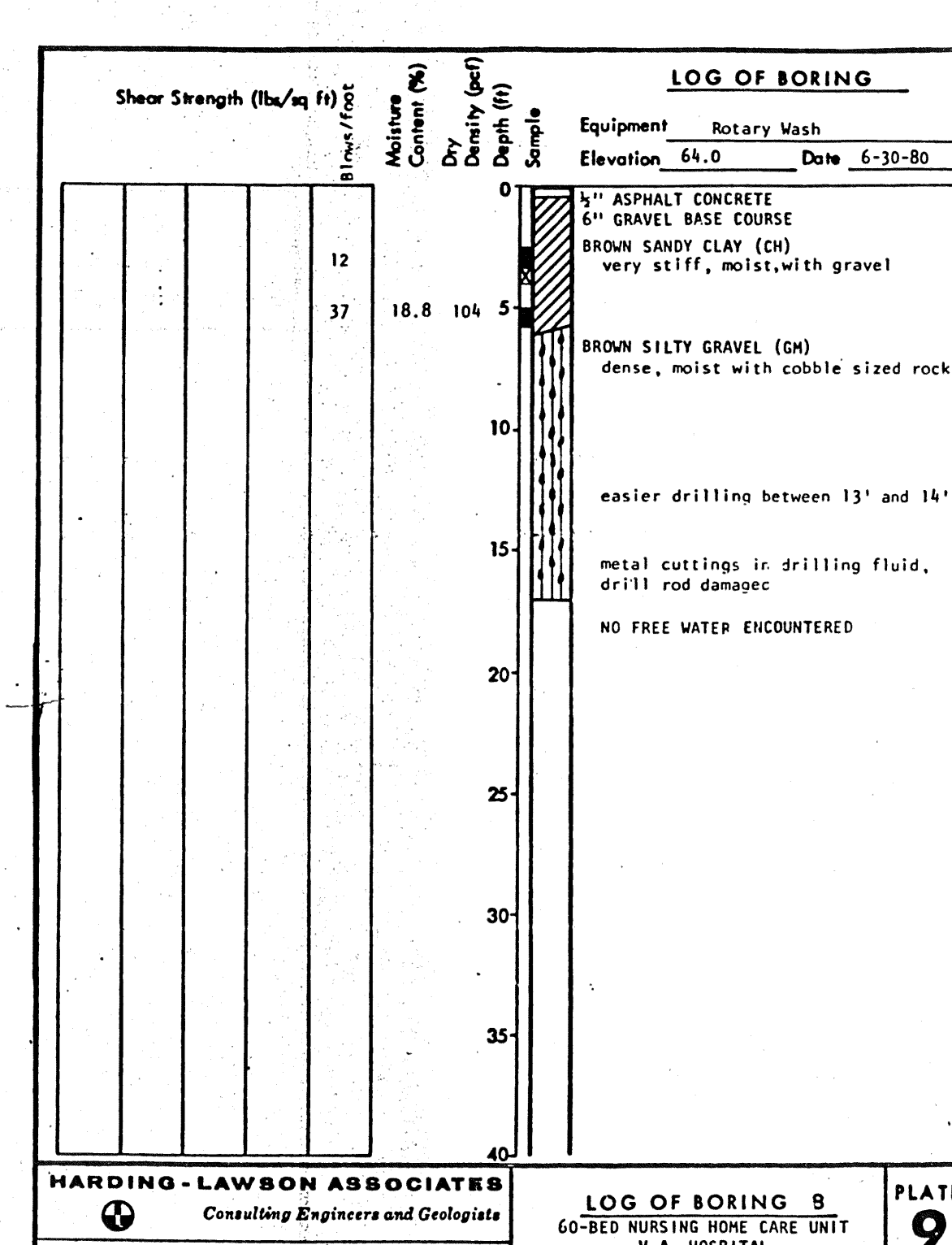
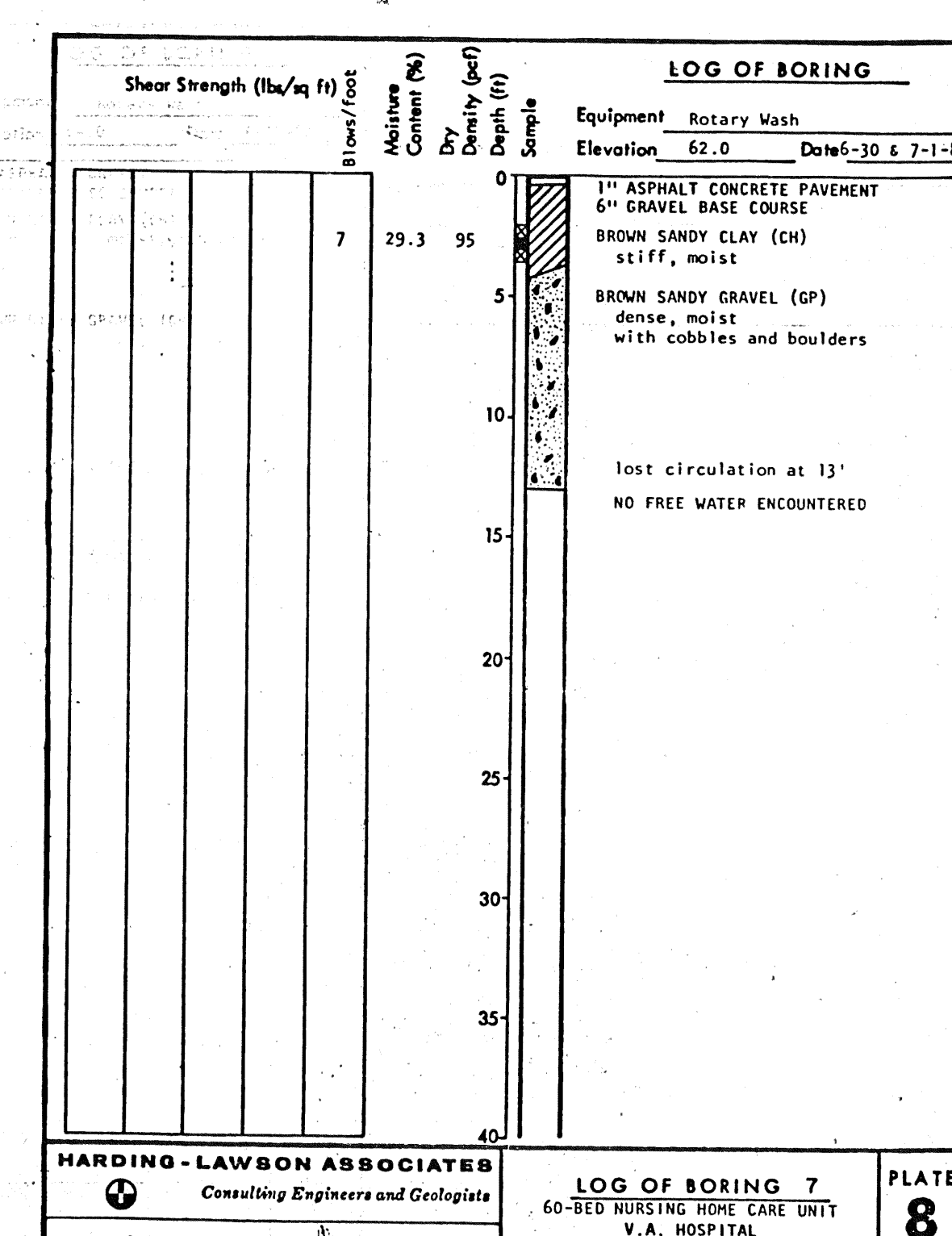
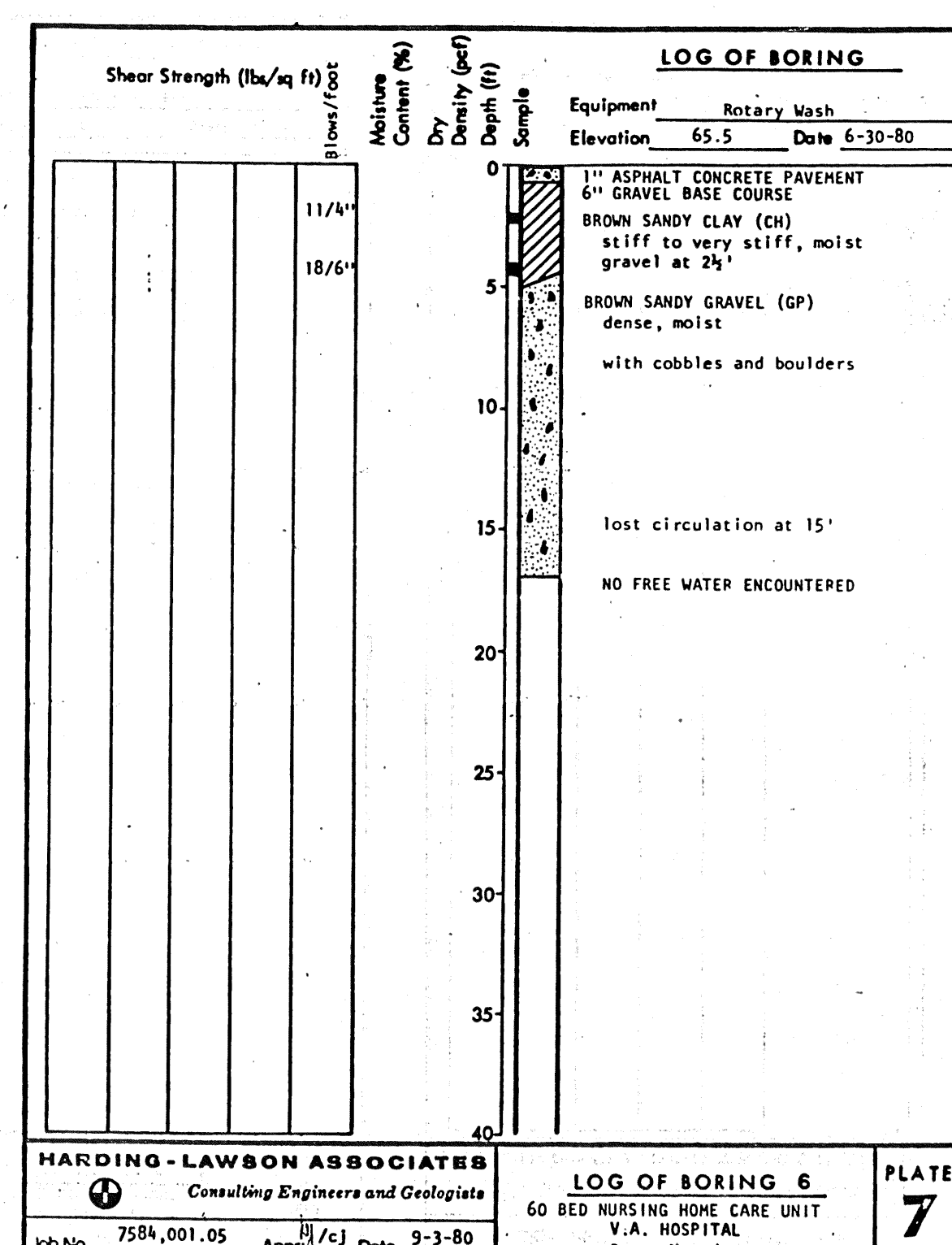
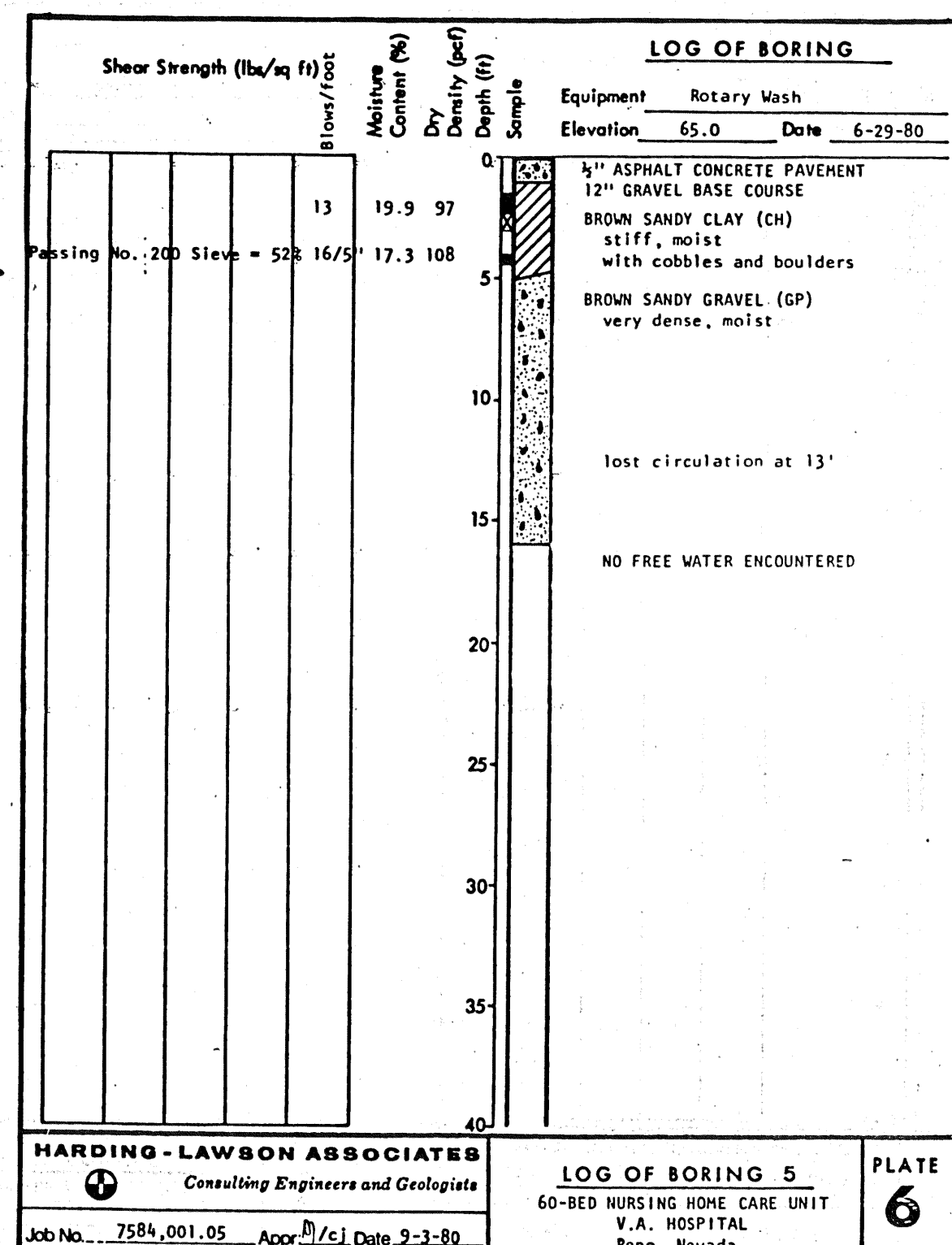
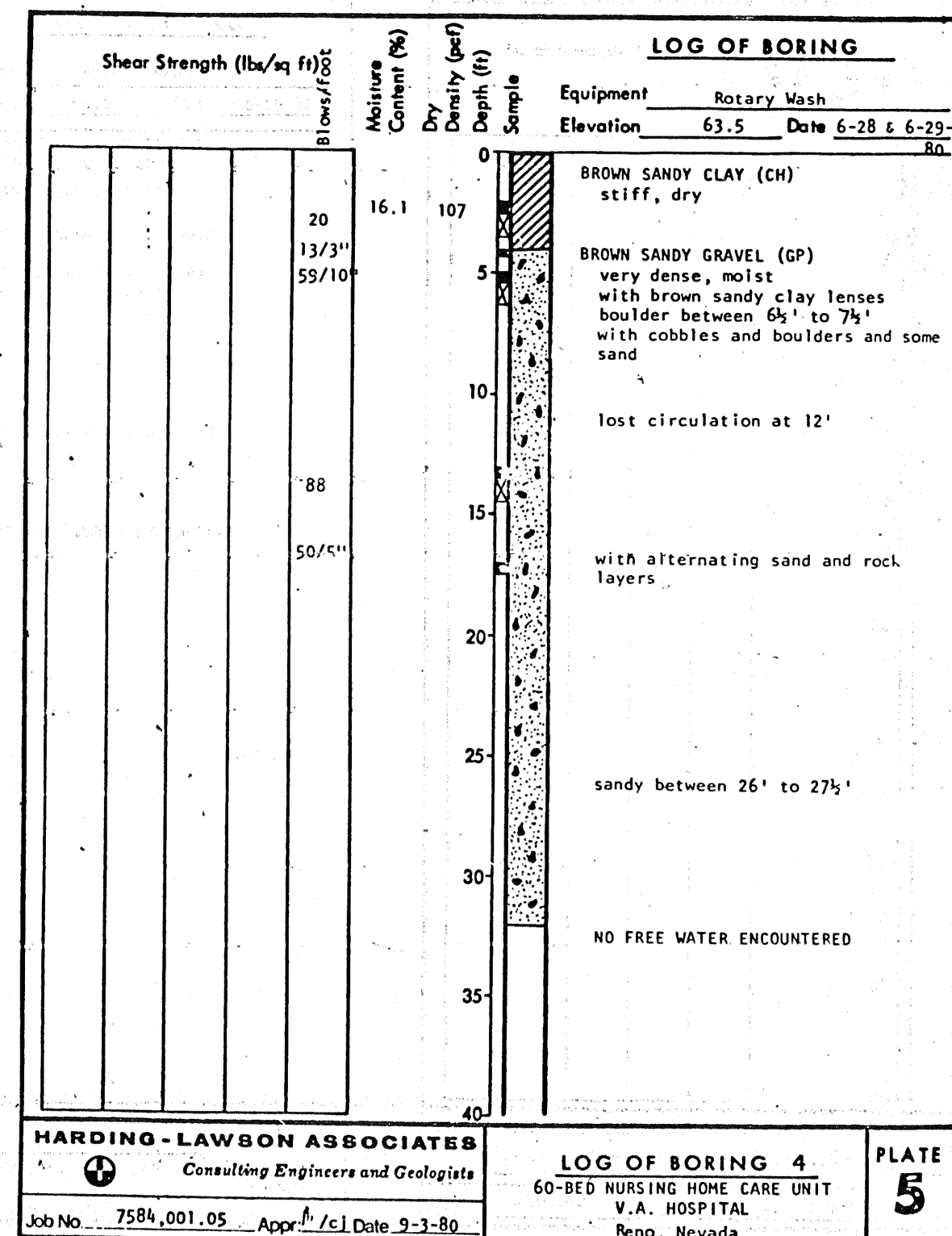


one and one half inches = one foot
one inch = one foot
three quarters inch = one foot
one half inch = one foot
three eighths inch = one foot
one quarter inch = one foot
one eighth inch = one foot



BORING LOCATION PLAN



REFER TO THE GEOTECHNICAL REPORT
PREPARED BY THE HARDING-LAWSON
ASSOCIATES FOR ADDITIONAL INFORMATION

Revisions	Date

VA FORM 08-6231, OCT 1978

Drawing Title Subsurface Investigation Data		Project Title 60 Bed Nursing Home Care Unit		Date 6-17-81
Approved: Division Chief J.S. Lawson		Drawn R.G.S.		Project No. 654-035
Approved: Service Director R. J. [Signature]		Checked L.S.H.		DRAWING NO. 10-B1
		Building Number Ten		DWG. OF
		Location VAMC Reno, Nevada		

Veterans Administration