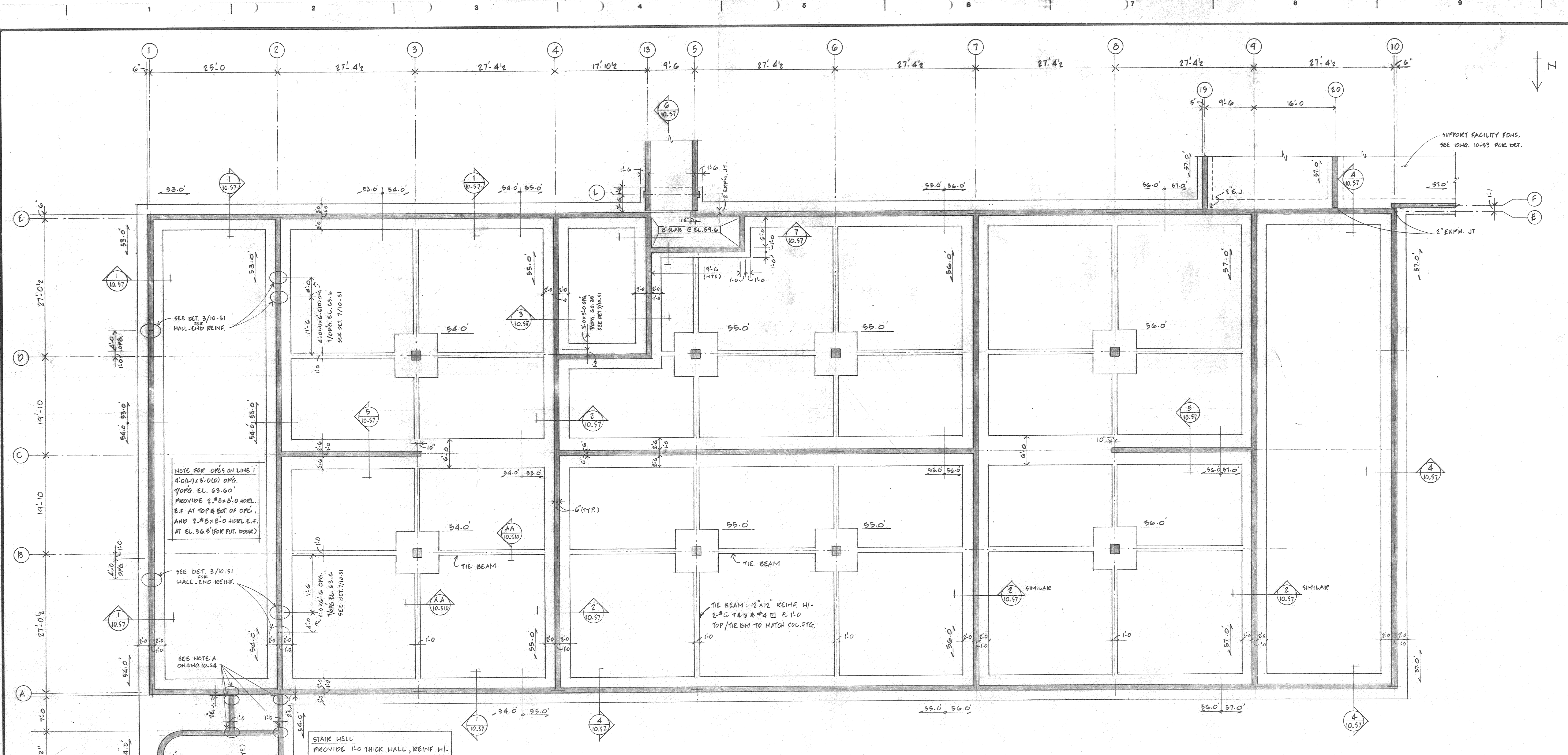
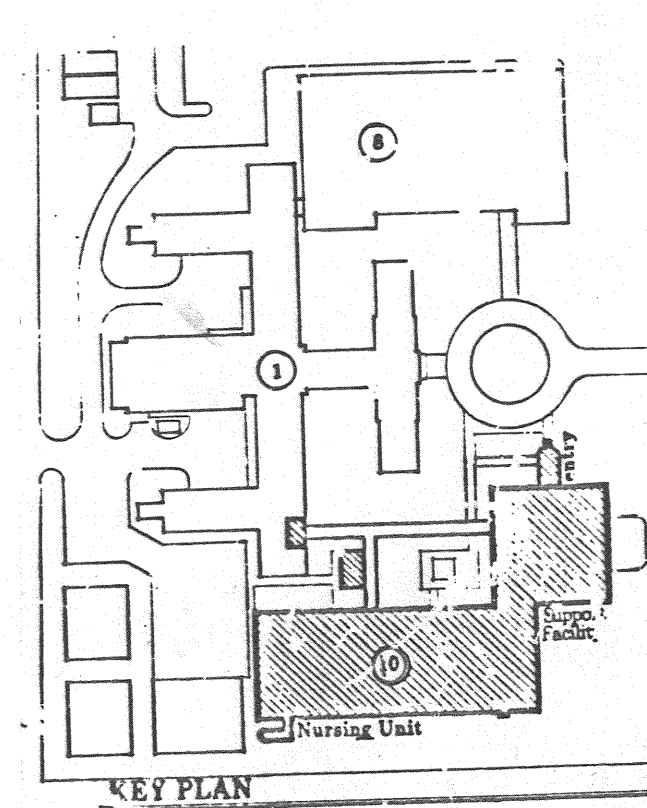


three inches = one foot  
one and one half inches = one foot  
one inch = one foot  
three quarters inch = one foot  
one half inch = one foot  
one quarter inch = one foot  
three eighths inch = one foot  
one eighth inch = one foot



FOUNDATION PLAN - NURSING HOME CARE UNIT  
SCALE: 1/8" = 1'-0"  
(FIGURES SHOWN THUS ↖ INDICATE BOTTOM OF FOOTING ELEVATION)  
(ESTIMATED QUANTITY OF ROCK EXCAVATION = 200 cu yds.)



Revisions		Date	Drawing Title		Project Title	Date
			Foundation Plan		60 Bed Nursing Home Care Unit	6-17-81
			NHC			Project No. 654-035
			Approved: Division Chief		Building Number	Drawing No.
			J. B. [Signature]		Ten	10-S2
			Approved: Service Director		Location	Dwg. Of
			[Signature]		VAMC Reno, Nevada	
			Checked: LSH			