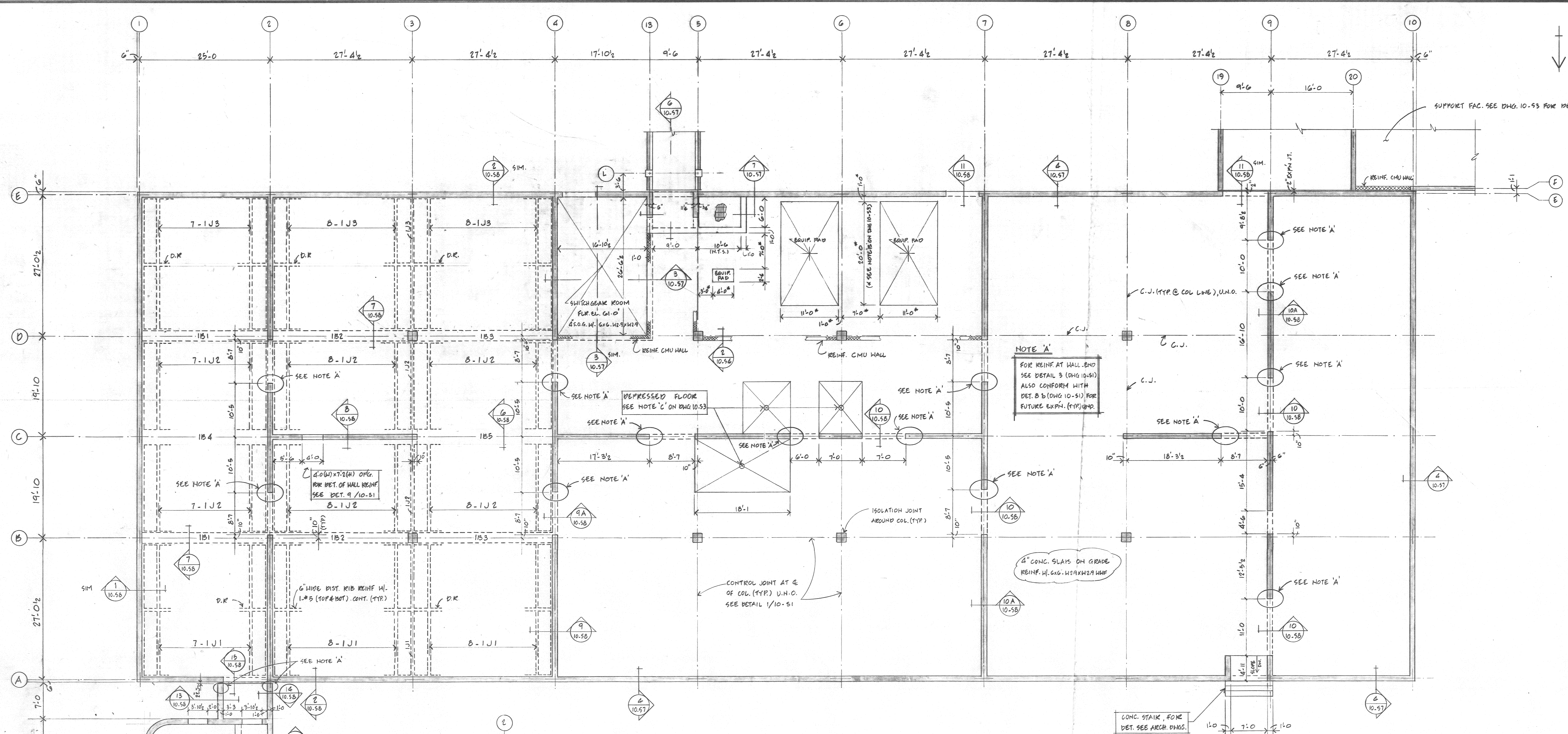
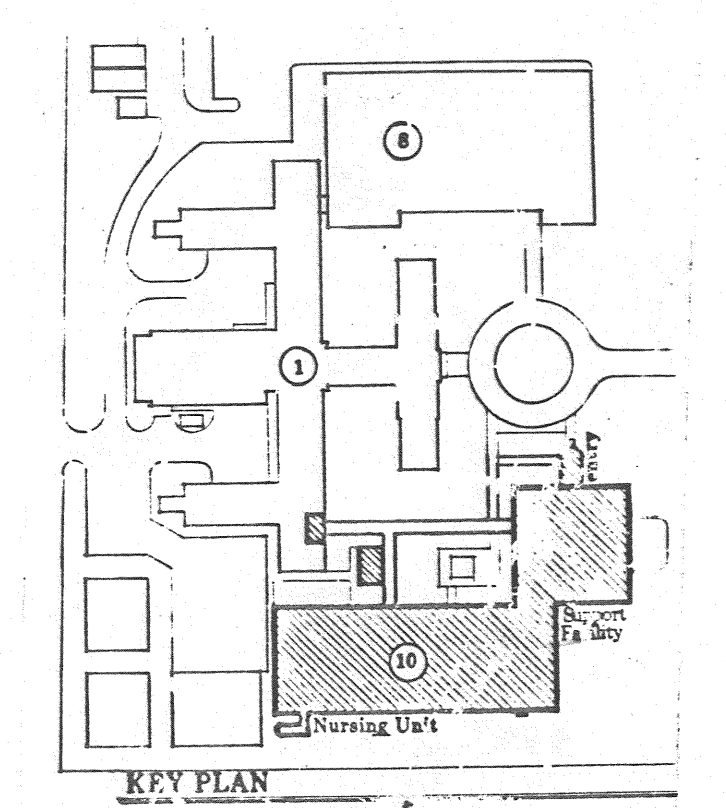
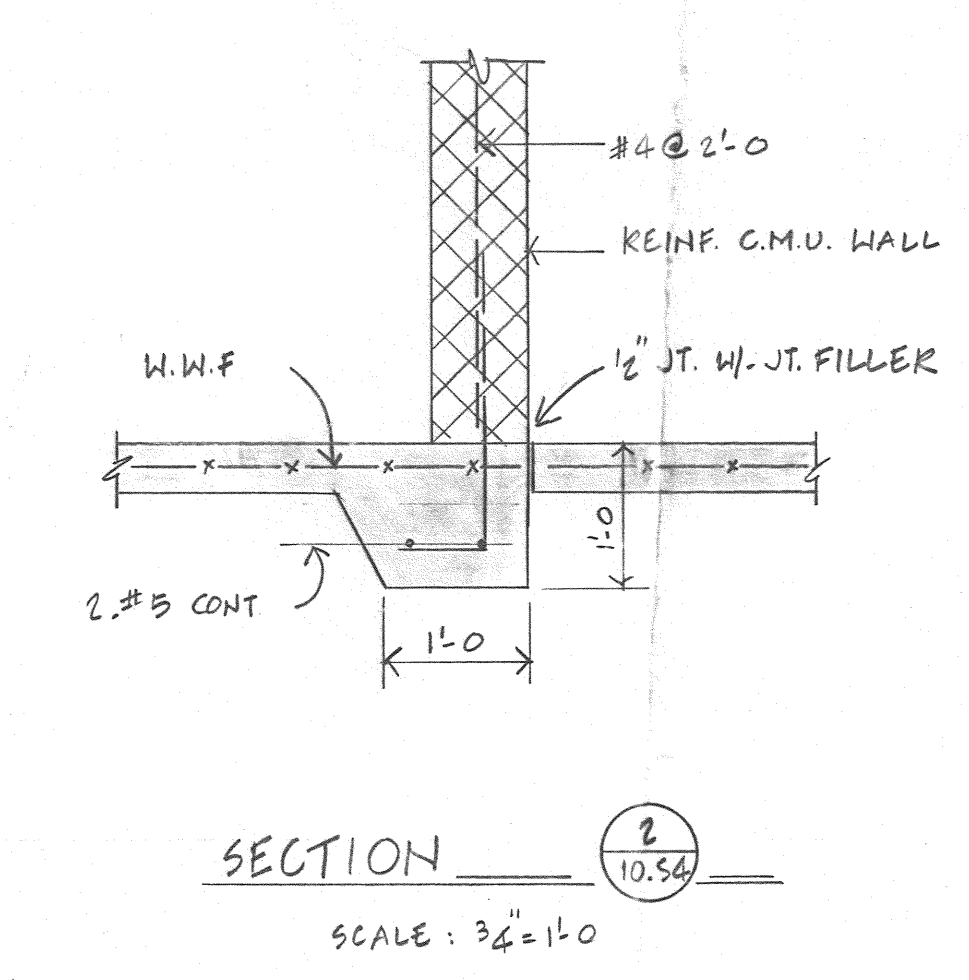
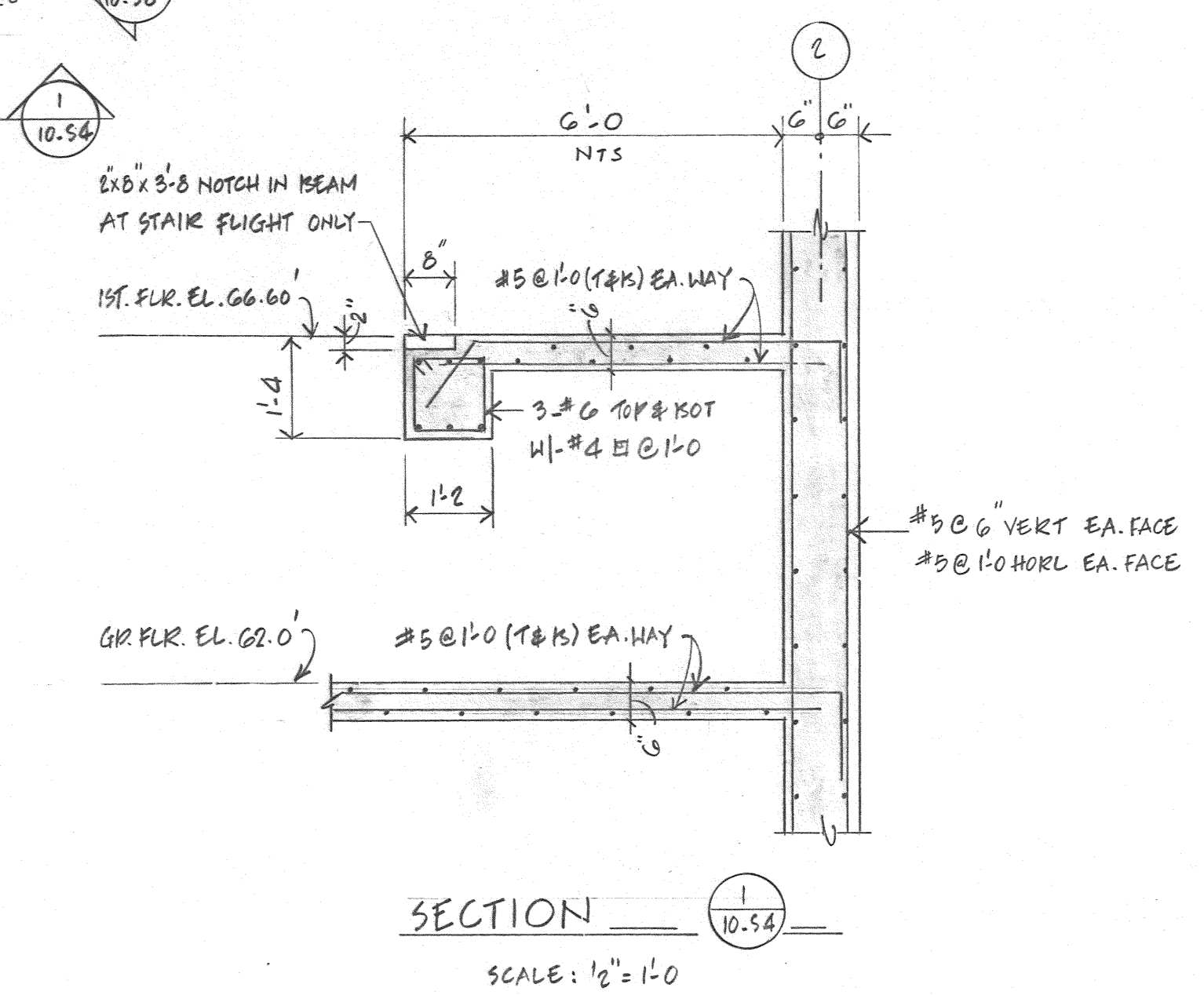


three eighths inch = one foot  
one quarter inch = one foot  
one eighth inch = one foot  
one half inch = one foot  
three quarters inch = one foot  
one inch = one foot  
one and one half inches = one foot  
three inches = one foot



FIRST FLOOR FRAMING PLAN  
SCALE: 1/8" = 1'-0"  
(FIN. FIRST FLR. EL. 66.60)



Revisions		Date	Drawing Title		Project Title	Date
			First Floor Framing Plan		60 Bed Nursing Home	6-17-81
			NHCU		Care Unit	654-03
Approved: Division Chief		Drawn	Building Number		Date	
J.S. Murrell		KKKS	Ten		10-84	
Approved: Service Director		Checked	Location		Dwg. Of	
Ed. Gmyr		LSH	VAMC Reno, Nevada			