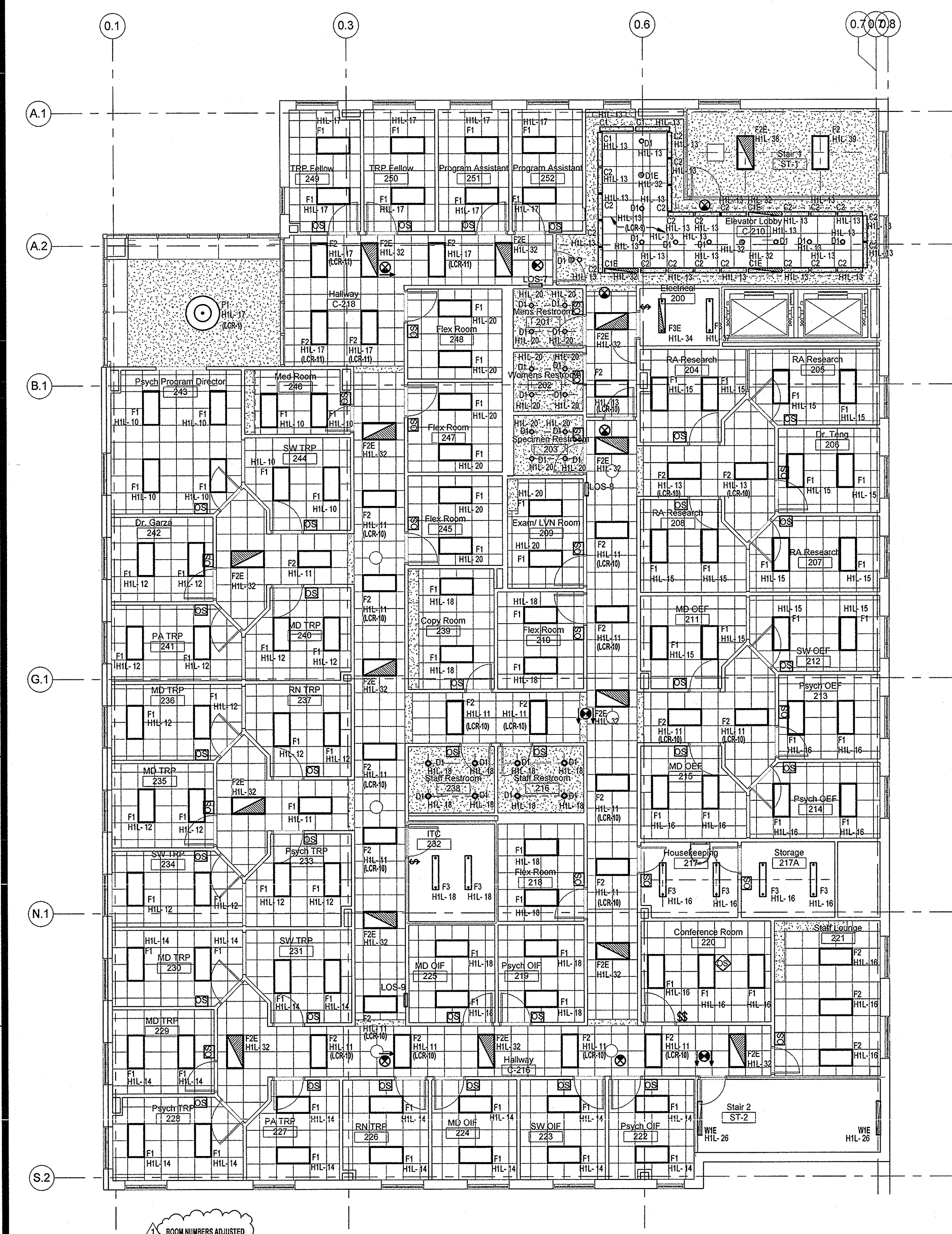
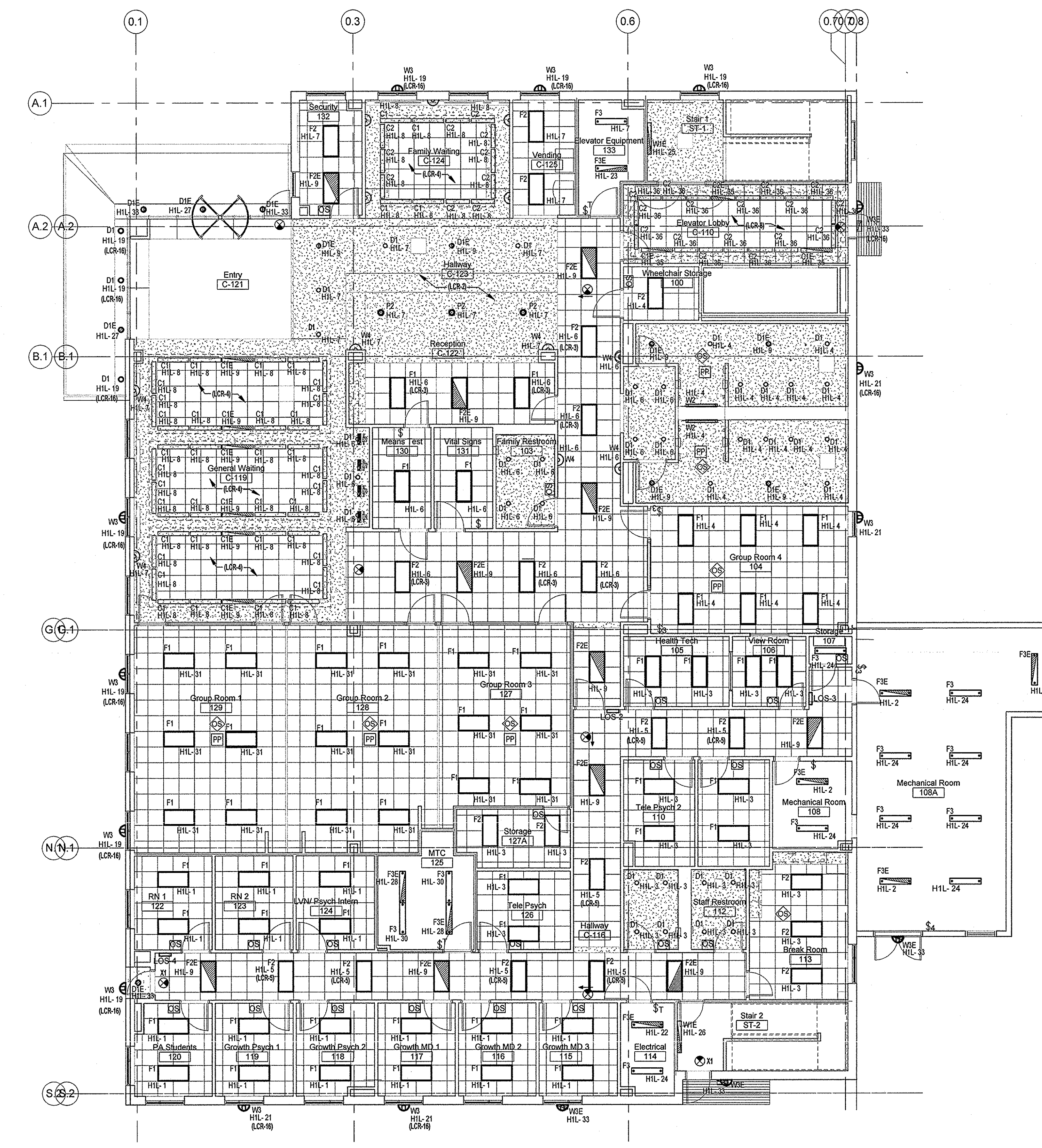


three inches = one foot  
one and one half inches = one foot  
one inch = one foot  
three quarters inch = one foot  
one half inch = one foot  
three eighths inch = one foot  
one quarter inch = one foot  
one eighth inch = one foot  
one sixteenth inch = one foot

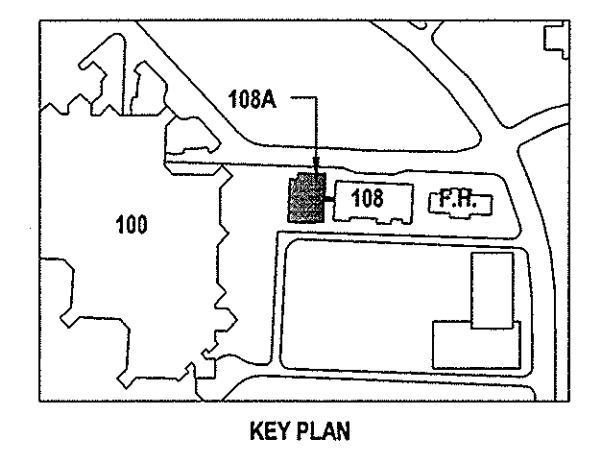


**F5 ELECTRICAL - LIGHTING PLAN - LEVEL 2**  
SCALE: 1/8" = 1'-0"



**F1 ELECTRICAL - LIGHTING PLAN - LEVEL 1**  
SCALE: 1/8" = 1'-0"

- GENERAL NOTES:**
1. REFER TO SHEET E-01 FOR SYMBOL LEGEND.
  2. REFER TO ELECTRICAL SHEET E-01 FOR LIGHTING FIXTURE SCHEDULE.
  3. CIRCUIT ALL EXIST SIGN LIGHTS ON LEVEL-1 TO "HIL-40".
  4. CONTRACTOR TO POSITION OCCUPANCY SENSOR DIRECTIONALLY, IN A MANNER THAT MAXIMIZES OPTIMUM COVERAGE AREA.
  5. OCCUPANCY SENSOR TO BE CONNECTED TO LINE SIDE OF POWER SOURCE.
  6. CHECK FIXTURE TYPE AGAINST CEILING OF EACH AREA AT SITE PRIOR TO ORDERING OF FIXTURE.
  7. WALL MOUNTED OCCUPANCY SENSOR SHALL BE DUAL SWITCH TYPE FOR BI-LEVEL LIGHTING CONTROL.



<b>CONSULTANTS:</b> STRUCTURAL <b>ROGERS MOORE ENGINEERS</b> 2411 Fountainsview, Suite 222 Houston, TX 77057 TEL: 832 342 3372 FAX: 281 582 5955 WALTER P. MOORE 1301 McKinney, Suite 1100 Houston, TX 77010 TEL: 713 630 7300 FAX: 713 630 7394 CIVIL <b>H2B, INC.</b> 1225 North Loop West, Suite 900 Houston, TX 77008 TEL: 713 864 2900 FAX: 713 583 1245 PARKING <b>WALTER P. MOORE</b> 1301 McKinney, Suite 1100 Houston, TX 77010 TEL: 713 630 7300 FAX: 713 630 7396 COMMUNICATIONS <b>4B TECHNOLOGY</b> 12600 Northborough Dr., Suite 290 Houston, TX 77067 TEL: 832 249 9379 FAX: 832 249 9756		<b>ARCHITECT/MEP ENGINEERS:</b> Firm Registration No. 958 Page Southerland Page, LLP J.E. WILCOXSON AUSTIN DALLAS DENVER HOUSTON WASHINGTON D.C. Abu Dhabi Doha Kuwait London <b>PageSoutherlandPage</b> ARCHITECTURE INTERIORS CONSULTING ENGINEERING <b>PAGE SOUTHERLAND PAGE, LLP</b> 1100 Louisiana Suite 1 Houston, Texas 77002 tel: 713 871 8484 fax: 713 871 8440 www.pspape.com		Drawing Title <b>ELECTRICAL - LIGHTING PLAN - LEVEL 1 &amp; LEVEL 2</b> Approved: Project Director		Project Title <b>Expansion &amp; Renovation of Building 108 for Mental Health</b> Project Abbreviation <b>Location Michael E. DeBakey Medical Center 2002 Holcombe Blvd, Houston, TX 77030</b> Date <b>06-15-2012</b> Checked <b>JDW</b> Drawn <b>CC</b>		Project Number <b>580-319</b> Building Number <b>108A</b> Drawing Number <b>108A-EL-101</b> Dwg. of 99		Office of Construction and Facilities Management Department of Veterans Affairs	
--	--	---	--	--	--	---	--	--	--	--	--