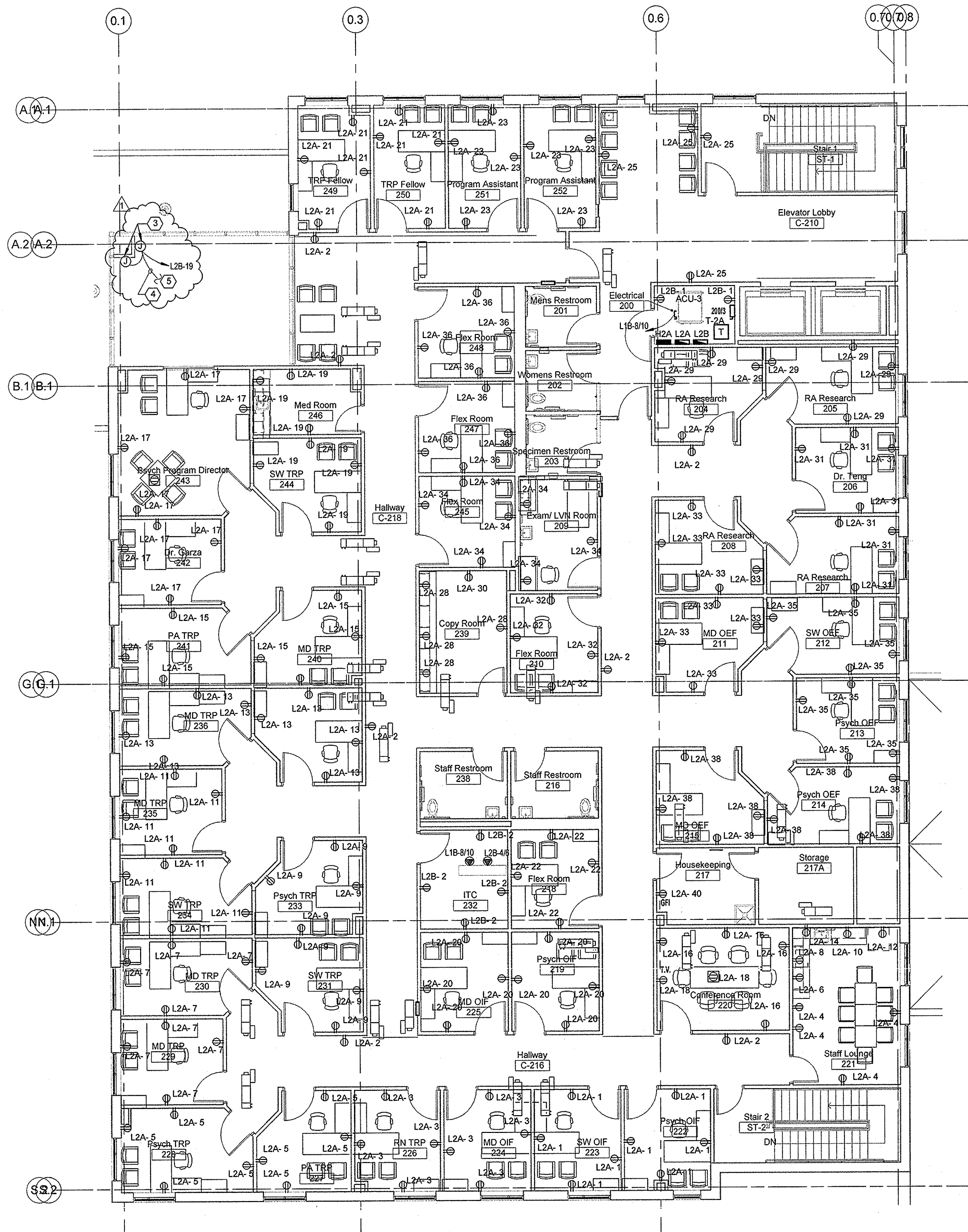
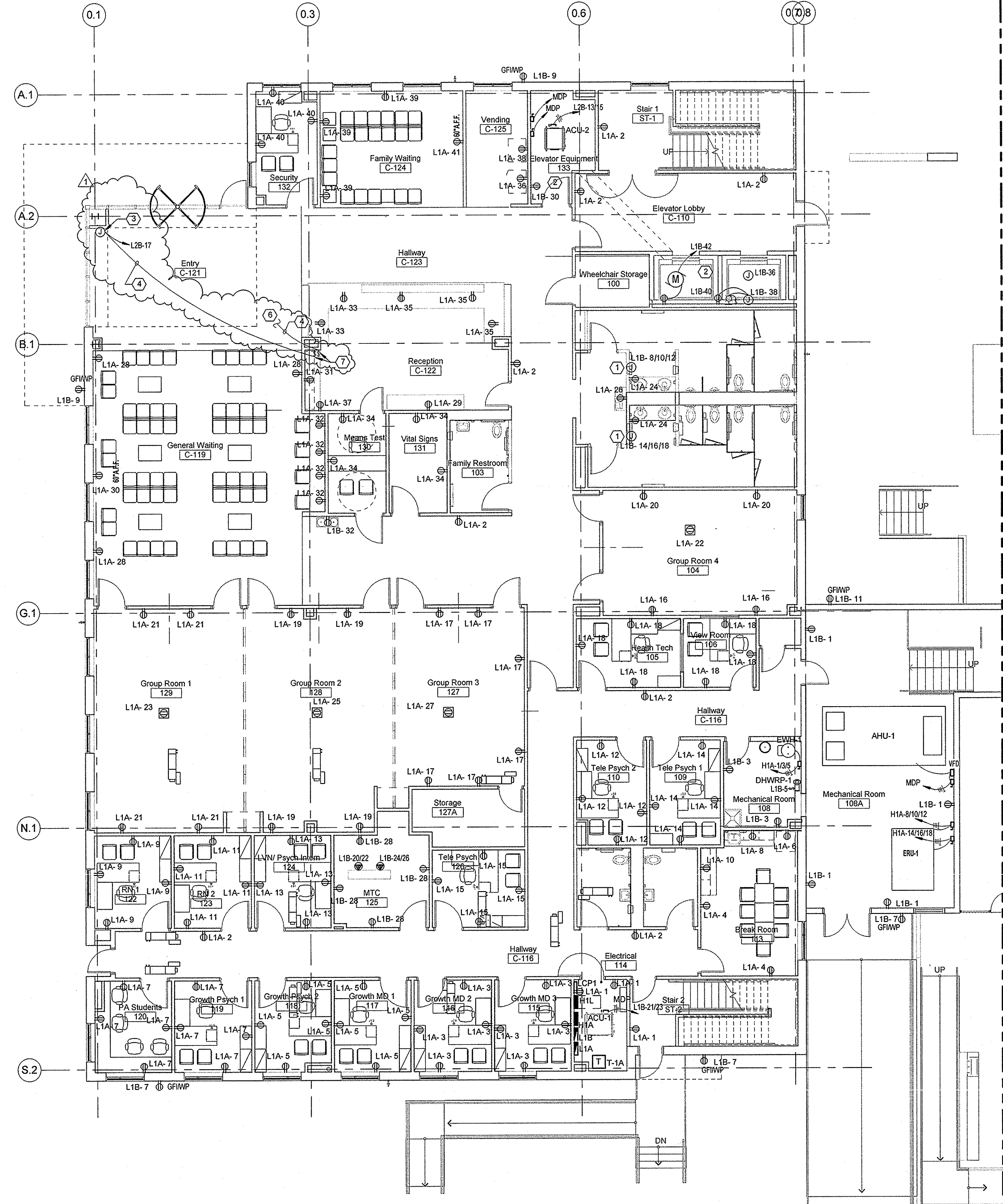


three inches = one foot  
one and one half inches = one foot  
one inch = one foot  
three quarters inch = one foot  
one half inch = one foot  
three eighths inch = one foot  
one quarter inch = one foot  
one eighth inch = one foot  
one sixteenth inch = one foot



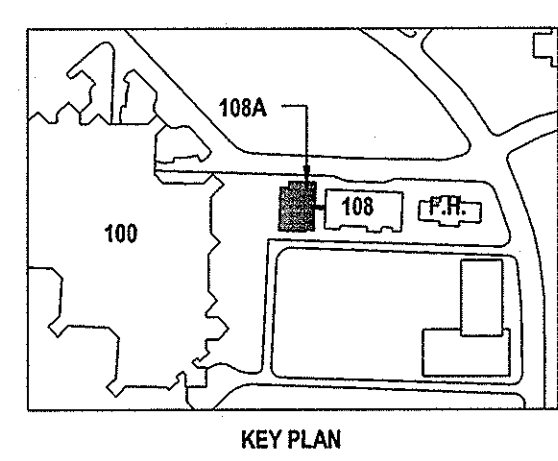
**F1 ELECTRICAL - POWER FLOOR PLAN - LEVEL 2**  
SCALE: 1/8" = 1'-0"



**F5 ELECTRICAL - POWER FLOOR PLAN - LEVEL 1**  
SCALE: 1/8" = 1'-0"

- ### GENERAL NOTES:
- REFER TO SHEET E-011 FOR SYMBOL LEGEND. REFER TO SHEET 108A-E-002 FOR GENERAL PROJECT AND ELECTRICAL NOTES.
  - COORDINATE WITH OTHER TRADES PRIOR TO BEGINNING WORK.
  - CONTRACTOR TO COORDINATE WITH CIVIL DRAWINGS FOR ADJACENT UTILITIES.
  - PROVIDE 3/4" CONDUIT FOR MECHANICAL EQUIPMENT CONTROLS AS REQUIRED.
  - ALL MATERIALS TO BE USED SHALL BE NEW AND OF THE APPROVED TYPE FOR THE LOCATION.
  - COORDINATE ALL DEVICE MOUNTING HEIGHTS WITH ARCHITECTURAL ELEVATIONS.
  - OTHER DISCIPLINES EQUIPMENT SHOWN FOR REFERENCE PURPOSE ONLY. COORDINATE FOR EXACT LOCATIONS.
  - ALL CONDUITS PASSING FROM ROOM TO ROOM SHALL BE PROVIDED WITH SLEEVES AND SEALED TO PREVENT PASSAGE OF AIR/MOISTURE.
  - VERIFY LOCATION AND RATING OF ALL MECHANICAL EQUIPMENT AT SITE AND AS PER MECHANICAL PLANS AND APPROVED SUBMITTALS PRIOR TO EXECUTION OF ELECTRICAL WORK.
  - PROVIDE PULL STRINGS IN ALL CONDUITS.
  - ALL RECEPTACLES ON ROOF LEVEL TO BE GFCI TYPE WITH WEATHERPROOF WHOLE IN USE COVER.
  - ALL RECEPTACLES MOUNTING HEIGHTS ARE 18" AFF UNLESS NOTED OTHERWISE.
  - WHERE GYP BOARD CEILINGS ARE INSTALLED, CONTRACTOR SHALL LOCATE JUNCTION BOXES AND OTHER ELECTRICAL DEVICES ABOVE THE CEILING TO AVOID AN ACCESSIBLE CEILING.
  - REFER TO TELECOM DRAWINGS FOR LOCATIONS OF BACK BOXES REQUIRED FOR NURSE CALL DEVICES, TELEPHONE AND DATA OUTLETS, SECURITY CAMERAS, PHYSIOLOGICAL MONITORS, CARD READERS, INTERCOM AND SECURITY NETWORKS. FURNISH AND INSTALL BACK BOXES AND CONDUITS STUBBED UP ABOVE ACCESSIBLE CEILING. REFER TO TELECOMMUNICATION PLANS FOR BACK BOX AND CONDUIT SIZES REQUIRED.
  - ALL 120V, SINGLE PHASE, 15 AND 20 AMP RECEPTACLES INSTALLED IN LOCKER ROOMS, BATHROOMS, KITCHENS, ROOF TOPS, OUTDOORS, AND WITHIN 6' OF THE OUTSIDE EDGE OF SINKS SHALL BE GFCI TYPE, UNLESS NEC 210.8(D) EXCEPTION 2 FOR PATIENT CARE AREAS APPLIES.
  - ALL ELECTRICAL EQUIPMENT AND MATERIAL TO BE APPROVED, LISTED, LABELED, IDENTIFIED AND INSTALLED PER RECOGNIZED ELECTRICAL TESTING LABORATORY.
  - FIRE WALL: DO NOT INSTALL RECEPTACLES, TELEPHONE, DATA OUTLETS, ETC. BACK-TO-BACK IN FIREWALL PARTITION OR WITHIN THE SAME SPACE ENCLOSED BY TWO ADJACENT STUDS. ALSO APPLY TO ALL CORRIDOR WALLS.
  - PROVIDE 120V CIRCUITS FOR VAV'S. CONTROL POWER. REFERENCE MECHANICAL FLOOR PLAN DRAWINGS FOR VAV LOCATIONS. PROVIDE TWO 120V PER FLOOR. L1B-4/L2 FOR FIRST FLOOR. AND L2B-4/L2 FOR VAV'S ON SECOND FLOOR.

- ### KEYED NOTES
- | NUMBER | DESCRIPTION  |
|--------|--|
| 1      | PROVIDE J-BOX AND CONNECTION TO HAND DRIVER.   |
| 2      | REFERENCE ELEVATOR RELATED DETAILS ON SHEET 108A-E-003 FOR ADDITIONAL INFORMATION.   |
| 3      | 120V, 2.5AMP SUPPLY TO EACH MESOSHADES. VERIFY REQUIREMENTS PRIOR TO ROUGH-IN.   |
| 4      | 5 #12, 18 1/2" DIA, 3/4" C. VERIFY REQUIREMENTS PRIOR TO ROUGH-IN.   |
| 5      | DOWN TO SWITCH AT RECEPTION AREA - LEVEL 1.  |
| 6      | RUN UP TO MESOSHADES MOTORS AT SECOND LEVEL.   |
| 7      | PROVIDE AND INSTALL (3) GPO SWITCHES FOR CONTROL OF SHADES. VERIFY REQUIREMENTS PRIOR TO ROUGH-IN. ONE SWITCH FOR BOTH SHADES AT SECOND LEVEL AND ONE SWITCH FOR SHADE AT FIRST LEVEL. |



ISSUE FOR CONSTRUCTION  
FULLY SPRINKLERED

<b>CONSULTANTS:</b> STRUCTURAL <b>RODGERS MOORE ENGINEERS</b> 2411 Fountainside, Suite 222 Houston, TX 77057 TEL: 832 342 3372 FAX: 281 582 5955 <b>WALTER P. MOORE</b> 1301 McKinney, Suite 1100 Houston, TX 77010 TEL: 713 630 7300 FAX: 713 630 7394 CIVIL <b>H2B, INC.</b> 1225 North Loop West, Suite 900 Houston, TX 77008 TEL: 713 864 2900 FAX: 713 583 1245 PARKING <b>WALTER P. MOORE</b> 1301 McKinney, Suite 1100 Houston, TX 77010 TEL: 713 630 7300 FAX: 713 630 7396 COMMUNICATIONS <b>4B TECHNOLOGY</b> 12600 Northborough Dr., Suite 290 Houston, TX 77067 TEL: 832 249 9379 FAX: 832 249 9756		<b>ARCHITECT/MEP ENGINEERS:</b> Firm Registration No. 568 Page Southerland Page, LLP  <b>PageSoutherlandPage</b> ARCHITECTURE INTERIORS CONSULTING ENGINEERING <b>PAGE SOUTHERLAND PAGE, LLP</b> 1100 Louisiana Suite 1 Houston, Texas 77002 tel: 713 871 8484 fax: 713 871 8440 www.pspaec.com		Drawing Title <b>ELECTRICAL - POWER PLAN - LEVEL 1 &amp; LEVEL 2</b> Approved: Project Director		Project Title <b>Expansion &amp; Renovation of Building 108 for Mental Health</b> Project Abbreviation <b>Location Michael E. DeBakey Medical Center 2002 Holcombe Blvd, Houston, TX 77030</b> Date <b>06-15-2012</b> Checked <b>CC</b> Drawn <b>JDW</b>		Project Number <b>580-319</b> Building Number <b>108A</b> Drawing Number <b>108A-EP-101</b> Dwg. of 99		<b>Office of Construction and Facilities Management</b> <b>Department of Veterans Affairs</b>	
---	--	---	--	---	--	---	--	--	--	--	--