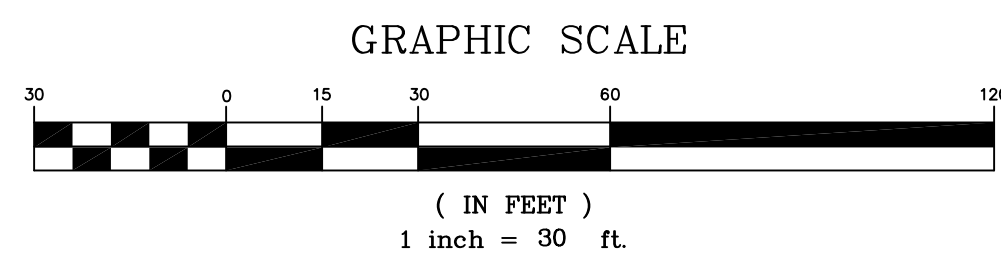
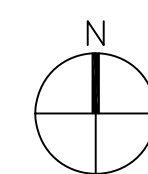


LEGEND:

- EXISTING PROPERTY LINE
- EXISTING FENCE
- EXISTING WOODLINE/VEGETATION
- EXISTING WATERLINE
- EXISTING GAS LINE
- EXISTING SANITARY SEWER FORCE MAIN
- EXISTING OVERHEAD UTILITIES
- ITEM TO BE REMOVED/DEMOLISHED
- SILT FENCE
- EXISTING SPOT ELEVATION
- EXISTING CONTOUR
- EXISTING ASPHALT ROADWAY
- SOIL BORING LOCATION



UNITED STATES NAVY
PARCEL #31229-000-000
O.R. BOOK 47 PG 141

KCI TBM#6
N:424060.06
E:1575062.77
ELEV:18.50

INSTALL SILT FENCE
EROSION CONTROL
(F1/CD501)

AREA TO REMAIN
UNDISTURBED

REMOVE EX. TREES
/ VEGETATION

REMOVE EX. 15"
PINE

SMALL TREES AND BRUSH
INSTALL SILT FENCE
EROSION CONTROL
(F1/CD501)

REMOVE EX. ASPHALT
& BASE

LIMITS OF NAVY
DEMOLITION CONTRACT
(THIS SHEET ONLY) N.I.C.

REMOVE EX. TREES
/ VEGETATION

EX. 12", 14" & 16"
OAK TREES TO REMAIN,
INSTALL TREE PROTECTION
BARRICADE (D4/CD501)

CONST. 20' WIDE 50'
LONG CONSTRUCTION ENTRANCE
(D5/CD501)

REMOVE EX. TREES
/ VEGETATION

REMOVE EX. ASPHALT
& BASE

UNITED STATES NAVY
PARCEL #31229-000-000
O.R. BOOK 47 PG 141

INSTALL SILT FENCE
EROSION CONTROL
(F1/CD501)

NAVAL CONC.
MONUMENT CO-51
N:423508.71
E:1575022.34
ELEV:14.59

MAGNOLIA BEACH ROAD

COUNTY ROAD 392-B
60' PUBLIC R/W

CONSULTANTS:

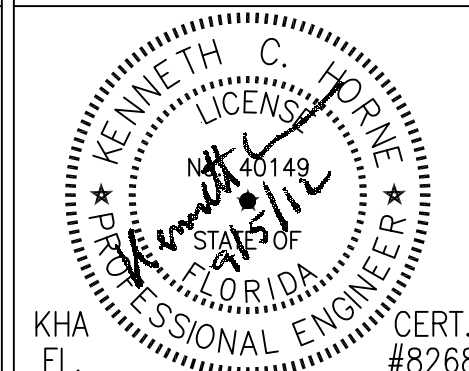
CIVIL:
KENNETH HORNE & ASSOCIATES
7201 NORTH 9TH AVENUE, STE. 6
PENSACOLA, FLORIDA 32504
PH: (850) 471-9005
FX: (850) 471-0093

COMM/DES:
SCHMIDT CONSULTING GROUP, INC.
40 S. PALAFOX PLACE, STE. 300
PENSACOLA, FLORIDA 32502
PH: (850) 438-0050
FX: (850) 432-8631

SURVEYORS:
KCI TECHNOLOGIES, INC.
10401 HIGHLAND MANOR DRIVE, SUITE 120
TAMPA, FLORIDA 33610
PH: (813) 740-2300

LANDSCAPE ARCHITECT:
CSA GROUP, INC.
6300 PICCADILLY SQUARE DRIVE
MOBILE, ALABAMA 36609
PH: (251) 344-4023
FX: (251) 344-4052

ARCHITECTURE:
BULLOCK TICE ASSOCIATES, INC.
909 EAST CERVANTES STREET
PENSACOLA, FL 32501
PH: (850) 434-5444
FX: (850) 432-5208



ARCHITECT/ENGINEERS:



BES DESIGN/BUILD, LLC
766 Middle St, Fairhope, AL 36532
Phone: 251.990.5778 Fax: 251.990.3716

Drawing Title

DEMOLITION PLAN

Approved Project Director

Project Title

PANAMA CITY
JOINT OUTPATIENT CLINIC
VA GULF COAST HEALTH CARE

Location

PANAMA CITY, FLORIDA

Date

SEPTEMBER 5, 2012

Checked

KCH

Drawn

LPR

Project Number

520-326

Building Number

-

Drawing Number

CD101

Dwg 1 of 21

Office of
Construction
and Facilities
Management



FINAL SUBMISSION