

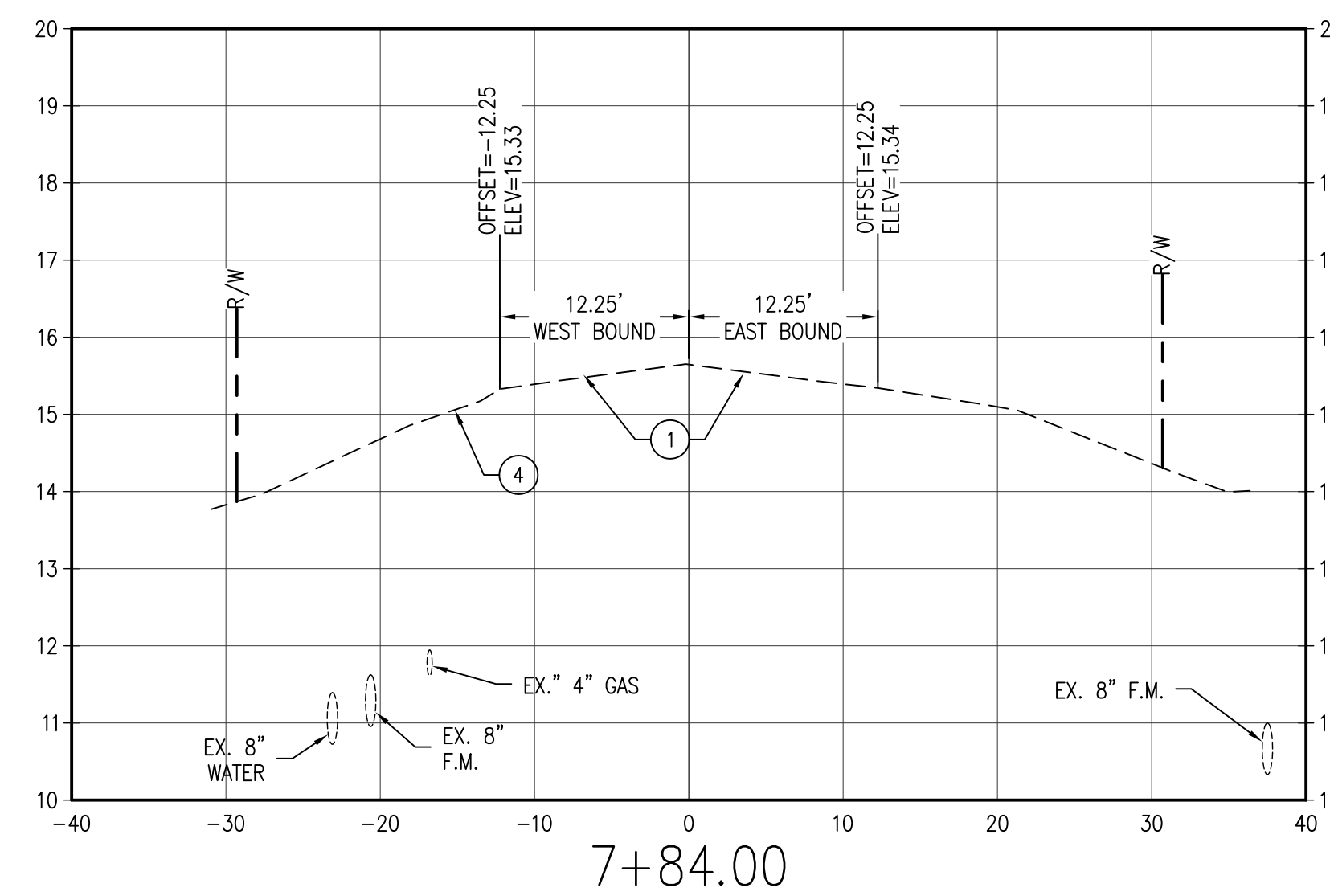
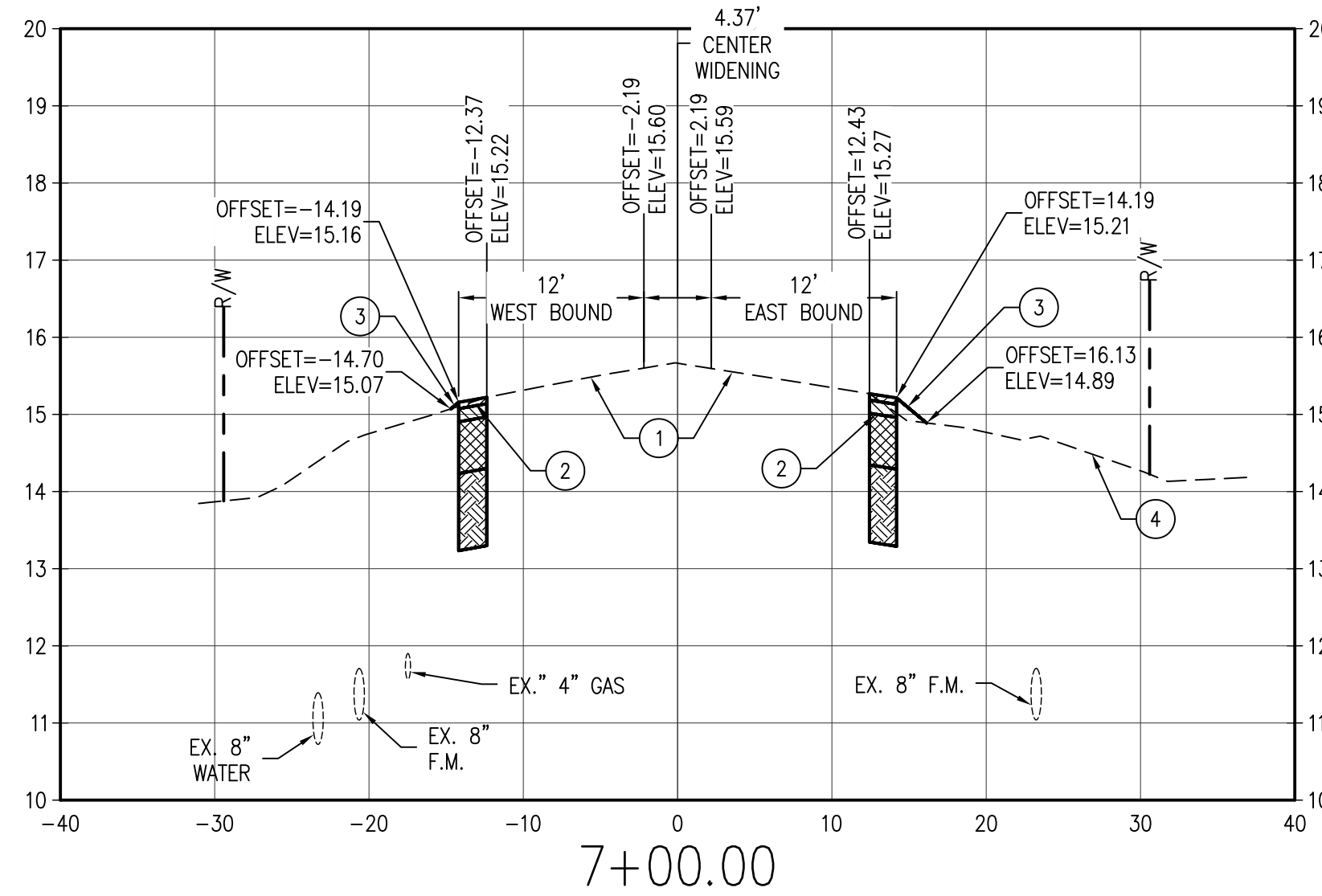
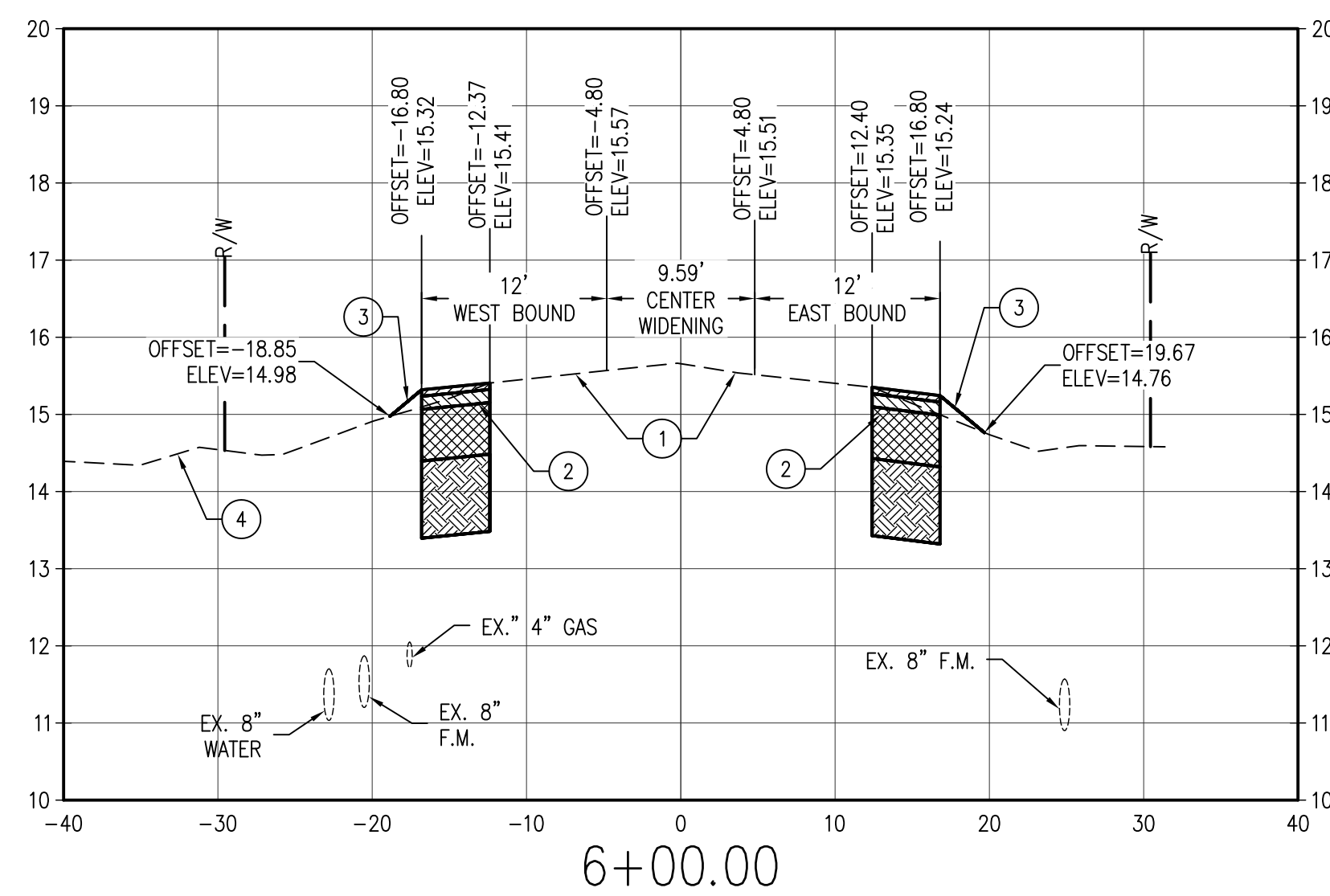
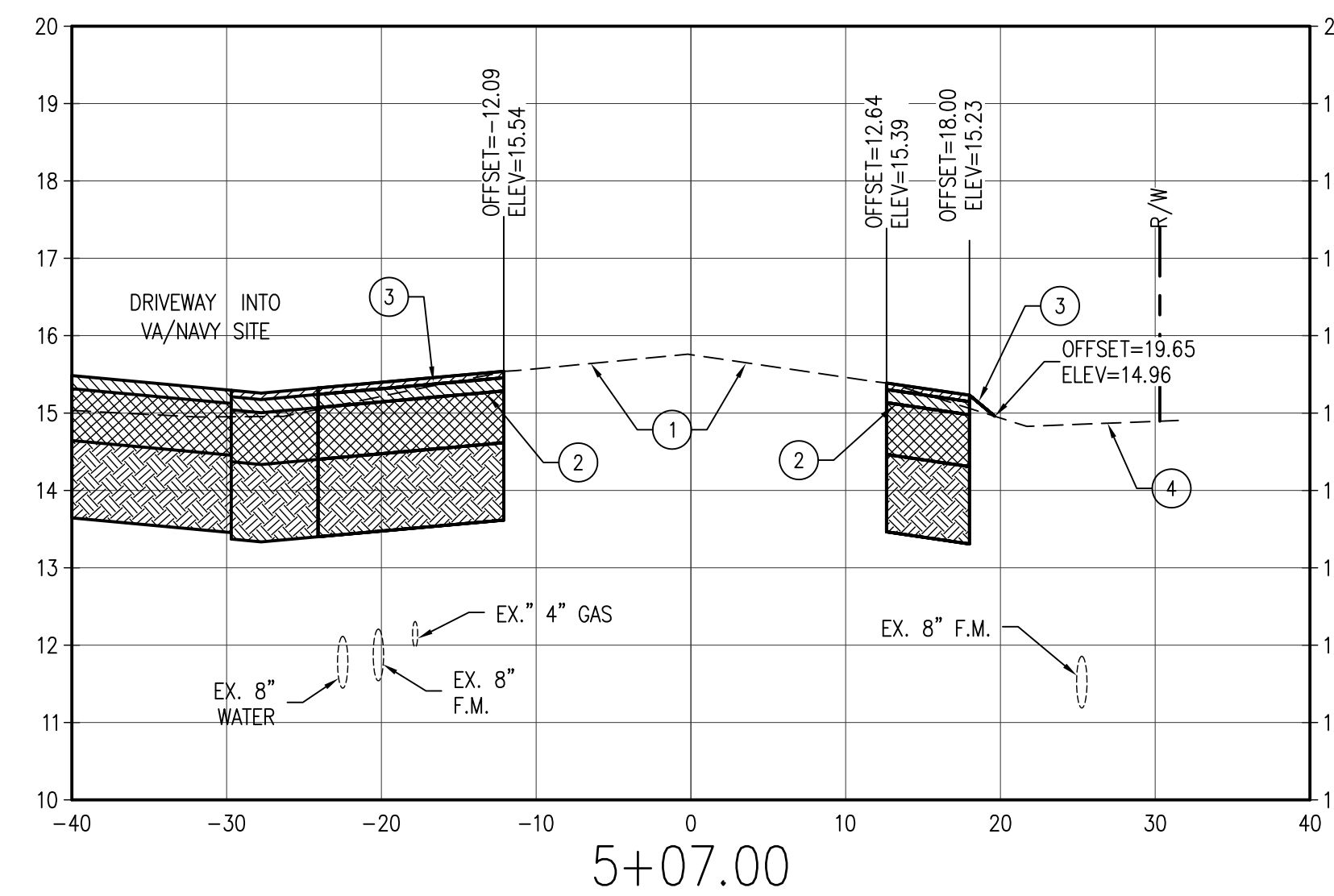
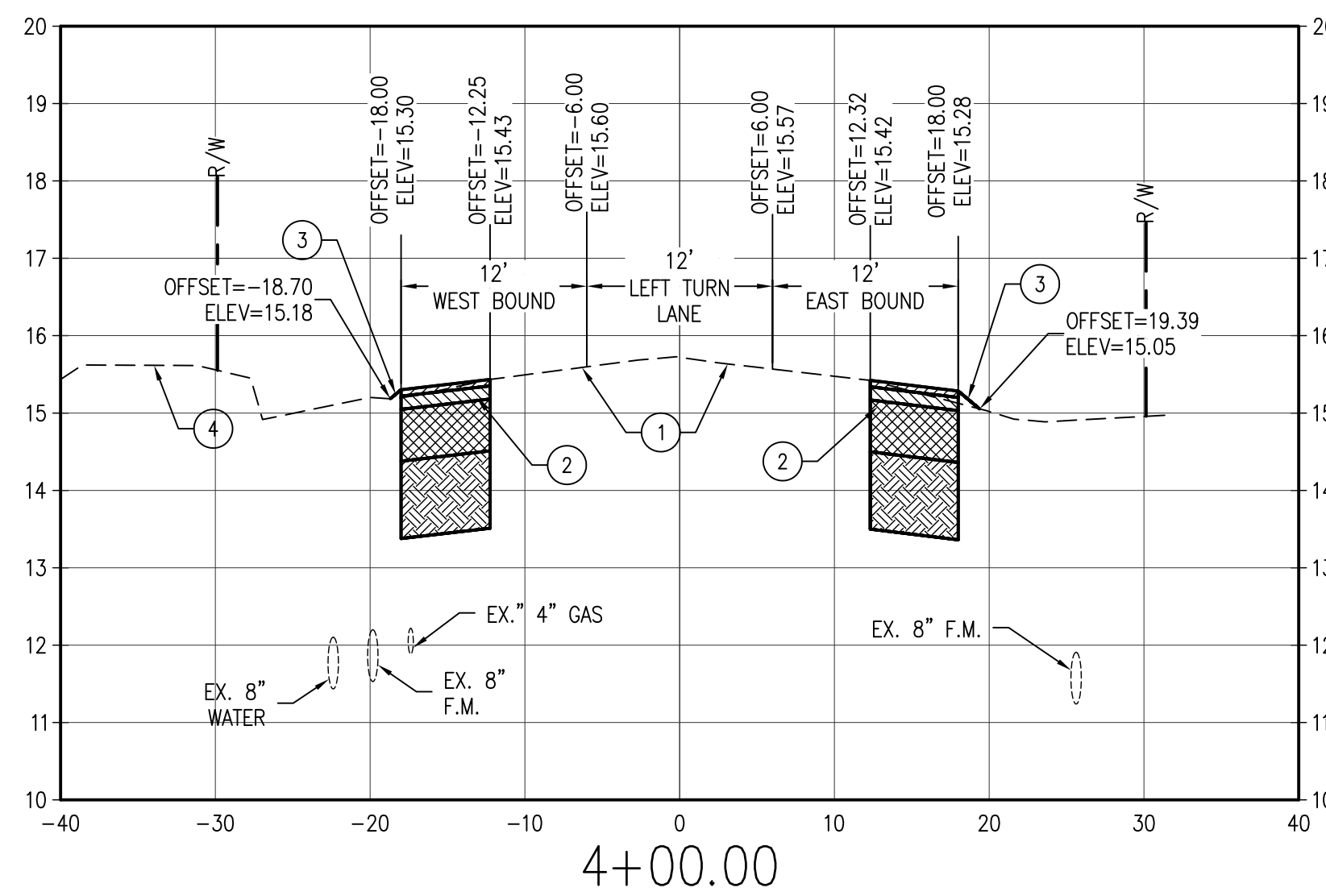
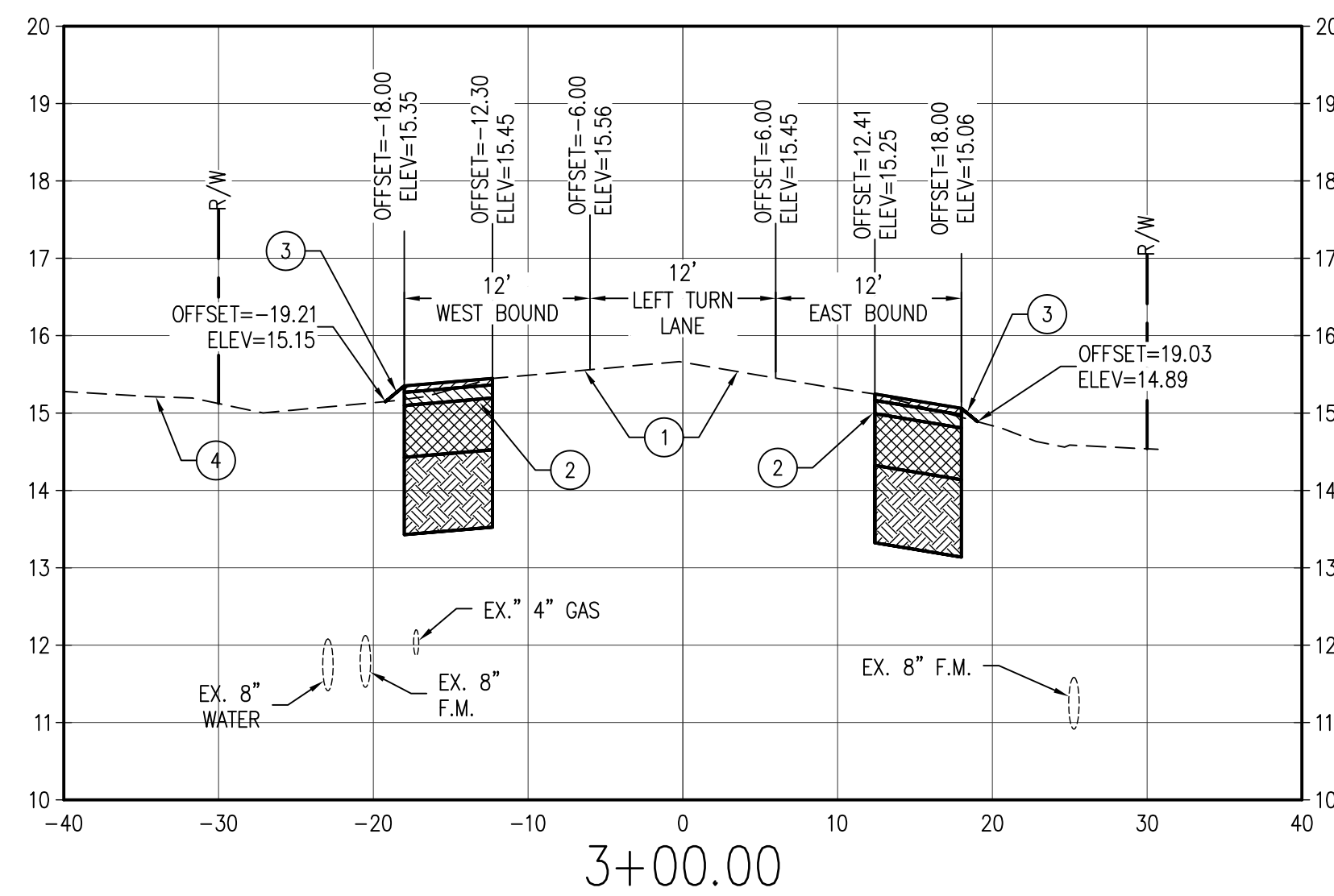
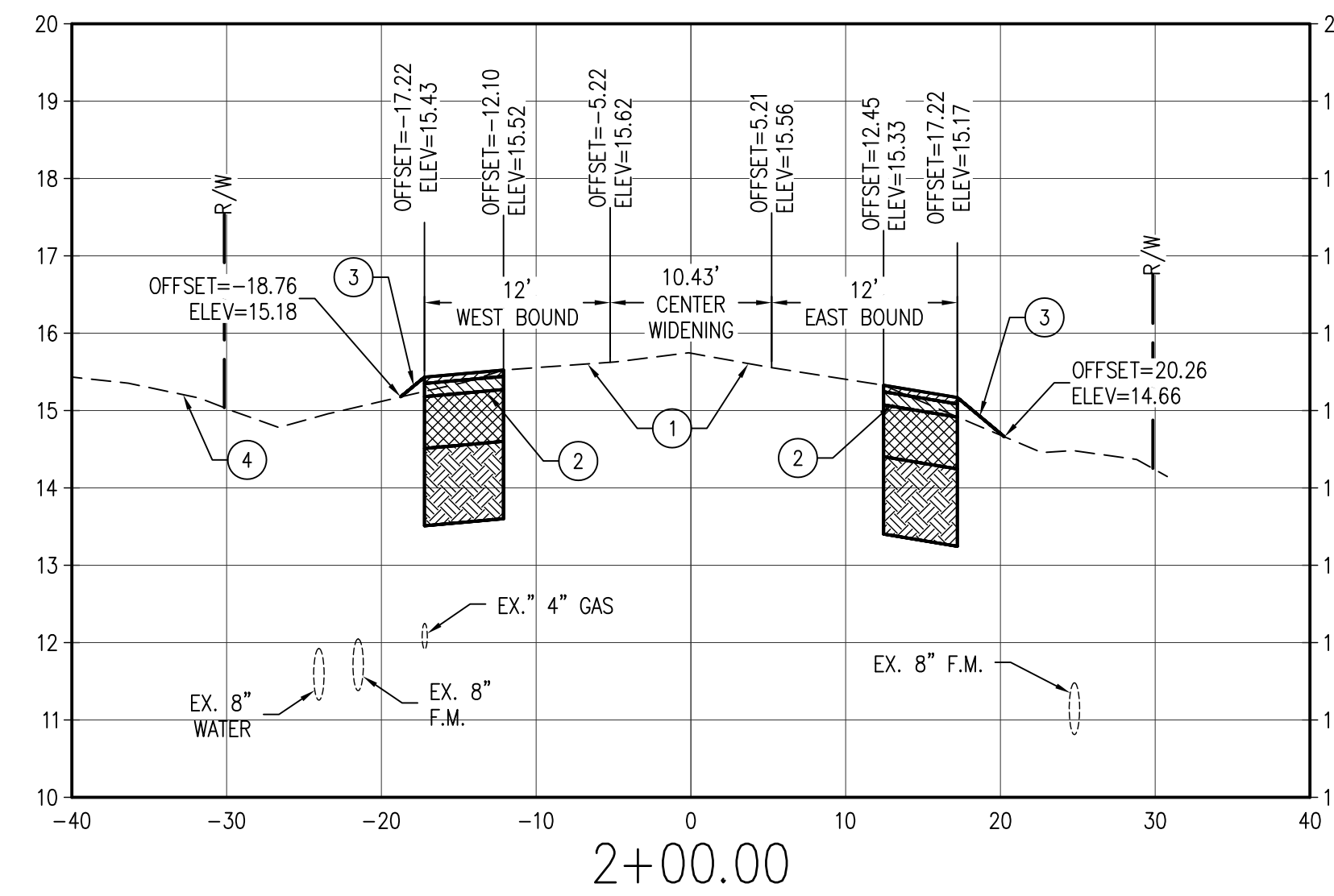
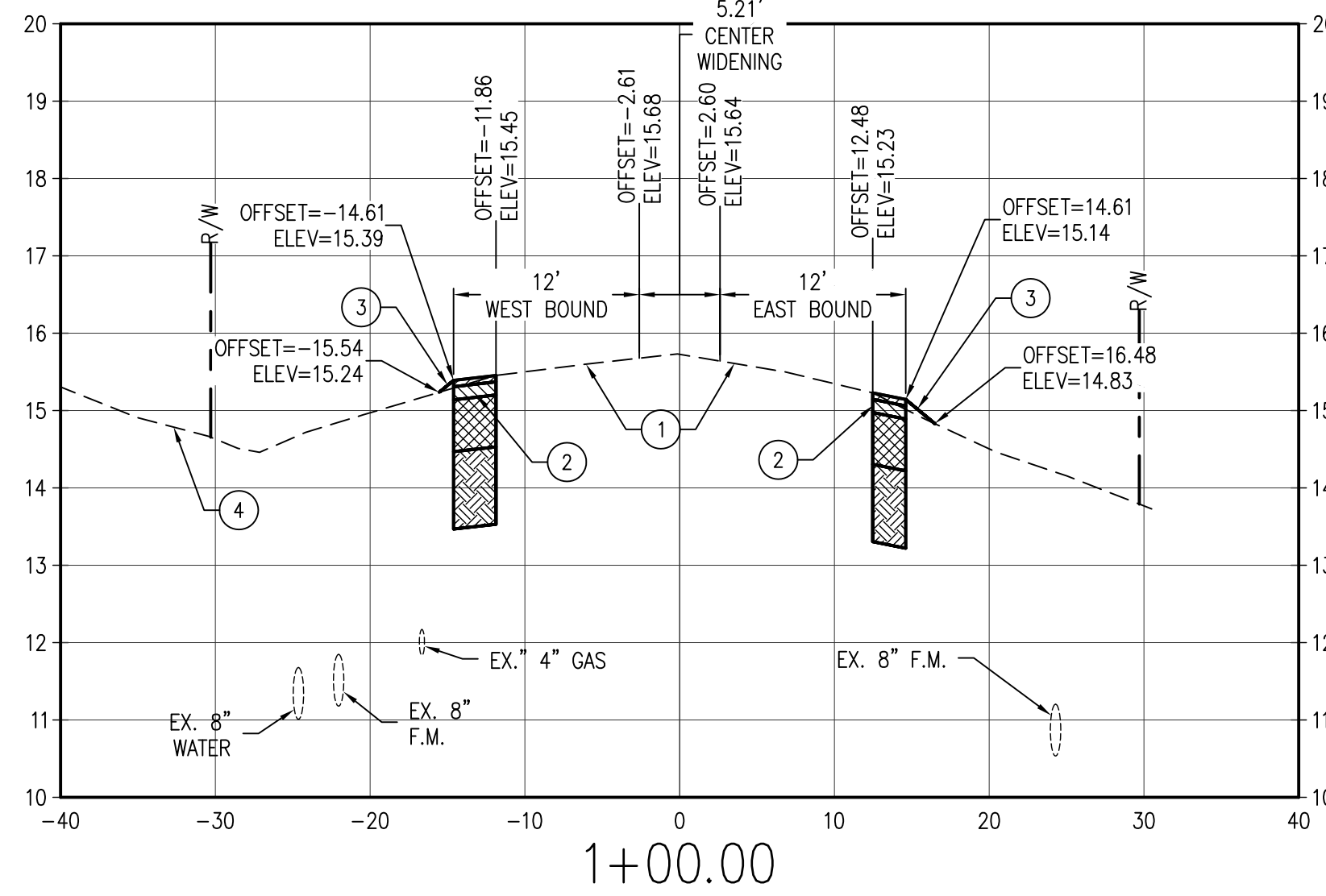
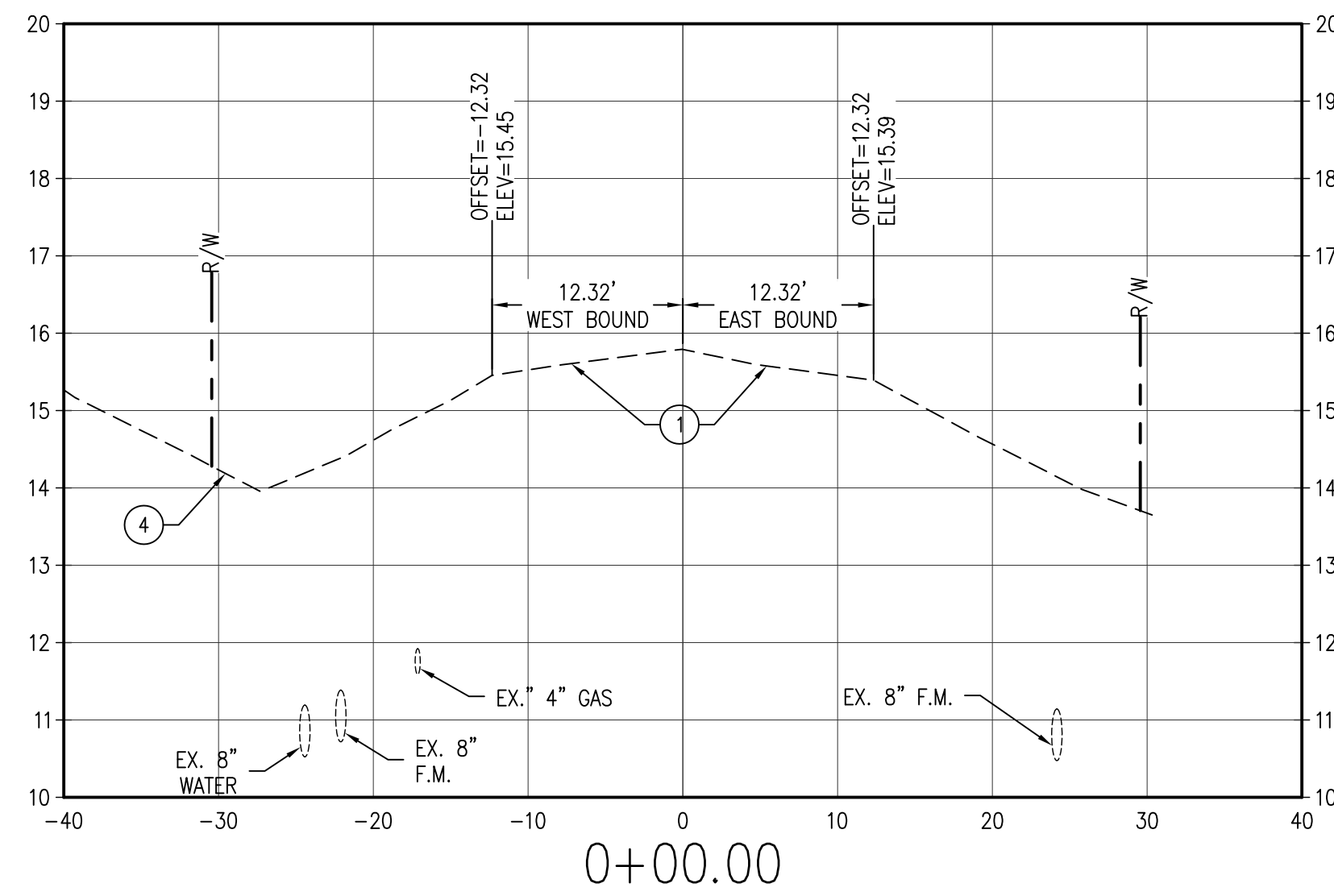
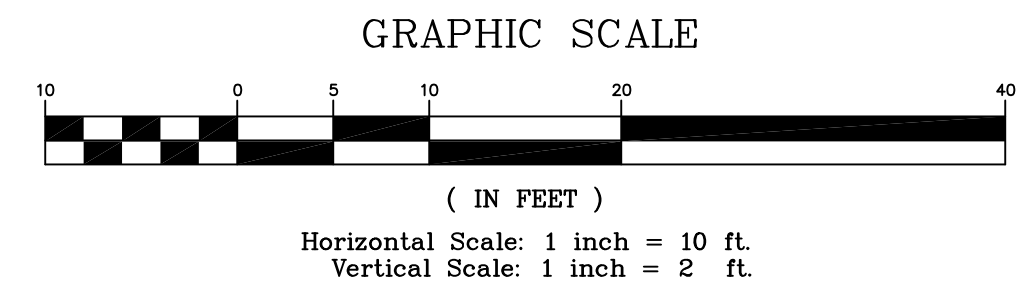
three inches = one foot
one inch = one foot
one half inch = one foot
three quarters inch = one foot
one quarter inch = one foot
one eighth inch = one foot
one sixteenth inch = one foot

CROSS SECTION KEY NOTES

1. MILL 1" EXISTING WEARING COURSE, OVERLAY WITH 1" FDOT SP-9.5, MATCH EXISTING PAVEMENT CROSS SLOPE.
2. CONSTRUCT ADDITIONAL PAVEMENT AS SHOWN. MATCH EXISTING CROSS SLOPE. NEW PAVEMENT SECTION TO BE 1" FDOT SP-9.5 OVER 2" FDOT TYPE SP-12.5 (ADD TACK COAT .02/GAL/SY ON EACH ASPHALT LIFT), OVER 8" GRADED AGGREGATE (FDOT SPEC 204) OVER 12" COMPACTED/STABILIZED SUBGRADE. (E1/CS-501)
3. TIE TO EXISTING GRADE @ 6:1 SIDE SLOPE TYPICAL. SOD DISTURBED AREAS.
4. EXISTING GRADE.

NOTES

1. EXISTING UTILITY VERTICAL ELEVATION IS APPROXIMATE ONLY.
2. NO WORK SHALL BE PERFORMED WITHIN THE RIGHT-OF-WAY UNTIL THE PROPER MAINTENANCE OF TRAFFIC IS IN PLACE ACCORDING TO THE APPROPRIATE FDOT ROADWAY AND TRAFFIC DESIGN STANDARDS 600 SERIES INDEX. THE MAINTENANCE OF TRAFFIC SETUP SHALL BE DONE BY A CERTIFIED WORKSITE TRAFFIC SUPERVISOR.



CONSULTANTS:

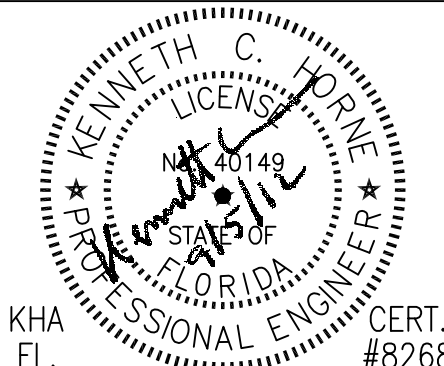
CIVIL:
KENNETH HORNE & ASSOCIATES
7201 NORTH 9TH AVENUE, STE. 6
PENSACOLA, FLORIDA 32504
PH: (850) 471-9005
FX: (850) 471-0093

COMM/DS:
SCHMIDT CONSULTING GROUP, INC.
40 S. PALAFOX PLACE, STE. 300
PENSACOLA, FLORIDA 32502
PH: (850) 438-0050
FX: (850) 432-8631

SURVEYORS:
KCI TECHNOLOGIES, INC.
10401 HIGHLAND MANOR DRIVE, SUITE 120
TAMPA, FLORIDA 33610
PH: (813) 740-2300

LANDSCAPE ARCHITECT:
CSA GROUP, INC.
6300 PICCADILLY SQUARE DRIVE
MOBILE, ALABAMA 36609
PH: (251) 344-4023
FX: (251) 344-4052

ARCHITECTURE:
BULLOCK TICE ASSOCIATES, INC.
909 EAST CERVANTES STREET
PENSACOLA, FL 32501
PH: (850) 434-5444
FX: (850) 432-5208



ARCHITECT/ENGINEERS:



BES DESIGN/BUILD, LLC
766 Middle St, Fairhope, AL 36532
Phone: 251.990.5778 Fax: 251.990.3716

Drawing Title
MAGNOLIA BEACH ROAD
SECTIONS

Approved Project Director

Project Title
PANAMA CITY
JOINT OUTPATIENT CLINIC
VA GULF COAST HEALTH CARE

Location
PANAMA CITY, FLORIDA

Date
SEPTEMBER 5, 2012

Checked
KCH

Drawn
LRR

Project Number
520-326

Building Number
-

Drawing Number

CG111
Dwg 20 of 21

Office of
Construction
and Facilities
Management

