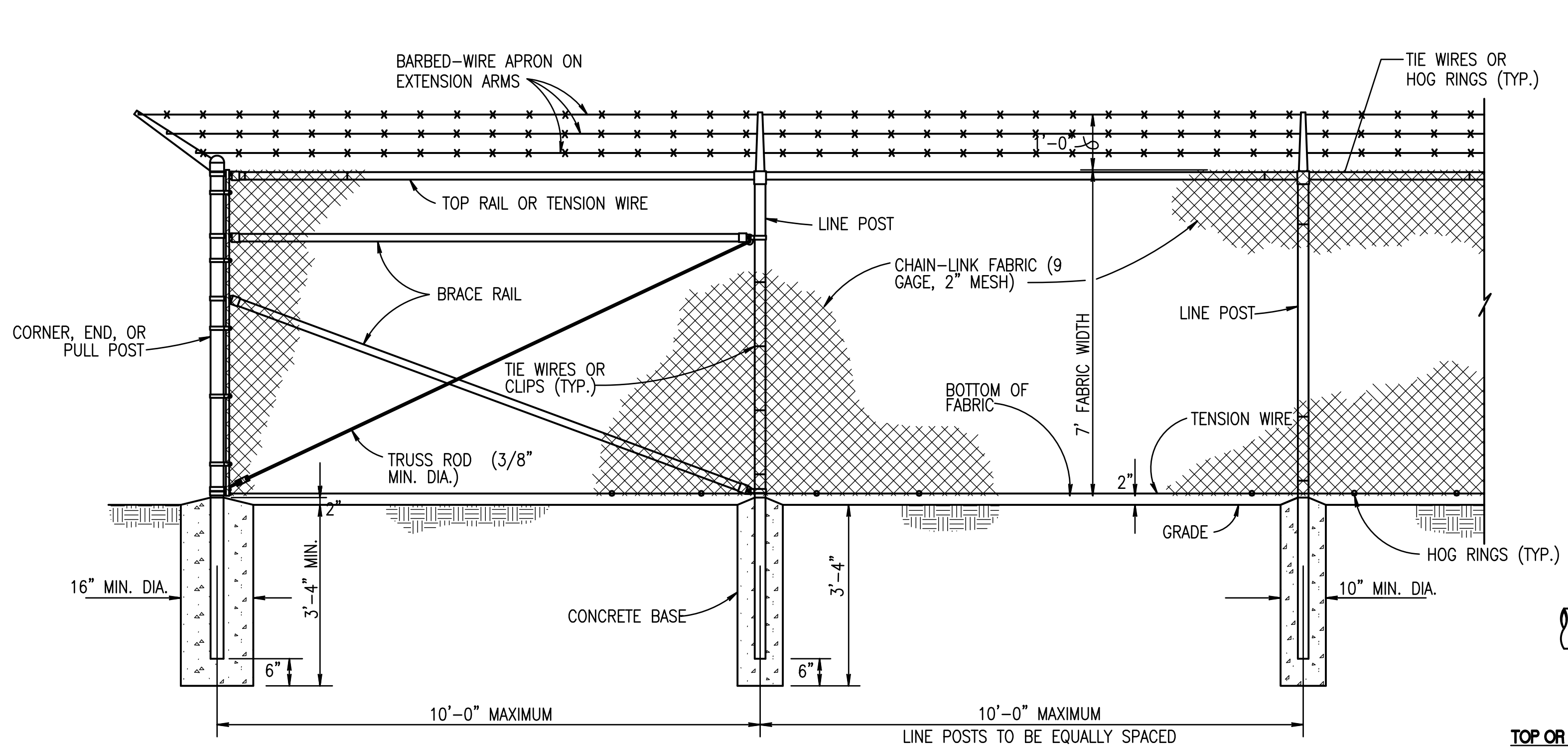
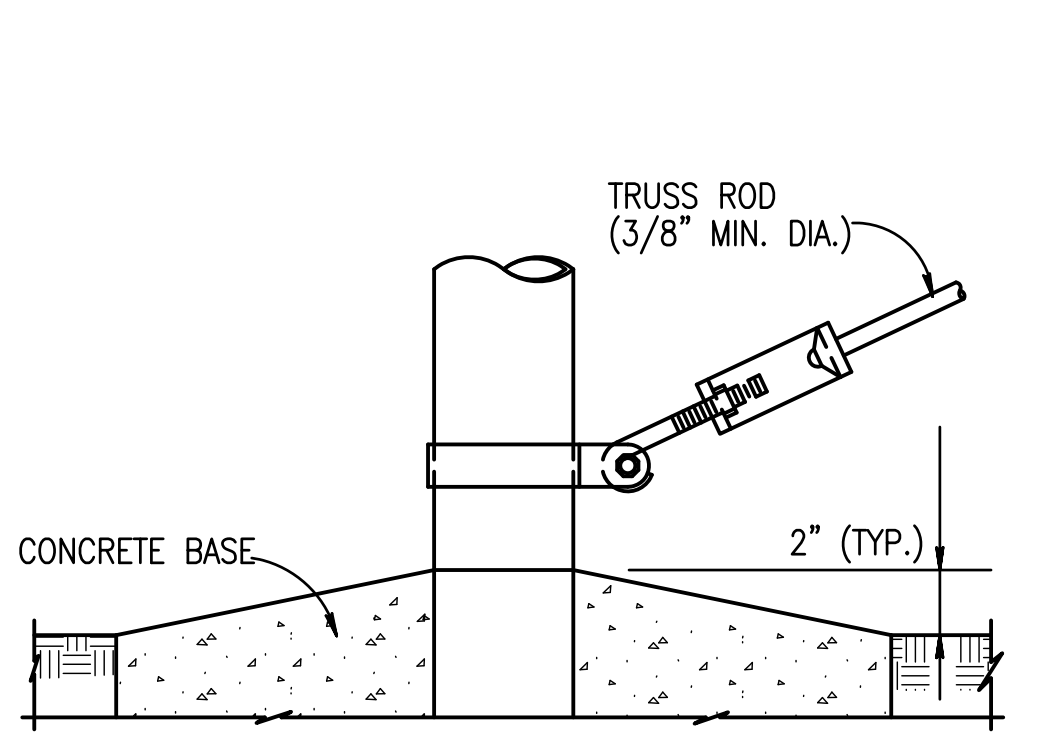


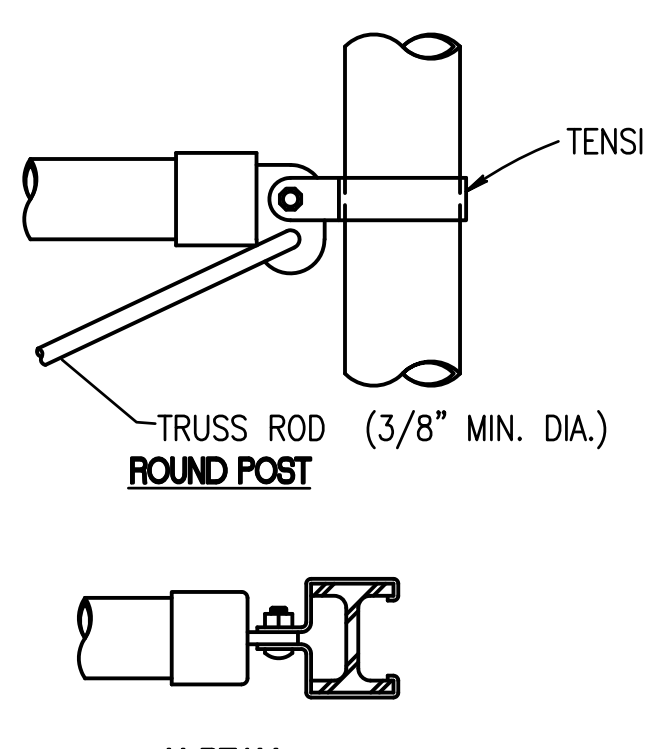
three inches = one foot
one and one half inches = one foot
one inch = one foot
three quarters inch = one foot
one half inch = one foot
three eighths inch = one foot
one eighth inch = one foot
one quarter inch = one foot
one eighth inch = one foot



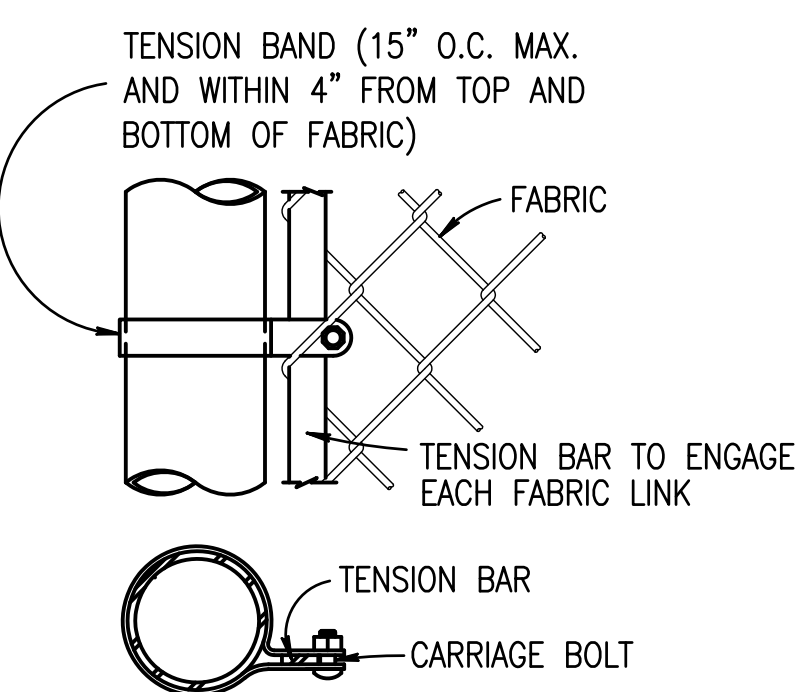
C2
CS101
FE-6 CHAIN-LINK SECURITY FENCE DETAIL
N.T.S.



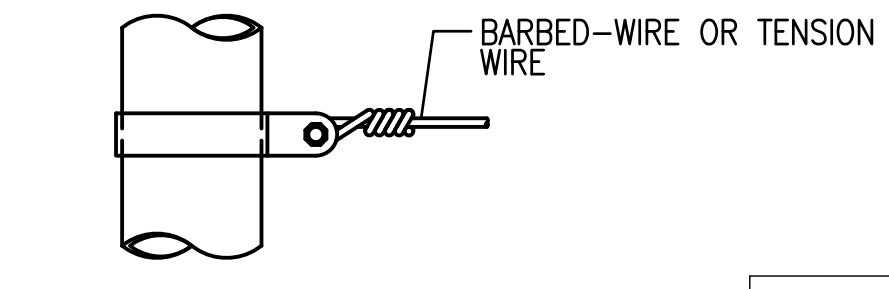
TRUSS ROD AND BAND



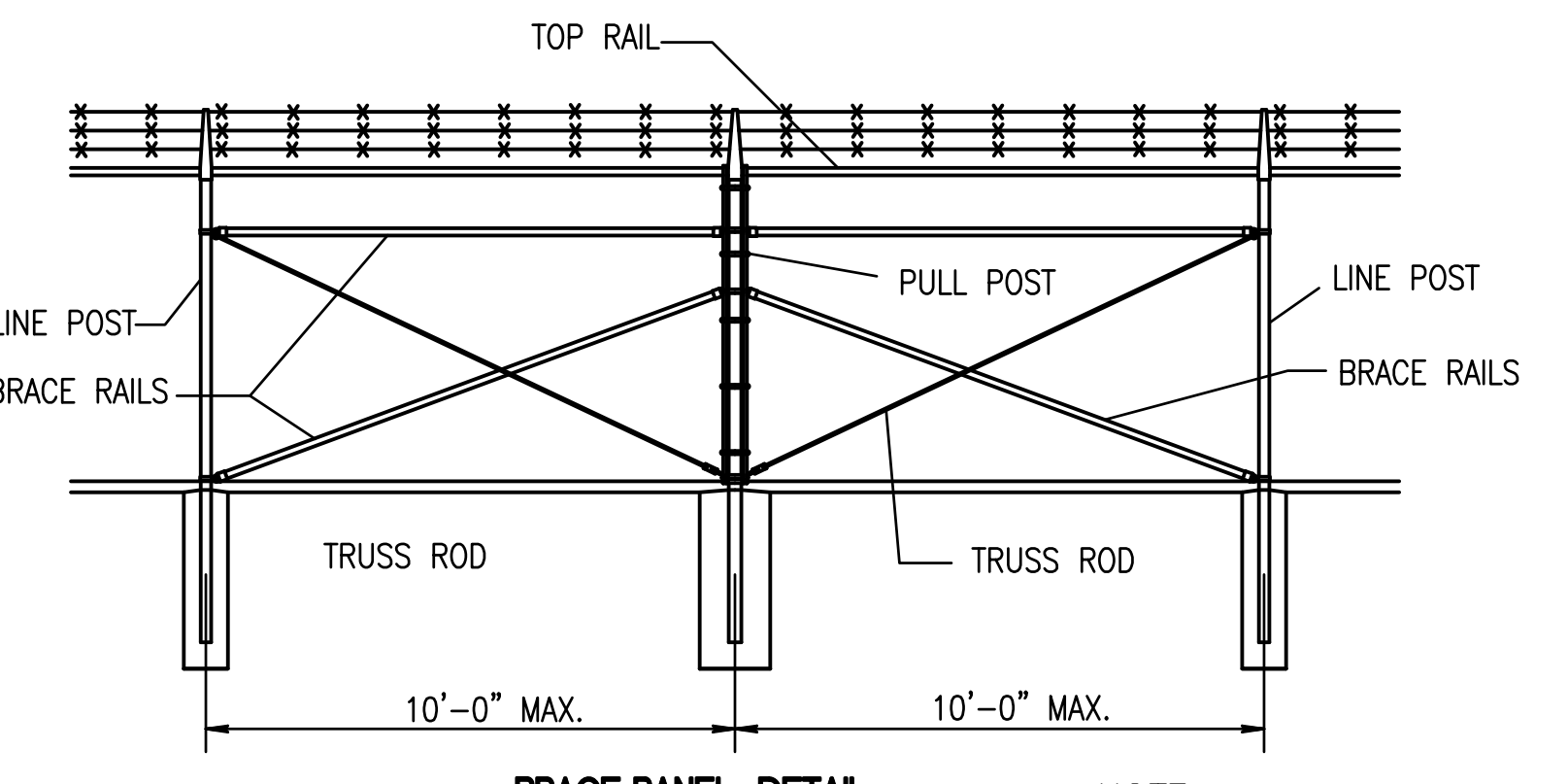
BRACE RAIL CLAMP DETAILS



END OR GATE POST DETAIL

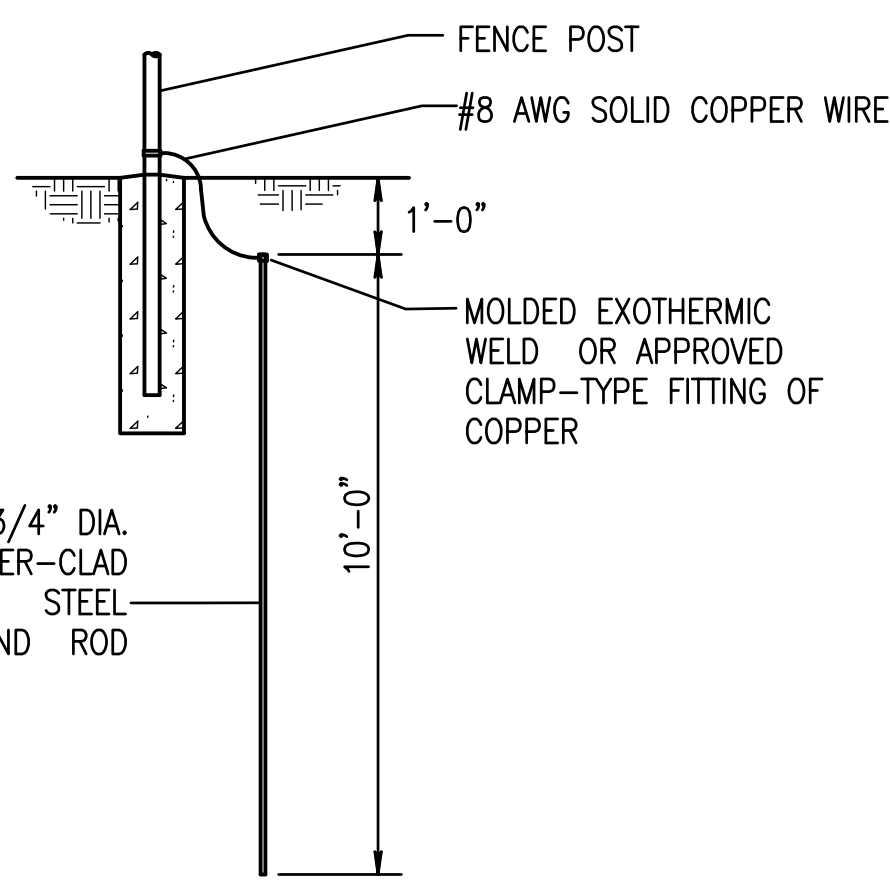


TENSION BAND DETAIL

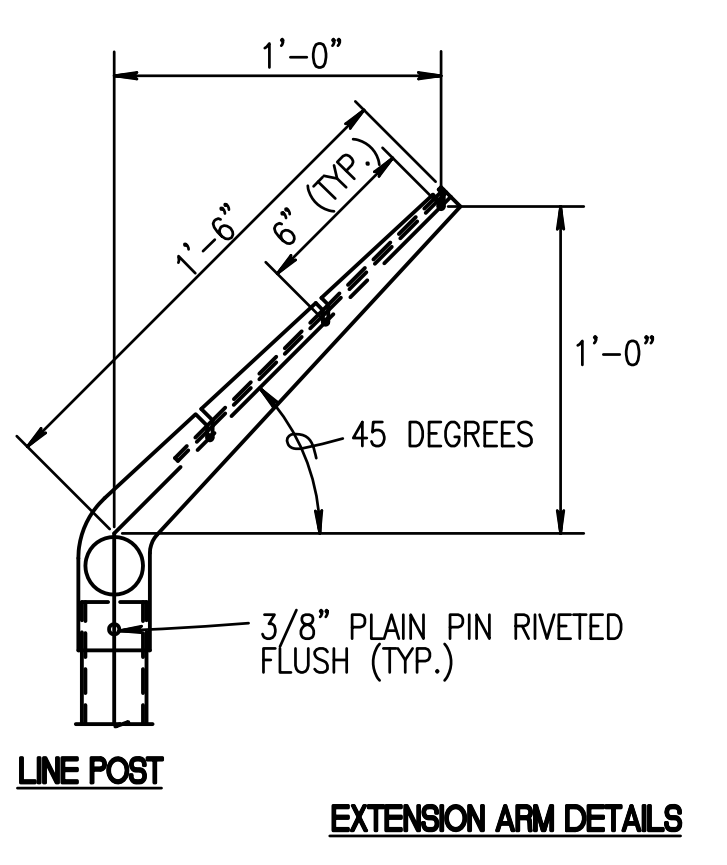


BRACE PANEL DETAIL

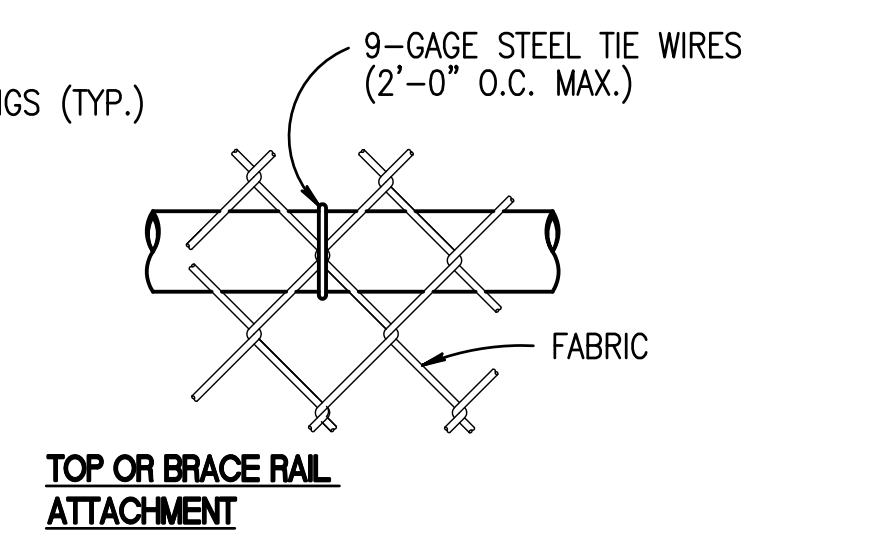
NOTE:
PROVIDE BRACE PANEL WHENEVER
STRAIGHT RUNS EXCEED 500 FEET.



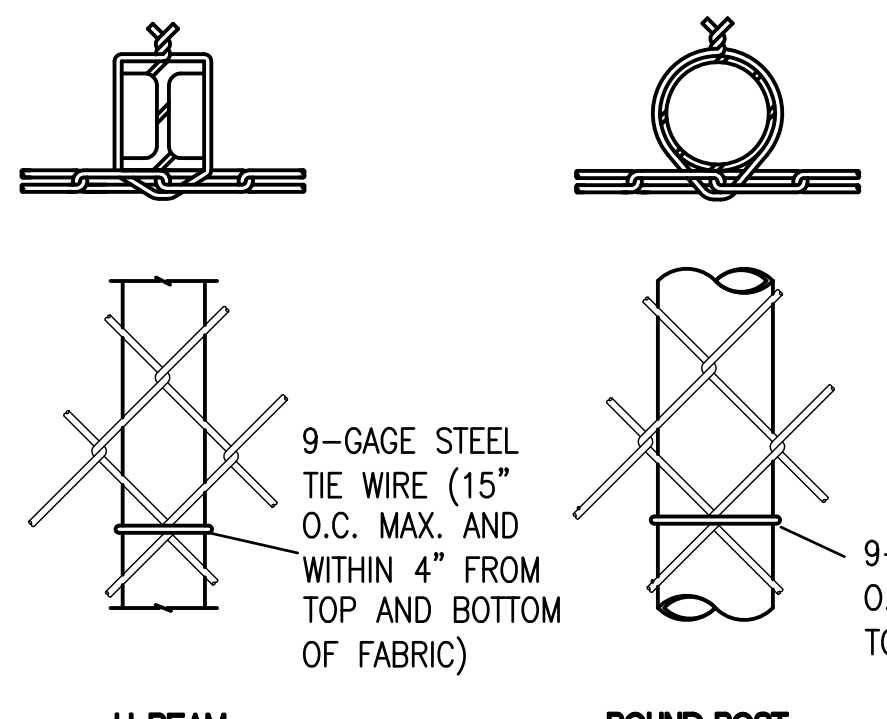
GROUNDING DETAIL



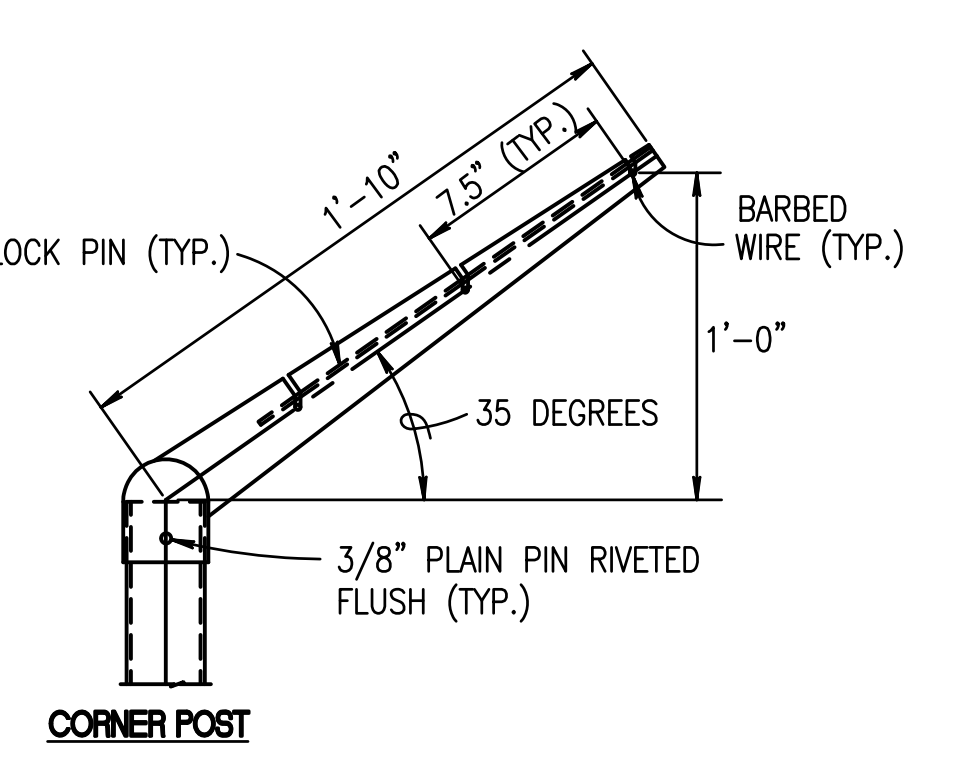
EXTENSION ARM DETAILS



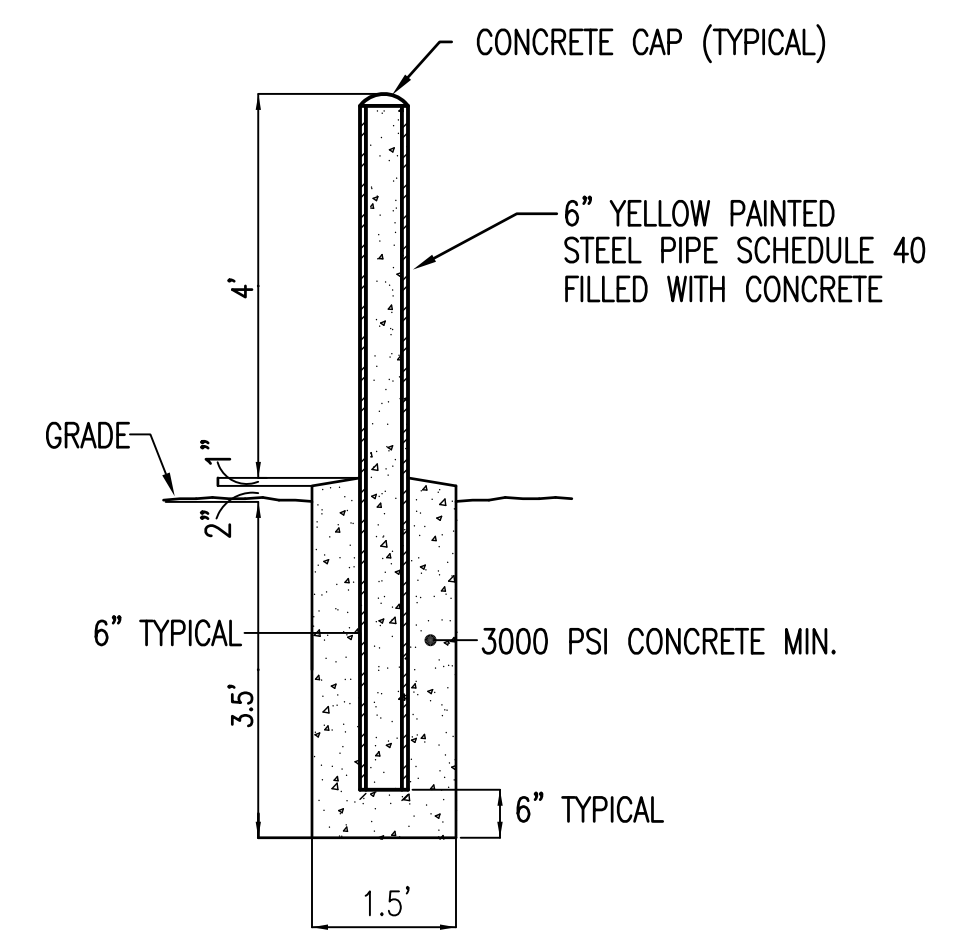
TOP OR BRACE RAIL ATTACHMENT



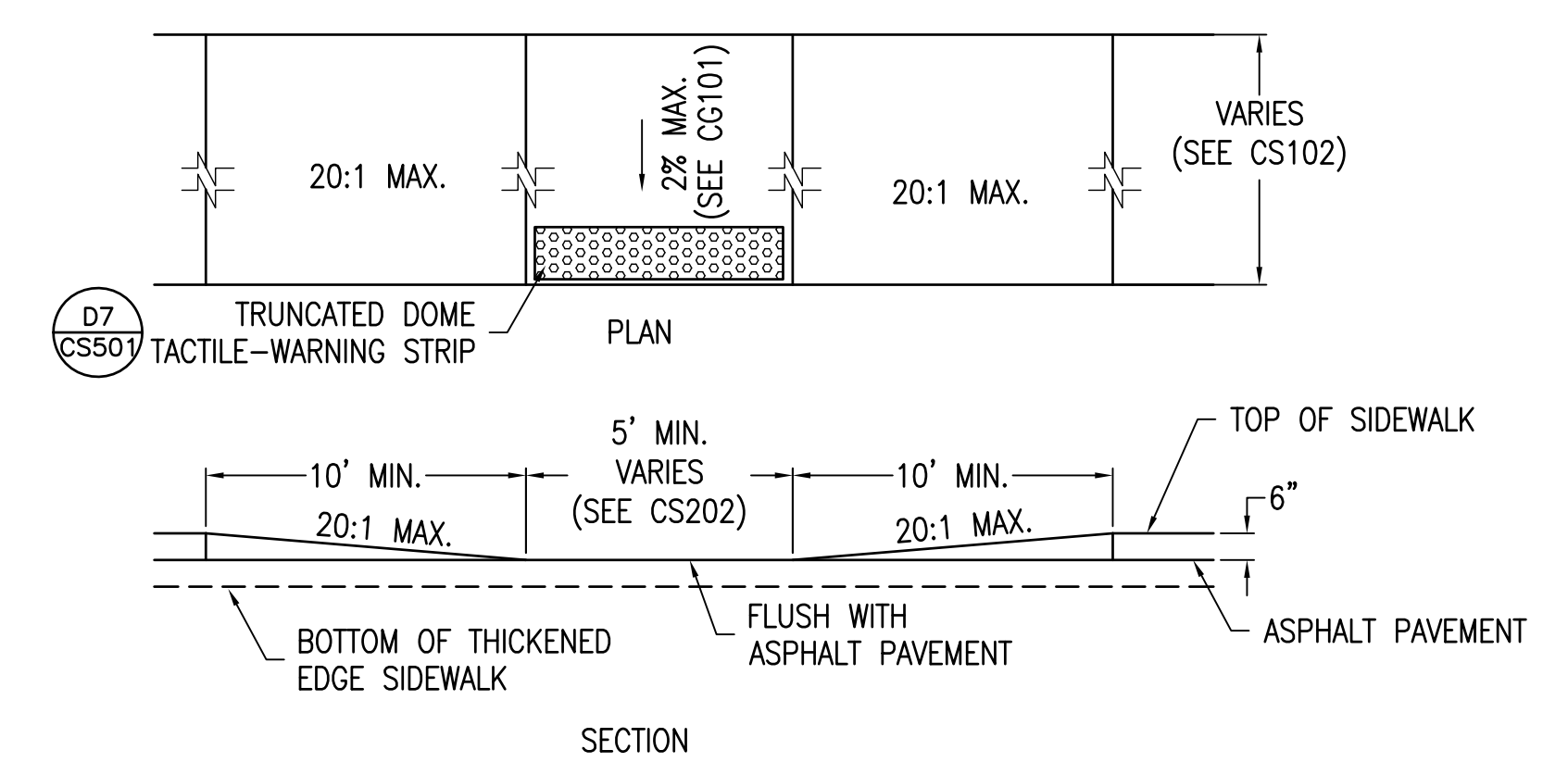
**H-BEAM
LINE POST ATTACHMENTS**



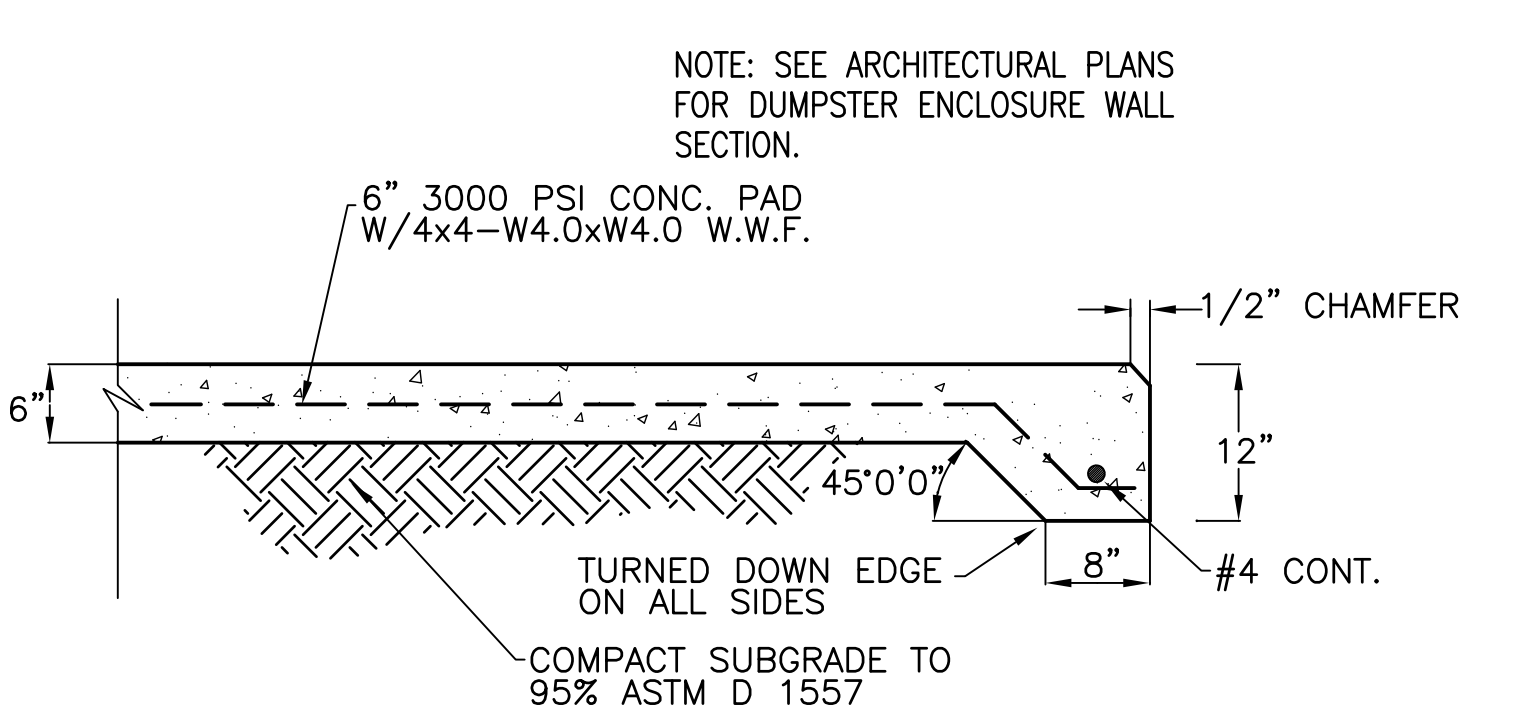
CORNER POST



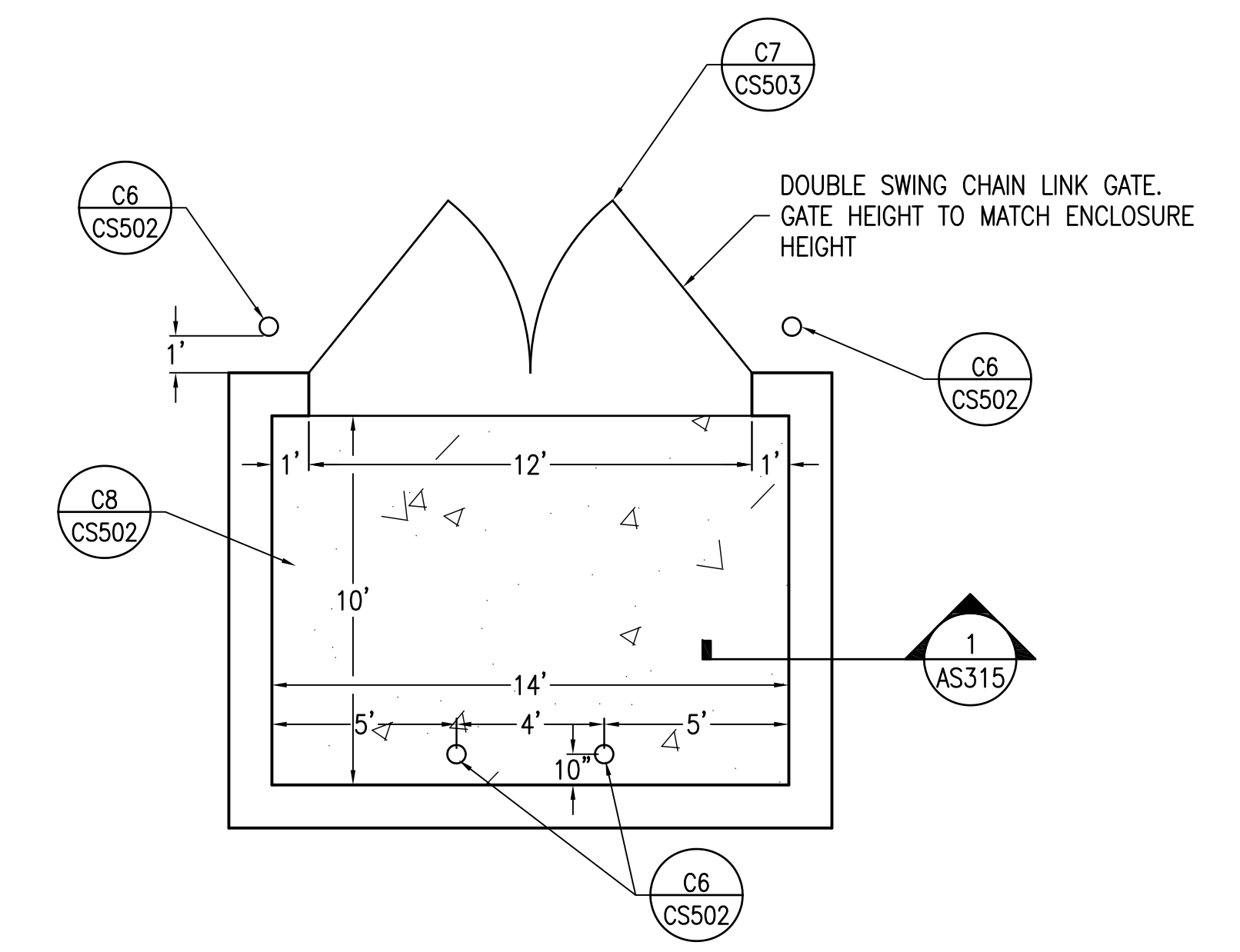
C6
CS101
CS502
BOLLARD DETAIL
N.T.S.



B8
CS101
HANDICAP RAMP DETAIL
N.T.S.



C8
CS101
DUMPSTER PAD DETAIL
N.T.S.



E8
CS101
DUMPSTER ENCLOSURE DETAIL
N.T.S.

USE AND SECTION	STEEL POST SCHEDULE MINIMUM OUTSIDE DIMENSIONS (NOMINAL)		
	FABRIC LESS THAN 72"	FABRIC 72" TO 96"	FABRIC OVER 96"
CORNER, END & PULL POSTS			
TUBULAR - ROUND	2.375" O.D.	2.875" O.D.	4.00" O.D.
TUBULAR - SQUARE	2.00" SQ.	2.50" SQ.	3.00" SQ.
C-SECTION (ROLL-FORMED)	3.50" X 3.50"	3.50" X 3.50"	
LINE POSTS			
TUBULAR - ROUND	1.90" O.D.	2.375" O.D.	2.875" O.D.
H-SECTION	2.25" X 1.70"	2.25" X 1.70"	2.25" X 1.70"
C-SECTION (ROLL-FORMED)	1.875" X 1.625"	2.25" X 1.70"	
TOP, BOTTOM & BRACE RAILS			
TUBULAR - ROUND		1.66" O.D.	
TUBULAR - SQUARE		1.50" O.D.	
H-SECTION		1.625" X 1.50"	
C-SECTION (ROLL-FORMED)		1.625" X 1.25"	

- NOTES:**
- DETAILS SHOWN ARE TO CLARIFY REQUIREMENTS AND ARE NOT INTENDED TO LIMIT OTHER TYPES OF FENCE SECTIONS AND METHODS OF INSTALLATION.
 - WIRE TIES, RAILS, POSTS, AND BRACES SHALL BE CONSTRUCTED ON THE SECURE SIDE OF THE FENCE ALIGNMENT. CHAIN-LINK FABRIC SHALL BE PLACED ON THE OPPOSITE SIDE OF THE SECURE AREA.
 - UNLESS SPECIFICALLY SHOWN OR SPECIFIED, ALL FE6 FENCE SHALL HAVE AN APRON EXTENDED OUTWARD FROM THE AREA BEING PROTECTED.
 - C-SECTION POSTS SHALL BE INSTALLED SO THAT THE VOID INSIDE THE POST IS COMPLETELY FILLED WITH CONCRETE UP TO THE TOP OF THE FOUNDATION.

FENCE LEGEND:

TYPE FE6 - CHAIN-LINK FENCE W/BARBED-WIRE ON SINGLE OUTRIGGER

CONSULTANTS: CIVIL: KENNETH HORNE & ASSOCIATES 7201 NORTH 9TH AVENUE, STE. 6 PENSACOLA, FLORIDA 32504 PH: (850) 471-9005 FX: (850) 471-0093 LANDSCAPE ARCHITECT: CSA GROUP, INC. 6300 PICCADILLY SQUARE DRIVE MOBILE, ALABAMA 36609 PH: (251) 344-4023 FX: (251) 344-4052 COMM/IDS: SCHMIDT CONSULTING GROUP, INC. 40 S. PALAFOX PLACE, STE. 300 PENSACOLA, FLORIDA 32502 PH: (850) 438-0050 FX: (850) 432-8631 ARCHITECTURE: BULLOCK TICE ASSOCIATES, INC. 909 EAST CERVANTES STREET PENSACOLA, FL 32501 PH: (850) 434-5444 FX: (850) 432-5208 SURVEYORS: KCI TECHNOLOGIES, INC. 10401 HIGHLAND MANOR DRIVE, SUITE 120 TAMPA, FLORIDA 33610 PH: (813) 740-2300		ARCHITECT/ENGINEERS: BES DESIGN/BUILD, LLC 766 Middle St, Fairhope, AL 36532 Phone: 251.990.5778 Fax: 251.990.3716 		Drawing Title SITE DETAILS Approved Project Director	Project Title PANAMA CITY JOINT OUTPATIENT CLINIC VA GULF COAST HEALTH CARE Location PANAMA CITY, FLORIDA Date SEPTEMBER 5, 2012 Checked KCH Drawn LRR	Project Number 520-326 Building Number - Drawing Number CS502 Dwg 7 of 21	Office of Construction and Facilities Management
--	--	--	--	--	--	--	---

FINAL SUBMISSION