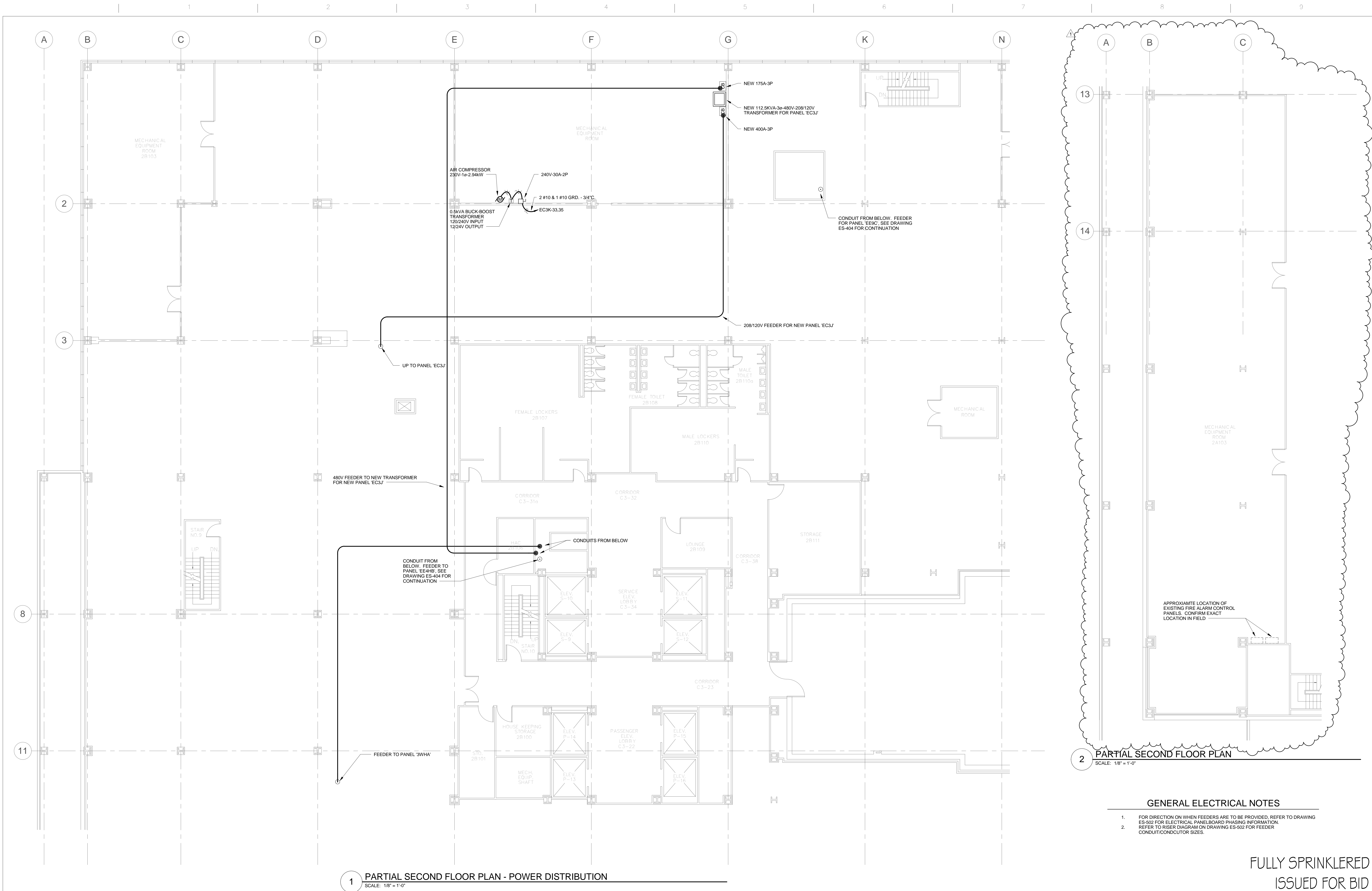


three inches = one foot
one and one half inches = one foot
one inch = one foot
three quarters inch = one foot
one half inch = one foot
three eighths inch = one foot
one quarter inch = one foot
one eighth inch = one foot



1 PARTIAL SECOND FLOOR PLAN - POWER DISTRIBUTION
SCALE: 1/8" = 1'-0"

2 PARTIAL SECOND FLOOR PLAN
SCALE: 1/8" = 1'-0"

GENERAL ELECTRICAL NOTES

- FOR DIRECTION ON WHEN FEEDERS ARE TO BE PROVIDED, REFER TO DRAWING ES-502 FOR ELECTRICAL PANELBOARD PHASING INFORMATION.
- REFER TO RISER DIAGRAM ON DRAWING ES-502 FOR FEEDER CONDUIT/CONDUCTOR SIZES.

FULLY SPRINKLERED
ISSUED FOR BID

<div><div>ISSUED FOR ADDENDUM NO. 1</div><div>09/12/12</div></div> <div>Revisions</div> <div>Date</div>	<div>CONSULTANTS:</div> <div><div>Lab Consultant</div><div>HERA</div></div> <div><div>MEP Engineer</div><div>H.F. Lenz</div></div> <div><div>230 S. Broad Street, Suite 201 Philadelphia, PA 19102 Tel: (215) 675-5333 Fax: (215) 675-5334</div><div><div>1407 Scalp Avenue Johnstown, PA 15004 Tel: (814) 269-9366 Fax: (814) 269-9301</div></div></div>	<div>KEY PLAN:</div> <div><div><div></div><div>BUILDING 2</div></div><div><div></div><div>N</div></div></div>	<div>ARCHITECT:</div> <div><div><div></div><div>ARRAY</div><div>healthcare facilities solutions</div></div><div><div>2520 Renaissance Boulevard, Suite 110 King of Prussia, PA 19406</div><div><div>t: 610.270.0599 f: 610.270.0995 www.arrayhfs.com</div></div></div></div>	<div>Project Number</div> <div>3515</div> <div>Scale</div> <div>As indicated</div>	<div>Drawing Title</div> <div>ELECTRICAL SECOND FLOOR PLAN - POWER DISTRIBUTION</div> <div>Approved: Project Director</div>	<div>Project Title</div> <div>REPLACEMENT OF AC-19 AND LABORATORY RENOVATION</div> <div>Location</div> <div>3900 WOODLAND AVENUE PHILADELPHIA, PA 19104</div> <div>Date</div> <div>04-12-2012</div> <div>Checked</div> <div>TME</div> <div>Drawn</div> <div>RJD</div>	<div>VA Project Number</div> <div>VA244-P-1786</div> <div>Building Number</div> <div>2</div> <div>Drawing Number</div> <div>ES-403</div> <div>Dwg. of</div>	<div>Office of Facilities Management</div> <div><div></div><div>Department of Veterans Affairs</div></div>
---	---	---	--	--	---	---	---	--