

111 UPGRADE PROSTHETICS PRODUCT LINE IMPROVEMENTS

AUGUST 14, 2012

DRAWING INDEX

[illegible]

B001	ELECTRICAL SYMBOLS AND SHEET INDEX
B002	ELECTRICAL ABBREVIATIONS
B003	PARTIAL BASEMENT FLOOR PLAN - ELECTRICAL DEMOLITION
B004	PARTIAL BASEMENT FLOOR PLAN - LIGHTING
B005	PARTIAL BASEMENT FLOOR PLAN - POWER
B006	PARTIAL BASEMENT FLOOR PLAN - SYSTEMS
B007	FINISHED FLOOR PLANS
B008	DETAILS
B009	DETAILS
B010	RESER. DIAGRAM - POWER
B011	RESER. DIAGRAM - POWER
B012	SCHEDULES
B013	TELECOM VOICE AND DATA RESER.
B014	FIRE ALARM RESER.
B015	OVERHEAD PACKING SYSTEM RESER.
B016	OVERHEAD PACKING SYSTEM RESER.
B017	FIRE ALARM RESER. DIAGRAM
B018	INTER CALL RESER. DIAGRAM

VA DRAWING INDEX

A00V	PHASING PLAN PHASE 1		
A01V	PHASING PLAN PHASE 2		
A02V	PHASING PLAN PHASE 3		
A03V	PHASING PLAN PHASE 4		
A04V	PHASING PLAN PHASE 5		
A05V	PHASING PLAN PHASE 6		
A06V	PHASING PLAN PHASE 7		
A07V	PHASING PLAN PHASE 8		
A08V	LIFE SAFETY PLAN		
A09V	DEMOLITION PLAN 01/71		
A10V	FLOOR PLAN CURB CITY		
A11V	FLOOR PLAN 01/71		
A12V	FLOOR PATTERN, HANDRAIL & CORNER GUARD PLAN		
A13V	FLOOR PATTERN, HANDRAIL & CORNER GUARD PLAN		
A14V	FURNITURE AND EQUIPMENT CURB CITY		
A15V	FURNITURE AND EQUIPMENT PLAN		
A16V	PHASE 2, 3, 4, 5, 6, 7, 8, 9, 10, 11, 12, 13, 14, 15, 16, 17, 18, 19, 20, 21, 22, 23, 24, 25, 26, 27, 28, 29, 30, 31, 32, 33, 34, 35, 36, 37, 38, 39, 40, 41, 42, 43, 44, 45, 46, 47, 48, 49, 50, 51, 52, 53, 54, 55, 56, 57, 58, 59, 60, 61, 62, 63, 64, 65, 66, 67, 68, 69, 70, 71, 72, 73, 74, 75, 76, 77, 78, 79, 80, 81, 82, 83, 84, 85, 86, 87, 88, 89, 90, 91, 92, 93, 94, 95, 96, 97, 98, 99, 100		
A17V	REFLECTED CEILING PLAN CURB CITY		
A18V	REFLECTED CEILING PLAN 01/71		
A19V	INTERIOR ELEVATIONS		
A20V	DOOR SCHEDULE, TYPES, DETAILS & HARDWARE SCHEDULE		
A21V	PARTIAL BASEMENT FLOOR PLAN - FIRE PROTECTION DEMOLITION		
A22V	PARTIAL BASEMENT FLOOR PLAN - FIRE PROTECTION		
A23V	PARTIAL BASEMENT FLOOR PLAN - FIRE PROTECTION		
A24V	PARTIAL BASEMENT FLOOR PLAN - PLUMBING DEMOLITION		
A25V	PARTIAL BASEMENT FLOOR PLAN - PLUMBING		
A26V	PARTIAL BASEMENT FLOOR PLAN - PLUMBING		
A27V	PARTIAL BASEMENT FLOOR PLAN - PLUMBING		
A28V	PARTIAL BASEMENT FLOOR PLAN - PLUMBING		
A29V	PARTIAL BASEMENT FLOOR PLAN - PLUMBING		
A30V	PARTIAL BASEMENT FLOOR PLAN - PLUMBING		
A31V	PARTIAL BASEMENT FLOOR PLAN - PLUMBING		
A32V	PARTIAL BASEMENT FLOOR PLAN - PLUMBING		
A33V	PARTIAL BASEMENT FLOOR PLAN - PLUMBING		
A34V	PARTIAL BASEMENT FLOOR PLAN - PLUMBING		
A35V	PARTIAL BASEMENT FLOOR PLAN - PLUMBING		
A36V	PARTIAL BASEMENT FLOOR PLAN - PLUMBING		
A37V	PARTIAL BASEMENT FLOOR PLAN - PLUMBING		
A38V	PARTIAL BASEMENT FLOOR PLAN - PLUMBING		
A39V	PARTIAL BASEMENT FLOOR PLAN - PLUMBING		
A40V	PARTIAL BASEMENT FLOOR PLAN - PLUMBING		
A41V	PARTIAL BASEMENT FLOOR PLAN - PLUMBING		
A42V	PARTIAL BASEMENT FLOOR PLAN - PLUMBING		
A43V	PARTIAL BASEMENT FLOOR PLAN - PLUMBING		
A44V	PARTIAL BASEMENT FLOOR PLAN - PLUMBING		
A45V	PARTIAL BASEMENT FLOOR PLAN - PLUMBING		
A46V	PARTIAL BASEMENT FLOOR PLAN - PLUMBING		
A47V	PARTIAL BASEMENT FLOOR PLAN - PLUMBING		
A48V	PARTIAL BASEMENT FLOOR PLAN - PLUMBING		
A49V	PARTIAL BASEMENT FLOOR PLAN - PLUMBING		
A50V	PARTIAL BASEMENT FLOOR PLAN - PLUMBING		
A51V	PARTIAL BASEMENT FLOOR PLAN - PLUMBING		
A52V	PARTIAL BASEMENT FLOOR PLAN - PLUMBING		
A53V	PARTIAL BASEMENT FLOOR PLAN - PLUMBING		
A54V	PARTIAL BASEMENT FLOOR PLAN - PLUMBING		
A55V	PARTIAL BASEMENT FLOOR PLAN - PLUMBING		
A56V	PARTIAL BASEMENT FLOOR PLAN - PLUMBING		
A57V	PARTIAL BASEMENT FLOOR PLAN - PLUMBING		
A58V	PARTIAL BASEMENT FLOOR PLAN - PLUMBING		
A59V	PARTIAL BASEMENT FLOOR PLAN - PLUMBING		
A60V	PARTIAL BASEMENT FLOOR PLAN - PLUMBING		
A61V	PARTIAL BASEMENT FLOOR PLAN - PLUMBING		
A62V	PARTIAL BASEMENT FLOOR PLAN - PLUMBING		
A63V	PARTIAL BASEMENT FLOOR PLAN - PLUMBING		
A64V	PARTIAL BASEMENT FLOOR PLAN - PLUMBING		
A65V	PARTIAL BASEMENT FLOOR PLAN - PLUMBING		
A66V	PARTIAL BASEMENT FLOOR PLAN - PLUMBING		
A67V	PARTIAL BASEMENT FLOOR PLAN - PLUMBING		
A68V	PARTIAL BASEMENT FLOOR PLAN - PLUMBING		
A69V	PARTIAL BASEMENT FLOOR PLAN - PLUMBING		
A70V	PARTIAL BASEMENT FLOOR PLAN - PLUMBING		
A71V	PARTIAL BASEMENT FLOOR PLAN - PLUMBING		
A72V	PARTIAL BASEMENT FLOOR PLAN - PLUMBING		
A73V	PARTIAL BASEMENT FLOOR PLAN - PLUMBING		
A74V	PARTIAL BASEMENT FLOOR PLAN - PLUMBING		
A75V	PARTIAL BASEMENT FLOOR PLAN - PLUMBING		
A76V	PARTIAL BASEMENT FLOOR PLAN - PLUMBING		
A77V	PARTIAL BASEMENT FLOOR PLAN - PLUMBING		
A78V	PARTIAL BASEMENT FLOOR PLAN - PLUMBING		
A79V	PARTIAL BASEMENT FLOOR PLAN - PLUMBING		
A80V	PARTIAL BASEMENT FLOOR PLAN - PLUMBING		
A81V	PARTIAL BASEMENT FLOOR PLAN - PLUMBING		
A82V	PARTIAL BASEMENT FLOOR PLAN - PLUMBING		
A83V	PARTIAL BASEMENT FLOOR PLAN - PLUMBING		
A84V	PARTIAL BASEMENT FLOOR PLAN - PLUMBING		
A85V	PARTIAL BASEMENT FLOOR PLAN - PLUMBING		
A86V	PARTIAL BASEMENT FLOOR PLAN - PLUMBING		
A87V	PARTIAL BASEMENT FLOOR PLAN - PLUMBING		
A88V	PARTIAL BASEMENT FLOOR PLAN - PLUMBING		
A89V	PARTIAL BASEMENT FLOOR PLAN - PLUMBING		
A90V	PARTIAL BASEMENT FLOOR PLAN - PLUMBING		
A91V	PARTIAL BASEMENT FLOOR PLAN - PLUMBING		
A92V	PARTIAL BASEMENT FLOOR PLAN - PLUMBING		
A93V	PARTIAL BASEMENT FLOOR PLAN - PLUMBING		
A94V	PARTIAL BASEMENT FLOOR PLAN - PLUMBING		
A95V	PARTIAL BASEMENT FLOOR PLAN - PLUMBING		
A96V	PARTIAL BASEMENT FLOOR PLAN - PLUMBING		
A97V	PARTIAL BASEMENT FLOOR PLAN - PLUMBING		
A98V	PARTIAL BASEMENT FLOOR PLAN - PLUMBING		
A99V	PARTIAL BASEMENT FLOOR PLAN - PLUMBING		
A00V	PARTIAL BASEMENT FLOOR PLAN - PLUMBING		

</

GENERAL NOTES

FIRE AND SAFETY NOTES

MAINTAINING THE INTEGRITY OF THE TRIM AND SAFETY SYSTEM IN PLACE IN THE MEDICAL CENTER AND ALL OF ITS OUT BUILDINGS DURING CONSTRUCTION SHALL BE THE RESPONSIBILITY OF THE CONTRACTOR. IN ADDITION TO ALL MEDICAL CENTER POLICIES, ALL MANUAL, STATE, AND LOCAL CODES AND ORDINANCES SHALL APPLY TO ALL OF THEIR CONTRACTORS AND SUBCONTRACTORS. THE CONTRACTOR SHALL BE RESPONSIBLE FOR MAINTAINING OVERLAP SAFETY POLICIES. THE CONTRACTOR SHALL PROVIDE LOCKOUT-TAGOUT AND CONFINED SPACE ENTRY POLICIES TO ALL SUBS. THE CONTRACTOR SHALL BE RESPONSIBLE FOR OBTAINING ANY SAFETY APPROVALS, BY AS REQUIRED BY OSHA. THESE POLICIES SHALL BE SUBMITTED PER PRIOR APPROVAL BY THE ASSESSMENT AND SAFETY OFFICER/ANALYST. THE CONTRACTOR SHALL MAINTAIN A JOB COSTUME AREA. THE CONTRACTOR WILL MAINTAIN PROPER PROTECTIVE WEAR AND SAFETY ACCESSORIES. ALL CONTRACTORS ON MEDICAL CENTER GROUNDS ARE REQUIRED TO WEAR PROTECTIVE WEAR.

TEMPORARY CONSTRUCTION PATHTWAYS SHALL PROVIDE A SUFFICIENT SEPARATION BETWEEN THE CONSTRUCTION AREAS AND ALL OTHER OCCUPANCIES. MAINTAINING INTEGRITY OF THE ENCLOSURES AND THE PROTECTION SYSTEMS, INCLUDING THE FLAME SPRINKLER, SMOKE DETECTOR SYSTEMS, AND SPRINKLER SYSTEMS SHALL NOT BE IMPAIRED DURING CONSTRUCTION EXCEPT FOR DEVICES BEING REPAIRED/REPLACED WITHIN THE WORK AREA. SMOKE DETECTORS SHALL BE DESIGNED BY EACH CONTRACTOR AND BE REPAIRED/REPLACED BY CALLING EXTENSION AREA IN THE REMOVAL OF EACH DETECTOR. SMOKE DETECTORS SHALL BE REPAIRED/REPLACED BY CALLING EXTENSION AREA IN THE REMOVAL OF EACH DETECTOR. IT IS THE WILL THAT FLAMING RISK OF OVERHEAT, SMOKE DETECTORS AND OR EXTENSION, AT NO TIME WILL BE COVERED BY BAGS, THE PLASTIC OR IN ANY OTHER MANNER THAT WILL DEPRIVE THEIR ABILITY TO SENSE SMOKE OR HEAT AND OPERATE AS DESIGNED. IT IS THE WILL THAT FLAMING RISK OF OVERHEAT, SMOKE DETECTORS AND OR EXTENSION, AT NO TIME WILL BE COVERED BY BAGS, THE PLASTIC OR IN ANY OTHER MANNER THAT WILL DEPRIVE THEIR ABILITY TO SENSE SMOKE OR HEAT AND OPERATE AS DESIGNED. IT IS THE WILL THAT FLAMING RISK OF OVERHEAT, SMOKE DETECTORS AND OR EXTENSION, AT NO TIME WILL BE COVERED BY BAGS, THE PLASTIC OR IN ANY OTHER MANNER THAT WILL DEPRIVE THEIR ABILITY TO SENSE SMOKE OR HEAT AND OPERATE AS DESIGNED. IT IS THE WILL THAT FLAMING RISK OF OVERHEAT, SMOKE DETECTORS AND OR EXTENSION, AT NO TIME WILL BE COVERED BY BAGS, THE PLASTIC OR IN ANY OTHER MANNER THAT WILL DEPRIVE THEIR ABILITY TO SENSE SMOKE OR HEAT AND OPERATE AS DESIGNED.

ALL BUILDINGS ON THIS MEDICAL CENTER ARE SMOKE FREE ZONES. USE OF SMOKING MATERIALS STORED ON SITE IN AN APPROVED AND APPROPRIATELY MARKED FLAMMABLE MATERIALS CUPBOARD OR CONTAINER SHALL BE PROHIBITED. ALL FLAMMABLE MATERIALS SHALL BE REMOVED FROM THE CONSTRUCTION AREA ON A DAILY BASIS. FLAMMABLE MATERIALS MAY BE STORED ON SITE IN AN APPROVED AND APPROPRIATELY MARKED FLAMMABLE MATERIALS CUPBOARD OR CONTAINER. ALL FLAMMABLE MATERIALS SHALL BE REMOVED FROM THE CONSTRUCTION AREA ON A DAILY BASIS. FLAMMABLE MATERIALS MAY BE STORED ON SITE IN AN APPROVED AND APPROPRIATELY MARKED FLAMMABLE MATERIALS CUPBOARD OR CONTAINER. ALL FLAMMABLE MATERIALS SHALL BE REMOVED FROM THE CONSTRUCTION AREA ON A DAILY BASIS. FLAMMABLE MATERIALS MAY BE STORED ON SITE IN AN APPROVED AND APPROPRIATELY MARKED FLAMMABLE MATERIALS CUPBOARD OR CONTAINER.

FAILURE ON THE PART OF ALL CONTRACTORS, TO COMPLY WITH THE ABOVE SHALL RESULT IN REVOCATION OF TRIMS AND/OR DAMAGES BY THE GENERAL CONTRACTOR.

HVAC, PLUMBING & ELECTRICAL

ARNOLD & O'SHERIDAN

4125 N 124TH STREET
BROOKFIELD, WISCONSIN 53005
262.783.6130 (P) 262.783.5121 (F)
A&O PROJECT NUMBER 10125300

ARCHITECTURAL

PLUNKETT RAYSICH ARCHITECTS

11000 WEST PARK PLACE
MILWAUKEE, WI 53224
414.359.3060 (P) 414.359.3070 (F)

DEPARTMENT OF VETERANS AFFAIRS

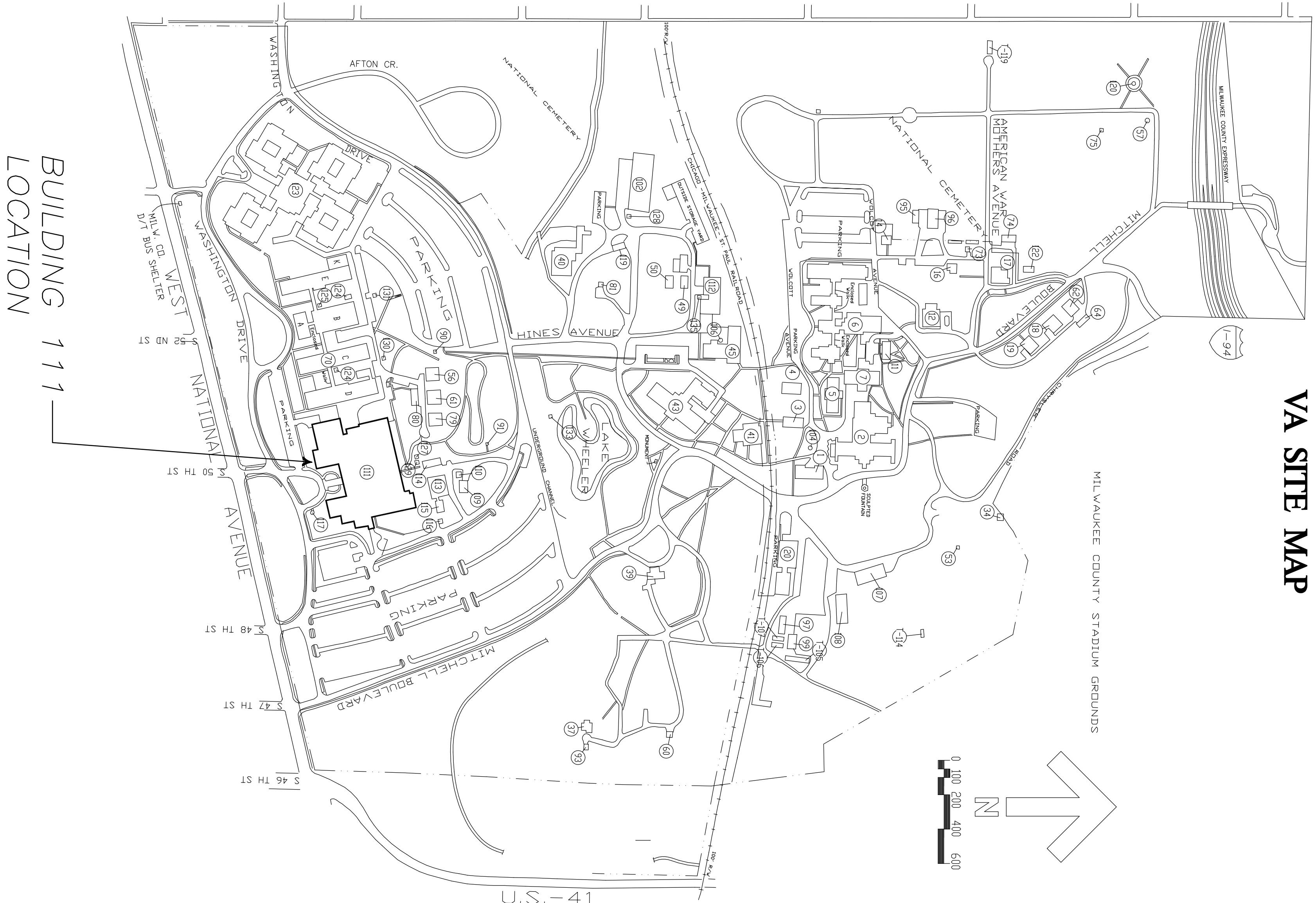
VIA MEDICAL CENTER

5000 WEST NATIONAL AVENUE MILWAUKEE, WISCONSIN 53295

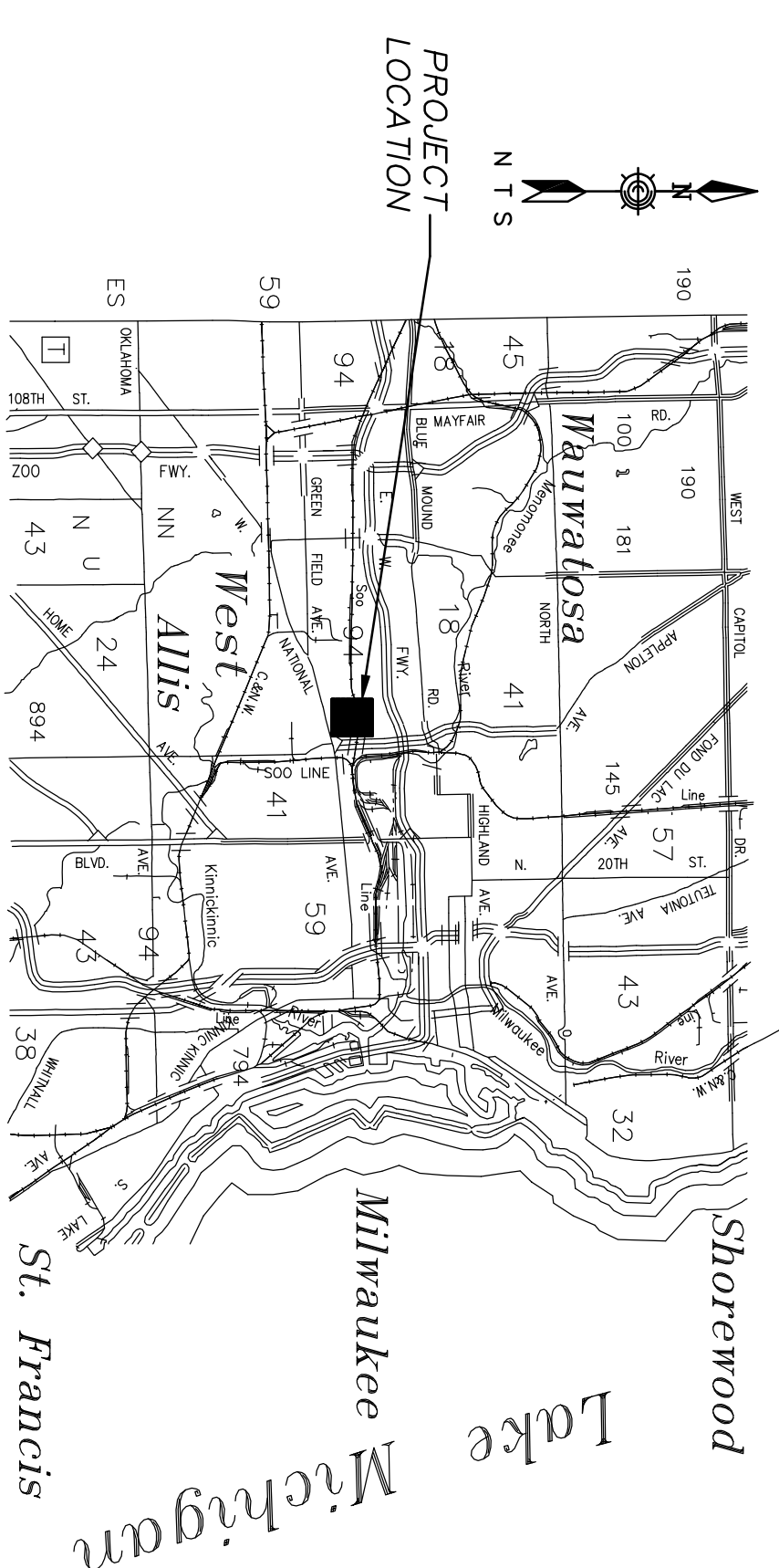
RENOVATIONS FOR BLDG III

VA PROJECT NUMBER 695-II-115

VA SITE MAP

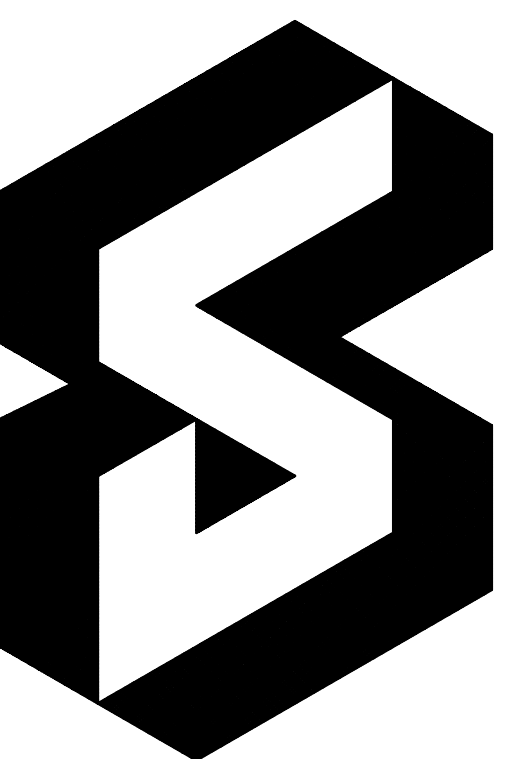


VICINITY MAP



NOTICE REGARDING DRAWINGS: FOR CONVENIENCE OF REFERENCE, THE DRAWINGS PREPARED BY UNDERGROUND ARCHITECT INC. ARE BEING BOUND TOGETHER WITH DRAWINGS PREPARED BY OTHER PERSONS OR FIRMS HIRED DIRECTLY BY THE DESIGN-BUILDER OR OWNER AND NOT UNDER THE DIRECTION OR CONTROL OF THE ARCHITECT. THE DRAWINGS PREPARED BY THE ARCHITECT CAN BE IDENTIFIED BY THE ARCHITECT'S TITLEBLOCK ON EACH INDIVIDUAL DRAWING, FOR WHICH IT IS RESPONSIBLE. THE OTHER DRAWINGS ARE THE SOLE RESPONSIBILITY OF THEIR RESPECTIVE PREPARERS.

IN THE CASE OF CONFLICTS OR DISCREPANCIES WITHIN OR AMONG THE CONTRACT DRAWINGS, THE BETTER QUALITY, MORE STRINGENT REQUIREMENTS OR GREATER QUANTITY OF WORK, AS DETERMINED BY THE GOVERNMENT, SHALL BE PROVIDED.



G1001