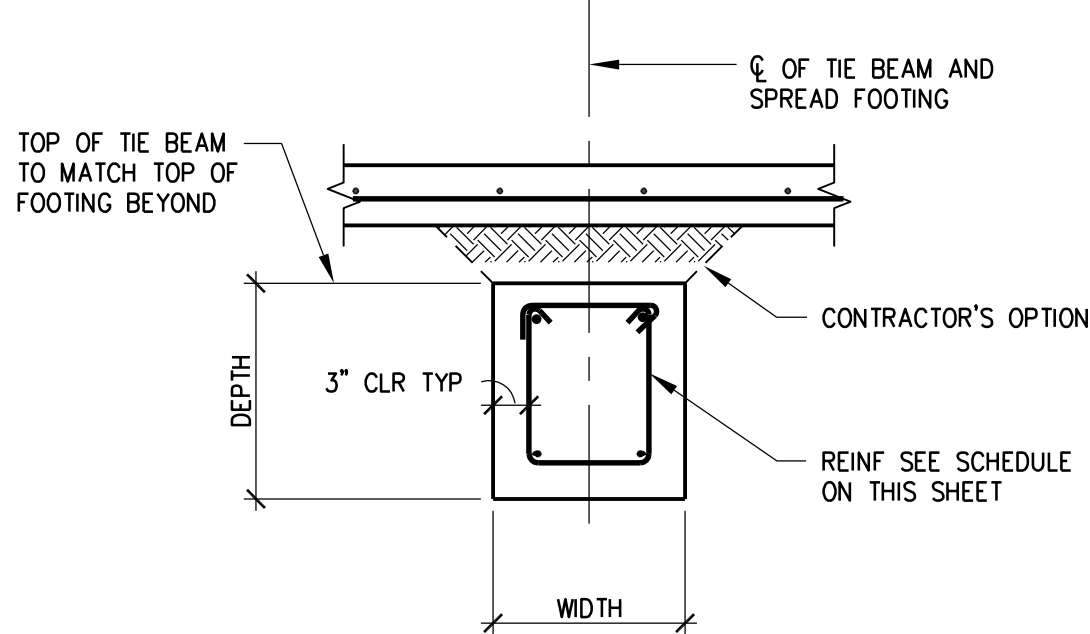


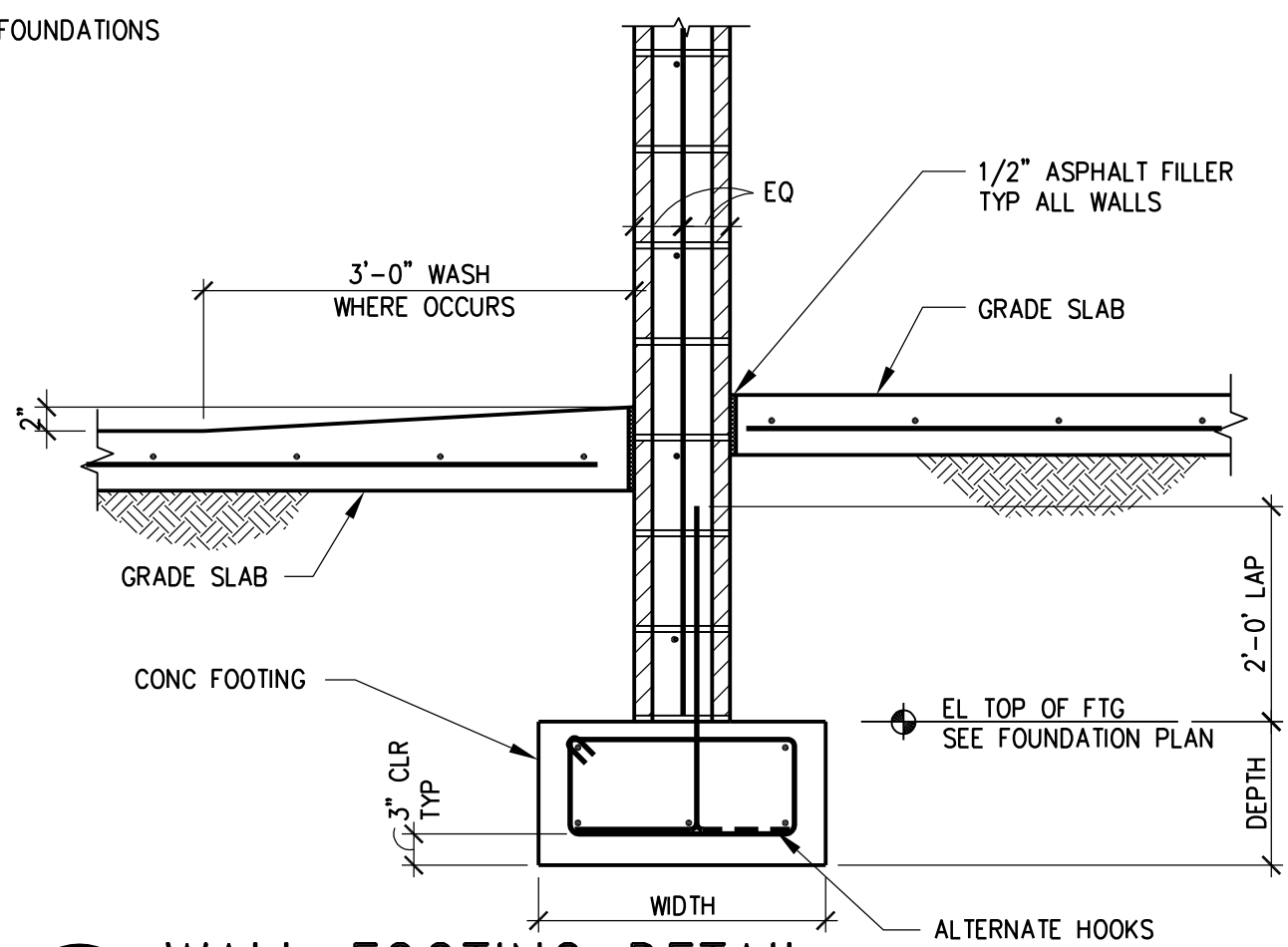
WALL FOOTING AND TIE BEAM SCHEDULE

MARK	WIDTH	DEPTH	LONGITUDINAL REINFORCING			TRANSVERSE REINFORCING			STIRRUPS	SIDE REINFORCEMENT	REMARKS
			TOP	BOT	ADDED	TOP	BOT	ADDED			
WF1	2'-6"	2'-6"	(3)#5 CONT	(3)#5 CONT	-	-	-	-	#4 @ 16"	(2)#4 CONT	TYP. UN
WF2	3'-0"	2'-6"	(4)#5 CONT	(4)#5 CONT	-	-	-	-	#4 @ 16"	(3)#7 CONT	
WF3	6'-0"	2'-6"	(6)#6 CONT	(6)#6 CONT	-	#4 @ 24"	#5 @ 16"	-	#4 @ 16"	(2)#5 CONT	
TBI	3'-0"	3'-0"	(4)#11CONT	(4)#11CONT	-	-	-	-	#4 @ 12"	(3)#11 CONT	

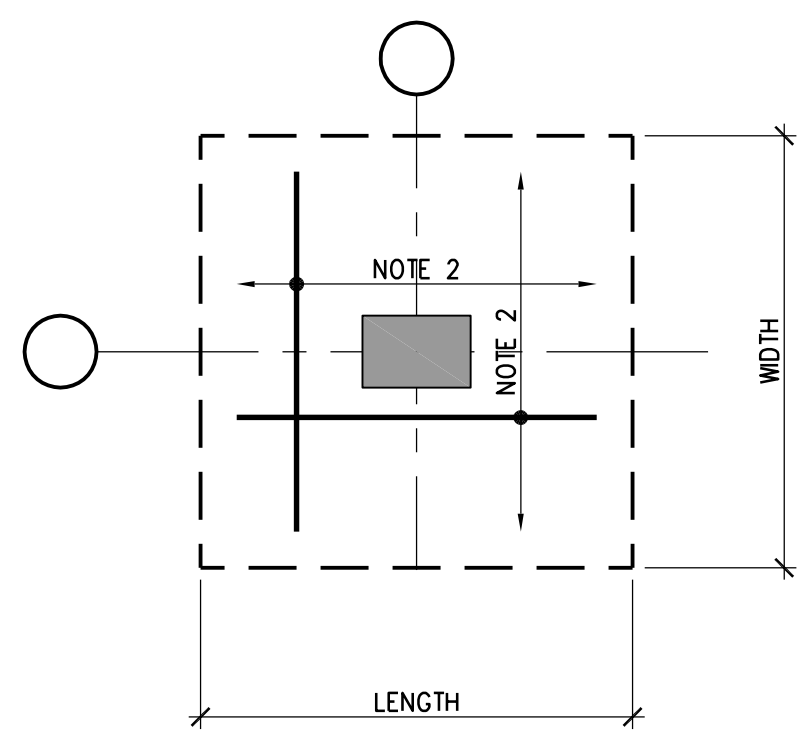
- NOTES:
1. CONCRETE STRENGTH  $F'_c$  = (SEE GENERAL CONCRETE NOTES)
  2. LONGITUDINAL REINFORCEMENT TO PASS THRU SPREAD FOOTING/PILE CAPS/FOUNDATIONS



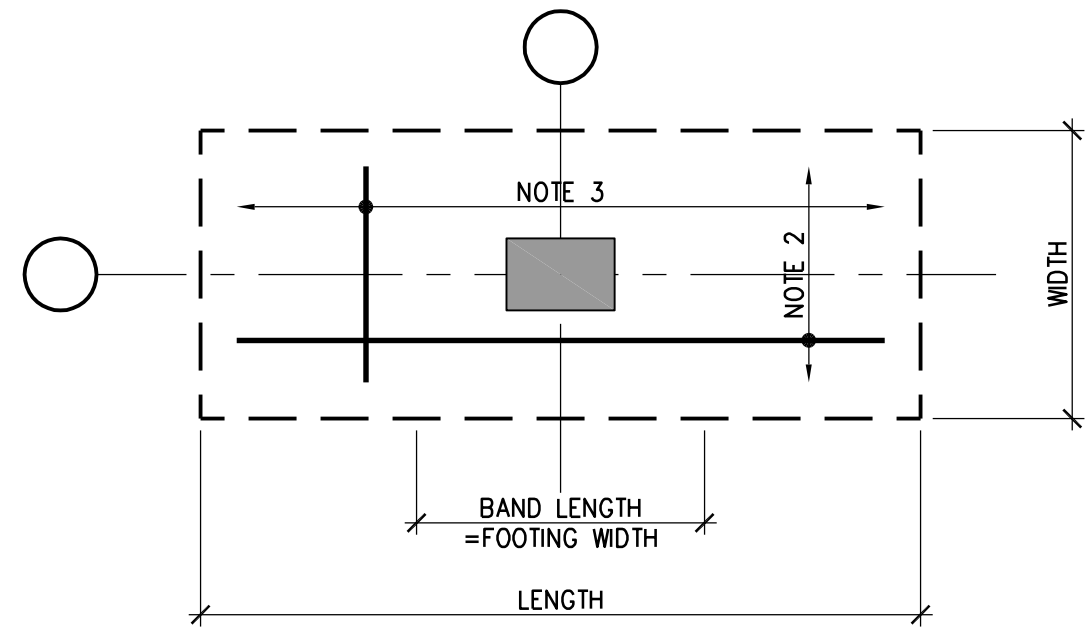
D5 TIE BEAM DETAIL



D7 WALL FOOTING DETAIL



PLAN VIEW SQUARE FOOTING



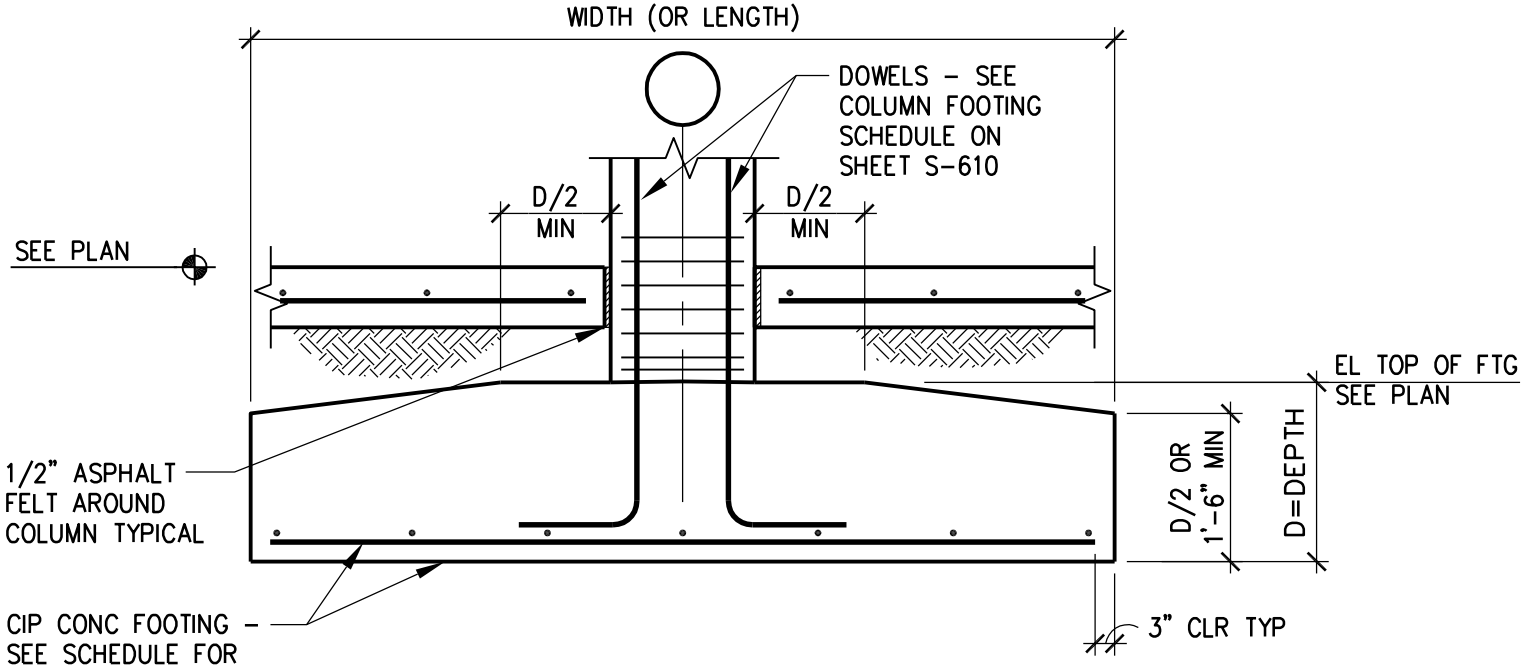
PLAN VIEW RECTANGULAR FOOTING

B5 COLUMN/FOOTING DETAIL

COLUMN FOOTING SCHEDULE (SEE DETAIL B5/S-303)

MARK	LENGTH (Ft)	WIDTH (Ft)	DEPTH (Ft)	REINFORCING DISTRIBUTION (%)	TOP REINFORCING		BOTTOM REINFORCING		REMARKS
					LONGITUDINAL	TRANSVERSE	LONGITUDINAL	TRANSVERSE	
F1	11'-6"	11'-6"	2'-6"	NOTE 2	-	-	(12)#8	(12)#8	(4) SUPPORTED LEVELS
F2	8'-6"	8'-6"	2'-6"	NOTE 2	-	-	(7)#8	(7)#8	(4) SUPPORTED LEVELS
F3	15'-6"	13'-0"	4'-0"	NOTE 2	#5 @ 12"	#4 @ 16"	(16)#7	(14)#7	(4) SUPPORTED LEVELS
F4	10'-6"	6'-0"	3'-6"	NOTE 2	-	-	(11)#7	(6)#7	(4) SUPPORTED LEVELS

- NOTES:
1. CONCRETE STRENGTH  $F'_c$  = (SEE GENERAL CONCRETE NOTES)
  2. REINFORCING SHALL BE UNIFORMLY DISTRIBUTED WITHIN THE FOOTING.
  3. AT RECTANGULAR FOOTINGS, A HIGHER PERCENTAGE OF THE REINFORCING SHALL BE DISTRIBUTED IN THE BAND LENGTH. FOR EXAMPLE: IF THE FOOTING IS 10'-0" x 5'-0" WITH (10)#8 AND THE DISTRIBUTION OF 60% (6)#8 (10 BARS x 60%) SHALL BE PLACED WITHIN A 5'-0" BAND LENGTH AND (2)#8 ON EACH SIDE OF THE BAND LENGTH. IF AN ODD NUMBER OF REINFORCING BARS OCCUR ON ONE SIDE, THE CONTRACTOR SHALL ROUND-UP TO AN EVEN NUMBER OF BARS.

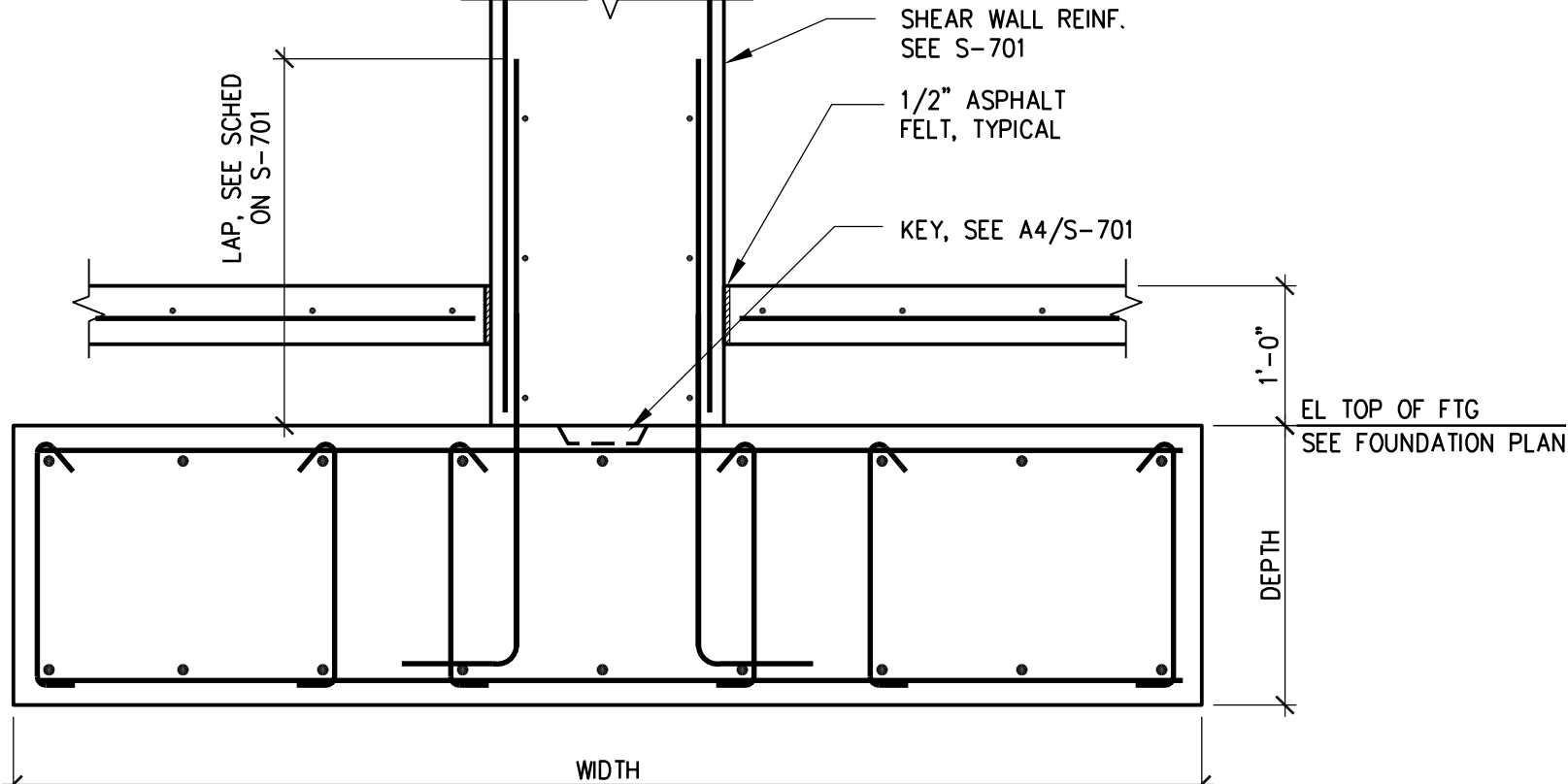


SECTION

SHEAR WALL FOOTING REINFORCING SCHEDULE

MARK	WIDTH (Ft)	LENGTH (Ft)	DEPTH (Ft)	LONGITUDINAL REINFORCING		TRANSVERSE REINFORCING		STIRRUPS
				TOP	BOTTOM	TOP	BOTTOM	
SWF1	12'-0"	66'-0"	4'-0"	(12)#7	(12)#7	#6 @ 10"	#6 @ 10"	#4 (6 LEGS) @ 16"
SWF2	12'-0"	68'-0"	4'-0"	(12)#7	(12)#7	#6 @ 10"	#6 @ 10"	#4 (6 LEGS) @ 16"
SWF3	12'-0"	50'-0"	4'-0"	(12)#7	(12)#7	#6 @ 10"	#6 @ 10"	#4 (6 LEGS) @ 16"
SWF4	12'-0"	70'-0"	4'-0"	(12)#7	(12)#7	#6 @ 10"	#6 @ 10"	#4 (6 LEGS) @ 16"

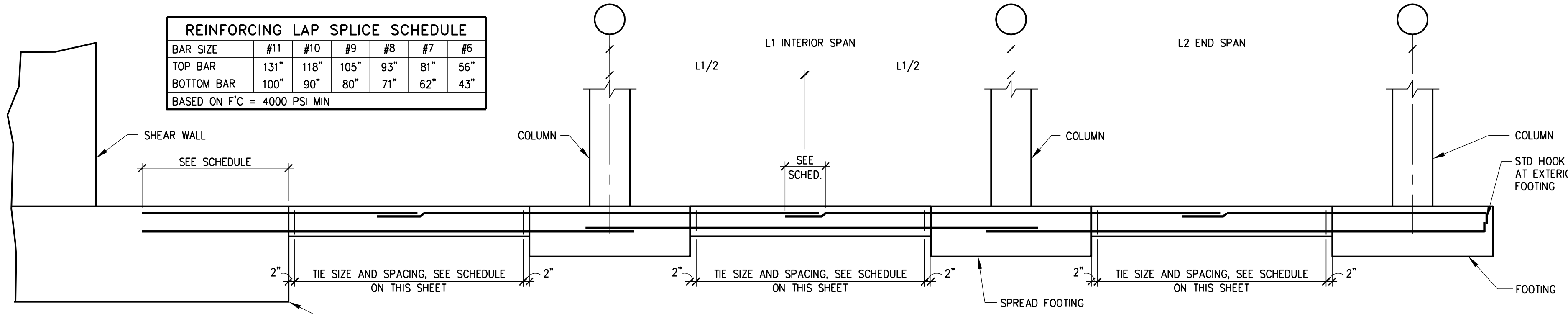
NOTE: FOR ADDED BARS AT SHEAR WALL ENDS, SEE PLAN SHEET S-101.



A7 SHEAR WALL FOOTING REINF DETAIL

REINFORCING LAP SPLICE SCHEDULE					
BAR SIZE	#11	#10	#9	#8	#7
TOP BAR	131"	118"	105"	93"	81"
BOTTOM BAR	100"	90"	80"	71"	62"

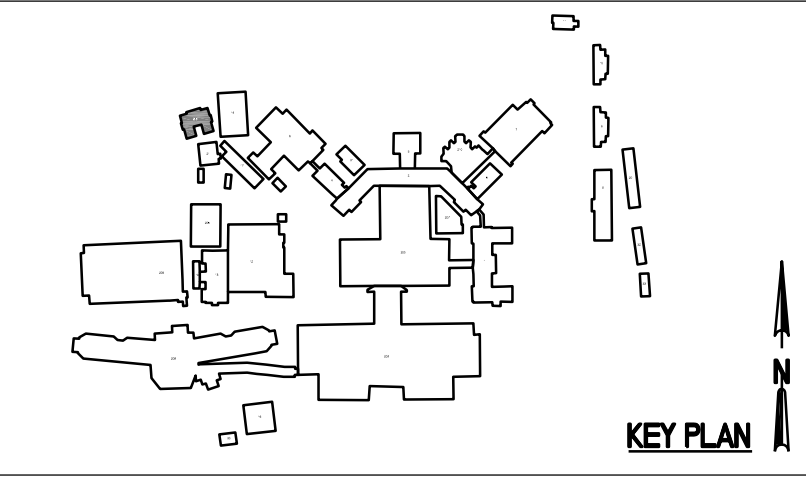
BASED ON  $F'_c$  = 4000 PSI MIN



A2 TIE BEAM REINFORCING DETAIL

ADDENDUM A	09/17/12
ISSUED FOR BIDS	09/22/11
Revisions	Date

CONSULTANTS:	



ARCHITECT/ENGINEERS:

**WALKER**

PARKING CONSULTANTS

135 Main Street  
Suite 1030  
San Francisco, CA 94105  
415.644.0630 Ph  
415.644.0637 Fax



Drawing Title

**FOUNDATION SCHEDULES AND DETAILS**

Approved Project Director

Medical Center Director: LAWRENCE H CARROLL

Chief Engineer: DRK MINEMA

Project Title

**PARKING AND EMERGENCY RESPONSE STRUCTURE**

Location

**SPVA MEDICAL CENTER**

Date

APRIL 2011

Project Number

**662-611**

Building Number

**211**

Drawing Number

**S-303**

Sht. 74 of 120

Office of Construction and Facilities Management

Department of Veterans Affairs