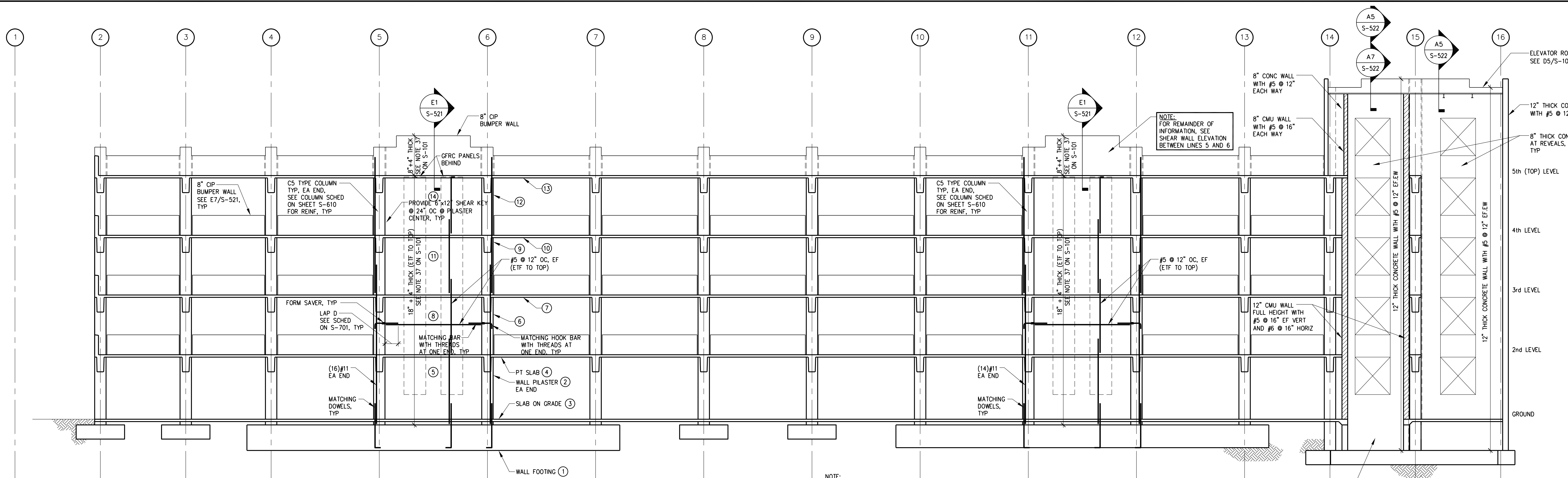
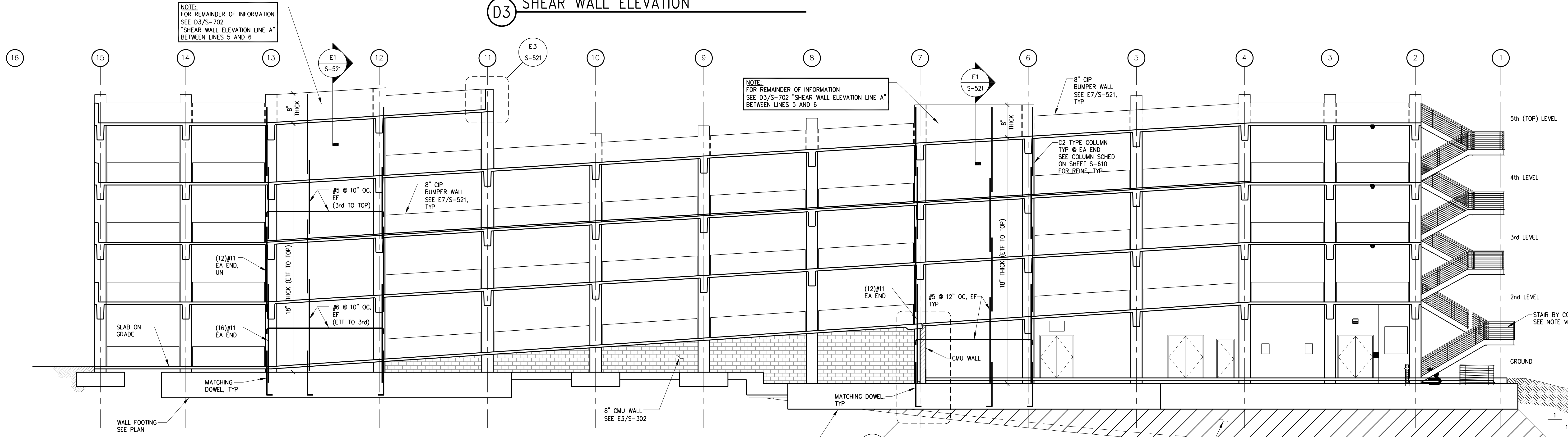


three inches = one foot
one and one half inches = one foot
one inch = one foot
three quarters inch = one foot
one half inch = one foot
three eighths inch = one foot
one quarter inch = one foot
one eighth inch = one foot



LINE A - VIEW NORTH
D3 SHEAR WALL ELEVATION



LINE C - VIEW SOUTH
B3 SHEAR WALL ELEVATION

- SHEET NOTES:**
- SEE SHEET S-001 FOR GENERAL NOTES.
 - VERIFY ALL DIMENSIONS WITH ARCHITECTURAL DRAWINGS.
 - FOR REINFORCING LAP SPLICES, EMBEDMENT LENGTHS, HOOKS, DETAILS, ETC., SEE THE TYPICAL SHEAR WALL DETAILS AND REINFORCING SCHEDULE ON SHEET S-701.
 - REINFORCING AT WALL INTERSECTIONS SHALL BE PER A6/S-002.
 - REINFORCING AROUND WALL OPENINGS SHALL BE PER A4/S-002.
 - CONTINUE BEAM TOP AND BOTTOM LONGITUDINAL REINFORCING CONTINUOUS THROUGH WALLS, TYPICAL AT ALL LEVELS. BEAM STIRRUPS SHALL START 2" FROM FACE OF WALL. SEE DETAILS A2/S-701 AND C2/S-701.
 - ALL TIES IN THE END OF WALL REINFORCING ARE #4 AT 4" ON CENTER, UNLESS NOTED.

CONSULTANTS:		ARCHITECT/ENGINEERS:		Drawing Title SHEAR WALL ELEVATIONS		Project Title PARKING AND EMERGENCY RESPONSE STRUCTURE		Project Number 662-611		Office of Construction and Facilities Management Department of Veterans Affairs	
		WALKER PARKING CONSULTANTS 135 Main Street Suite 1030 San Francisco, CA 94105 415.644.0630 Ph 415.644.0637 Fax						Building Number 211			
ADDENDUM A ISSUED FOR BIDS Revisions								Drawing Number S-702			
09/17/12 09/22/11 Date						Approved Project Director Medical Center Director: LAWRENCE H. CARROLL Chief Engineer: DFK MINEMA		Location SPVA MEDICAL CENTER		Sht. 84 of 120	
						Date APRIL 2011		Checked Drawn			