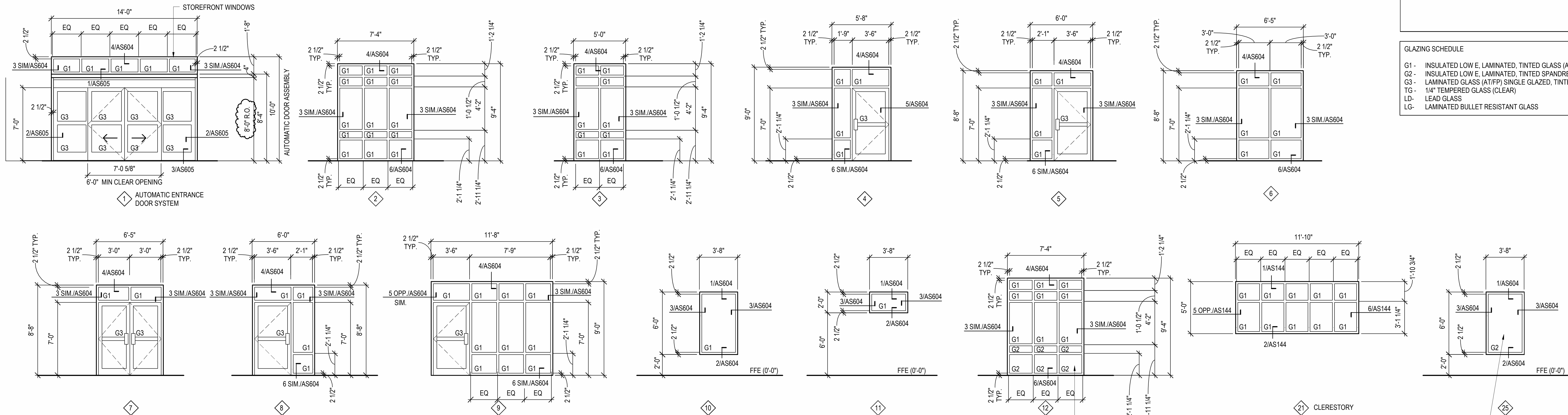


EXTERIOR STOREFRONT ELEVATIONS

SCALE: 1/4" = 1'-0"



GENERAL NOTES

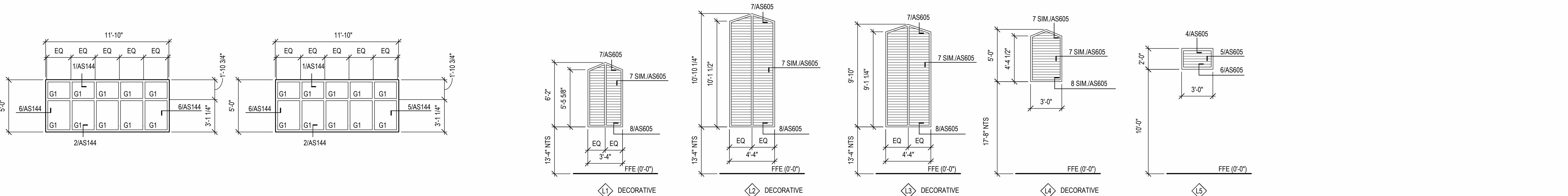
- OVERALL DIMENSIONS ARE NOMINAL, FIELD VERIFY ALL DIMENSIONS PRIOR TO FABRICATION.
- STOREFRONT DOOR SUBFRAMES NOT SHOWN.

GLAZING SCHEDULE

- G1 - INSULATED LOW E, LAMINATED, TINTED GLASS (AT/FP)
G2 - INSULATED LOW E, LAMINATED, TINTED SPANDREL GLASS (AT/FP)
G3 - LAMINATED GLASS (AT/FP) SINGLE GLAZED, TINTED
TG - 1/4" TEMPERED GLASS (CLEAR)
LD - LEAD GLASS
LG - LAMINATED BULLET RESISTANT GLASS

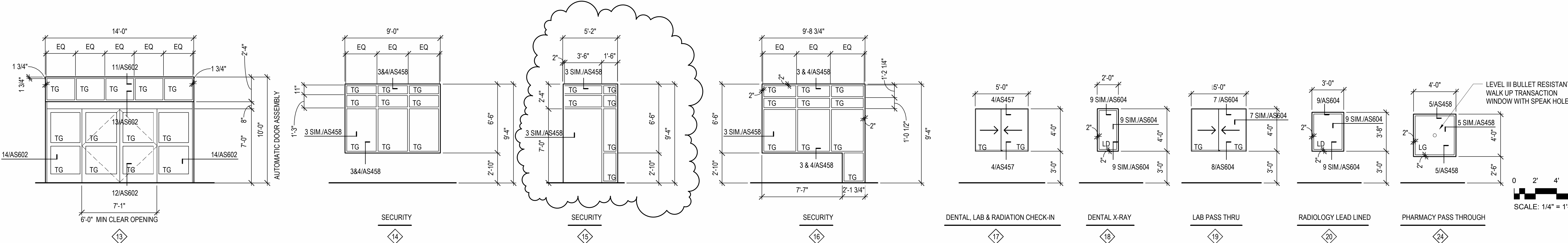
LOUVER ELEVATIONS

SCALE: 1/4" = 1'-0"



INTERIOR STOREFRONT AND WINDOW ELEVATIONS

SCALE: 1/4" = 1'-0"



FINAL SUBMISSION

CONSULTANTS:

CIVIL:
KENNETH HORNE & ASSOCIATES
7201 NORTH 9TH AVENUE, STE. 6
PENSACOLA, FLORIDA 32504
PH: (850) 471-0005
FX: (850) 471-0053

COMMENTS:
SCHMIDT CONSULTING GROUP, INC.
139 EAST GOVERNMENT STREET
PENSACOLA, FLORIDA 32502
PH: (850) 438-0050
FX: (850) 432-8611

SURVEYORS:
KCI TECHNOLOGIES, INC.
10401 HIGHLAND MANOR DRIVE, SUITE 120
TAMPA, FLORIDA 33610
PH: (813) 740-2300

LANDSCAPE ARCHITECT:
CSA GROUP, INC.
6300 PICCADILLY SQUARE DRIVE
MOBILE, ALABAMA 36689
PH: (251) 344-4023
FX: (251) 344-4022

ARCHITECTURE:
BULLOCK TICE ASSOCIATES, INC.
809 EAST CERVANTES STREET
PENSACOLA, FL 32501
PH: (850) 434-5444
FX: (850) 432-8208

ARCHITECT/ENGINEERS:



BES DESIGN/BUILD, LLC
766 Middle St, Fairhope, AL 36532
Phone: 251.990.5778 Fax: 251.990.3716

Drawing Title
WINDOW ELEVATIONS

Approved: Project Director

Project Title
PANAMA CITY
JOINT OUTPATIENT CLINIC
VA GULF COAST HEALTH CARE

Location
PANAMA CITY, FLORIDA

Date
MARCH 2012

Checked
BM

Drawn
TWMF

Project Number
520-326

Building Number
-

Drawing Number
AS603

Dwg. 40 of 42

Office of
Construction
and Facilities
Management

