

# VA NEBRASKA - WESTERN IOWA HEALTH CARE SYSTEM BUILDING 8 RESTROOMS, MOVE! CLINIC, AND ULTRASOUND REMODELS

4101 Woolworth Avenue  
OMAHA, NEBRASKA 68105

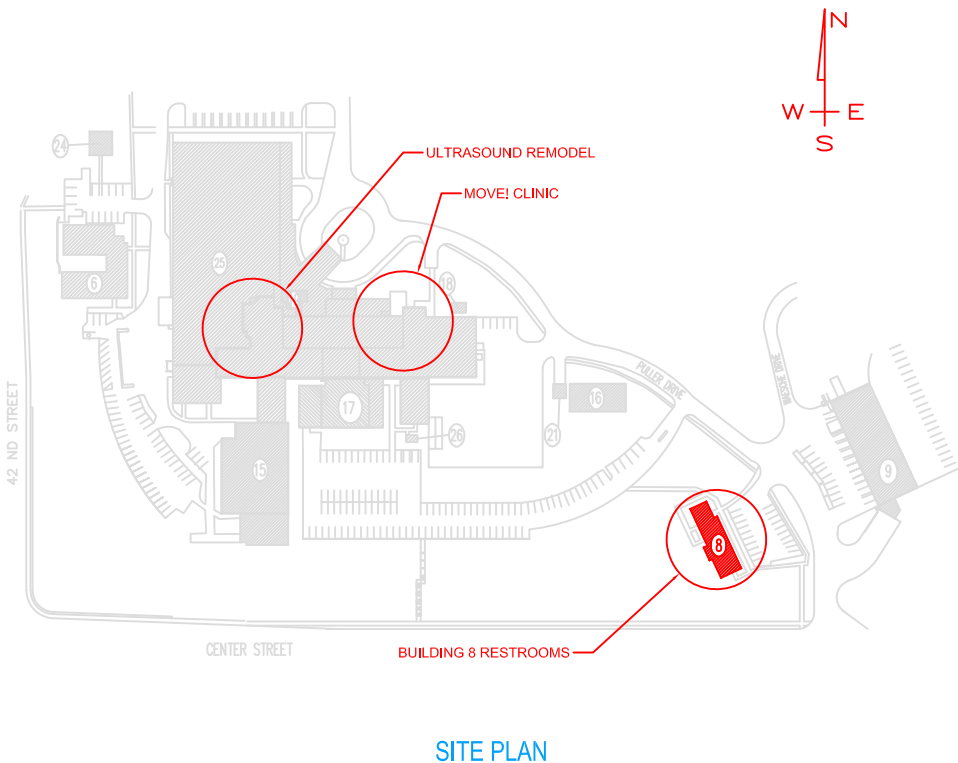
| DWG # | DRAWING TITLE                               | DATE ISSUED | REV DATE | DWG # | DRAWING TITLE | DATE ISSUED | REV DATE | DWG # | DRAWING TITLE | DATE ISSUED | REV DATE | INFECTION CONTROL NOTES |  |
|-------|---|-------------|----------|-------|---------------|-------------|----------|-------|---------------|-------------|----------|-------------------------|--|
| 1     | COVER SHEET, LEGENDS, ABBREV. & SHEET INDEX |             |          |       |               |             |          |       |               |             |          |                         | 1. SPECIFY NEGATIVE AIR MACHINES WITH HEPA FILTER. BE PROVIDED ON THE PROJECT WITH A SCHEDULED, DOCUMENTED, FILTER CHANGE.   |
|       |   |             |          |       |               |             |          |       |               |             |          |                         | 2. SPECIFY THAT THE CONSTRUCTION PROJECT BE COMPLETELY SEPARATED BY A SEALED WALL WITH A FIRE-RATED BARRIER FROM THE ADJACENT FUNCTIONING SPACES.  |
| 2     | BUILDING 8 RESTROOMS                        |             |          |       |               |             |          |       |               |             |          |                         | 3. SPECIFY PREDETERMINED CONSTRUCTION ROUTES AND TEMPORARY PARTITIONS TO PROMOTE CONSTRUCTION PATH SEGREGATION.  |
| 3     | MOVE! CLINIC                                |             |          |       |               |             |          |       |               |             |          |                         | 4. PROVIDE STICKY MATS AND WET MATS WITH A SPECIFIC CHANGE OUT SCHEDULE.   |
| 4     | ULTRASOUND                                  |             |          |       |               |             |          |       |               |             |          |                         | 5. CONTRACTOR TO TRANSPORT MATERIALS (SPECIFICALLY DEMOLISHED MATERIAL) IN CLOSED CONTAINERS ONLY. THE WHEELS OF THE CART ARE REQUIRED TO BE WIPED DOWN BEFORE LEAVING THE CONSTRUCTION ZONE.  |
| 5     | MISC. DETAILS                               |             |          |       |               |             |          |       |               |             |          |                         | 6. IF CEILING TILES OUTSIDE OF THE PROJECT PERIMETER NEED TO BE ACCESSED, A TEMPORARY BARRIER SHALL BE PLACED AND SEALED AROUND IT. THE CONTRACTOR MUST BRING A VACUUM INTO THE SEALED AREA WITH HIM AND VACUUM, BOTH THE AREA AND HIMSELF BEFORE LEAVING THE ENCLOSURE. |
|       |   |             |          |       |               |             |          |       |               |             |          |                         |  |
|       |   |             |          |       |               |             |          |       |               |             |          |                         |  |
|       |   |             |          |       |               |             |          |       |               |             |          |                         |  |
|       |   |             |          |       |               |             |          |       |               |             |          |                         |  |
|       |   |             |          |       |               |             |          |       |               |             |          |                         |  |
|       |   |             |          |       |               |             |          |       |               |             |          |                         |  |
|       |   |             |          |       |               |             |          |       |               |             |          |                         |  |

## MATERIALS LEGEND

|  |   |  |                          |
|--|---|--|--------------------------|
|  | PLYWOOD   |  | CMU                      |
|  | RIGID INSULATION                                      |  | BRICK                    |
|  | INSULATION - BATT OR BLANKET                          |  | CERAMIC TILE/QUARRY TILE |
|  | EARTH (FILL)  |  | GRANITE OR MARBLE        |
|  | EARTH (UNDISTURBED)                                   |  | STEEL                    |
|  | GRANULAR FILL   |  | WOOD FRAMING             |
|  | METAL LATH OR PLASTER OR STUCCO                       |  | SHIM OR BLOCKING         |
|  | VENEER PLASTER OR POURED CONCRETE OR PRECAST CONCRETE |  | FINISHED WOOD            |
|  | GROUT, GBS OR PLASTER                                 |  | OUT STONE                |

## SYMBOLS LEGEND

|  |  |  |  |
|--|--|--|--|
|  | MEN'S BATH   |  | ROOM NUMBER  |
|  | DOOR NUMBER  |  | INTERIOR PARTITION TYPE: SEE SHEET A- FOR ADDITIONAL INFORMATION |
|  | SECTION OR EXT. ELEVATION REFERENCED TO DRAWINGS EX: SECTION 7 ON SHEET A7-1 |  | DETAIL REFERENCED TO DRAWINGS EX: DET 83 ON SHEET A7-1           |
|  | WORK POINT OR FLOOR ELEVATION  |  | REFLECTIVE CEILING HEIGHTS                                       |
|  | WINDOW TYPE  |  | DEMO PLAN CODED NOTE   |
|  | FLOOR PLAN CODED NOTE  |  | REVISIONS (ISSUE)  |
|  | COLUMN LINE (NEW)  |  | COLUMN LINE (EXISTING)   |
|  | INTERIOR ELEVATION MARKER  |  | WINDOW TYPE  |

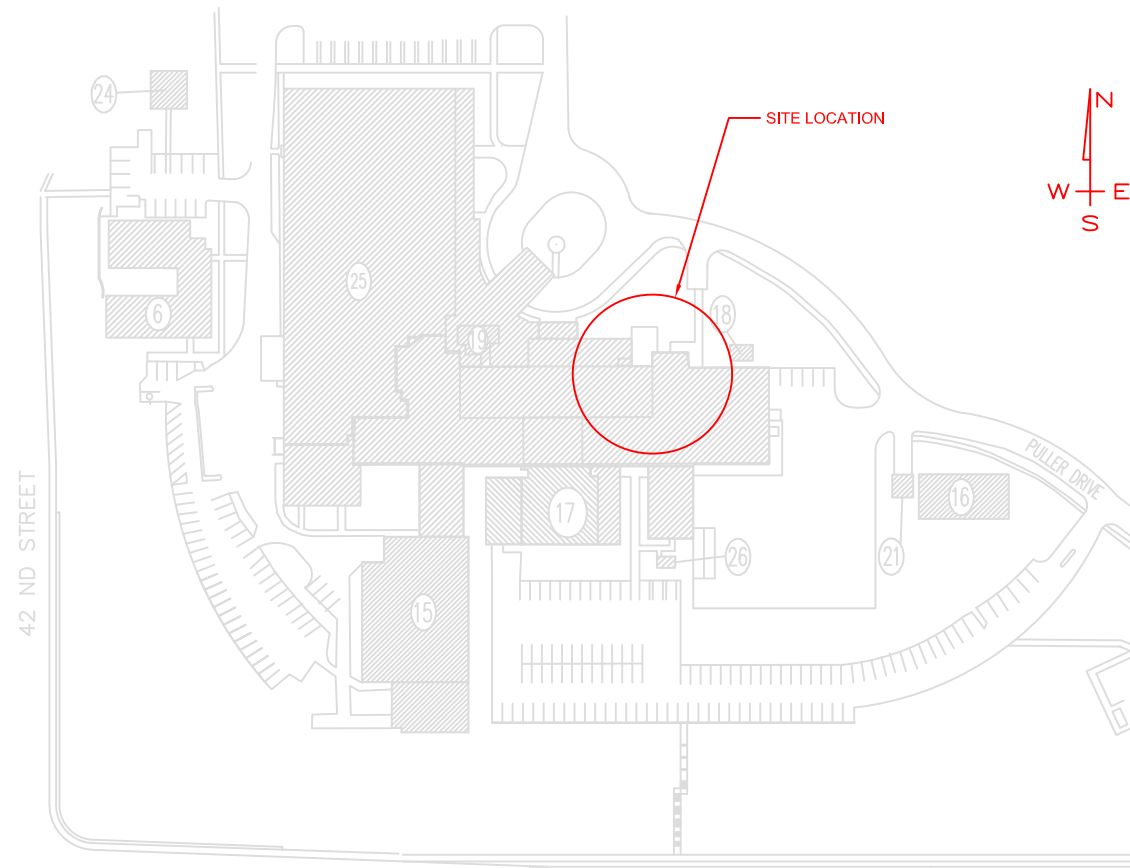


SITE PLAN

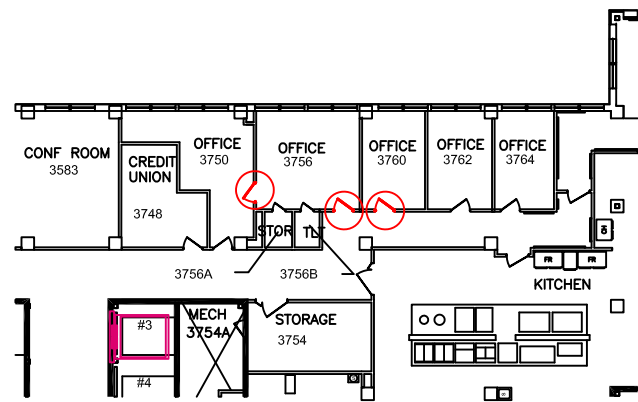
Scale: NONE

|                     |  |                             |  |   |   |                                     |                               |
|---------------------|--|-----------------------------|--|---|---|-------------------------------------|-------------------------------|
| <b>CONSULTANTS:</b> |  | <b>ARCHITECT/ENGINEERS:</b> |  | <b>Drawing Title</b><br>COVER SHEET, LEGENDS, ABBREV. & SHEET INDEX | <b>Project Title</b><br>BUILDING 8 RESTROOMS, MOVE! CLINIC, AND ULTRASOUND REMODELS | <b>Project Number</b><br>636-18-125 | <b>Engineering Department</b> |
|                     |  |                             |  | <b>Approved Project Director</b>                                    | <b>Location</b><br>NW1 - OMAHA  | <b>Building Number</b>              |                               |
|                     |  |                             |  |   | <b>Drawing Number</b>   |                                     |                               |
| <b>Revisions</b>    |  |                             |  | <b>Date</b><br>OCTOBER 24, 2017                                     | <b>Checked</b>  | <b>Drawn</b>                        | <b>Page 1 of 7</b>            |



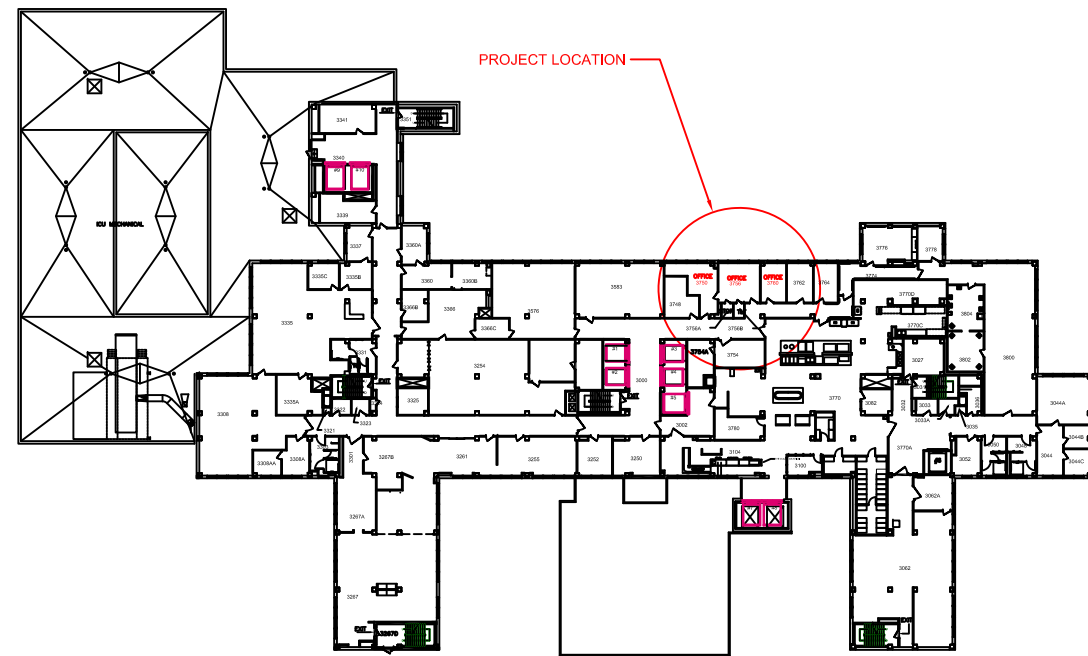


1 SITE PLAN

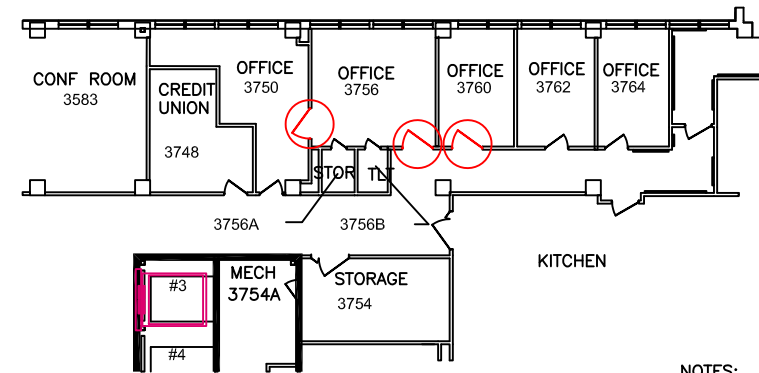


3 DEMOLITION PLAN

NOTE:  
1. Remove doors and frames  
in locations indicated. Refer  
to SOW and Specs for details



2 PROJECT LOCATION - 3RD FLOOR



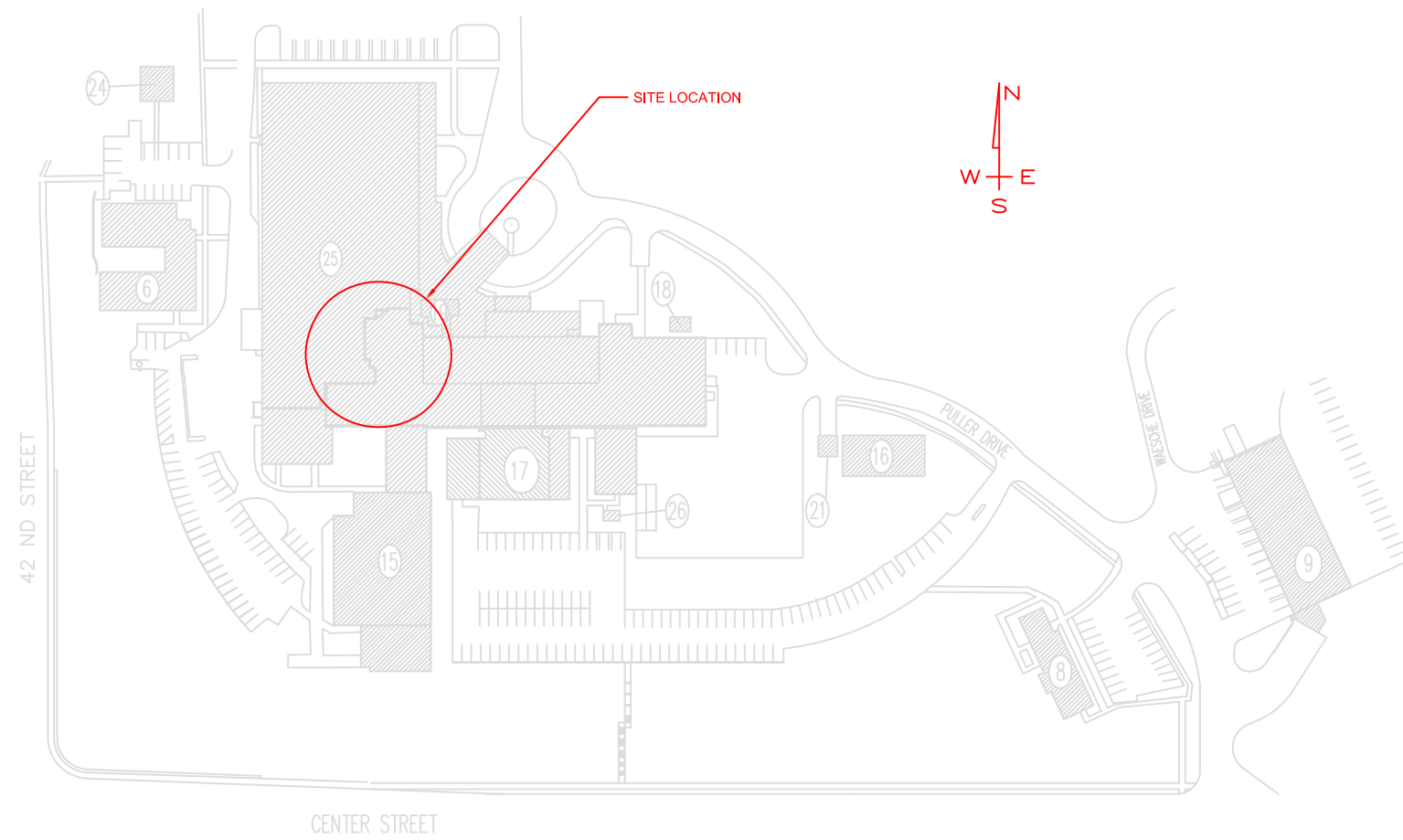
4 DOOR/FRAME REPLACEMENT

NOTES:  
1. Match existing floor and walls  
2. All doors shall be 48" wide and 78" tall.  
Refer to SOW and Specs for details  
3. Maintain existing swing direction

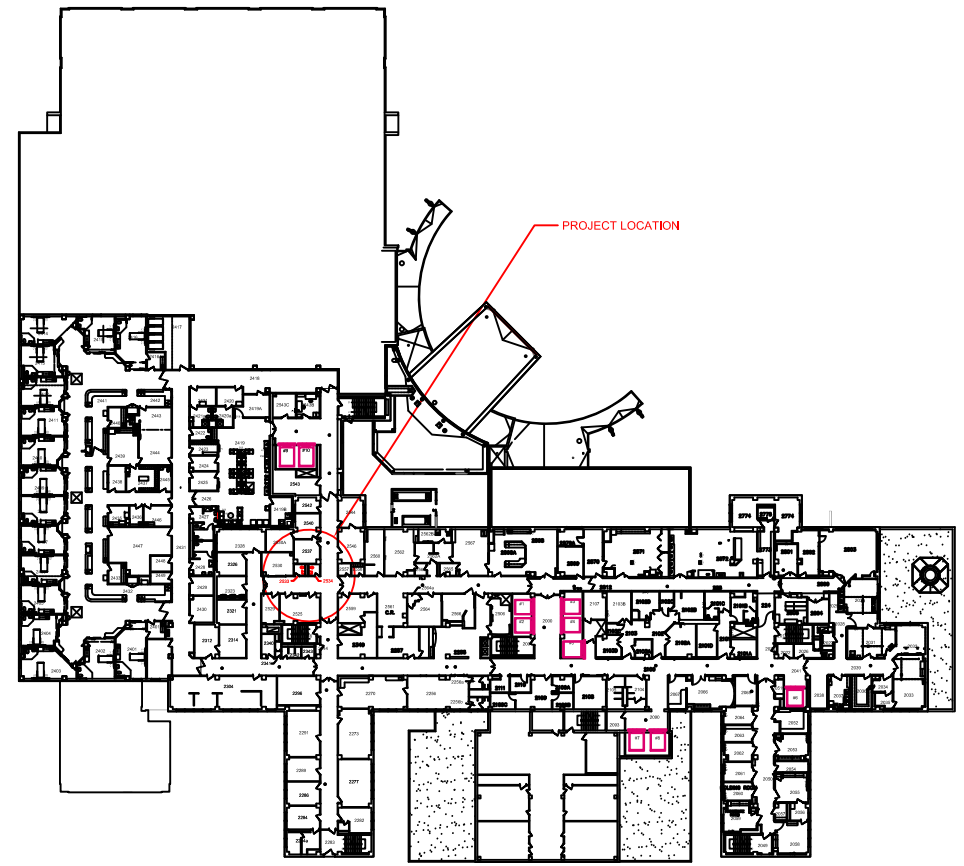
Scale: NONE

|              |  |                      |  |                               |  |                              |                           |            |
|--------------|--|----------------------|--|-------------------------------|--|------------------------------|---------------------------|------------|
| CONSULTANTS: |  | ARCHITECT/ENGINEERS: |  | Drawing Title<br>MOVE! CLINIC | Project Title<br>BUILDING 8 RESTROOMS,<br>MOVE! CLINIC, AND<br>ULTRASOUND REMODELS | Project Number<br>636-18-125 | Engineering<br>Department |            |
|              |  |                      |  | Approved Project Director     | Location<br>NWI - OMAHA  | Drawing Number               |                           |            |
| Revisions    |  |                      |  | Date                          | Date<br>OCTOBER 24, 2017   | Checked                      | Drawn                     | Day 3 of 7 |

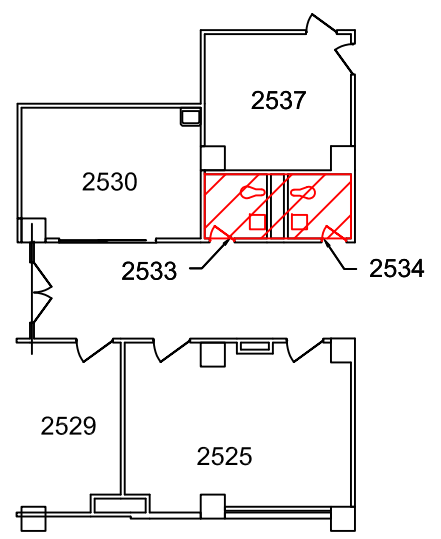
one eighth inch = one foot  
one quarter inch = one foot  
three eighths inch = one foot  
one half inch = one foot  
one inch = one foot  
one and one half inches = one foot  
two inches = one foot  
three inches = one foot



1 SITE PLAN

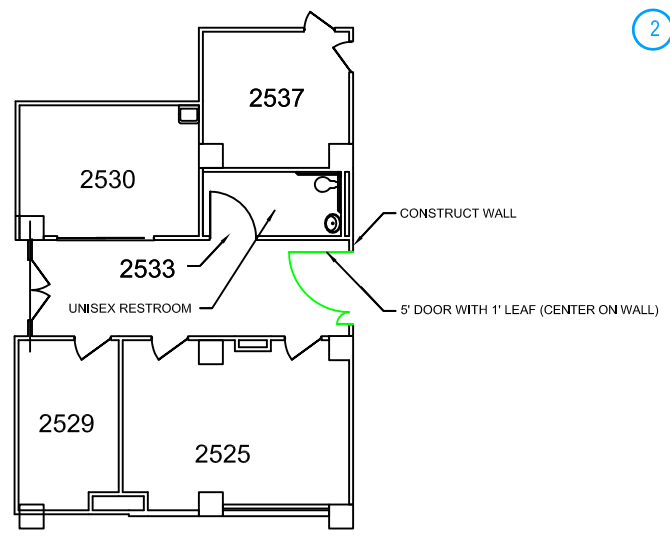


2 PROJECT LOCATION - 2ND FLOOR



3 DEMOLITION PLAN


NOTE:  
1. Refer to SOW and Specs for details



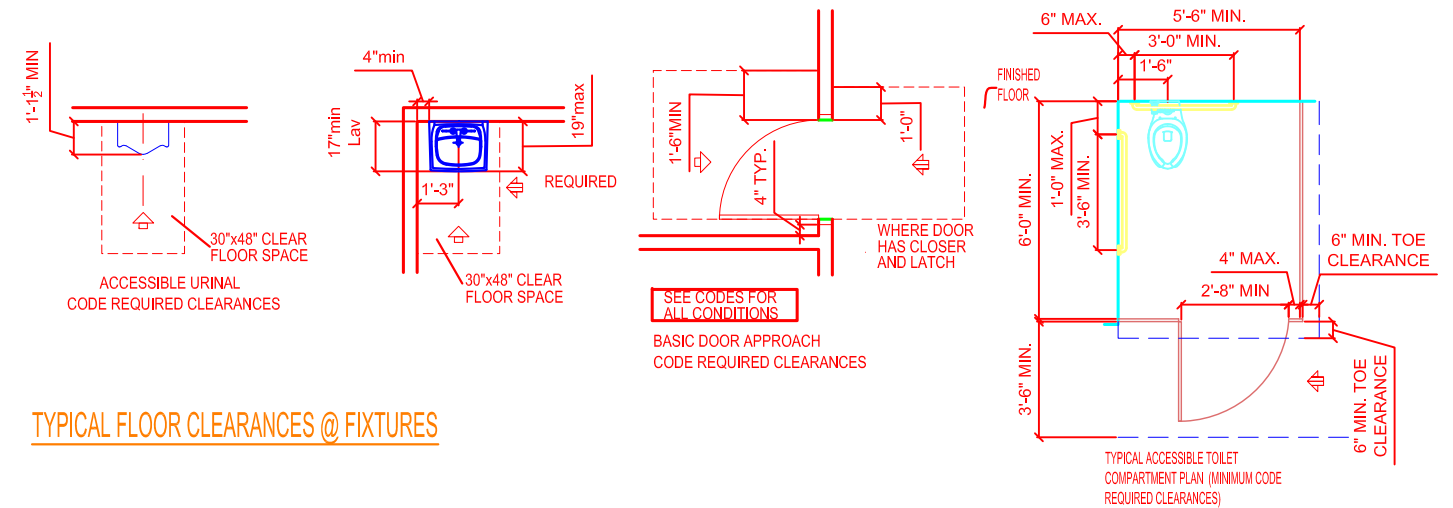
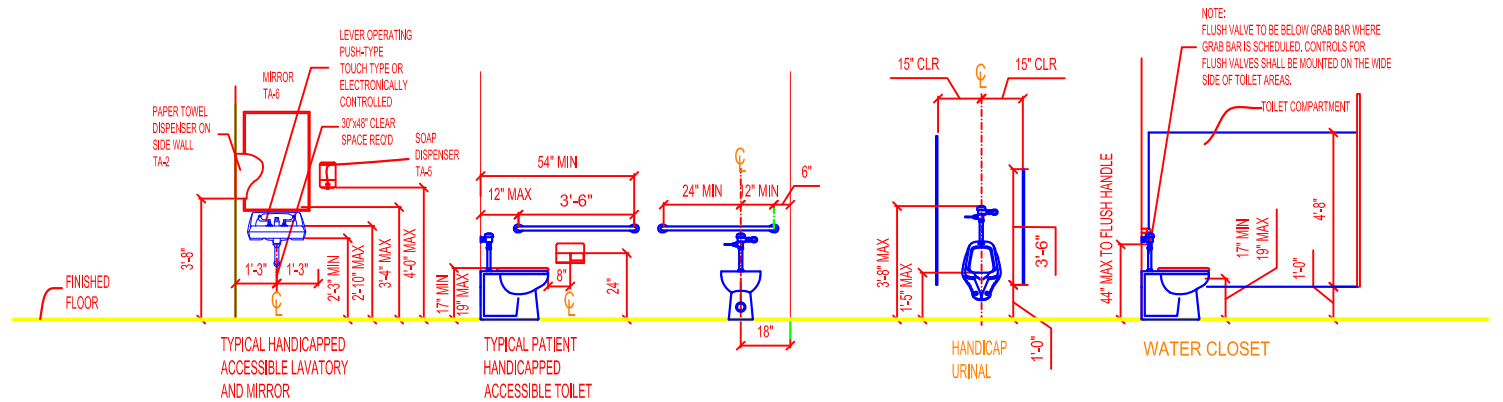
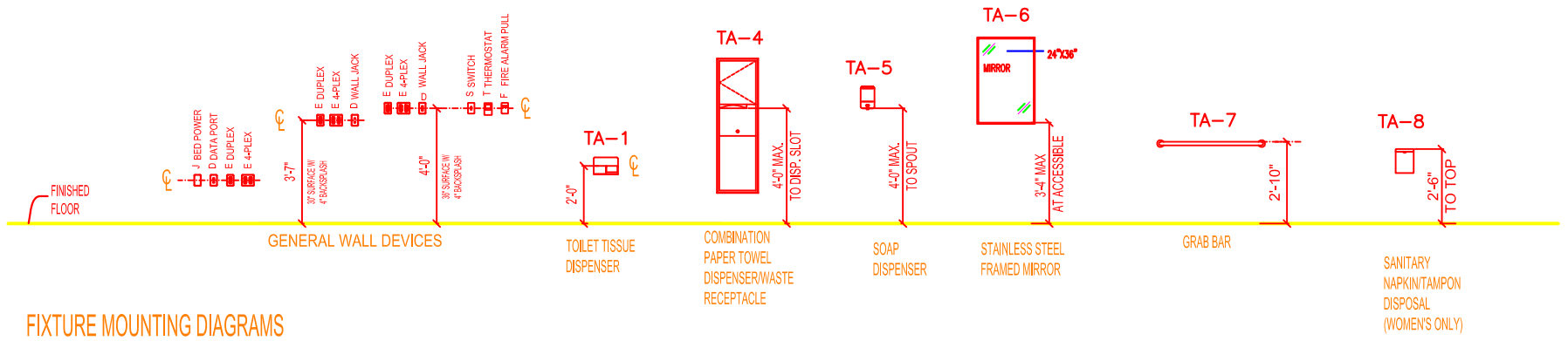
4 RESTROOM AND DOOR INSTALLATION

- NOTES:
1. Match existing floor and walls in hallway
  2. All doors shall be 78" tall. Refer to SOW and Specs for details
  3. Restroom door shall be 48" wide
  4. Door shall have push button operator and locking mechanism
  5. Restroom shall include TA-1,4,5,6,7,8. See sheet 5 for details
  6. Install unisex plaque

Scale: NONE

|  |  |                     |  |  |  |                             |  |   |  |  |  |                                     |  |  |  |
|--|--|---------------------|--|--|--|-----------------------------|--|---|--|--|--|-------------------------------------|--|--|--|
|  |  | <b>CONSULTANTS:</b> |  |  |  | <b>ARCHITECT/ENGINEERS:</b> |  | <b>Drawing Title</b><br><b>ULTRASOUND</b> |  | <b>Project Title</b><br><b>BUILDING 8 RESTROOMS, MOVE! CLINIC, AND ULTRASOUND REMODELS</b> |  | <b>Project Number</b><br>636-18-125 |  | <b>Engineering Department</b><br> |  |
|  |  |                     |  |  |  |                             |  | <b>Approved Project Director</b>          |  | <b>Location</b><br>NW1 - OMAHA   |  | <b>Building Number</b>              |  |  |  |
|  |  |                     |  |  |  |                             |  |   |  | <b>Date</b><br>OCTOBER 24, 2017  |  | <b>Drawing Number</b><br>Day 4 of 7 |  |  |  |

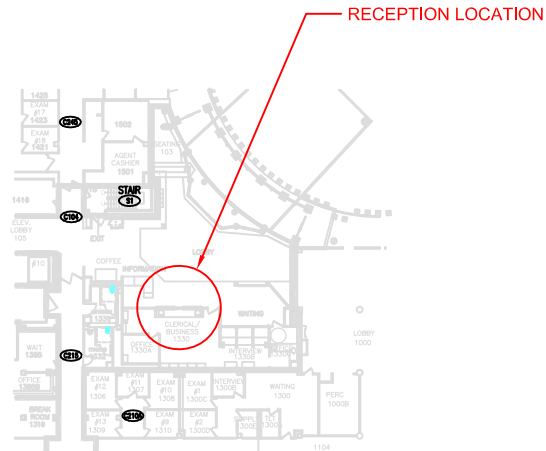
one eighth inch = one foot  
one quarter inch = one foot  
three eighths inch = one foot  
one half inch = one foot  
three quarters inch = one foot  
one inch = one foot  
one and one half inches = one foot  
two inches = one foot  
three inches = one foot



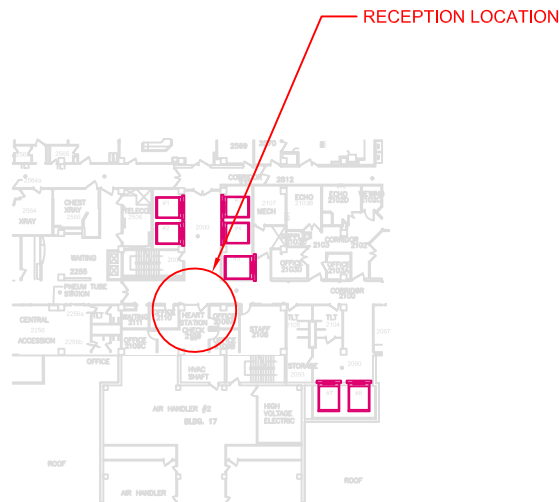
Scale: NONE

|                     |             |                             |  |  |  |                                     |                               |                    |
|---------------------|-------------|-----------------------------|--|--|--|-------------------------------------|-------------------------------|--------------------|
| <b>CONSULTANTS:</b> |             | <b>ARCHITECT/ENGINEERS:</b> |  | <b>Drawing Title</b><br><b>MISC. DETAILS</b> | <b>Project Title</b><br><b>BUILDING 8 RESTROOMS, MOVE! CLINIC, AND ULTRASOUND REMODELS</b> | <b>Project Number</b><br>636-18-125 | <b>Engineering Department</b> |                    |
|                     |             |                             |  | <b>Approved Project Director</b>             | <b>Location</b><br>NW1 - OMAHA   | <b>Building Number</b>              |                               |                    |
| <b>Revisions</b>    | <b>Date</b> |                             |  |  | <b>Date</b><br>OCTOBER 24, 2017  | <b>Checked</b>                      | <b>Drawn</b>                  | <b>Dwg. 5 of 7</b> |

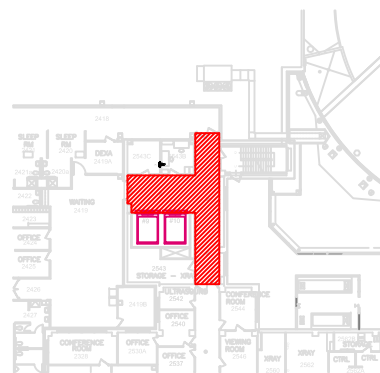
one eighth inch = one foot  
one quarter inch = one foot  
three eighths inch = one foot  
one half inch = one foot  
three quarters inch = one foot  
one inch = one foot  
one and one half inches = one foot  
two inches = one foot  
three inches = one foot



1 1st Floor, One Stop Shop, Lobby 1330

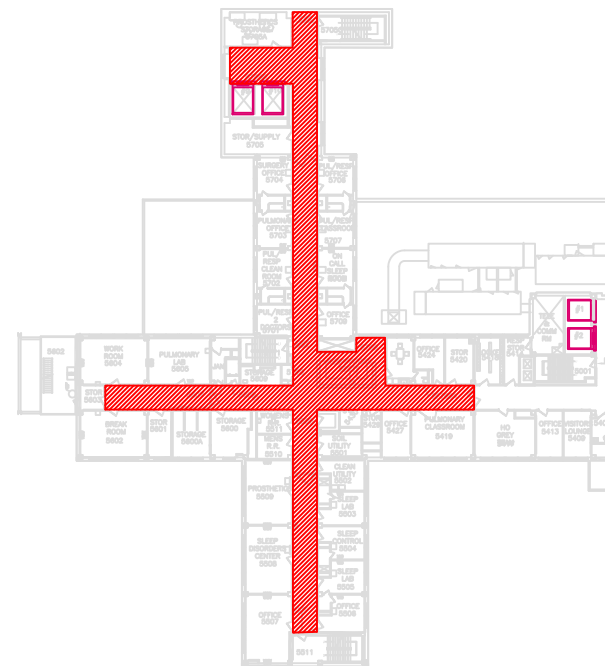


2 2nd Floor, Heart Station, Room 2109



Flooring = Approx. 680 SF  
Base = Approx. 160 LF

3 2nd Floor, Room 2543, Elevator Lobby




Flooring = Approx. 3,125 SF  
Base = Approx. 700 LF

4 5th Floor, Pulmonary/Respiratory/Sleep Lab

NOTES:  
1. Refer to SOW for details

Scale: NONE

|  |  |                     |  |  |  |                             |  |  |  |   |  |                                     |  |  |  |
|--|--|---------------------|--|--|--|-----------------------------|--|--|--|---|--|-------------------------------------|--|--|--|
|  |  | <b>CONSULTANTS:</b> |  |  |  | <b>ARCHITECT/ENGINEERS:</b> |  | <b>Drawing Title</b><br>RECEPTION AND FLOORING |  | <b>Project Title</b><br>BUILDING 8 RESTROOMS, MOVE1 CLINIC, AND ULTRASOUND REMODELS |  | <b>Project Number</b><br>636-18-125 |  | <b>Engineering Department</b><br> |  |
|  |  |                     |  |  |  |                             |  | <b>Approved Project Director</b>               |  | <b>Location</b><br>NWI - OMAHA  |  | <b>Building Number</b>              |  |  |  |
|  |  |                     |  |  |  |                             |  |  |  | <b>Date</b><br>OCTOBER 24, 2017   |  | <b>Drawing Number</b>               |  |  |  |
|  |  |                     |  |  |  |                             |  |  |  |   |  | <b>Day 6 of 7</b>                   |  |  |  |



A

I

W

I

C

I

C

I

II

I

II

II

II

A

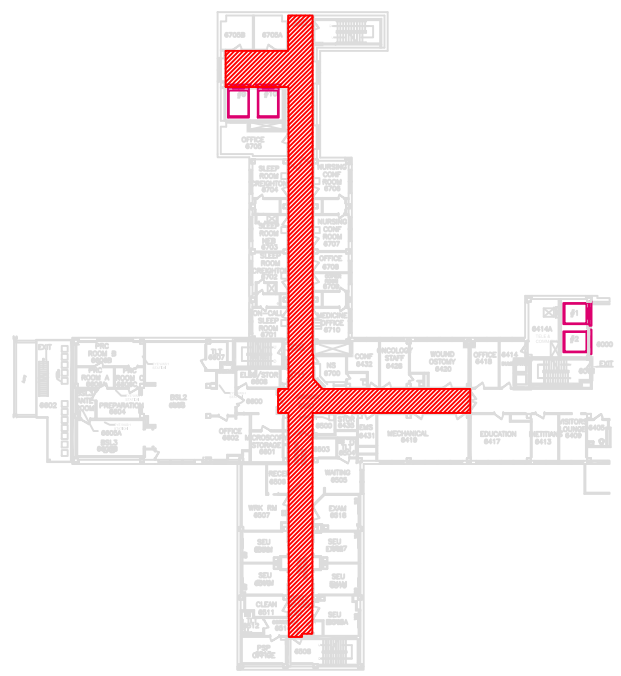
B

C

D

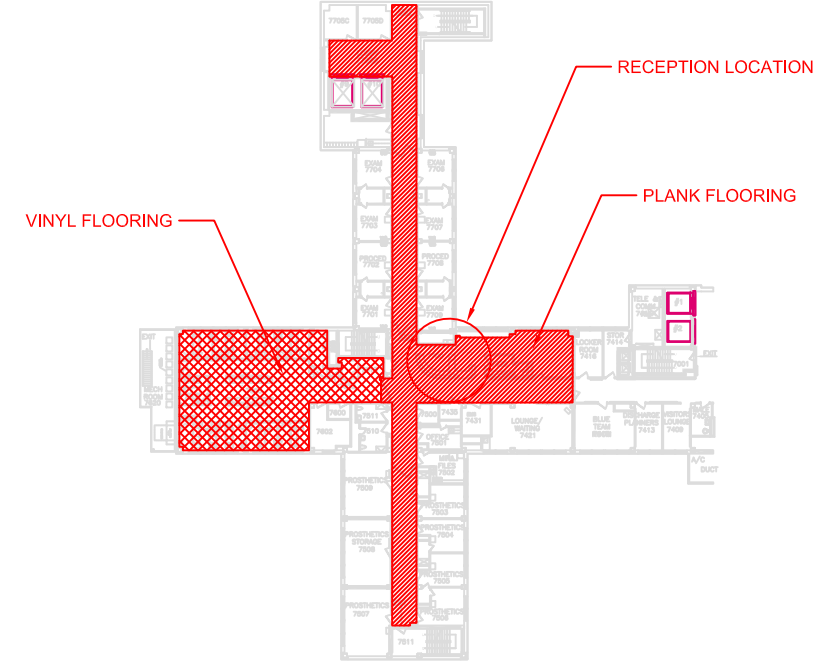
E

F



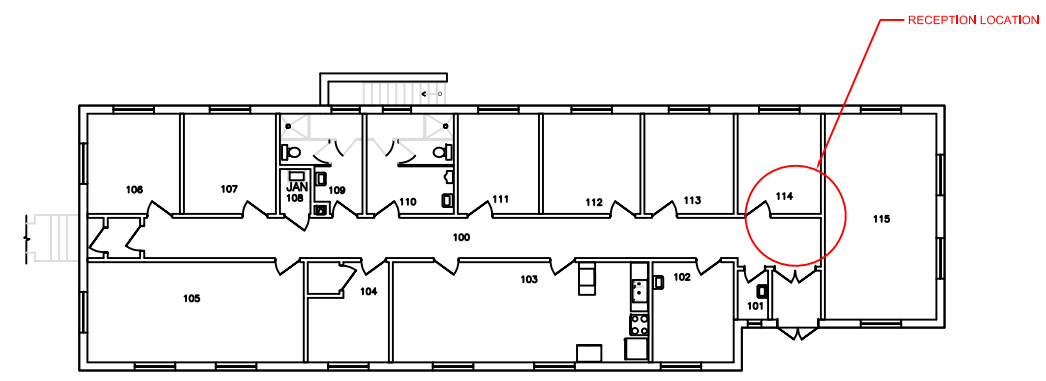
Flooring = Approx. 2,355 SF  
Base = Approx. 580 LF

5 6th Floor, West Wing



Plank = Approx. 3,085 SF  
Vinyl = Approx. 2,115 SF  
Base = Approx. 815 LF

6 7th Floor, Hematology/Oncology/Infusion



8 Building 8, Reception

NOTES:  
1. Refer to SOW for details

Scale: NONE

|  |  |              |  |                      |  |   |  |                              |                           |
|--|--|--------------|--|----------------------|--|---|--|------------------------------|---------------------------|
|  |  | CONSULTANTS: |  | ARCHITECT/ENGINEERS: |  | Drawing Title<br>RECEPTION AND FLOORING | Project Title<br>BUILDING 8 RESTROOMS,<br>MOVE! CLINIC, AND<br>ULTRASOUND REMODELS | Project Number<br>636-18-125 | Engineering<br>Department |
|  |  |              |  |                      |  | Approved Project Director               | Location<br>NWI - OMAHA  | Drawing Number               |                           |
|  |  |              |  |                      |  | Date<br>OCTOBER 24, 2017                | Checked  | Draw                         |                           |
|  |  |              |  |                      |  |   |  | Day 7 of 7                   |                           |