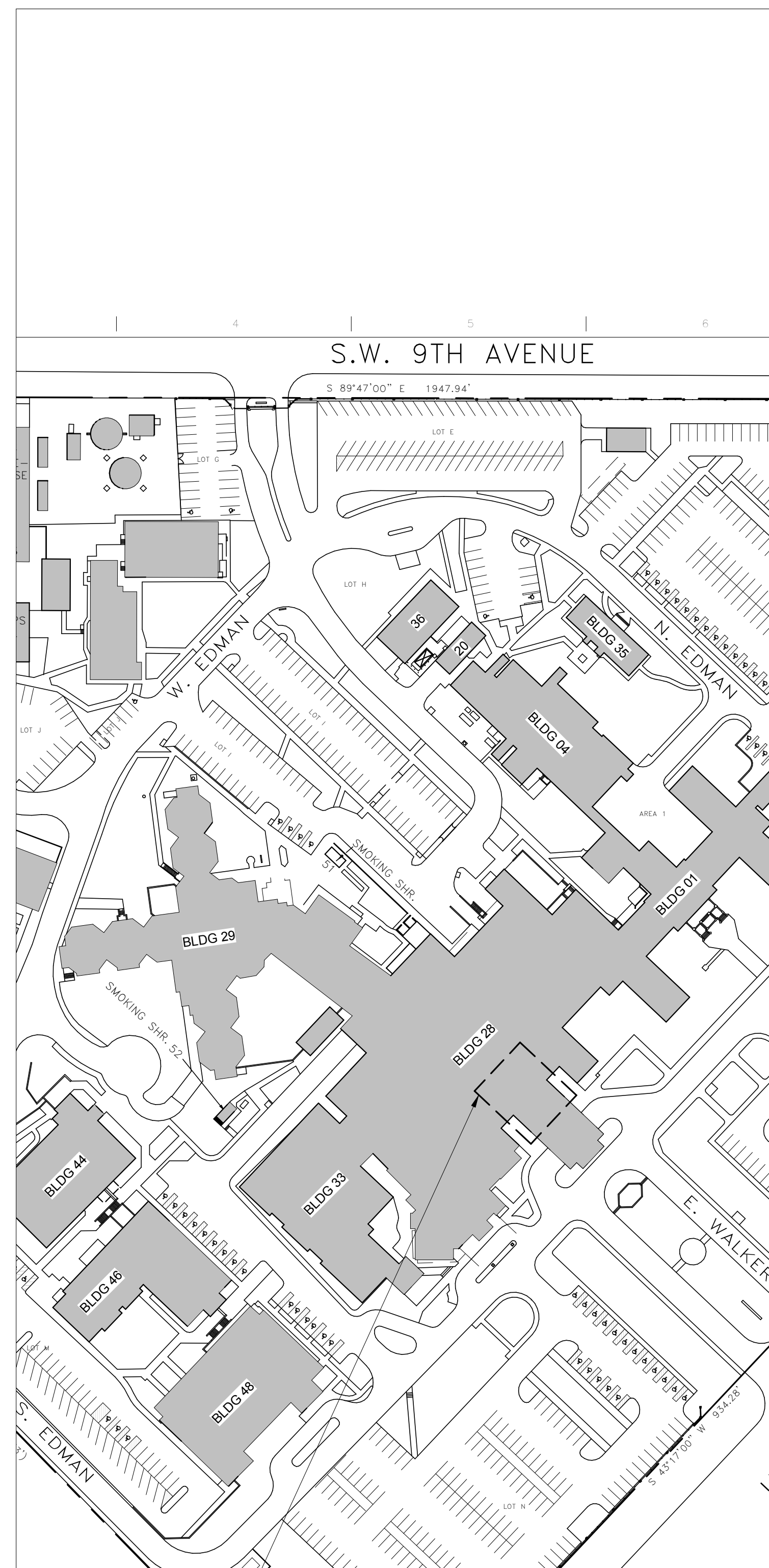


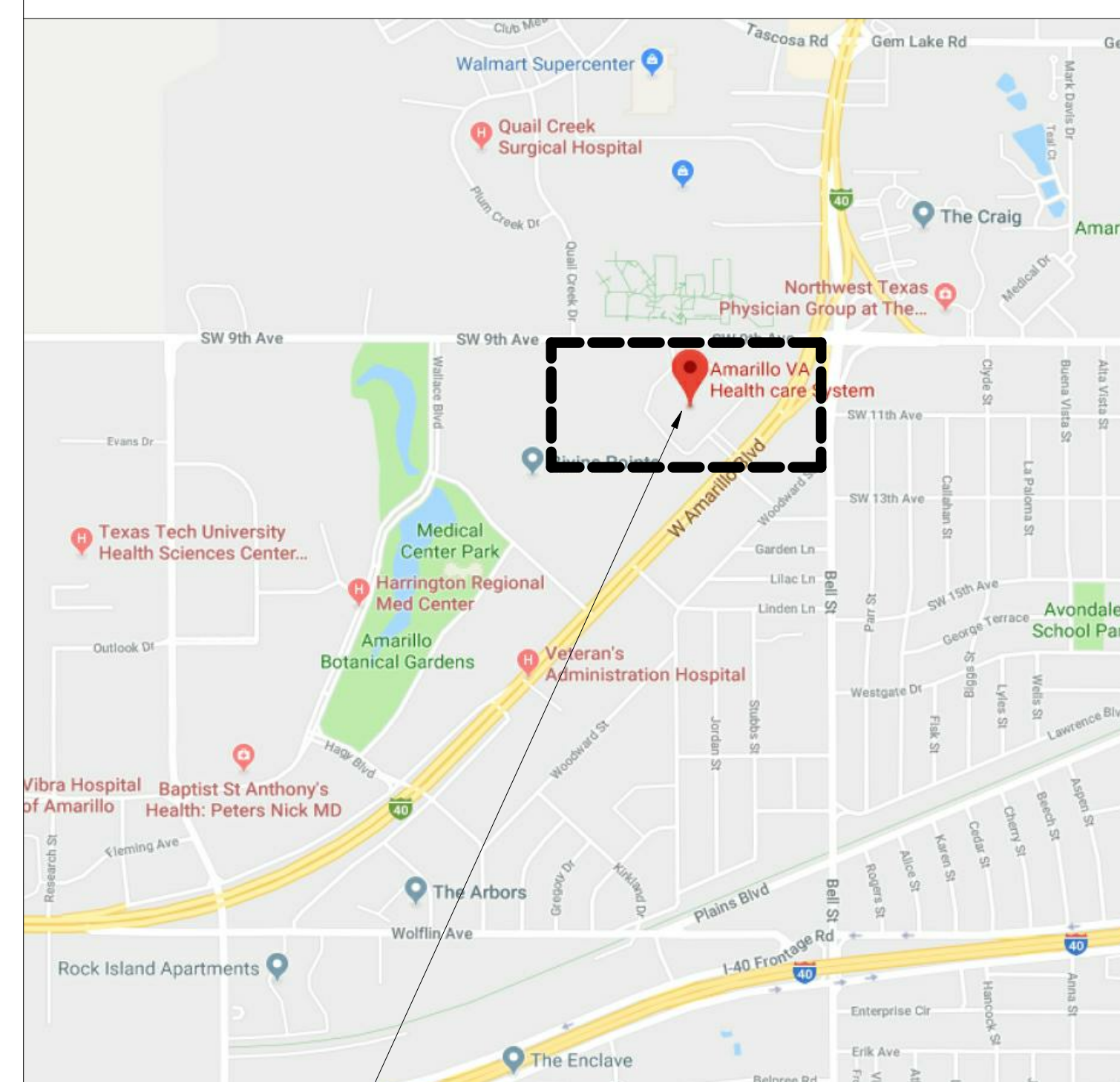
AMARILLO VA HEALTH CARE SYSTEM  
PLACE ELEVATOR CONTROLS BLDG 28  
6010 W. AMARILLO BLVD, AMARILLO, TX 79106

# 100% CONSTRUCTION DOCUMENTS

DRAWING LIST		
SHEET NUMBER	SHEET SEQUENCE	SHEET NAME
[01] GENERAL		
G-000	1	COVER SHEET
G-001	2	GENERAL INFORMATION
G-011	3	LIFE SAFETY PLAN
[02] ARCHITECTURAL DEMO		
AD-101	4	ARCHITECTURAL DEMOLITION
[03] ARCHITECTURE		
AS - 101	5	FLOOR PLANS
AS - 102	6	INTERIOR ELEVATIONS
[04] MECHANICAL		
MH - 101	7	MECHANICAL FLOOR PLANS
[05] ELECTRICAL		
ES - 101	8	ELECTRICAL FLOOR PLANS



— AREA OF WORK      AREA OF WORK



## — PROJECT LOCATION LOCATION MAP

## CONSULTANTS

**M.E.P. / T. ENGINEER**  
BROWN CONSULTING  
3505 OLSEN BLVD, SUITE 110  
AMARILLO, TX 79109  
[WWW.BROWNCONSULTINGENGINEERS.COM](http://WWW.BROWNCONSULTINGENGINEERS.COM)

## ARCHITECT



APPROVED: DIRECTOR

	APPROVED: ASSOCIATE DIRECTOR
--	------------------------------

APPROVED: ASSISTANT DIRECTOR

APPROVED: CHIEF ENGINEER

	Drawing Title
--	---------------

COVER SHEET

	APPROVED: CHIEF ENGINEER

	Project Title
--	---------------

REPLACE ELEVATOR  
CONTROLS BLDG 28

Location	AMARILLO VA HEALTH CARE SYSTEM 6010 W. AMARILLO BLVD, AMARILLO, TX 79106
----------	---

Date  
12/19/2018

Checked
JEH

Drawn	ZDL
-------	-----

Project Number	504-18-107
----------------	------------

Building Number  
28

Drawing Number  
G-000

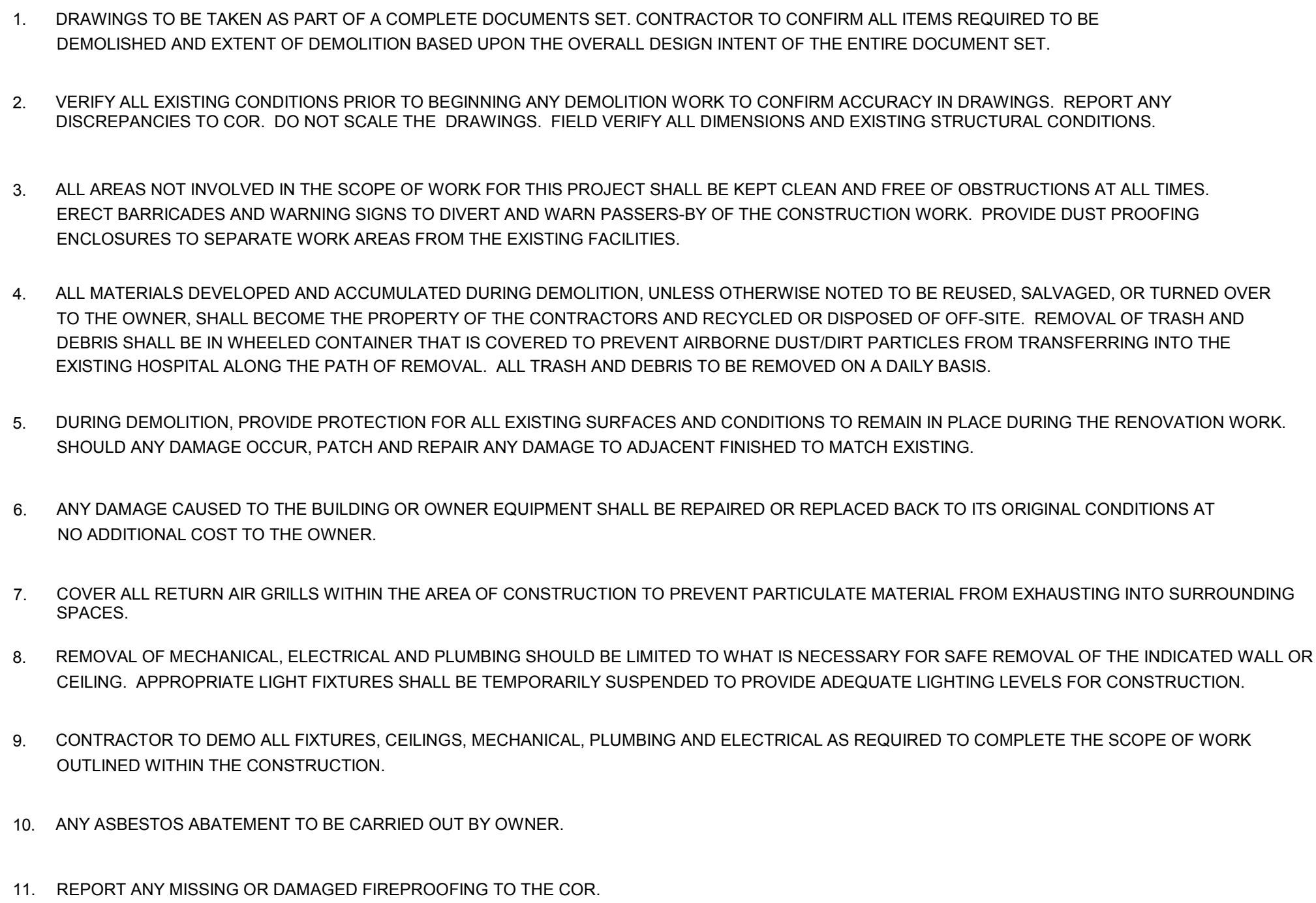
Page 01 OF 08

100% CONSTRUCTION DOCUMENTS

**Office of  
Construction  
and Facilities  
Management**





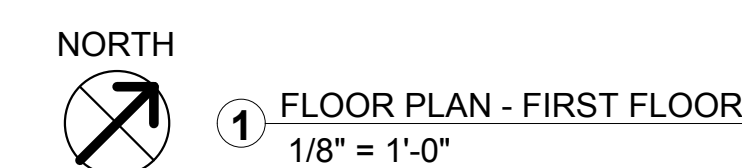
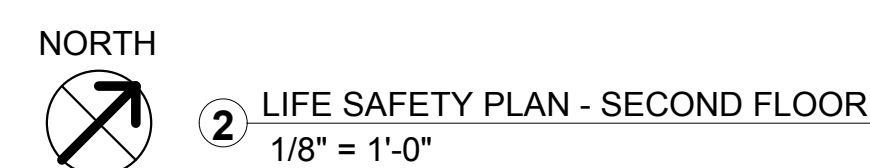
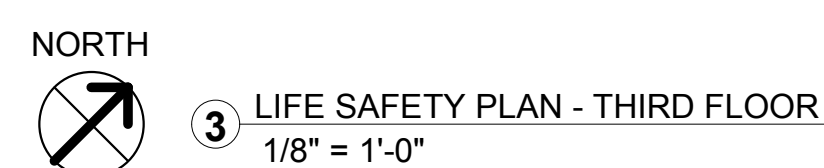
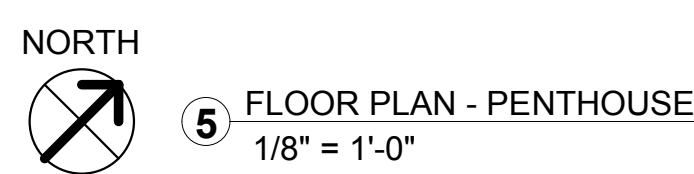


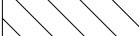


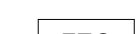
KEY PLAN

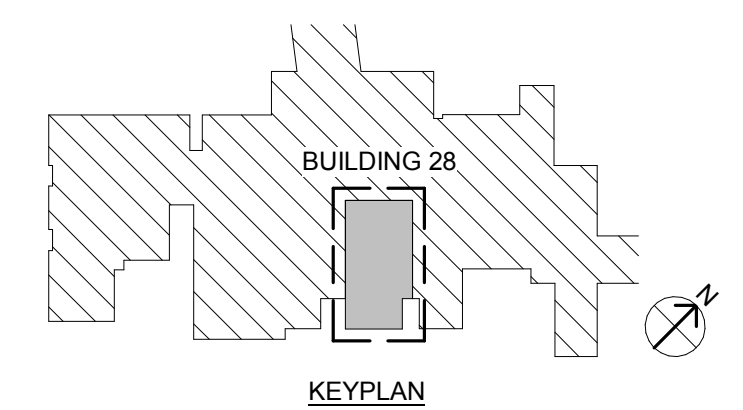
QUALITY ASSURANCE	SPEC	SPECIFICATION	UTIL	UTILITY
QUALITY CONTROL	SPKLR	SPRINKLER	VAR	VARIES
QUANTITY	SQ IN	SQUARE INCH	VCT	VINYL COMPOSITION TILE
QUALITY	SQ YD	SQUARE YARD	VFAT	VINYL FACED ACOSUITCAL TILE
	SS	SERVICE SINK	VR	VAPOR RETARDER
RADIUS OR RISER	ST	STAINLESS STEEL	VMC	VINYL WALL COVERING
RUBBER BASE	ST	STAIRS	VWF	VINYL WALL FABRIC
ROBE HOOK	STRUCT	STRUCTURAL		
RUBBER	TC	SOUND TRANSMISSION GLASS		
REFLECTED CEILING PLAN	STD	STANDARD	W/	WITH
REFLECTED CEILING PLAN	STD	STANDARD	WITHOUT	WITHOUT
RECESS	STD	STAINLESS	WBL	WOOD BLOCKING
RECEPTACLE	STOR	STORAGE	WC	WALL COVERING OR WATER CLOSET
RECTANGLE	SUSP CLG	SUSPENDED CEILING	WC WL HNG	WALL HUNG
REFERENCE OR REFRIGERATOR	SV	SHEET VINYL	WOOD	WOOD
REINFORCE			WDW	WINDOW
REQUIRED	T	TREAD	WFBF	WALL FABRIC
RESILIENT	T&G	TONGUE AND GROOVE	WSCOT	WAINS'COT
RETURN	TB	TOWEL BAR		
REVISION	TD	TOWEL DISPENSER		
ROOM	TEL	TELEPHONE	X BRACE	CROSS BRACE
ROUGH OPENING	THRES	THRESHOLD		
ROOF VENT	THRU	THROUGH	YD	YARD
	TMPD GL	TEMPERED GLASS		
	TO	TOP OF		
SCHEDULE	TO FDN	TOP OF FOUNDATION		
SOLID CORE WOOD DOOR	TOB	TOP OF BEAM		
SQUARE FOOT (FEET)	TOM	TOP OF MASONRY		
SHEET	TOS	TOP OF STEEL		
SHELVING	TOW	TOP OF WALL		
SIMILAR	TPD	TOILET PAPER DISPENSER		
SEALANT	TPH	TOILET PAPER HOLDER		
SHEET METAL	TR	TOWER RACK		
SMOKE	TYP	TYPICAL		
SANITARY NAPKIN DISPENSER				
SOUND INSULATION	UCD	UNDERCUT DOOR		
SANITARY NAPKIN DISPOSAL UNIT	UNO	UNLESS NOTED OTHERWISE		
	UR	URNAL		

## 100% CONSTRUCTION DOCUMENTS





	AREA NOT IN SCOPE
	BUILDING EXIT
	FIRE EXTINGUISHER CABINET (EXISTING)
	PATH OF EGRESS



**VA** U.S. Department  
of Veterans Affairs







A

B

C

D

E

F

G

three inches = one foot  
one and one-half inches = one foot  
one inch = one foot  
three-quarters inch = one foot  
one-half inch = one foot  
three-eighths inch = one foot  
one-quarter inch = one foot  
one-eighth inch = one foot

A

B

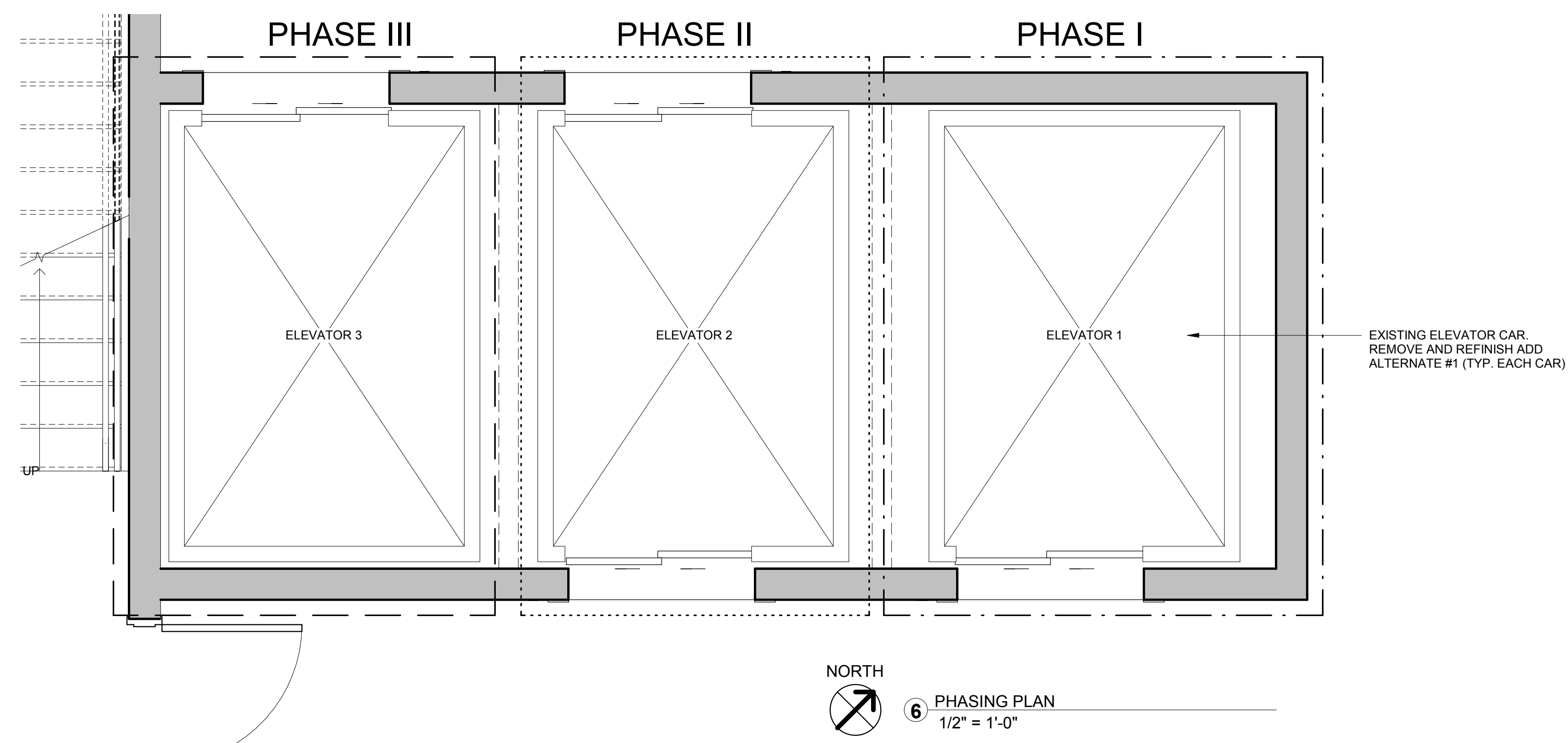
C

D

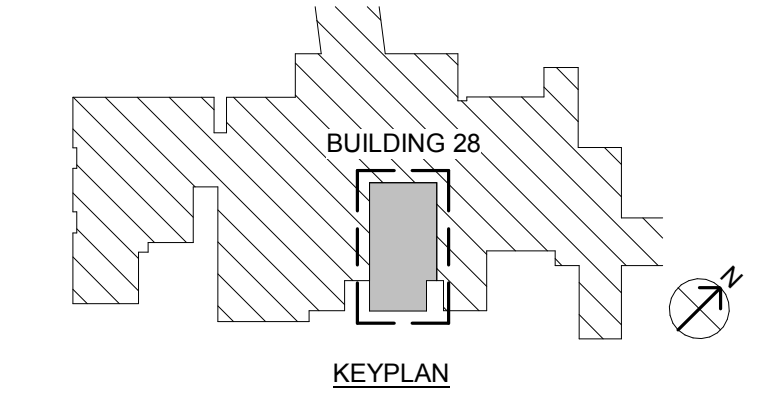
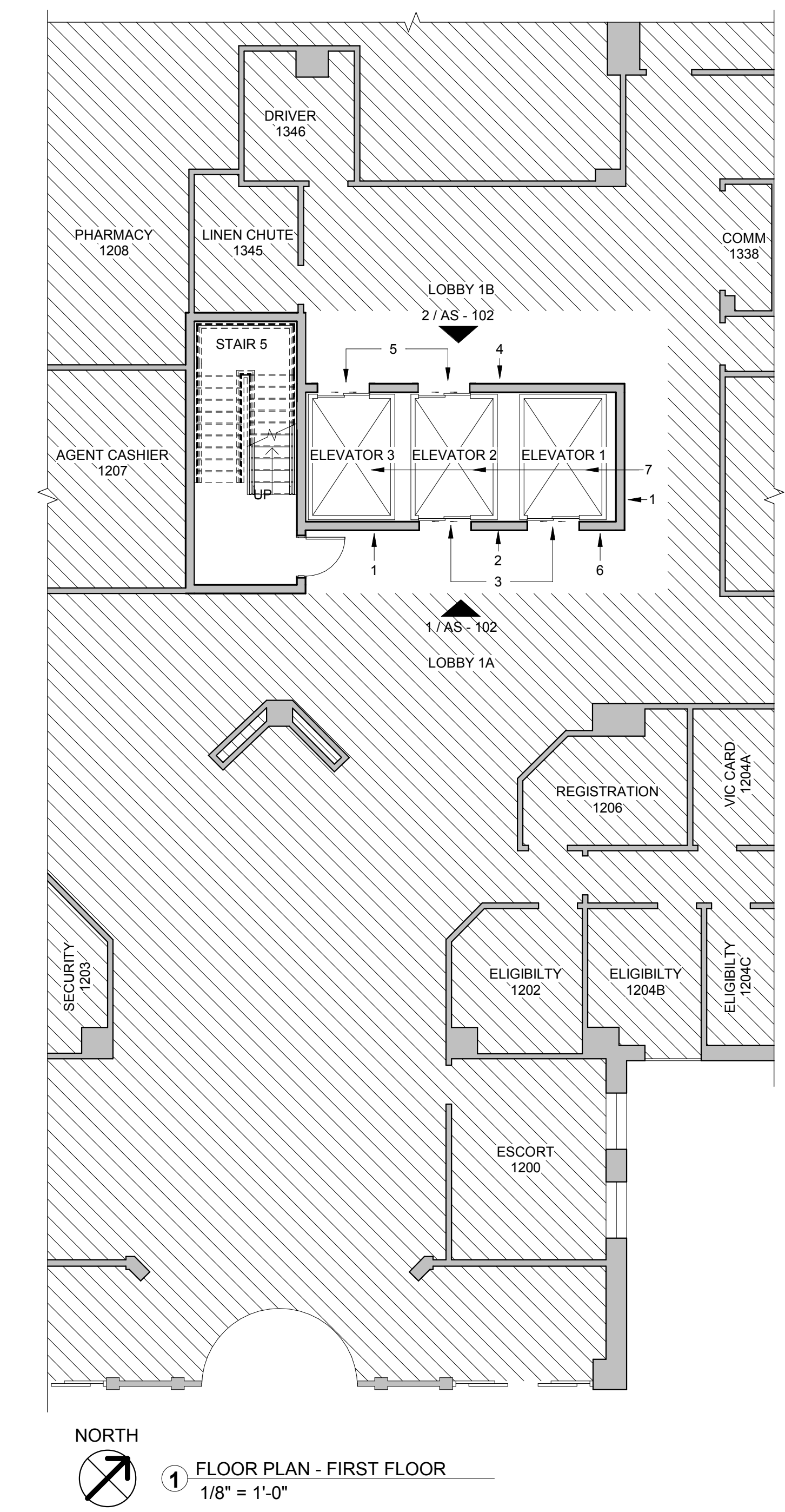
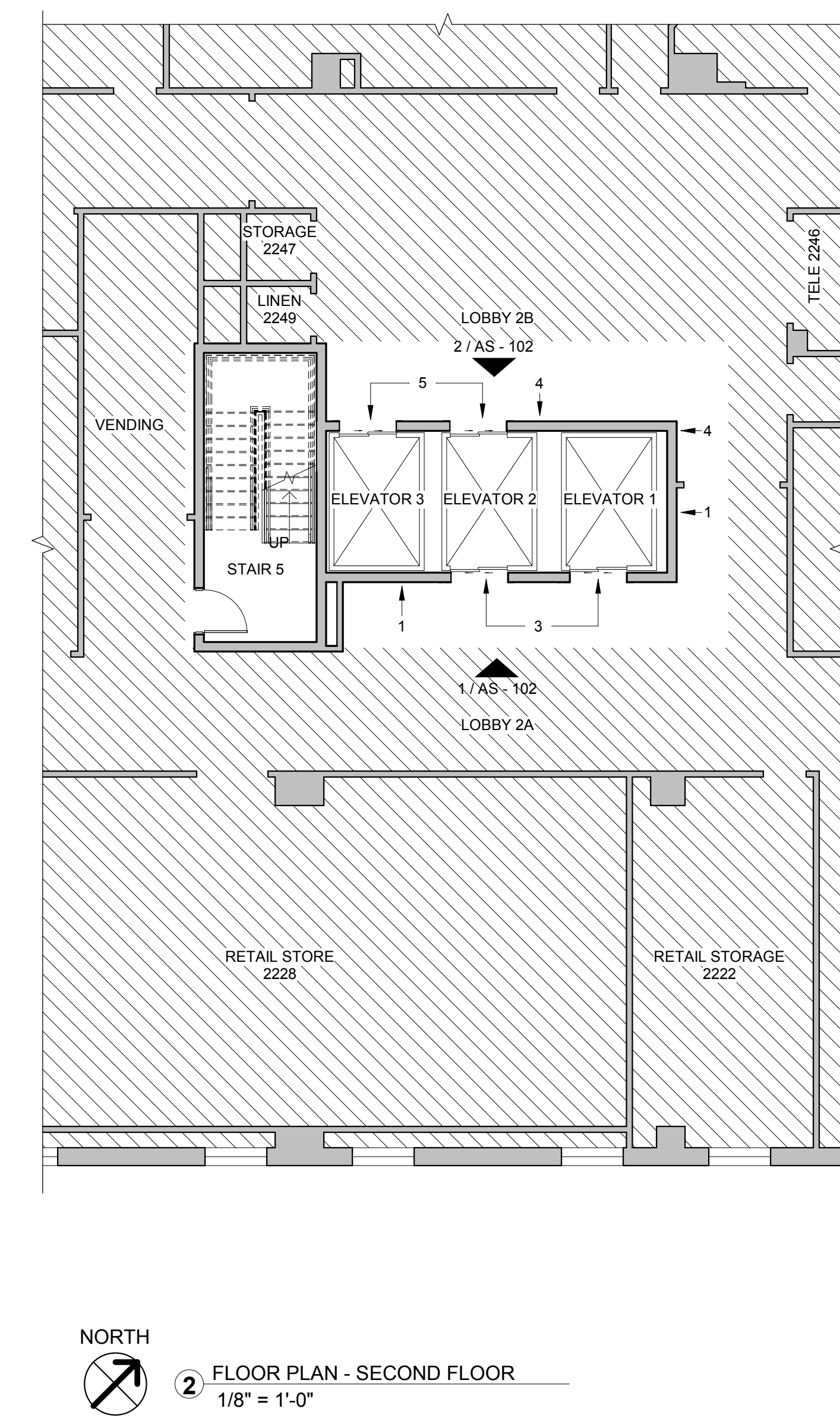
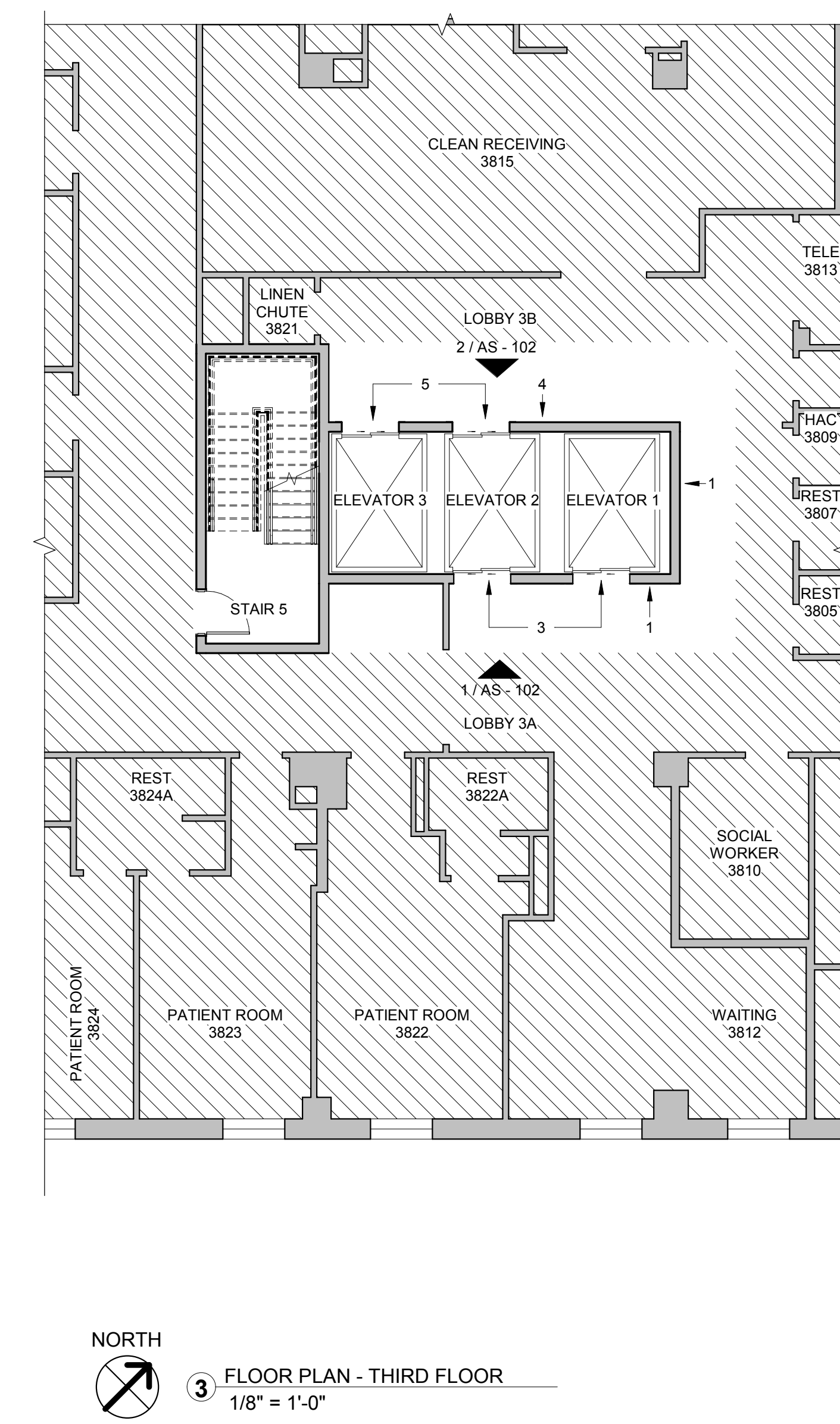
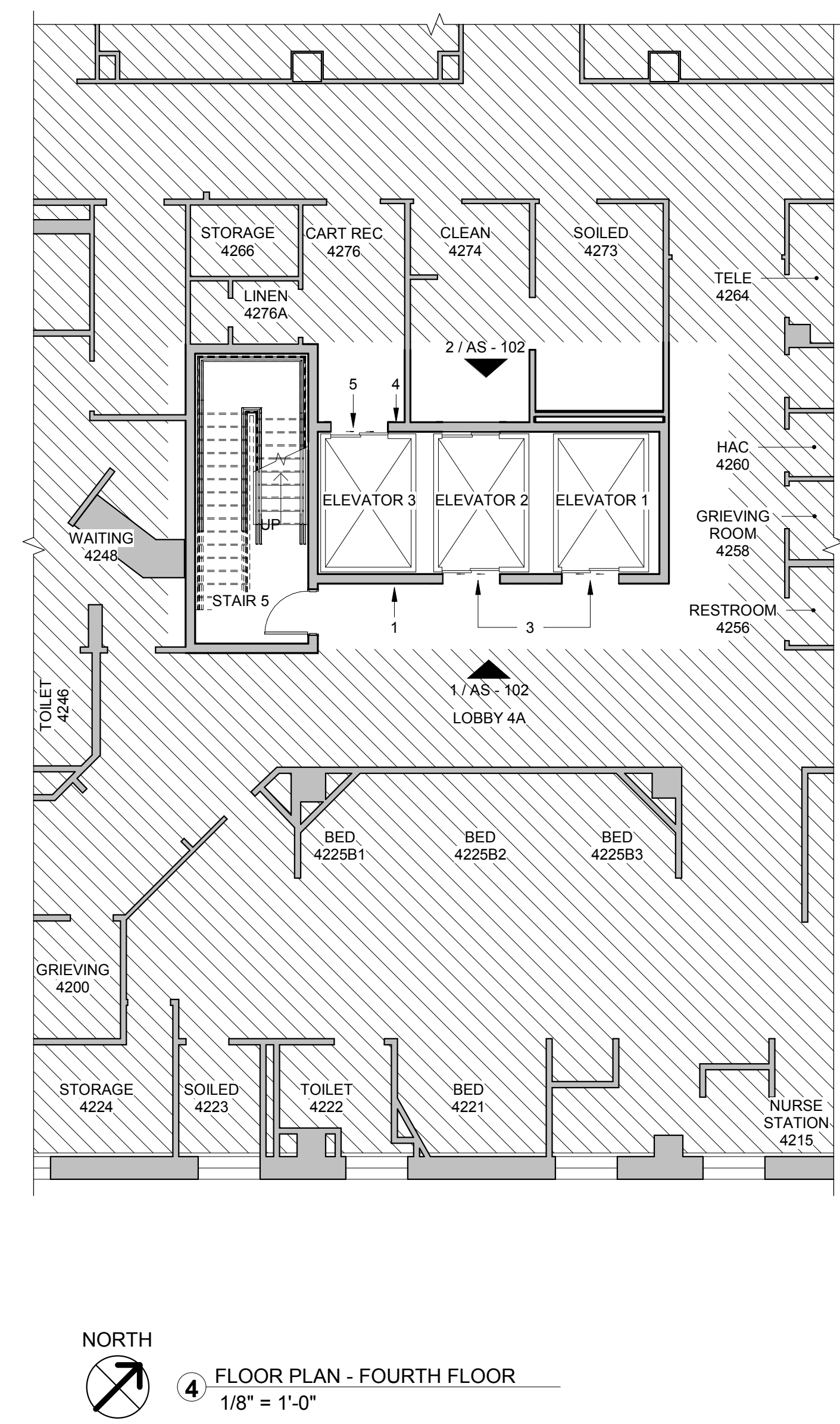
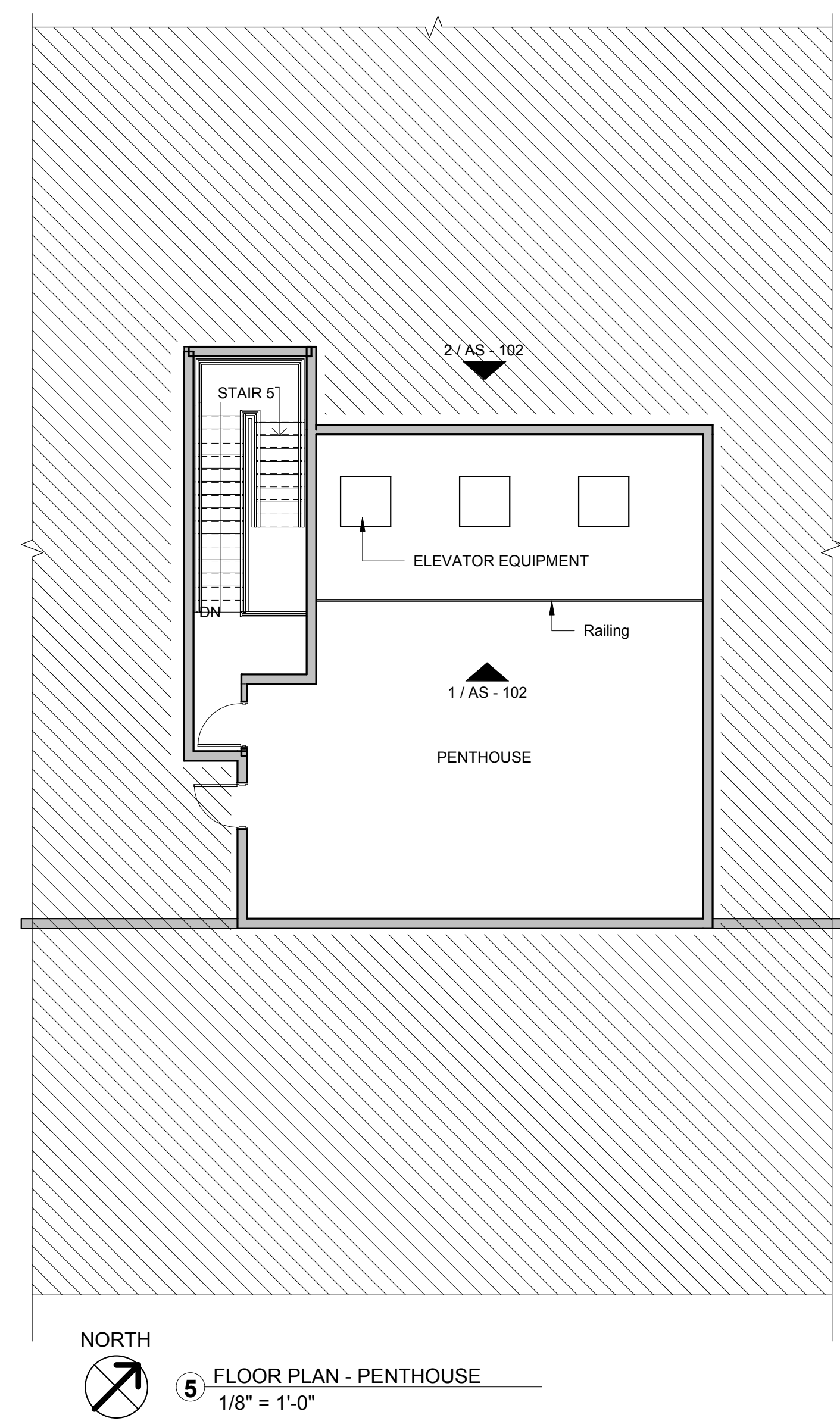
E

F

G



- GENERAL NOTES**
1. PHASE 1 TO INCLUDE ALL MODIFICATIONS WITHIN AND CONCERNING ELEVATOR #1 REFER GENERAL, MECHANICAL AND ELECTRICAL SPECIFICATIONS.
  2. PHASE 2 TO INCLUDE ALL MODIFICATIONS WITHIN AND CONCERNING ELEVATOR #2 REFER GENERAL, MECHANICAL AND ELECTRICAL SPECIFICATIONS.
  3. PHASE 3 TO INCLUDE ALL MODIFICATIONS WITHIN AND CONCERNING ELEVATOR #3 REFER GENERAL, MECHANICAL AND ELECTRICAL SPECIFICATIONS.
  4. REFER TO FINISH SCHEDULE ON SHEET AS-102 FOR WALL AND ELEVATOR FINISHES.
  5. LEAVE CLEAR ACCESS TO ITEMS IN ADJACENT PHASES DURING CONSTRUCTION.
  6. LEAVE CLEAR EXIT WAY ACCESS DURING CONSTRUCTION.
- FLOOR PLAN - SCOPE OF WORK LEGEND**
- AREA OF NO WORK
  - PHASE 1
  - PHASE 2
  - PHASE 3
- DEMOLITION KEYED NOTES**
- ① NEW GYPSUM WALL BOARD. (ADD ALTERNATE #4)
  - ② NEW GYPSUM WALL BOARD.
  - ③ REPLACE ELEVATOR DOOR, FRAME, AND SILL. (ADD ALTERNATE #2)
  - ④ NEW GYPSUM WALL BOARD. (ADD ALTERNATE #5)
  - ⑤ REPLACE ELEVATOR DOOR, FRAME, AND SILL. (ADD ALTERNATE #3)
  - ⑥ RE-USE EXISTING TILE WALL BASE.
  - ⑦ PREPARE TO RECEIVE NEW FINISH. (ADD ALTERNATE #1)



<b>CONSULTANTS</b> M.E.P. / T. ENGINEER BROWN CONSULTING 3505 OLSEN BLVD, SUITE 110 AMARILLO, TX 79109 WWW.BROWNCONSULTINGENGINEERS.COM		<b>ARCHITECT</b> <b>SPUR DESIGN</b> 312 SW 20th Street Oklahoma City, OK 73109 spur-design.com 11020 Ring Street, Suite 190 Overland Park, KS 66202 spur-design.com		APPROVED: DIRECTOR APPROVED: ASSOCIATE DIRECTOR APPROVED: ASSISTANT DIRECTOR APPROVED: CHIEF ENGINEER	Drawing Title <b>FLOOR PLANS</b> APPROVED: CHIEF ENGINEER	Project Title <b>REPLACE ELEVATOR CONTROLS BLDG 28</b> Location AMARILLO VA HEALTH CARE SYSTEM 6010 W. AMARILLO BLVD, AMARILLO, TX 79106 Date 12/19/2018 Checked JEH Drawn ZDL	Project Number 504-18-107 Building Number 28 Drawing Number <b>AS - 101</b> Dwg 05 OF 08	<b>Office of Construction and Facilities Management</b> VA U.S. Department of Veterans Affairs
--	--	--	--	--	---	--	--	---



A

B

C

D

E

F

A

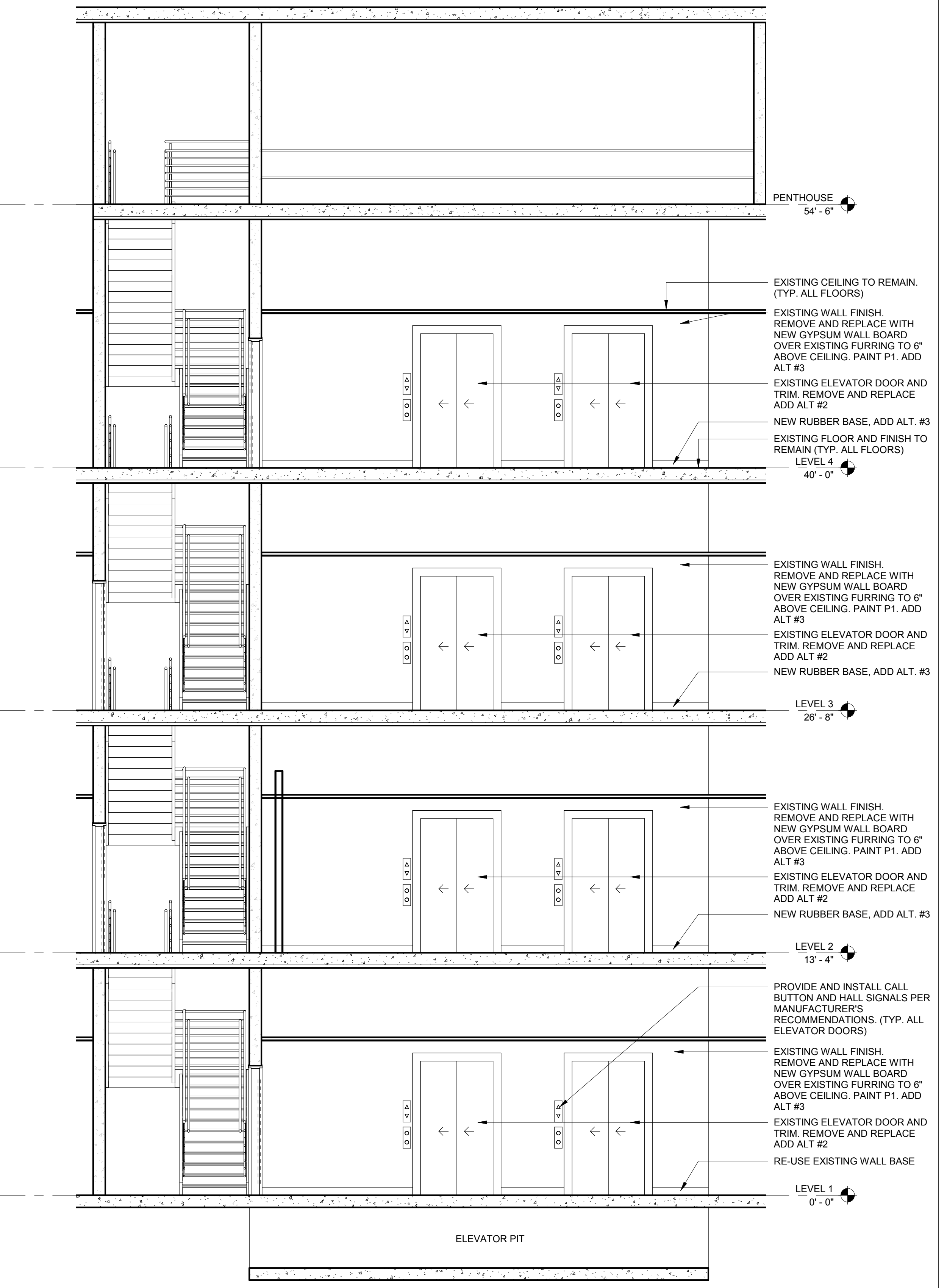
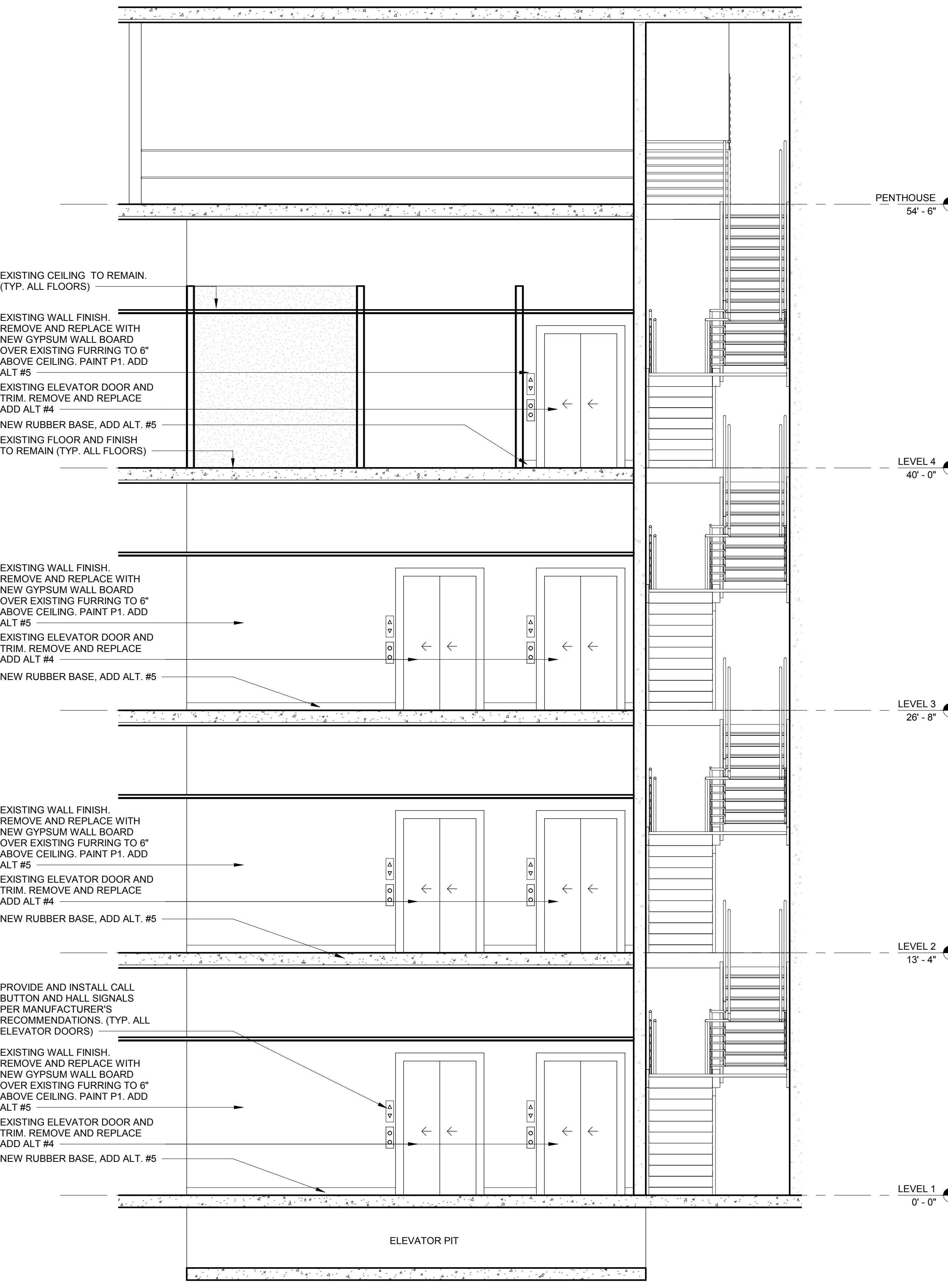
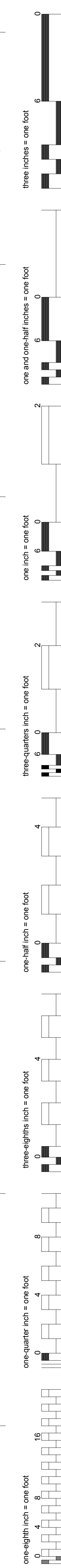
B

C

D

E

F



FINISH SCHEDULE								
ROOM NAME/NUMBER	FLOOR FINISHES	FLOOR FINISHES	WALL FINISHES	WALL FINISHES	WALL FINISHES	WALL FINISHES	CEILING FINISHES	REMARKS
	MATERIAL	BASE	NORTH	EAST	SOUTH	WEST	MATERIAL	
ELEVATOR 1	LVT	STAINLESS STEEL	STAINLESS STEEL	STAINLESS STEEL	STAINLESS STEEL	STAINLESS STEEL	STAINLESS STEEL	ADD ALTERNATE #1
ELEVATOR 2	LVT	STAINLESS STEEL	STAINLESS STEEL	STAINLESS STEEL	STAINLESS STEEL	STAINLESS STEEL	STAINLESS STEEL	ADD ALTERNATE #1
ELEVATOR 3	LVT	STAINLESS STEEL	STAINLESS STEEL	STAINLESS STEEL	STAINLESS STEEL	STAINLESS STEEL	STAINLESS STEEL	ADD ALTERNATE #1
LOBBY 1A		TILE (REUSE/MATCH EXISTING)				GYPSUM WALL BOARD PAINTED P1		ADD ALTERNATE #3
LOBBY 2A		RUBBER BASE 1				GYPSUM WALL BOARD PAINTED P1		ADD ALTERNATE #3
LOBBY 3A		RUBBER BASE 1				GYPSUM WALL BOARD PAINTED P1		ADD ALTERNATE #3
LOBBY 4A		RUBBER BASE 1				GYPSUM WALL BOARD PAINTED P1		ADD ALTERNATE #3
LOBBY 1B		RUBBER BASE 1		GYPSUM WALL BOARD PAINTED P1				ADD ALTERNATE #5
LOBBY 2B		RUBBER BASE 1		GYPSUM WALL BOARD PAINTED P1				ADD ALTERNATE #5
LOBBY 3B		RUBBER BASE 1		GYPSUM WALL BOARD PAINTED P1				ADD ALTERNATE #5
CART REC 4276		RUBBER BASE 1		GYPSUM WALL BOARD PAINTED P1				ADD ALTERNATE #5

2 ELEVATION - EAST  
1/4" = 1'-0"

1 ELEVATION - WEST  
1/4" = 1'-0"

REVISIONS

DATE

CONSULTANTS

M.E.P. / T. ENGINEER  
BROWN CONSULTING  
3505 OLSEN BLVD, SUITE 110  
AMARILLO, TX 79109  
WWW.BROWNCONSULTINGENGINEERS.COM

ARCHITECT

APPROVED: DIRECTOR

APPROVED: ASSOCIATE DIRECTOR

APPROVED: ASSISTANT DIRECTOR

APPROVED: CHIEF ENGINEER

Project Title

INTERIOR ELEVATIONS

APPROVED: CHIEF ENGINEER

Project Title

REPLACE ELEVATOR CONTROLS BLDG 28

Location  
AMARILLO VA HEALTH CARE SYSTEM  
6010 W. AMARILLO BLVD, AMARILLO, TX 79106

Date  
12/19/2018

Checked  
JEH

Drawn  
AA

Project Number  
504-18-107

Building Number  
28

Drawing Number  
AS - 102

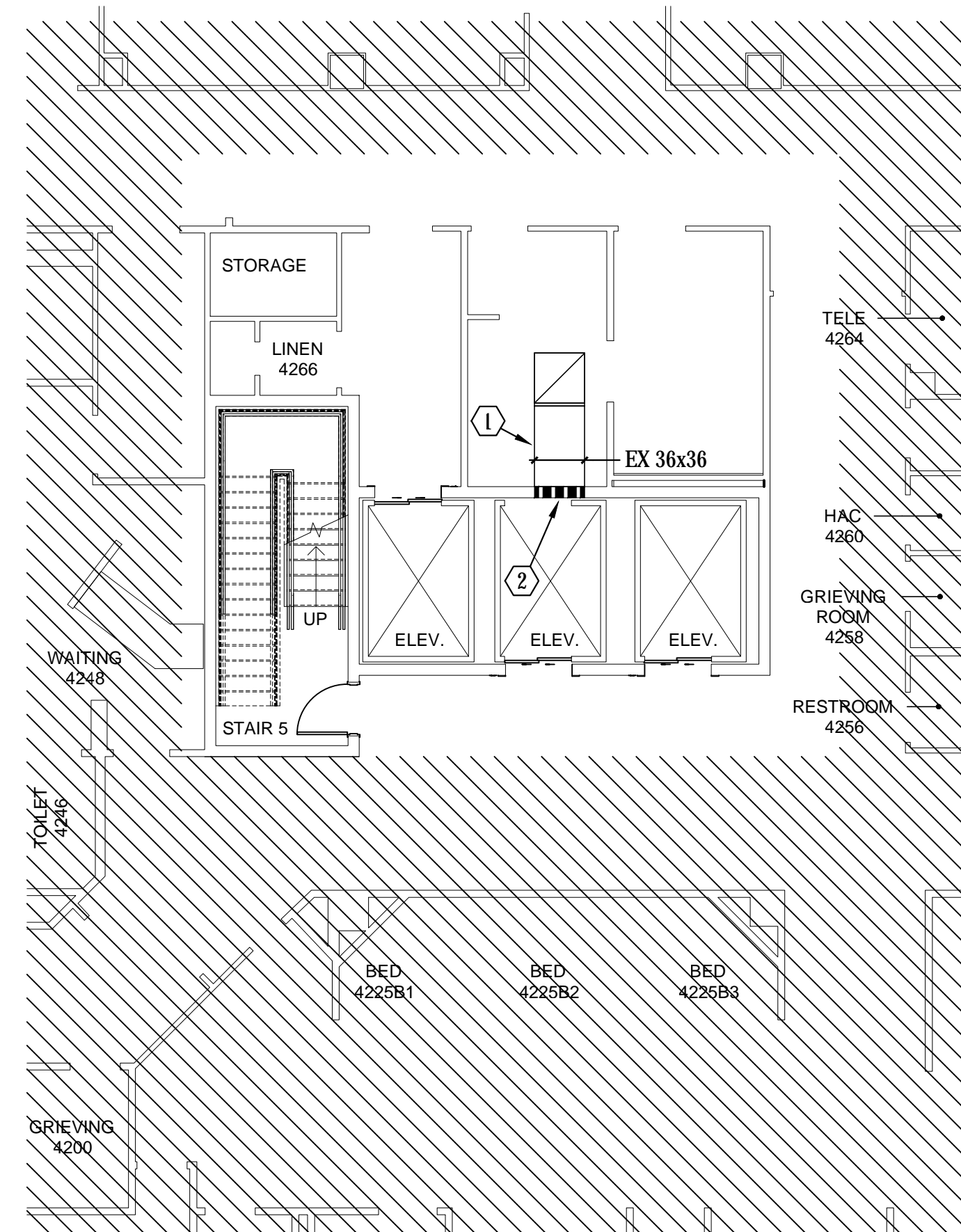
Dwg 06 OF 08

Office of Construction and Facilities Management

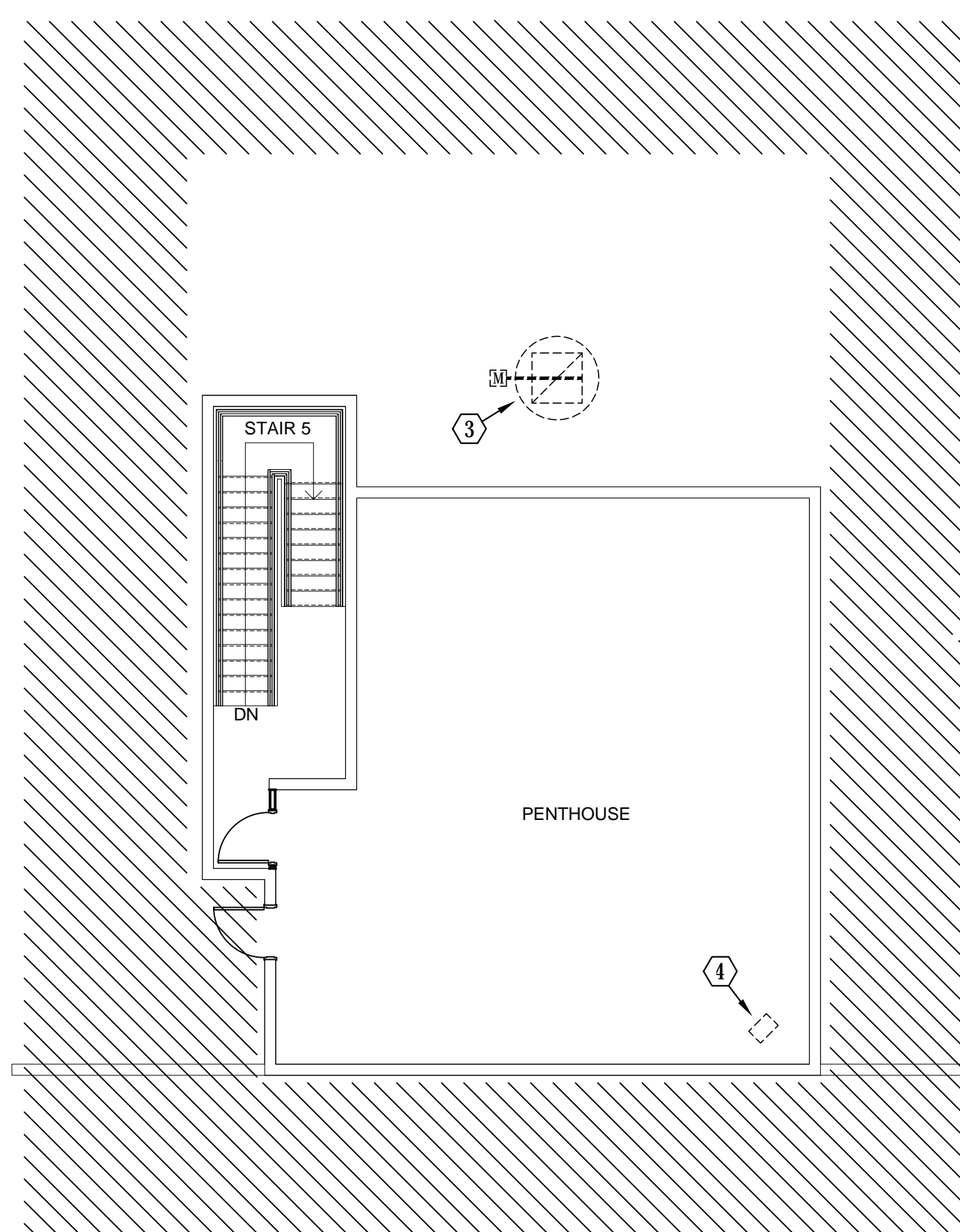
VA U.S. Department of Veterans Affairs

100% CONSTRUCTION DOCUMENTS

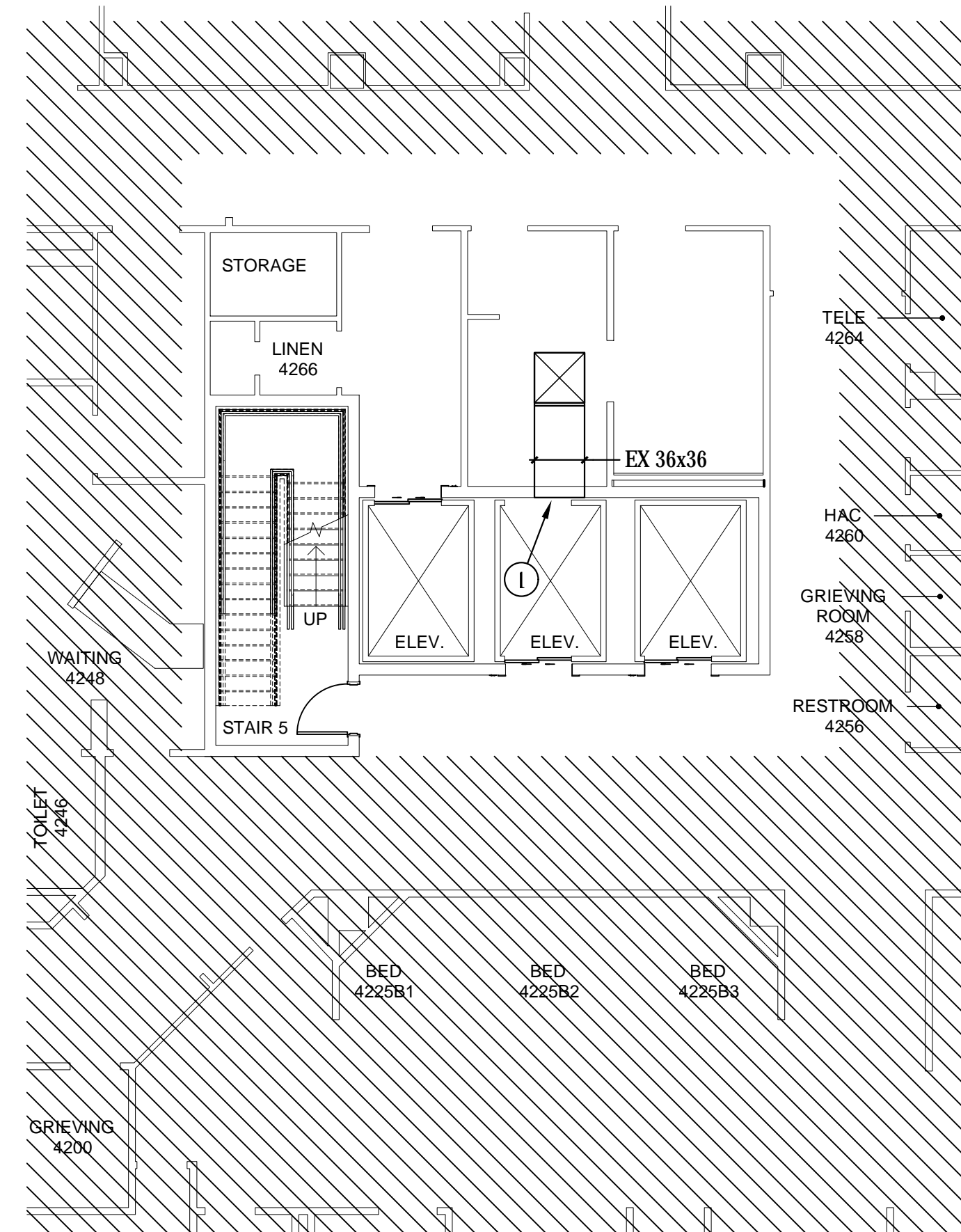




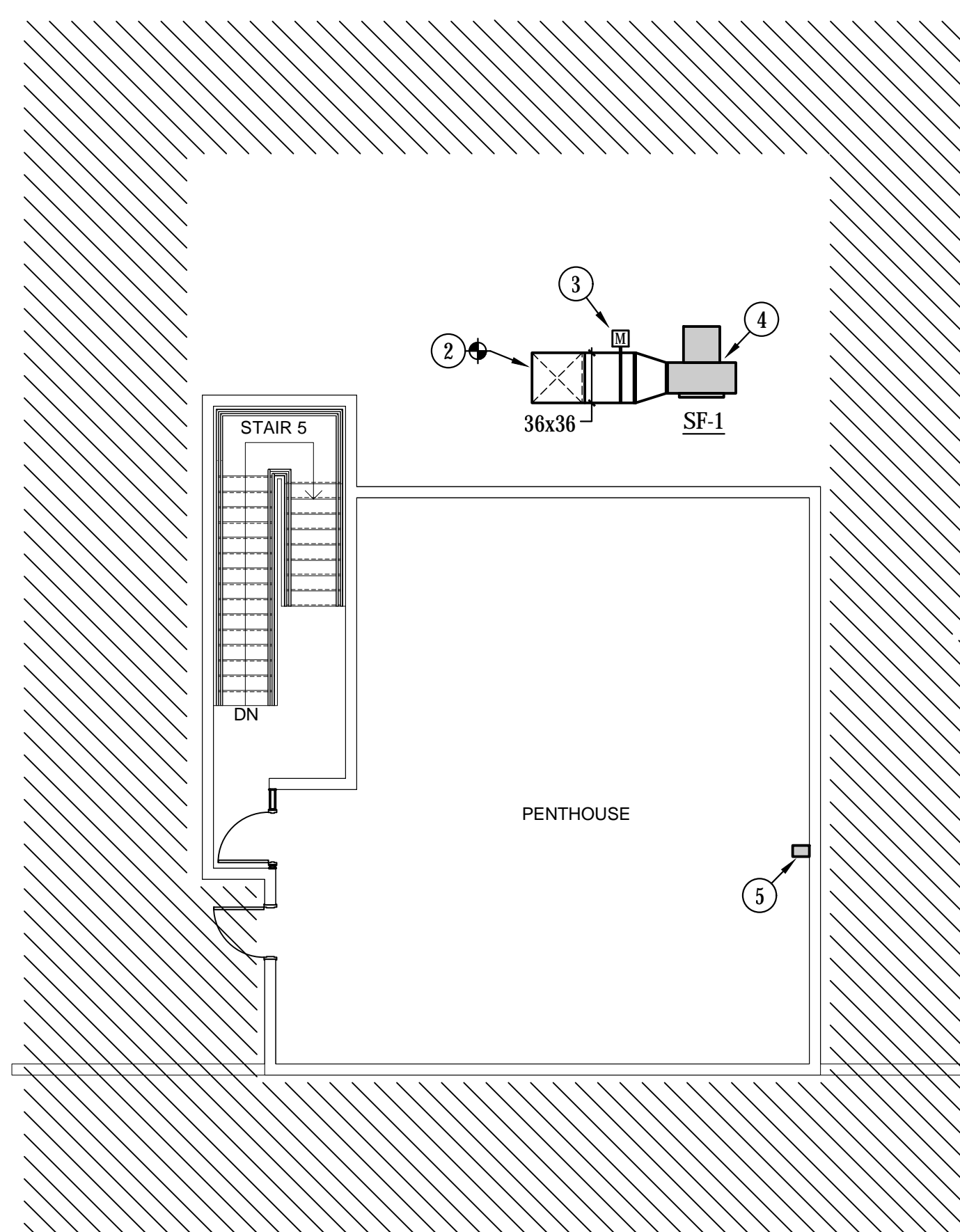
1 DEMOLITION FLOOR PLAN - FOURTH FLOOR  
1/8" = 1'-0"



2 DEMOLITION FLOOR PLAN - PENTHOUSE  
1/8" = 1'-0"



3 FLOOR PLAN - FOURTH FLOOR  
1/8" = 1'-0"



4 FLOOR PLAN - PENTHOUSE  
1/8" = 1'-0"

#### GENERAL NOTES:

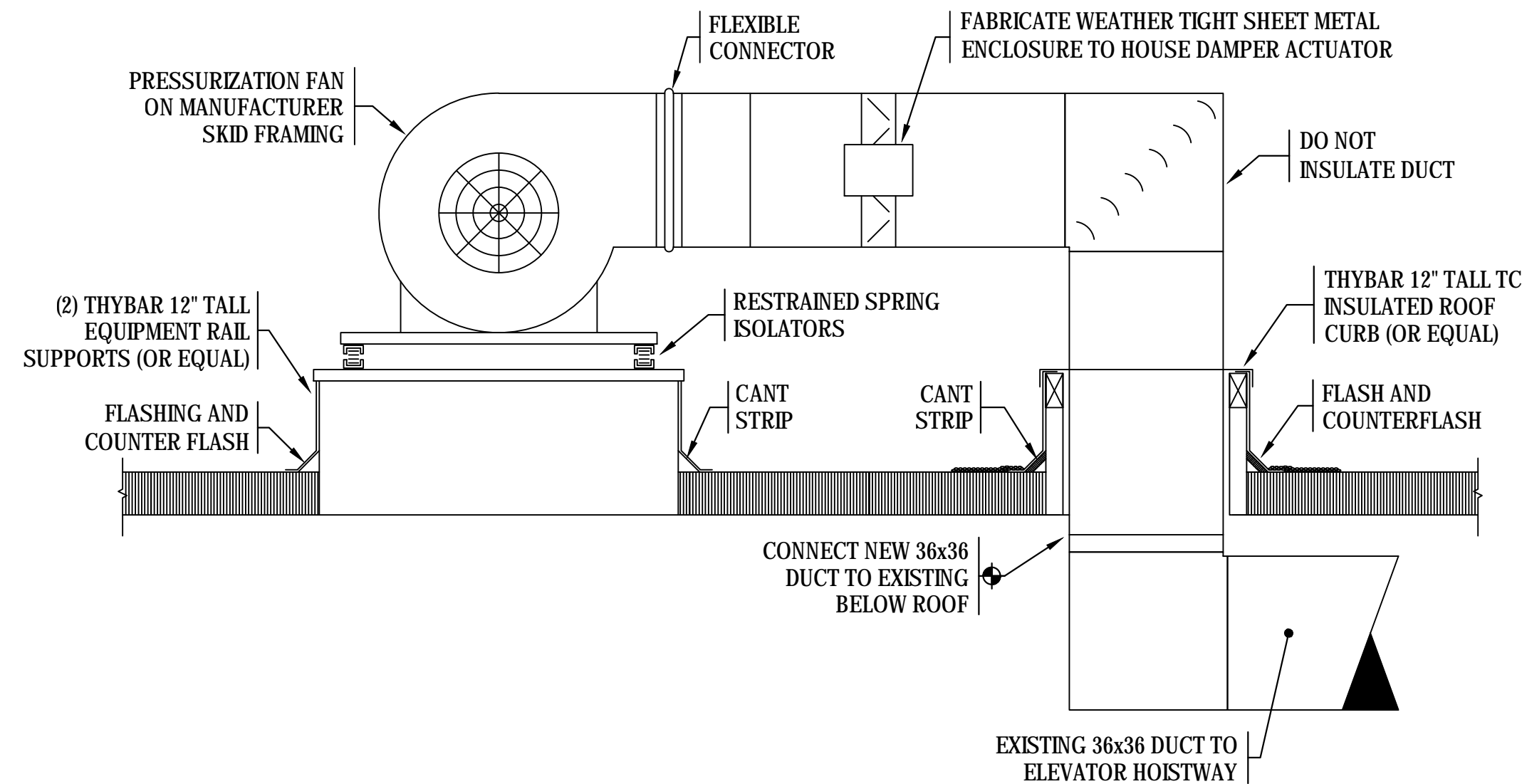
- COORDINATE ALL WORK WITH EXISTING GENERAL CONDITIONS, ARCHITECTURAL, STRUCTURAL, PLUMBING, FIRE PROTECTION, AND ELECTRICAL SYSTEMS.
- TEMPERATURE CONTROLS CONTRACTOR SHALL EXTEND THE EXISTING BUILDING EMCS AS REQUIRED TO SERVE NEW ELEVATOR HOISTWAY PRESSURIZATION SYSTEM.

#### DEMOLITION KEYED NOTES:

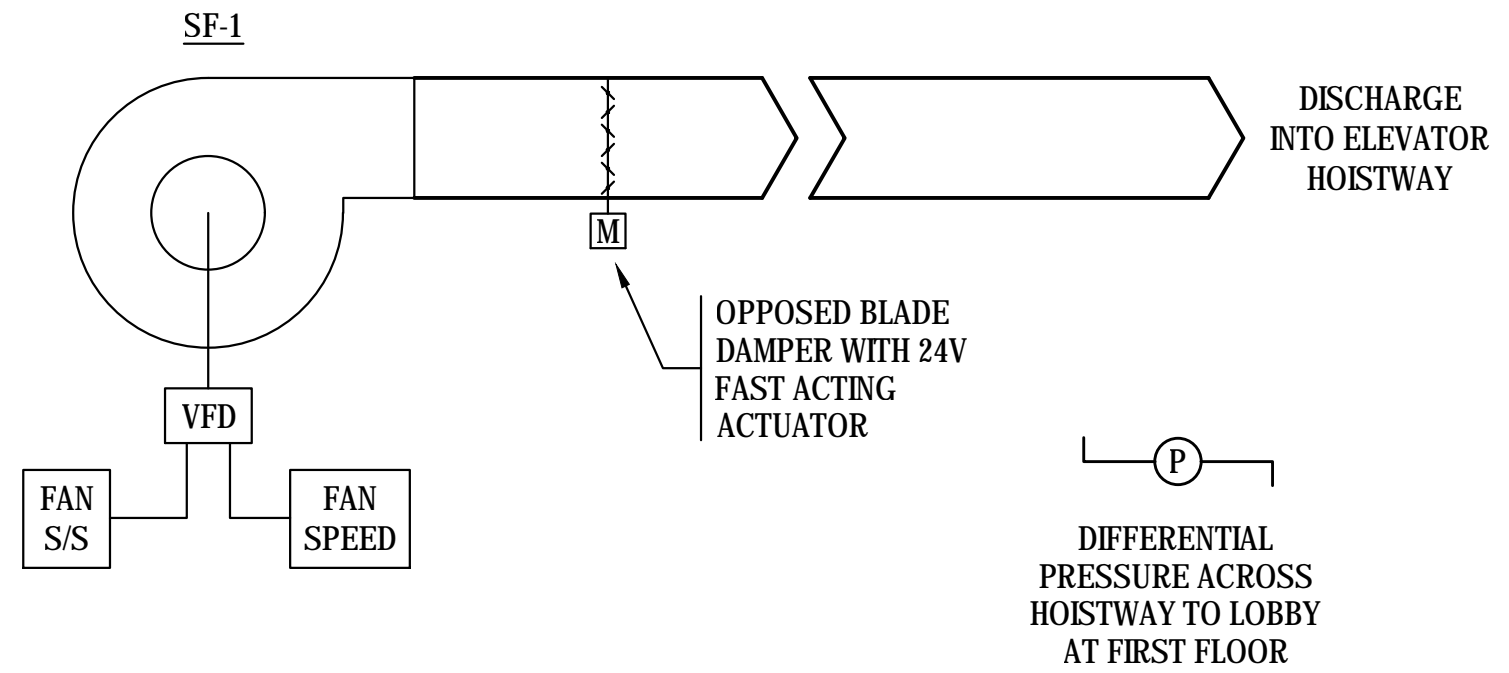
- EXISTING VENTILATION DUCT TO REMAIN.
- REMOVE EXISTING FIRE DAMPER SHOWN DASHED.
- REMOVE EXISTING VENTILATION HOOD AND ASSOCIATED MOTORIZED DAMPER SHOWN DASHED. REMOVE ASSOCIATED ROOF CURB. ASSOCIATED 36x36 DUCT TURNED UP TO REMAIN. CONTRACTOR TO DELIVER VENTILATION HOOD TO OWNER. COORDINATE DETAILS WITH VA PROJECT ENGINEER.
- REMOVE EXISTING ELECTRIC UNIT HEATER SHOWN DASHED.

#### KEYED NOTES:

- REPAIR DUCT THRU WALL AS REQUIRED FOR AIR TIGHT SEAL DUE TO REMOVAL OF FIRE DAMPER. REINSTALL EXISTING GRATE COVERING OPENING INTO ELEVATOR HOISTWAY. SEAL ALL EXISTING DUCT TO MEET CURRENT SMACNA STANDARDS.
- ROUTE NEW 36x36 ELEVATOR HOISTWAY PRESSURIZATION DUCT DOWN THRU ROOF AND CONNECT TO EXISTING AS SHOWN. REFER TO DETAIL 1 THIS SHEET.
- INSTALL MOTORIZED ISOLATION DAMPER IN ELEVATOR HOISTWAY PRESSURIZATION DUCT. FABRICATE WEATHER-TIGHT SHEET METAL ENCLOSURE TO HOUSE DAMPER ACTUATOR. DAMPER ACTUATOR SHALL BE NORMALLY CLOSED FAST ACTING TYPE. REFER TO SEQUENCE OF OPERATION THIS SHEET.
- MOUNT SUPPLY FAN ON EQUIPMENT SUPPORT RAILS AND RESTRAINED SPRING ISOLATORS. REFER TO DETAIL 1 THIS SHEET.
- MOUNT VARIABLE FREQUENCY DRIVE SERVING SF-1 ON WALL.



PRESSURIZATION FAN INSTALLATION DETAIL  
NO SCALE



#### ELEVATOR HOISTWAY PRESSURIZATION SEQUENCE OF OPERATION

- SYSTEM CONSISTS OF:
- ROOF MOUNTED SUPPLY FAN WITH VARIABLE FREQUENCY DRIVE (VFD)
  - DUCT MOUNTED MOTORIZED CONTROL DAMPER

TEMPERATURE CONTROLS CONTRACTOR TO PROVIDE:

- EMCS CONTROLLER
- 24V DAMPER ACTUATOR
- DIFFERENTIAL PRESSURE SENSOR
- CURRENT TRANSDUCER

OPERATION:

- THE CONTROL DAMPER SHALL BE NORMALLY POWERED CLOSED.
- UPON SIGNAL FROM THE FIRE ALARM PANEL, THE CONTROL DAMPER SHALL SPRING RETURN OPEN AND A SIGNAL SHALL BE SENT TO THE VFD TO ENERGIZE THE FAN.
- THE VFD SHALL RAMP UP THE FAN SPEED TO MAINTAIN A POSITIVE PRESSURE IN THE ELEVATOR HOISTWAY OF 0.10" W.G. IN RELATION TO THE FIRST FLOOR LOBBY.
- ON LOSS OF SIGNAL FROM THE FIRE ALARM PANEL, THE FAN SHALL DE-ENERGIZE AND THE CONTROL DAMPER SHALL BE POWERED CLOSED.

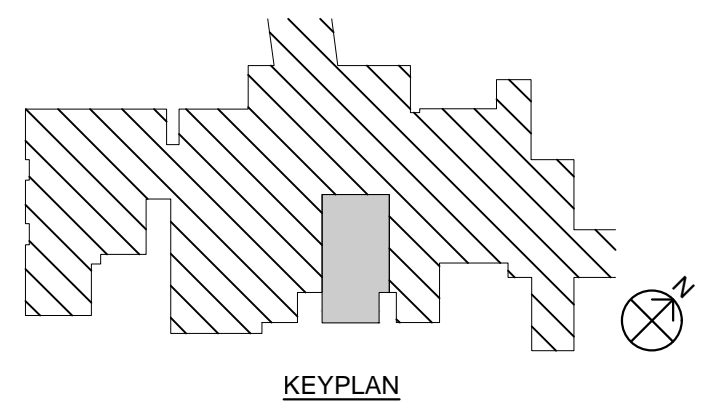
MONITORING AND ALARMS:

- FAN STATUS
- AN ALARM SHALL BE GENERATED TO THE EMCS WHEN THE FAN IS RUNNING.

WORK BY OTHERS:

- DIVISION 26 TO PROVIDE POWER WIRING TO VFD AND TO FAN.

FAN SCHEDULE									
MARK	CFM	SP	HP	RPM	TYPE	ROTATION	DRIVE	ELECTRICAL	EXAMPLE: COOK
SF-1	12,000	0.75	5	1074	UTILITY VENT SET	CLOCKWISE	BELT	460/3/60	270 CPS
NOTES:									
1. FAN SELECTED AT ELEVATION OF 3600 FEET.									
2. PROVIDE FAN WITH FACTORY WIRED DISCONNECT, PREMIUM EFFICIENCY MOTOR, AND SHAFT SEAL.									
3. PROVIDE FAN WITH OSHA WEATHER COVER, STEEL ACCESS DOOR, SPIRAL INLET GUARD, AND STEEL DRAIN.									
4. PROVIDE FAN WITH HEAT SHIELD, EXTENDED LUBE LINES, AND ROTARY BELT TENSIONER.									
5. PROVIDE FAN WITH SPRING ISOLATORS (6).									
6. FAN SHALL BE UL LISTED FOR SMOKE CONTROL APPLICATION.									



100% CONSTRUCTION DOCUMENTS

#### CONSULTANTS



M.E.P. / T. ENGINEER  
BROWN CONSULTING  
3505 OLSEN BLVD, SUITE 110  
AMARILLO, TX 79109  
WWW.BROWNCONSULTINGENGINEERS.COM



December 19, 2018

#### ARCHITECT



APPROVED: DIRECTOR

APPROVED: ASSOCIATE DIRECTOR

APPROVED: ASSISTANT DIRECTOR

APPROVED: CHIEF ENGINEER

Drawing Title

MECHANICAL FLOOR PLANS

APPROVED: CHIEF ENGINEER

Project Title

REPLACE ELEVATOR  
CONTROLS BLDG 28

Location  
AMARILLO VA HEALTH CARE SYSTEM  
6010 W. AMARILLO BLVD, AMARILLO, TX 79106

Date  
12/19/2018

Checked  
SAM

Drawn  
KEH

Project Number

504-18-107

Building Number

28

Drawing Number

MH - 101

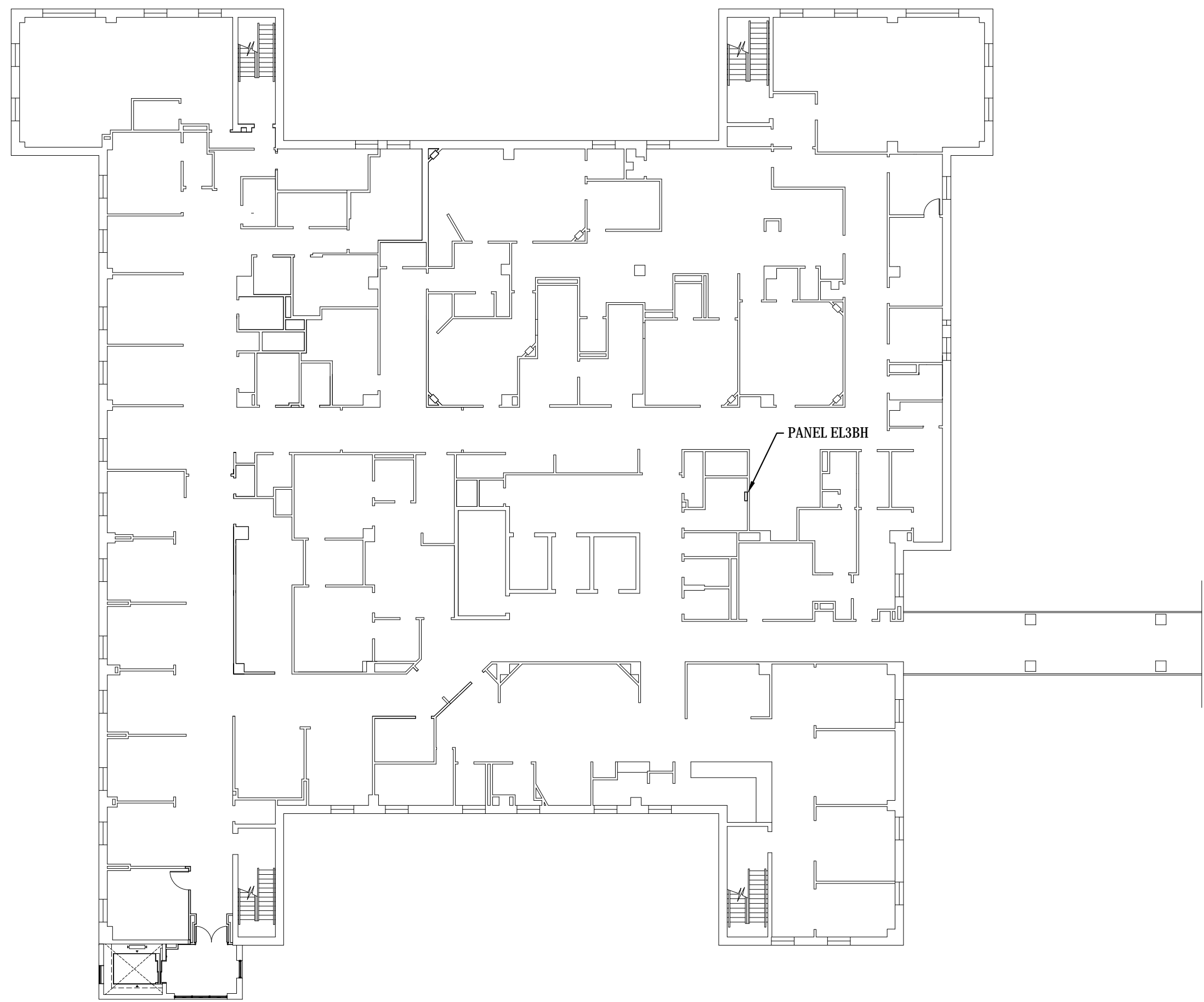
Dwg 7 OF 8

Office of  
Construction  
and Facilities  
Management

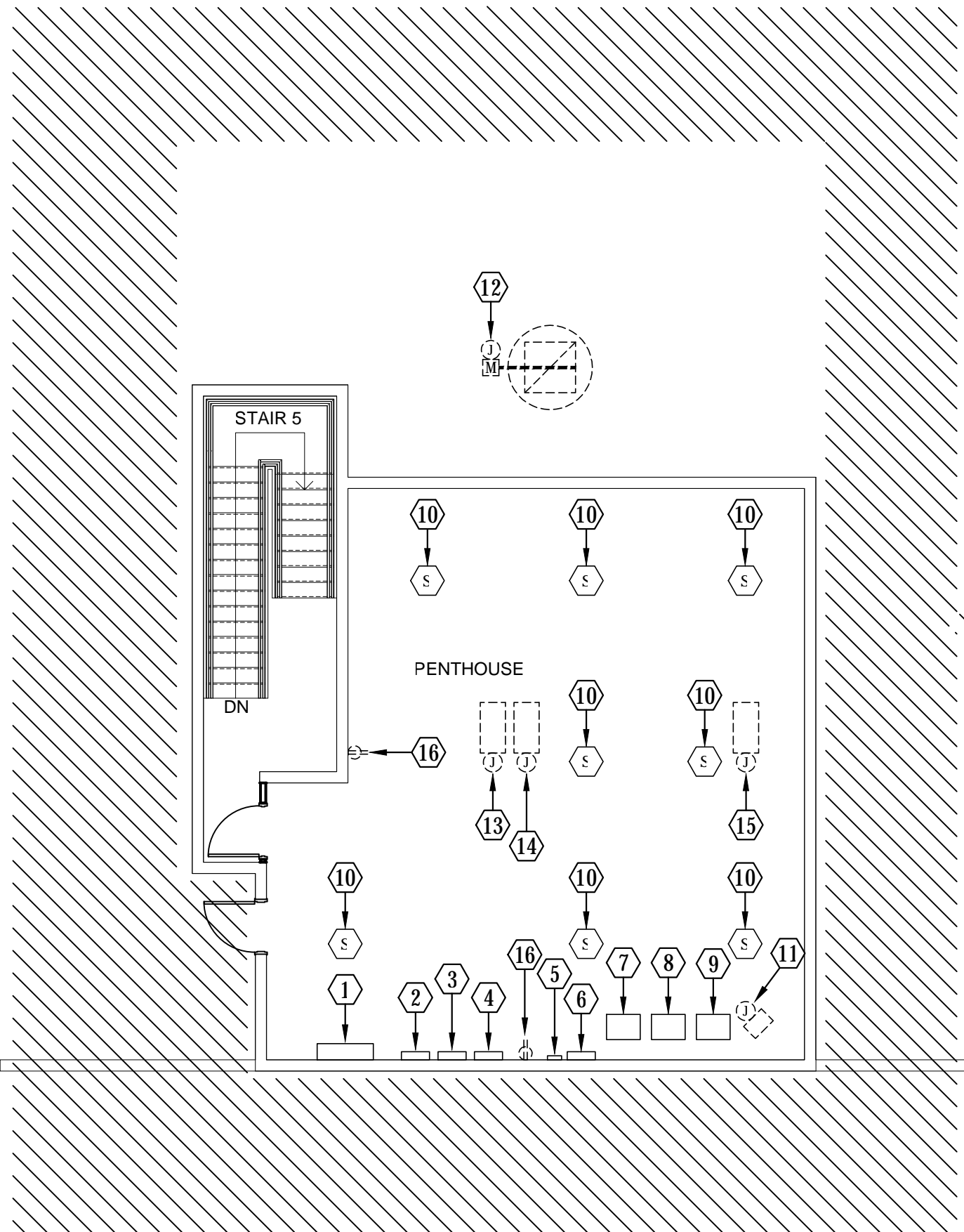




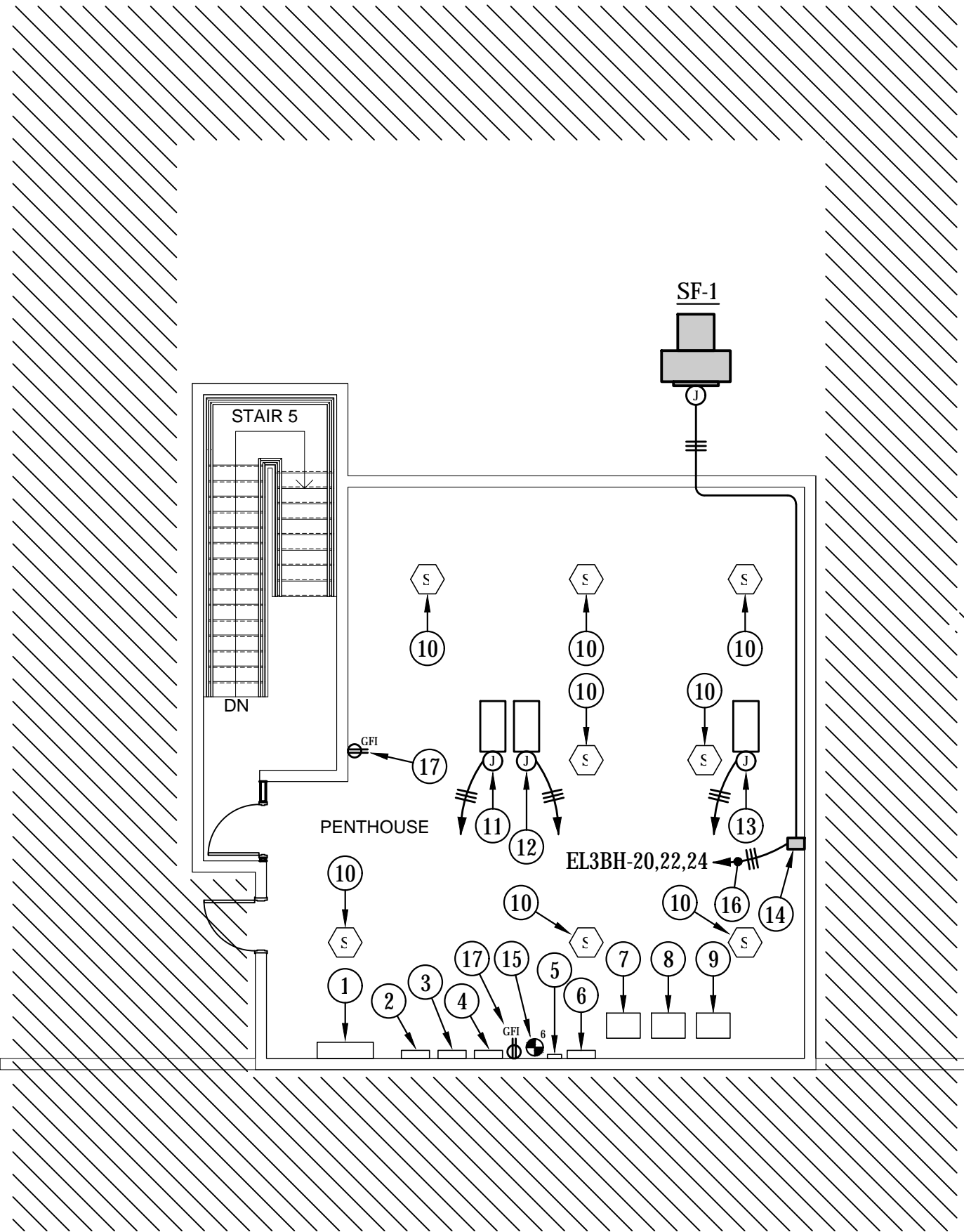
0  
6  
12  
18  
24  
30  
36  
42  
48  
54  
60  
66  
72  
78  
84  
90  
96  
102  
108  
114  
120  
126  
132  
138  
144  
150  
156  
162  
168  
174  
180  
186  
192  
198  
204  
210  
216  
222  
228  
234  
240  
246  
252  
258  
264  
270  
276  
282  
288  
294  
300  
306  
312  
318  
324  
330  
336  
342  
348  
354  
360  
366  
372  
378  
384  
390  
396  
402  
408  
414  
420  
426  
432  
438  
444  
450  
456  
462  
468  
474  
480  
486  
492  
498  
504  
510  
516  
522  
528  
534  
540  
546  
552  
558  
564  
570  
576  
582  
588  
594  
600  
606  
612  
618  
624  
630  
636  
642  
648  
654  
660  
666  
672  
678  
684  
690  
696  
702  
708  
714  
720  
726  
732  
738  
744  
750  
756  
762  
768  
774  
780  
786  
792  
798  
804  
810  
816  
822  
828  
834  
840  
846  
852  
858  
864  
870  
876  
882  
888  
894  
900  
906  
912  
918  
924  
930  
936  
942  
948  
954  
960  
966  
972  
978  
984  
990  
996  
1000



② FOURTH FLOOR KEYPLAN  
1" = 20'-0"



① ELECTRICAL DEMOLITION FLOOR PLAN - PENTHOUSE  
1/8" = 1'-0"



③ ELECTRICAL FLOOR PLAN - PENTHOUSE  
1/8" = 1'-0"

#### GENERAL NOTES:

- COORDINATE ALL WORK WITH EXISTING GENERAL CONDITIONS, ARCHITECTURAL, STRUCTURAL, PLUMBING, FIRE PROTECTION, AND MECHANICAL SYSTEMS.
- CONTRACTOR TO VERIFY LOCATIONS OF ALL EXISTING ELECTRICAL EQUIPMENT, DEVICES, ETC. DEVICES/EQUIPMENT SHOWN MAY NOT REPRESENT ALL DEVICES/EQUIPMENT AND THE CONTRACTOR SHALL BE RESPONSIBLE FOR REMOVING/RELOCATING DEVICES/EQUIPMENT NOT SHOWN AS REQUIRED FOR DEMOLITION.

#### DEMOLITION KEYED NOTES:

- EXISTING PANEL EEDPA TO REMAIN.
- EXISTING SERVICE DISCONNECT SWITCH FOR ELEVATOR S1 TO REMAIN. EXISTING WIRING FROM SERVICE DISCONNECT SWITCH BACK TO C/B IN EXISTING PANEL EEDPA TO BE REMOVED. EXISTING CONDUIT TO REMAIN.
- EXISTING SERVICE DISCONNECT SWITCH FOR ELEVATOR P1 TO REMAIN. EXISTING WIRING FROM SERVICE DISCONNECT SWITCH BACK TO C/B IN EXISTING PANEL EEDPA TO BE REMOVED. EXISTING CONDUIT TO REMAIN.
- EXISTING SERVICE DISCONNECT SWITCH FOR ELEVATOR P2 TO REMAIN. EXISTING WIRING FROM SERVICE DISCONNECT SWITCH BACK TO C/B IN EXISTING PANEL EEDPA TO BE REMOVED. EXISTING CONDUIT TO REMAIN.
- EXISTING FIRE ALARM SYSTEM ELEVATOR SHUNT TRIP RELAY TO REMAIN.
- EXISTING FIRE ALARM SYSTEM ELEVATOR CABINET TO REMAIN.
- EXISTING ISOLATION TRANSFORMER FOR ELEVATOR S1 TO REMAIN.
- EXISTING ISOLATION TRANSFORMER FOR ELEVATOR P1 TO REMAIN.
- EXISTING ISOLATION TRANSFORMER FOR ELEVATOR P2 TO REMAIN.
- EXISTING FIRE ALARM SYSTEM SMOKE DETECTOR TO REMAIN.
- REMOVE AND DISCARD EXISTING POWER CONNECTION TO UNIT HEATER AND ALL ASSOCIATED WIRING AND CONDUIT.
- REMOVE AND DISCARD EXISTING POWER CONNECTION TO MOTORIZED DAMPER AND ALL ASSOCIATED WIRING AND CONDUIT.
- REMOVE EXISTING POWER CONNECTION TO ELEVATOR S1 CONTROLLER. REMOVE AND DISCARD EXISTING WIRING AND CONDUIT FROM EXISTING CONTROLLER BACK TO ISOLATION TRANSFORMER. REFER TO ELECTRICAL FLOOR PLAN FOR DETAILS.
- REMOVE EXISTING POWER CONNECTION TO ELEVATOR P1 CONTROLLER. REMOVE AND DISCARD EXISTING WIRING AND CONDUIT FROM EXISTING CONTROLLER BACK TO ISOLATION TRANSFORMER. REFER TO ELECTRICAL FLOOR PLAN FOR DETAILS.
- REMOVE EXISTING POWER CONNECTION TO ELEVATOR P2 CONTROLLER. REMOVE AND DISCARD EXISTING WIRING AND CONDUIT FROM EXISTING CONTROLLER BACK TO ISOLATION TRANSFORMER. REFER TO ELECTRICAL FLOOR PLAN FOR DETAILS.
- REMOVE AND DISCARD EXISTING RECEPTACLE. ALL ASSOCIATED WIRING AND CONDUIT TO BE RE-USED. REFER TO ELECTRICAL FLOOR PLAN FOR DETAILS.

#### GENERAL NOTES:

- COORDINATE ALL WORK WITH EXISTING GENERAL CONDITIONS, ARCHITECTURAL, STRUCTURAL, PLUMBING, FIRE PROTECTION, AND MECHANICAL SYSTEMS.

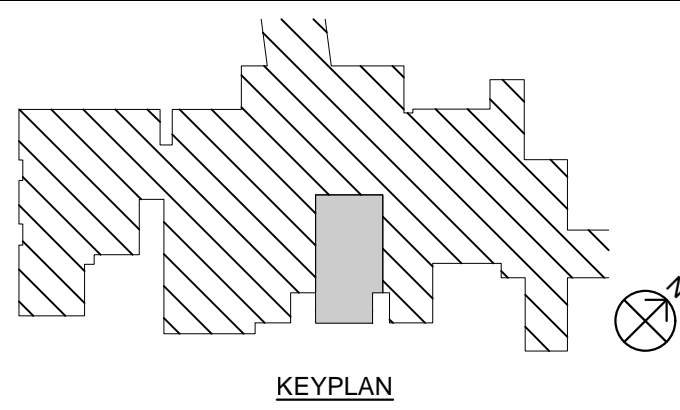
#### KEYED NOTES:

- EXISTING PANEL EEDPA.
- EXISTING SERVICE DISCONNECT SWITCH FOR ELEVATOR S1. INSTALL NEW 3-4, 1-8 GND BETWEEN EXISTING C/B IN EXISTING PANEL EEDPA AND EXISTING SERVICE DISCONNECT SWITCH. UTILIZE EXISTING CONDUIT.
- EXISTING SERVICE DISCONNECT SWITCH FOR ELEVATOR P1. INSTALL NEW 3-4, 1-8 GND BETWEEN EXISTING C/B IN EXISTING PANEL EEDPA AND EXISTING SERVICE DISCONNECT SWITCH. UTILIZE EXISTING CONDUIT.
- EXISTING SERVICE DISCONNECT SWITCH FOR ELEVATOR P2. INSTALL NEW 3-4, 1-8 GND BETWEEN EXISTING C/B IN EXISTING PANEL EEDPA AND EXISTING SERVICE DISCONNECT SWITCH. UTILIZE EXISTING CONDUIT.
- EXISTING FIRE ALARM SYSTEM ELEVATOR SHUNT TRIP RELAY.
- EXISTING FIRE ALARM SYSTEM ELEVATOR CABINET.
- EXISTING ISOLATION TRANSFORMER FOR ELEVATOR S1.
- EXISTING ISOLATION TRANSFORMER FOR ELEVATOR P1.
- EXISTING ISOLATION TRANSFORMER FOR ELEVATOR P2.
- EXISTING FIRE ALARM SYSTEM SMOKE DETECTOR.
- CONNECT TO NEW ELEVATOR S1 CONTROLLER AND INSTALL NEW 3-4, 1-8 GND, 1-1/2". TO EXISTING ISOLATION TRANSFORMER. FINAL CONNECTION WITH FLEXIBLE METAL CONDUIT.
- CONNECT TO NEW ELEVATOR P1 CONTROLLER AND INSTALL NEW 3-4, 1-8 GND, 1-1/2". TO EXISTING ISOLATION TRANSFORMER. FINAL CONNECTION WITH FLEXIBLE METAL CONDUIT.
- CONNECT TO NEW ELEVATOR P2 CONTROLLER AND INSTALL NEW 3-4, 1-8 GND, 1-1/2". TO EXISTING ISOLATION TRANSFORMER. FINAL CONNECTION WITH FLEXIBLE METAL CONDUIT.
- CONNECT TO ELEVATOR HOSTWAY PRESSURIZATION FAN. REFER TO MECHANICAL EQUIPMENT CONNECTION CHART FOR DETAILS. INSTALL 3-12, 1-1/2", 3/4" FROM VFD TO SF-1.
- PROVIDE NEW FIRE ALARM SYSTEM ELEVATOR RECALL RELAYS (PRIMARY LANDING, SECONDARY LANDING AND FIRE RAMP) FOR REPLACING ELEVATORS AND MOUNT ON WALL NEXT TO EXISTING RELAY. CONNECT TO NEW ELEVATOR CONTROLLERS AS REQUIRED.
- CONNECT TO EXISTING 480V 3Ø LIFE SAFETY PANEL AS INDICATED. INSTALL A NEW 200 C/B IN EXISTING SPACE AS INDICATED. EXISTING PANEL EL3BH IS SQUARE D NF480277V 3Ø 4W 125A PANELBOARD. CONTRACTOR TO VERIFY. REUSE PANEL DIRECTORY LABEL AS NECESSARY.
- INSTALL A NEW GFI RECEPTACLE IN EXISTING LOCATION AND CONNECT TO EXISTING CIRCUIT.

#### MECHANICAL EQUIPMENT CONNECTION CHART

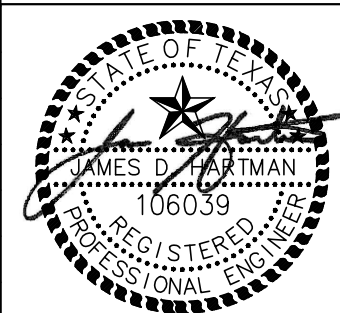
FAN SCHEDULE									
DESIG.	HP<WATTS>	VOLT	PH	FLA	MCA	UNIT DISCONNECT	UNIT C/B	UNIT BRANCH CKT.	NOTES
SF-1	5	480	3	7.6	9.5	VFD	20/3	3-12, 1-1/2", 3/4"	1

NOTES:  
1) FINAL CONNECTION AT UNIT WITH LIQUID-TIGHT FLEXIBLE METAL CONDUIT.



100% CONSTRUCTION DOCUMENTS

#### CONSULTANTS



M.E.P. / T. ENGINEER  
BROWN CONSULTING  
3505 OLSEN BLVD, SUITE 110  
AMARILLO, TX 79109  
WWW.BROWNCONSULTINGENGINEERS.COM

December 19, 2018

#### ARCHITECT



333 NW 12th St, SUITE A  
OKLAHOMA CITY, OK 73103  
spur-design.com

APPROVED: DIRECTOR

APPROVED: ASSOCIATE DIRECTOR

APPROVED: ASSISTANT DIRECTOR

APPROVED: CHIEF ENGINEER

Drawing Title

ELECTRICAL FLOOR PLANS

APPROVED: CHIEF ENGINEER

Project Title

REPLACE ELEVATOR  
CONTROLS BLDG 28

Location

AMARILLO VA HEALTH CARE SYSTEM  
6010 W. AMARILLO BLVD, AMARILLO, TX 79106

Date

12/19/2018

Checked

JDH

Drawn

JCF

Project Number

504-18-107

Building Number

28

Drawing Number

ES - 101

Dwg 8 OF 8

Office of  
Construction  
and Facilities  
Management

